**DESCRIPTION****PLAN**

Motors, on/off switches, wires and PCBs

A - 5.6.3 - 2

Cable sets

A - 5.6.3 - 4

Body and body parts

A - 5.6.3 - 6

Dust bags and filters

A - 5.6.3 - 8

Hoses, connections and tubes

A - 5.6.3 - 10

Nozzles

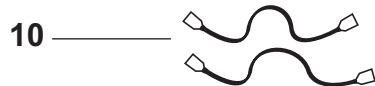
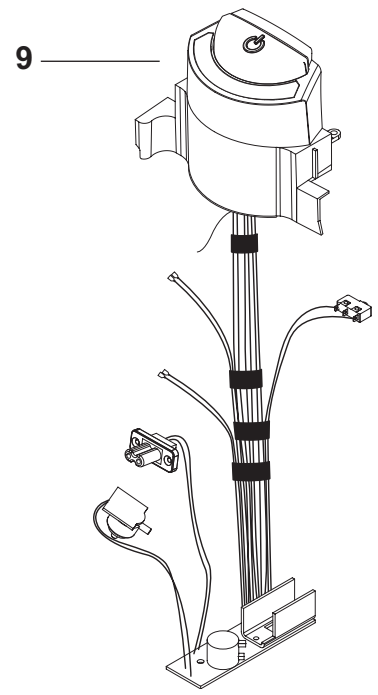
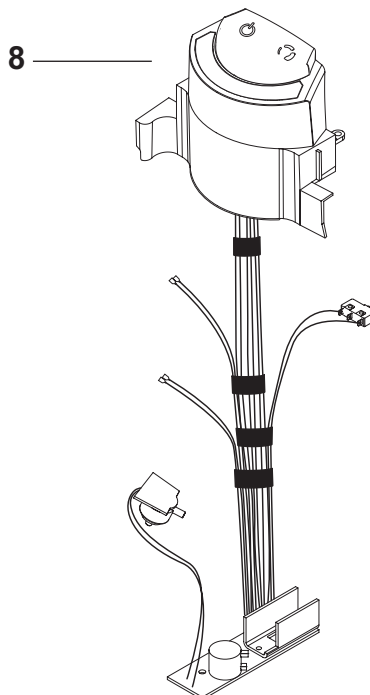
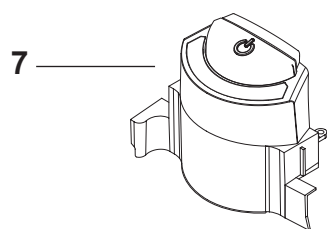
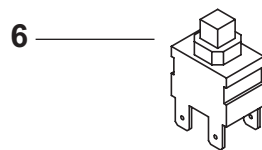
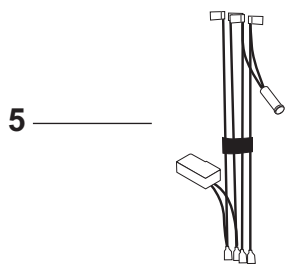
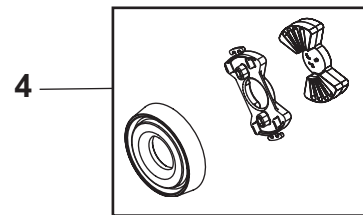
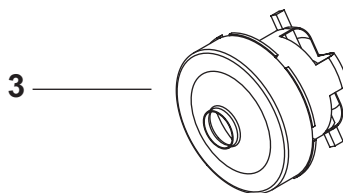
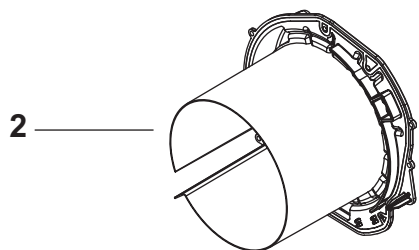
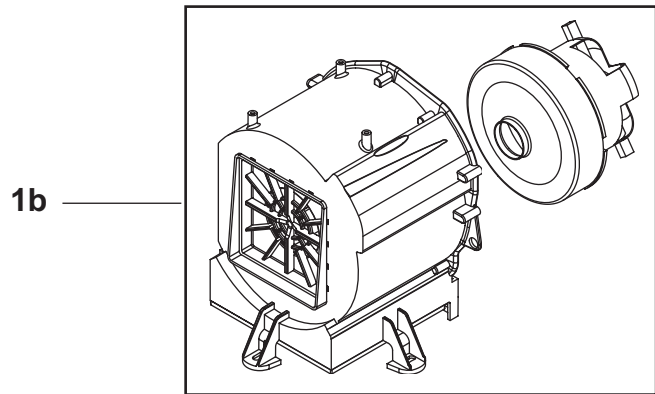
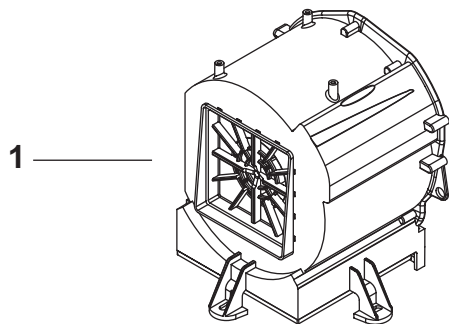
A - 5.6.3 - 12

BASIC - X100, X110

MEDIUM - X150, X200, X210

PREMIUM - X300

Specifications are subject to change without further notice.

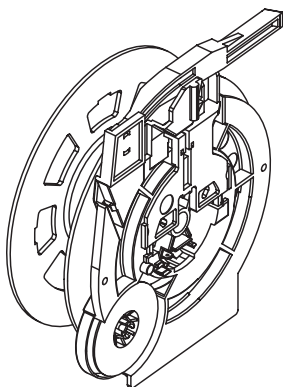


<b>05-12</b>	<b>NILFISK EXTREME - SPARE PARTS AND SERVICE KITS</b>	<b>BOOK A</b>		
<b>05-02</b>	<b>MOTORS, ON/OFF SWITCHES, WIRES AND PCBs</b>	<b>A</b>	<b>5.6.3</b>	<b>3</b>

<b>Item</b>	<b>Part No.</b>	<b>Qty.</b>	<b>Description</b>	<b>Note</b>	<b>EAN code</b>
1	147 0250 500	1	Motor module	Seal included	7319519647600
1b>>	147 0252 500	1	Motor module cpl. for Bacis model.	Motor 1200W 220-240V included	7319519656800
1b>>	147 0252 510	1	Motor module cpl. for Medium and Premium models.	Motor 1600W 220-240V included	7319519656817
1b>>	147 0252 520	1	Motor module cpl.	Motor 1300W 100-120V included	7319519656824
2	147 0251 500	1	Motor module lid	Seal included	7319519647617
3	147 0568 500	1	Motor	For Basic model, 220-240 V, 1200 W	7319519647624
3	147 0567 500	1	Motor	For Medium and Premium model, 220-240 V, 1600 W	7319519647631
3	147 0569 500	1	Motor	110-120 V, 1300 W	7319519647648
4	147 0560 500	1	Motor suspension kit		7319519647846
5	147 0554 500	1	Wire kit ON/OFF	For Basic model	7319519647839
6	140 8096 500	1	Switch kit	For Basic model	7319519629194
7	147 0120 500	1	Display ON/OFF version	For Basic model	7319519647815
8	147 0280 500	1	Electronics cpl., X150-210	220-240 V	7319519647778
8	147 0280 510	1	Electronics cpl., X150-210	110-120 V	7319519647785
9	147 0281 500	1	Electronics cpl., X300	220-240 V	7319519647792
9	147 0281 510	1	Electronics cpl., X300	110-120 V	7319519647808
10	140 7040 500	1	Internal wire for motor housing	220-240 V	7319519647655
10	140 7042 510	1	Internal wire for motor housing	110-120 V	7319519647662

Note >> means: New or changed part number.

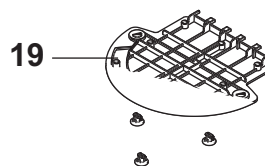
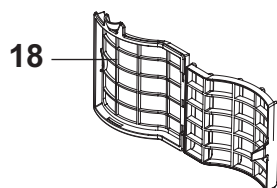
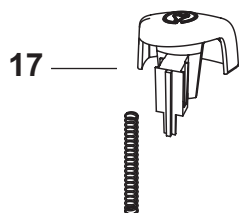
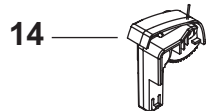
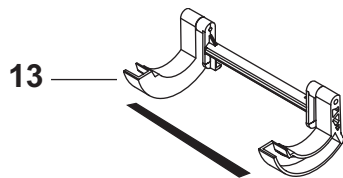
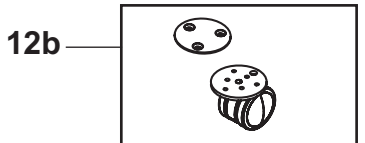
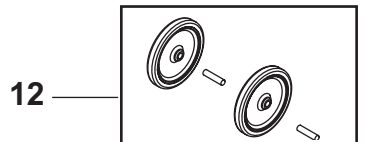
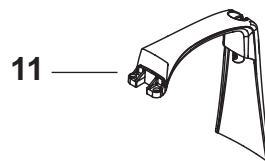
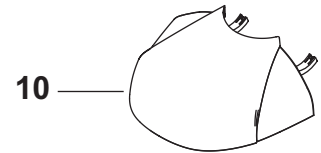
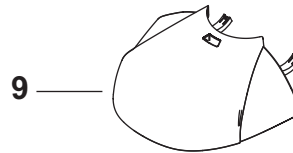
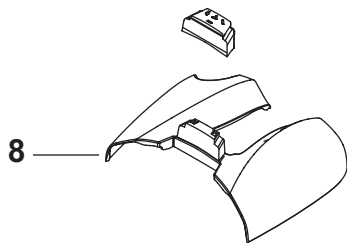
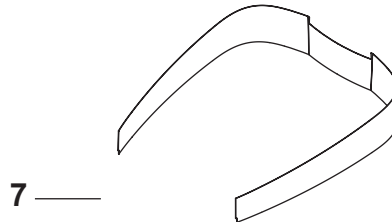
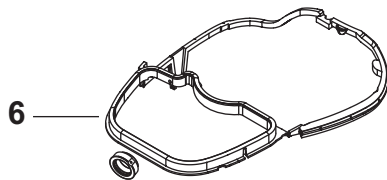
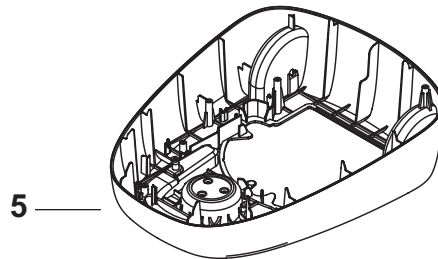
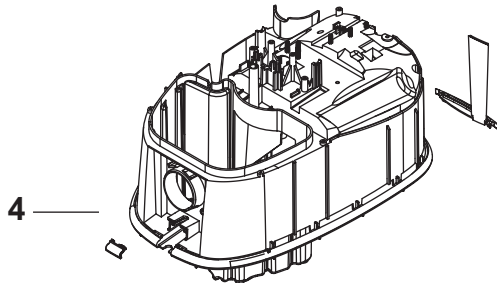
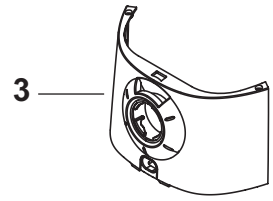
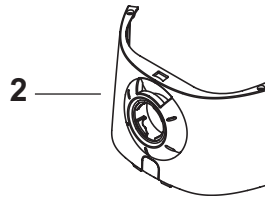
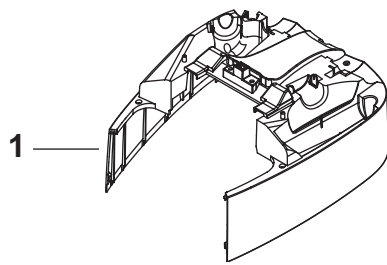
1 ———



Cable with plug/socket for bracket			
	Voltage	Plug type	
EU	220-240		
UK	220-240		
AUS/NZ	220-240		
CH	220-240		
USA/CAN	110-120		

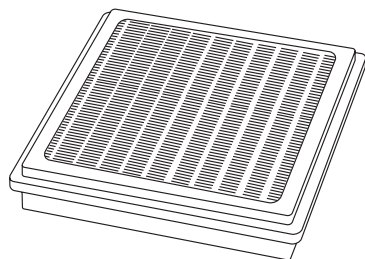
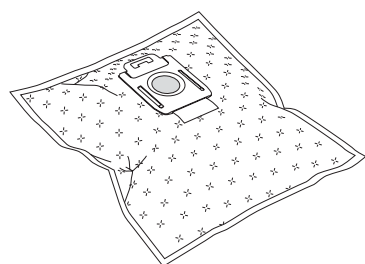
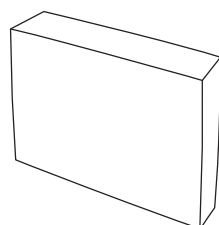
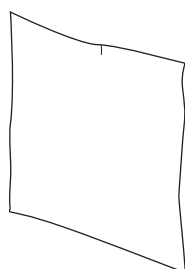
05-02	NILFISK EXTREME - SPARE PARTS AND SERVICE KITS	<b>BOOK A</b>		
	<b>CABLE SETS</b>	<b>A</b>	<b>5.6.3</b>	<b>5</b>

Item	Part No.	Qty.	Description	Note	EAN code
1	147 0182 500	1	Cable re-winder 9 m	EU	7319519647679
1	147 0182 510	1	Cable re-winder 9 m	UK	7319519647686
1	147 0182 520	1	Cable re-winder 9 m	AUS/NZ	7319519647709
1	147 0182 530	1	Cable re-winder 9 m	US/CAN	7319519647716
1	147 0182 540	1	Cable re-winder 9 m	CH	7319519647693
1	147 0171 500	1	Cable re-winder 7 m	EU	7319519647723
1	147 0171 510	1	Cable re-winder 7 m	UK	7319519647730
1	147 0171 520	1	Cable re-winder 7 m	AUS/NZ	7319519647754
1	147 0171 530	1	Cable re-winder 7 m	US/CAN	7319519647761
1	147 0171 540	1	Cable re-winder 7 m	CH	7319519647747



<b>05-12</b>	<b>NILFISK EXTREME - SPARE PARTS AND SERVICE KITS</b>	<b>BOOK A</b>		
<b>05-02</b>	<b>BODY AND BODY PARTS</b>	<b>A</b>	<b>5.6.3</b>	<b>7</b>

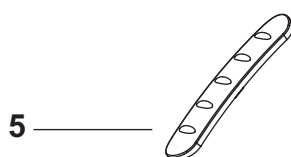
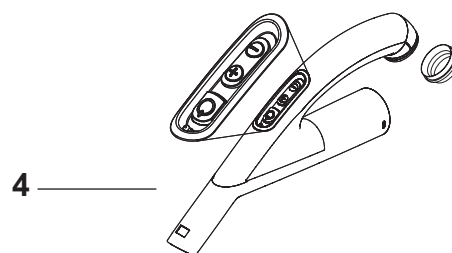
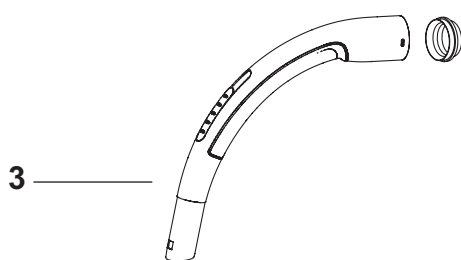
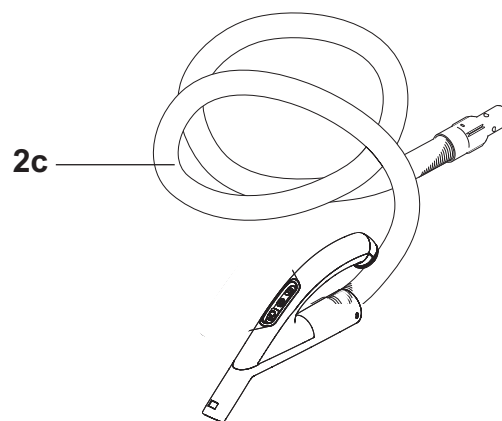
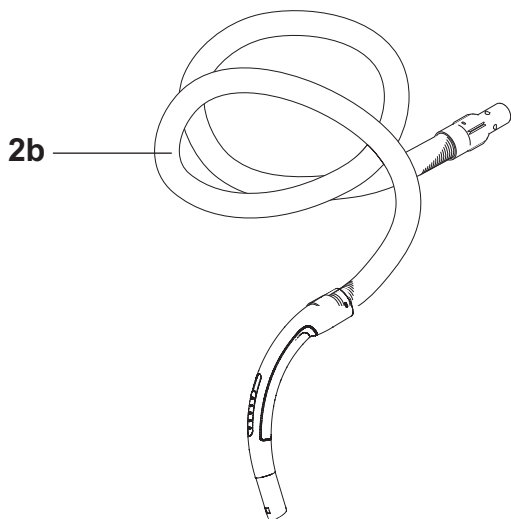
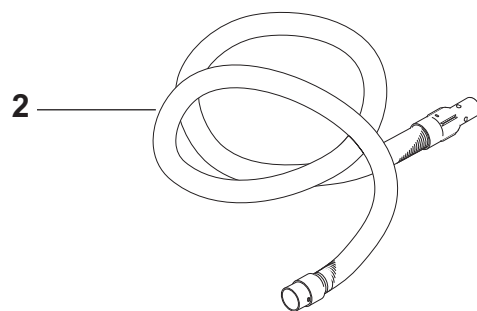
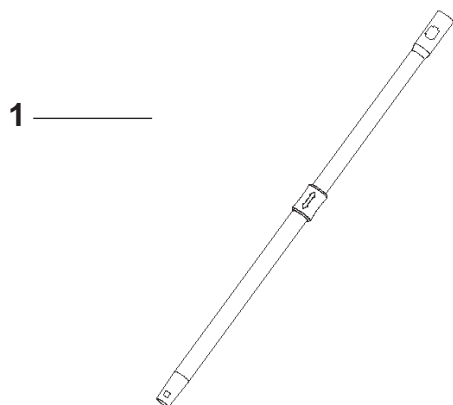
<b>Item</b>	<b>Part No.</b>	<b>Qty.</b>	<b>Description</b>	<b>Note</b>	<b>EAN code</b>
1	147 0113 500	1	Main body outer, X100	Coral Red	7319519647426
1	147 0113 510	1	Main body outer, X110	Sky Blue	7319519647433
1	147 0113 530	1	Main body outer, X150	Star Silver Metallic	7319519647440
1	147 0113 550	1	Main body outer, X200	Ice Blue Metallic	7319519647457
1	147 0113 570	1	Main body outer, X210	Purple Metallic	7319519647464
1	147 0113 580	1	Main body outer, X300	Champagne Metallic	7319519647471
2	147 0107 500	1	Cover front	For Basic and Medium model	7319519647495
3	147 0214 500	1	Cover front with power outlet	For Premium model	7319519647501
4	147 0215 500	1	Main body inner		7319519650303
5	147 0100 500	1	Body base	Black	7319519647587
6	147 0570 500	1	Sealing kit cpl.		7319519648027
7	147 0110 500	1	Personal cover	Silver Metallic	7319519647488
8	147 0116 510	1	Accessory lid, X100	Coral Red	7319519647525
8	147 0116 520	1	Accessory lid, X110	Sky Blue	7319519647532
8	147 0116 530	1	Accessory lid, X150	Star Silver Metallic	7319519647549
8	147 0116 540	1	Accessory lid, X200	Ice Blue Metallic	7319519647556
8	147 0116 550	1	Accessory lid, X210	Purple Metallic	7319519647563
8	147 0116 560	1	Accessory lid, X300	Champagne Metallic	7319519647570
9	147 0277 500	1	Dust lid cpl., X100	Coral Red	7319519647945
9	147 0277 510	1	Dust lid cpl., X110	Sky Blue	7319519647952
10	147 0298 500	1	Dust lid cpl., X150	Star Silver Metallic	7319519647969
10	147 0298 510	1	Dust lid cpl., X200	Ice Blue Metallic	7319519647976
10	147 0298 520	1	Dust lid cpl., X210	Purple Metallic	7319519647983
10	147 0298 530	1	Dust lid cpl., X300	Champagne Metallic	7319519647990
11	147 0212 500	1	Handle cpl.	Incl. print	7319519647938
12	147 0242 500	1	Wheel kit, incl. axels		7319519647594
12b>>	147 1040 500	1	Link wheel		7319519656329
13	147 0264 500	1	Hinge, dust lid		7319519647884
14	147 0274 500	1	Hinge kit, accessory lid		7319519647891
15	147 0184 500	1	Lock, accessory lid		7319519647907
16	147 0108 500	1	Button, dust lid		7319519647914
17	147 0117 500	1	Button, cable re-winder		7319519647921
18	147 0158 500	1	Pre-filter holder		7319519648003
19	147 0101 500	1	Hepa lid		7319519648010
20	147 0208 000	1	Parking plate		7319519647822

**1** —**2** —**3** —**4** —



05-02	NILFISK EXTREME - SPARE PARTS AND SERVICE KITS	<b>BOOK A</b>		
<b>DUST BAGS AND FILTERS</b>		<b>A</b>	<b>5.6.3</b>	<b>9</b>

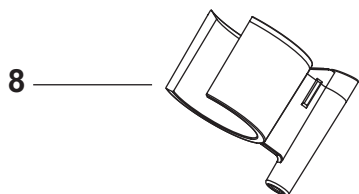
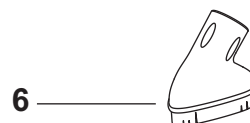
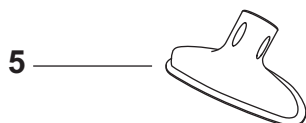
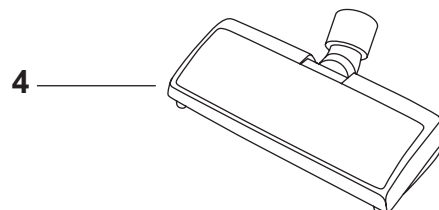
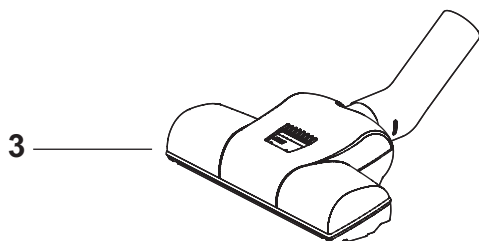
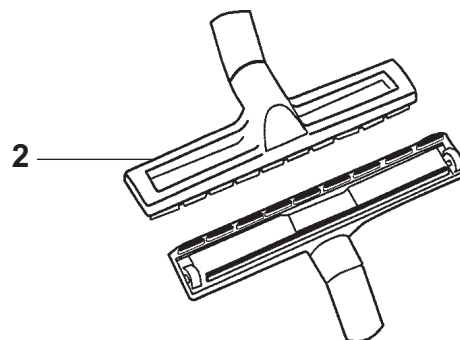
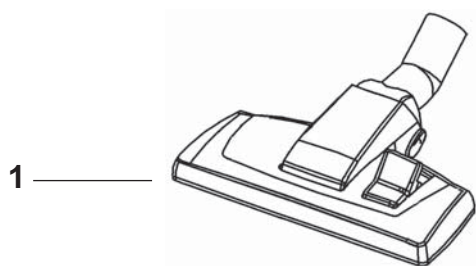
Item	Part No.	Qty.	Description	Note	EAN code
1	147 0180 500	1	Hepa filter H14	141x132 mm	7319519645194
2	147 0286 500	1	Dust bags and pre-filters	4 fabric plus bags, 1 pre-filter Extreme, 1 pre-filter King	7319519645644
3	147 0159 500	1	Active carbon filter	106x106 mm	7319519647389
4	147 0157 500	1	Pre-filter	3 pcs	7319519647396



<b>05-12</b>	<b>NILFISK EXTREME - SPARE PARTS AND SERVICE KITS</b>	<b>BOOK A</b>		
<b>05-02</b>	<b>HOSES, CONNECTIONS AND TUBES</b>	<b>A</b>	<b>5.6.3</b>	<b>11</b>

<b>Item</b>	<b>Part No.</b>	<b>Qty.</b>	<b>Description</b>	<b>Note</b>	<b>EAN code</b>
1	147 0284 500	1	Telescopic tube	32x1045 mm, Crome	7319519647327
1	147 0284 510	1	Telescopic tube	32x1045 mm, Aluminium	7319519647334
2	147 0285 500	1	Hose with coupling	D 32/38 mm, L 2000 mm	7319519647341
2b >>	147 0243 510	1	Hose cpl. with Bent End Basic.	For Basic and Medium model, D 32 mm	7319519655308
2c >>	147 0123 510	1	Hose cpl. with Bent End Premium.	For Premium model, D 32 mm,	7319519655315
3	147 0243 500	1	Bent end	For Basic and Medium model, D 32 mm	7319519647853
4	147 0123 500	1	Bent end incl. speed regulator	For Premium model, D 32 mm, Battery type CR2032	7319519647877
5	147 0152 500	1	Valve, bent end	For Basic and Medium model, 5 pcs	7319519647860

Note >> means: New or changed part number.



<b>05-02</b>	<b>NILFISK EXTREME - SPARE PARTS AND SERVICE KITS</b>	<b>BOOK A</b>		
<b>05-05</b>	<b>NOZZLES</b>	<b>A</b>	<b>5.6.3</b>	<b>13</b>

<b>Item</b>	<b>Part No.</b>	<b>Qty.</b>	<b>Description</b>	<b>Note</b>	<b>EAN code</b>
1	140 8492 520	1	Combi nozzle	D 32 mm, Black	7319519636673
2	140 6700 540	1	Hard floor nozzle	D 32 mm, Black	7319519636680
3	22360000	1	Turbo nozzle	D 32 mm, W 300 mm, Black	5715492010882
4	12010100	1	Electro nozzle	220-240 V	7319519600643
5	147 0299 500	1	Upholstery nozzle	D 32 mm, W 142 mm, Black	7319519647365
6	147 0300 500	1	Triangular nozzle	D 32 mm, Black	7319519647372
7	147 0146 500	1	Crevice nozzle	D 32 mm, L 153 mm, Black	7319519647358
8	>>147 0208 500	1	Parking clip	Black	7319519647822

Note >> means: New or changed part number.