

# SQ 850-11, SQ 23 GALLON

---



**Part List**

**US-English**

01-11-2007

# **Nilfisk ALTO**

*Why Compromise*

# Table of Contents

SQ 850-11, SQ 23 GALLON

<b>Clamping plate, filter cassette</b>	<b>3</b>
<b>Base, motor</b>	<b>5</b>
<b>Cover, switch box</b>	<b>7</b>
<b>Cleaning set, filter</b>	<b>9</b>
<b>Chassis</b>	<b>11</b>
<b>Container, filter bag, accessories</b>	<b>13</b>

# Clamping plate, filter cassette

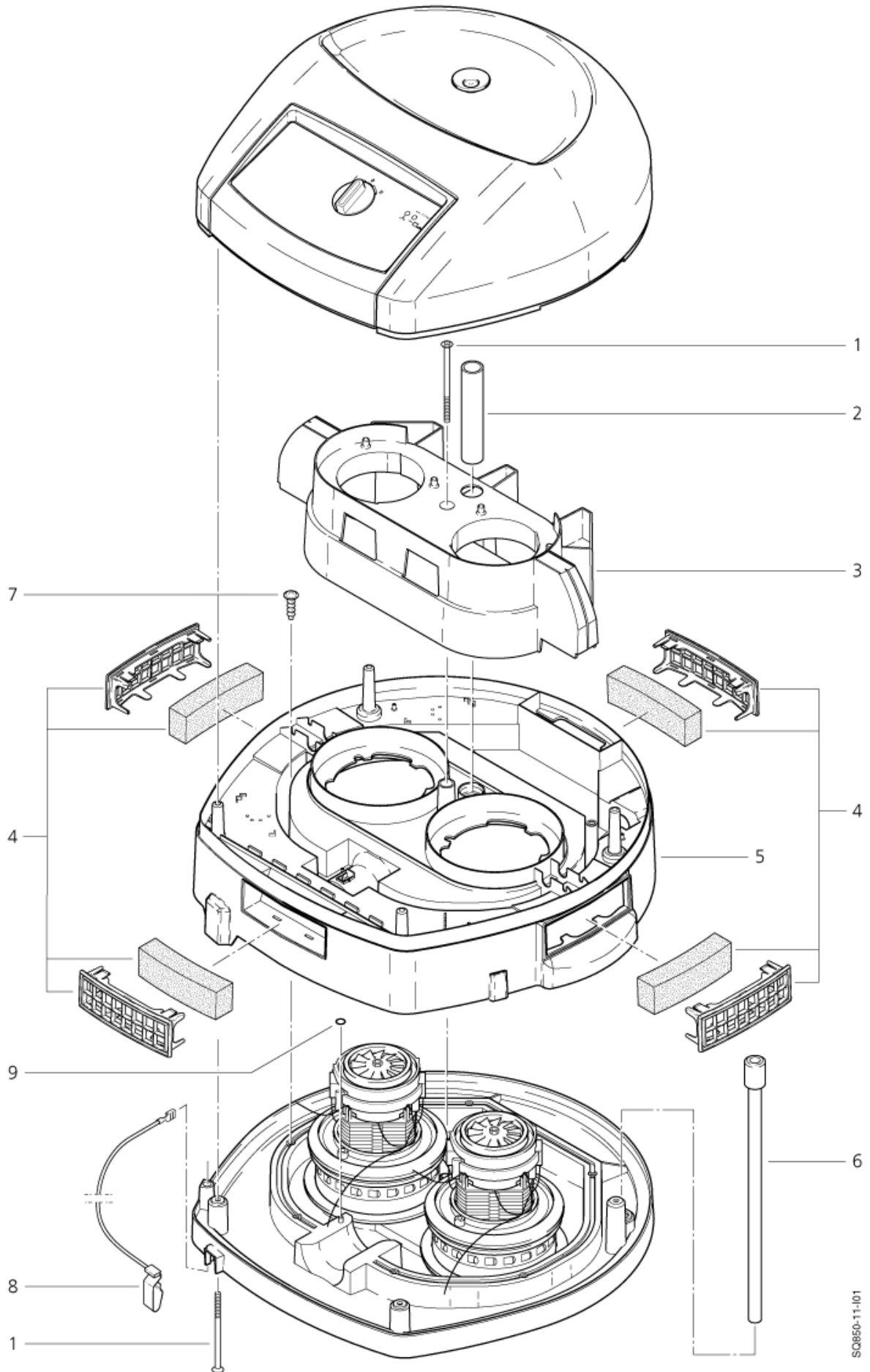
SQ 850-11, SQ 23 GALLON

01-11-2007

Part List ID

SQ85001

3



SQ850-11-101

# Clamping plate, filter cassette

SQ 850-11, SQ 23 GALLON

01-11-2007

Part List ID  
SQ85001

4

Pos	Part no.	Qty	Description	EAN
1	11257	1	LENFOR FLUSH SCREW 6 X 90	4005337112
2	61213	1	DISTANCE PIPE 25X133	4005337612
3	60629	1	COOLING-AIR-CONDUIT	4005337606
4	62007	1	FILTER CASSETTE	4005337620
5	62199	1	CLAMPING PLATE	4005337621
6	60634	1	RUBBER TUBE	4005337606
7	11565	1	SCREW 5X18	4005337115
8	61174	1	CONTACT SPRING	4005337611
9	62359	1	GASKET 9X4X1	4005337623



# Base, motor

SQ 850-11, SQ 23 GALLON

01-11-2007

Part List ID  
SQ85002

6

Pos	Part no.	Qty	Description		EAN
1	11256	1	SCREW 3.5X18		4005337112
2	48421	1	DISTRIBUTION STRIP 4-POL. 2,5 MM 20A		4005337484
3	14503	1	POWER CORD H07RN-F 3G1,5X7,5 SABS	*ZA*	4005337145
3	14885	1	POWER CORD H07RN-F 3G1,5X7,5 CEE7	*EU*	4005337148
3	15274	1	POWER CORD H07RN-F 3G1,5X7,5 BS	*GB,230V*	4005337152
3	28501	1	POWER CORD SJOW-AWG12/3X	SQ 23 GALLON *US*	4005337285
3	60442	1	POWER CORD H07RN-F 3G1,0X7,5 SEV	*CH*	4005337604
3	62016	1	POWER CORD H07BQ-F 3G2,5X7,5	*GB,110V*	4005337620
3	62327	1	POWER CORD H07RN-F 3G1,0X7,5 SRAF	*DK*	4005337623
4	1762	1	NUT 6KT PG 16 46320 MS		4005337017
5	11567	1	CABLE SCREW JOINT PG16		4005337115
6	26785	1	MOTOR 120V 1000W	1000 W / 120 V *GB,110V* - SQ 23 GALLON *US*	4005337267
6	49594	1	MOTOR 230V 1200W	1200 W / 230 V *GB,230V* ZA*	4005337495
6	49598	1	MOTOR 230V 1000W	1000 W / 230 V *CH*	4005337495
6	62012	1	ELECTRIC MOTOR TURBO 230V	1400 W / 230 V *EU*DK*	4005337620
7	47035	1	COLLAR	for identif. letter "L" + "M"	4005337470
7	47036	1	COLLAR	for identif. letter "C"	4005337470
8	26774	1	CARBON BRUSH SET M	for identif. letter "M"	4005337267
8	26775	1	CARBON BRUSH SET L	for identif. letter "L"	4005337267
8	49625	1	CARBON BRUSH SET C	for identif. letter "C"	4005337496
9	29205	1	MOTOR BEARING RING SET OIL-RESISTANT	for identif. letter "L" + "M"	4005337292
9	61167	1	MOTOR BEARING RING SET EC OIL-RESISTANT	for identif. letter "C"	4005337611
10	62200	1	PLATE		4005337622
11	60636	1	CONTAINER SEAL		4005337606
12	5697	1	STRAP 3X8X33		4005337056

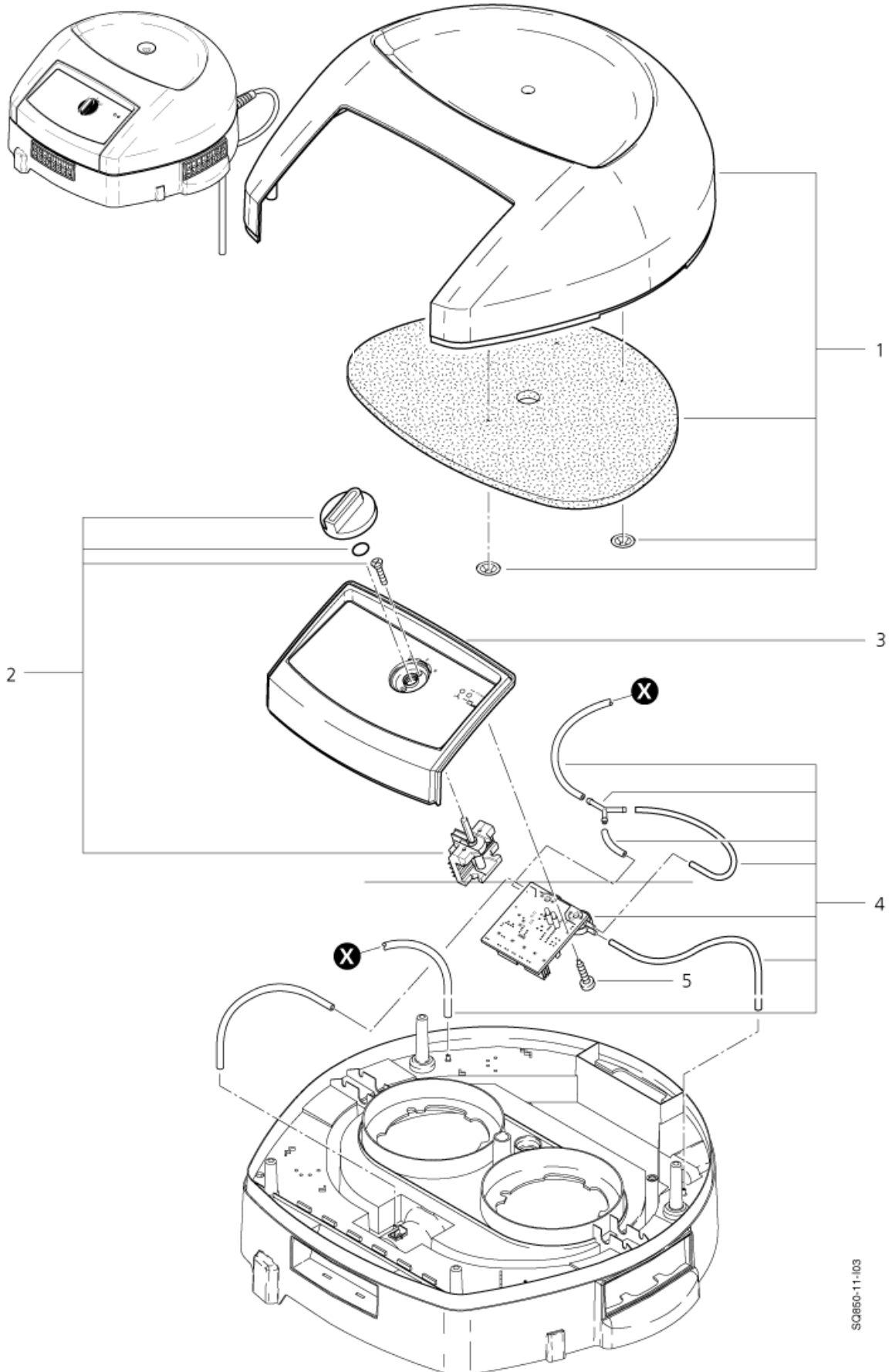
# Cover, switch box

SQ 850-11, SQ 23 GALLON

01-11-2007

Part List ID  
SQ85003

7



# Cover, switch box

SQ 850-11, SQ 23 GALLON

01-11-2007

Part List ID  
SQ85003

8

Pos	Part no.	Qty	Description	EAN
1	62008	1	COVER	4005337620
2	62009	1	SWITCH	4005337620
3	65215	1	SWITCH BOX	4005337652
4	62006	1	ELECTRONICS 230V	230V 4005337620
4	62146	1	MOTION MOTOR 110V SQ8	110V 4005337621
5	4036	1	SHEET METAL SCREW 2,9X9,	4005337040



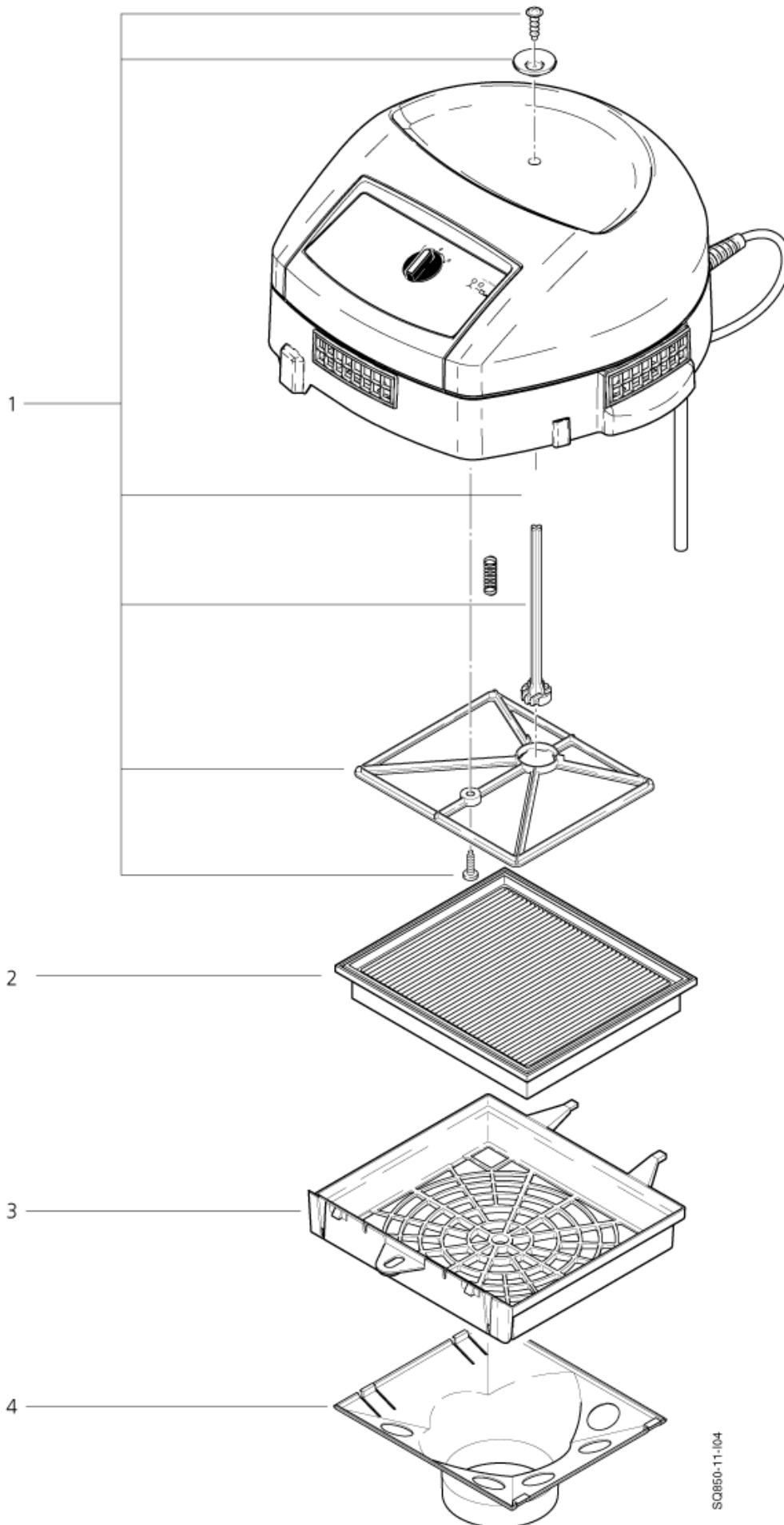
# Cleaning set, filter

SQ 850-11, SQ 23 GALLON

01-11-2007

Part List ID  
SQ85004

9



SQ850-11-104

# Cleaning set, filter

SQ 850-11, SQ 23 GALLON

01-11-2007

Part List ID  
SQ85004

10

Pos	Part no.	Qty	Description	EAN
1	62004	1	CLEANING SET	4005337620
2	61605	1	FILTER ELEMENT PET FLEECE	4005337616
3	60631	1	FILTER SUPPORTING BASKET	4005337606
4	60632	1	FUNNEL-SUCTION	4005337606

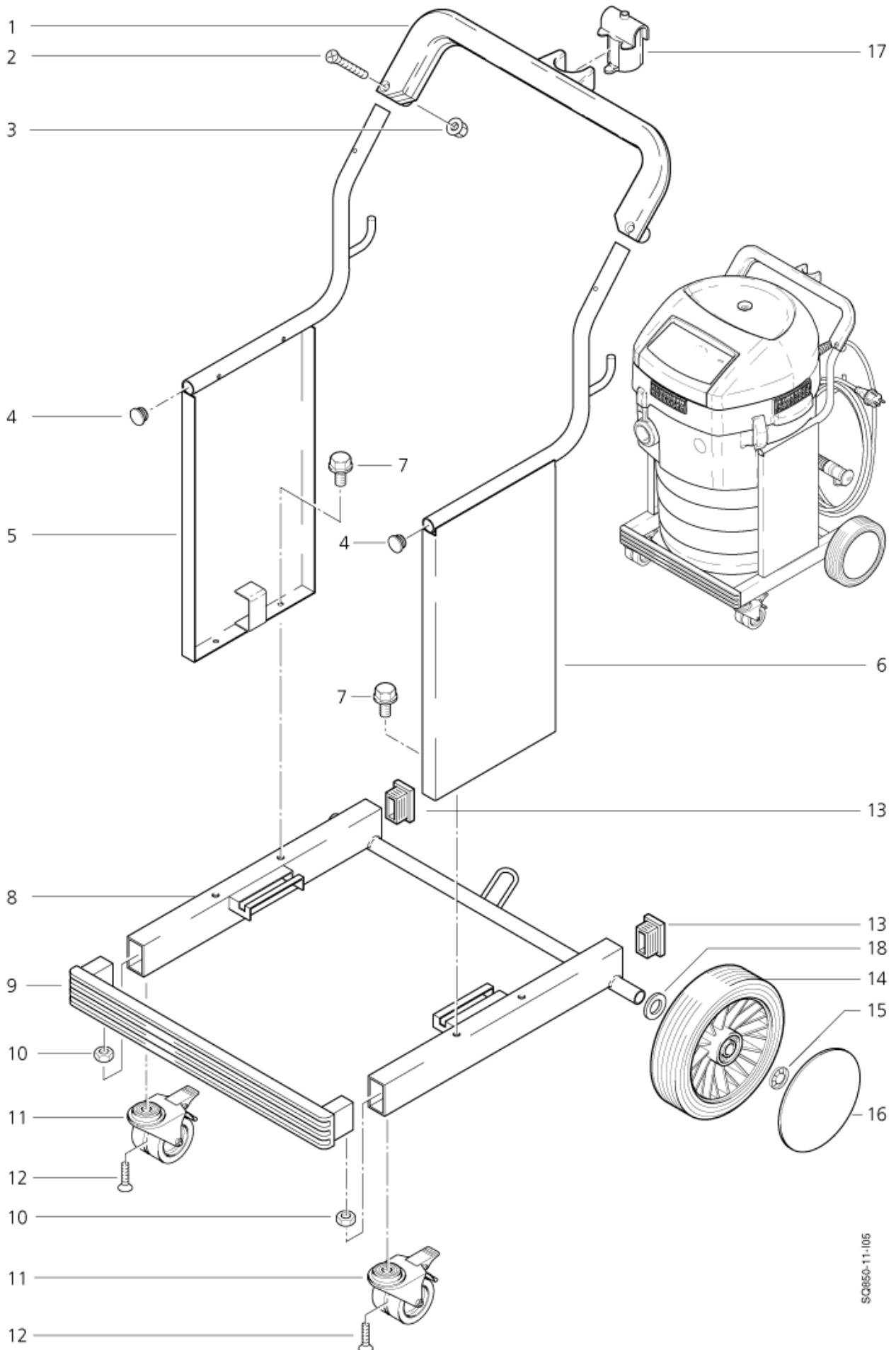
# Chassis

SQ 850-11, SQ 23 GALLON

01-11-2007

Part List ID  
SQ85005

11



SQ850-11-105

# Chassis

SQ 850-11, SQ 23 GALLON

01-11-2007

Part List ID  
SQ85005

12

Pos	Part no.	Qty	Description	EAN
1	46134	1	HANDLEBAR	4005337461
2	17737	1	SCREW M6X40	4005337177
3	12496	1	HEXAGON NUT M6	4005337124
4	60767	1	PLUG	4005337607
5	65219	1	SCREEN RIGHT	4005337652
6	65221	1	SCREEN LEFT	4005337652
7		1	HEXAGON HEAD CAP SCREW	SCREWM 6X 12 4005337607
8	302000172	1	FRAME	4005337686
9	46301	1	SCREEN	4005337463
10		1	HEXAGON NUT M8	NUT 6KT- M8 934 ZN 4005337027
11	302000126	1	STEERABLE WHEEL 75X2X25	4005337006
12	30738	1	SCREW M8X30 ISO 10642	4005337307
13	7895	1	CAP 50X30	4005337078
14	302000173	1	WHEEL Ø200X54X33	4005337016
15	47302	1	CLAMPING RING 28,6/20X	4005337473
16	65213	1	HUB CAP (BLUE)	4005337652
17	60879	1	ADAPTOR	4005337608
18		1	PAD 21X3	SCREW 21 X3,0 B 125 ZN 4005337513

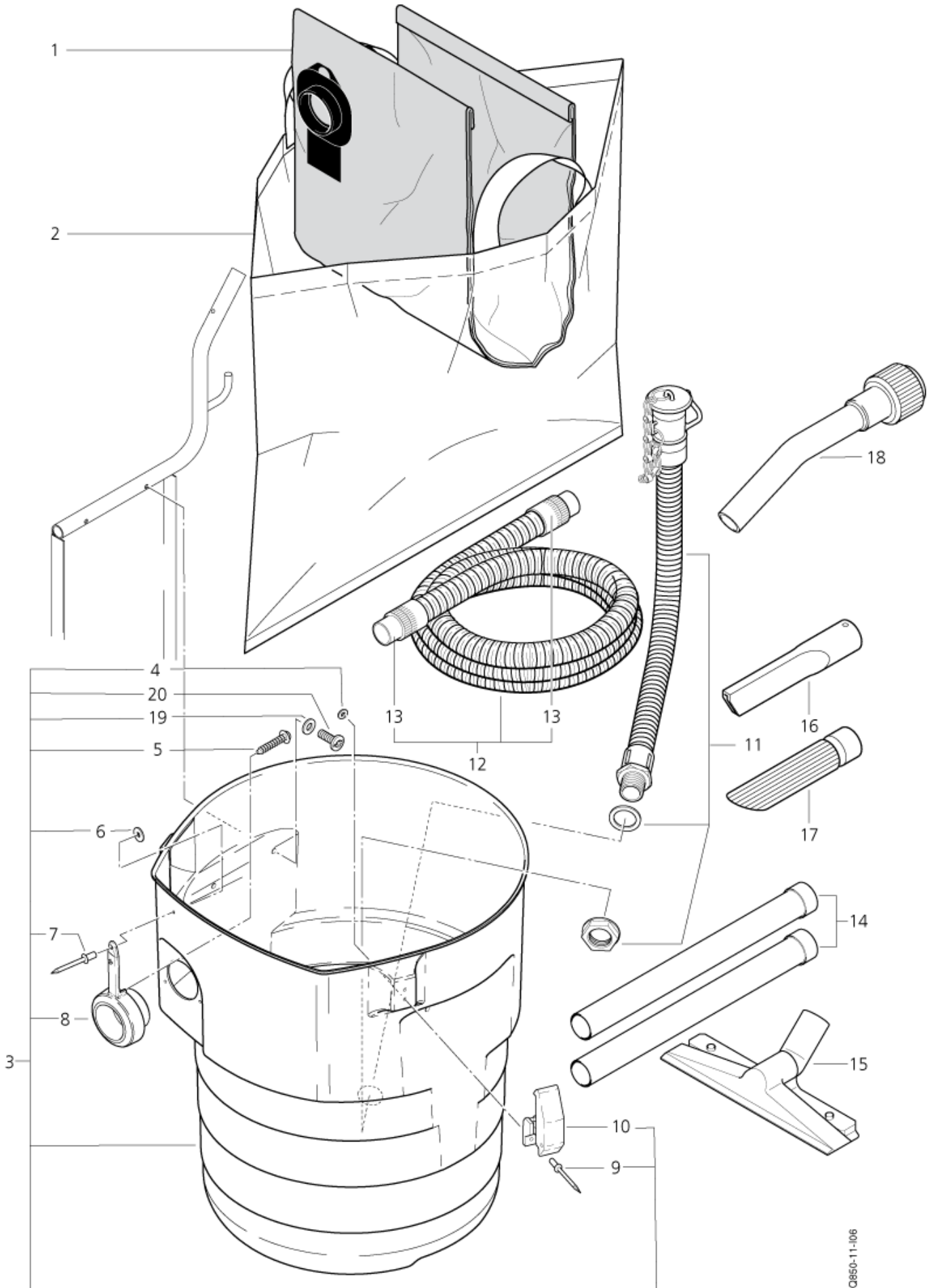
# Container, filter bag, accessories

SQ 850-11, SQ 23 GALLON

01-11-2007

Part List ID  
SQ85006

13



# Container, filter bag, accessories

SQ 850-11, SQ 23 GALLON

01-11-2007

Part List ID  
SQ85006

14

Pos	Part no.	Qty	Description	EAN
1	61603	1	FILTER BAG SET5 SQ 8	4005337616
2	60676	1	DISPOSAL BAG FOR FILTER ELEMENT	4005337606
3	62005	1	CONTAINER	4005337620
4	3092	1	WASHER 4,3X0,8	SCREW 4,3X0,8 A 125 ZN 4005337030
5	46248	1	SCREW EJOT- KA35X18 WN	4005337462
6	2763	1	WASHER 5,3X1	WASHER 5,3X1,0 A 125 ZN 4005337027
7	7069	1	BLIND RIVET	4005337070
8	60878	1	INLET FITTING	4005337608
9	15889	1	BLIND RIVET	4005337158
10	19880	1	FIXING CLAMP WAS 11370/19	4005337198
11	61210	1	DRAIN HOSE	4005337612
12	15358	1	UNIVERSAL HOSED50X4000MM	SQ 23 GALLON 4005337153
13	15101	1	HOSE SLEEVE 50/50	SQ 23 GALLON 4005337151
14	15546	1	EXTEN TUBE 36 2X500MM SS	SQ 23 GALLON 4005337155
15	5147	1	NOZZLE 330X36MM	SQ 23 GALLON 4005337051
16	7102	1	CREVICE NOZZLE H.D. 50M	SQ 23 GALLON 4005337071
17	7868	1	DIAGONAL TUBE NOZZLE 50M	SQ 23 GALLON 4005337078
18	15341	1	CURVED HAND TUBE 50-36MM	SQ 23 GALLON 4005337153
19	14665	1	WASHER M6	4005337146
20	6878	1	LENS HEAD COUNTERS. SCREW	4005337068