

SPECIFICATIONS

- Dimension: 115 x 19 x 11 mm
- Pod Capacity: ≤ 1.5ml
- Battery: 320 mAh

GETTING STARTED

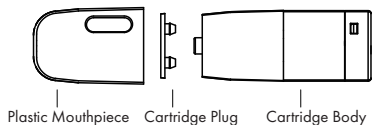
1. Make sure V-Pod is fully charged.
2. Insert a **filled** cartridge into the device.
Refer to filling instructions on the next page if using an empty refillable cartridge. Otherwise use a pre-filled single use cartridge.
3. The device is built to function whenever you inhale.
No buttons are required to turn it on.
4. At first, take small puffs, then inhale more deeply as desired

Note: The indicator light will glow white when inhaling and will glow red when inhaling while the battery is low.

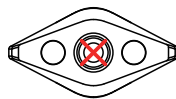
CHARGING

1. When power is connected to the USB port, the indicator light flashes red 5 times and stays a solid red when charging.
2. When charging has finished, the light will be a solid white.

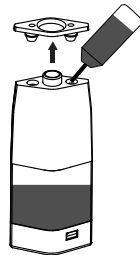
RE-FILLABLE CARTRIDGE



CAUTION:
Don't install the plastic mouthpiece before filling.



CAUTION:
Do not fill via center hole.



1. Remove the cartridge plug from the cartridge body.
2. Fill the cartridge with liquid through the left or right hole. **Do not fill the centre hole.**
3. Replace the cartridge plug then click the plastic mouthpiece into place.
4. **Wait 5 minutes** before inserting cartridge into the device. Not allowing sufficient time for the liquid to soak will cause the cotton to burn, which will result in requiring a new cartridge.

Note: The indicator light will glow white when inhaling and will glow red when inhaling while the battery is low.

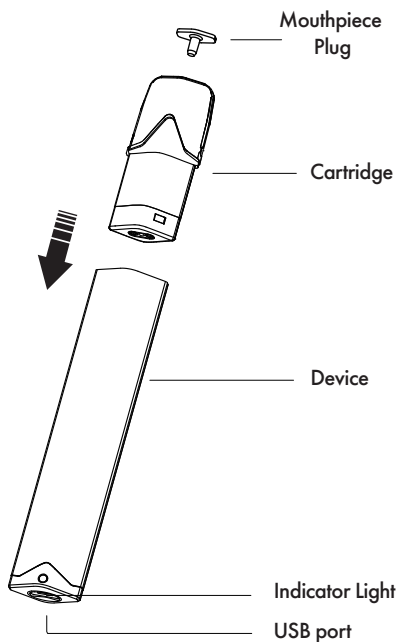
INDICATOR LIGHT

- Loading/unloading pod: The light will flash white 3 times when inserting a cartridge. Removing the cartridge will cause the light to flash white once.
- Battery Status: Normally, the light is white when inhaling, however the light will be red when the battery is low.
- Auto Cut Off: Vaping for more than 8 seconds in one inhale will trigger the auto cut off and the light will flash white rapidly 8 times.
- Battery too low: If the battery is too low to vape, the light will flash red 3 times when attempting to inhale.
- Short Circuit: The red light flashes 10 times to indicate a short circuit. You will need to replace the cartridge or check if there is liquid where the cartridge is inserted.

WARNING

1. Replace the cartridge before it becomes completely empty to avoid dry hits or damage to the device.
2. Keep this unit out of reach of children or pets.
3. Do not try to disassemble the battery.
4. This device does not mean to be used for nicotine replacement therapy or smoking cessation.
5. Keep away from extreme temperatures and water. If damaged, discard the device. Any mishandling may cause the battery in the device to catch fire or explode.
6. Not to be used by minors, non-smokers, children, pregnant or breastfeeding women and those with an illness or chronic health condition.

V-POD DIAGRAM



Insert the **filled** cartridge into the device.

KEEP IT CLEAN

For the best V-Pod performance, prevent residue build up by keeping these areas clean and dry

- Mouthpiece
- Where the cartridge is inserted
- Charging port

Use a cotton swab to clean.
Dampen with isopropyl alcohol and dry thoroughly.

For more tips, please visit

VAPETIX™
vapestix.com.au



VAPETIX™

V-POD™

Designed in Australia

USER MANUAL