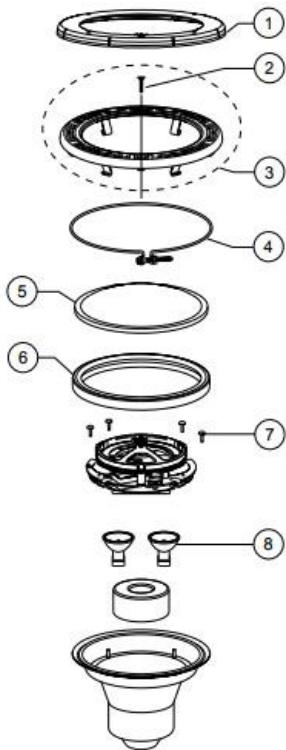


Pentair SAM Light Installation Instructions

Pentair SAM lights come in both 12 and 120 volt versions. For the 120V version of the SAM light, there is a transformer inside the light that switches the voltage from 120V to 12V inside the light. In both version of the light, the actual bulbs you are removing are 12VAC. The replacement LED board also runs at 12VAC. There are two bulbs inside and also a small motor that is used to turn the color wheel. So three items inside the fixture are running at 12VAC. The color LED board you are about to install is going to use the two power wires that were originally used for the color wheel motor. It is a black and white wire with plastic coating. The two other white wires with a cloth type outer coating are not used and can be capped off or covered with black tape.

1. Remove the color wheel assembly
2. Remove the color wheel motor
3. Remove the two light bulbs
4. Remove the 4 copper lugs which allows the entire assembly to be removed.
5. Cut the wires as you only need the black and white wire for power.
6. Reinstall one of the copper lugs you removed. That will be used to mount the LED board to the inside of the fixture to keep it from moving around.

Section VII. *SAm**Spectrum Amerlite*Replacement Parts



Item No.	Part No.	Description
1	79212100	Face ring, large plastic, white
1	79212165	Face ring, large plastic, gray
1	79212111	Face ring, large plastic, black
2	79104800	Pilot Screw, with captive gum washer, brass
2	619355	Pilot Screw, with captive gum washer, S/S
3	79110600	Face ring assembly, S/S
4	79111000	Uni-tension wire clamp assembly
5	619385	Lens, SAm , standard
6	79101600	Gasket, 8-3/8 in. lens
7	619487	Nut, retaining
8	79112400	Bulb, 71 watt, EYC, MR-16, 2 req.
NOT SHOWN		
	619489	Colorwheel assembly
	619495	Colorwheel motor w/gear

SAVE THESE INSTRUCTIONS.

7. All of the parts above are no longer needed and can be thrown away

WWW.FLALED.COM

754-444-6008

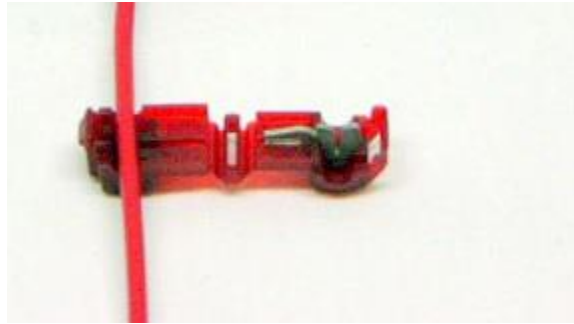
INSTRUCTIONS V3.0

FLORIDA-SUNSEEKER.COM PENTAIR SAM LIGHT COLOR LED UPGRADE KIT INSTRUCTIONS

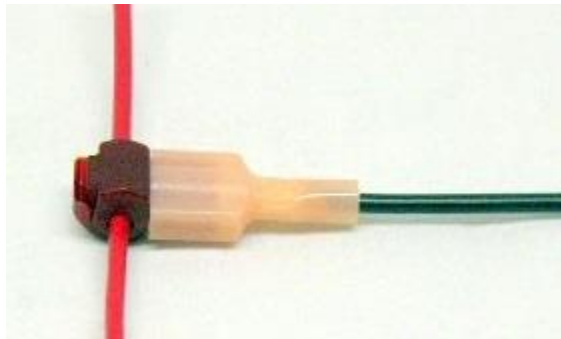
- Pick one of the two sides of wires to use, these wires are the ones that connect to the light bulb socket. You are going to get your power from one side or the other. Doesn't matter which side and it doesn't matter which wire you connect to which wire, either side can be used and you can hook either side of the LED module to either wire.
- Take the 2 clips that are provided and snap them onto each of the two wires. This will give you mounting terminals

Two wire clips are provided, below is the before and after images of what the wire clips should look like. After you clip to the wire, you use it as the terminal to connect the led wires to for power.

Before Image:



After Image:



- Connect the two wires from the LED board to the two terminals that you just created.
- Mount board to the copper lug installed in step 6 and use the small SS screw included to screw in the black circle mounted on the board to the copper lug.
- Install the light back into your pool

These boards generate very little heat and can be run outside the water for testing prior to installation. You want the board to be as close as possible to the glass lens on the light. Since there is little to no heat, they can touch, the closer the board to the glass, the brighter the light will be.

Call us at 754-444-6008 if you have any questions about installation.

WWW.FLALED.COM

754-444-6008

INSTRUCTIONS V3.0