

GEN III/IV CHEVROLET SMALL BLOCK TO NISSAN 300ZX & 240SX OIL FILTER RELOCATION KIT INSTALLATION INSTRUCTIONS



INSTALLATION INSTRUCTIONS

Rev A October 2015

!!NOTICE!!

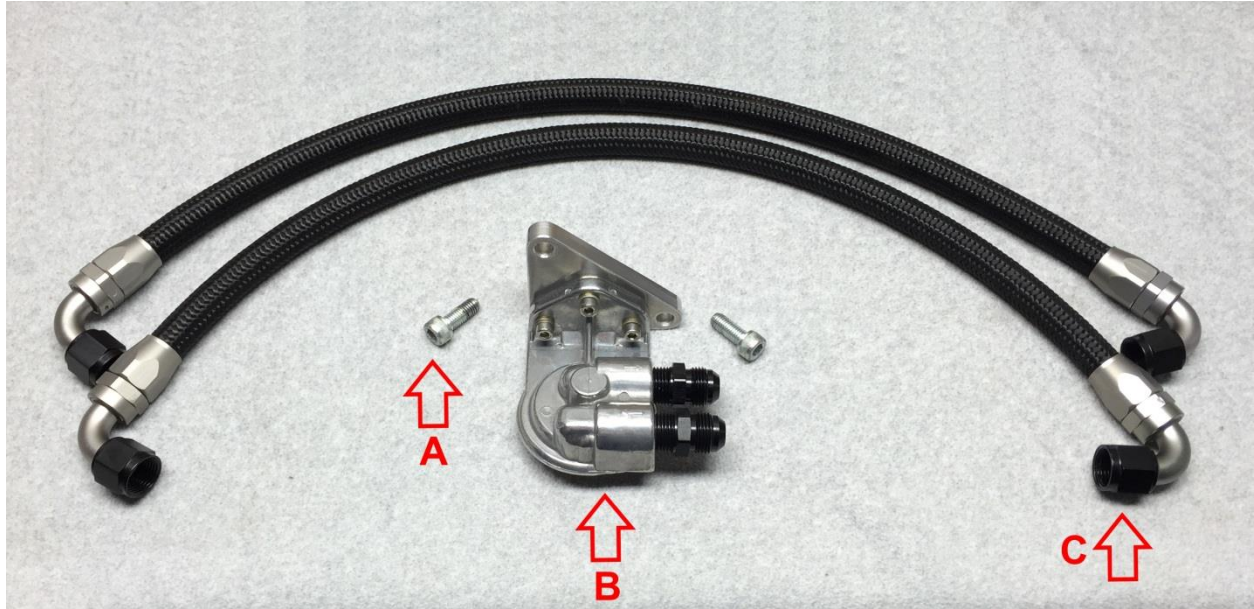
LOJ INNOVATIONS, LLC HAS PREPARED THESE INSTRUCTIONS TO MAKE YOUR PRODUCT INSTALLATION AS SIMPLE AND HASSLE-FREE AS POSSIBLE. INSTALLATION ISSUES EXPERIENCED AS A RESULT OF NOT FOLLOWING THESE INSTRUCTIONS ARE THE SOLE RESPONSIBILITY OF THE USER.

!!WARNING!!

THE USER OF THIS PRODUCT ASSUMES ALL LIABILITY FOR ANY DAMAGES TO PERSONAL OR PUBLIC PROPERTY RESULTING FROM THE USE OR MISUSE OF THIS PRODUCT. ANY INJURIES SUSTAINED BY THE USER AND/OR ANY OTHER INDIVIDUALS ARE ALSO THE SOLE RESPONSIBILITY OF THE USER. MOTORSPORTS ACTIVITIES ARE INHERINTLY DANGEROUS AND LOJ INNOVATIONS, LLC CAN NOT BE HELD RESPONSIBLE FOR ANY INCIDENTS RESULTING FROM THE USE OR MISUSE OF THIS PRODUCT.

BEFORE YOU BEGIN:

Please ensure that all of the components required for your installation have been included in your package. The Fuel Filter/Regulator Kit should include the following parts.



A - (Qty 2) – Oil Filter Bracket Mounting Bolts	C - (Qty 2) – Oil Lines
B - (Qty 1) – Oil Filter Stand/Bracket Assembly	

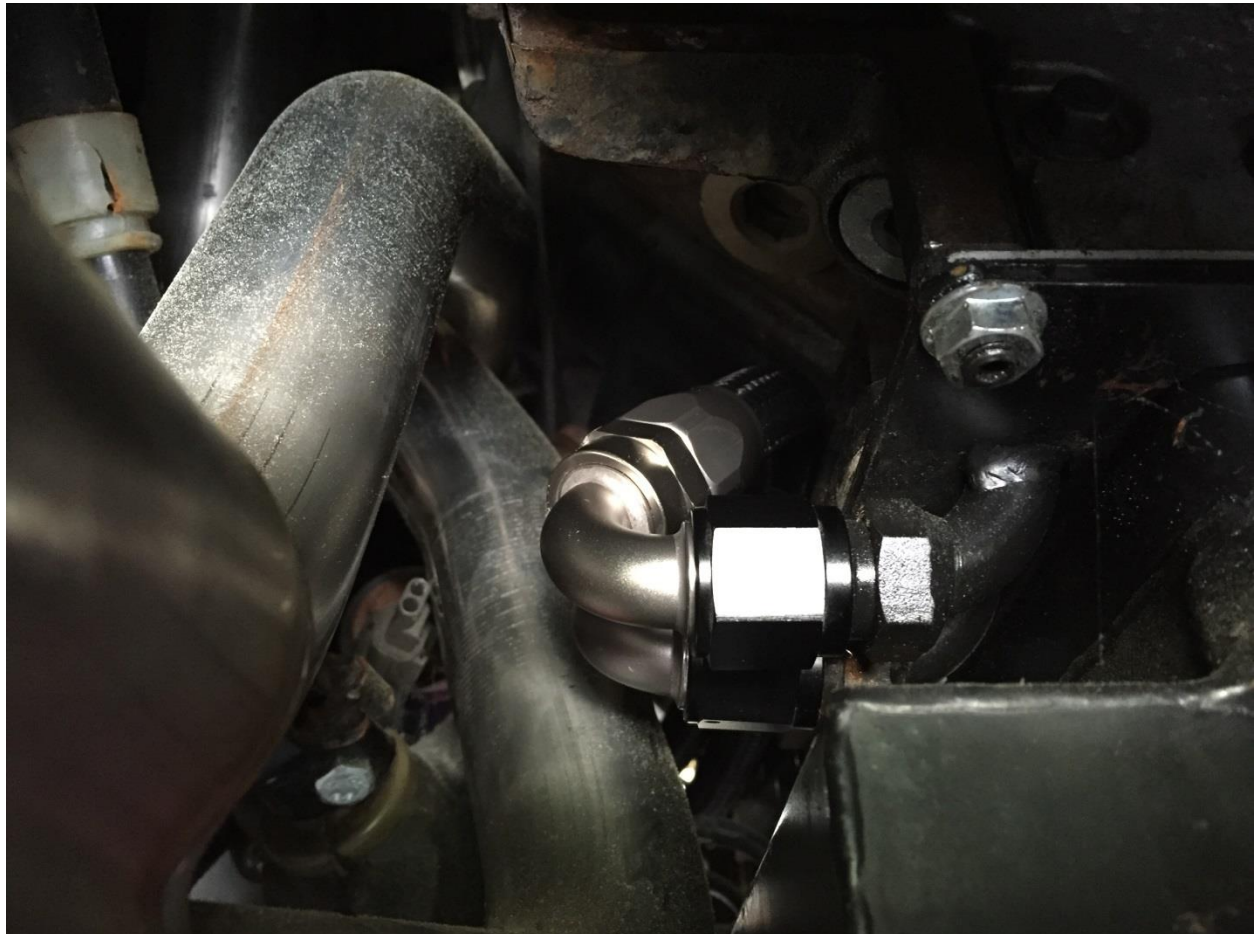
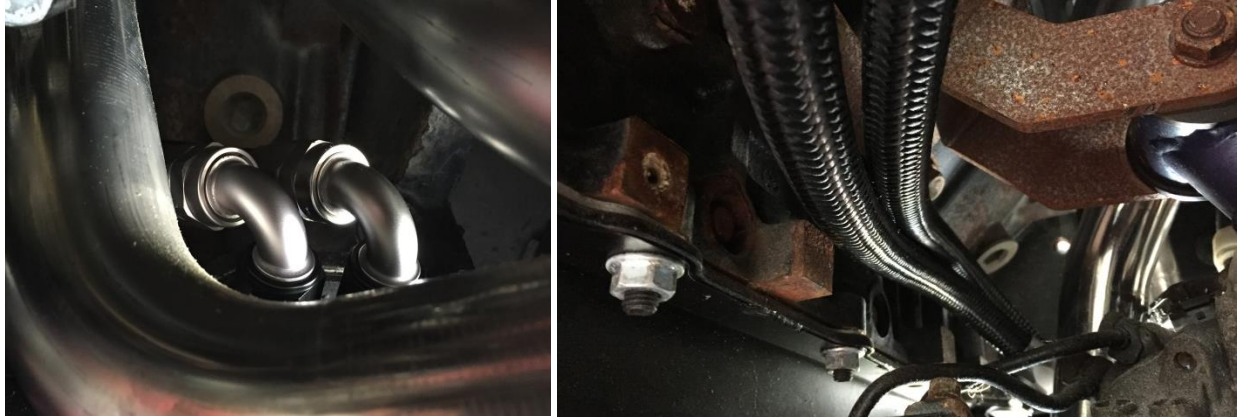
NOTICE– This Oil Filter Stand is threaded 13/16” to accept most GM LS application oil filters. LOJ Innovations recommends using the filter meant to work with the application your engine came from.

WARNING – This Oil Filter Stand has both NPT fittings and the Oil Filter Nipple pre-installed with factory installed thread sealant. The two NPT fittings MAY NOT be threaded in the same amount! This is NORMAL! NPT Threads are a taper fit, and no two fittings fit the same. Rest assured, these fittings are torqued to spec. Any tampering with these fittings which results in a leak will not be covered by LOJ.

INSTALLATION PROCEDURE:

- 1) Attach the Oil Filter Stand/Bracket assembly to the front of the driver's side cylinder head.
- 2) As seen in the images below, attach the 120 degree angle ends of the oil hoses to the oil pan fittings. The hoses should point up and forward and the hoses should be routed underneath the drivers side motor mount. Images for Z32 and S-Chassis Shown.

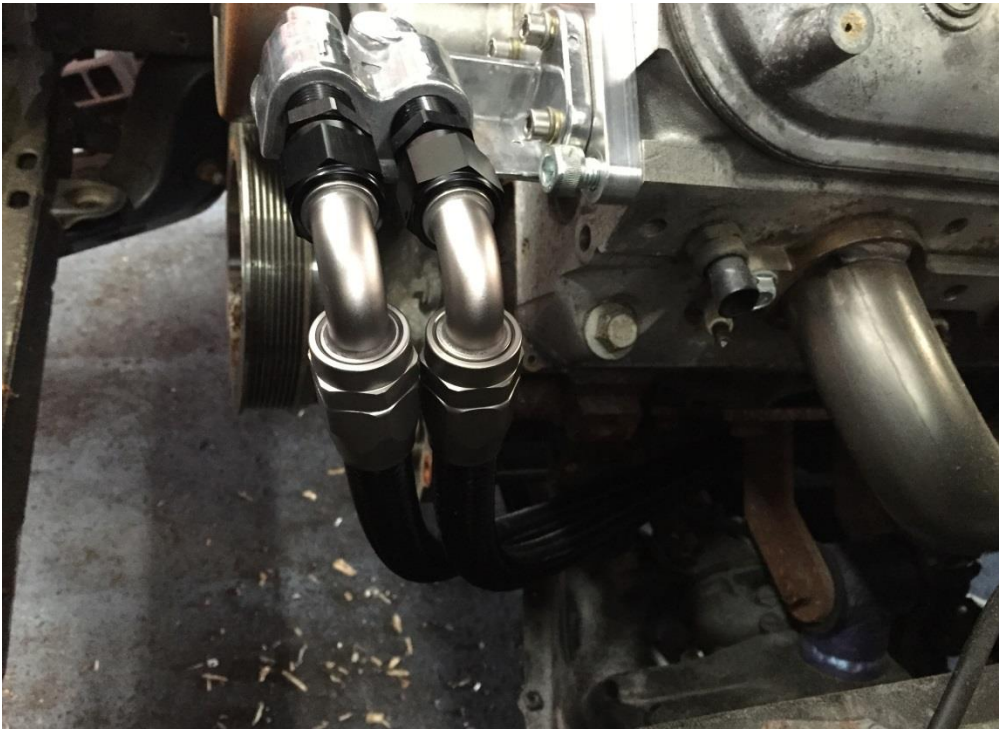
Z32 300ZX



S13 & S14 240SX



- 3) Then connect the 90 degree angle hose ends to the filter stand. The front port on the oil pan should be connected to the front port on the filter stand, the rear should be connected to the rear. Remember "Front-Feed Rear-Return" (300ZX Shown, 240SX is the same)



- 4) Your installation is complete. Start your engine and check for leaks. Tighten any connections if necessary.