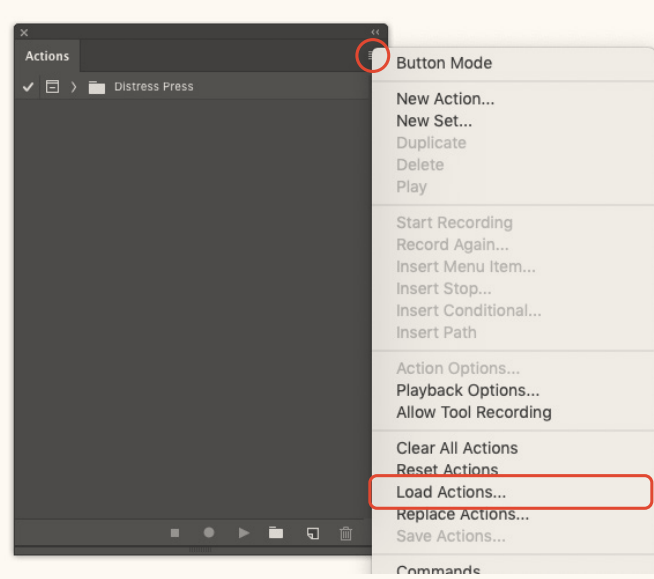




INSTALLING YOUR HELPER ACTIONS

HALFTONE ZINE MACHINE INCLUDES A SET OF HELPER ACTIONS FOR FAST COMPOSITING AND EXPORTING TO MULTIPLE FORMATS. TO INSTALL TAKE THE FOLLOWING STEPS:

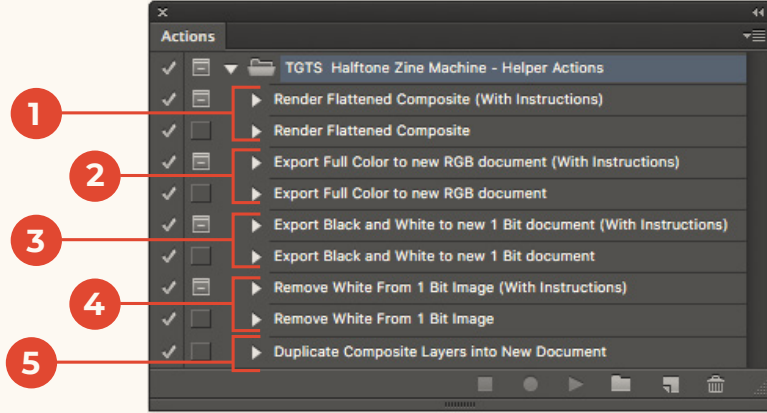
- 1 In Photoshop open the Actions Panel (Window > Actions).
- 2 Click the fly-out menu in the top right corner of the Actions Panel.
- 3 Choose 'Load Actions' from the list.
- 4 Locate and select the .atn file in the 'Install These Files' folder of your download package. Click Open to complete the installation.



USING THE HELPER ACTIONS

WE'VE INCLUDED FIVE HANDY ACTIONS TO HELP YOU PREVIEW, PROCESS AND EXPORT YOUR HALFTONE IMAGES FOR USE IN OTHER APPLICATIONS.

We highly recommend using the action versions which include interactive instructions the first few times you use them.



WHICH ACTION TO USE?

1 RENDER FLATTENED COMPOSITE

Due to the distressed texture contained in many of the halftone patterns included in your PSD, some images may not render in full detail on screen at certain zoom levels until flattened. (See Fig. B).

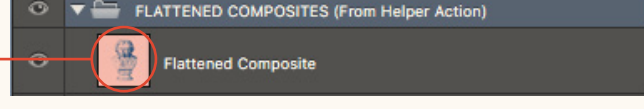
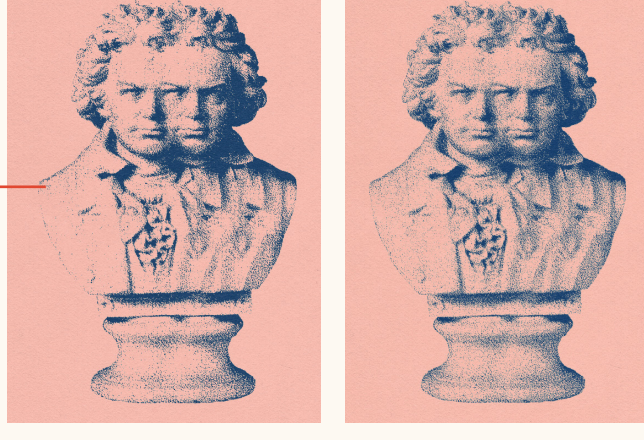
The Render Flattened Composite action allows you to quickly view the full detail of your processed image by instantly rendering a flattened composite of your processed art into a new layer, leaving your working layers in tact.

The resulting composite layer will appear in the 'FLATTENED COMPOSITES' layer group as shown.

Fig. B

Live View / Unflattened

Flattened Composite

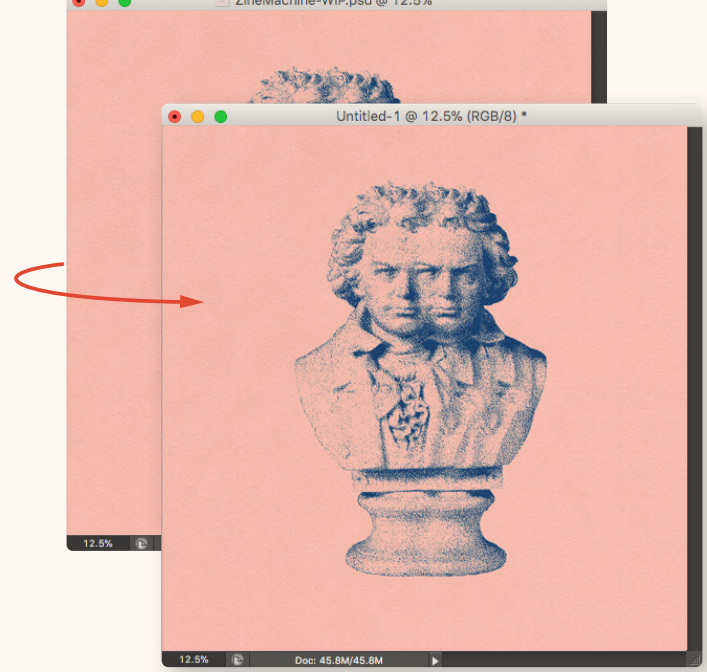


2 EXPORT FULL COLOR TO NEW RGB DOCUMENT

This action renders and exports a full color, flattened composite of your processed art and places it into a new RGB document.

The new image dimensions will match your original canvas size.

Once complete you can then crop and save it as a separate file. Close the new file to go back to your Halftone Zine Machine PSD.



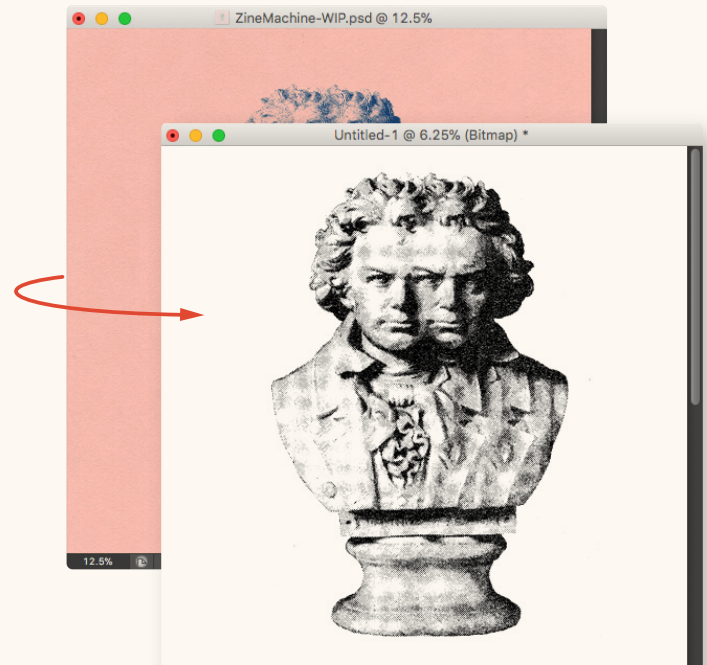
3 EXPORT BLACK AND WHITE TO NEW 1 BIT DOCUMENT

This action renders and exports an ultra high resolution (yet low file size) 1 Bit black and white copy of your processed image into a new document.

The resulting file has been up-sized to 1200dpi with high retention of detail.

1 Bit images are especially useful for placement in Adobe Illustrator and InDesign where they can be used transparently and have color applied.

To use transparently in Illustrator, save the exported file as .tif

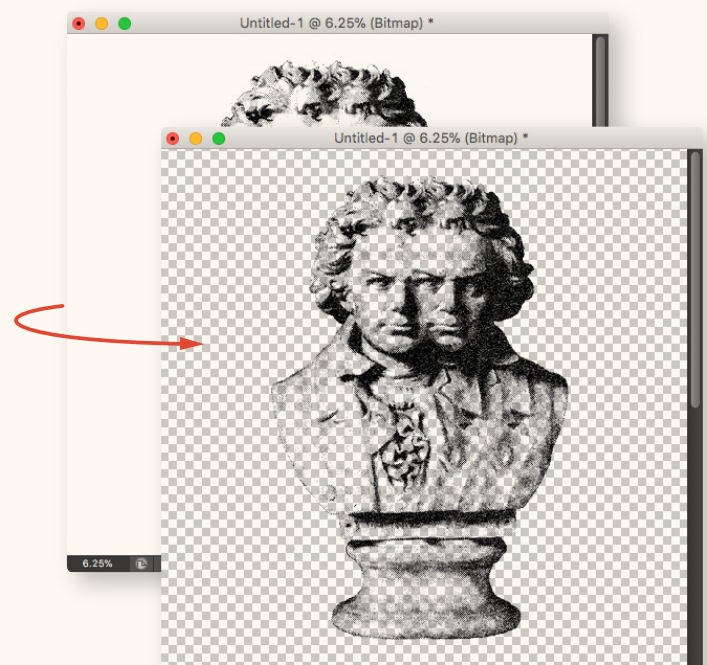


4 REMOVE WHITE FROM 1 BIT IMAGE

This actions removes the white background from your image leaving only your halftoned image on a transparent background.

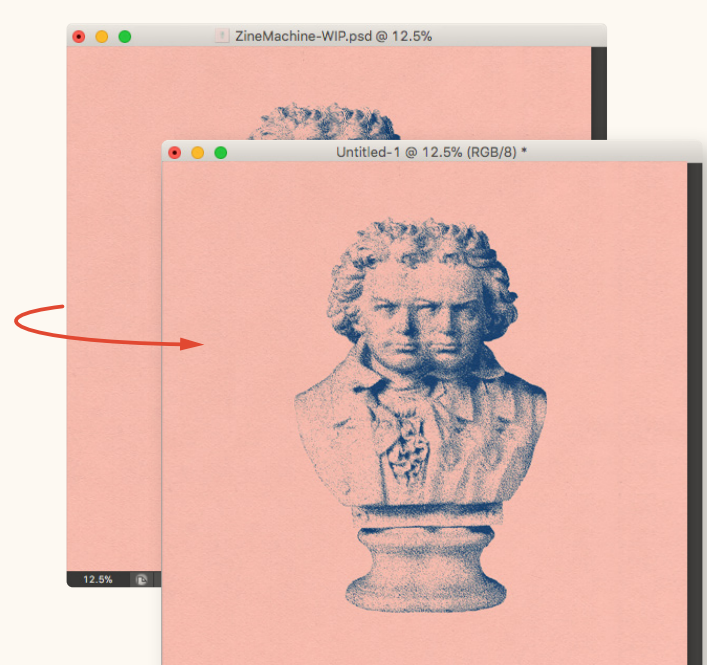
This action works only on 1 Bit black and white images.

To retain transparency save as .psd or .png



5 DUPLICATE COMPOSITE LAYERS INTO NEW DOCUMENT

This action automatically selects your flattened composite layers created using the "Render Flattened Composite" action (1) and places them in a new document for further compositing.



Share Your Work

We regularly share our favorite customer work on our gallery page and Instagram so if you make something rad don't forget to tag us.

@truegrittexturesupply

True Grit Help & Support

We're always here to help with issues related to any True Grit Texture Supply product if you get stuck or things get weird.

VISIT TRUE GRIT SUPPORT

Photoshop Help & Support

Visit Adobe support for in-depth tutorials, to report a bug, search help forums or get one-on-one help with any Photoshop specific issue.

VISIT ADOBE SUPPORT

TRUE GRIT
TEXTURE
SUPPLY

© True Grit Texture Supply