

# IGUANA ART DESIGN

---

MANTELS · SHELVES · FURNITURE · ART



We extend our heartfelt thanks for selecting one of our exquisite handcrafted mantels! We're delighted to accompany you on this journey toward enhancing your home. Installing your new mantel is designed to be a breeze with our detailed instructions. However, for added peace of mind and flawless execution, we suggest enlisting the expertise of a skilled carpenter or handyman.

Should any questions arise during the process, please don't hesitate to reach out. Our dedicated team is here to assist you every step of the way. Feel free to give us a call at 801-577-9634.

Your satisfaction is our top priority, and we're committed to ensuring your experience with our products is nothing short of exceptional. Thank you once again for choosing us!



## **TOOLS NEEDED:**

Drill With #2 Phillips Driver Bit

Level

Pencil

Stud Finder

Tape Measure

1/2" Socket Driver Or Wrench



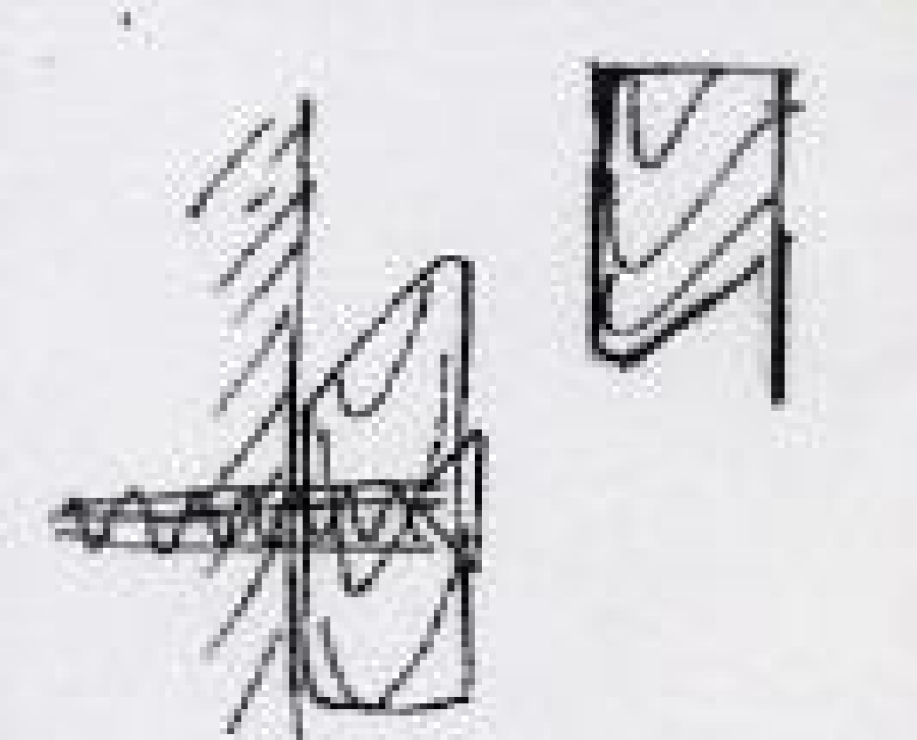
Decide where you'd like your new mantel to be located. Using a level, make a level mark  $4\frac{3}{4}$ " below the desired finished overall height. This will be the bottom of the wall mounting board.



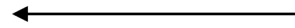
Locate framing studs using a stud finder (framing studs are usually 16" on center) The wall mounting board is predrilled at 2" spacing to accommodate the center of framing studs. Align holes in the mounting board over studs. Using the drill and #2 driver bit, tighten the screws in securing the mounting board to the wall. Additional holes may be drilled through the wall mounting board if needed.



If your mantel came with corbels attach them now through the predrilled holes with the washers and 1/2" nuts. Tighten nuts securely. **DO NOT OVER TIGHTEN.**



Reverse  
Mounting Board  
Inside Mantel



Wall Mounting  
Board

Place the shelf over the wall mounting board by locking the angles one over the other. The reverse mounting board inside the shelf is glued permanently in place allowing the shelf to hang securely.

You're done!

Please don't hesitate to give us a call at 801-577-9634 if you run into any issues.