

# Audo

COPENHAGEN



HASHIRA COLLECTION  
Designed by *Norm Architects*



HASHIRA PENDANT  
Designed by *Norm Architects*

Translucent, cylindrical fabric shade with metal frame, textile cord and dimmer switch.

Ø18



RAW  
1502699

Ø30



WHITE  
1503059



RAW  
1503699

PRODUCT TYPE  
Pendant

COLLI  
2

ENVIRONMENT  
Indoor

DIMENSIONS

Ø18  
H: 60 cm / 23,6"  
Ø: 18 cm / 7,1"

Ø30  
H: 90 cm / 35,4"  
Ø: 30 cm / 11,8"

PRODUCTION PROCESS  
Welded steel frame with a hand-made shade.

COLOUR  
White, bronzed brass  
Raw, bronzed brass

MATERIALS  
Steel, linen, PS plastic.  
Thickness of line may vary giving a slightly different light.

TECHNICAL SPECIFICATIONS

WEIGHT  
Ø18: 1,15 kg / 2,54 lb  
Ø30: 2,00 kg / 4,41 lb

VOLTAGE  
CE: 220-230 V  
US: 110-130 V

LIGHT SOURCE  
E27 (CE) - 1 pc / Small, 2 pcs / Large  
E26 (US) - 1 pc / Small, 2 pcs / Large

Max 40 Watt

LIGHT SPECIFICATION  
Bulbs not included

DIMMER  
No. The lamp can be connected to a dimmer system

CANOPY  
Yes, ABS, black  
Ø: 11,5 cm / 4,5"  
H: 3,8 cm / 1,5"

CORD MATERIAL AND COLOUR  
Textile, black, with safe wire (only the large pendant).

CORD LENGTH  
500 cm / 197"

CLASSIFICATION  
IP20, Class II

CERTIFICATIONS  
CE and ETL certified, tests can be obtained upon request.

PACKAGING TYPE  
Ø18: Gift box  
Ø30: Brown box

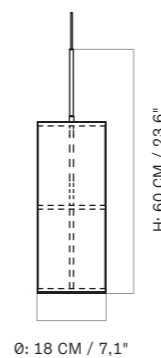
PACKAGING MEASUREMENTS  
(H × W × D)

Ø18  
24 cm × 24 cm × 50 cm /  
9,4" × 9,4" × 19,7"

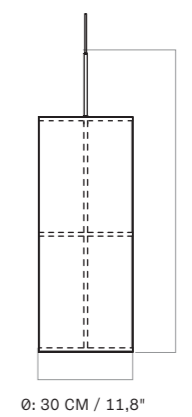
Ø30  
37 cm × 37cm × 80 cm /  
14,6" × 14,6" × 31,5"

MATERIALS & MAINTENANCE  
Please visit [audocph.com](http://audocph.com) for materials, care and maintenance instructions.

Ø18



Ø30





HASHIRA PENDANT, CLUSTER  
Designed by *Norm Architects*

Translucent, cylindrical fabric shade with metal frame, textile cord and dimmer switch.

Cluster, Ø32



RAW  
1504699

Cluster, Ø60



WHITE  
1505059



RAW  
1505699

TECHNICAL SPECIFICATIONS

PRODUCT TYPE  
Pendant

COLLI  
1

ENVIRONMENT  
Indoor

DIMENSIONS

Ø32  
H: 60 cm / 23,6"  
Ø: 37 cm / 14,6"

Ø60  
H: 90 cm / 35,4"  
Ø: 61,5 cm / 24,2"

PRODUCTION PROCESS  
Welded steel frame with a hand-made shade.

COLOUR  
White, bronzed brass  
Raw, bronzed brass

MATERIALS  
Steel, linen, PS plastic.  
Thickness of line may vary giving a slightly different light.

WEIGHT  
Ø32: 3,13 kg / 6,90 lb  
Ø60: 5,85 kg / 12,90 lb

VOLTAGE  
CE: 220-230 V  
US: 110-130 V

LIGHT SOURCE  
E27 (CE) - 3 pcs / Small, 6 pcs / Large  
E26 (US) - 3 pcs / Small, 6 pcs / Large

Max 40 Watt

LIGHT SPECIFICATION  
Bulbs not included

DIMMER  
No. The lamp can be connected to a dimmer system

CANOPIY  
Yes, ABS, black  
Ø: 11,5 cm / 4,5"  
H: 3,8 cm / 1,5"

CORD MATERIAL AND COLOUR  
Textile, black, with safe wire.

CORD LENGTH  
500 cm / 197"

CLASSIFICATION  
IP20, Class II

CERTIFICATIONS  
CE and ETL certified, tests can be obtained upon request.

PACKAGING TYPE  
Brown box

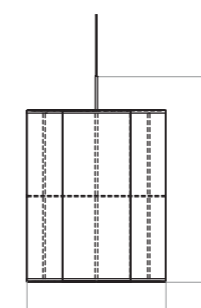
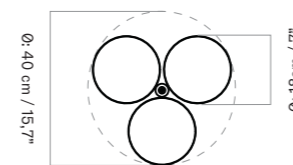
PACKAGING MEASUREMENTS  
(H x W x D)

Ø32  
43,5 cm x 43,5 cm x 49 cm /  
9,4" x 9,4" x 19,3"

Ø60  
67,5 cm x 67,5 cm x 78 cm /  
26,6" x 26,6" x 30,7"

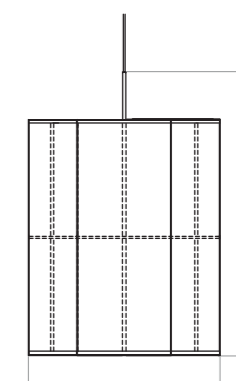
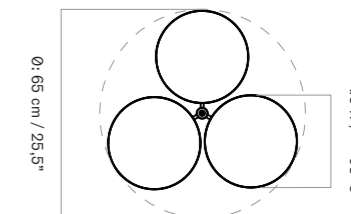
MATERIALS & MAINTENANCE  
Please visit [audocph.com](http://audocph.com) for materials, care and maintenance instructions.

CLUSTER, Ø32



W: 37 cm / 14,5"

CLUSTER, Ø60



W: 61,5 cm / 24,2"



HASHIRA TABLE LAMP  
Designed by *Norm Architects*

Translucent, cylindrical fabric shade with metal frame, textile cord and dimmer switch.



RAW  
1500699

PRODUCT TYPE  
Table lamp

COLLI  
2

ENVIRONMENT  
Indoor

DIMENSIONS  
H: 49,5 cm / 19,5"  
Ø: 18 cm / 7,1"

PRODUCTION PROCESS  
Welded steel frame with a hand-made shade and sandblasted wood base.

COLOUR  
Raw, stained oak

MATERIALS  
Steel, linen, PS plastic, ash.  
Thickness of line may vary giving a slightly different light.

TECHNICAL SPECIFICATIONS

WEIGHT  
1,48 kg / 3,26 lb

VOLTAGE  
CE: 220-230 V  
US: 110-130 V

LIGHT SOURCE &  
ENERGY EFFICIENCY CLASS  
E27 (CE) - 1 pc  
E26 (US) - 1 pc

Max 40 Watt

LIGHT SPECIFICATION  
Bulbs not included.

DIMMER  
Yes, on cord.

CANOPY  
N / A

CORD MATERIAL AND COLOUR  
Textile, black, plug, black.

CORD LENGTH  
200 cm / 78,7"

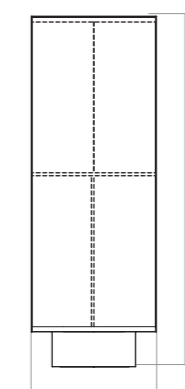
CLASSIFICATION  
IP20, Class II

CERTIFICATIONS  
CE and ETL certified, tests can be obtained upon request.

PACKAGING TYPE  
Gift box

PACKAGING MEASUREMENTS  
(H × W × D)  
53,5 cm × 24 cm × 24 cm /  
21,1" × 9,4" × 9,4"

MATERIALS & MAINTENANCE  
Please visit [audocph.com](http://audocph.com) for materials, care and maintenance instructions.



Ø: 18 cm / 7,1"

H: 49,5 cm / 19,5"



# HASHIRA WALL LAMP

Designed by *Norm Architects*

Taking its design cues from traditional Japanese lanterns, the Hashira Wall Lamp has a translucent textile shade that softly diffuses the light. Conceived for Audo by Norm Architects, it looks equally elegant mounted alone as it does in pairs above a bed or sofa.

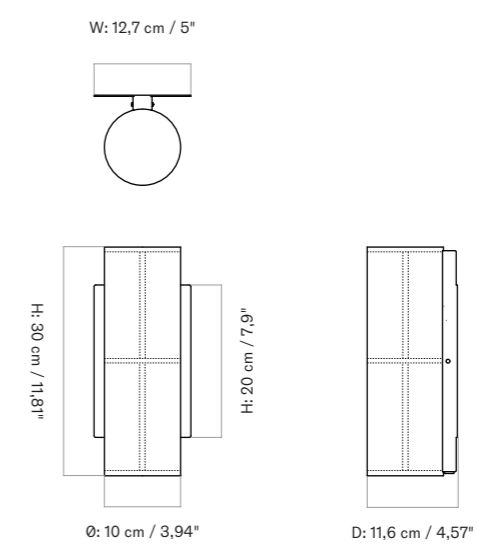


RAW  
1506699U

<b>PRODUCT TYPE</b> Wall lamp
<b>COLLI</b> 2
<b>ENVIRONMENT</b> Indoor
<b>DIMENSIONS</b> H: 30 cm / 11,81" W: 12,7 cm / 5" D: 11,6 cm / 4,57" Ø: 10 cm / 3,94"
<b>PRODUCTION PROCESS</b> Laser cut and welded steel frame with a hand-made shade.
<b>COLOUR</b> Raw Black (RAL 9005)
<b>MATERIALS</b> Powder coated steel, linen, PS plastic
<b>WEIGHT</b> 0,92 kg / 2 lb

<b>TECHNICAL SPECIFICATIONS</b>
<b>VOLTAGE</b> CE: 220-230 V US: 110-130 V
<b>LIGHT SOURCE</b> Replaceable LED 4 W
<b>LIGHT SPECIFICATION</b> 4 W 380 lm 2700K Ra > 80 Energy class: G
<b>DIMMER</b> N / A
<b>CANOPY</b> N / A

<b>CORD MATERIAL AND COLOUR</b> Comes without cord
<b>CORD LENGTH</b> N / A
<b>CLASSIFICATION</b> IP20, Class II
<b>CERTIFICATIONS</b> ETL certified, tests can be obtained upon request.
<b>PACKAGING TYPE</b> Gift box
<b>PACKAGING MEASUREMENTS</b> (H x W x D) 35,8 cm x 22,7 cm x 16,1 cm / 14" x 8,9" x 6,3"
<b>MATERIALS &amp; MAINTENANCE</b> Please visit <a href="http://audo Copenhagen.com">audo Copenhagen.com</a> for materials, care and maintenance instructions.





HASHIRA FLOOR LAMP  
Designed by *Norm Architects*

Translucent, cylindrical fabric shade with metal frame, textile cord and dimmer switch.



RAW  
1501699

PRODUCT TYPE  
Floor lamp

COLLI  
1

ENVIRONMENT  
Indoor

DIMENSIONS  
H: 83 cm / 32,7"  
Ø: 30 cm / 11,8"

PRODUCTION PROCESS  
Welded steel frame with a hand-made shade and sandblasted wood base.

COLOUR  
Raw, stained oak

MATERIALS  
Steel, linen, PS plastic, ash  
Thickness of line may vary giving a slightly different light.

WEIGHT  
6,51 kg / 14,35 lb

TECHNICAL SPECIFICATIONS

VOLTAGE  
CE: 220-230 V  
US: 110-130 V

LIGHT SOURCE &  
ENERGY EFFICIENCY CLASS  
E27 (CE) - 2 pcs  
E26 (US) - 2 pcs

Max 40 Watt

LIGHT SPECIFICATION  
Bulbs not included.

DIMMER  
Yes, on cord.

CANOPY  
N / A

CORD MATERIAL AND COLOUR  
Textile, black, plug, black.

CORD LENGTH  
300 cm / 118"

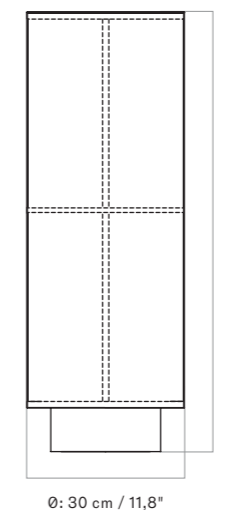
CLASSIFICATION  
IP20, Class II

CERTIFICATIONS  
CE and ETL certified, tests can be obtained upon request.

PACKAGING TYPE  
Brown box

PACKAGING MEASUREMENTS  
(H × W × D)  
37 cm × 37 cm × 88 cm /  
14,6" × 14,6" × 34,6"

MATERIALS & MAINTENANCE  
Please visit [audocph.com](http://audocph.com) for materials, care and maintenance instructions.





HASHIRA FLOOR LAMP, HIGH  
Designed by *Norm Architects*

Set on an elegant powder-coated steel foot for an elevated and airy expression, the Japanese-inspired Hashira High Floor Lamp by Norm Architects illuminates spaces with soft light, elegantly diffused through its tactile fabric shade.



WHITE  
1507059



RAW  
1507699

PRODUCT TYPE  
Floor lamp

COLLI  
1

ENVIRONMENT  
Indoor

DIMENSIONS  
H: 130 cm / 51,1"  
Ø: 30 cm / 11,8"

PRODUCTION PROCESS  
Laser cut and welded steel frame with a hand-made shade.

COLOUR  
Raw, stained oak  
White, stained oak  
Black (RAL 9005)

MATERIALS  
Powder coated steel, linen, PS plastic.

WEIGHT  
N / A

VOLTAGE  
CE: 220-230 V  
US: 110-130 V

TECHNICAL SPECIFICATIONS

LIGHT SOURCE  
E27 (CE) - 2 pcs  
E26 (US) - 2 pcs

Max 40 Watt

LIGHT SPECIFICATION  
Bulbs not included.

DIMMER  
Yes, on cord.

CANOPY  
N / A

CORD MATERIAL AND COLOUR  
Textile, black, plug, black.

CORD LENGTH  
220 cm / 86"

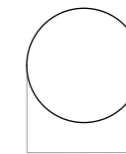
CLASSIFICATION  
IP20, Class II

CERTIFICATIONS  
CE and ETL certified, tests can be obtained upon request.

PACKAGING TYPE  
Brown box

PACKAGING MEASUREMENTS  
(H × W × D)  
81,5 cm × 76,4 cm × 40,3 cm /  
32" × 30" × 15,8"

MATERIALS & MAINTENANCE  
Please visit [audocph.com](http://audocph.com) for materials, care and maintenance instructions.



Ø: 30 cm / 11,81"

