

2024

Fabric Overview UK

ferm
LIVING

Made To Order & Customisation Concept

The Customisation Concept serves as an overview of the various textiles and types of leather available for firm LIVING's upholstered furniture. The materials have been handpicked so you can make our furniture your own.

ONE SIZE DOESN'T FIT ALL

Our homes are distinct, personal spaces that uniquely reflect the people who live there. They say the magic happens in the details, and often, that's what makes us fall in love with a specific piece that we want to move into our home. That is precisely why we have introduced the firm LIVING customisation concept, so that you can tailor selected pieces to fit your specific taste.

With our Made to Order products, you can choose between a wide variety of fabrics and leathers that we have selected among leading textile and leather suppliers, making it possible for you to customise your furniture with an array of materials and colour combinations.

THE PERFECT FIT

The majority of our sofas and seating collection are included in the customisation concept. Among them are Catena, Rico, Turn, Dase, Buur and family of Herman Chairs.

For our sofas, you can choose between an exciting variety of textiles that range from faded velvet, cottons, linens and wool, available in an array of colours and patterns from premium fabric suppliers that include Kvadrat, Sørensen Leather and Gabriel.

For our Herman Chairs, there are a wide range of options available: customise everything from the frame to the colour of wooden backrest, and choose between various seat fabrics, woods and leathers to form your ideal chair.

To see a complete selection of our Made to Order materials, please refer to the Customisation Concept section of our Product Overview, where you can get an overview of all of the different customisation options that we offer.

We are also happy to upholster furniture using non-standard fabric options and customer's own materials (COM) upon fabric approval. For further information please contact our Sales Representatives.

FABRIC & LEATHER OPTIONS

	CATENA COLLECTION	RICO COLLECTION	HERMAN COLLECTION	TURN COLLECTION	DASE COLLECTION	BUUR COLLECTION
<i>Price Group 1</i>						
Cotton Linen	•				•	
Soft Bouclé	•	•	•		•	•
Soft FR		•				
<i>Price Group 2</i>						
Linara FR*	•			•		
Rich Velvet		•			•	•
<i>Price Group 3</i>						
Bouclé	•	•	•	•	•	•
Check	•					
Louisiana	•	•				
Nordic Bouclé	•	•			•	•
Pasadena	•			•		
<i>Price Group 4</i>						
Classic Linen	•					
Confetti Bouclé	•	•			•	
Leather - Ultra			•			
Tonus 4*		•	•	•	•	•
Wool Bouclé	•	•				
<i>Price Group 5</i>						
Hallingdal 65	•	•	•	•	•	
Leather - Envy			•			

* Extra Crib5 FR treatment available, 10% upcharge

COTTON LINEN

Composition

60% cotton
40% linen

Fire rating

CAL117: pass
EN 1021 1/2: not pass
BS 5852 0,1 C&M: pass with a
Crib5 interliner - on request
BS 5852 Crib5: not pass

Martindale

24.000

Price group

1

Care instructions

Vacuum frequently on medium power.
Remove wet stains by carefully dabbing with
a lint-free cloth or sponge wrung in warm
detergent-free water. If the stain remains,
we recommend professional dry cleaning.

Colour fastness to light

Scale 1-5 or 1-8; 1 worst and 5 or 8 best
4 (8)

Pass for

Catena
Dase
Turn



Natural

SOFT BOUCLÉ

Composition

90% polyester
5% cotton
5% polyacrylic

Fire rating

CAL117: pass
EN 1021 1/2: not tested
BS 5852 0,1 C&M: pass with treatment
Crib5: not pass

Martindale

75.000

Price group

1

Care instructions

Vacuum frequently on medium power.
Remove wet stains by carefully dabbing with a lint-free cloth or sponge wrung in warm detergent-free water. If the stain remains, we recommend professional dry cleaning.

Colour fastness to light

Scale 1-5 or 1-8; 1 worst and 5 or 8 best
5 (5)

Pass for

Buur
Catena
Dase
Herman
Rico



Off-White/Sand



Natural



Dark Brown

SOFT FR

Composition

95% polyester, 5% polyamide

Fire rating

EN 1021 1/2: not tested
CAL117: not tested
BS 5852 0,1 C&M: pass
BS 5852 Crib5: not pass

Martindale

45.000

Price group

1

Care instructions

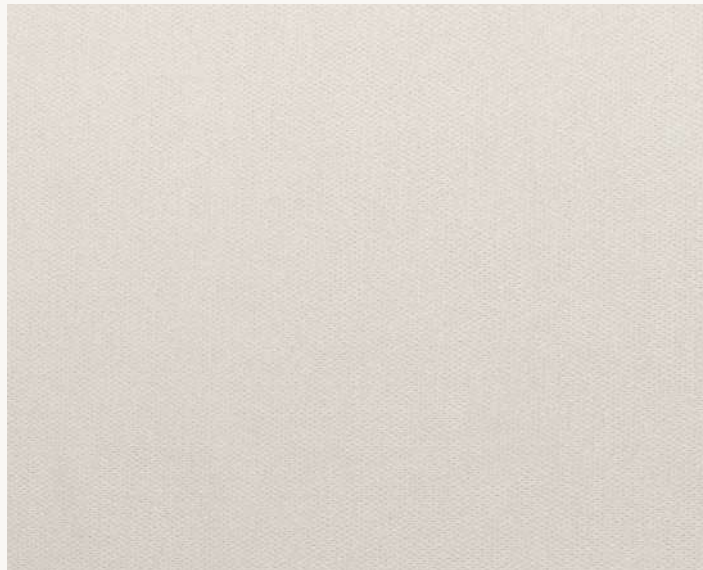
Vacuum frequently on medium power.
Remove wet stains by carefully dabbing with a lint-free cloth or sponge wrung in warm detergent-free water. If the stain remains, we recommend professional dry cleaning.

Colour fastness to light

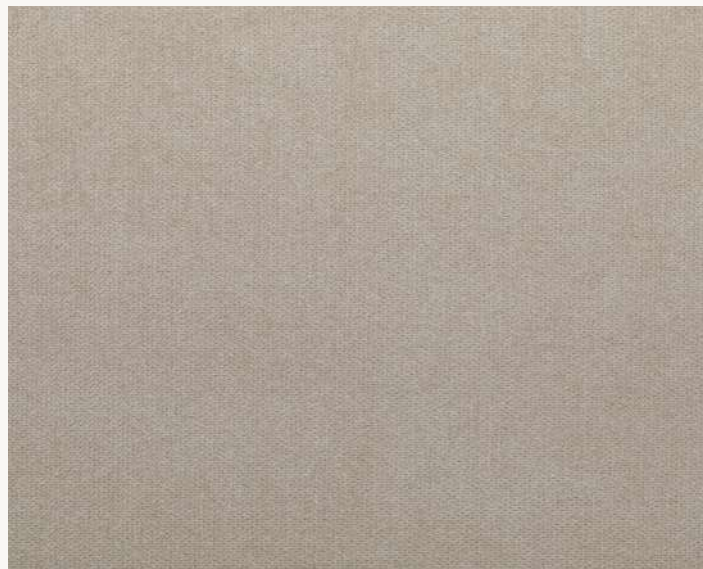
Scale 1-5 or 1-8; 1 worst and 5 or 8 best
6 (8)

Pass for

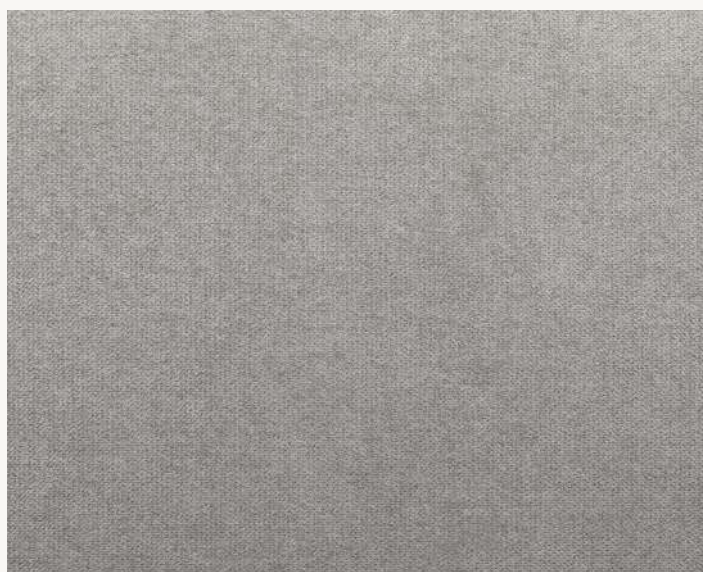
Rico



901 Off-White



904 Sand



805 Grey

LINARA FR

By Romo

Composition

63% cotton
37% polyester

Fire rating

EN 1021 1/2: pass
CAL 117: not pass
BS 5852 0,1 C&M: Pass
BS 5852 Crib 5: pass with treatment

Martindale

36.000

Price group

2

Care instructions

Vacuum frequently on medium power.
Remove wet stains by carefully dabbing with a lint-free cloth. If the stain remains, we recommend professional dry cleaning.

Colour fastness to light

Scale 1-5 or 1-8; 1 worst and 5 or 8 best
5-6 (8)

Pass for

Catena
Turn

More information [here](#).

ferm LIVING colour selection (fabric swatches available)



B2494/93

B2494/66

B2494/89

All available colours



LINARA FR

By Romo

Composition

63% cotton
37% polyester

Fire rating

EN 1021 1/2: pass
CAL 117: not pass
BS 5852 0, 1 C&M: Pass
BS 5852 Crib 5: pass with treatment

Martindale

36.000

Price group

2

Care instructions

Vacuum frequently on medium power.
Remove wet stains by carefully dabbing with a lint-free cloth. If the stain remains, we recommend professional dry cleaning.

Colour fastness to light

Scale 1-5 or 1-8; 1 worst and 5 or 8 best
5-6 (8)

Pass for

Catena
Turn

More information [here](#).



LINARA FR

By Romo

Composition

63% cotton
37% polyester

Fire rating

EN 1021 1/2: pass
CAL 117: not pass
BS 5852 0,1 C&M: Pass
BS 5852 Crib 5: pass with treatment

Martindale

36.000

Price group

2

Care instructions

Vacuum frequently on medium power.
Remove wet stains by carefully dabbing with a lint-free cloth. If the stain remains, we recommend professional dry cleaning.

Colour fastness to light

Scale 1-5 or 1-8; 1 worst and 5 or 8 best
5-6 (8)

Pass for

Catena
Turn

More information [here](#).



RICH VELVET

Composition
100% polyester

Fire rating
CAL117: pass
EN 1021 1/2: pass
BS 5852 0,1 C&M: pass
BS 5852 Crib5: not pass

Martindale
170.000

Price group
2

Care instructions
Vacuum frequently on medium power.
Remove wet stains by carefully dabbing with a lint-free cloth or sponge wrung in warm detergent-free water.

Colour fastness to light
Scale 1-5 or 1-8; 1 worst and 5 or 8 best
6 (8)

Pass for
Buur
Dase
Rico

[More information here.](#)

ferm LIVING colour selection (fabric swatches available)



26 Beige 32

104 Pine

All available colours



1 Red 16

2 Navy 23

3 Green 11

4 Black 41

5 Yellow 47



6 Brown 5

7 Grey 20

12 Denim 38

13 Moss green 68

16 Sand 31



17 Warm grey 4

21 Rust 67

22 Petrol 26

23 Mint 12

26 Beige 32



27 Silver 40

31 Orange 52

32 Diesel 69

33 Lagoon 27

36 Soft brown 55



37 Concrete 51

42 Royal blue 28

43 Deep green 37

46 Coffee 54

47 Dark grey 21



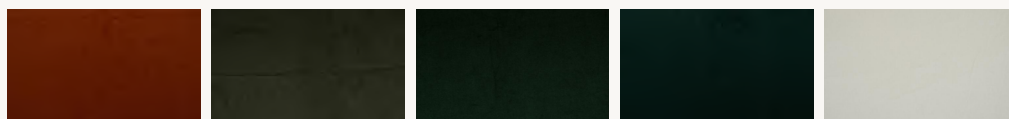
52 Racing blue 60

61 Bordeaux 65

81 Pastel pink 34

79 Honey

90 Gold



53 Terra

104 Pine

73 Bonzai

70 Bottle green

30 Bone



75 Orchid

123 Plum

110 Sky

108 Platinum

BOUCLÉ

Composition

35% acrylic
24% polyester
19% viscose
14% cotton
5% linen
3% other fibres

Fire rating

CAL117: pass
EN 1021 1/2: pass
BS 5852 0,1 C&M: pass
BS 5852 Crib5: not pass

Martindale

30.000

Price group

3

Care instructions

Vacuum frequently on medium power.
Remove wet stains by carefully dabbing with a lint-free cloth or sponge wrung in warm detergent-free water. If the stain remains, we recommend professional dry cleaning.

Colour fastness to light

Scale 1-5 or 1-8; 1 worst and 5 or 8 best
4-5 (8)

Pass for

Buur
Catena
Dase
Herman
Rico
Turn



Off-White



Sand

CHECK

Composition

30% wool, 20% acrylic, 15% cotton, 15% polyester, 10% linen, 10% viscose

Fire rating

CAL117: pass
EN 1021 1/2: pass
BS 5852 0,1 C&M: pass
BS 5852 Crib5: not pass

Martindale

28.000

Price group

3

Care instructions

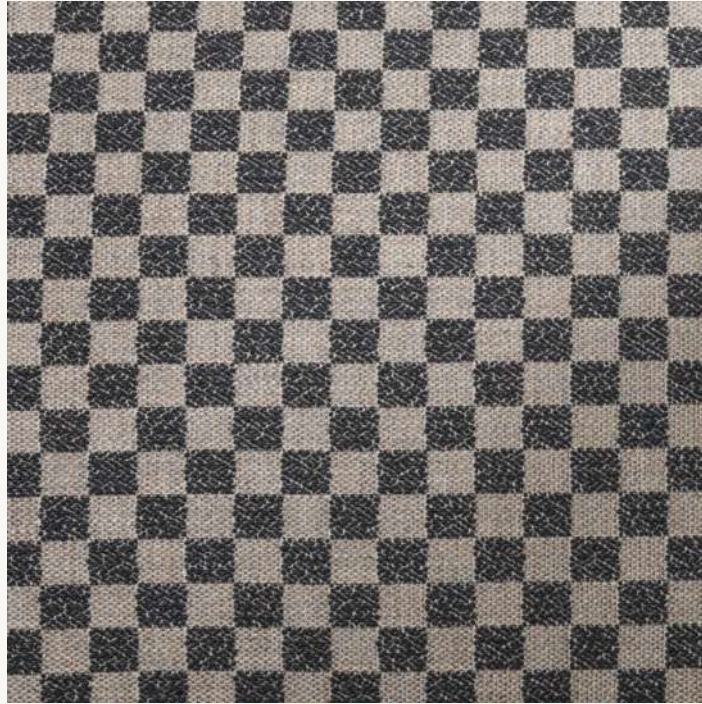
Vacuum frequently on medium power.
Remove wet stains by carefully dabbing with a lint-free cloth or sponge wrung in warm detergent-free water. If the stain remains, we recommend professional dry cleaning.

Colour fastness to light

Scale 1-5 or 1-8; 1 worst and 5 or 8 best
4-5 (8)

Pass for

Catena



Sand/Black

LOUISIANA

Composition

20% wool
20% viscose
15% linen
15% cotton
15% polyester
15% acrylic

Fire rating

CAL117: pass
EN 1021 1/2: pass with treatment
BS 5852 0.1 C&M: pass with treatment
BS 5852 Crib5: not pass

Martindale

30.000

Price group

3

Care instructions

Vacuum frequently on medium power. Remove wet stains by carefully dabbing with a lint-free cloth or sponge wrung in warm detergent-free water. If the stain remains, we recommend professional dry cleaning.

Colour fastness to light

Scale 1-5 or 1-8; 1 worst and 5 or 8 best
5 (8)

Pass for

Catena
Buur
Rico (not available for Rico Sofa Curve)



Sand/Black

NORDIC BOUCLÉ

Composition

30% wool
30% cotton
30% acrylic
5% polyester
5% other fibers

Fire rating

CAL117: pass
EN 1021 1/2: not tested
BS 5852 0,1 C&M: pass with treatment
Crib5: not pass

Martindale

25.000

Price group

3

Care instructions

Remove wet stains by carefully dabbing with a lint-free cloth or sponge wrung in warm detergent-free water. If the stain remains, we recommend professional dry cleaning.

Colour fastness to light

Scale 1-5 or 1-8; 1 worst and 5 or 8 best
4 (8)

Pass for

Buur
Catena
Dase
Rico



Off-white

PASADENA

Composition

34% linen
27% viscose
17% polyester
12% cotton
8% wool
2% acrylic

Fire rating

CAL117: pass
EN 1021 1/2: pass with treatment
BS 5852 0,1 C&M: pass with treatment
BS 5852 Crib5: not pass

Martindale

30.000

Price group

3

Care instructions

Vacuum frequently on medium power.
Remove wet stains by carefully dabbing with a lint-free cloth or sponge wrung in warm detergent-free water. If the stain remains, we recommend professional dry cleaning.

Colour fastness to light

Scale 1-5 or 1-8; 1 worst and 5 or 8 best
5 (8)

Pass for

Catena
Turn



Sand/Black

CLASSIS LINEN

Composition
100% Linen

Fire rating
EN 1021 1/2: pass
CAL117: pass
BS 5852 0, 1 C&M: pass
BS 5852 Crib5: not pass

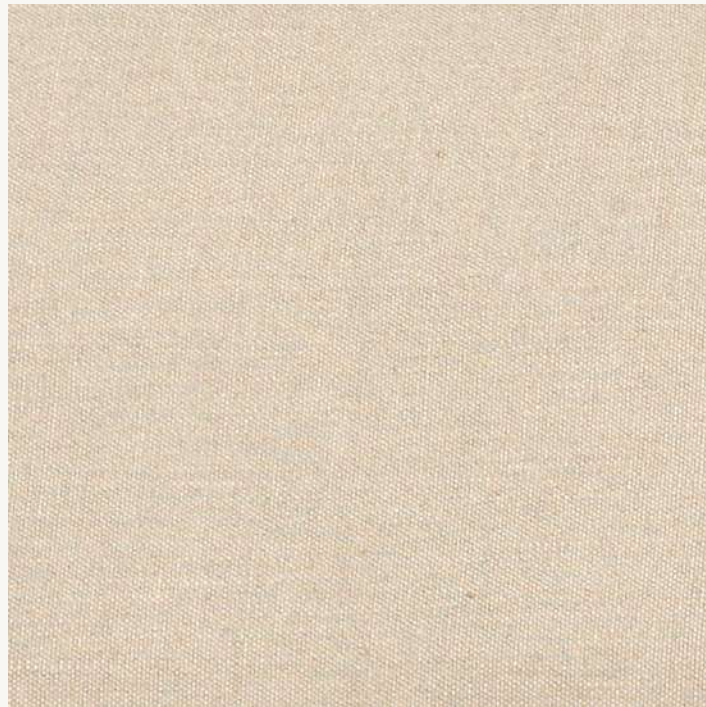
Martindale
25.000

Price group
4

Care instructions
Vacuum frequently on medium power.
Remove wet stains by carefully dabbing with a lint-free cloth or sponge wrung in warm detergent-free water. If the stain remains, we recommend professional dry cleaning.

Colour fastness to light
Scale 1-5 or 1-8; 1 worst and 5 or 8 best
4 (5)

Pass for
Catena



Natural

CONFETTI BOUCLÉ

Composition

40% cotton, 22% acrylic, 16% viscose,
11% wool, 11% polyester

Fire rating

CAL117: pass
EN 1021 1/2: pass
BS 5852 0,1 C&M: pass
BS 5852 Crib5: not pass

Martindale

100.000

Price group

4

Care instructions

Vacuum frequently on medium power.
Remove wet stains by carefully dabbing with
a lint-free cloth or sponge wrung in warm
detergent-free water. If the stain remains,
we recommend professional dry cleaning.

Colour fastness to light Scale 5 (8)

Pass for

Catena
Dase
Rico



Light Grey

ULTRA LEATHER

By Sørensen Leather

Composition

100% protected leather

Fire rating

CAL117: pass
EN 1021 1/2: pass
BS 5852 0,1 C&M: pass
BS 5852 Crib5: pass with treatment

Price group

4

Care instructions

Vacuum frequently with a soft brush. For stains use boiled water with natural soap. Whip 2-3 tablespoons of soap flakes in 1 litre water and only use the foam. Apply the foam with a soft cloth, let it dry and wipe off the leather thoroughly with a soft cotton cloth.

Colour fastness to light

Scale 5-7 (8)

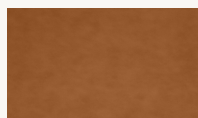
≥ 5 (8)

Pass for

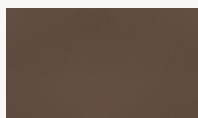
Herman

More information [here](#).

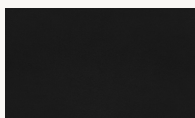
ferm LIVING colour selection (fabric swatches available)



Brandy - 41574

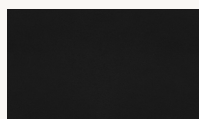


Safari - 41586



Black - 41599

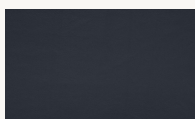
All available colours



Black - 41599



Black Brown - 41590



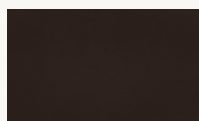
Navy - 41573



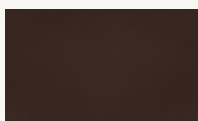
Anthrazite - 41580



Lava - 41575



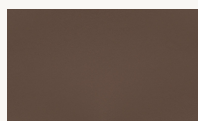
Chocolate - 41589



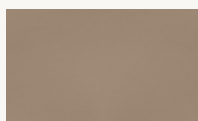
Brown - 41588



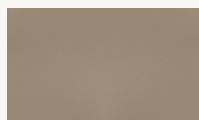
Grey - 41585



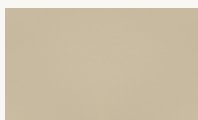
Safari - 41586



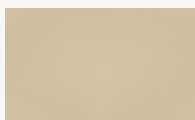
Earth - 41584



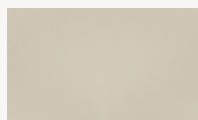
Altweiss - 41576



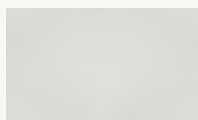
Marble - 41583



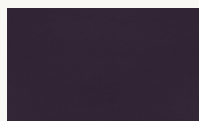
Sand - 41582



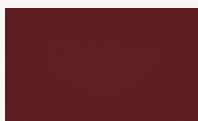
Eggshell - 41581



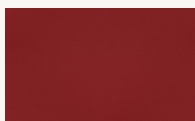
White - 41594



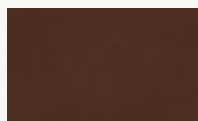
Purple - 41593



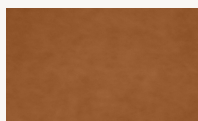
Brick - 41579



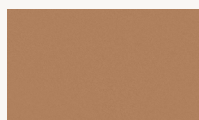
Poppy - 41578



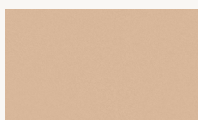
Cognac - 41598



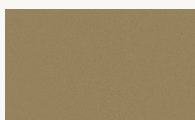
Brandy - 41574



Camel - 41571



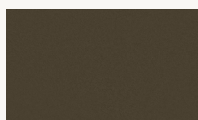
Honey - 41572



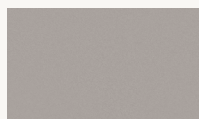
Leaf - 41566



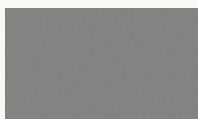
Marsh - 41570



Moss - 41569



Oat - 41568



Smoke - 41567

TONUS 4

By Kvadrat

Composition
90% new wool
10% helanca

Sustainability
EU Ecolabel
Greenguard Gold

Fire rating
CAL117: pass
EN 1021 1/2: pass
BS 5852 0,1 C&M: pass
BS 5852 Crib5: pass with treatment

Martindale
100.000

Price group
4

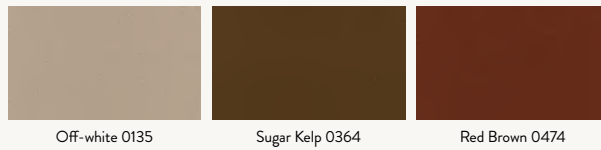
Care instructions
Vacuum frequently on medium power.
Remove wet stains by carefully dabbing with a lint-free cloth or sponge wrung in warm detergent-free water. If the stain remains, we recommend professional dry cleaning.

Colour fastness to light
Scale 1-5 or 1-8; 1 worst and 5 or 8 best
5-7 (8)

Pass for
Buur
Dase
Herman
Rico
Turn

More information [here](#).

ferm LIVING colour selection (fabric swatches available)



All available colours



WOOL BOUCLÉ

Composition

32% cotton, 61% wool and 7% nylon

Fire rating

CAL117: pass
EN 1021 1/2: pass
BS 5852 0,1 C&M: pass
BS 5852 Crib5: not pass

Martindale

25.000

Price group

4

Care instructions

Vacuum frequently on medium power.
Remove wet stains by carefully dabbing with a lint-free cloth or sponge wrung in warm detergent-free water. If the stain remains, we recommend professional dry cleaning.

Colour fastness to light

Scale 1-5 or 1-8; 1 worst and 5 or 8 best
4 (5)

Pass for

Catena
Rico



Off-white



Natural



Sugar Kelp

HALLINGDAL 65

By Kvadrat

Composition

70% new wool
30% viscose

Sustainability

EU Ecolabel
Greenguard Gold

Fire rating

CAL117: pass
EN 1021 1/2: pass
BS 5852 0,1 C&M: pass
BS 5852 Crib5: pass

Martindale

100.000

Price group

5

Care instructions

Vacuum frequently on medium power.
Remove wet stains by carefully dabbing with a lint-free cloth or sponge wrung in warm detergent-free water. If the stain remains, we recommend professional dry cleaning.

Colour fastness to light

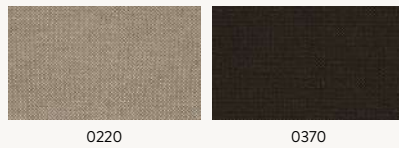
Scale 1-5 or 1-8; 1 worst and 5 or 8 best
5-7 (8)

Pass for

Catena
Dase
Herman
Rico
Turn

[More information here.](#)

ferm LIVING colour selection (fabric swatches available)



All available colours



LEATHER - ENVY

By Sørensen Leather

Composition

100% aniline leather

Fire rating

CAL117: pass
EN 1021 1/2: pass
BS 5852 0,1 C&M: not tested
BS 5852 Crib5: not pass

Price group

5

Care instructions

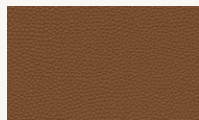
Vacuum frequently with a soft brush. For stains use boiled water with natural soap. Whip 2-3 tablespoons of soap flakes in 1 litre water and only use the foam. Apply the foam with a soft cloth, let it dry and wipe off the leather thoroughly with a soft cotton cloth.

Colour fastness to light Scale 3 (8)

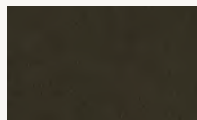
Pass for
Herman

More information [here](#).

ferm LIVING colour selection (fabric swatches available)



Olive - 20324



Cognac - 20320

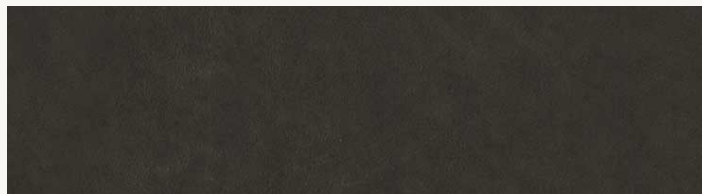


Black - 20321

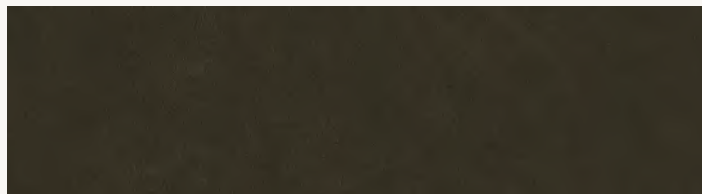
All available colours



Black - 20321



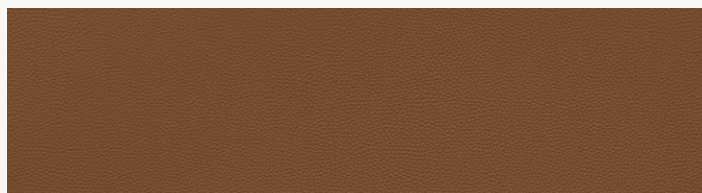
Anthrazite - 20323



Olive - 20324



Nougat - 20322



Cognac - 20320

For more information please contact your
firm LIVING sales contact

Space to feel comfortably you