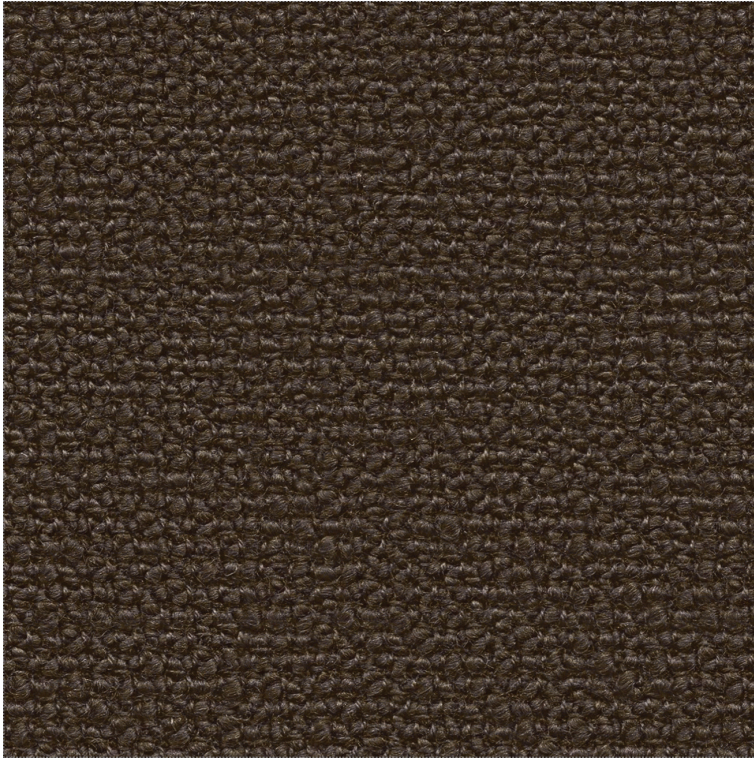


Camira

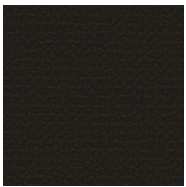
Yoredale

Grade 2



Composition: 95% Wool, 3% Polyester, 2% Polyamide
Width/Weight: 138cm / 700g
Durability: 50,000 (martindale rubs)
Piling: 4 (ISO 105-X12)
Lightfastness: 5 out of 8
Fire Test: Please see supplier website for details
Sustainability: Indoor Advantage Gold

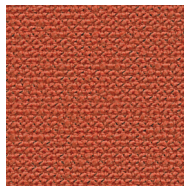
UDA06



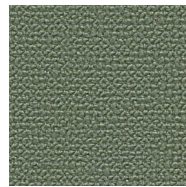
UDA01



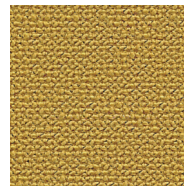
UDA02



UDA03



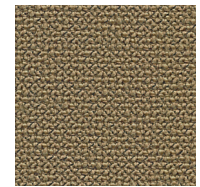
UDA04



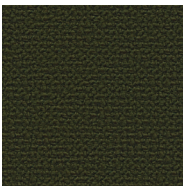
UDA05



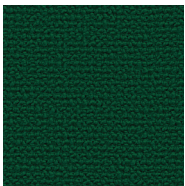
UDA06



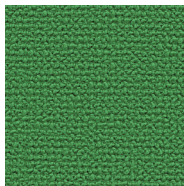
UDA07



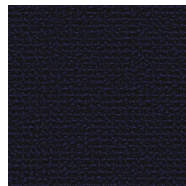
UDA08



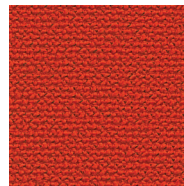
UDA09



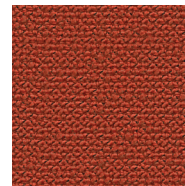
UDA10



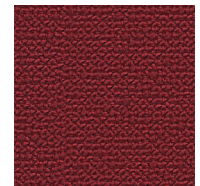
UDA11



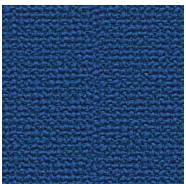
UDA12



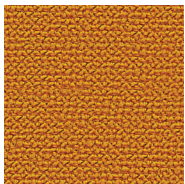
UDA13



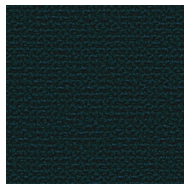
UDA14



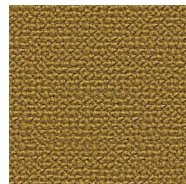
UDA15



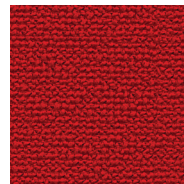
UDA16



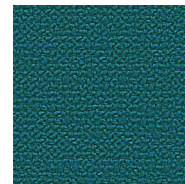
UDA17



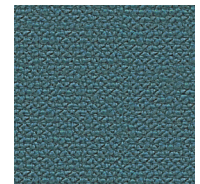
UDA18



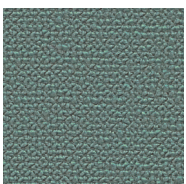
UDA19



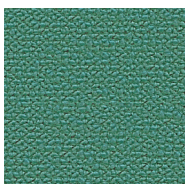
UDA20



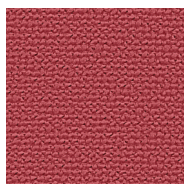
UDA21



UDA22



UDA23



UDA24



UDA25

Please note, fabrics pictured above may vary slightly from the actual product.

lercolani.com

L.ERCOLANI

09/22