

Audo



Textile

The Audo Upholstery Program is an overview of the textile and leathers available for Audo upholstered furniture. All textile and leather options are available in all colors. You'll find over 100 fabric and leather options, with the most popular configurations available with expedited delivery in our Quick Ship program. Custom upholstery orders from our Audo Upholstery Program (SPEC) are ready to ship with standard delivery lead times. Our Fixed Combinations listed in this Brand Book are suggested upholsteries selected by our design team, and deliver with standard lead times.

We are happy to upholster furniture using customer's own materials (COM) with extended delivery lead times, upon fabric approval. COM products are to be calculated by PC1T if in textile and PC1L if in leather, excluding the price of the fabric.

Please note that the color references in this upholstery programme are only intended as a guide. For further information please see manufacturer websites, or contact your local Audo Sales Representative for samples or further information.

KVADRAT.DK
SAHCO.COM
NEVOTEX.COM
JAB.DE
DANISHARTWEAVING.COM
DEDAR.COM



Use table to determine the upholstery options available for fabric-covered items.

	AFTERNOON	BRASILIA	CAIRN	CO CHAIR	CONSTANCE CHAIR	CONSTANCE SOFA	EAVE COLLECTION	HARBOUR CHAIR	HARBOUR LOUNGE CHAIR	INGEBORG	KNITTING CHAIR	MERKUR	MINGLE	MY OWN CHAIR	OFFSET	READY	TEAROOM CHAIR	TEAROOM SOFA	THE TIRED MAN	VILHELM	THE PENGUIN	ELIZABETH	ODA	PAGODE	RADIOHUS	THE SEAL	
PRICE CATEGORY 1																											
BARNUM BOUCLÉ, AUDIO	●	●	●	●	○	○	●	●	○	○	○	●	○	○	●	●	●	●	●	○	○	○		○	○	○	
CHAMPION, JAB	●	●	●	●	○	○	●	●		○	●	○	○	○	●	○	●	●	○	○	○	○		○	○	○	
HOT MADISON FR, JAB	○	○	○	○	○	○	○	○	○	○		○	○	○	○	○	○	○	○	○	○	○		○	○	○	
ILLUSION, NEVOTEX	○	○	○	○	○	○	○	○		○	●	○	○	○	○	○	○	○	○	○	○	○				○	○
MAPLE, KVADRAT	●	●	●	●	○	○	●	●		○	●	○	○	○	●	○	●	●	○	○							
REMIX, KVADRAT	●	●	●	●	○	○	●	●	●	○	●	○	○	●	●	●	●	●	○	○	●	●		●	●	●	
RE-WOOL, KVADRAT	●	○	●	●	○	○	●	●	●	○	○	○	○	○	●	●	●	○	○	○	●	●		●	●	●	
PRICE CATEGORY 2																											
CANVAS 2, KVADRAT	●	●	●	●	○	○	●	●	●	○	●	○	○	○	●	●	●	●	○	○	○	○		○	○	○	
CLAY, SAHCO, KVADRAT	●	●	○	●	○	○	●	●	○	○	○	○	○	○	●	○	●	●	○	○	○	○		○	○	○	
COLLINE, KVADRAT	●	●	○	●	○	○	●	●	●	●	●	○	●	●	●	●	●	●	○	●	○	○		○	○	○	
FIORD, KVADRAT	●	●	●	●	○	○	●	●	●	●	●	○	○	●	●	●	●	●	○	●	●	●	●	●	●	●	
HALLINGDAL 65, KVADRAT	●	●	●	●	●	●	●	●	●	●	●	●	●	●	●	●	●	●	●	●	●	●	●	●	●	●	
MOSS, SAHCO, KVADRAT	●	●	●	●	○	○	●	●	●	○	●	○	○	○	●	●	●	●	●	●	●	●	○	○	○	○	
STEELCUT, KVADRAT	●	○	●	●	○	○	●	●	●	○	○	○	○	○	●	○	●	○	○	○	○	●	●		○	○	●
STEELCUT TRIO 3, KVADRAT	●	○	●	●	○	○	●	●	●	○	●	○	○	○	●	○	●	●	○	●	●	●		○	○	●	
PRICE CATEGORY 3																											
SAFIRE, SAHCO, KVADRAT	●	●	●	●	○	○	●	●	●	○	●	○	○	●	○	○	●	●	○	○	●	○	○	○	●	●	○
VIDAR 4, KVADRAT	●	●	●	●	○	○	●	●	●	●	○	○	●	●	●	○	●	●	○	●	●	○	○	○	○	○	
PRICE CATEGORY 4																											
GRAND MOHAIR, DANISH ART WEAVING	○	○	●	●	●	●	●	○	●	●	○	○	●	○		○	○	●	○	●	○	○		○	○	○	
LUPO, DEDAR	●	○	○	●	○	○	●	●	○	○	○	○	○	○	●	○	●	○	○	○	○	○	○	○	○	○	

- TESTED AND APPROVED.
- NOT TESTED YET, BUT POSSIBLE TO TEST

Textile Category 1

BARNUM BOUCLE
by Audo



PRICE CATEGORY
1

MANUFACTURER
Audo

MATERIALS
45% Cotton
19% Viscose
15% Wool
13% PC
8% Polyester

MARTINDALE
60,000

LIGHTFASTNESS
5

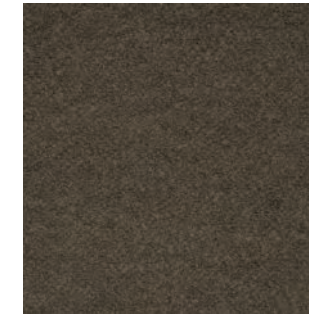
PILLING
4



04



05



10



11



19



21



24



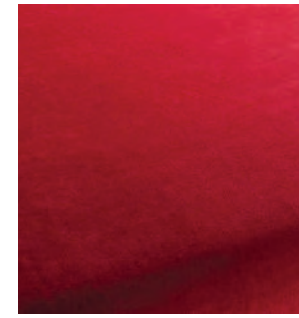
PRICE CATEGORY
1

MANUFACTURER
JAB

MATERIALS
100% Polyester

MARTINDALE
70.000

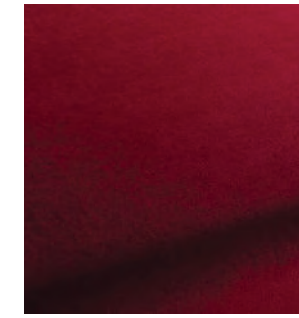
LIGHTFASTNESS
5



1-3114-010



1-3114-011



1-3114-012



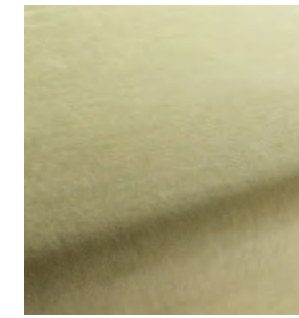
1-3114-020



1-3114-021



1-3114-022



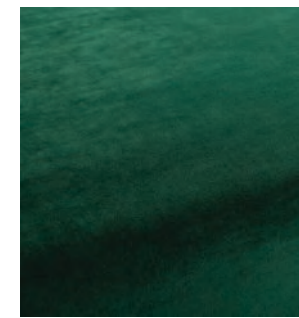
1-3114-030



1-3114-031



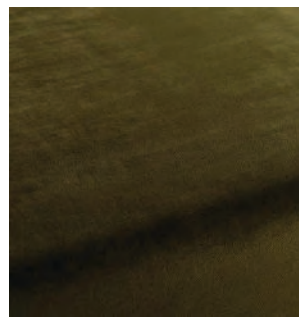
1-3114-032



1-3114-033



1-3114-034



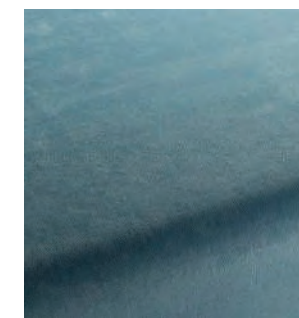
1-3114-035



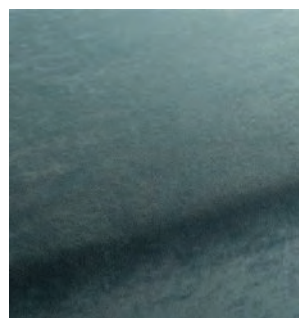
1-3114-040



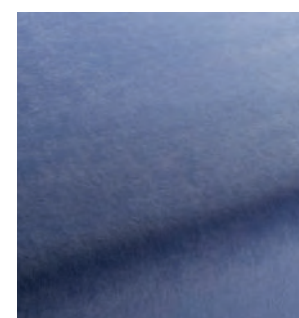
1-3114-041



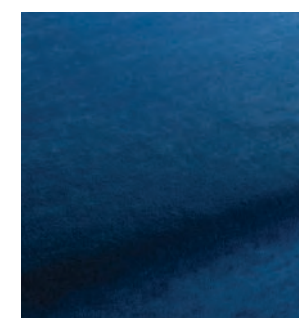
1-3114-050



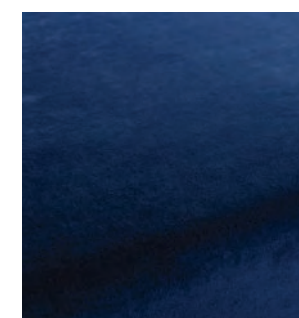
1-3114-051



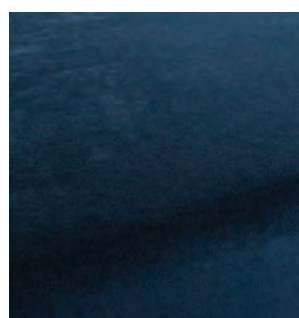
1-3114-052



1-3114-053



1-3114-054



1-3114-055



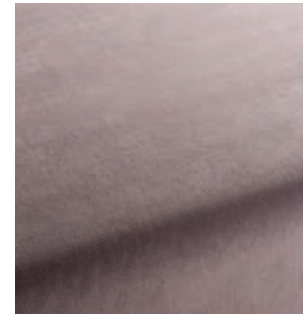
1-3114-060



1-3114-061



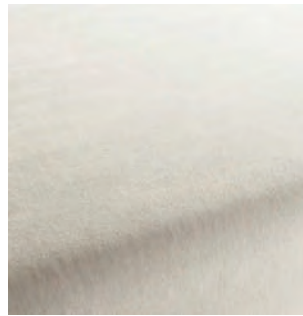
1-3114-062



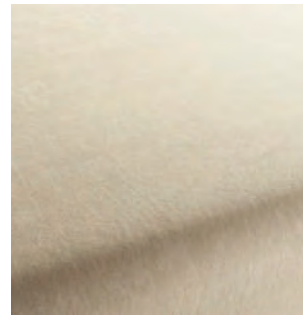
1-3114-063



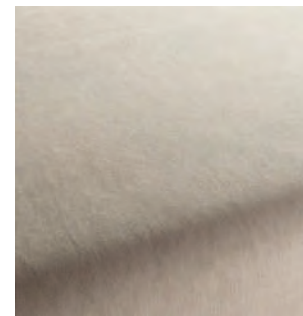
1-3114-064



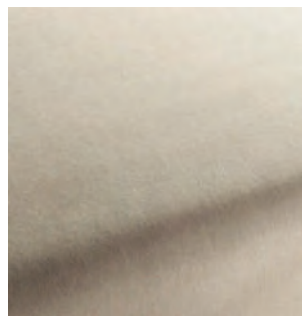
1-3114-070



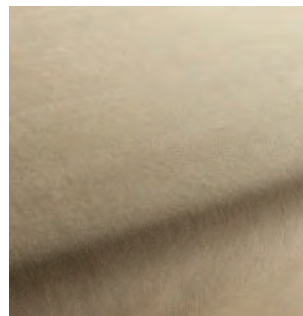
1-3114-071



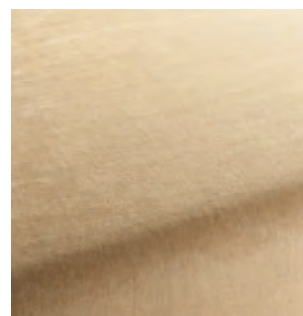
1-3114-072



1-3114-073



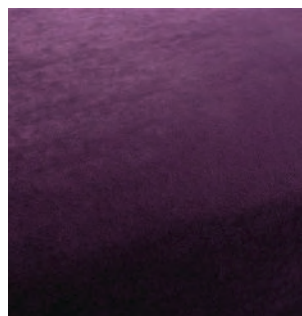
1-3114-074



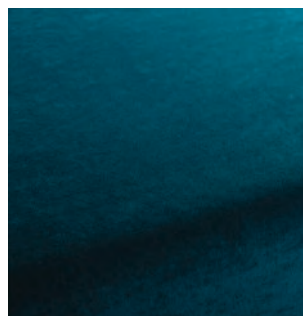
1-3114-075



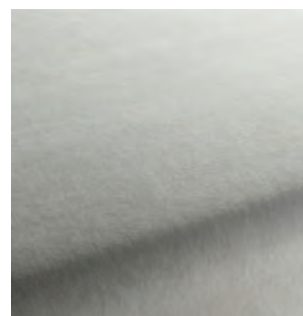
1-3114-080



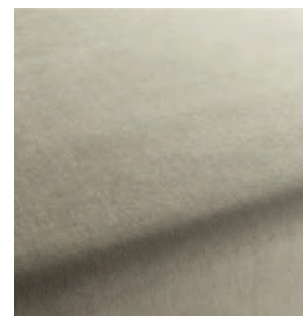
1-3114-081



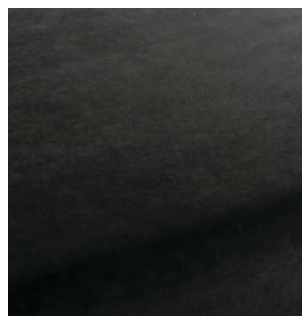
1-3114-082

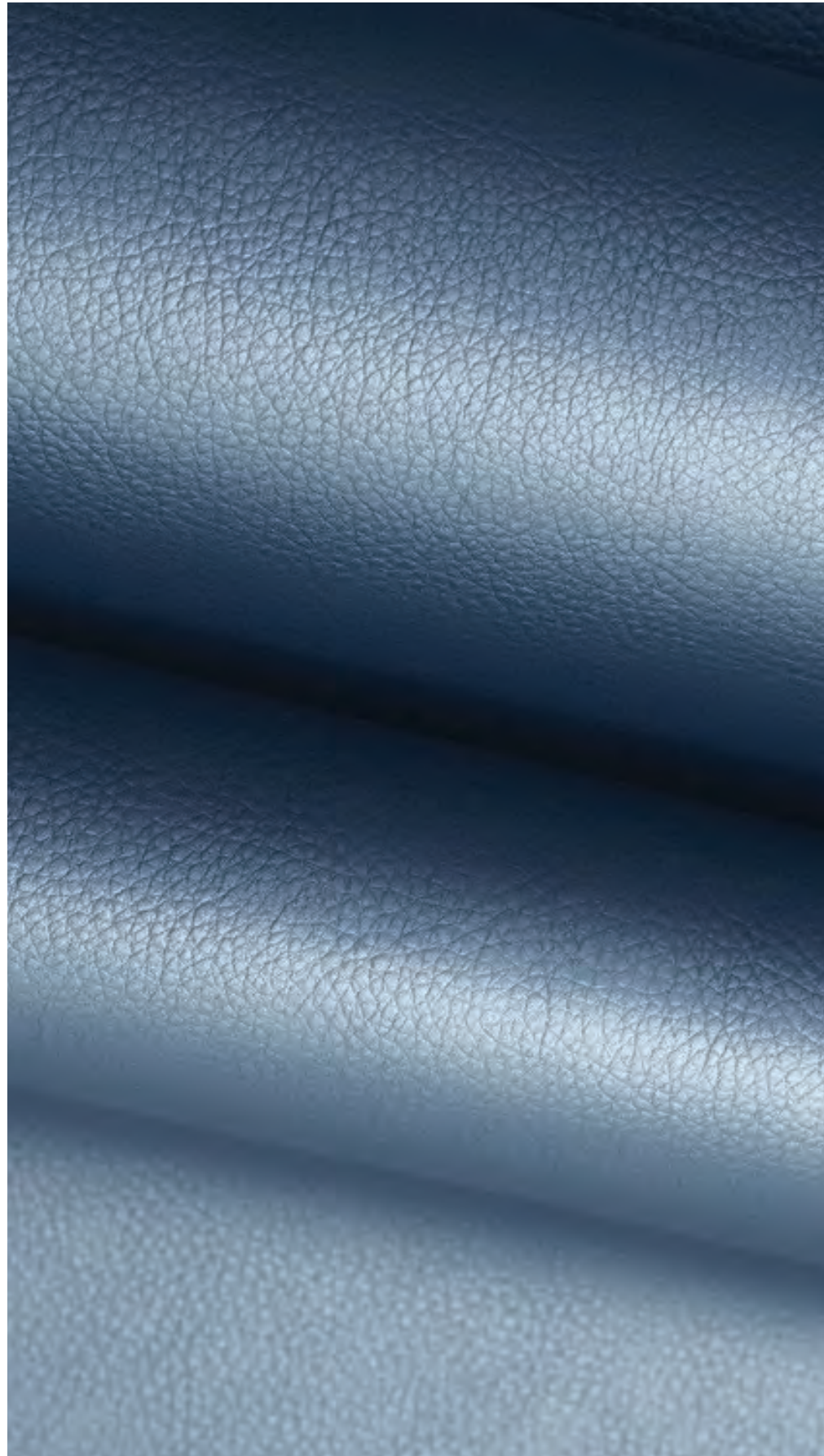


1-3114-091



1-3114-092



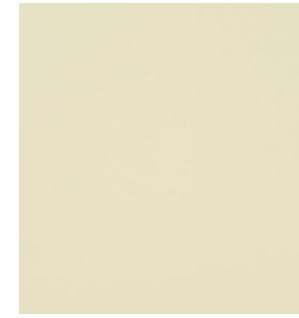


PRICE CATEGORY
1

MANUFACTURER
Nevotex

MATERIALS
Artificial leather

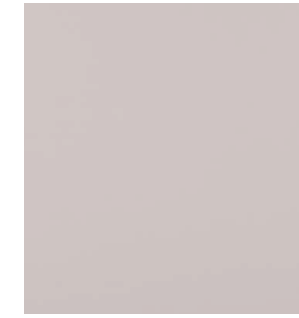
THICKNESS
1 mm



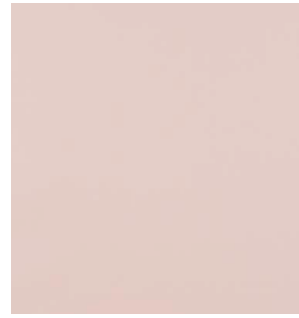
82417



93086



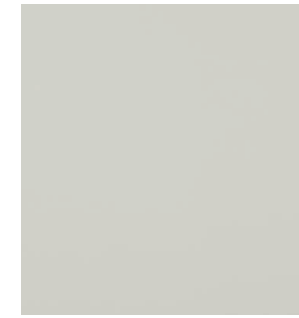
53593



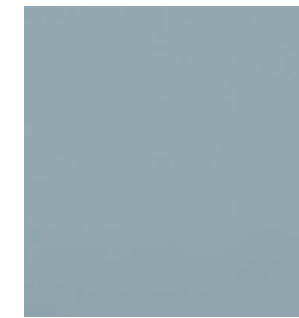
22427



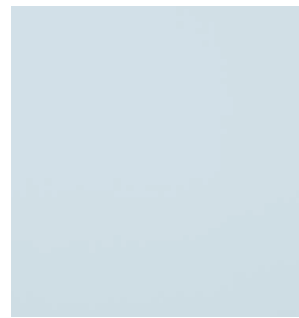
65072



72133



63174



61602



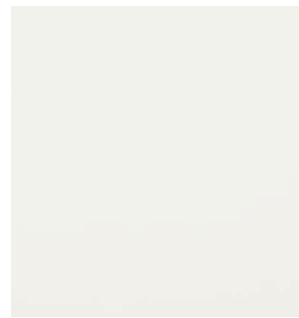
65307



74007



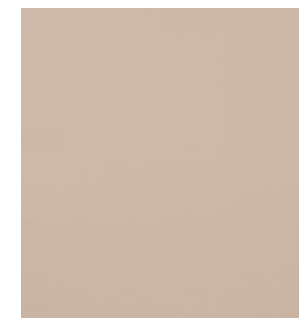
76236



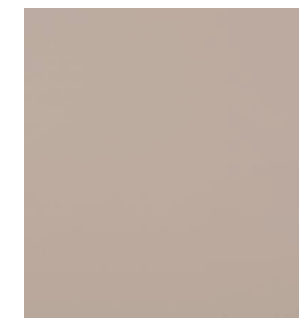
00800



84176



85352



87241



36519



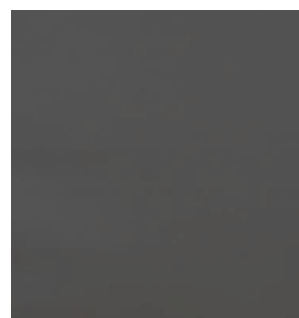
44184



24784



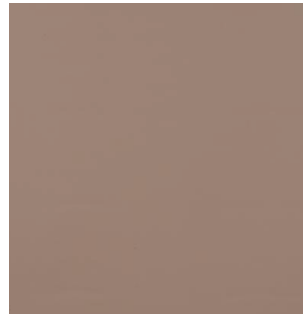
45633



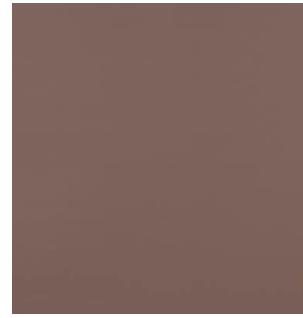
57841



48013



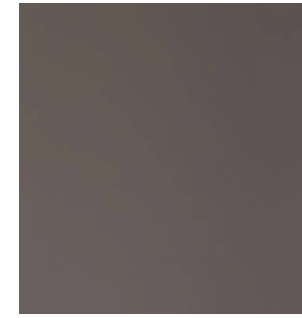
46508



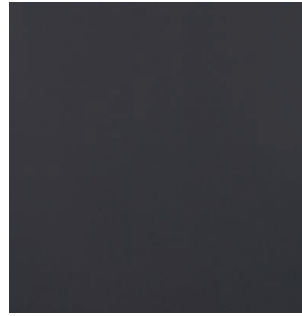
47124



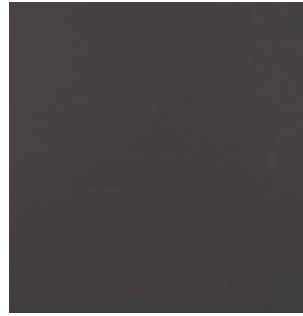
67403



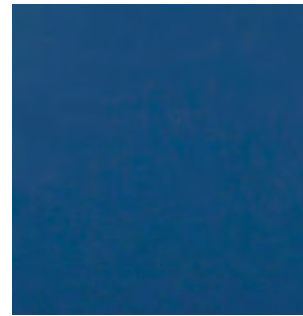
47069



68523



58290



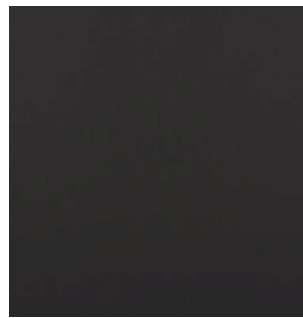
68746



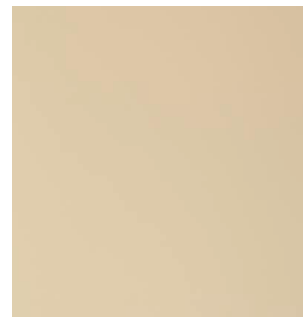
65066



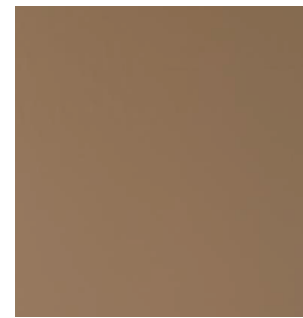
67382



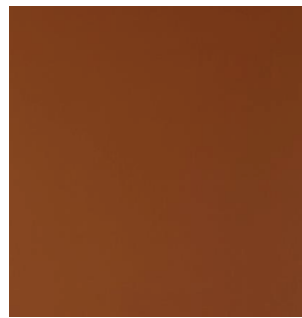
00110



83430



85020



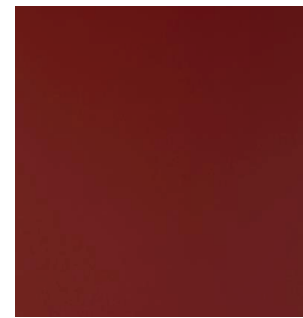
44388



36850



23660



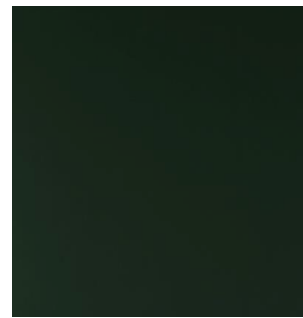
28040



75566



76725

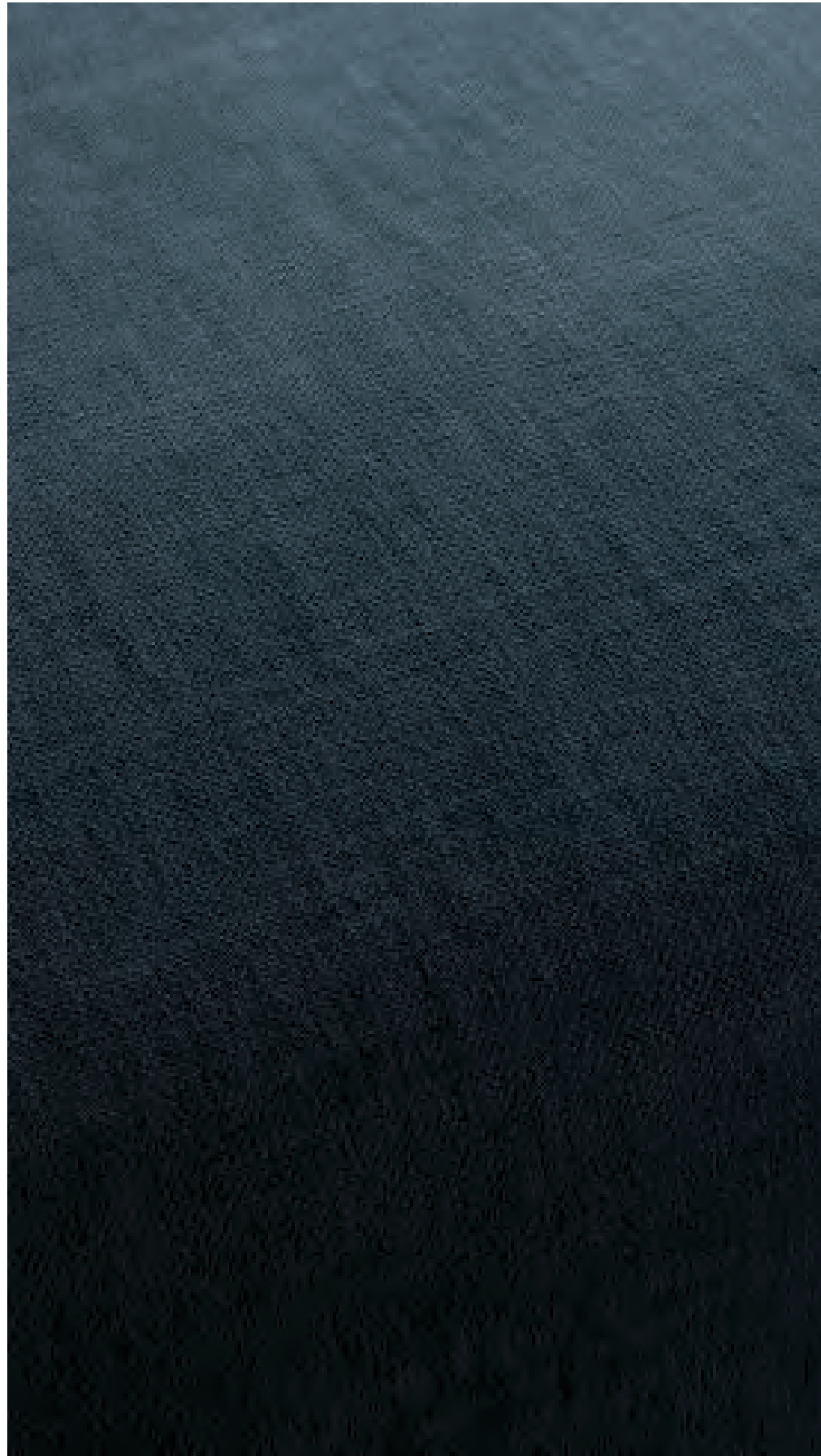


77773



66745

HOT MADISON FR
by JAB



PRICE CATEGORY
1

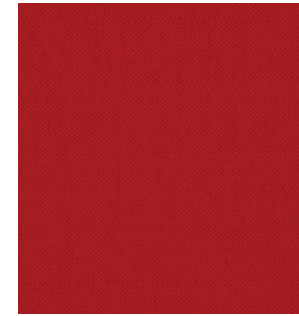
MANUFACTURER
JAB

MATERIALS
63% Cotton
37% Linen

MARTINDALE
35.000

LIGHTFASTNESS
4-5

PILLING
4



CH3099-013



CH3099-020



CH3099-023



CH3099-053



CH3099-070



CH3099-072



CH3099-073



CH3099-074



CH3099-077



CH3099-089



CH3099-093



CH3099-094



CH3099-095



CH3099-097



CH3099-130



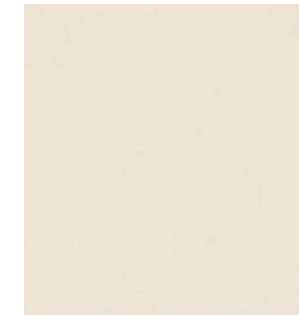
CH3099-133



CH3099-155



CH3099-171



CH3099-172



CH3099-180



CH3099-185



CH3099-192



CH3099-194



CH3099-195



CH3099-714



CH3099-716



CH3099-720



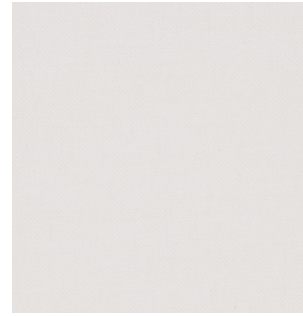
CH3099-722



CH3099-203



CH3099-419



CH3099-420



CH3099-424



CH3099-724



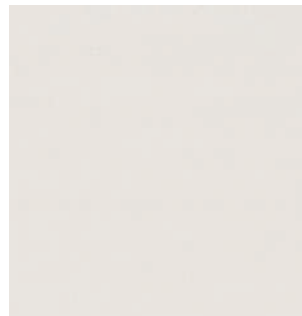
CH3099-726



CH3099-727



CH3099-884



CH3099-478



CH3099-499



CH3099-503



CH3099-521



CH3099-903



CH3099-934



CH3099-936



CH3099-988



CH3099-562



563-097



CH3099-565



CH3099-567



CH3099-995



CH3099-568



CH3099-569



CH3099-695



CH3099-706



PRICE CATEGORY
1

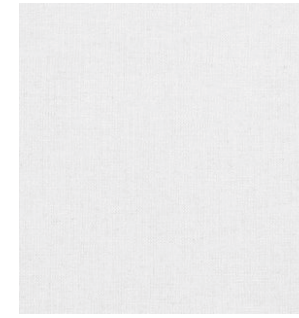
MANUFACTURER
Kvadrat

MATERIALS
81% Viscose
15% Linen
4% Non-woven Polyester
backing

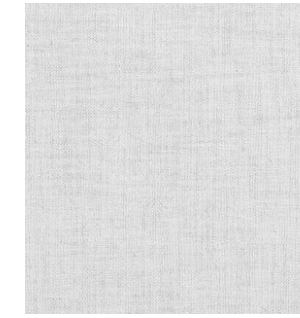
MARTINDALE
30.000

LIGHTFASTNESS
5-7

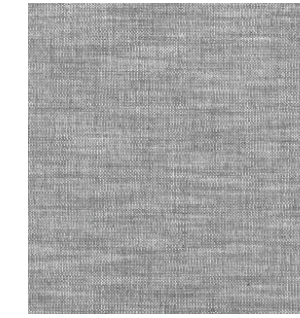
PILLING
5



0102



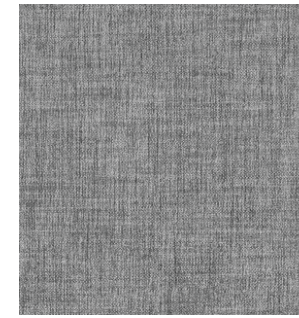
0112



0132



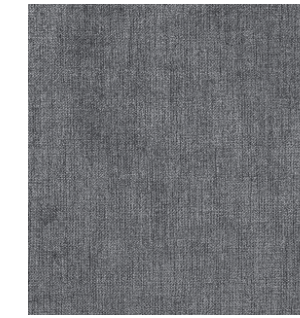
0142



0162



0172



0192



0202



0212



0222



0232



0332



0342



0352



0362



0392



0542



0562



0662



0722



0732



0742



0762



0792



0832



0862



PRICE CATEGORY
1

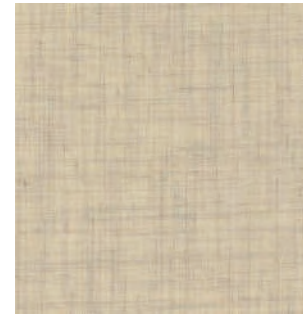
MANUFACTURER
Kvadrat

MATERIALS
90% New wool
10% Nylon

MARTINDALE
100.000

LIGHTFASTNESS
5-7

PILLING
4



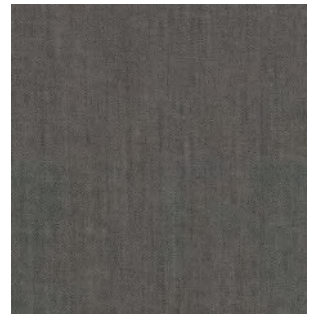
0113



0123



0126



0133



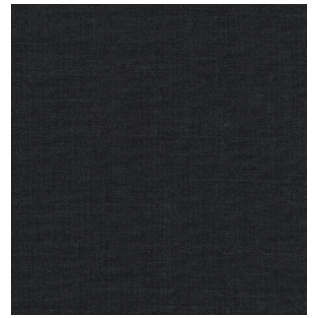
0136



0143



0152



0173



0183



0196



0223



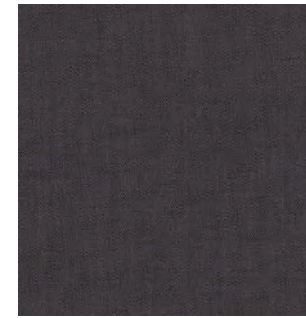
0233



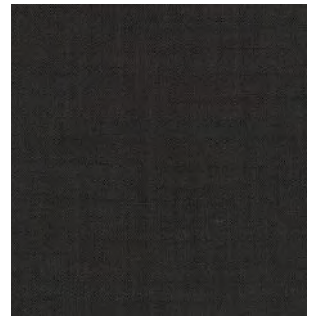
0242



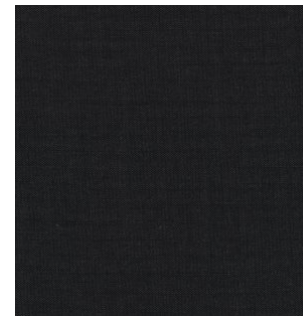
0252



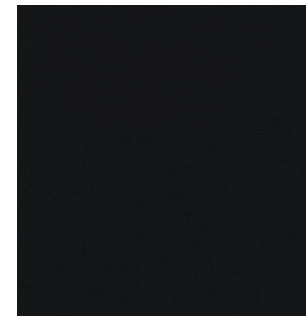
276



0266



0276



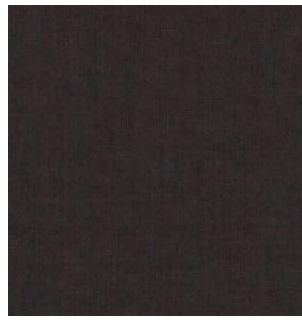
0296



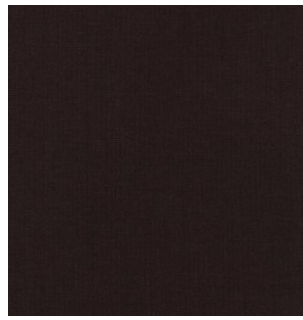
0326



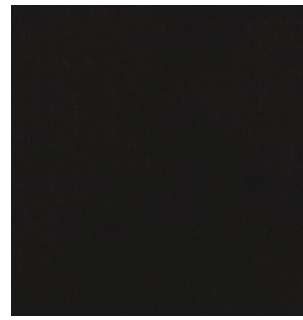
0346



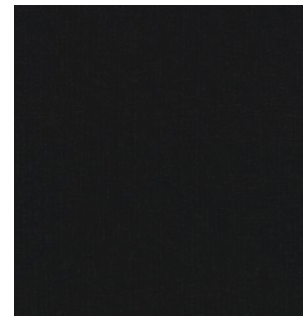
0356



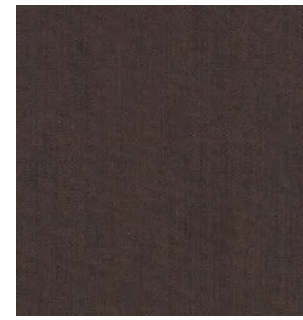
0362



0373



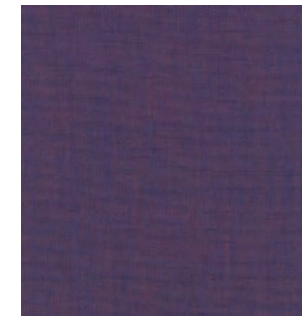
0383



0672



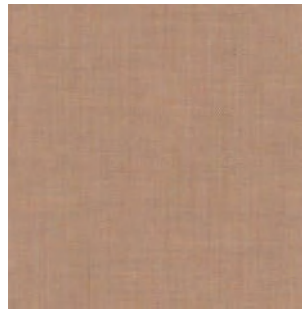
0682



0686



0692



0406



0412



0422



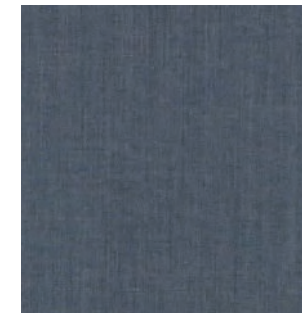
0433



0716



0722



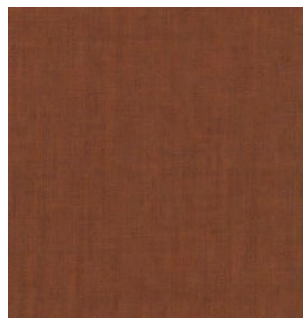
0733



0743



0443



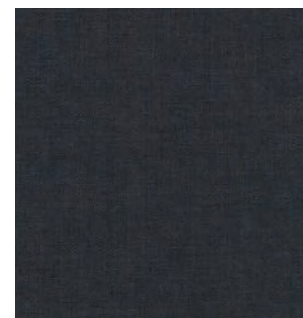
0452



0516



0536



0753



0762



0773



0783



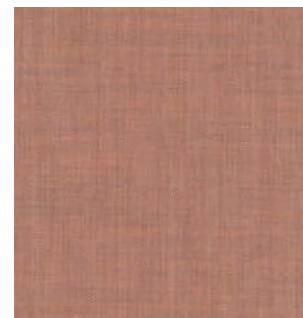
0543



0566



0606



0612



0796



0816



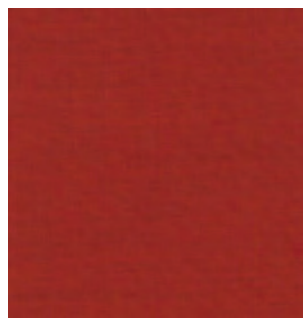
0823



0836



0632



0643



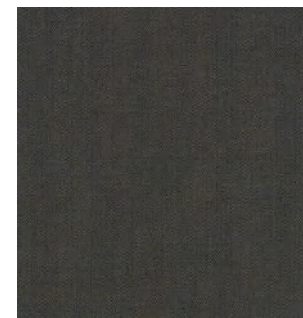
0653



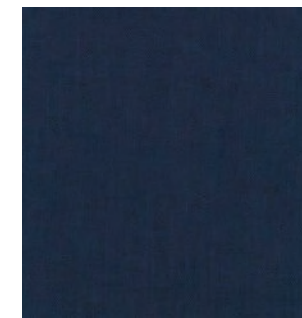
0662



0842



0852



0866



0873



0906



0912



0923



0933



0942



0954



0962



0973



0982



0996



PRICE CATEGORY
1

MANUFACTURER
Kvadrat

MATERIALS
45% new wool worsted
45% recycled wool
10% nylon

MARTINDALE
100.000

LIGHTFASTNESS
5-7 (ISO 1-8)

PILLING
4 (ISO 1-5)



0108



0128



0158



0198



0218



0358



0378



0408



0448



0458



0558



0568



0628



0648



0658



0718



0758



0768



0828



0858



0868

Textile Category 2



PRICE CATEGORY
2

MANUFACTURER
Kvadrat

MATERIALS
90% New wool
10% Nylon

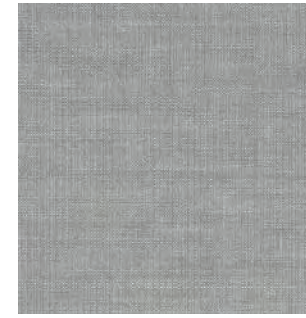
MARTINDALE
100.000

LIGHTFASTNESS
5-7

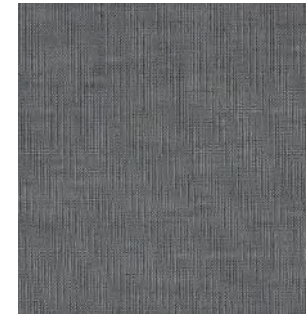
PILLING
4-5



114



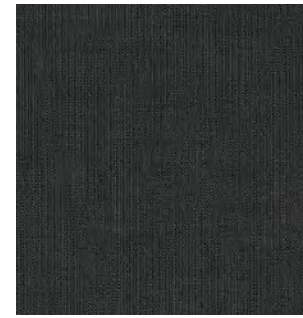
124



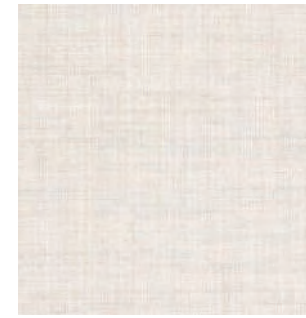
134



154



174



216



224



244



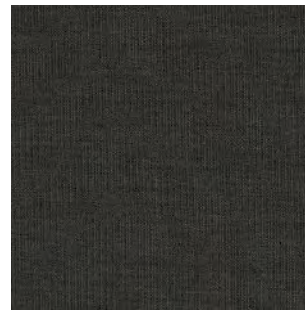
254



264



356



364



374



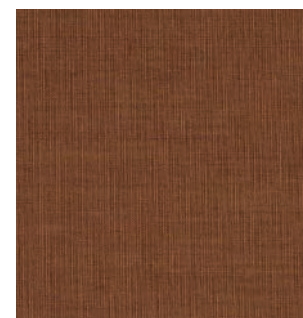
414



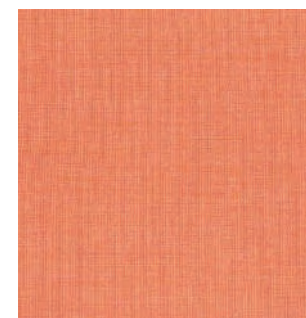
424



446



454



546



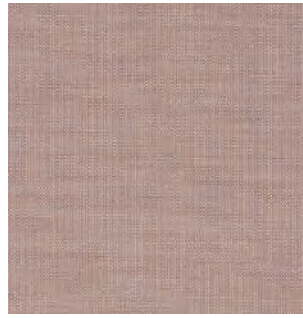
556



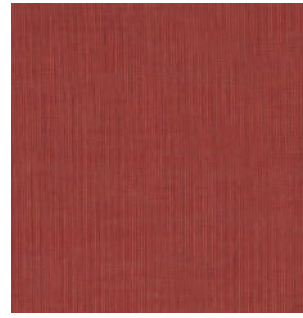
566



576



614



644



654



954



964



974



984



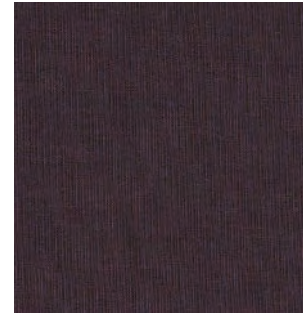
666



674



684



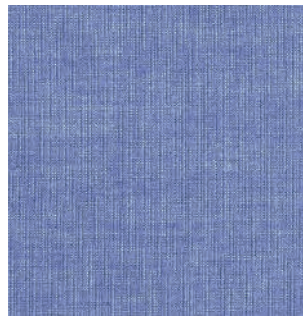
694



996



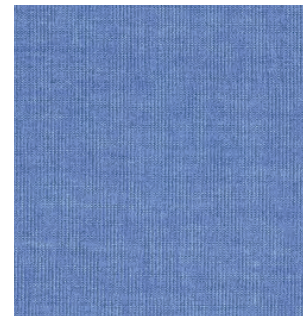
716



726



734



746



764



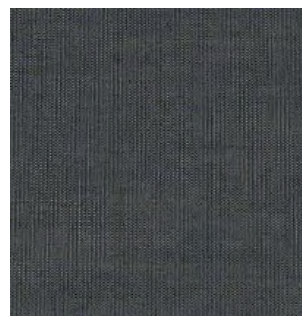
786



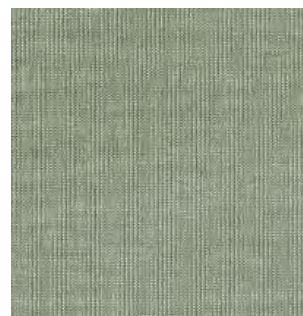
794



836



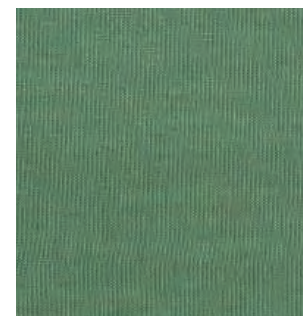
854



926



936



946



PRICE CATEGORY
2

MANUFACTURER
Sahco

MATERIALS
76% Linen
21% Cotton
3% Polyester

MARTINDALE
45.000

LIGHTFASTNESS
4-6

PILLING
4



0001



0002



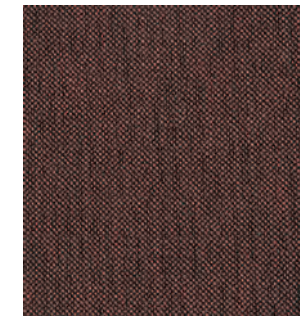
0003



0004



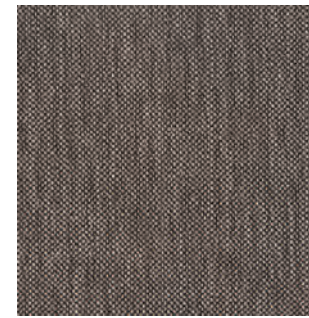
0005



0006



0007



0008



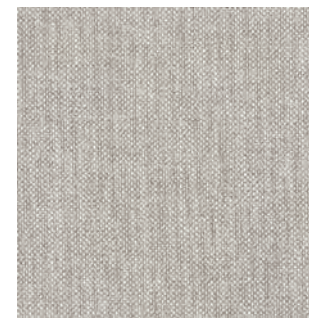
0009



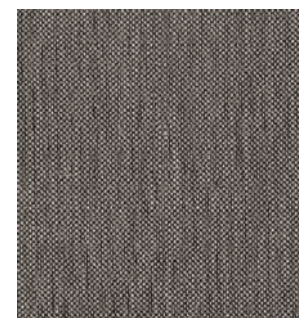
0010



0011



0012



0013



0014



0015



0016



0017



PRICE CATEGORY
2

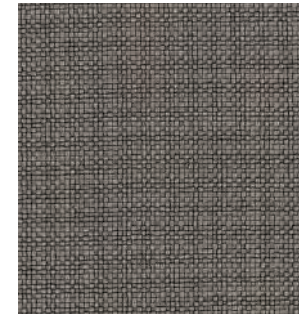
MANUFACTURER
Kvadrat

MATERIALS
75% Wool
17% Acrylic
8% Nylon

MARTINDALE
100.000

LIGHTFASTNESS
6

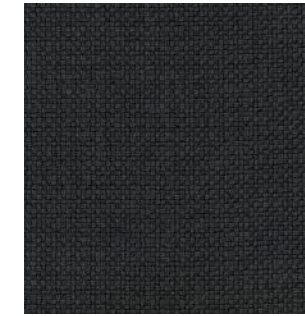
PILLING
4-5



0127



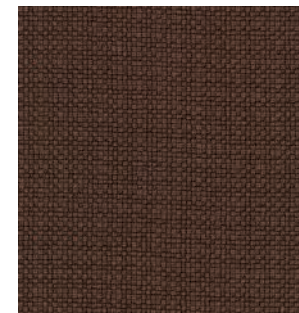
0147



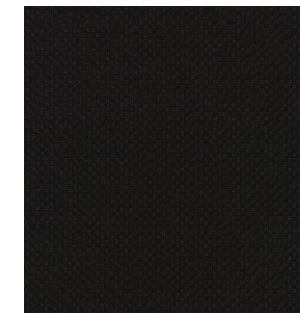
0177



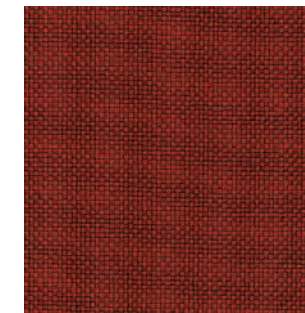
0227



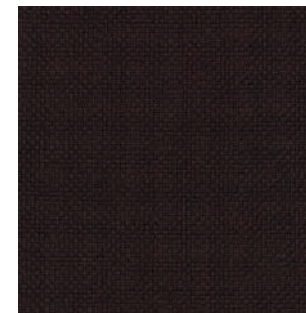
0347



0397



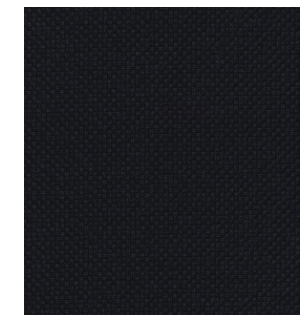
0657



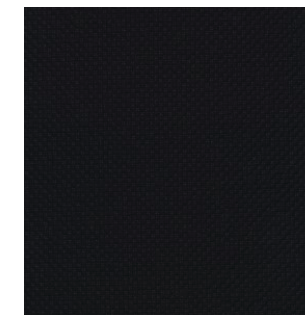
0677



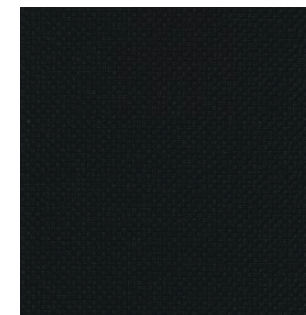
0737



0787



0797



0987



PRICE CATEGORY
2

MANUFACTURER
Kvadrat

MATERIALS
92% New wool
8% Nylon

MARTINDALE
60.000

LIGHTFASTNESS
6

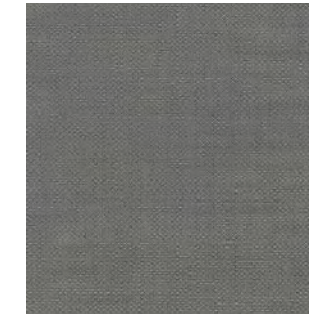
PILLING
4-5



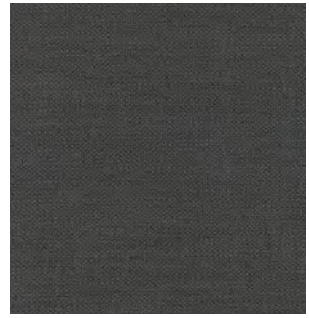
101



121



151



171



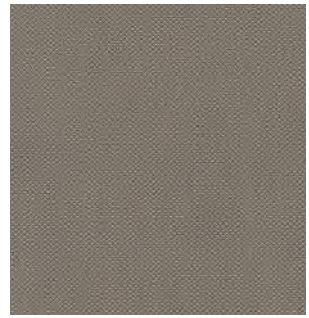
191



201



251



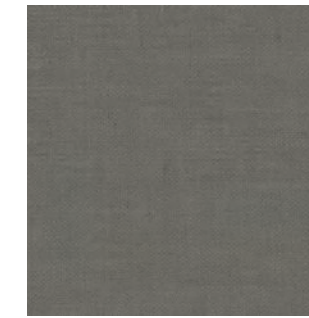
262



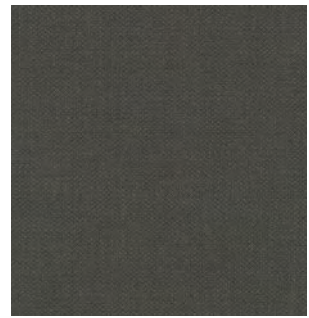
271



322



351



371



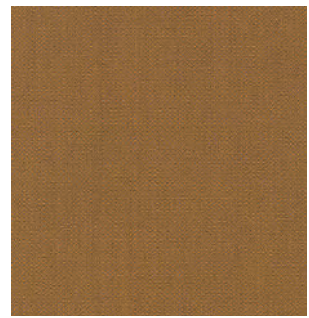
382



391



422



442



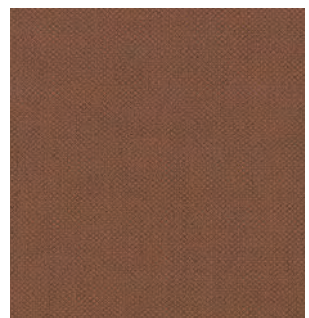
451



521



551



562



571



581



591



642



672



721



751



762



771



782



791



821



862



951



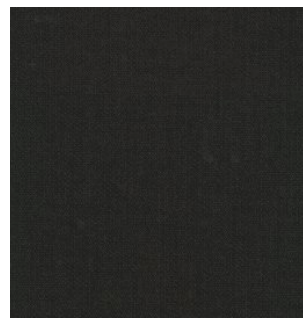
961



971

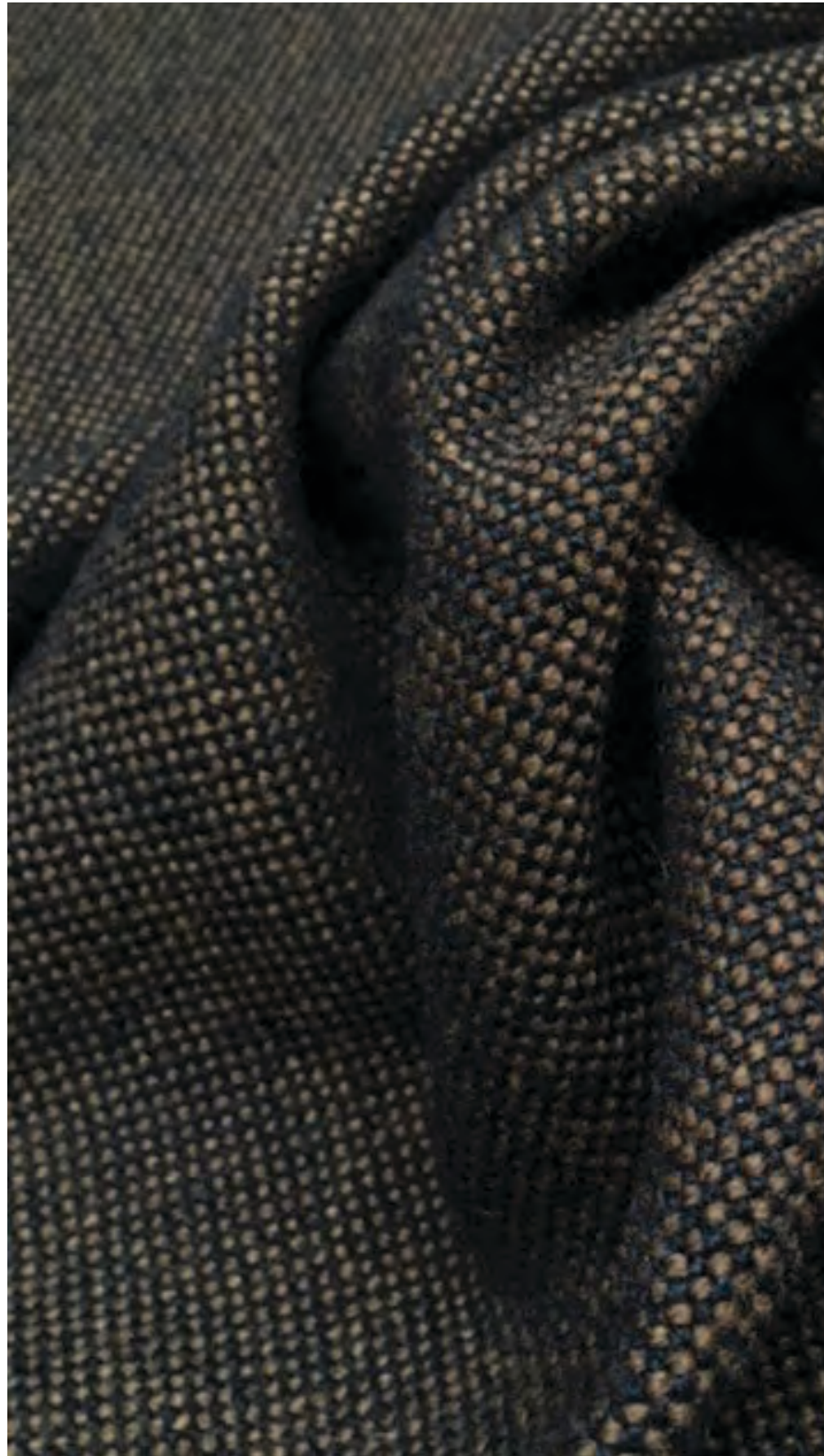


981



991

HALLINGDAL 65
by Kvadrat



PRICE CATEGORY
2

MANUFACTURER
Kvadrat

MATERIALS
70% New wool
30% Viscose

MARTINDALE
100.000

LIGHTFASTNESS
5-7

PILLING
3-4



0100



0103



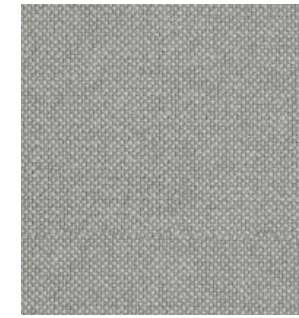
0110



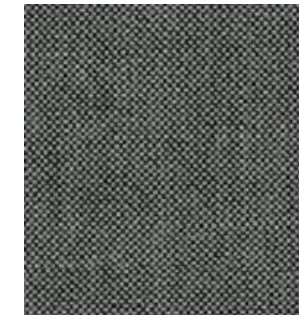
0113



0116



0123



0126



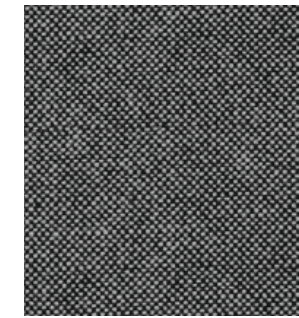
0130



0143



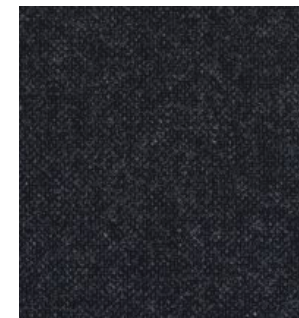
0153



0166



0173



0180



0190



0200



0220



0224



0227



0270



0350



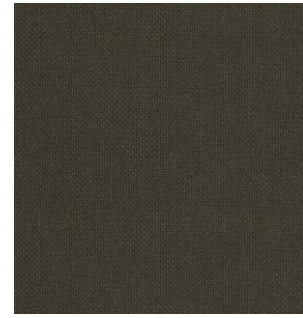
0368



0370



0376



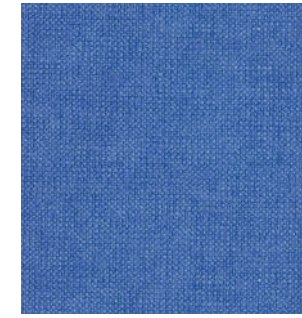
0390



0702



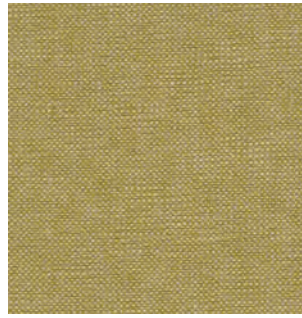
0723



0733



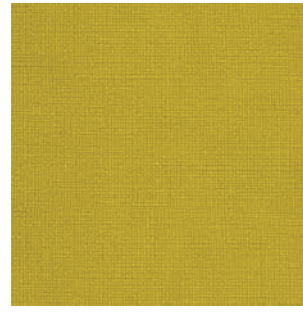
0750



0407



0420



0457



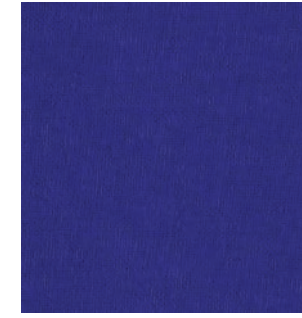
0526



0753



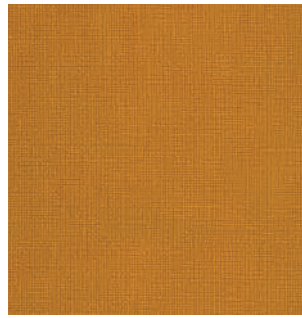
0754



0763



0764



0547



0563



0573



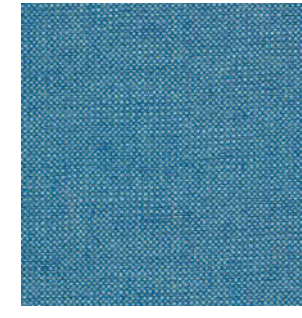
0590



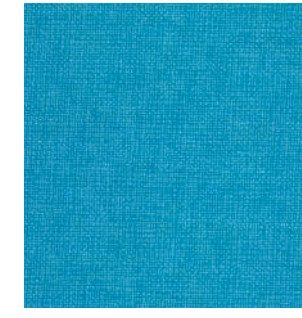
0773



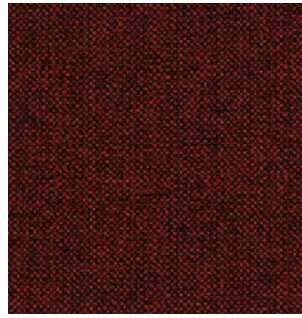
0810



0840



0850



0596



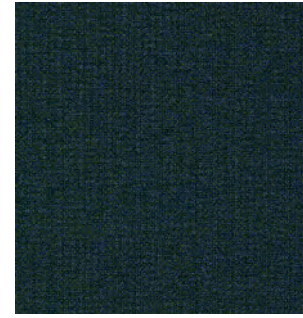
0600



0657



0660



0890



0907



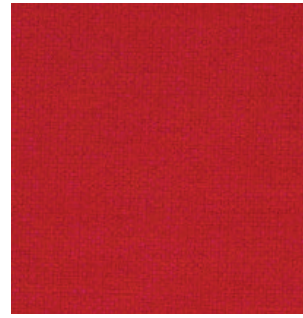
0944



0960



0674



0680



0687



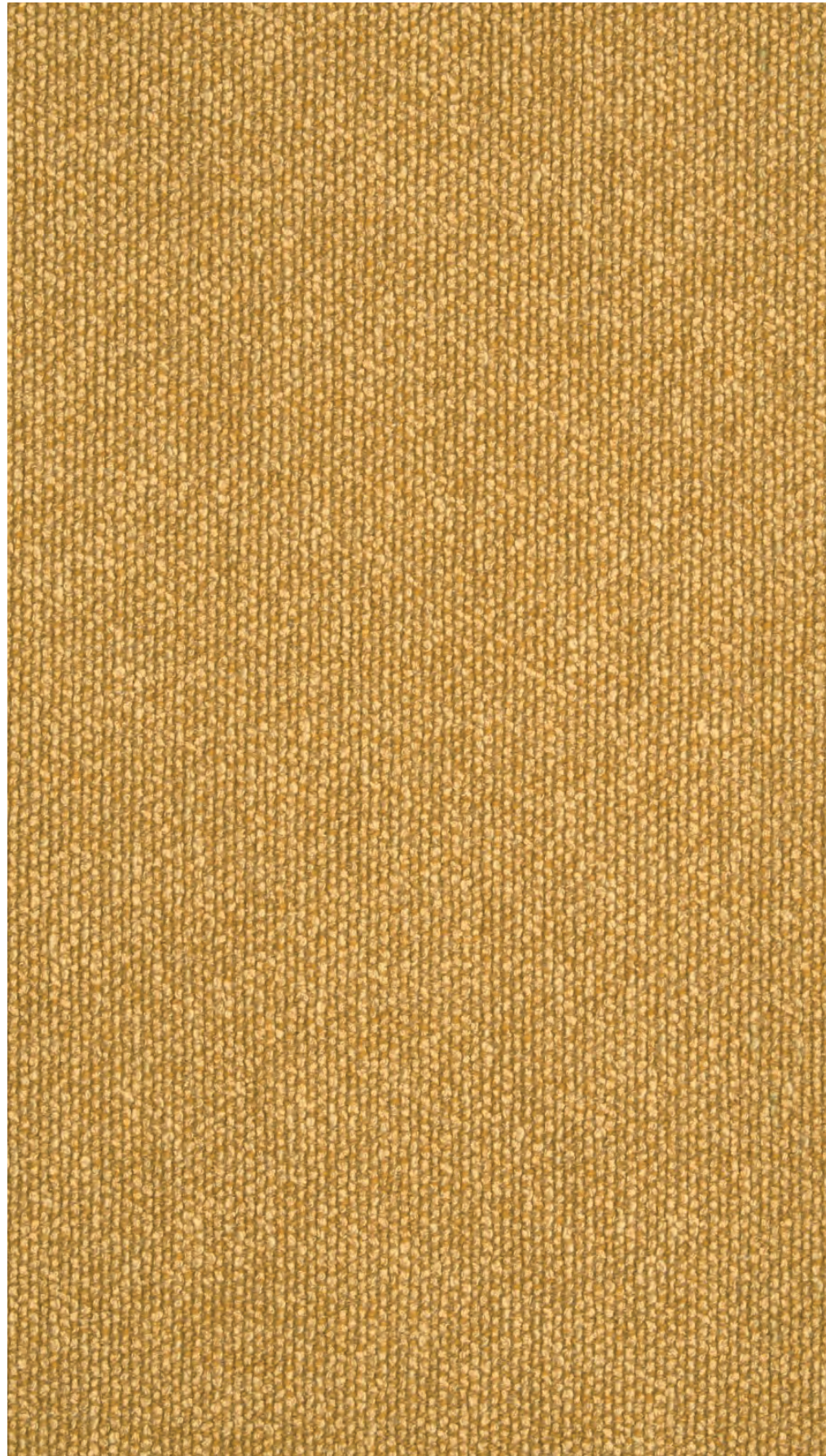
0694



0968



0980



PRICE CATEGORY
2

MANUFACTURER
Sahco

MATERIALS
52% Cotton
22% Viscose,
14% Acrylic
6% Linen
3% Polyester
3% Nylon

MARTINDALE
45.000

LIGHTFASTNESS
6-7

PILLING
4-5



0001



0002



0003



0004



0005



0006



0007



0008



0009



0010



0011



0012



0013



0014



0015



0016



0017



0018



0019



0020

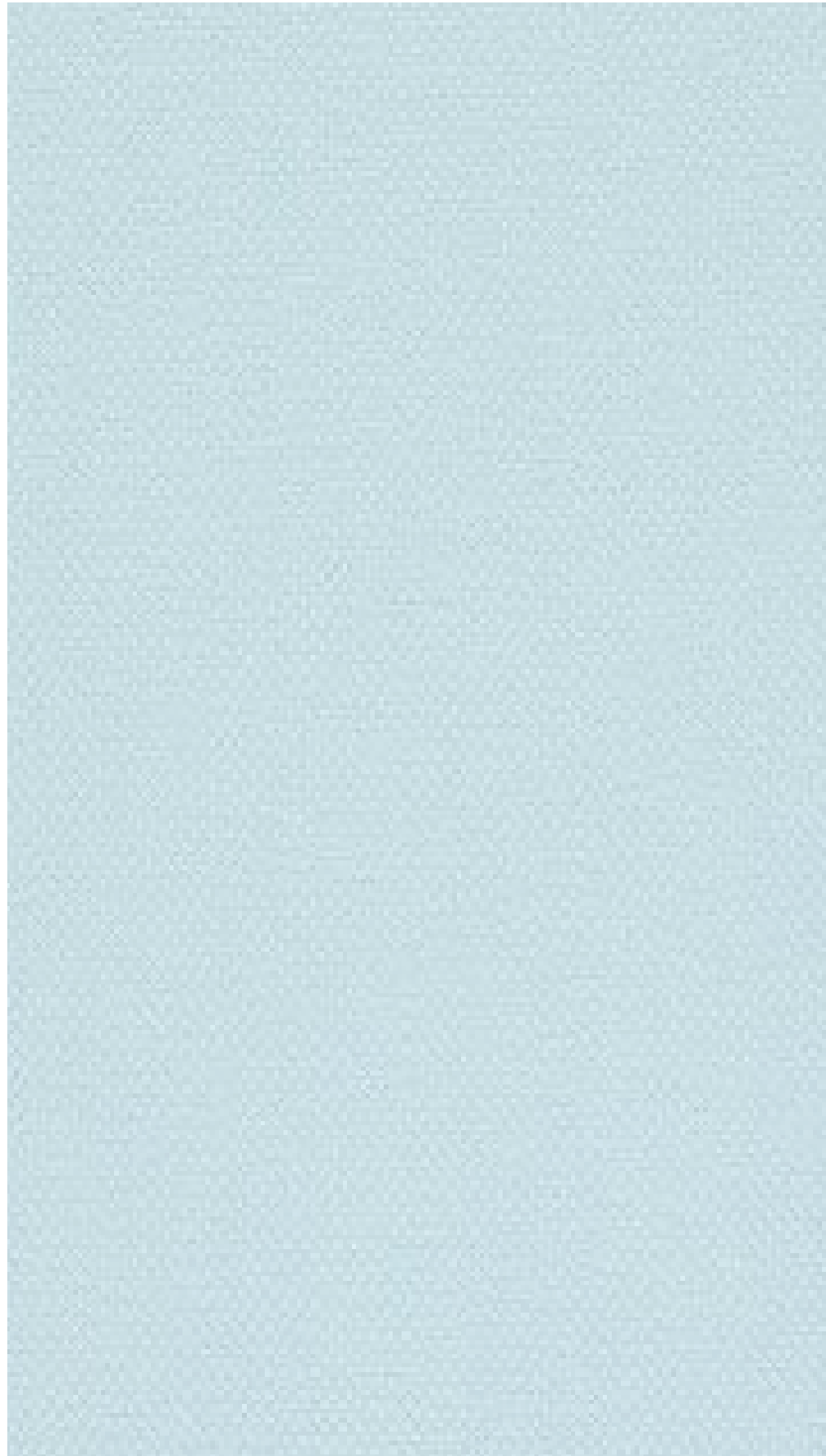


0021



0022

STEELCUT 2
by Kvadrat



PRICE CATEGORY
2

MANUFACTURER
Kvadrat

MATERIALS
90% New wool
10% Nylon

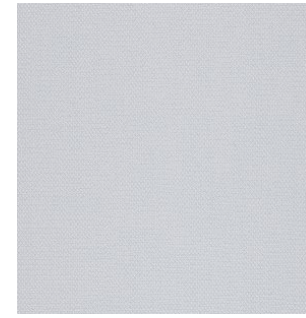
MARTINDALE
100.000

LIGHTFASTNESS
5-7

PILLING
3-4



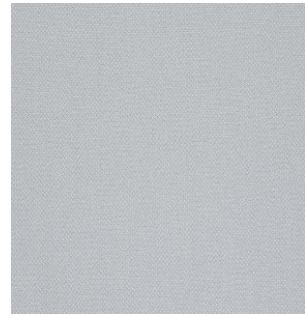
110



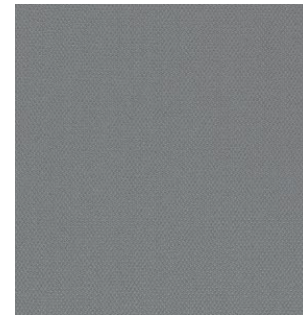
120



135



140



155



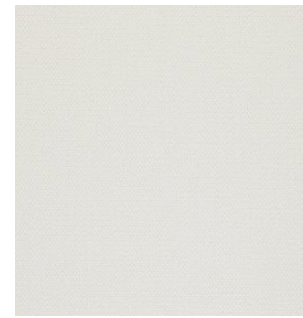
160



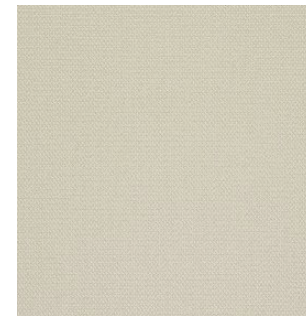
180



190



220



240



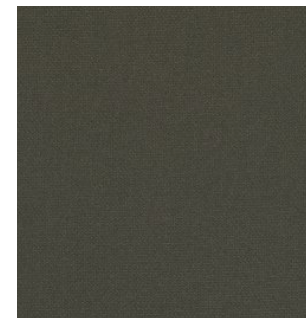
255



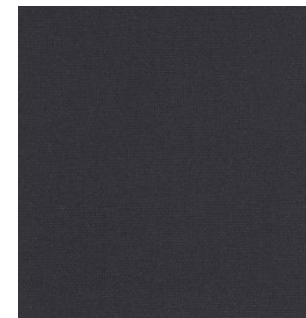
265



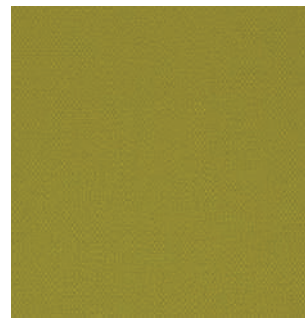
365



370



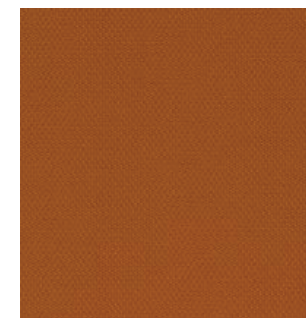
380



435



445



535



545



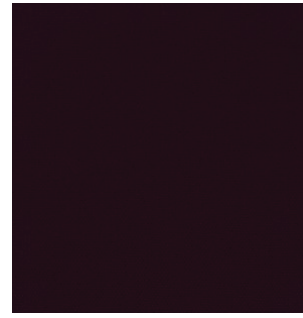
550



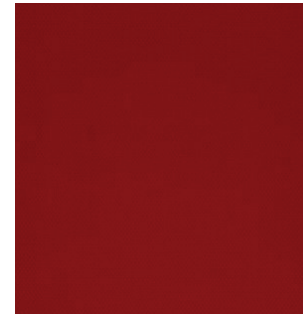
605



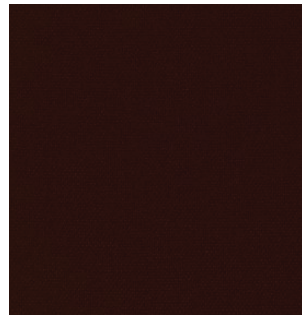
615



625



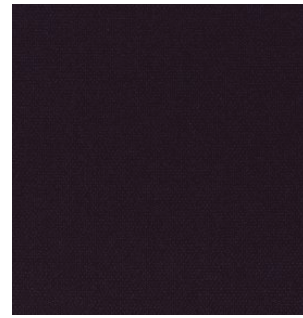
635



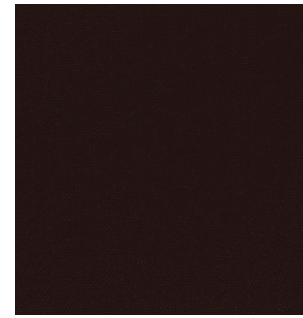
655



660



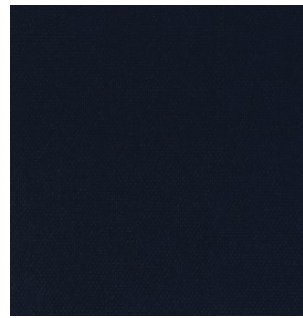
685



695



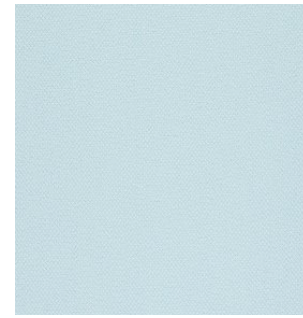
760



775



780



820



835



935



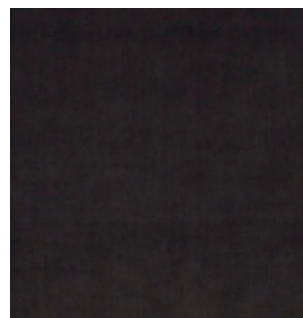
950



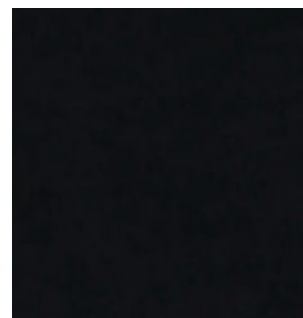
975



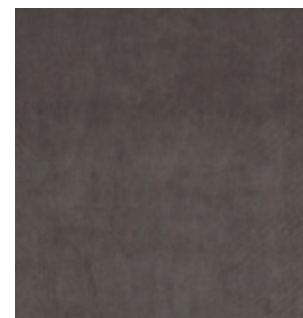
985



1122

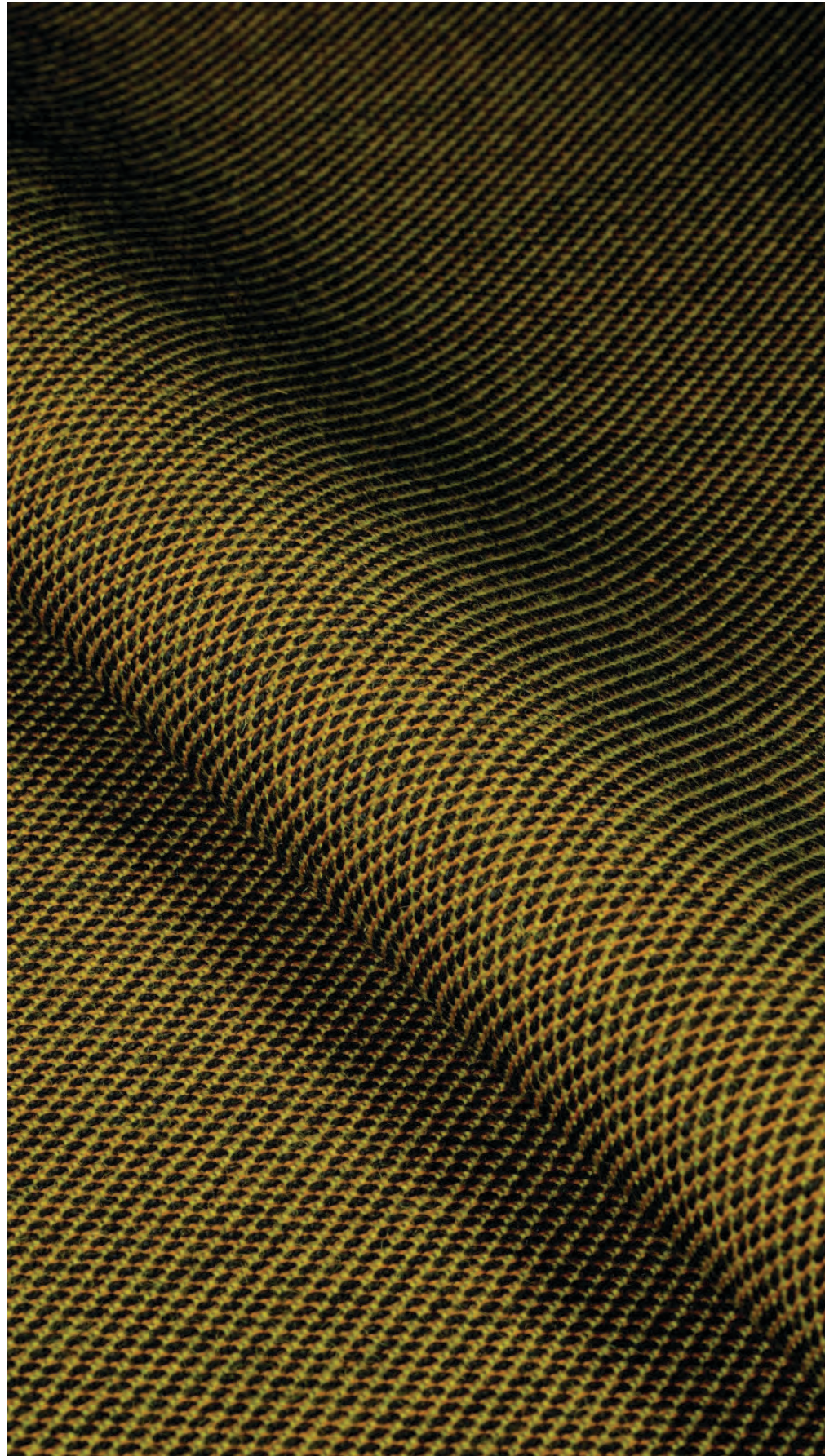


0917



1362

STEELCUT TRIO 3
by Kvadrat



PRICE CATEGORY
2

MANUFACTURER
Kvadrat

MATERIALS
90% New wool
10% Nylon

MARTINDALE
100.000

LIGHTFASTNESS
5-7

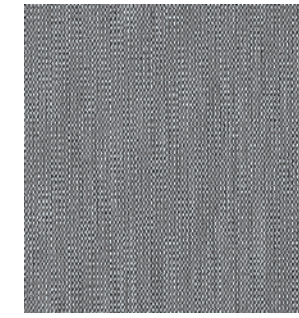
PILLING
4



105



113



124



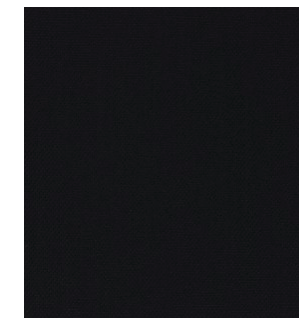
133



153



176



195



205



213



226



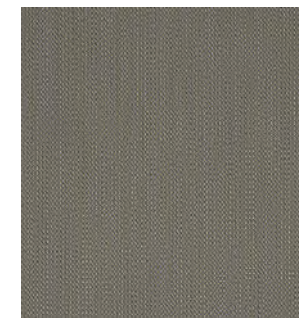
236



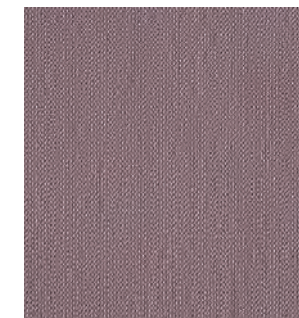
246



253



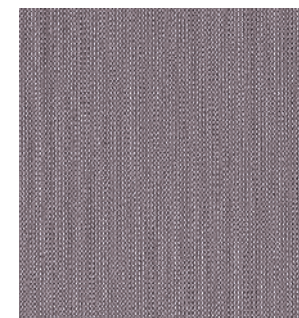
266



276



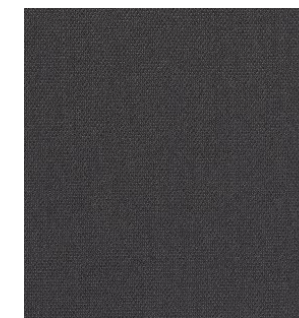
283



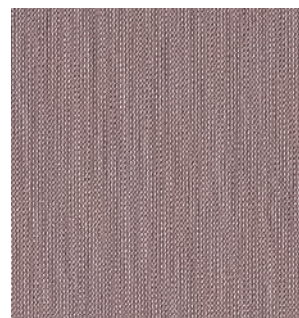
336



376



383



416



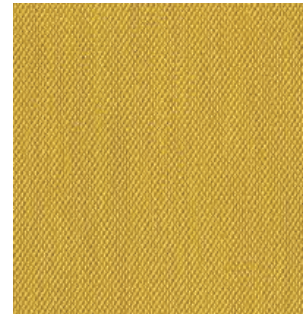
426



436



446



453



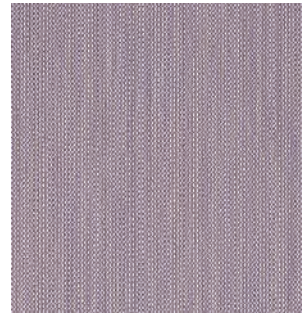
756



776



796



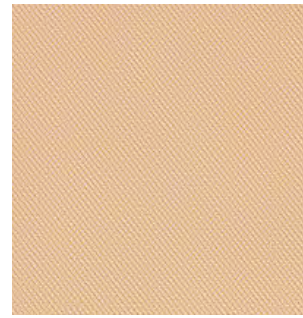
806



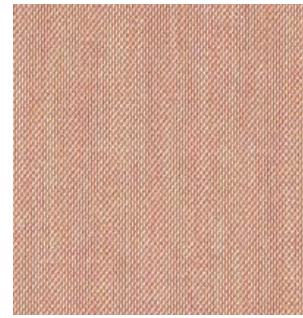
466



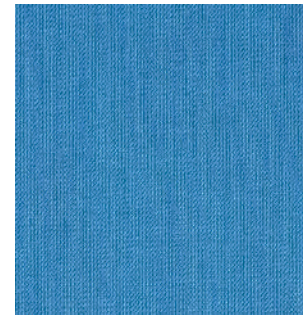
476



506



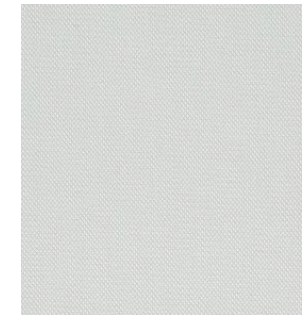
515



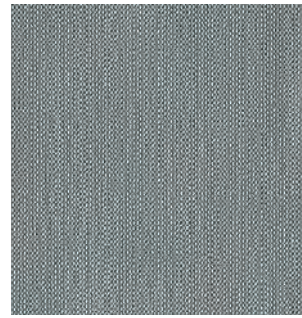
865



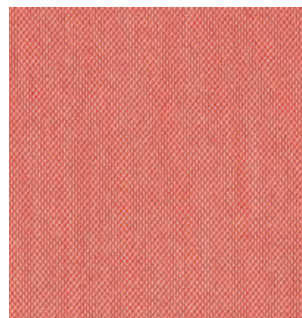
883



906



916



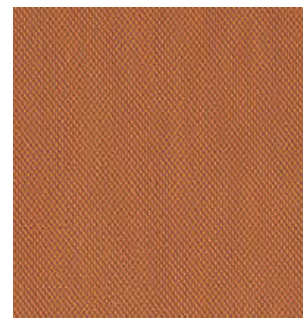
526



533



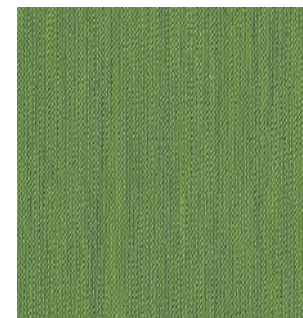
553



576



946



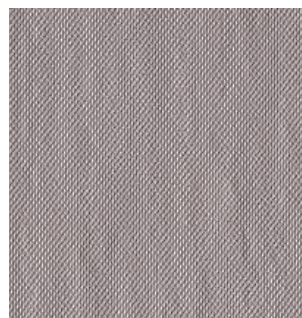
953



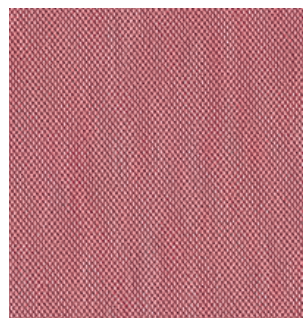
966



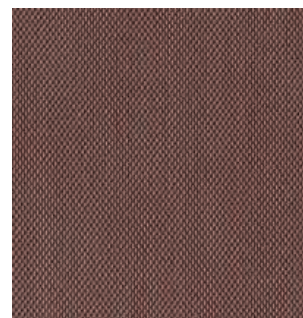
976



616



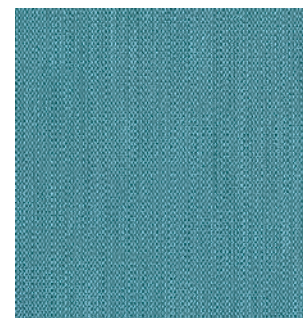
636



645



666



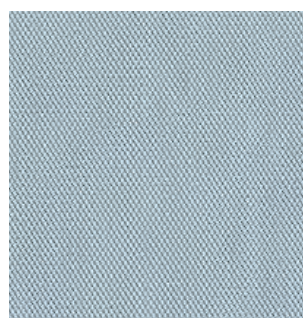
983



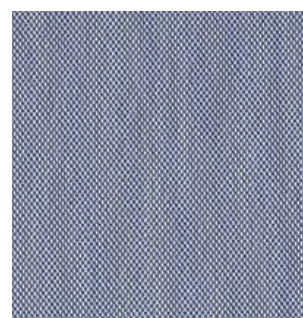
996



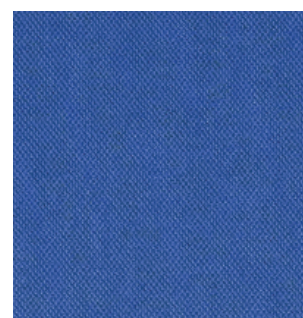
686



713

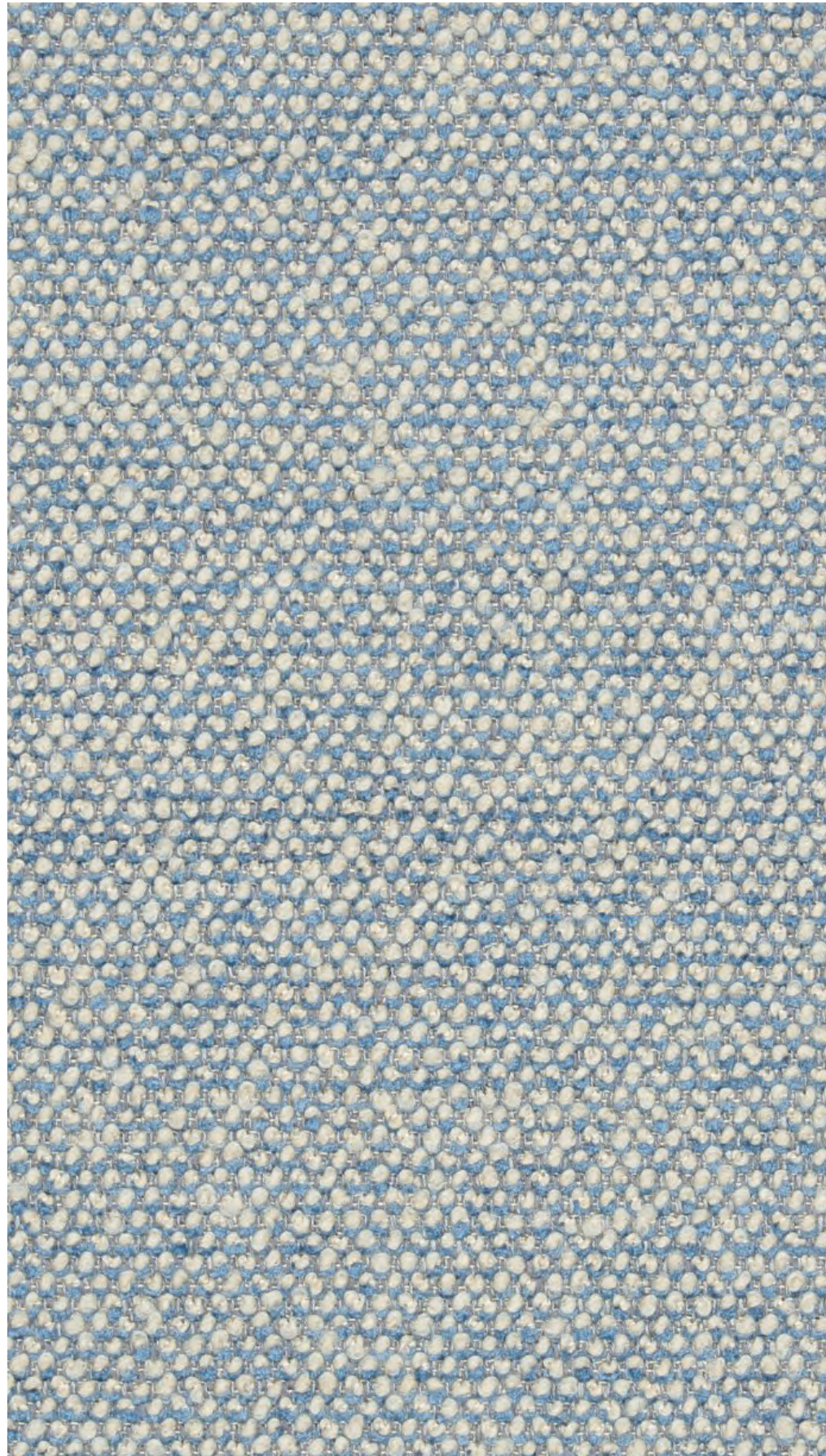


716



746

Textile Category 3



PRICE CATEGORY
3

MANUFACTURER
Sahco

MATERIALS
43% Viscose
17% Polyacrylic
15% New wool
9% Cotton
8% Linen
8% Polyester

MARTINDALE
40.000

LIGHTFASTNESS
6

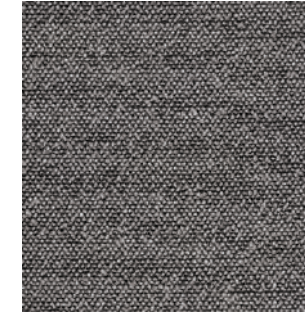
PILLING
3



001



002



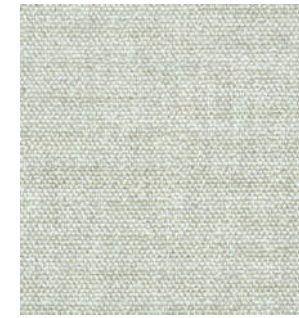
003



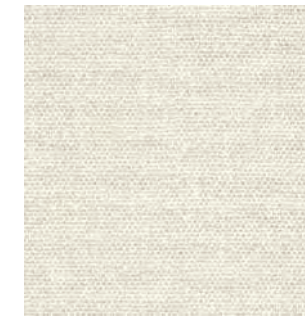
004



005



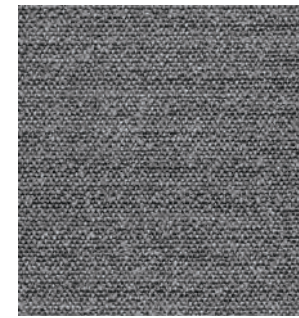
006



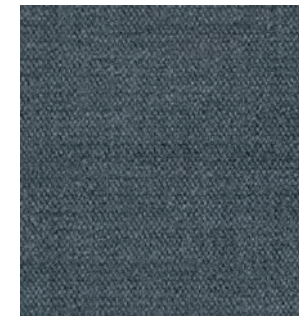
007



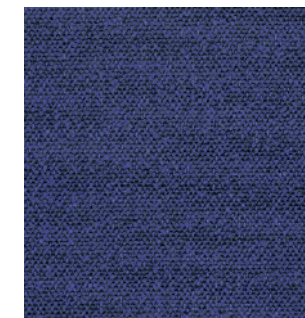
008



009



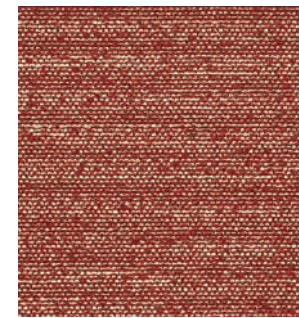
010



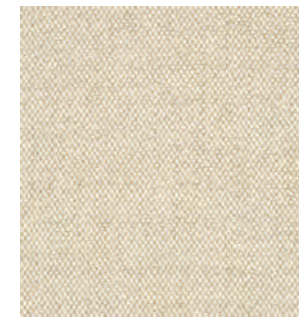
011



012



013



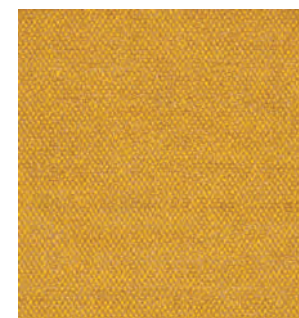
014



015



016



017

VIDAR 4
by Kvadrat



PRICE CATEGORY
3

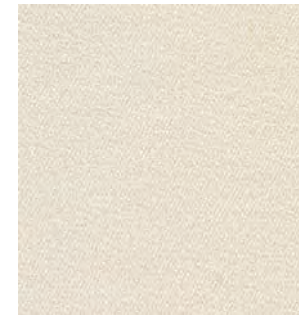
MANUFACTURER
Kvadrat

MATERIALS
94% New wool
6% Nylon

MARTINDALE
100.000

LIGHTFASTNESS
7 (ISO 1-8)

PILLING
4 (ISO 1-5)



0106



0123



0133



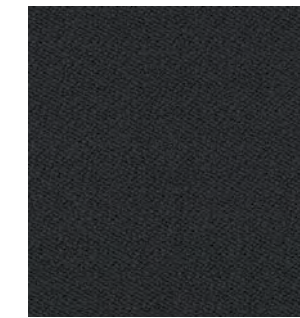
0143



0146



0152



0182



0222



0323



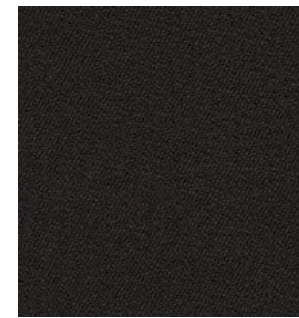
0333



0353



0363



0386



0443



0456



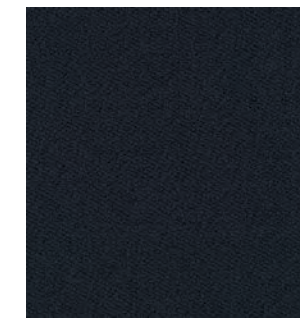
0472



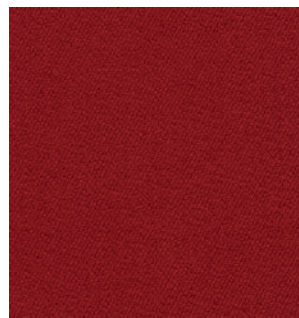
0526



0542



0554



0556



0582



0622



0633



0653



1880



0656



0676



0693



0723



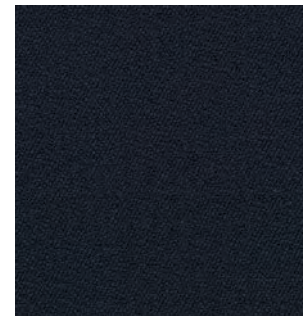
0733



0743



0772



0786



0872



0913



0932



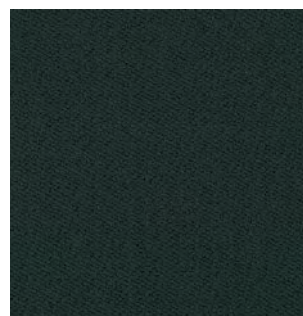
0943



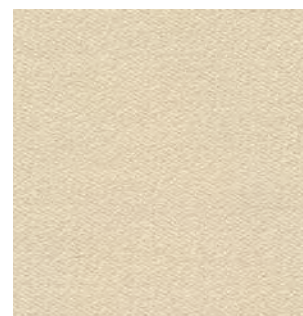
0956



0972



1062



1511

Textile Category 4

GRAND MOHAIR
by Danish Art Weaving



PRICE CATEGORY
4

MANUFACTURER
Danish Art Weaving

MATERIALS
100% Mohair

MARTINDALE
Being tested
(>200.000 Wyzenbeek)

LIGHTFASTNESS
4,5 (ISO 1-8)

PILLING
Being tested

CERTIFICATES
Oeko-Tex



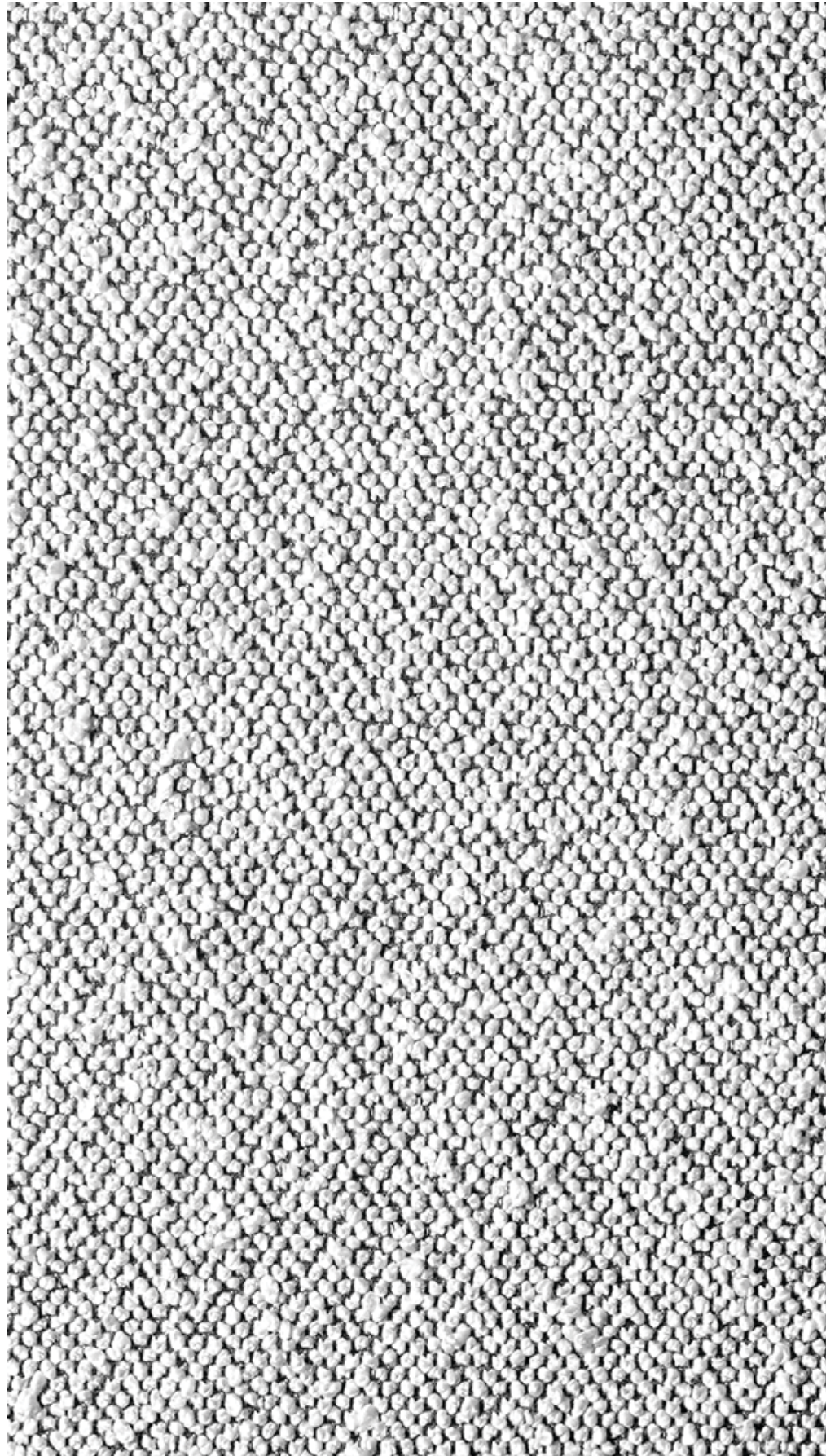
1103



2600



8205

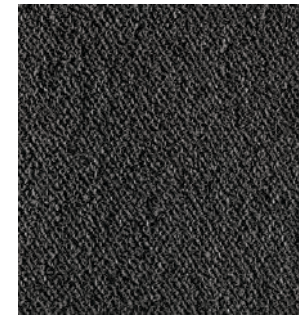


PRICE CATEGORY
4

MANUFACTURER
Dedar

MATERIALS
72% Wool
27% Cotton
1% Polyamide

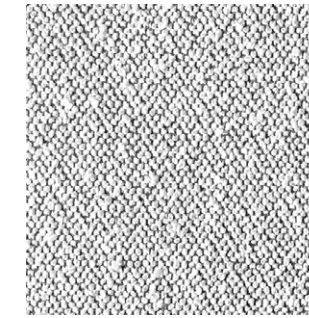
MARTINDALE
40.000



T19028_001



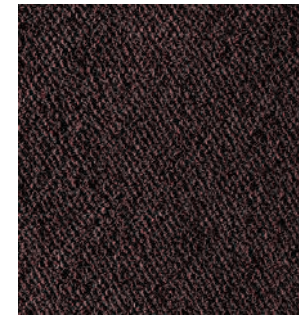
T19028_002



T19028_003



T19028_004



T19028_005



T19028_006



T19028_007



T19028_008



T19028_009

The Audo upholstery programme shows an overview of our textile and leather standard programme. All textile and leather collections are available in all colours.

Please note that the colour references are only intended as a guide. For further information please see manufacturer websites, or contact your local Audo sales representative.

Selection of textiles or leather outside of our upholstery programme, is subject to final testing and approval. Additional deliverytime may also occur.

SORENSENLEATHER.COM
NEVOTEX.COM



Use table to determine the upholstery options available for fabric-covered items.

PRICE CATEGORY 1	AFTERROOM	BRASILIA	CO CHAIR	CONSTANCE CHAIR	HARBOUR CHAIR	HARBOUR LOUNGE CHAIR	INGEBORG	KNITTING CHAIR	MERKUR	MINGLE	MY OWN CHAIR	READY	THE TIRED MAN	VILHELM	THE PENGUIN	ELIZABETH	THE SEAL
DAKAR, NEVOTEX	●	●	●		●	●	○	○	●		○	●	○	○	●	●	●
ULTRA, SØRENSEN LEATHER	●	●	●		●	●	○	○	●		○	●	○	○	○	○	○
ULTRA CRIB 5, SØRENSEN LEATHER	●	●	●		●	●	○	●	○		○	●	○	○	○	○	○
PRICE CATEGORY 2																	
DUNES, SØRENSEN LEATHER	●	●	●		●	○	○	○	●		○	●	○	○	●	●	●
NUANCE, SØRENSEN LEATHER	●	○	●		●	○	○	○	○		○	○	○	○	○	○	○
PRICE CATEGORY 3																	
ROYAL NUBUCK, SØRENSEN LEATHER	●	○	●		●	●	○	○	○		○	○	○	○	○	○	○
SHEEPSKIN CURLY, SKANDILOCK				●			●			●	●		●	●			
SHEEPSKIN CURLY, NEVOTEX		●						●									
PRICE CATEGORY 4																	
ELEGANCE, SØRENSEN LEATHER	●	○	●		●	○		○			○		○		●	●	●

- TESTED AND APPROVED.
- NOT TESTED YET, BUT POSSIBLE TO TEST

Leather Category 1



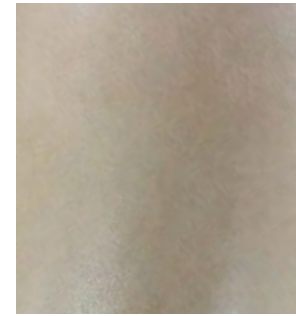
PRICE CATEGORY
1

MANUFACTURER
Nevotex

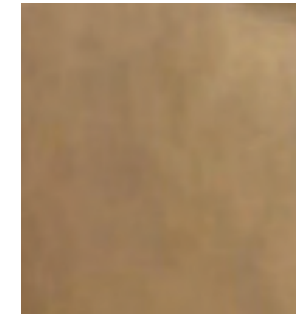
MATERIALS
Aniline leather

THICKNESS
0.9 – 1.1 mm

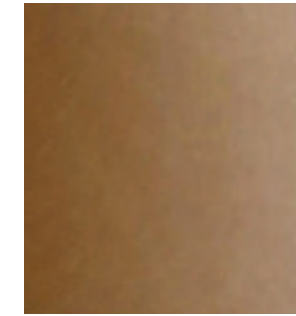
CERTIFICATE
OEKO-TEX®



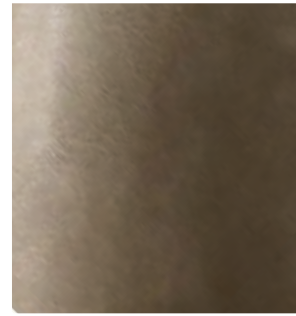
0197 TAN



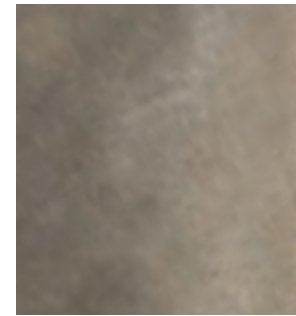
0229 CHESTNUT



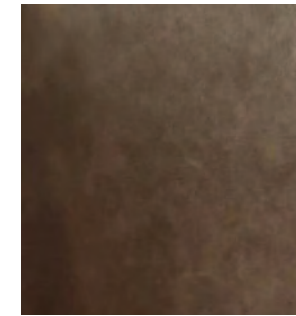
0250 COGNAC



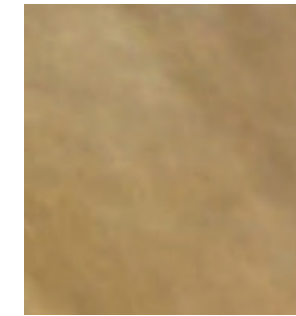
0258 SOIL



0311 ANTILOP



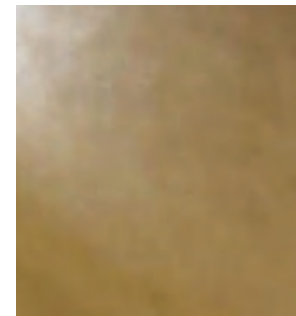
0329 BROWN



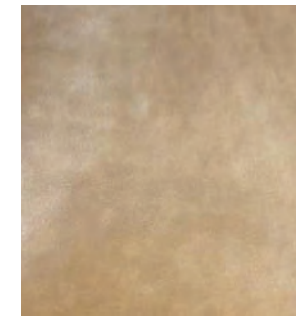
0549 DUNE



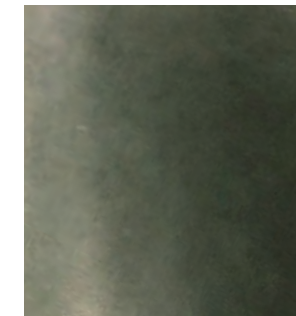
0550 YELLOW



0551 WHISKY



0565 ORANGE



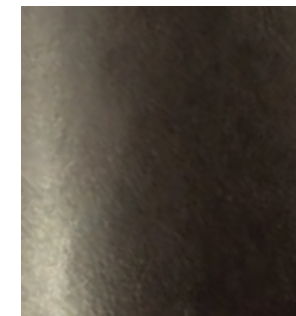
0681 DARK GREEN



0691 TERRAGON



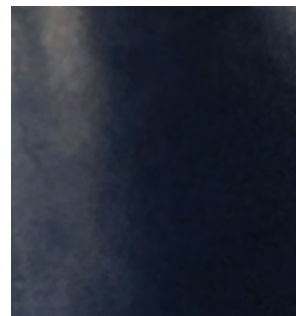
0692 LIGHT GREEN



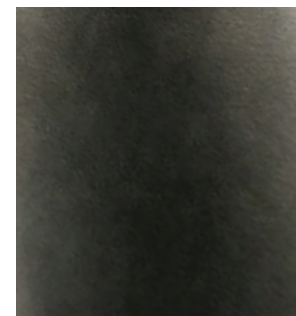
0738 AUBERGINE



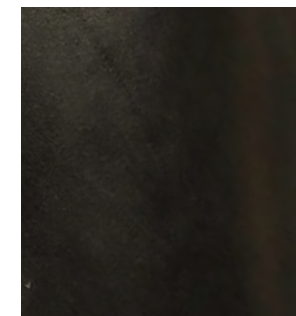
0778 TURKIS



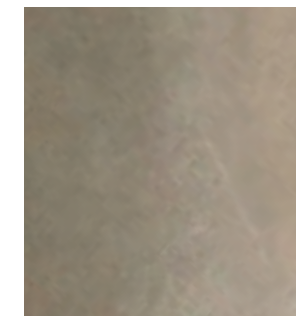
0779 DEEP BLUE



0780 DARK GREY



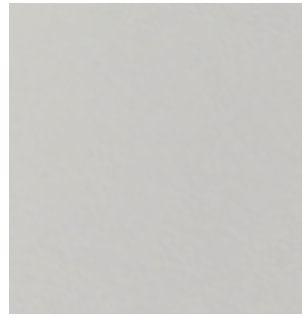
0842 BLACK



0854 GREY



0855 GRAYSHADOW



01015 WHITE



03009 CIOOCO



04009 PARROT



04010 POT-PORRY



04060 PURPLE



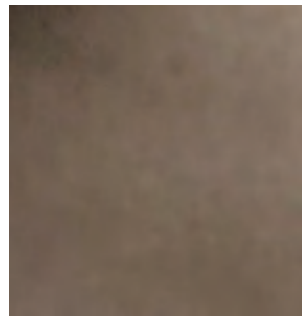
04109 RED



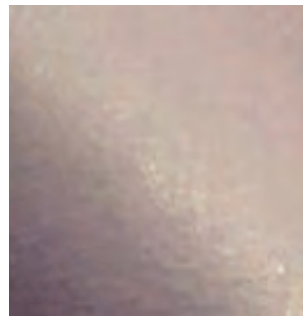
04147 DARK RED



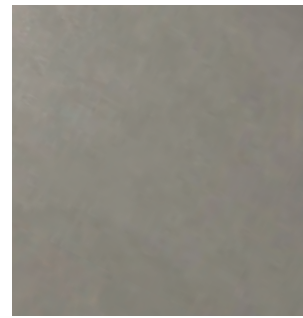
06013 GREEN



06048 PEATMOOS



07008 DARK PURPLE



08079 LIGHT GREY

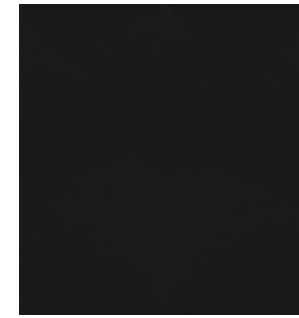


PRICE CATEGORY
1

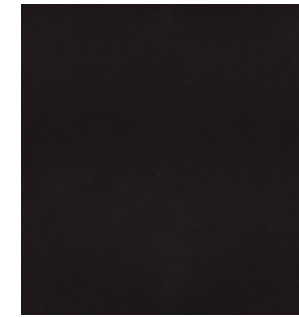
MANUFACTURER
Sørensen Leather

MATERIALS
Protected leather

THICKNESS
0.9 – 1.1 mm



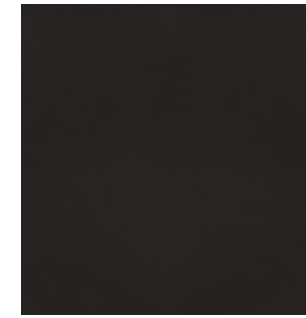
BLACK - 41599



BLACK BROWN - 41590



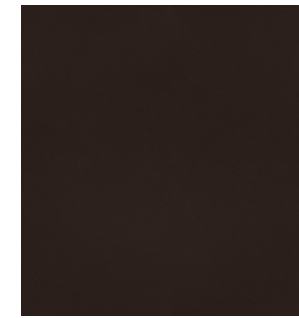
NAVY - 41573



ANTHRAZITE - 41580



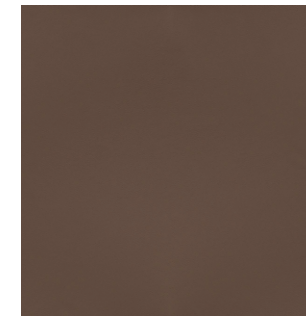
LAVA - 41575



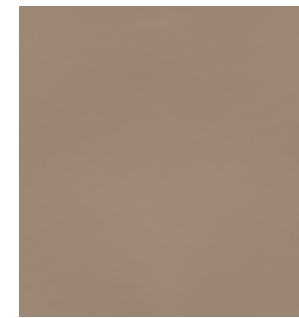
CHOCOLATE - 41589



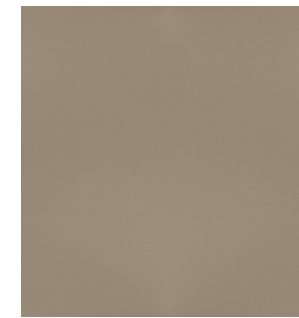
GREY - 41585



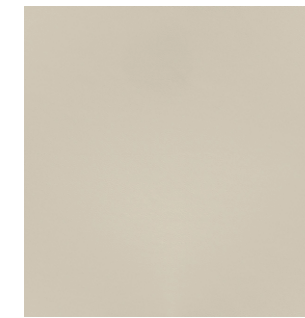
SAFARI - 41586



EARTH - 41584



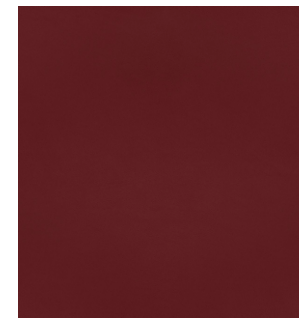
ALTWEISS - 41576



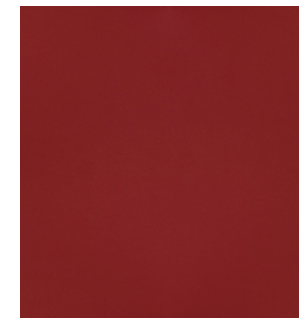
EGGSHELL - 41581



WHITE - 41594



BRICK - 41579



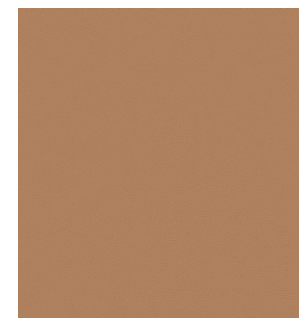
POPPY - 41578



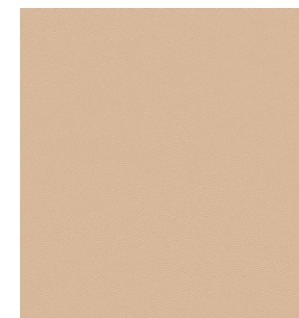
COGNAC - 41598



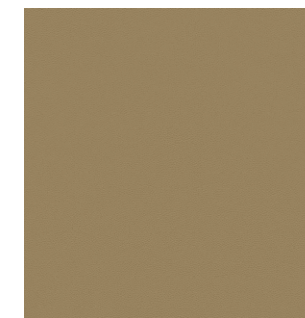
BRANDY - 41574



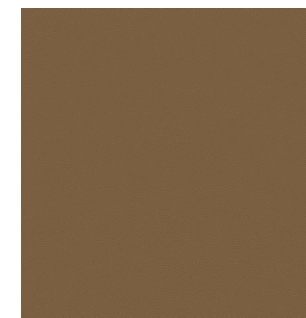
CAMEL - 41571



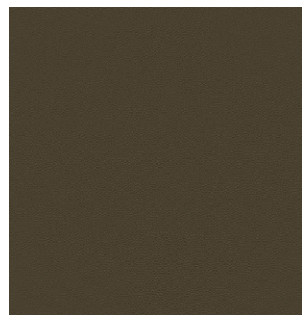
HONEY - 41572



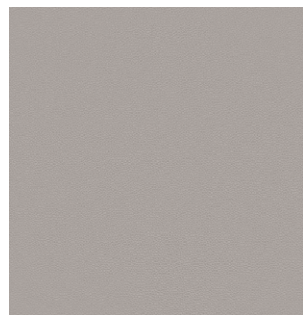
LEAF - 41566



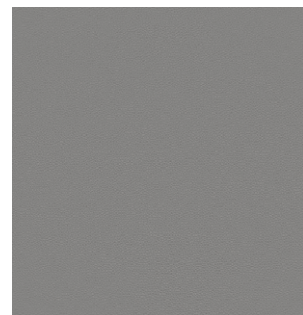
MARSH - 41570



MOSS - 41569



OAT - 41568



SMOKE - 41567

ULTRA CRIB 5
by Sørensen Leather



PRICE CATEGORY
1

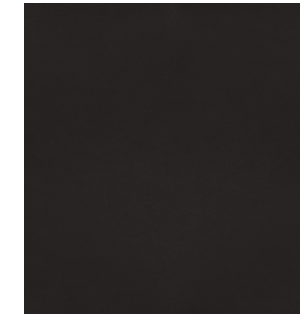
MANUFACTURER
Sørensen Leather

MATERIALS
Protected leather

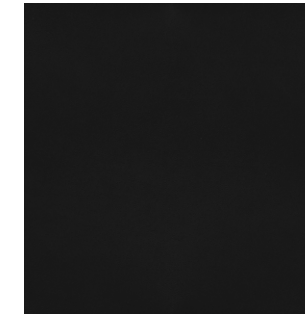
THICKNESS
0.9 – 1.1 mm



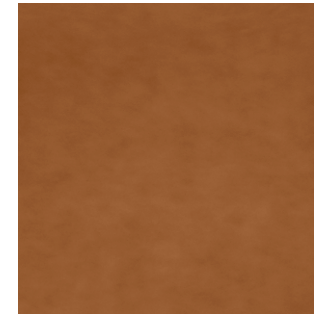
41610



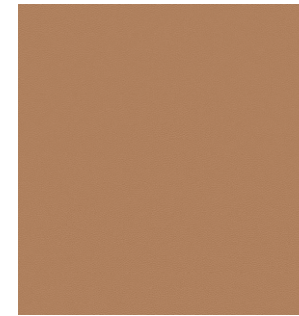
41615



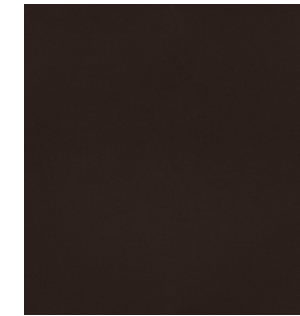
41616



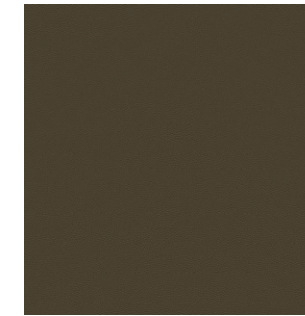
41612



41611



41614



41617



41613

Leather Category 2

DUNES

by *Sørensen Leather*



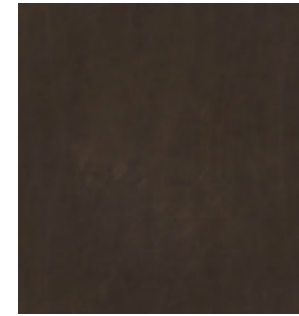
PRICE CATEGORY
2

MANUFACTURER
Sørensen Leather

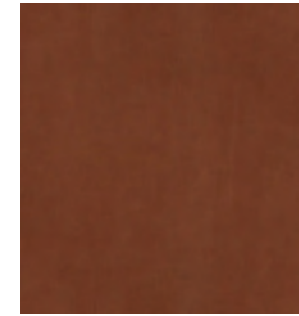
MATERIALS
Aniline leather

THICKNESS
1.1 – 1.3 mm

CERTIFICATE
Nordic Swan Ecolabel



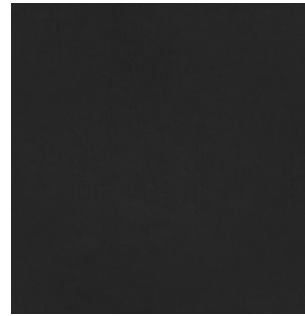
DARK BROWN - 21001



RUST - 21002



CAMEL - 21004



ANTHRAZITE - 21003



COGNAC - 21000



RACING GREEN - 21005



GREY - 21007

NUANCE
by Sørensen Leather



PRICE CATEGORY
2

MANUFACTURER
Sørensen Leather

MATERIALS
Protected leather

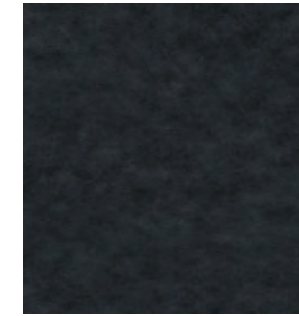
THICKNESS
1.1 – 1.3 mm



SHADOW GREY - 40780



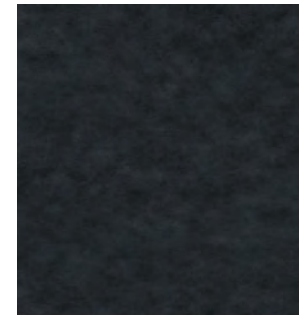
EARTHY GREY - 40781



HEAVENLY GREY - 40781



SMOKED GREY - 40784



BURNED GREY - 40783



LIGHT GREY - 40782



DARK GREEN - 40787



DARK BROWN - 40791



CINNAMON - 40788



BURGUNDY - 40789



WALNUT - 40790



RUST - 40786

Leather Category 3

ROYAL NUBUCK
by Sørensen Leather



PRICE CATEGORY
3

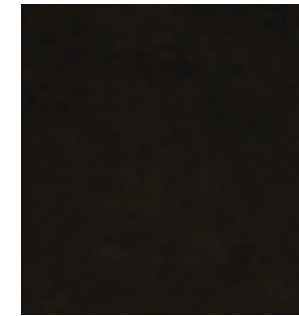
MANUFACTURER
Sørensen Leather

MATERIALS
Aniline leather

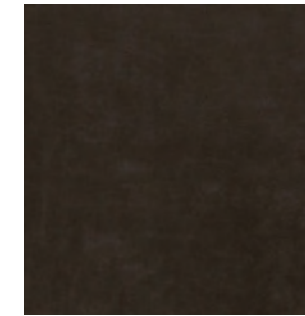
THICKNESS
1.2 – 1.6 mm



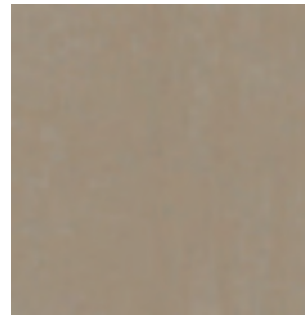
MINERAL - 30251



HAVANNA - 30258



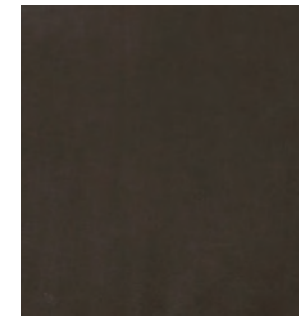
STONE - 30255



OFF-WHITE - 30252



LAVA - 30254



CINNAMON - 30257



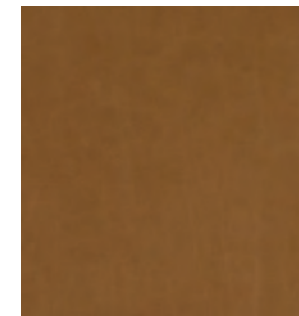
ALMOND - 30256



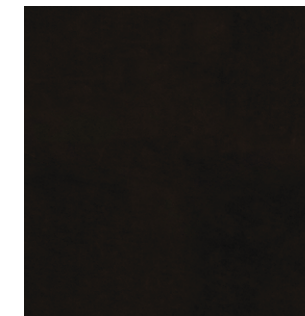
LIGHT GREY - 30250



ECRU - 30253



COGNAC - 30260



BLACK - 30259

SHEEPSKIN
by Skandilock



PRICE CATEGORY
3

MANUFACTURER
Skandilock

MATERIALS
Sheepskin

THICKNESS
17 mm



OFF WHITE



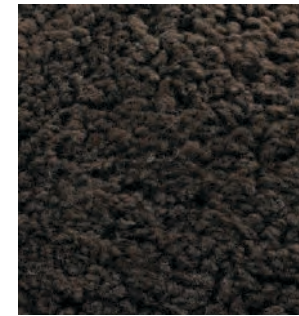
SAHARA



MOONLIGHT



HONEY



ESPRESSO



GREEN TEA



PRICE CATEGORY
3

MANUFACTURER
Nevotex

MATERIALS
Sheepskin

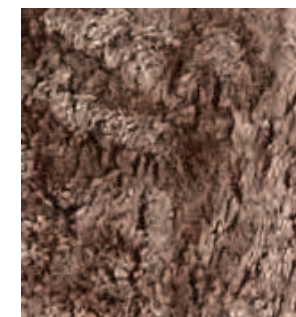
THICKNESS
17 – 21mm



NATURE



SAHARA



ROOT

Leather Category 4

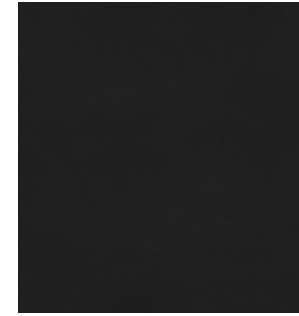


PRICE CATEGORY
4

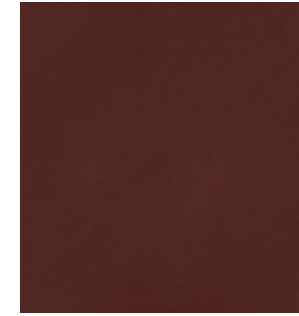
MANUFACTURER
Sørensen Leather

MATERIALS
Aniline leather

THICKNESS
1.2 – 1.4 mm



BLACK - 20198



INDIAN RED - 20193



WALNUT - 20195



MOCCA - 20197

Individual and unique markings may appear on the leather and should not be considered as defects.



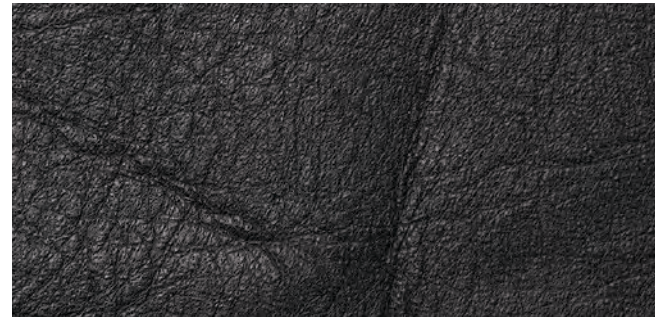
FAT WRINKLES



SCAR / INSECT BITES



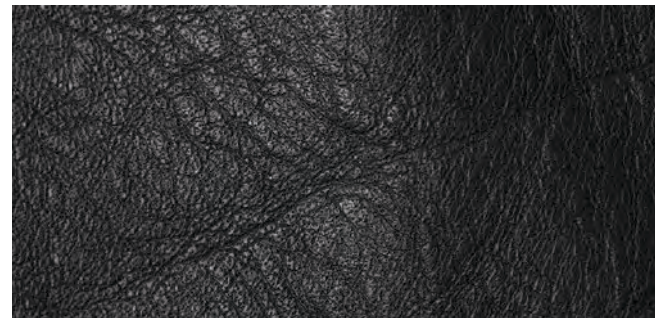
FOLDS



BUTCHING SCAR



HEALED SCARS



FAT WRINKLES

