

Audo



Textile

The Audo Upholstery Program is an overview of the textile and leathers available for Audo upholstered furniture. All textile and leather options are available in all colors. You'll find over 100 fabric and leather options, with the most popular configurations available with expedited delivery in our Quick Ship program. Custom upholstery orders from our Audo Upholstery Program (SPEC) are ready to ship with standard delivery lead times. Our Fixed Combinations listed in this Brand Book are suggested upholsteries selected by our design team, and deliver with standard lead times.

We are happy to upholster furniture using customer's own materials (COM) with extended delivery lead times, upon fabric approval. COM products are to be calculated by PC1T if in textile and PC1L if in leather, excluding the price of the fabric.

Please note that the color references in this upholstery programme are only intended as a guide. For further information please see manufacturer websites, or contact your local Audo Sales Representative for samples or further information.

KVADRAT.DK
SAHCO.COM
NEVOTEX.COM
JAB.DE
DANISHARTWEAVING.COM
DEDAR.COM



Use table to determine the upholstery options available for fabric-covered items.

	AFTERNOON	BRASILIA	CAIRN	CO CHAIR	CONSTANCE CHAIR	CONSTANCE SOFA	EAVE COLLECTION	HARBOUR CHAIR	HARBOUR LOUNGE CHAIR	INGEBORG	KNITTING CHAIR	MERKUR	MINGLE	MY OWN CHAIR	OFFSET	READY	TEAROOM CHAIR	TEAROOM SOFA	THE TIRED MAN	VILHELM	THE PENGUIN	ELIZABETH	ODA	PAGODE	RADIOHUS	THE SEAL	
PRICE CATEGORY 1																											
BARNUM BOUCLÉ, AUDIO	●	●	●	●	○	○	●	●	○	○	○	●	○	○	●	●	●	●	●	○	○	○		○	○	○	
CHAMPION, JAB	●	●	●	●	○	○	●	●		○	●	○	○	○	●	○	●	●	○	○	○	○		○	○	○	
HOT MADISON FR, JAB	○	○	○	○	○	○	○	○	○	○		○	○	○	○	○	○	○	○	○	○	○		○	○	○	
ILLUSION, NEVOTEX	○	○	○	○	○	○	○	○		○	●	○	○	○	○	○	○	○	○	○	○	○				○	○
MAPLE, KVADRAT	●	●	●	●	○	○	●	●		○	●	○	○	○	●	○	●	●	○	○							
REMIX, KVADRAT	●	●	●	●	○	○	●	●	●	○	●	○	○	●	●	●	●	●	○	○	●	●		●	●	●	
RE-WOOL, KVADRAT	●	○	●	●	○	○	●	●	●	○	○	○	○	○	●	●	●	○	○	○	○	●	●		●	●	●
PRICE CATEGORY 2																											
CANVAS 2, KVADRAT	●	●	●	●	○	○	●	●	●	○	●	○	○	○	●	●	●	●	○	○	○	○		○	○	○	
CLAY, SAHCO, KVADRAT	●	●	○	●	○	○	●	●	○	○	○	○	○	○	●	○	●	●	○	○	○	○		○	○	○	
COLLINE, KVADRAT	●	●	○	●	○	○	●	●	●	●	●	○	●	●	●	●	●	●	○	●	○	○		○	○	○	
FIORD, KVADRAT	●	●	●	●	○	○	●	●	●	●	●	○	○	●	●	●	●	●	○	●	●	●	●		●	●	●
HALLINGDAL 65, KVADRAT	●	●	●	●	●	●	●	●	●	●	●	●	●	●	●	●	●	●	●	●	●	●	●	●	●	●	
MOSS, SAHCO, KVADRAT	●	●	●	●	○	○	●	●	●	○	●	○	○	○	●	●	●	●	●	●	●	●	○	○	○	○	
STEELCUT, KVADRAT	●	○	●	●	○	○	●	●	●	○	○	○	○	○	●	○	●	○	○	○	○	●	●		○	○	●
STEELCUT TRIO 3, KVADRAT	●	○	●	●	○	○	●	●	●	○	●	○	○	○	●	○	●	●	○	●	●	●		○	○	●	
PRICE CATEGORY 3																											
SAFIRE, SAHCO, KVADRAT	●	●	●	●	○	○	●	●	●	○	●	○	○	●	○	○	●	●	○	○	●	○	○	○	●	●	○
VIDAR 4, KVADRAT	●	●	●	●	○	○	●	●	●	●	○	○	●	●	●	○	●	●	○	●	●	○	○	○	○	○	
PRICE CATEGORY 4																											
GRAND MOHAIR, DANISH ART WEAVING	○	○	●	●	●	●	●	○	●	●	○	○	●	○		○	○	●	○	●	○	○		○	○	○	
LUPO, DEDAR	●	○	○	●	○	○	●	●	○	○	○	○	○	○	●	○	●	○	○	○	○	○	○	○	○	○	

- TESTED AND APPROVED.
- NOT TESTED YET, BUT POSSIBLE TO TEST

Textile Category 1

BARNUM BOUCLE
by Audo



PRICE CATEGORY
1

MANUFACTURER
Audo

MATERIALS
45% Cotton
19% Viscose
15% Wool
13% PC
8% Polyester

MARTINDALE
60,000

LIGHTFASTNESS
5

PILLING
4



04



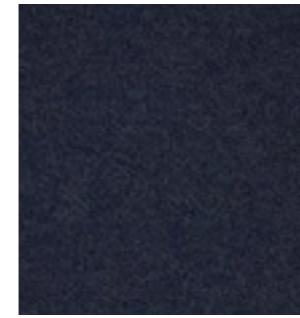
05



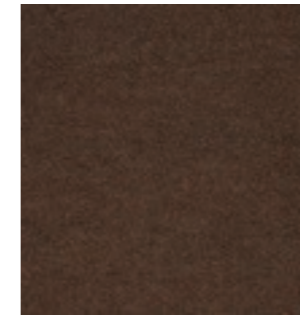
10



11



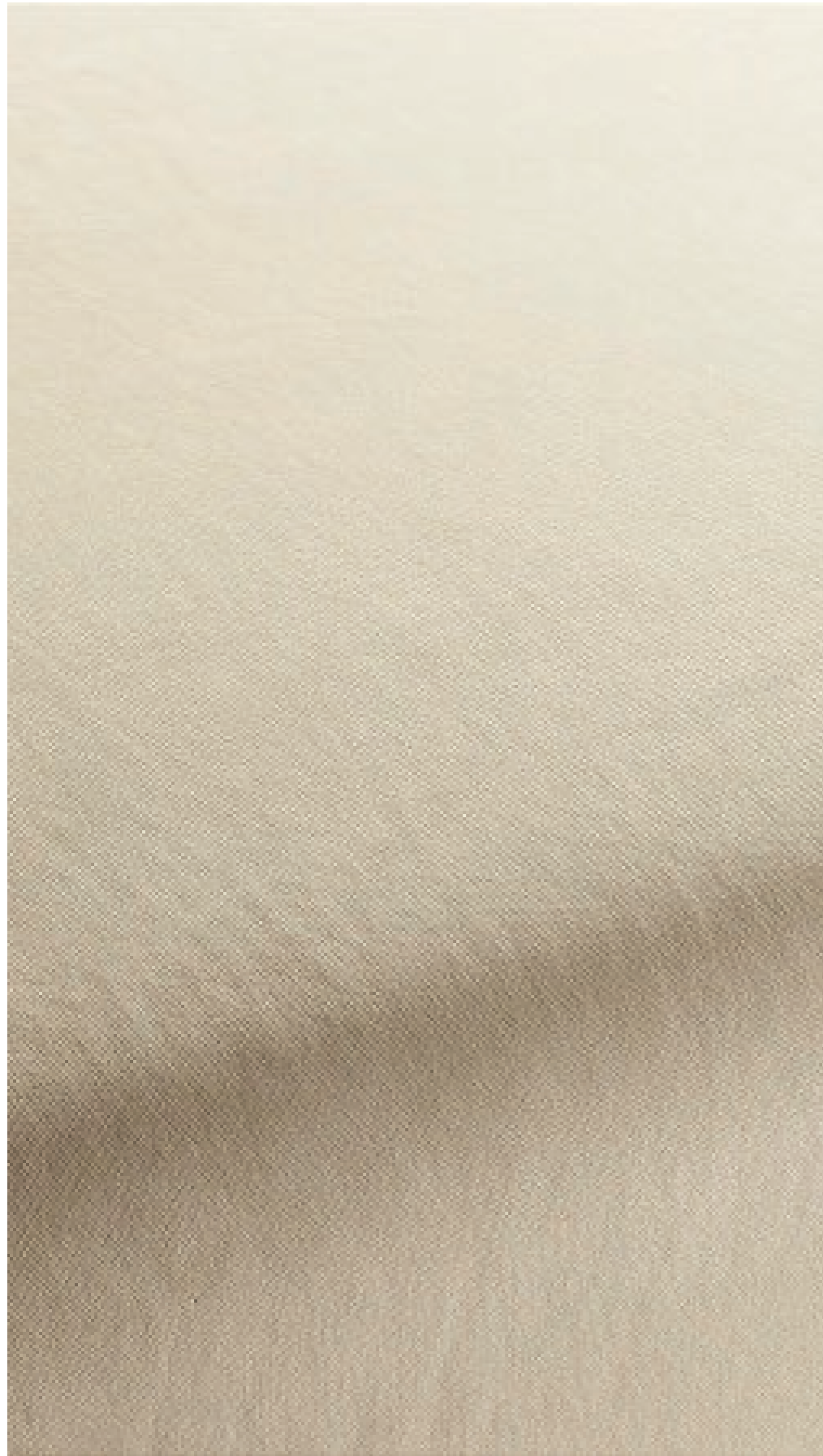
19



21



24



PRICE CATEGORY
1

MANUFACTURER
JAB

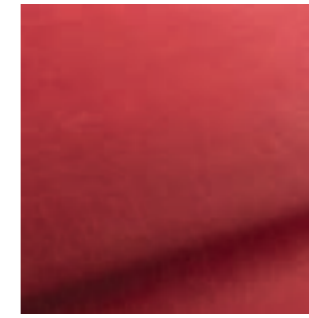
MATERIALS
100% Polyester

MARTINDALE
70.000

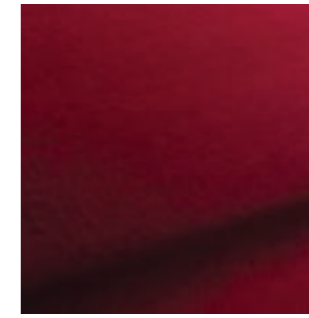
LIGHTFASTNESS
5



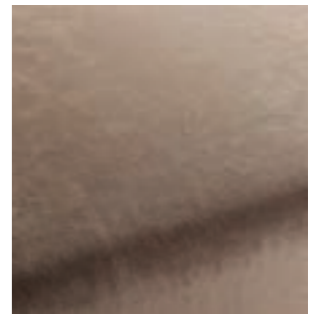
1-3114-010



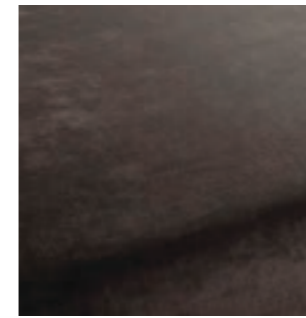
1-3114-011



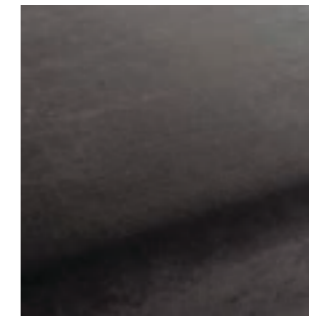
1-3114-012



1-3114-020



1-3114-021



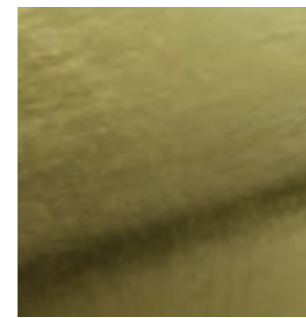
1-3114-022



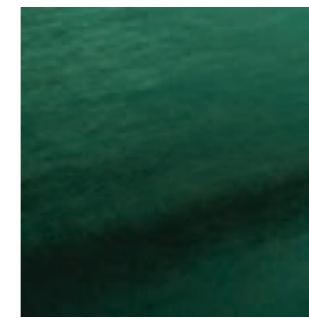
1-3114-030



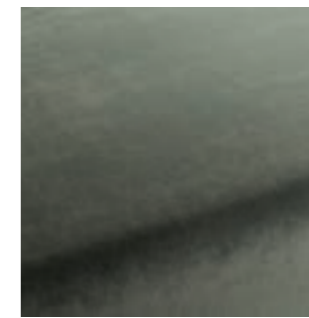
1-3114-031



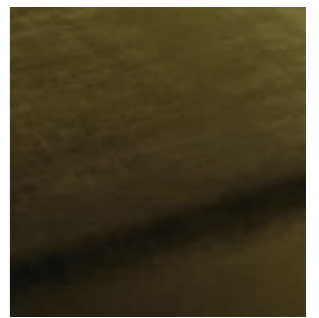
1-3114-032



1-3114-033



1-3114-034



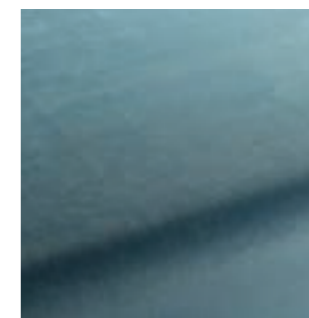
1-3114-035



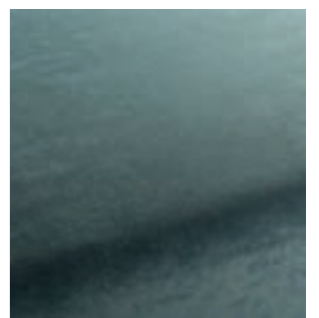
1-3114-040



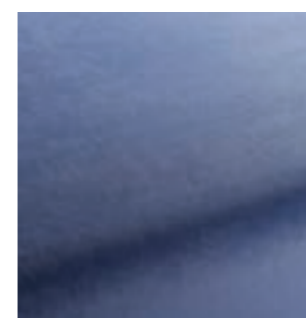
1-3114-041



1-3114-050



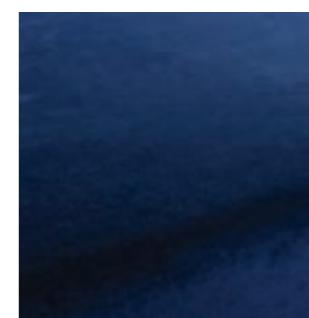
1-3114-051



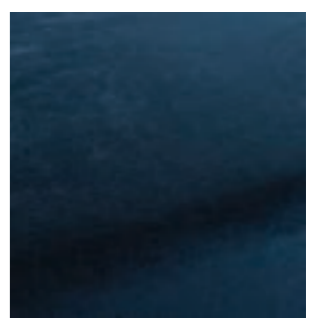
1-3114-052



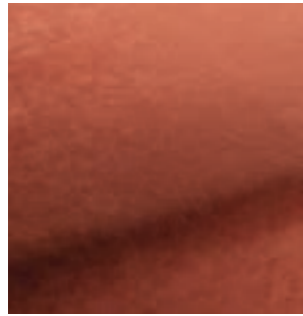
1-3114-053



1-3114-054



1-3114-055



1-3114-060



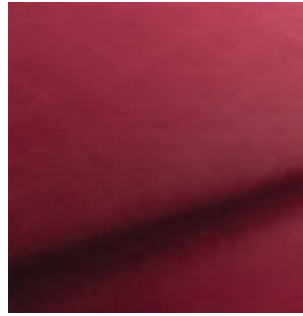
1-3114-061



1-3114-062



1-3114-063



1-3114-064



1-3114-070



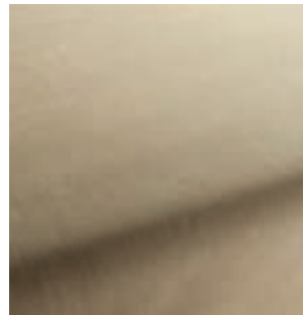
1-3114-071



1-3114-072



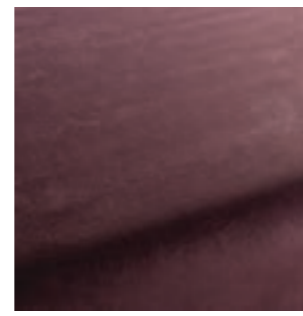
1-3114-073



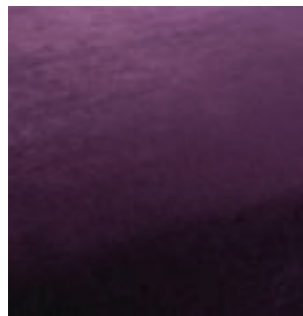
1-3114-074



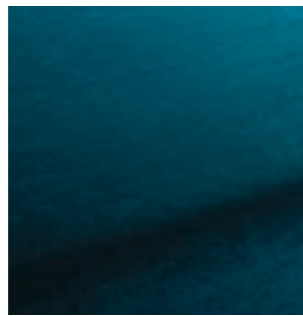
1-3114-075



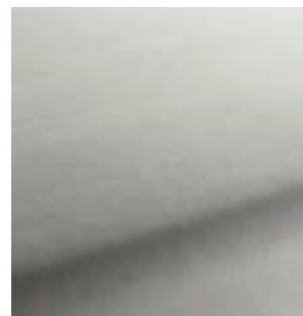
1-3114-080



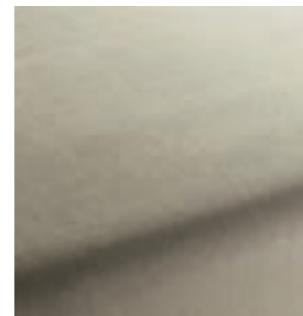
1-3114-081



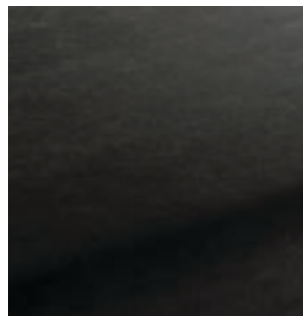
1-3114-082



1-3114-091



1-3114-092





PRICE CATEGORY
1

MANUFACTURER
Nevotex

MATERIALS
Artificial leather

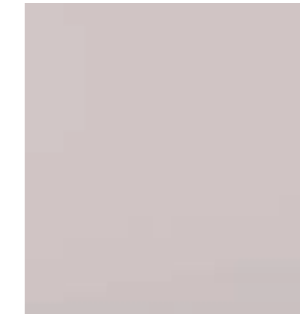
THICKNESS
1 mm



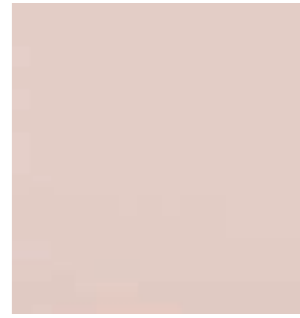
82417



93086



53593



22427



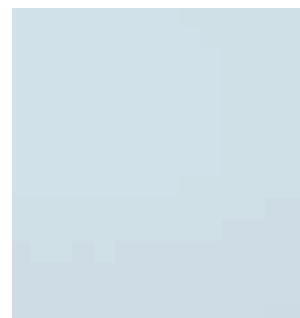
65072



72133



63174



61602



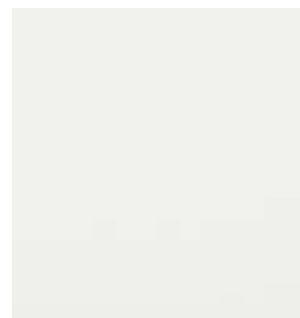
65307



74007



76236



00800



84176



85352



87241



36519



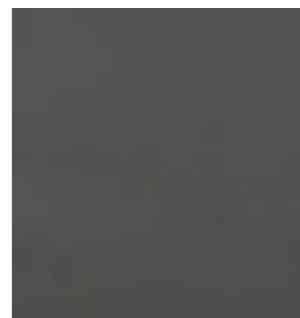
44184



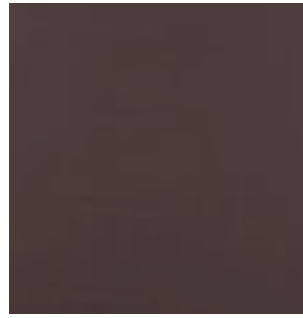
24784



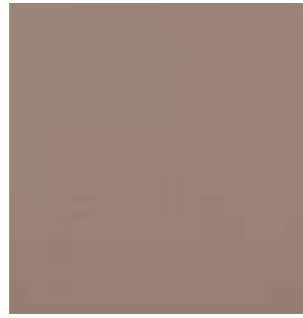
45633



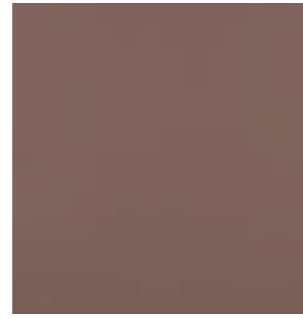
57841



48013



46508



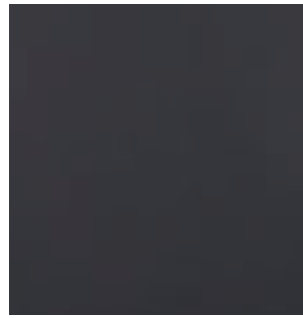
47124



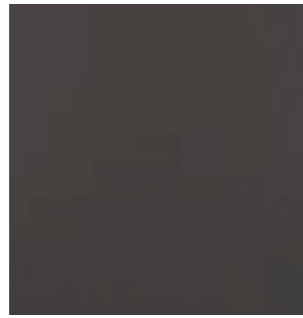
67403



47069



68523



58290



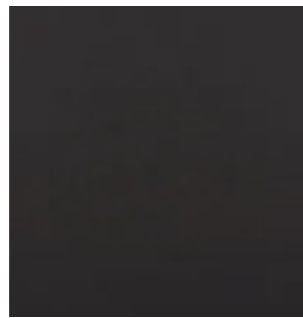
68746



65066



67382



00110



83430



85020



44388



36850



23660



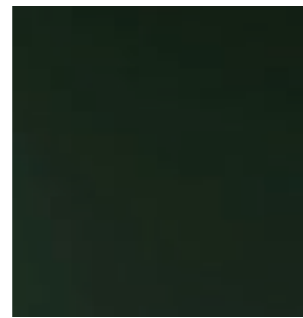
28040



75566



76725

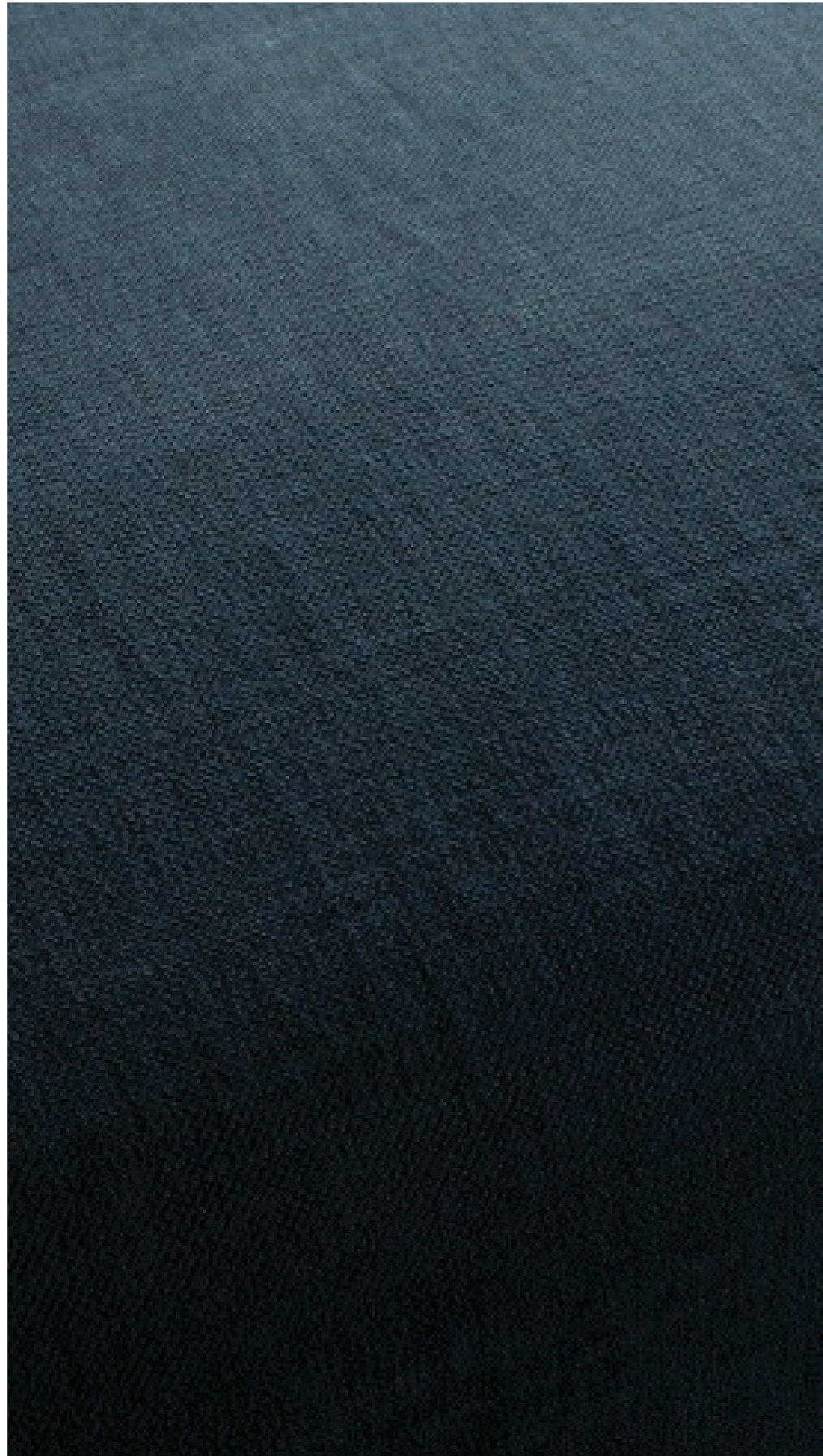


77773



66745

HOT MADISON FR
by JAB



PRICE CATEGORY
1

MANUFACTURER
JAB

MATERIALS
63% Cotton
37% Linen

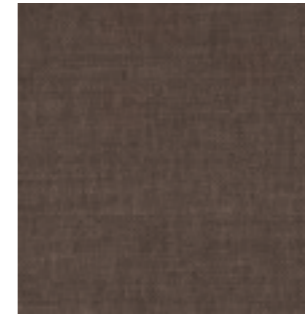
MARTINDALE
35.000

LIGHTFASTNESS
4-5

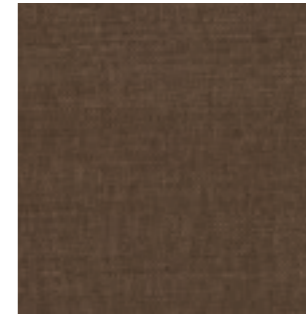
PILLING
4



CH3099-013



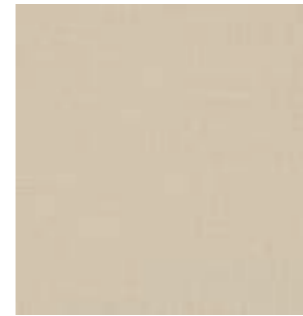
CH3099-020



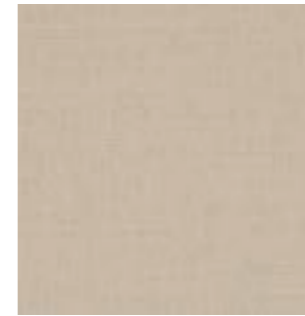
CH3099-023



CH3099-053



CH3099-070



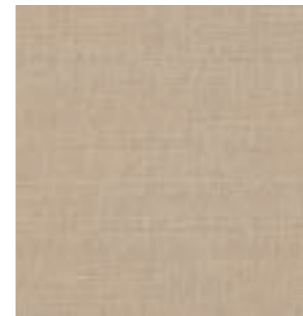
CH3099-072



CH3099-073



CH3099-074



CH3099-077



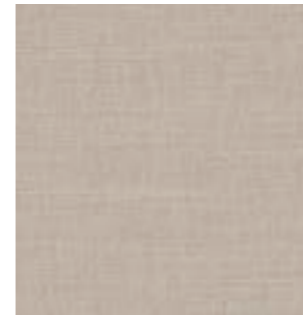
CH3099-089



CH3099-093



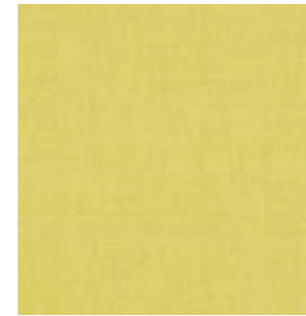
CH3099-094



CH3099-095



CH3099-097



CH3099-130



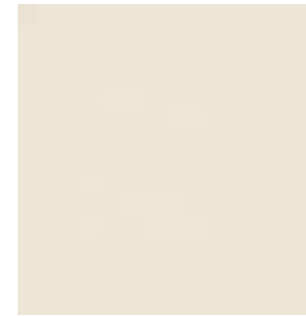
CH3099-133



CH3099-155



CH3099-171



CH3099-172



CH3099-180



CH3099-185



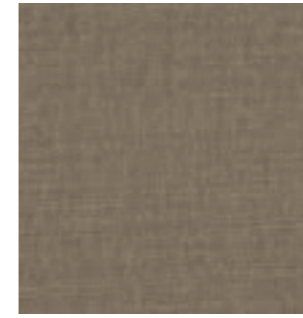
CH3099-192



CH3099-194



CH3099-195



CH3099-714



CH3099-716



CH3099-720



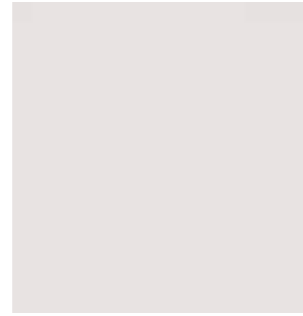
CH3099-722



CH3099-203



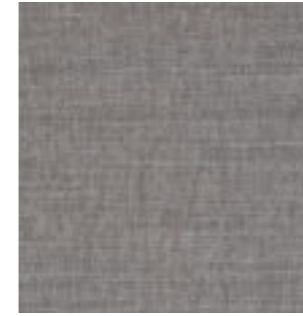
CH3099-419



CH3099-420



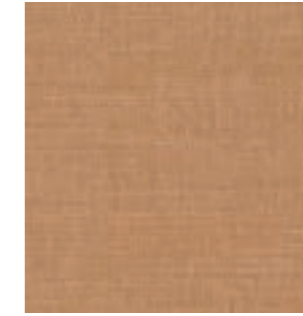
CH3099-424



CH3099-724



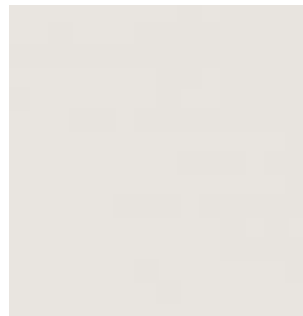
CH3099-726



CH3099-727



CH3099-884



CH3099-478



CH3099-499



CH3099-503



CH3099-521



CH3099-903



CH3099-934



CH3099-936



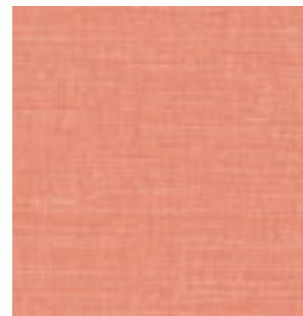
CH3099-988



CH3099-562



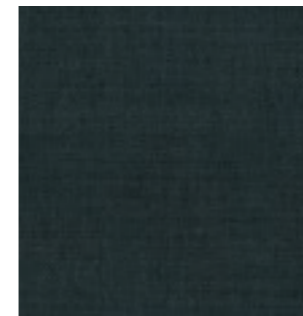
563-097



CH3099-565



CH3099-567



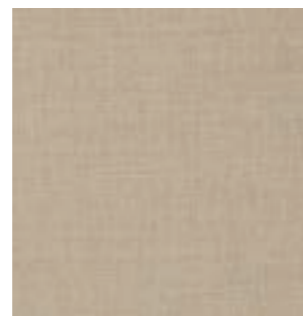
CH3099-995



CH3099-568



CH3099-569



CH3099-695



CH3099-706

MAPLE
by Kvadrat



PRICE CATEGORY
1

MANUFACTURER
Kvadrat

MATERIALS
81% Viscose
15% Linen
4% Non-woven Polyester
backing

MARTINDALE
30.000

LIGHTFASTNESS
5-7

PILLING
5



0102



0112



0132



0142



0162



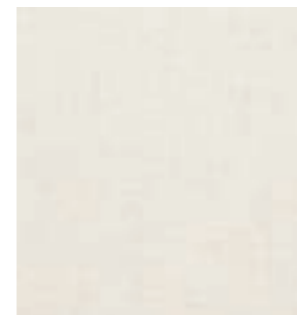
0172



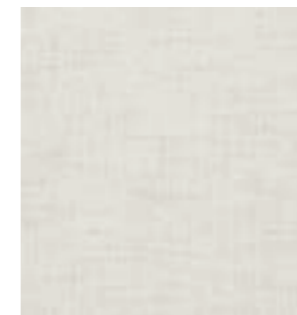
0192



0202



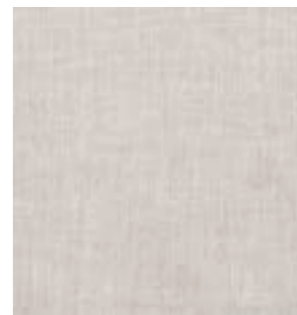
0212



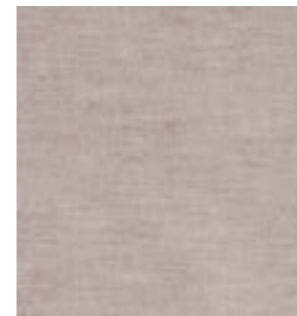
0222



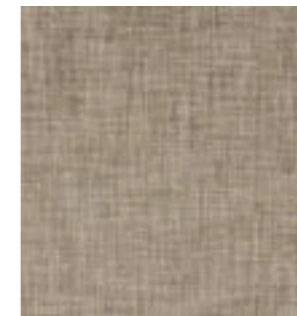
0232



0332



0342



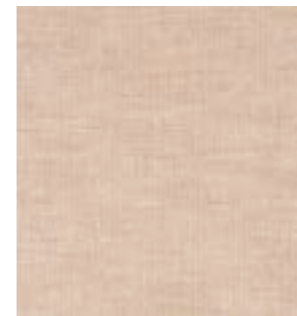
0352



0362



0392



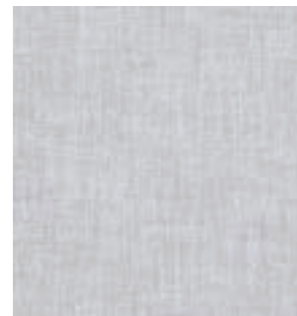
0542



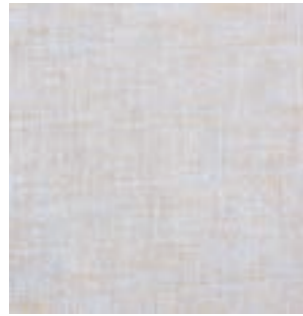
0562



0662



0722



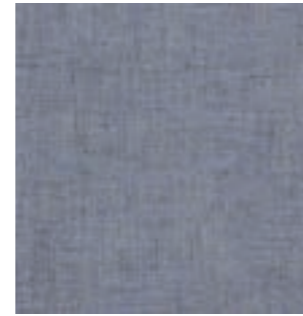
0732



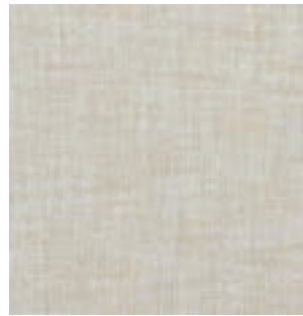
0742



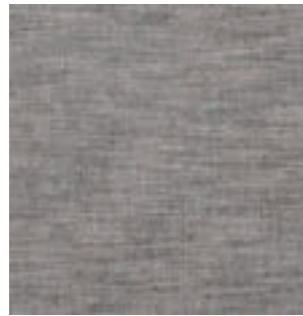
0762



0792



0832



0862



PRICE CATEGORY
1

MANUFACTURER
Kvadrat

MATERIALS
90% New wool
10% Nylon

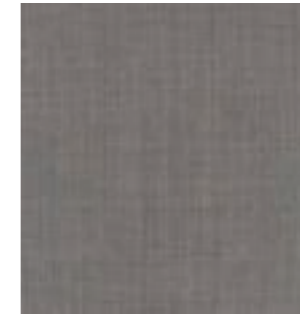
MARTINDALE
100.000

LIGHTFASTNESS
5-7

PILLING
4



0113



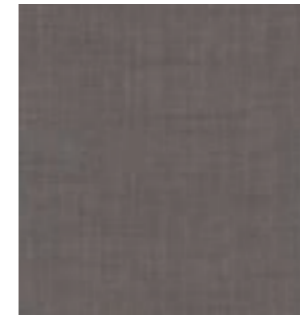
0123



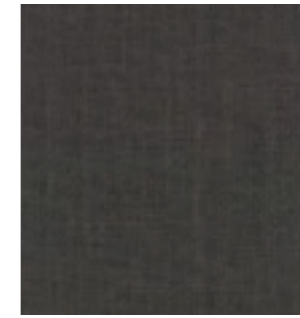
0126



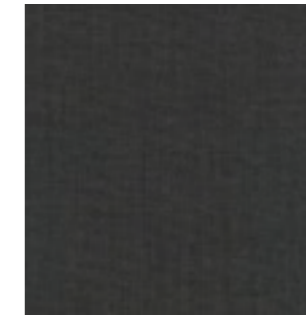
0133



0136



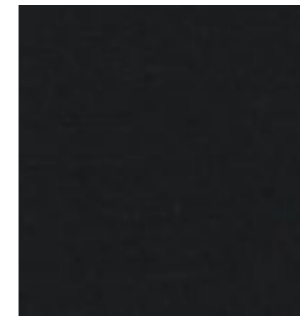
0143



0152



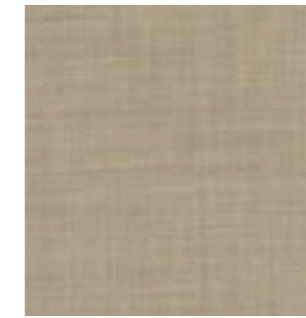
0173



0183



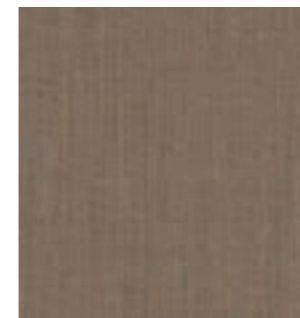
0196



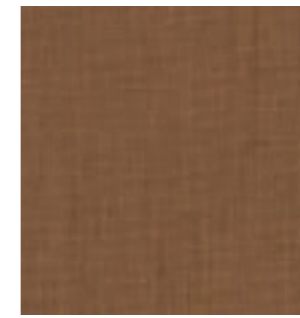
0223



0233



0242



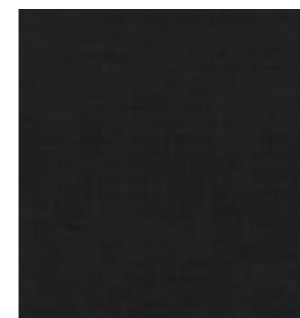
0252



276



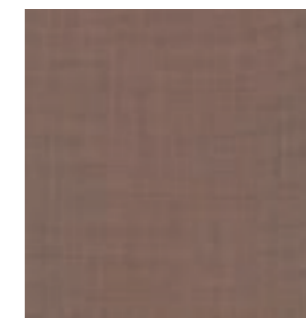
0266



0276



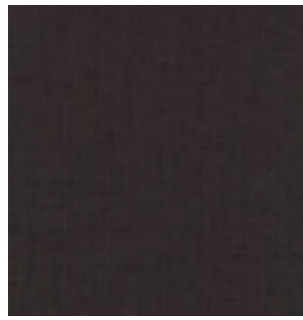
0296



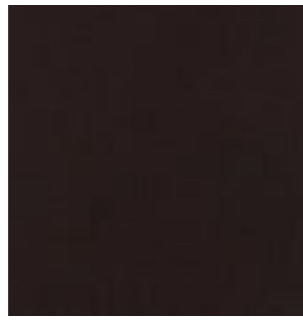
0326



0346



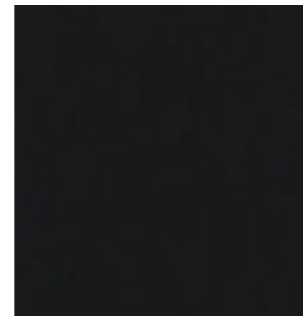
0356



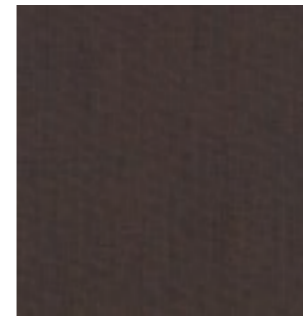
0362



0373



0383



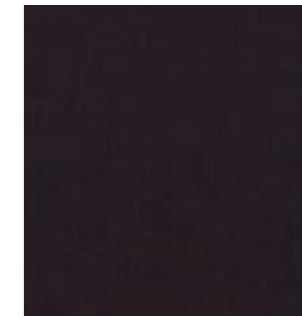
0672



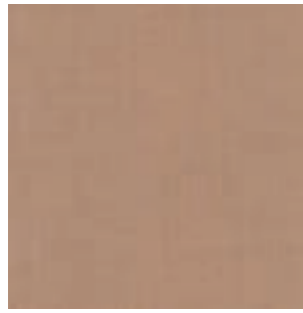
0682



0686



0692



0406



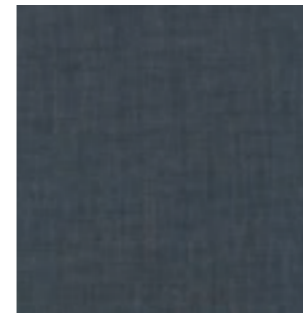
0412



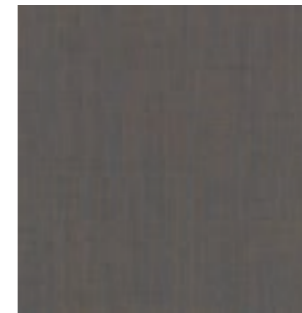
0422



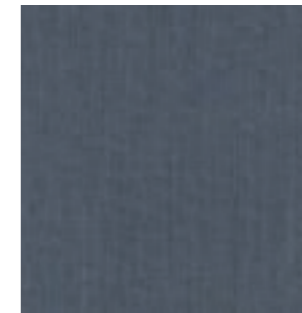
0433



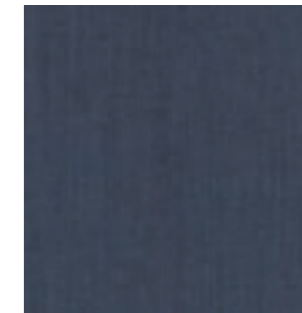
0716



0722



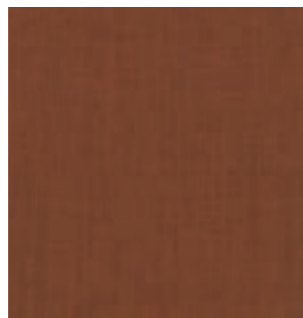
0733



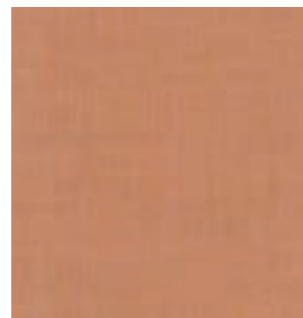
0743



0443



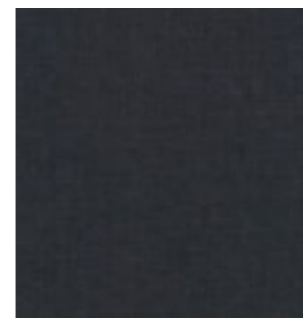
0452



0516



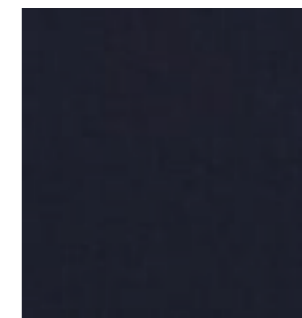
0536



0753



0762



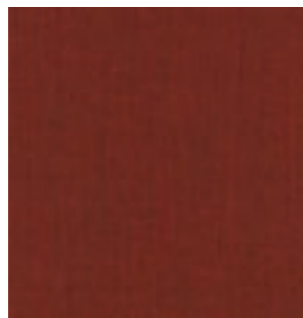
0773



0783



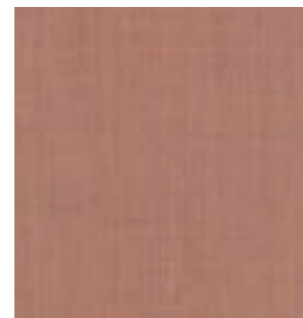
0543



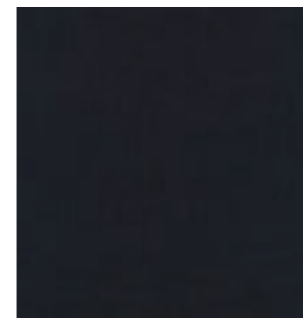
0566



0606



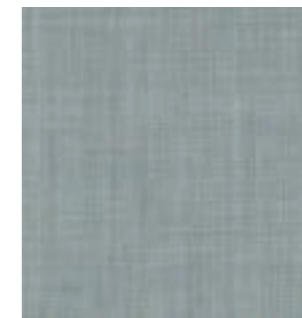
0612



0796



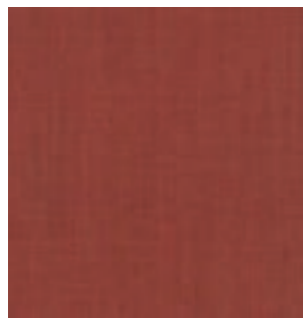
0816



0823



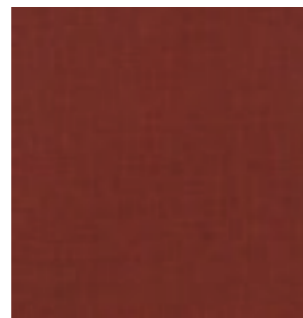
0836



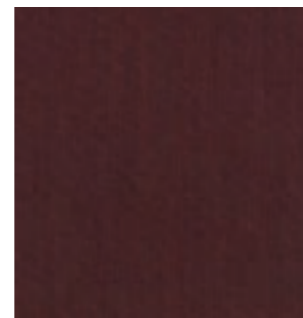
0632



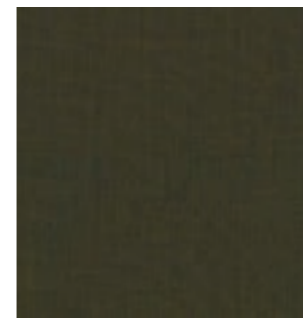
0643



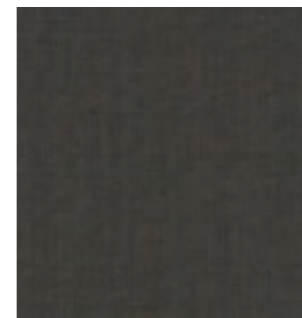
0653



0662



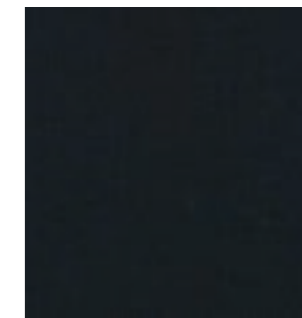
0842



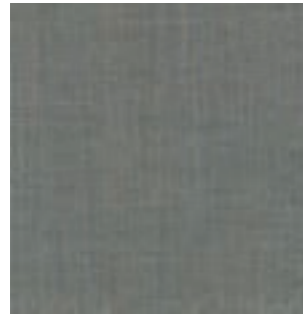
0852



0866



0873



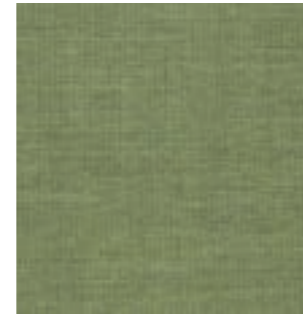
0906



0912



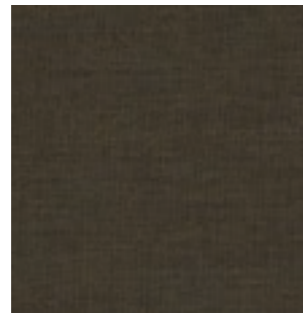
0923



0933



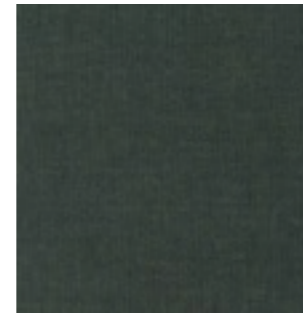
0942



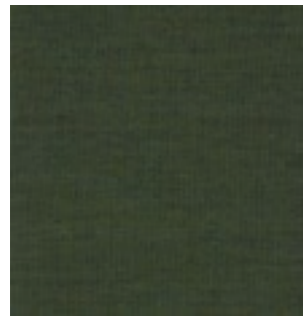
0954



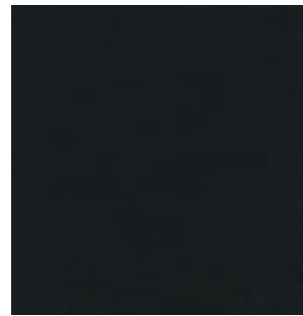
0962



0973



0982



0996



PRICE CATEGORY
1

MANUFACTURER
Kvadrat

MATERIALS
45% new wool worsted
45% recycled wool
10% nylon

MARTINDALE
100.000

LIGHTFASTNESS
5-7 (ISO 1-8)

PILLING
4 (ISO 1-5)



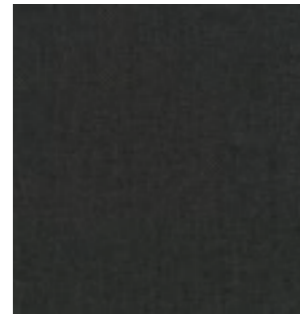
0108



0128



0158



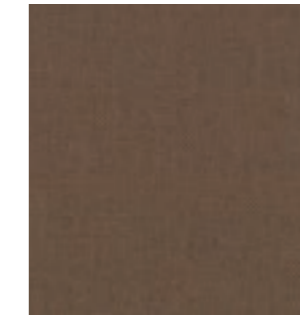
0198



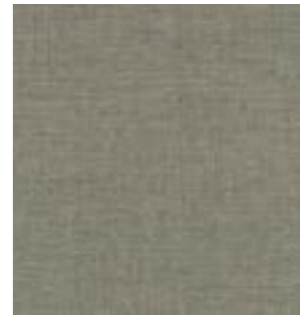
0218



0358



0378



0408



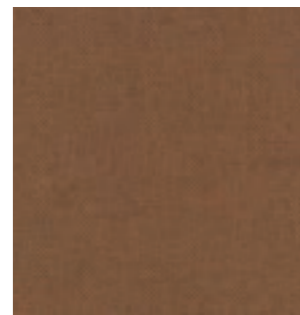
0448



0458



0558



0568



0628



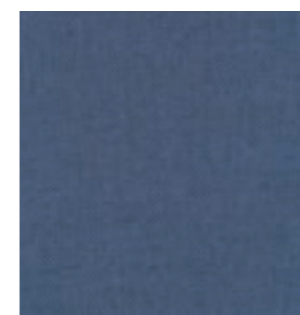
0648



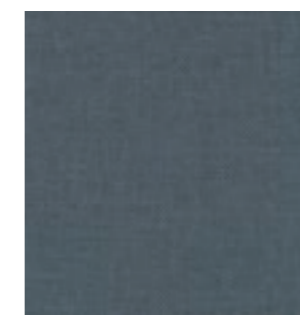
0658



0718



0758



0768



0828



0858



0868

Textile Category 2



PRICE CATEGORY
2

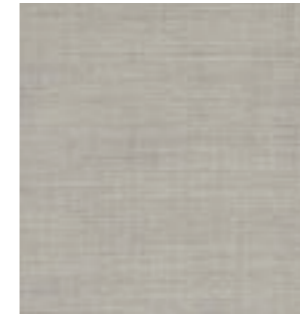
MANUFACTURER
Kvadrat

MATERIALS
90% New wool
10% Nylon

MARTINDALE
100.000

LIGHTFASTNESS
5-7

PILLING
4-5



114



124



134



154



174



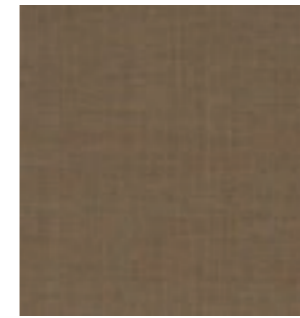
216



224



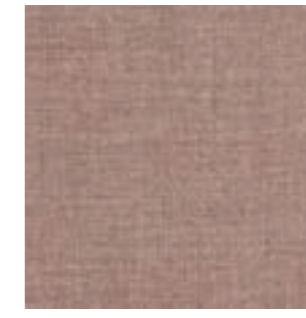
244



254



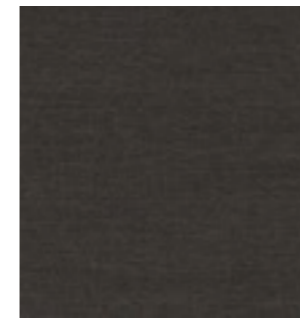
264



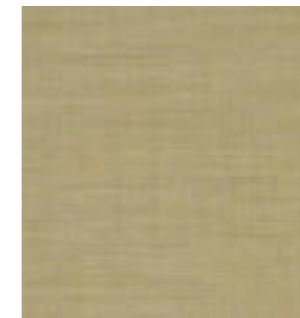
356



364



374



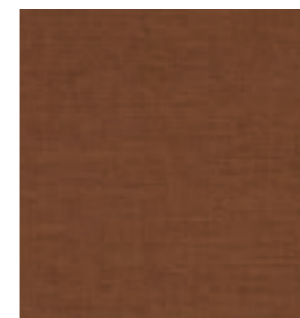
414



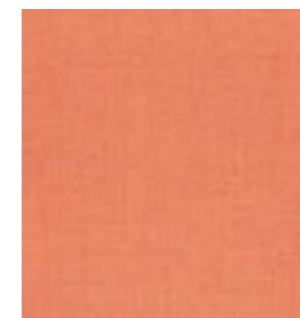
424



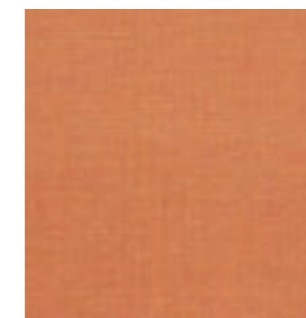
446



454



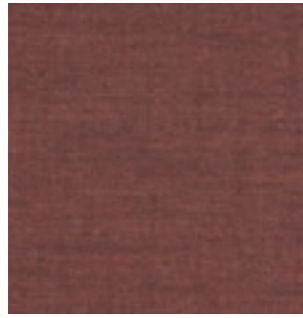
546



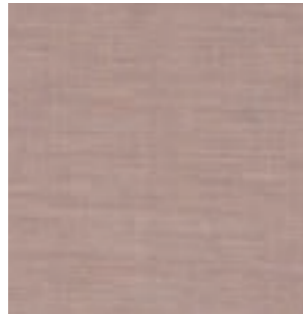
556



566



576



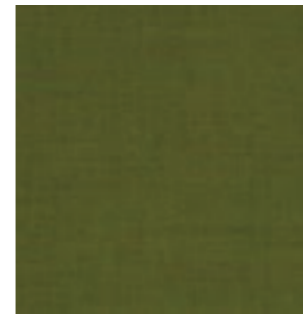
614



644



654



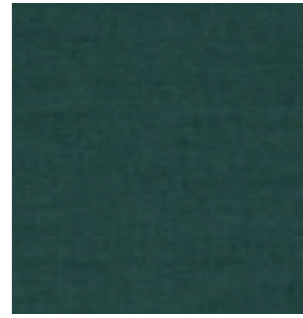
954



964



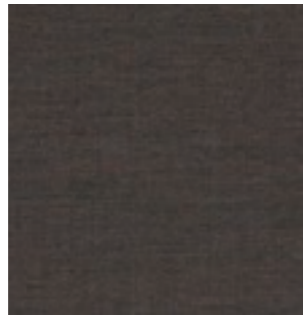
974



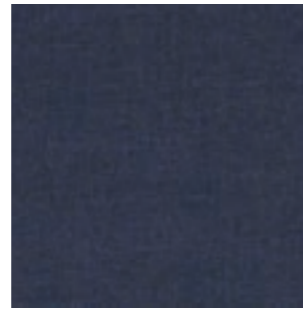
984



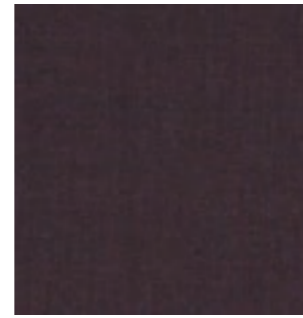
666



674



684



694



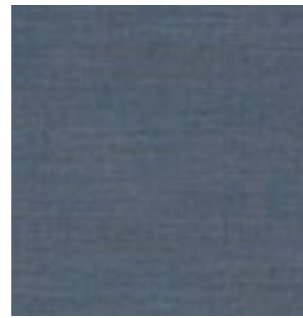
996



716



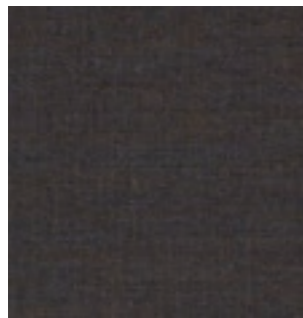
726



734



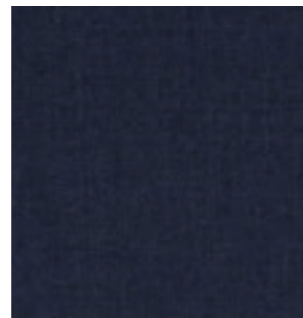
746



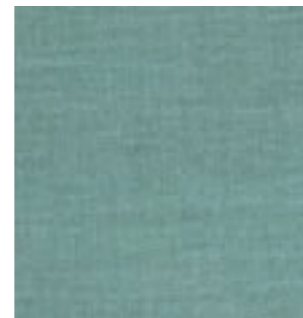
764



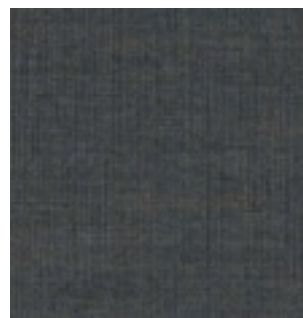
786



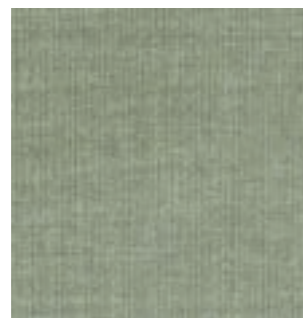
794



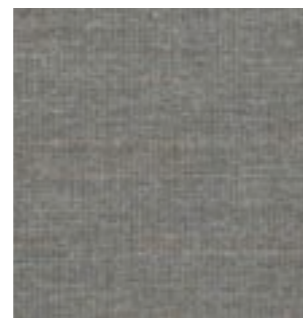
836



854



926



936



946



PRICE CATEGORY
2

MANUFACTURER
Sahco

MATERIALS
76% Linen
21% Cotton
3% Polyester

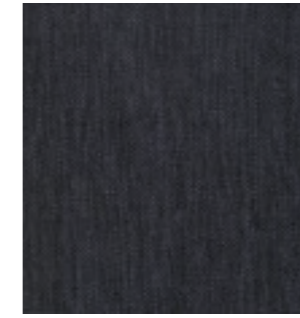
MARTINDALE
45.000

LIGHTFASTNESS
4-6

PILLING
4



0001



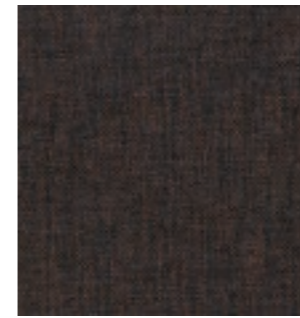
0002



0003



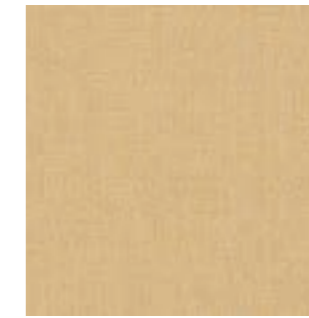
0004



0005



0006



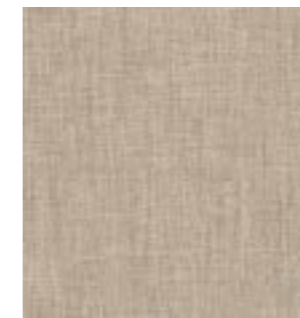
0007



0008



0009



0010



0011



0012



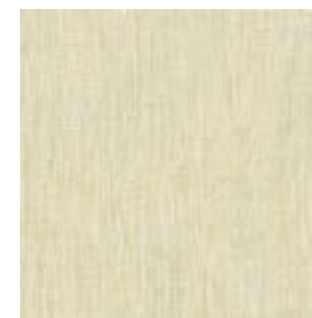
0013



0014



0015



0016



0017



PRICE CATEGORY
2

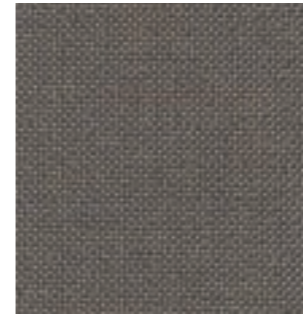
MANUFACTURER
Kvadrat

MATERIALS
75% Wool
17% Acrylic
8% Nylon

MARTINDALE
100.000

LIGHTFASTNESS
6

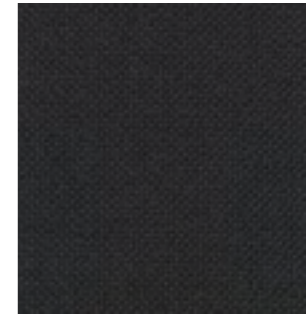
PILLING
4-5



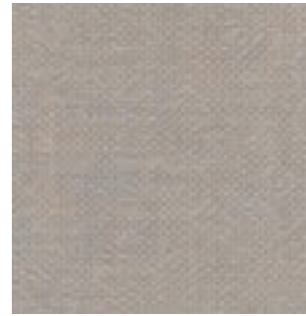
0127



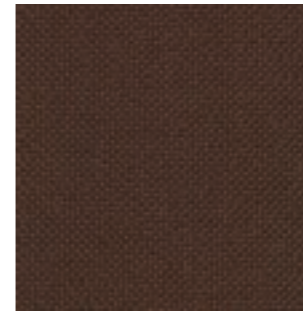
0147



0177



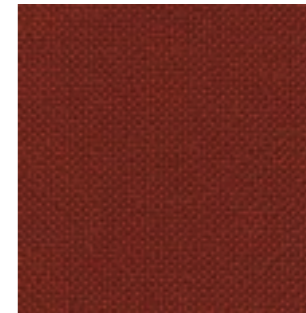
0227



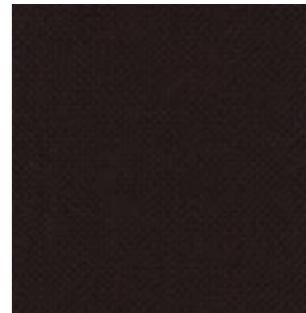
0347



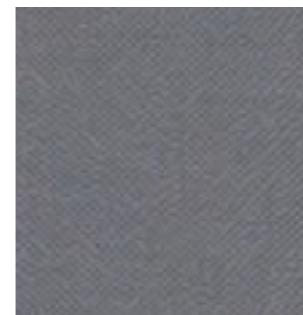
0397



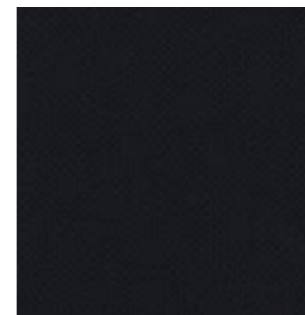
0657



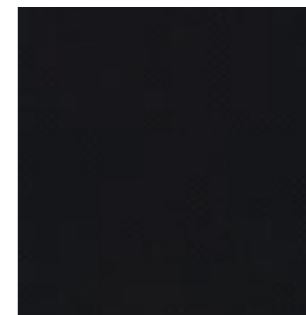
0677



0737



0787



0797



0987



PRICE CATEGORY
2

MANUFACTURER
Kvadrat

MATERIALS
92% New wool
8% Nylon

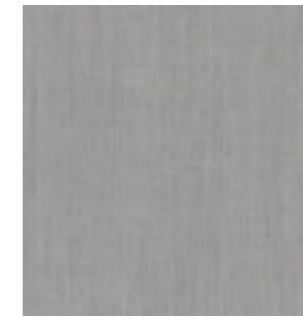
MARTINDALE
60.000

LIGHTFASTNESS
6

PILLING
4-5



101



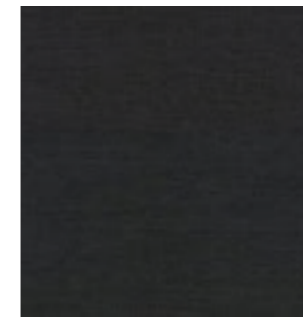
121



151



171



191



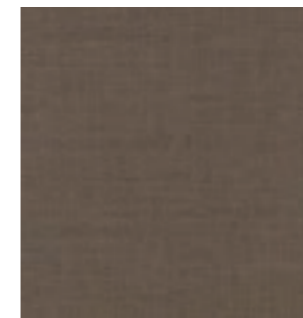
201



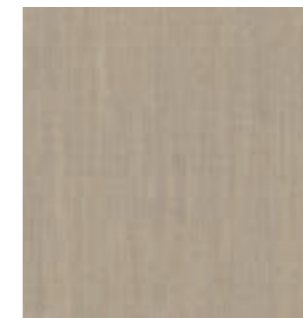
251



262



271



322



351



371



382



391



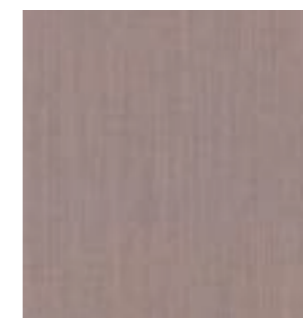
422



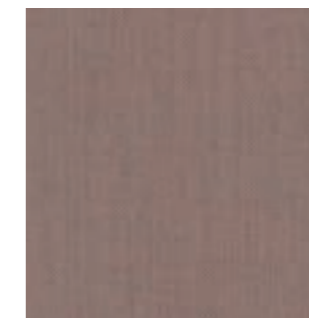
442



451



521



551



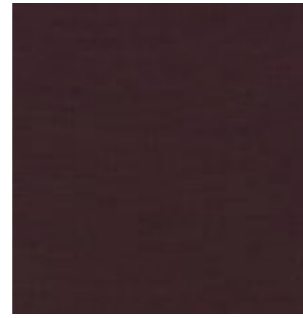
562



571



581



591



642



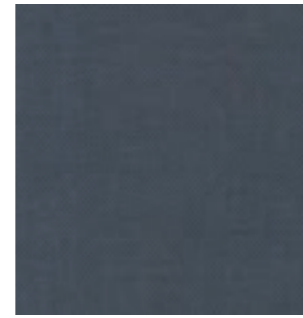
672



721



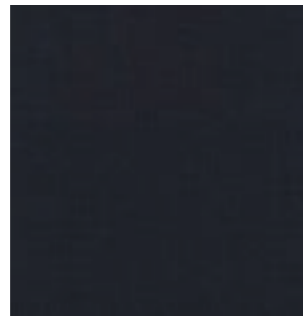
751



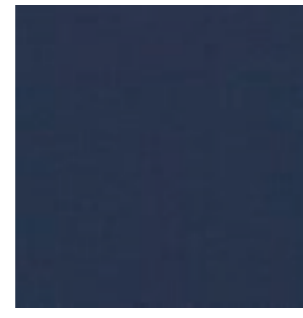
762



771



782



791



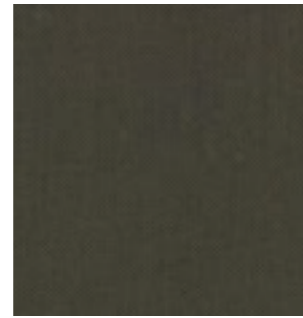
821



862



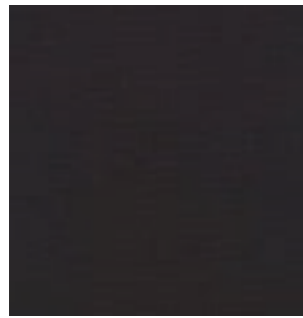
951



961



971

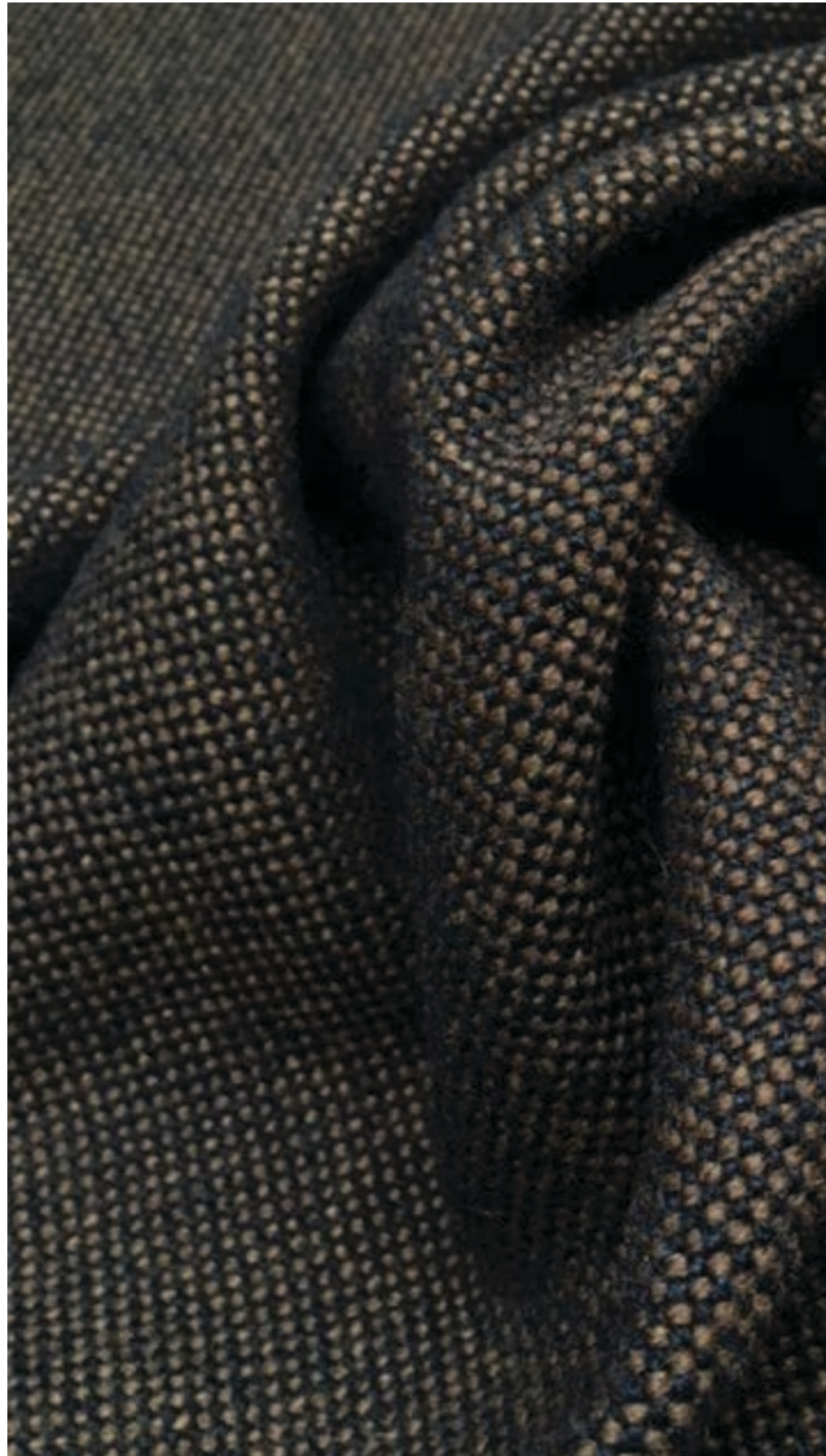


981



991

HALLINGDAL 65
by Kvadrat



PRICE CATEGORY
2

MANUFACTURER
Kvadrat

MATERIALS
70% New wool
30% Viscose

MARTINDALE
100.000

LIGHTFASTNESS
5-7

PILLING
3-4



0100



0103



0110



0113



0116



0123



0126



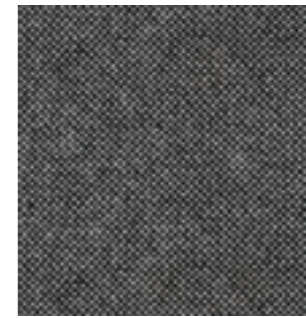
0130



0143



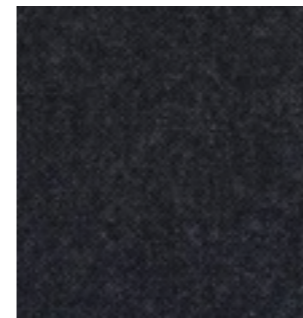
0153



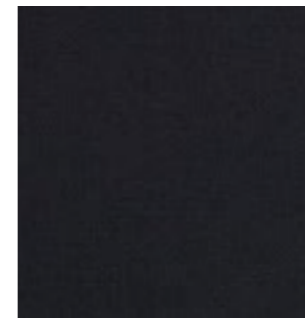
0166



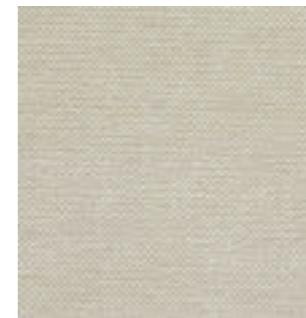
0173



0180



0190



0200



0220



0224



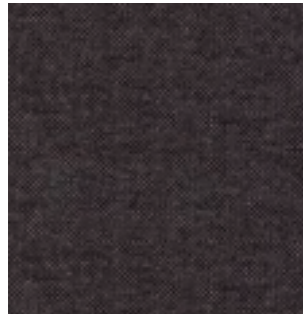
0227



0270



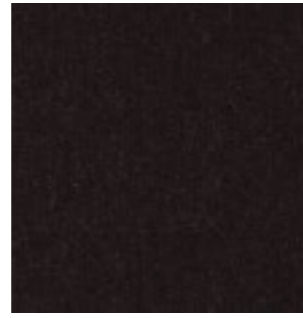
0350



0368



0370



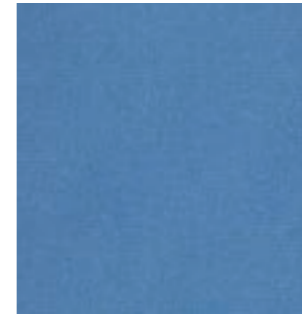
0376



0390



0702



0723



0733



0750



0407



0420



0457



0526



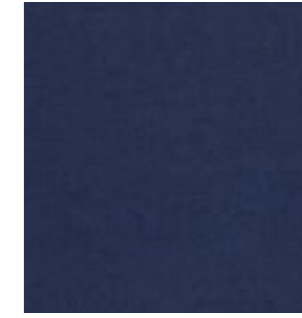
0753



0754



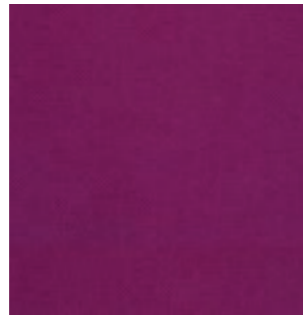
0763



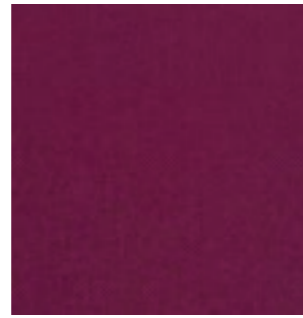
0764



0547



0563



0573



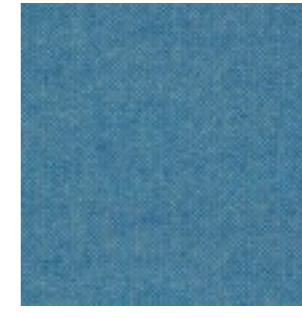
0590



0773



0810



0840



0850



0596



0600



0657



0660



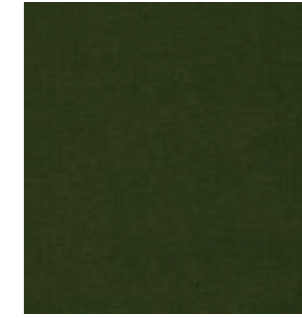
0890



0907



0944



0960



0674



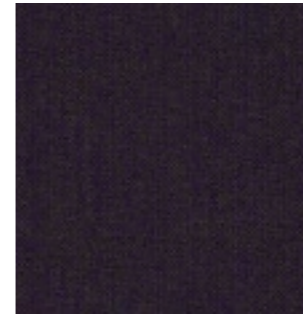
0680



0687



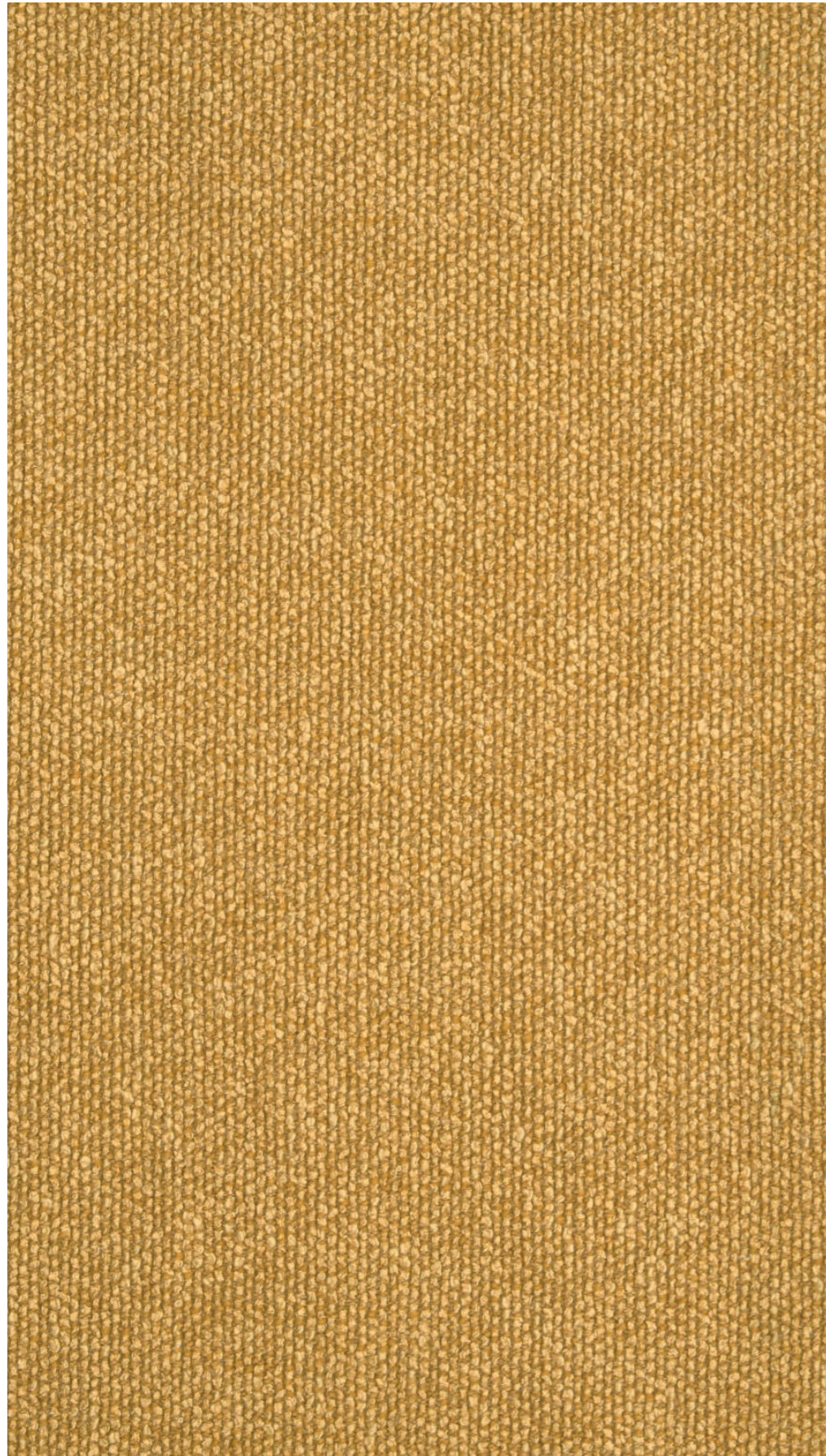
0694



0968



0980



PRICE CATEGORY
2

MANUFACTURER
Sahco

MATERIALS
52% Cotton
22% Viscose,
14% Acrylic
6% Linen
3% Polyester
3% Nylon

MARTINDALE
45.000

LIGHTFASTNESS
6-7

PILLING
4-5



0001



0002



0003



0004



0005



0006



0007



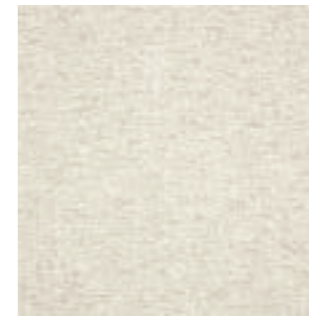
0008



0009



0010



0011



0012



0013



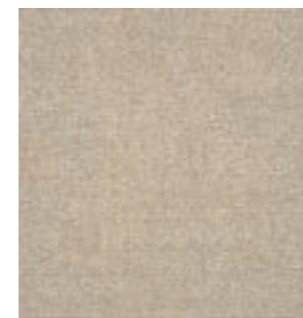
0014



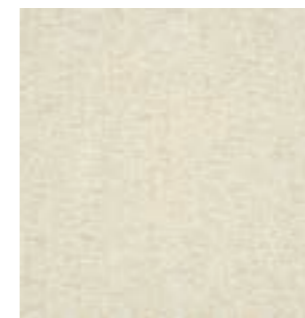
0015



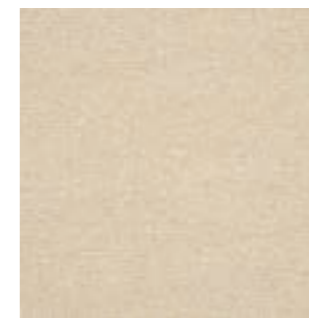
0016



0017



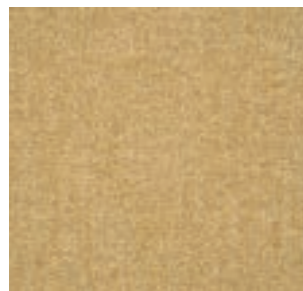
0018



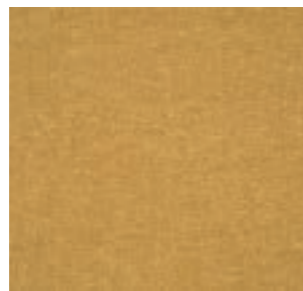
0019



0020



0021



0022

STEELCUT 2
by Kvadrat



PRICE CATEGORY
2

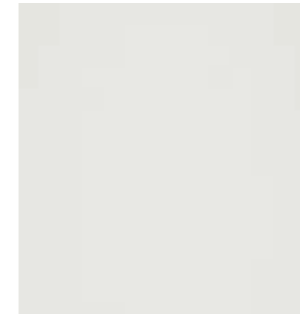
MANUFACTURER
Kvadrat

MATERIALS
90% New wool
10% Nylon

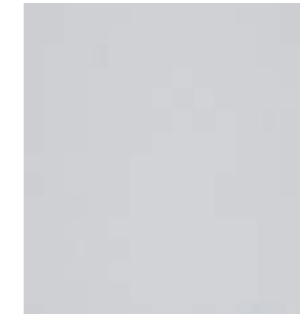
MARTINDALE
100.000

LIGHTFASTNESS
5-7

PILLING
3-4



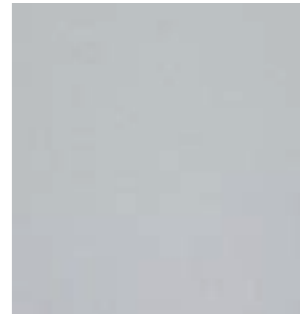
110



120



135



140



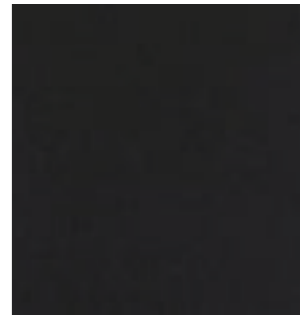
155



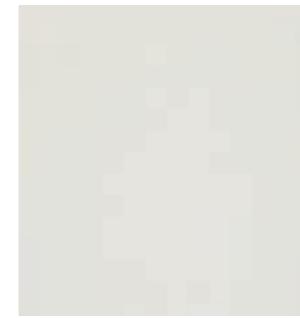
160



180



190



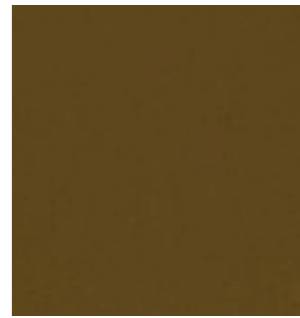
220



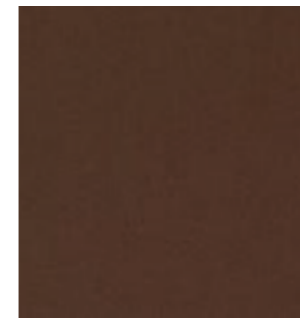
240



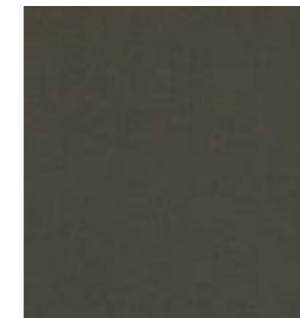
255



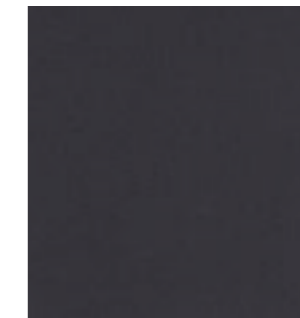
265



365



370



380



435



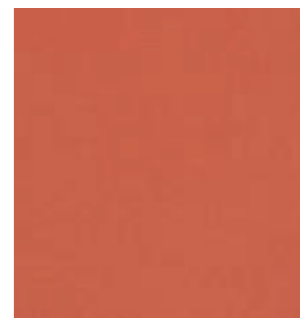
445



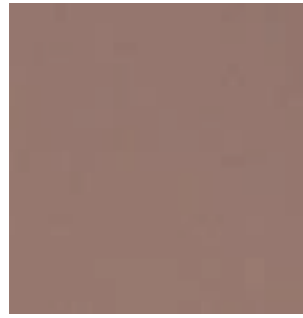
535



545



550



605



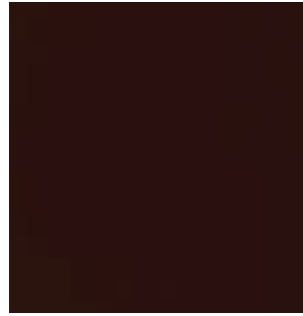
615



625



635



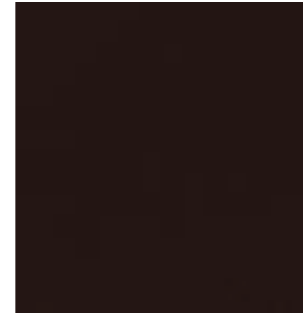
655



660



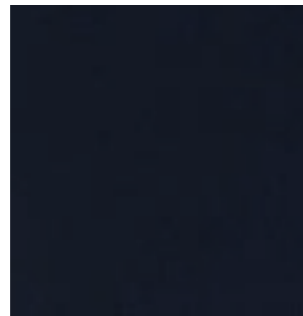
685



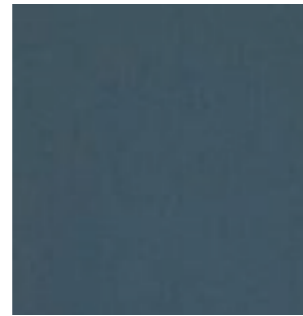
695



760



775



780



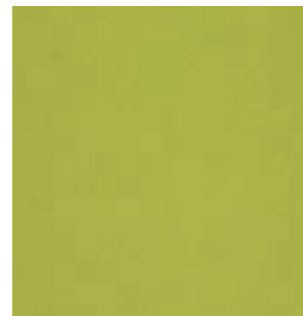
820



835



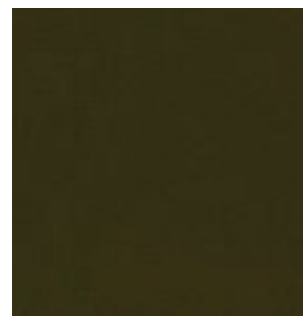
935



950



975



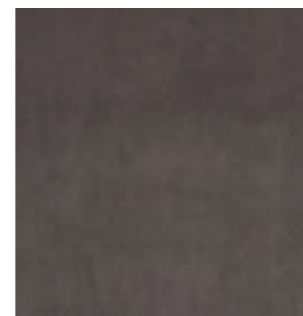
985



1122

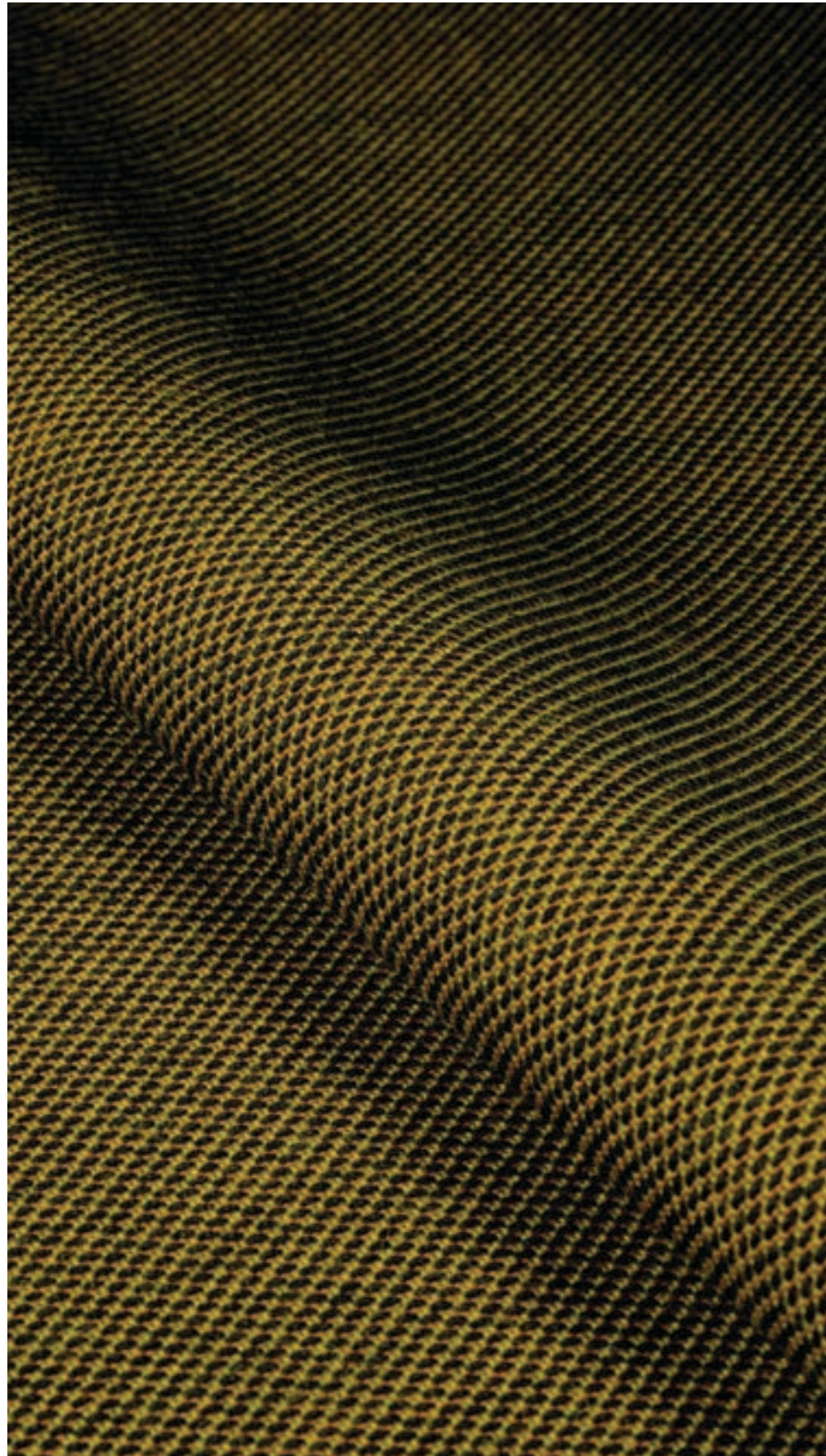


0917



1362

STEELCUT TRIO 3
by Kvadrat



PRICE CATEGORY
2

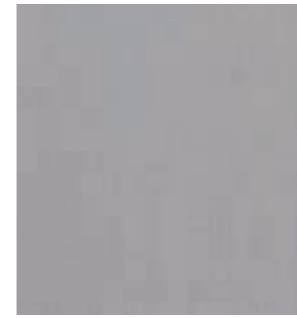
MANUFACTURER
Kvadrat

MATERIALS
90% New wool
10% Nylon

MARTINDALE
100.000

LIGHTFASTNESS
5-7

PILLING
4



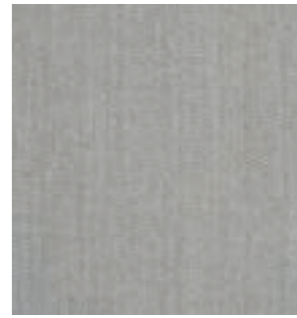
105



113



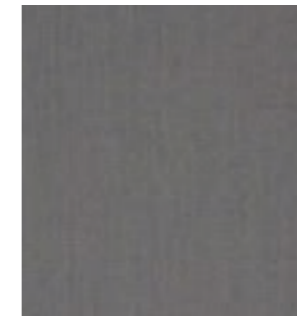
124



133



153



176



195



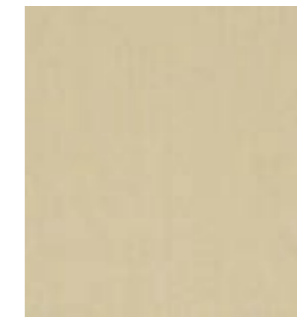
205



213



226



236



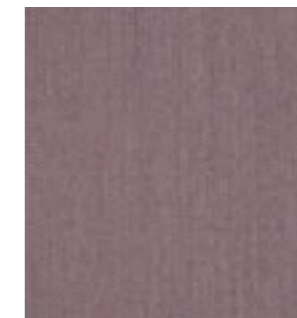
246



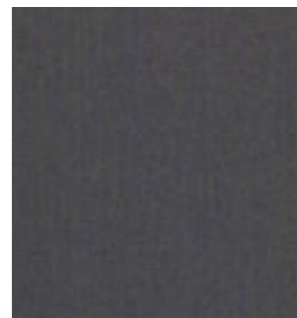
253



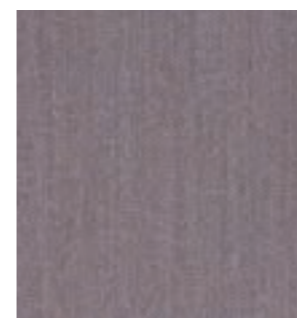
266



276



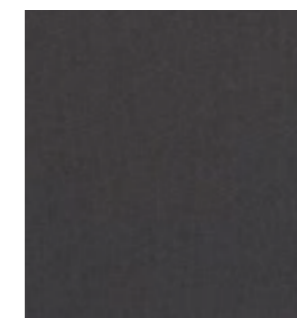
283



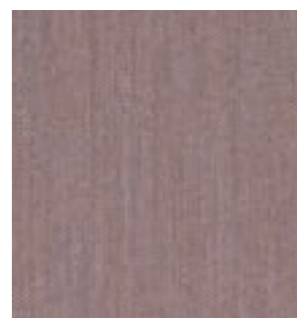
336



376



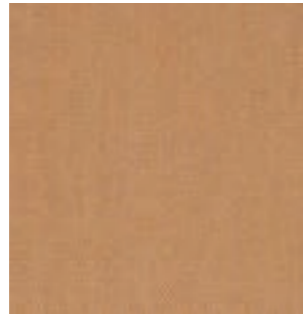
383



416



426



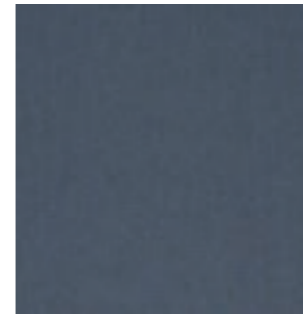
436



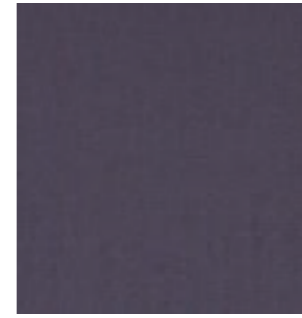
446



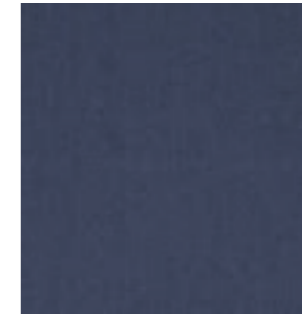
453



756



776



796



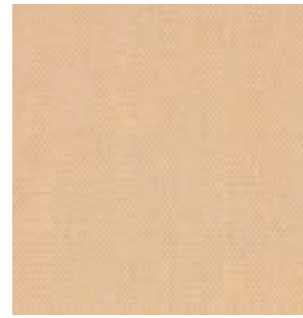
806



466



476



506



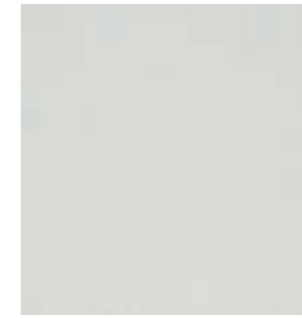
515



865



883



906



916



526



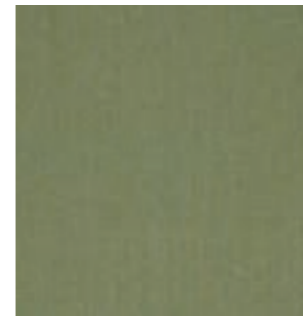
533



553



576



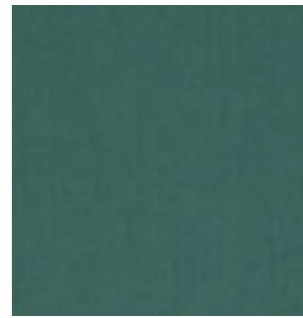
946



953



966



976



616



636



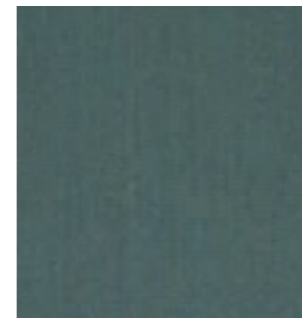
645



666



983



996



686



713



716



746

Textile Category 3



PRICE CATEGORY
3

MANUFACTURER
Sahco

MATERIALS
43% Viscose
17% Polyacrylic
15% New wool
9% Cotton
8% Linen
8% Polyester

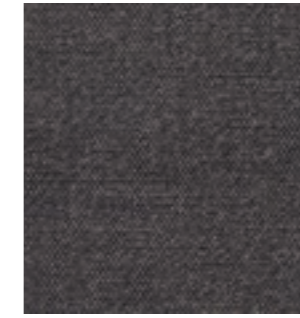
MARTINDALE
40.000

LIGHTFASTNESS
6

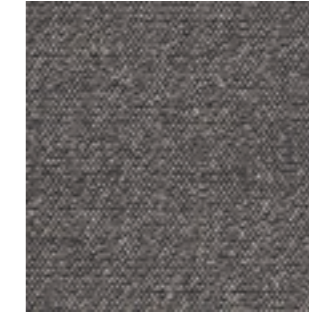
PILLING
3



001



002



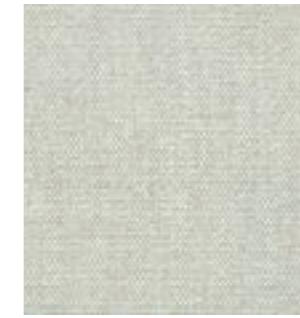
003



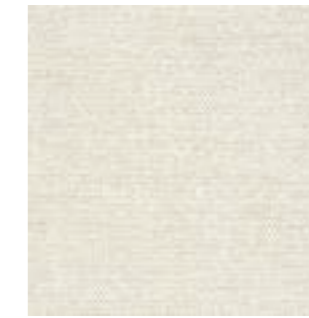
004



005



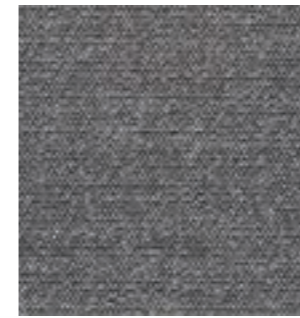
006



007



008



009



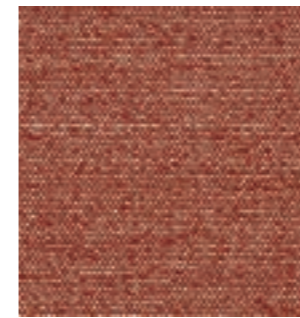
010



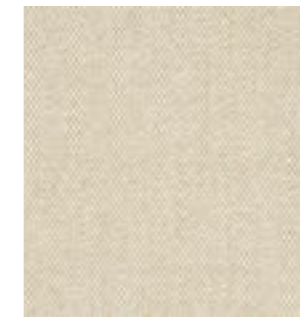
011



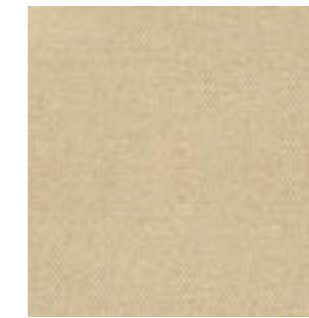
012



013



014



015



016



017

VIDAR 4
by Kvadrat



PRICE CATEGORY
3

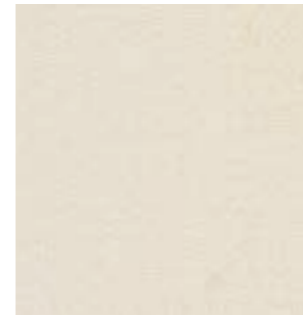
MANUFACTURER
Kvadrat

MATERIALS
94% New wool
6% Nylon

MARTINDALE
100.000

LIGHTFASTNESS
7 (ISO 1-8)

PILLING
4 (ISO 1-5)



0106



0123



0133



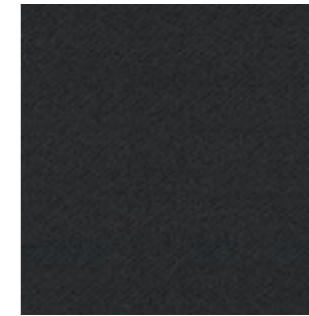
0143



0146



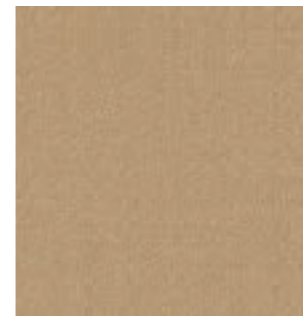
0152



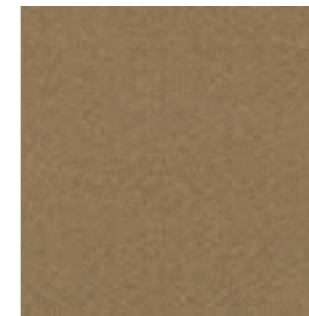
0182



0222



0323



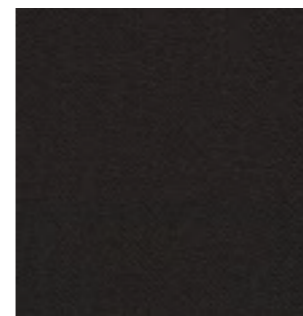
0333



0353



0363



0386



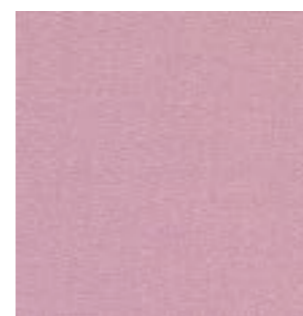
0443



0456



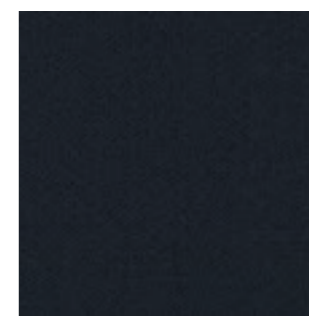
0472



0526



0542



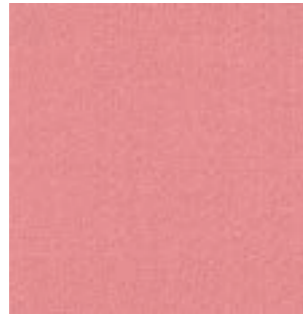
0554



0556



0582



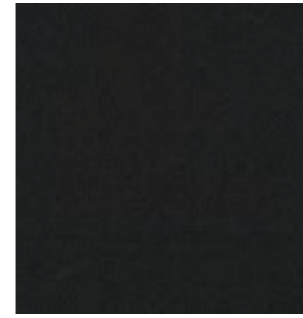
0622



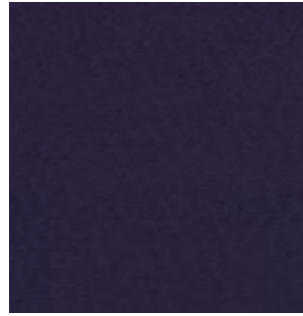
0633



0653



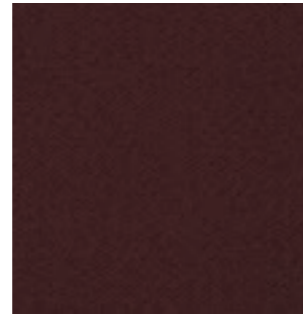
1880



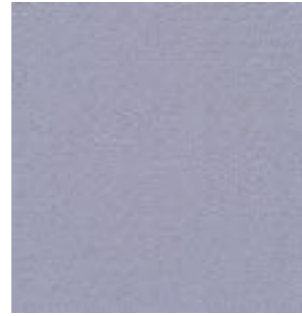
0656



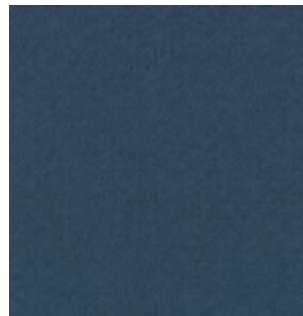
0676



0693



0723



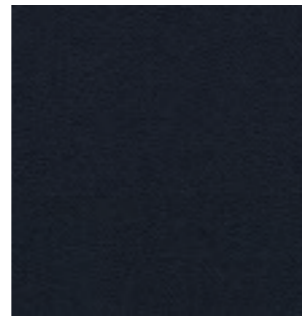
0733



0743



0772



0786



0872



0913



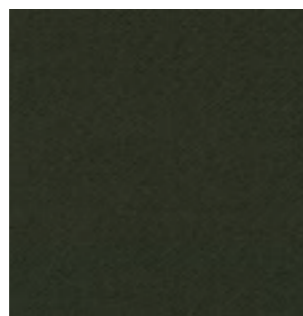
0932



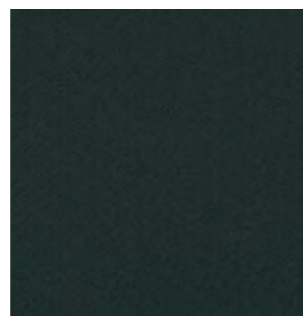
0943



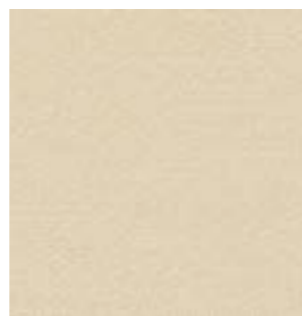
0956



0972



1062



1511

Textile Category 4

GRAND MOHAIR
by Danish Art Weaving



PRICE CATEGORY
4

MANUFACTURER
Danish Art Weaving

MATERIALS
100% Mohair

MARTINDALE
Being tested
(>200.000 Wyzenbeek)

LIGHTFASTNESS
4,5 (ISO 1-8)

PILLING
Being tested

CERTIFICATES
Oeko-Tex



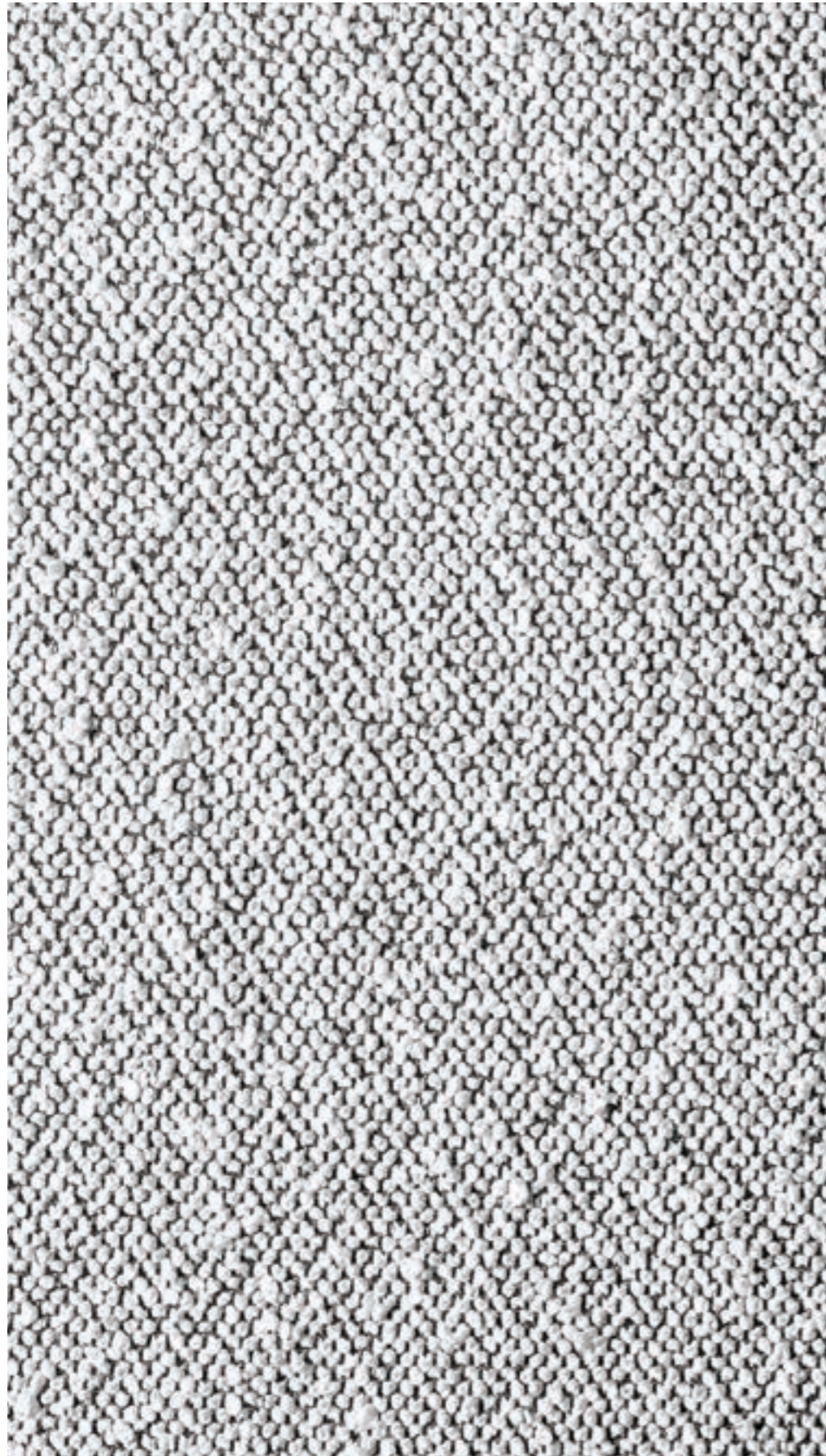
1103



2600



8205



PRICE CATEGORY
4

MANUFACTURER
Dedar

MATERIALS
72% Wool
27% Cotton
1% Polyamide

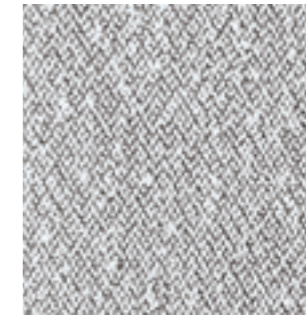
MARTINDALE
40.000



T19028_001



T19028_002



T19028_003



T19028_004



T19028_005



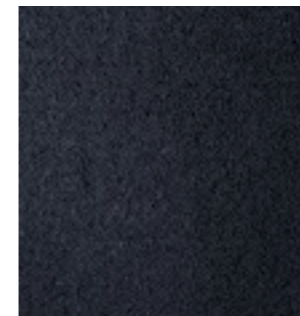
T19028_006



T19028_007



T19028_008



T19028_009

Leather

The Audo upholstery programme shows an overview of our textile and leather standard programme. All textile and leather collections are available in all colours.

Please note that the colour references are only intended as a guide. For further information please see manufacturer websites, or contact your local Audo sales representative.

Selection of textiles or leather outside of our upholstery programme, is subject to final testing and approval. Additional deliverytime may also occur.

SORENSENLEATHER.COM
NEVOTEX.COM



Use table to determine the upholstery options available
for fabric-covered items.

PRICE CATEGORY 1	AFTERROOM	BRASILIA	CO CHAIR	CONSTANCE CHAIR	HARBOUR CHAIR	HARBOUR LOUNGE CHAIR	INGEBORG	KNITTING CHAIR	MERKUR	MINGLE	MY OWN CHAIR	READY	THE TIRED MAN	VILHELM	THE PENGUIN	ELIZABETH	THE SEAL
DAKAR, NEVOTEX	•	•	•		•	•	◦	◦	•		◦	•	◦	◦	•	•	•
ULTRA, SØRENSEN LEATHER	•	•	•		•	•	◦	◦	•		◦	•	◦	◦	◦	◦	◦
ULTRA CRIB 5, SØRENSEN LEATHER	•	•	•		•	•	◦	•	◦		◦	•	◦	◦	◦	◦	◦
PRICE CATEGORY 2																	
DUNES, SØRENSEN LEATHER	•	•	•		•	◦	◦	◦	•		◦	•	◦	◦	•	•	•
NUANCE, SØRENSEN LEATHER	•	◦	•		•	◦	◦	◦	◦		◦	◦	◦	◦	◦	◦	◦
PRICE CATEGORY 3																	
ROYAL NUBUCK, SØRENSEN LEATHER	•	◦	•		•	•	◦	◦	◦		◦	◦	◦	◦	◦	◦	◦
SHEEPSKIN CURLY, SKANDILOCK				•			•			•	•		•	•			
SHEEPSKIN CURLY, NEVOTEX		•						•									
PRICE CATEGORY 4																	
ELEGANCE, SØRENSEN LEATHER	•	◦	•		•	◦		◦			◦		◦		•	•	•

- TESTED AND APPROVED.
- NOT TESTED YET, BUT POSSIBLE TO TEST

Leather Category 1



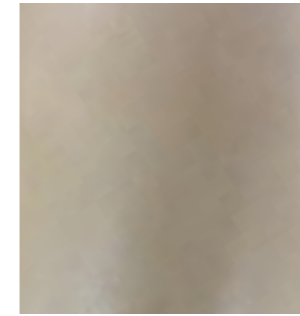
PRICE CATEGORY
1

MANUFACTURER
Nevotex

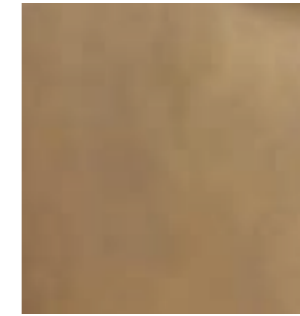
MATERIALS
Aniline leather

THICKNESS
0.9 – 1.1 mm

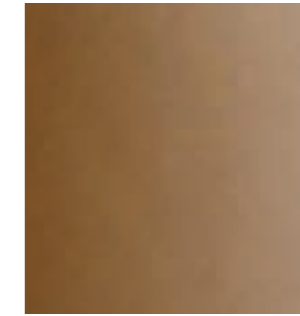
CERTIFICATE
OEKO-TEX®



0197 TAN



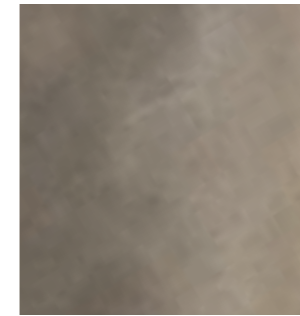
0229 CHESTNUT



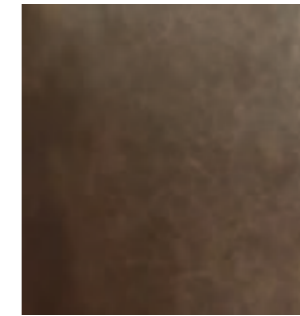
0250 COGNAC



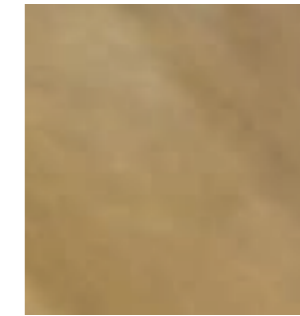
0258 SOIL



0311 ANTILOP



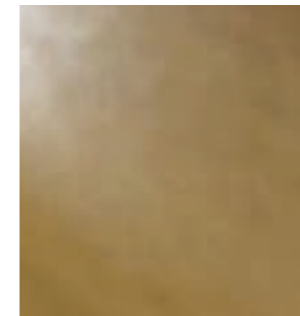
0329 BROWN



0549 DUNE



0550 YELLOW



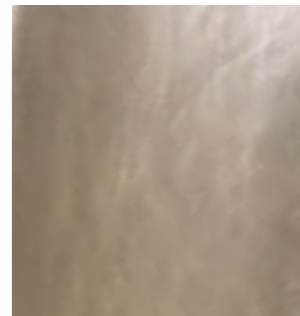
0551 WHISKY



0565 ORANGE



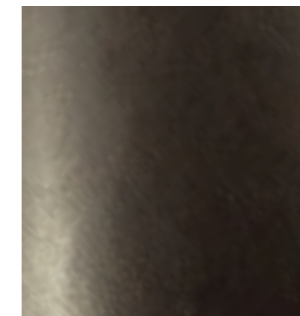
0681 DARK GREEN



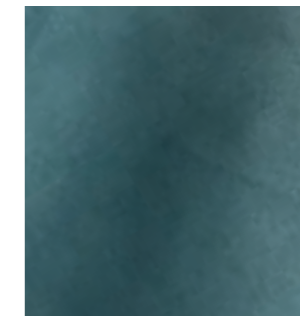
0691 TERRAGON



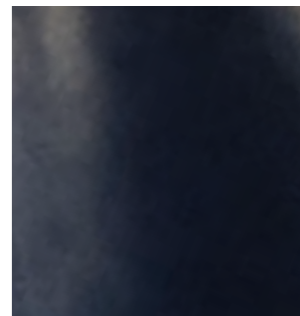
0692 LIGHT GREEN



0738 AUBERGINE



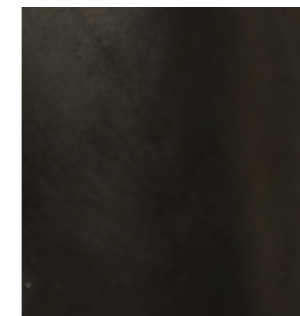
0778 TURKIS



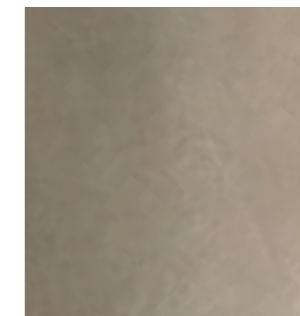
0779 DEEP BLUE



0780 DARK GREY



0842 BLACK



0854 GREY



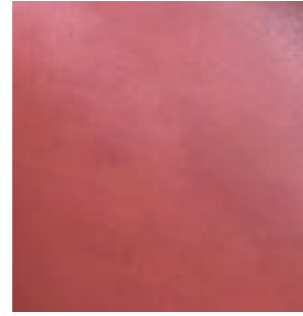
0855 GRAYSHADOW



01015 WHITE



03009 CIOOCO



04009 PARROT



04010 POT-PORRY



04060 PURPLE



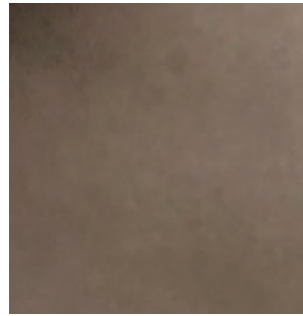
04109 RED



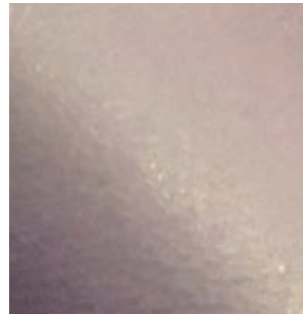
04147 DARK RED



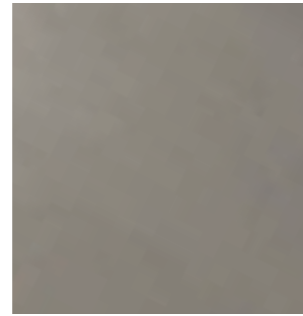
06013 GREEN



06048 PEATMOOS



07008 DARK PURPLE



08079 LIGHT GREY



PRICE CATEGORY
1

MANUFACTURER
Sørensen Leather

MATERIALS
Protected leather

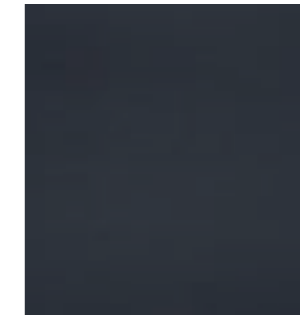
THICKNESS
0.9 – 1.1 mm



BLACK - 41599



BLACK BROWN - 41590



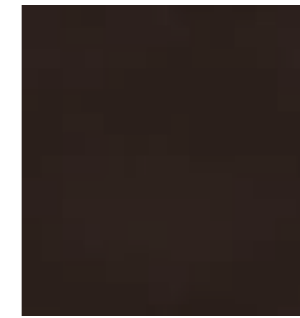
NAVY - 41573



ANTHRAZITE - 41580



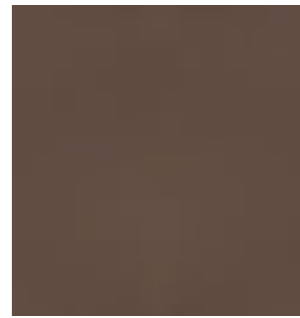
LAVA - 41575



CHOCOLATE - 41589



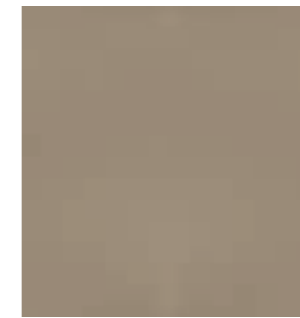
GREY - 41585



SAFARI - 41586



EARTH - 41584



ALTWEISS - 41576



EGGSHELL - 41581



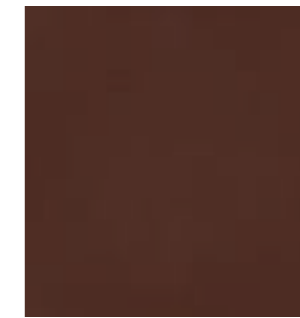
WHITE - 41594



BRICK - 41579



POPPY - 41578



COGNAC - 41598



BRANDY - 41574



CAMEL - 41571



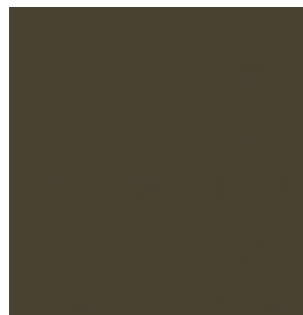
HONEY - 41572



LEAF - 41566



MARSH - 41570



MOSS - 41569



OAT - 41568



SMOKE - 41567

ULTRA CRIB 5
by Sørensen Leather



PRICE CATEGORY
1

MANUFACTURER
Sørensen Leather

MATERIALS
Protected leather

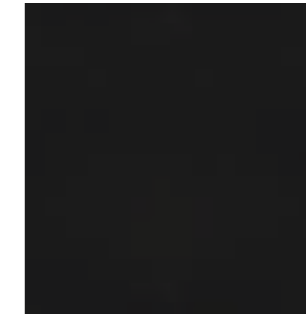
THICKNESS
0.9 – 1.1 mm



41610



41615



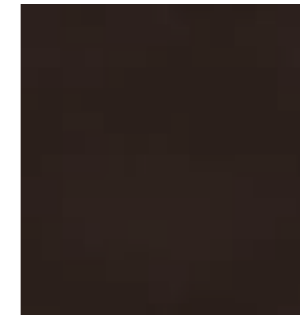
41616



41612



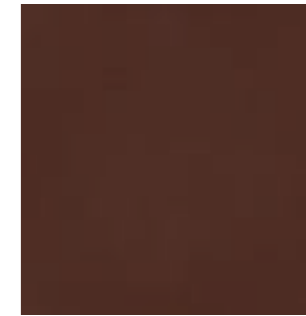
41611



41614



41617



41613

Leather Category 2

DUNES
by Sørensen Leather



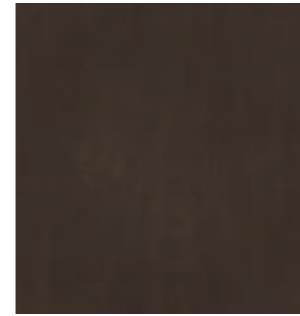
PRICE CATEGORY
2

MANUFACTURER
Sørensen Leather

MATERIALS
Aniline leather

THICKNESS
1.1 – 1.3 mm

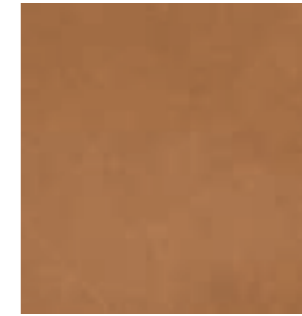
CERTIFICATE
Nordic Swan Ecolabel



DARK BROWN - 21001



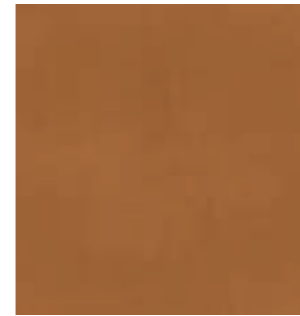
RUST - 21002



CAMEL - 21004



ANTHRAZITE - 21003



COGNAC - 21000



RACING GREEN - 21005



GREY - 21007

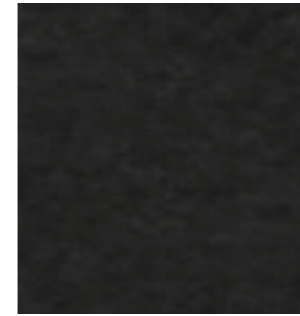


PRICE CATEGORY
2

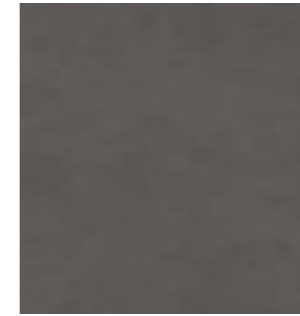
MANUFACTURER
Sørensen Leather

MATERIALS
Protected leather

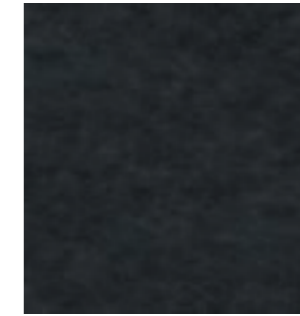
THICKNESS
1.1 – 1.3 mm



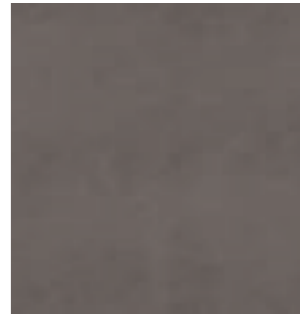
SHADOW GREY - 40780



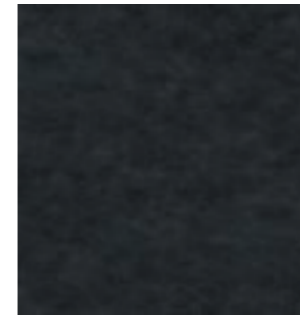
EARTHY GREY - 40781



HEAVENLY GREY - 40781



SMOKED GREY - 40784



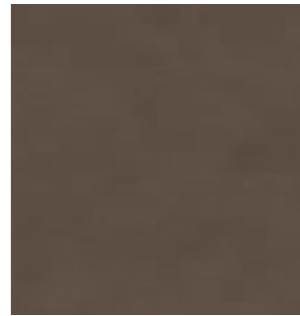
BURNED GREY - 40783



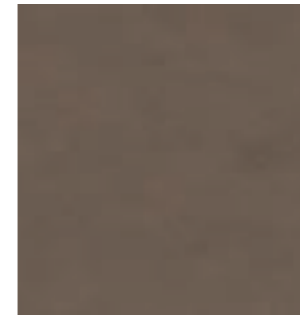
LIGHT GREY - 40782



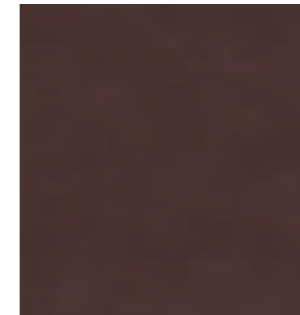
DARK GREEN - 40787



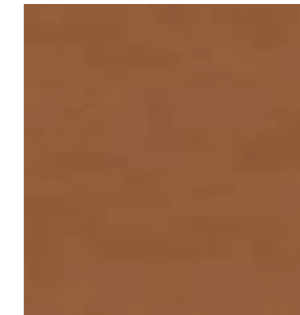
DARK BROWN - 40791



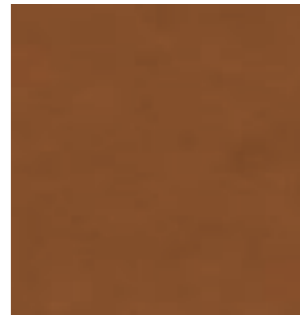
CINNAMON - 40788



BURGUNDY - 40789



WALNUT - 40790



RUST - 40786

Leather Category 3

ROYAL NUBUCK
by Sørensen Leather

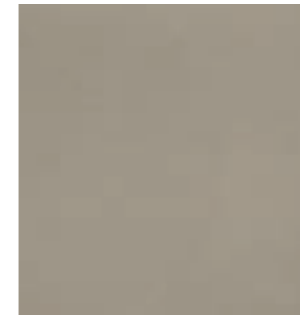


PRICE CATEGORY
3

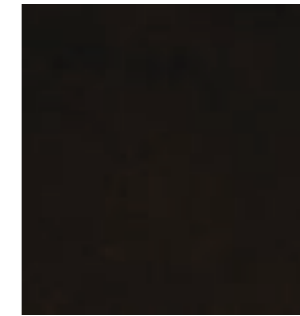
MANUFACTURER
Sørensen Leather

MATERIALS
Aniline leather

THICKNESS
1.2 – 1.6 mm



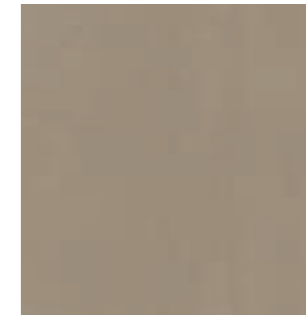
MINERAL - 30251



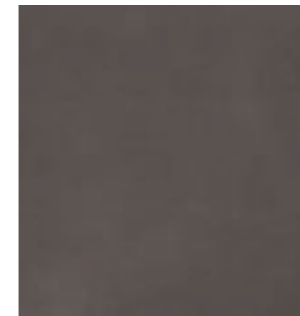
HAVANNA - 30258



STONE - 30255



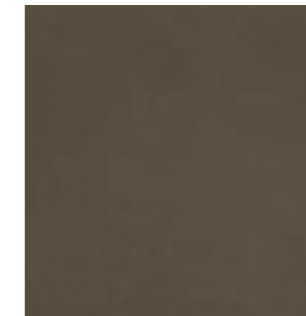
OFF-WHITE - 30252



LAVA - 30254



CINNAMON - 30257



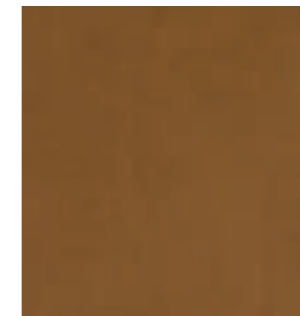
ALMOND - 30256



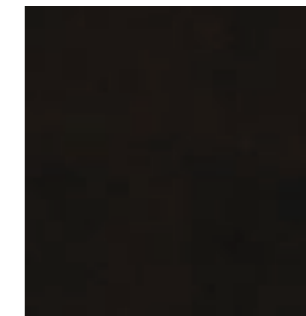
LIGHT GREY - 30250



ECRU - 30253



COGNAC - 30260



BLACK - 30259

SHEEPSKIN
by Skandilock

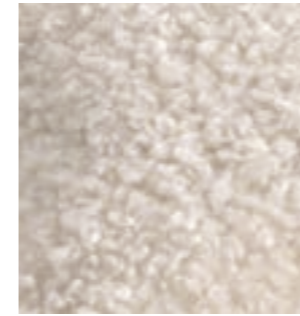


PRICE CATEGORY
3

MANUFACTURER
Skandilock

MATERIALS
Sheepskin

THICKNESS
17 mm



OFF WHITE



SAHARA



MOONLIGHT



HONEY



ESPRESSO



GREEN TEA



PRICE CATEGORY
3

MANUFACTURER
Nevotex

MATERIALS
Sheepskin

THICKNESS
17 – 21mm



NATURE



SAHARA



ROOT

Leather Category 4



PRICE CATEGORY
4

MANUFACTURER
Sørensen Leather

MATERIALS
Aniline leather

THICKNESS
1.2 – 1.4 mm



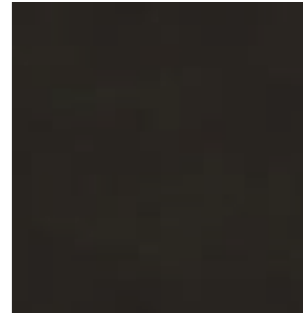
BLACK - 20198



INDIAN RED - 20193



WALNUT - 20195



MOCCA - 20197

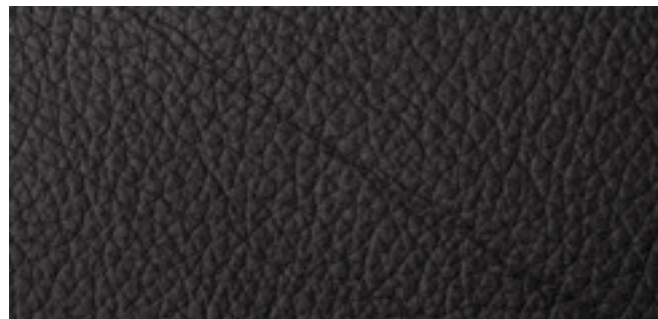
Individual and unique markings may appear on the leather and should not be considered as defects.



FAT WRINKLES



SCAR / INSECT BITES



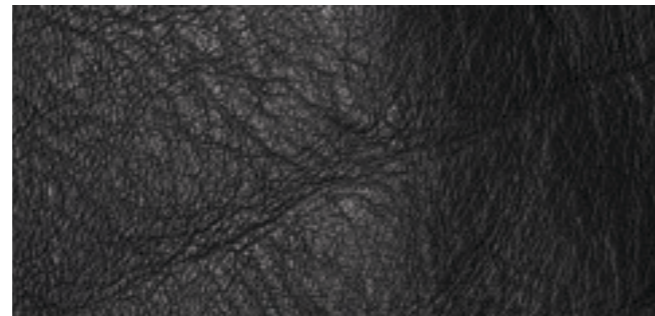
FOLDS



BUTCHING SCAR



HEALED SCARS



FAT WRINKLES

