

LED RETROFIT KIT 115W

C&C Lighting Inc. Technical Data Sheet





- UL, cUL, DLC certificate
- PHILIPS LUMILEDS chip, high CRI
- 90x150°, TYPE III
- Internal driver, input voltage 100-277V AC
- E39, EX39 lamp base
- Lamp Base : 270° rotated
- Single SUNON fan
- New style and high efficient wide-range input
- Long lifespan and good heat dissipation
- Direct replacement for Metal Halide, easy installation
- Fits many different fixtures to replace traditional lamps

TECHNICAL SPECIFICATION

PRODUCT NAME	LED Retrofit Kit	
PART NUMBER	CCR-CLH-115W1A1-E	CCR-CLH-115W1A1-EX
DIMENSION	E39	EX39
COLOUR	297x138x87mm	300x138x87mm
CCT	4000K 5000K 5700K	
CRI	>70	
LUMEN	12500-13500Lm	
EFFICACY	108-118Lm/W	
POWER	115W	
VIEWING ANGLE	90x150° (Type III)	
VOLTAGE	100-277V AC 50/60Hz	
PFC	>0.9	
EQUIVALENT	120W CFL, 175W MHL/HPS/HID	
WATERPROOF RATING	IP51	
LED	196pcs PHILIPS LUMILEDS Luxeon 3030 2D (1.5W)	
HOUSING	Magnesium Alloy, AL, PC / Black & Silver	
OPERATING ENVIRONMENT	-20~45° @ 20~70% RH	
STORAGE ENVIRONMENT	-30~80° @ 10~75% RH	
APPLICATION	Replacement lamps for outdoor pole or arm-mounted area and roadway luminaries	
CERTIFICATION	UL cUL DLC	
WARRANTY	5 years	
NET WEIGHT		



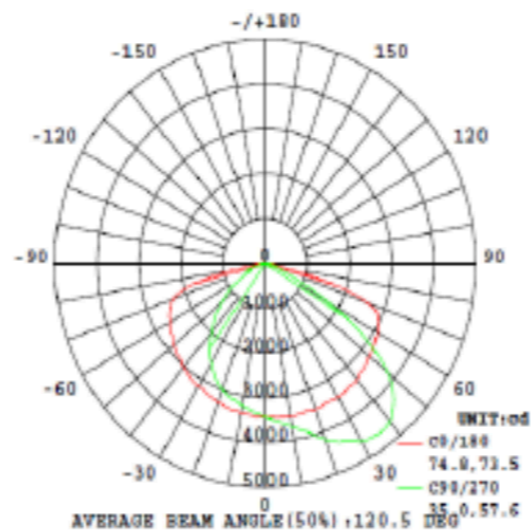
APPLICATION

- Replacement lamps for outdoor pole and arm-mounted area and roadway luminaires (type B)

DIMENSIONS

DATA OF LAMP		PHOTOMETRIC DATA			
MODEL		Imax (cd)	4765	S/MH(C0/180)	1.40
NOMINAL POWER (W)	115	LOR(%)	100.0	S/MH(C90/270)	1.14
RATED VOLTAGE (V)	120	TOTAL FLUX (lm)	12819	η UP, DN (C0-180)	0.1, 63.9
NOMINAL FLUX (lm)	12819.3	CIE CLASS	DIRECT	η UP, DN (C180-360)	0.1, 35.9
LAMPS INSIDE	1	η up (%)	0.2	CIBSE SHR NOM	1.50
TEST VOLTAGE (V)	120.0	η down (%)	99.8	CIBSE SHR MAX	1.55

LUMINOUS INTENSITY DISTRIBUTION DIAGRAM



Flux out: 6576 lm

Height	Eavg, Emax	Angle: 91.38deg	Diameter
1m	1952, 3545lx		204.89cm
2m	488.0, 886.2lx		409.78cm
3m	216.9, 393.9lx		614.67cm
4m	122.0, 221.6lx		819.56cm
5m	78.08, 141.8lx		1024.45cm
6m	54.22, 98.47lx		1229.35cm
7m	39.84, 72.35lx		1434.24cm
8m	30.50, 55.39lx		1639.13cm
9m	24.10, 43.77lx		1844.02cm
10m	19.52, 35.45lx		2048.91cm

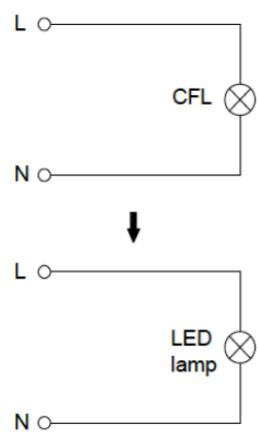
Note: The Curves indicate the illuminated area and the average illumination when the luminaire is at different distance.



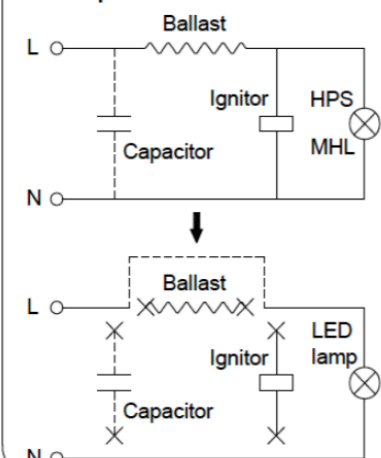
NOTICE FOR USER

- Please turn off power before install or change assembly parts
- The input voltage and lamps should be matched. After connecting the power line, make sure the wiring section is insulated
- Suitable for damp locations
- Do not use with dimmers
- Suitable for use in enclosed luminaires, min.lamp compartment dimension is 420x210x210mm
- Must be installed and disassembled only by professionals

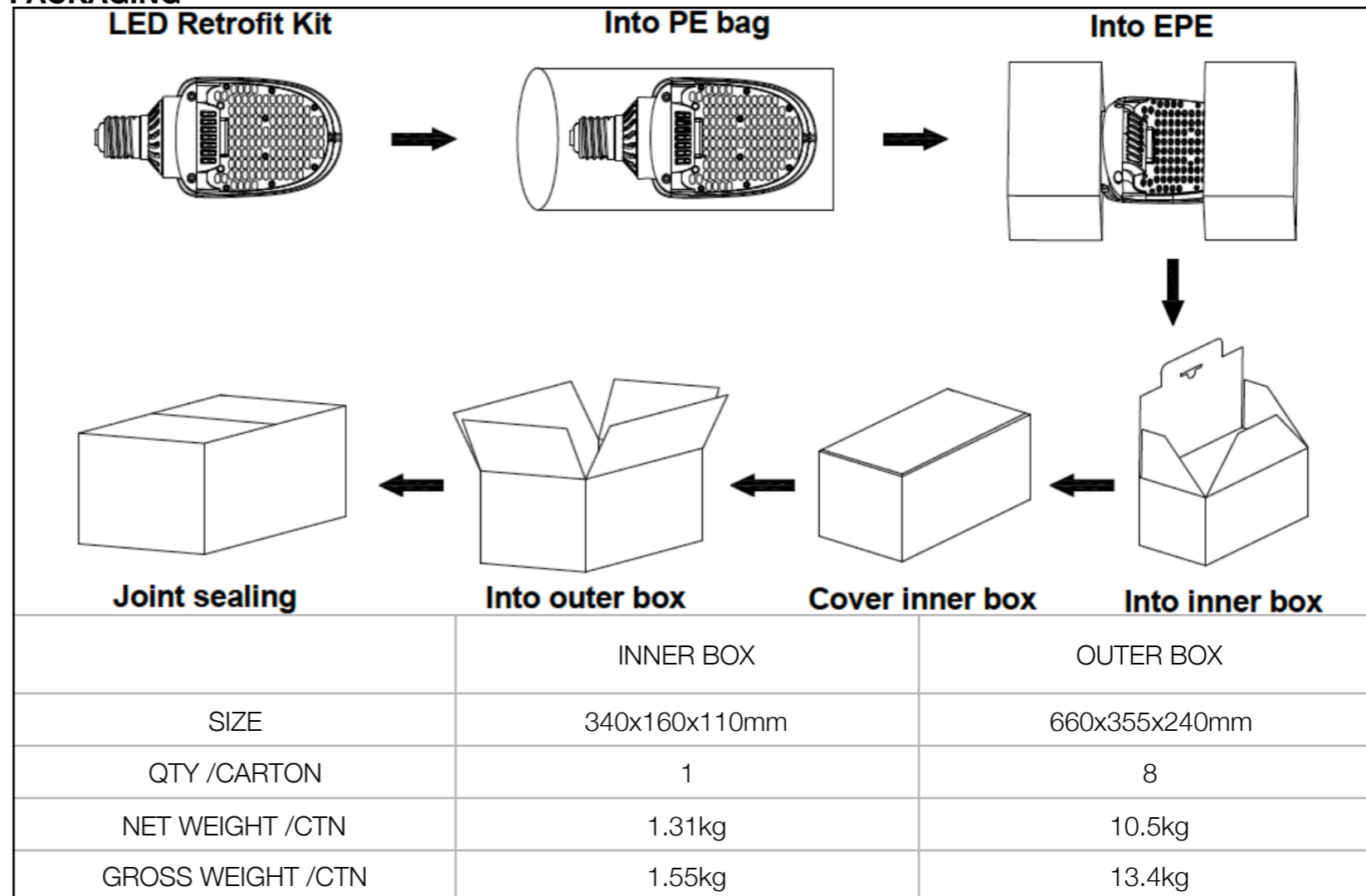
Replace CFL



Replace MHL / HPS



PACKAGING

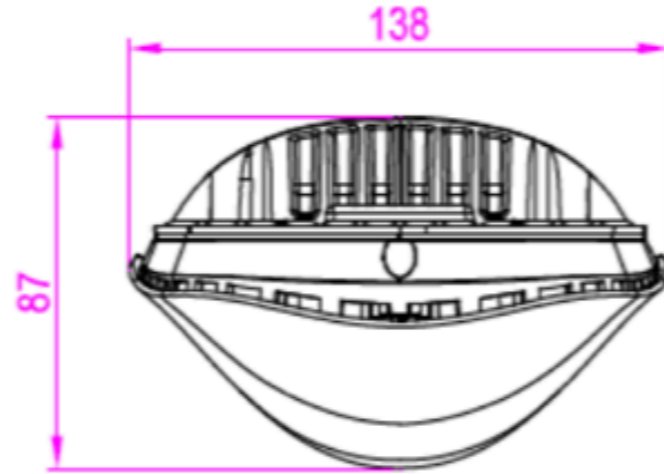


TROUBLE SHOOTINGS

FLICKERING OF THE LIGHT	Turn off the power and turn on again in 3 minutes. If same problem occurs call agencies.
OUT OF WORKING	Check the connection



E39



EX39

