



C&C LIGHTING inc.

# COMMERCIAL PRODUCT HIGHLIGHTS 2019

*Efficient, practical and sustainable LED lighting solution*

ETOBICOKE MARKHAM  
WOODBRIIDGE VAUGHAN



## COMMERCIAL LIGHTS

### INDOOR FIXTURES

High Bay Lights

Shop Lights

Canopy Lights

Exit Signs / Emergency Lights

### OUTDOOR FIXTURES

Wall Pack Lights

Flood Lights

Street Lights

Shoe Box Lights

Pillars Lights

Wall Scones

### RETROFIT KITS

T8 / T5

Retrofit Kits

Corn Bulbs

LED Strips

[www.ccrled.com](http://www.ccrled.com)

1 - 155 Winges Rd. Woodbridge L4L 6C7  
905-856-0903

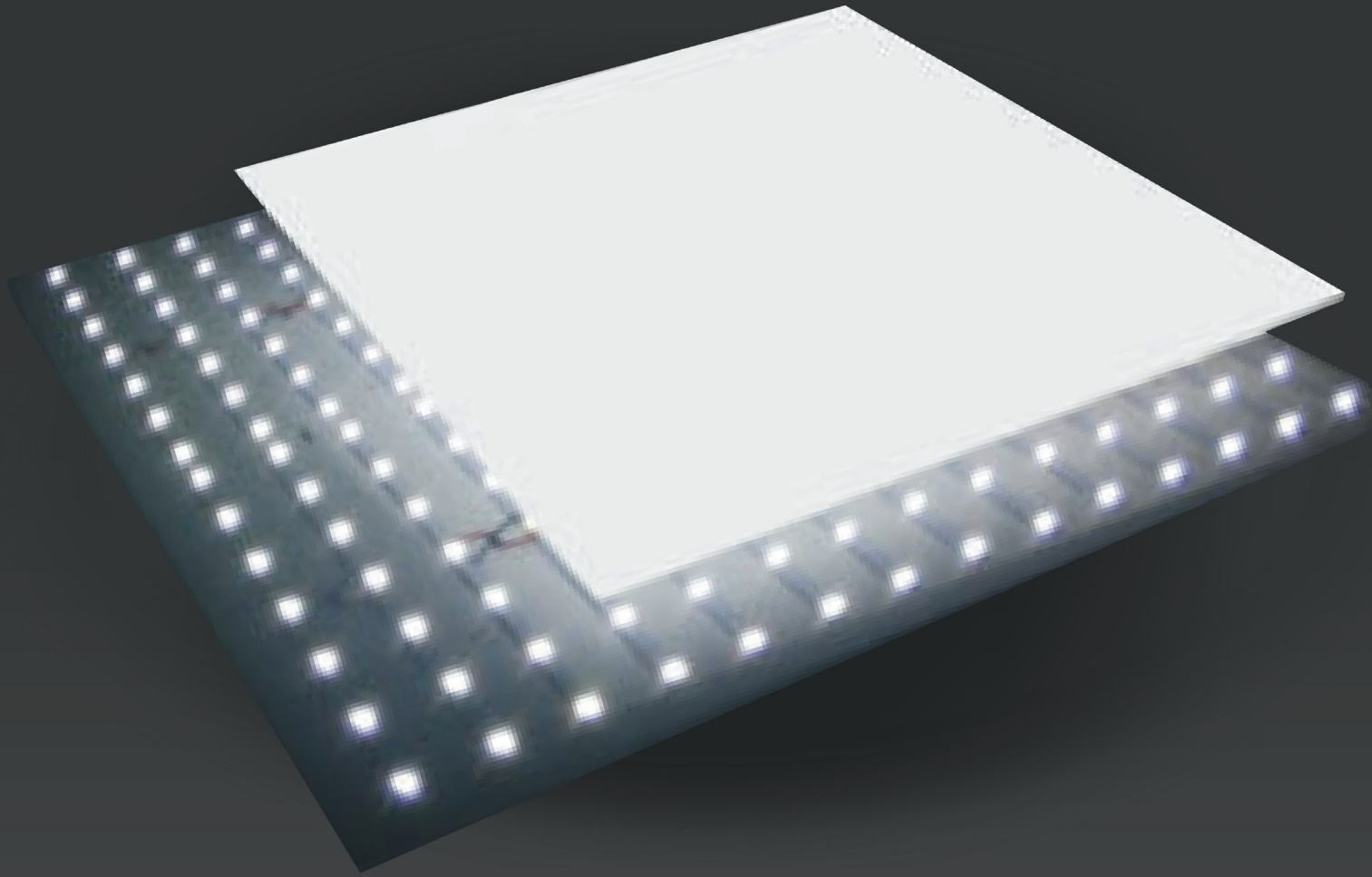
64 - 7250 Keele St. Vaughan L4K 1ZB  
647-887-7403

11 - 400 Esna Park Dr. Markham L3R 3K2  
905-604-6809

2 - 91 Esna Park Dr. Markham L3R 2S2  
905-604-0143



# 2x2' LED FLAT PANEL



## PMMA LENS

more energy saving

## ANTI-STROBE

eyesight protection

## BACK-LIT

25% brighter

## DIMMABLE

with regular dimmer

## Mounting Solutions



- Eliminating strobe of traditional LED lighting, our Advanced LED Flat Panel is suitable for studying and working environment as it protects the eyesights of its users. It reduces tiredness over long period of exposure.
- PMMA lens and Back lit LED light source makes our light 25% brighter in comparison to older models.
- 20% more energy saving compared to previous panel lighting.
- Dimmable by regular dimmer, no longer need of high-cost 0-10 V special dimmer.

**C&C LIGHTING INC**



# COMMERCIAL LIGHTS



## [1] UFO HIGH BAY LIGHT

**POWER** 60W 80W 100W 150W 200W  
**VOLTAGE** 100-277V / 220V / 90-305V  
**LUMEN OUTPUT** 10538-26000Lm  
**CCT** 3000-6000K  
**DIMENSION** varies  
**CERTIFICATION** CE ETL FCC RoHS / IP65



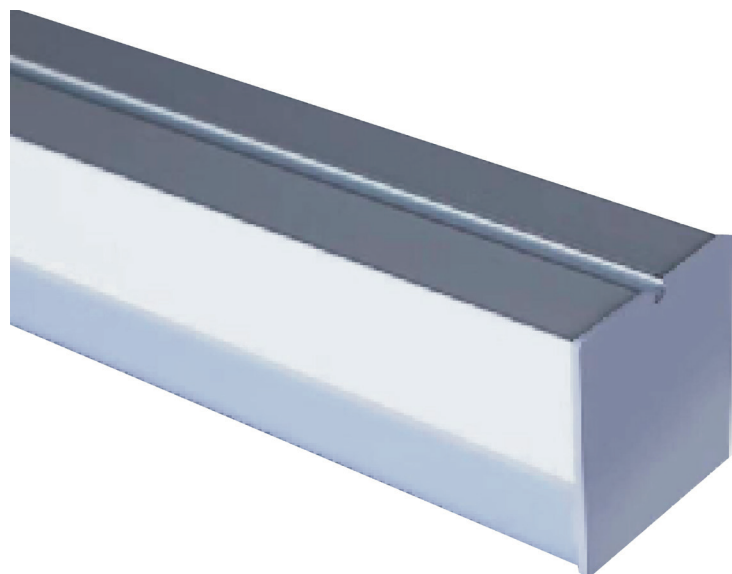
## [2] LINEAR HIGH BAY LIGHT

**POWER** 110W 160W 220W 260W 320W  
**VOLTAGE** 100-270V  
**LUMEN OUTPUT** 14000-42000Lm  
**CCT** 3000-5000K  
**DIMENSION** 610x240x45mm / 1220x320x45mm  
**CERTIFICATION** DLC ETL IES / IP44



## [3] LINEAR FIXTURE WITH 4" T8 FITTING

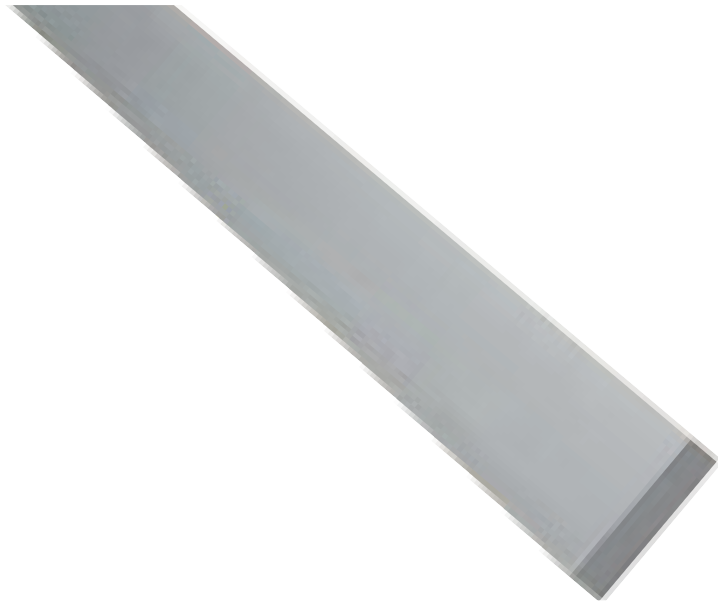
**POWER** 54W  
**VOLTAGE** 100-240V / 100-380V  
**LUMEN OUTPUT** 6480Lm  
**CCT** 3000-6000K  
**LENGTH** 2FT 4FT 8FT  
**CERTIFICATION** ETL DLC GS / IP40



## [4] LINEAR PENDANT LIGHT

**POWER** 54W  
**VOLTAGE** 100-240V / 100-380V  
**LUMEN OUTPUT** 6480Lm  
**CCT** 3000-6000K  
**LENGTH** 2FT / 4FT / 6FT / 8FT  
**CERTIFICATION** ETL DLC GS / IP40





### [5] TOP & BOTTOM LIT OFFICE LINEAR FIXTURE 8FT

**POWER** 100W  
**VOLTAGE** 100-240V / 100-380V  
**LUMEN OUTPUT** 6480Lm  
**CCT** 3000-6000K  
**LENGTH** 2FT / 4FT / 6FT / 8FT  
**CERTIFICATION** ETL DLC GS / IP40



### [6] VAPOR TIGHT SHOP LIGHT

**POWER** 24W 30W 40W 50W 60W 80W  
**VOLTAGE** 120V / 277V / 100-240V  
**LUMEN OUTPUT** 2400-8800Lm  
**CCT** 2800-3500K / 3800-4500K / 5500-6500K  
**LENGTH** 2FT / 4FT / 5FT  
**CERTIFICATION** FCC ETL DLC CE RoHS / IP65



### [7] 4FT T8 TUBE

**POWER** 9-15W  
**VOLTAGE** 100-265V  
**LUMEN OUTPUT** 990-2880Lm  
**CCT** 3000-6000K  
**LENGTH** 4FT  
**CERTIFICATION** DLC UL RoHS



### [8] 8FT T8 TUBE

**POWER** 36W  
**VOLTAGE** 100-277V  
**LUMEN OUTPUT** 3900Lm  
**LENGTH** 8FT  
**CERTIFICATION** UL





## COMMERCIAL LIGHTS



### [9] V-SHAPE INTEGRATED T8 FIXTURE

**POWER** 30W 36W 60W 72W  
**VOLTAGE** 100-277V  
**LUMEN OUTPUT** 3600-7920Lm  
**CCT** 3000-6500K  
**LENGTH** 4FT 8FT



### [10] 4FT T5 TUBE

**POWER** 9W 15W 18W 23W  
**VOLTAGE** 85-277V  
**LUMEN OUTPUT** 1100-2460Lm  
**CCT** 2700-6500K  
**LENGTH** 225mm / 320mm / 410mm / 535mm  
**CERTIFICATION** CCC CE FCC UL RoHS



### [11] U-BENT TUBE LIGHT

**POWER** 15W 18W  
**LUMEN OUTPUT** 1800Lm / 2200Lm  
**CCT** 2700-5000K  
**DIMENSION** 571.5x180mm



### [12] TRADITIONAL STYLE LED WALLPACK LIGHT

**POWER** 55W 100W  
**VOLTAGE** 100-277V  
**LUMEN OUTPUT** 6500-7100Lm / 11900-13000Lm  
**CCT** 4000-5700K  
**CERTIFICATION** DLC UL / IP65





### [13] GIMBAL WALLPACK LIGHT

**POWER** 80W  
**VOLTAGE** 100-277V  
**LUMEN OUTPUT** 9900-12000Lm  
**CCT** 4000-5700K  
**DIMENSION** 232x225x132mm  
**CERTIFICATION** DLC UL / IP65



### [14] DUST TO DAWN WALL MOUNT LIGHT

**POWER** 20W  
**VOLTAGE** 220V  
**LUMEN OUTPUT** 1800Lm/W  
**CCT** 5000K  
**DIMENSION** 225x145x102.2mm  
**CERTIFICATION** DLC UL



### [15] BARN LIGHT WITH PHOTOCELL

**POWER** 50W 70W  
**VOLTAGE** 120-277V  
**LUMEN OUTPUT** 6000-9100Lm  
**CCT** 4000K / 5000K  
**DIMENSION** 374x252x148.8mm / 372x250x150mm  
**CERTIFICATION** RoHS / IP65



### [16] SLIM FIT CANOPY LIGHT

**POWER** 35W  
**VOLTAGE** 100-277V  
**LUMEN OUTPUT** 3400-3500Lm  
**CCT** 6500K  
**DIMENSION** 249X249X105 mm  
**CERTIFICATION** RoHS UL / IP44







## COMMERCIAL LIGHTS



### [17] GAS STATION CANOPY

**POWER** 100W 140W

**VOLTAGE** 120-277V / 100-277V

**LUMEN OUTPUT** 13000Lm / 14000Lm

**CCT** 4000K

**DIMENSION** 382x382x129mm / 382x382x130mm

**CERTIFICATION** IP44 (100W)



### [18] SLIM FLOOD LIGHT

**POWER** 20W 35W 50W 70W 100W 150W 200W

**VOLTAGE** 100-277V / 347W / 180-528V

**LUMEN OUTPUT** 3120-17000Lm

**CCT** 2700-7500K

**CERTIFICATION** DLC CE ETL SAA UL RoHS/ IP65



### [19] HIGH POWER MODULE FLOOD LIGHT

**POWER** 350W

**VOLTAGE** 100-277V

**LUMEN OUTPUT** 24000-35000Lm

**CCT** 2700-8000K

**CERTIFICATION** CE UL RoHS / IP65



### [20] ARCHITECTURAL FLOOD LIGHT

**POWER** 30W 50W 100W 120W 150W

**VOLTAGE** 100-277V

**LUMEN OUTPUT** 3900-26000Lm

**CCT** 5000K

**CERTIFICATION** CE DLC FCC ETL RoHS / IP65







### [21] TEMPORARY WORK LIGHT

**POWER** 60W 100W 150W  
**VOLTAGE** 100-277V  
**LUMEN OUTPUT** 7200-18000Lm  
**CCT** 5000K  
**CERTIFICATION** CE RoHS cULus



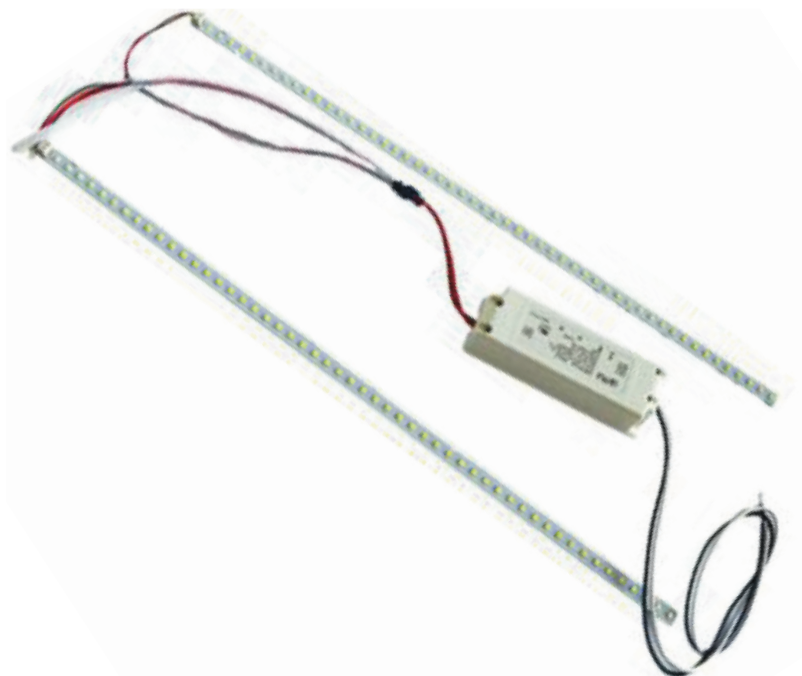
### [22] SLIM SHOE BOX LIGHT

**POWER** 150W 200W  
**VOLTAGE** 100-277V / 220-347V  
**LUMEN OUTPUT** 18000-19400Lm / 26000Lm  
**CCT** 4000-5700K  
**CERTIFICATION** DLC ETL UL / IP65



### [23] RETROFIT KIT

**POWER** 45W 60W 150W  
**VOLTAGE** 100-277V / 347V  
**LUMEN OUTPUT** 3500-44000Lm / 3240-4545Lm  
**CCT** 2700-8000K  
**CERTIFICATION** CE DLC ISO UL / IP40



### [24] TROFFER RETROFIT KIT

**POWER** 20-50W  
**VOLTAGE** 100-277V  
**LUMEN OUTPUT** 2450-6400Lm  
**CCT** 3000-5000K  
**LENGTH** 550-1100mm  
**CERTIFICATION** DLC ETL



## COMMERCIAL LIGHTS



### [25] BUG EYE EMERGENCY LIGHT

**POWER** 5.4W  
**VOLTAGE** 100-277V  
**DIMENSION** 146.1x114.3mm  
**CERTIFICATION** UL



### [26] WALL SCONE LIGHT

**POWER** 23.8W  
**VOLTAGE** 120V  
**LUMEN OUTPUT** 1600Lm  
**CCT** 3000K  
**LENGTH** 250mm



### [27] COMMERCIAL PILLARS LIGHT

**POWER** 10W 20W  
**LUMEN OUTPUT** 787.2Lm / 1107Lm  
**LENGTH** 2003A-LED: 415mm / 665mm / 1015mm  
2003B-LED: 380mm / 630mm / 980mm  
2003C-LED: 395mm / 645mm / 995mm  
**CERTIFICATION** DLC ETL / IP 65



### [28] HALF CORN BULB

**POWER** 54W 115W  
**VOLTAGE** 100-277V  
**LUMEN OUTPUT** 5900Lm / 13500Lm  
**CCT** 4000-5700K  
**DIMENSION** 113x243x80mm / 138x297x87mm  
**CERTIFICATION** DLC UL / IP51





### [29] CORN LIGHT

**POWER** 30W 40W 55W 60W 80W 100W 115W

**VOLTAGE** 120V / 347V

**LUMEN OUTPUT** 6000-6800Lm

**CCT** 2700-6500K

**CERTIFICATION** CCC CE DLC FCC

ERP UL RoHS / IP64



### [30] RUNNING MAN EXIT SIGN & EMERGENCY LIGHTING

**POWER** 2 pcs of 1W emergency head

**VOLTAGE** 120V / 347V

**DIMENSION** 342.9x228.6mm



### [31] CLASSIC WALL-MOUNTED LED BARN LIGHT

**POWER** 42W

**VOLTAGE** 100-277V AC

**LUMEN OUTPUT** 4000Lm

**CCT** 5000K

**DIMENSION** 38x36x60cm

**FEATURE** Photocell (with/without)

**CERTIFICATION** ETL FCC RoHS



### [32] LED OUTDOOR POST LIGHT

**POWER** 60W 100W 150W

**VOLTAGE** 100-300V

**LUMEN OUTPUT** 7800-19500Lm

**CCT** 3000-5000K

**DIMENSION**  $\phi$ 360mm /  $\phi$ 400mm

**CERTIFICATION** CE ETL FCC RoHS / IP65

**C&C LIGHTING INC**

## COMMERCIAL LIGHTS



### [33] GOOSE NECK OUTDOOR LANTERN

**POWER** 30W 50W 60W  
**VOLTAGE** 100-240V / 100-277V  
**LUMEN OUTPUT** 115Lm/W  
**CCT** 3000-5000K / customize  
**DIMENSION** ø590x318mm (lamp)



### [34] ANTIQUED GARDEN LIGHT

\*\*FIXTURE ONLY with E26 Base



### [35] TRACK LIGHT

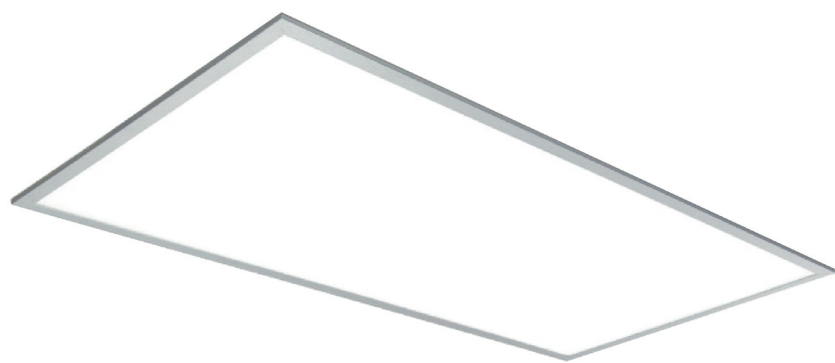
**POWER** 45W  
**VOLTAGE** 100-240V  
**LUMEN OUTPUT** 3500-3700Lm  
**CCT** 2700-5000K  
**DIMENSION** 161x110x234mm  
**CERTIFICATION** IP20



### [36] TRACK LIGHT - JOINER

\*\*Joiner for Track Light





### [37] ANTI-STROBE BACK LIT PANEL LIGHT

**POWER** 40W 60W

**VOLTAGE** 120-4347V / 277-480V

**LUMEN OUTPUT** 4200-7500Lm

**CCT** 3000-5000K

**DIMENSION** 1x4FT / 2x2FT / 2x4FT

**CERTIFICATION** cULus RoHS



### [38] INGROUND LIGHT

**POWER** 1W

**VOLTAGE** 24V

**MATERIAL** Aluminum Housing

**CCT** 3000K

**DIMENSION** 38x65x27mm / 34x83x50mm



### [39] INGROUND LIGHT

**POWER** 3W

**VOLTAGE** 12V

**LUMEN OUTPUT** 150Lm

**CCT** 2700-6500K

**DIMENSION** 16.56x3.04"



## RESIDENTIAL LIGHTS



### [40] INGROUND LIGHT

**POWER** 3W  
**VOLTAGE** 12V  
**LUMEN OUTPUT** 150Lm  
**CCT** 2700-6500K  
**DIMENSION** 16.56x3.04"



### [41] INGROUND LIGHT

**POWER** 3W  
**VOLTAGE** 12V  
**LUMEN OUTPUT** 150Lm  
**CCT** 2700-6500K  
**DIMENSION** 16.56x3.04"



### [42] STRIP LIGHT

**POWER** 7W/m  
**VOLTAGE** 110V/m  
**LUMEN OUTPUT** 330Lm/m  
**COLOURS** Red / Yellow / Blue / Green / White  
**LENGTH** 5m  
**CERTIFICATION** CE ETL RoHS



### [43] DIMMABLE DRIVERS

**POWER** 20-86W  
**OPERATING TEMPERATURE** -20~70°C  
**DIMENSION** 6.93x2.75x1.38"  
**WEIGHT** 650g  
**CERTIFICATION** cULus



### [44] RECESSED MULTI POT LIGHTS

**POWER** 7W x 2  
**VOLTAGE** 120V  
**CCT** 3000K / 4000K / 5000K  
**DIMENSION** 350x190mm  
**CERTIFICATION** cETL



### [45] FLUSH MOUNT CEILING LIGHT

**POWER** 17W  
**VOLTAGE** 120V  
**LUMEN OUTPUT** 1300Lm  
**CCT** 3000K / 4000K / 5000K



### [46] INTEGRATED T5

**POWER** 9-15W  
**VOLTAGE** 86-277V  
**CCT** 3000-6000K  
**CERTIFICATION** CCC CE FCC RoHS UL



### [47] SPOT LIGHTS

**POWER** 6W  
**VOLTAGE** 120V / Dimmable  
**LUMEN OUTPUT** 500Lm  
**CCT** 3000K / 4000K / 5000K  
**LIFESPAN** 50,000hrs  
**CERTIFICATION** cETLus, Energy Star





## RESIDENTIAL LIGHTS



### [48] FILAMENT LIGHTS

**POWER** 4W / 5W  
**VOLTAGE** 120V  
**LUMEN OUTPUT** 380Lm  
**LIFESPAN** 35,000hrs  
**CERTIFICATION** cETLus



### [49] CAPSULE LIGHTS

**POWER** 1.5W / 5W  
**VOLTAGE** 12V / Dimmable  
**LUMEN OUTPUT** 180Lm / 420Lm  
**CCT** 3000K / 5000K  
**LIFESPAN** 35,000hrs  
**CERTIFICATION** cETLus



### [50] RECESSED SLIM POT LIGHT

**POWER** 9-20W  
**VOLTAGE** 120V / 347V  
**CCT** 3000K / 4000K / 5000K  
**DIMENSION** 4" / 6" / 8"  
**FEATURE** Dimmable  
**CERTIFICATION** cETLus



### [51] COLOUR CHANGEABLE RECESSED SLIM PANEL LIGHT

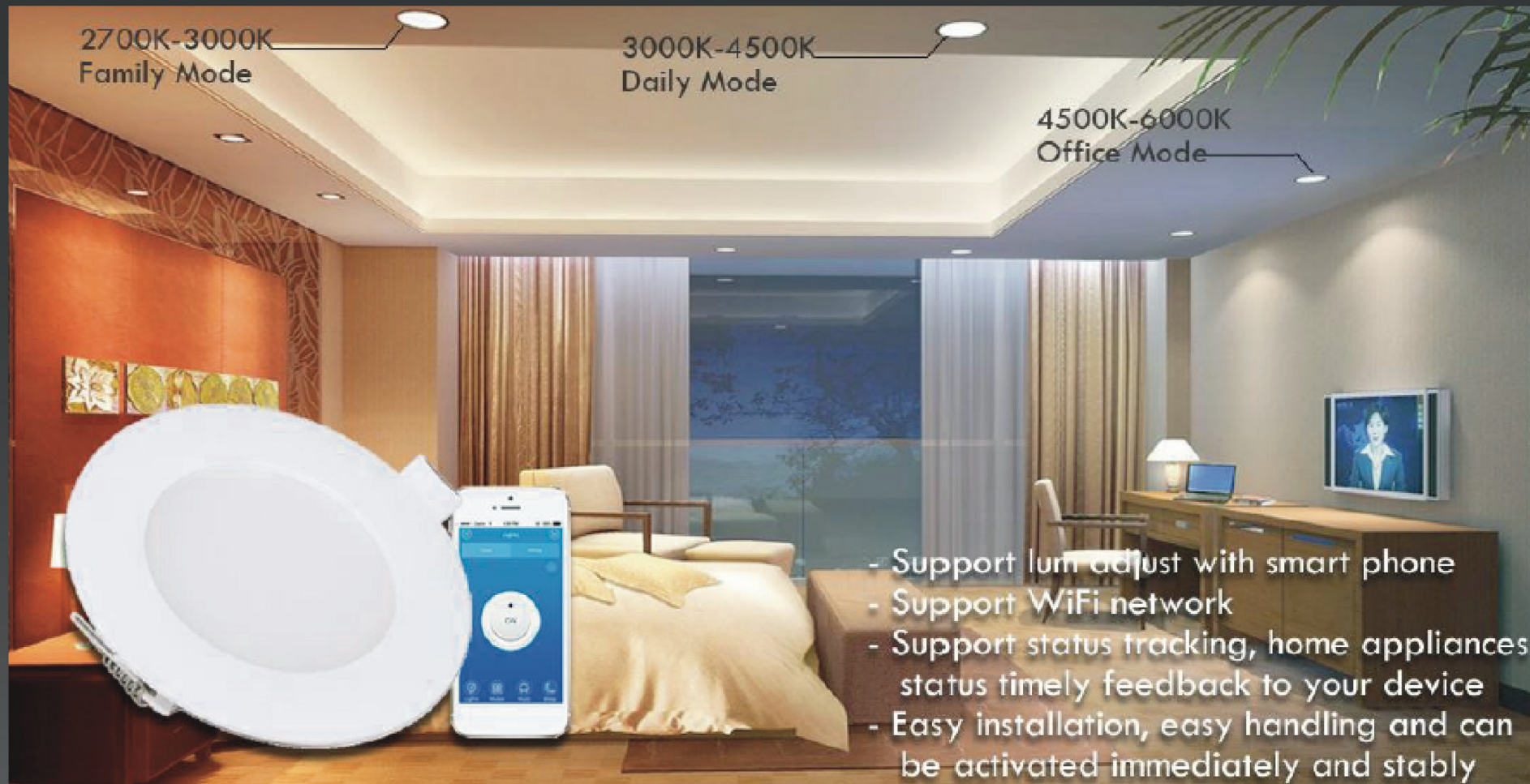
**POWER** 9-20W  
**VOLTAGE** 120V / 347V  
**DIMENSION** 4" / 6"  
**FEATURE** Dimmable  
**CERTIFICATION** cETLus



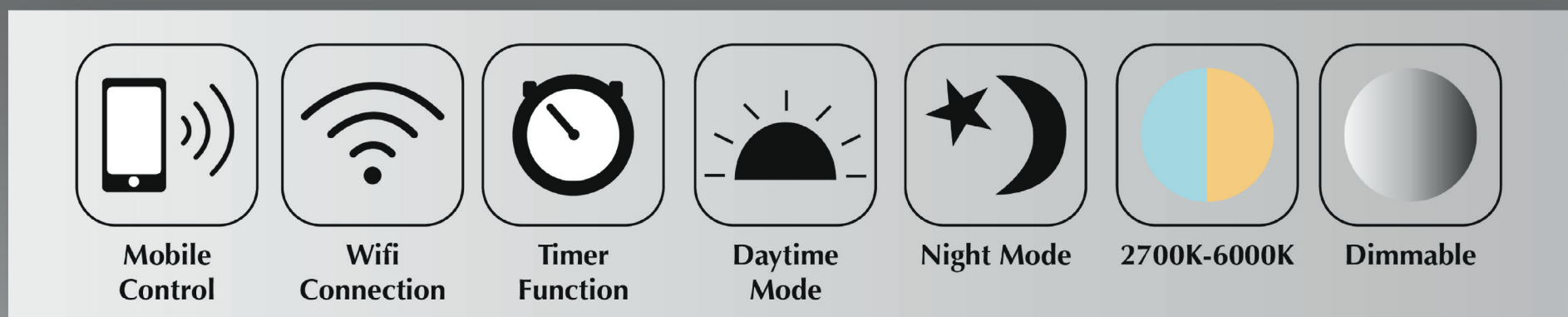
**[52] 5' / 6' RECESSED DOWN LIGHT****POWER** 10W 14W**VOLTAGE** 120V**LUMEN OUTPUT** 70-80Lm/W**CCT** 3000 / 5000K**DIMENSION** 4 / 6 inches**CERTIFICATION** ETL EnergyStar IC**[53] 4' RECESSED DOWN LIGHT****POWER** 10W**VOLTAGE** 120V**LUMEN OUTPUT** 70Lm/W**CCT** 3000K**DIMENSION** 4"**CERTIFICATION** ETL EnergyStar IC**[54] GIMBAL POT LIGHT****POWER** 6W 7W**VOLTAGE** 120V**LUMEN OUTPUT** 450-575Lm**CCT** 2700-5000K**DIMENSION** 3 / 4 inches**CERTIFICATION** ETL EnergyStar FCC IC**[55] DOUBLE RING CEILING LIGHT****POWER** 25W**VOLTAGE** 90-132V**LUMEN OUTPUT** 1958Lm**CCT** 2700-6500K**CERTIFICATION** CE EnergyStar FCC UL



# SMART LED 4" SLIM PANEL LIGHTS



## Features





## **RESIDENTIAL LIGHTS**

**POT LIGHTS**

**DOWNLIGHTS**

**CEILING LIGHTS**

**CABINET LIGHTS**

**BULBS**

**STRIP LIGHTS**

**DRIVERS**

**[www.ccrled.com](http://www.ccrled.com)**

1 - 155 Winges Rd. Woodbridge L4L 6C7  
905-856-0903

64 - 7250 Keele St. Vaughan L4K 1ZB  
647-887-7403

11 - 400 Esna Park Dr. Markham L3R 3K2  
905-604-6809

2 - 91 Esna Park Dr. Markham L3R 2S2  
905-604-0143

**C&C LIGHTING INC**





C&C LIGHTING inc.

# RESIDENTIAL PRODUCT HIGHLIGHTS 2019

*Efficient, practical and sustainable LED lighting solution*

ETOBICOKE MARKHAM  
WOODBRIIDGE VAUGHAN