

LED INTEGRATED T5 FIXTURE 10/12"

C&C Lighting Inc. Technical Data Sheet





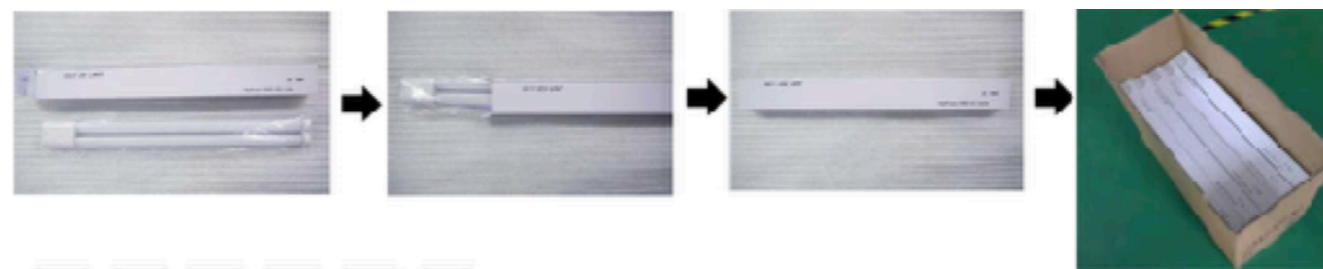
- The LED 2G11 tube can replace both Osram and Philip Dulux compact fluorescent tube
- High lumen Epistar 2835 SMD
- Aluminum housing and PCB is good for heat dissipation
- Isolated driver, constant current, Rubycon capacitor making lamp work stably, no flickering.
- UL/cUL, CE, RoHS approved
- 3 years warranty
- High quality and simple installation
- Typically used in garden, commercial buildings, parking garages and etc.
- Replacement of traditional halogen lamp

TECHNICAL SPECIFICATIONS

| MODEL NUMBER | CH-2G11-10W | CH-2G11-15W | CH-2G11-18W | CH-2G11-23W |
|---------------------|------------------|-------------|-------------|-------------|
| INPUT VOLTAGE | 85-277V AC | | | |
| LED LIGHT SOURCE | Epistar 2835 SMD | | | |
| LED QTY | 144pcs | 144pcs | 208pcs | 320pcs |
| RATED POWER | 10W | 15W | 18W | 23W |
| LUMINOUS FLUX | 1100Lm | 1600Lm | 1920Lm | 2460Lm |
| DIMENSION | 225x41x18mm | 320x41x18mm | 410x41x18mm | 535x41x18mm |
| NET WEIGHT | 180g | 240g | 240g | 330g |
| BASE | 2G11 | | | |
| LAMPSHADE | Clear / Milky | | | |
| CCT | 2700-6500K | | | |
| CRI | Ra>83 | | | |
| POWER FACTOR | >0.95 | | | |
| WORKING TEMPERATURE | -20~40°C | | | |
| BEAM ANGLE | 360° | | | |
| LIFESPAN | 50,000hours | | | |
| REPLACE | CFL 18W | CLF 23W | CLF 40W | CLF 55W |

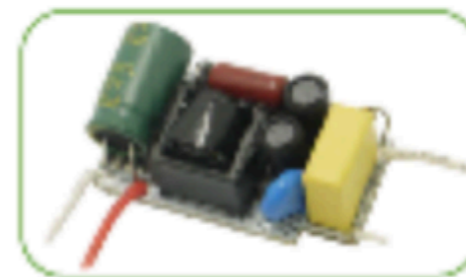
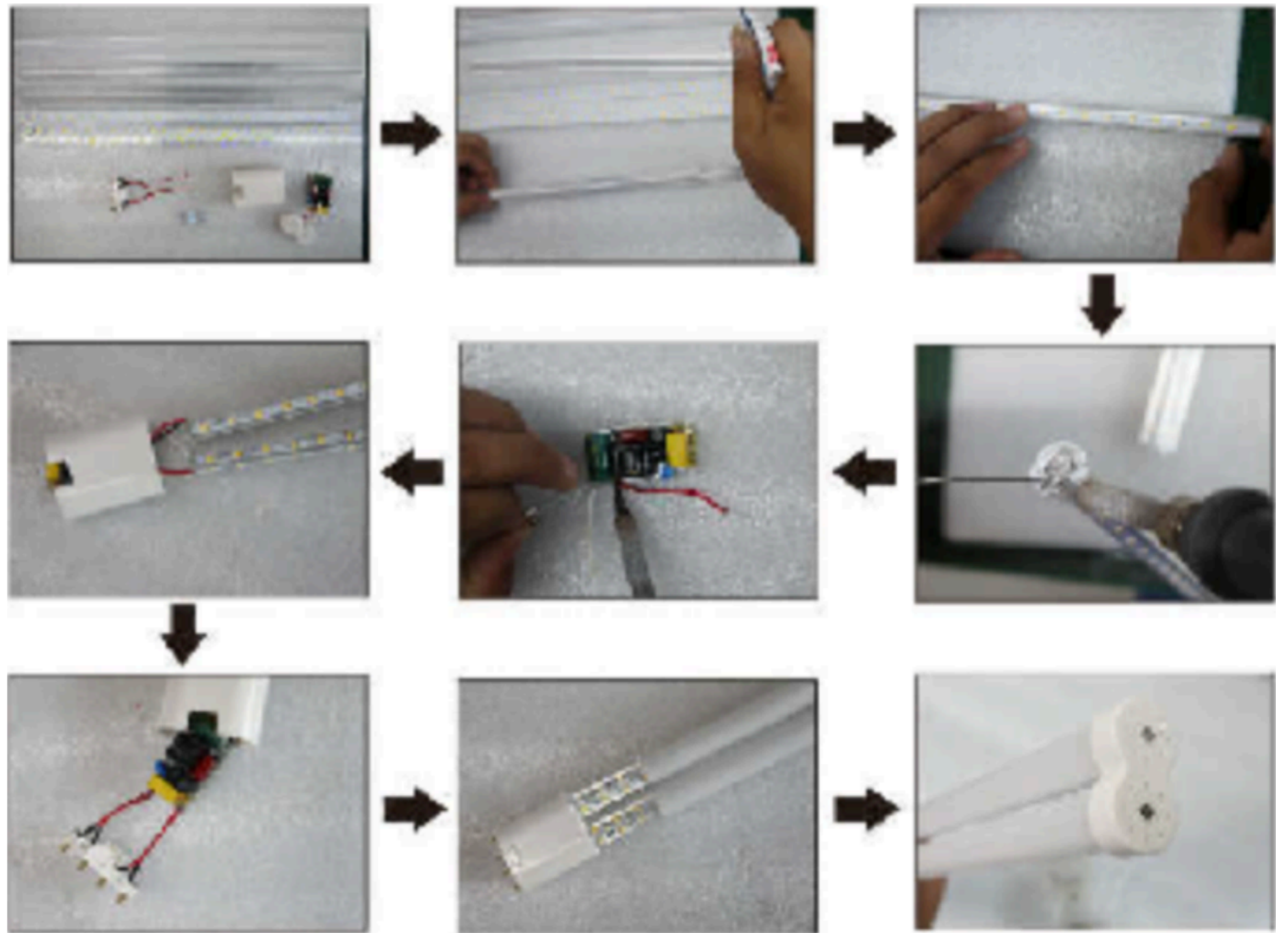
PACKAGING

| | CH-2G11- 10W | CH-2G11- 15W | CH-2G11- 18W | CH-2G11- 23W |
|--------------|--------------|--------------|--------------|--------------|
| CARTON SIZE | 59x26x32cm | 40x33x35cm | 48x33x35cm | 59x37x27cm |
| GROSS WEIGHT | 15.4kg | 15.4kg | 16kg | 17.6kg |
| PACKING QTY. | 100pcs | 50pcs | 50pcs | 50pcs |



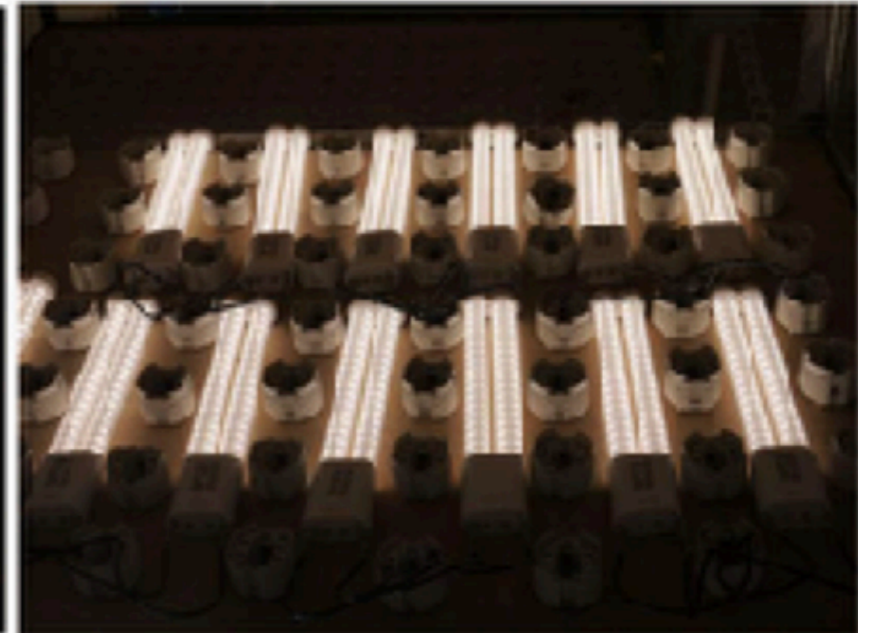
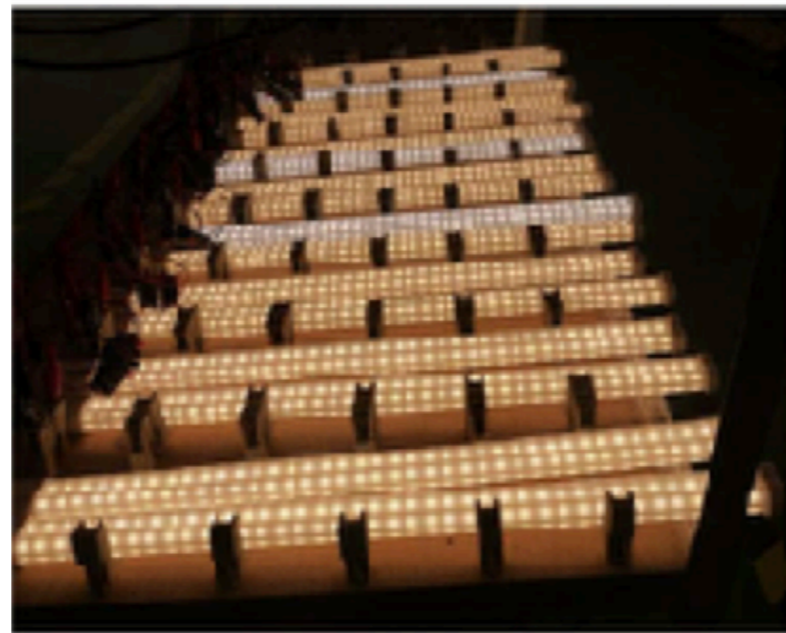


PRODUCTION PROCESS





AGING





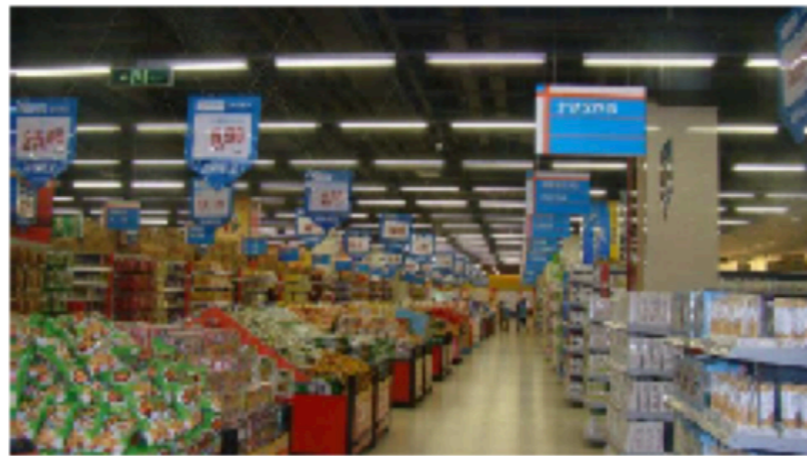
APPLICATIONS



Library



Office



Supermarket



Parking Garage



Factory



School