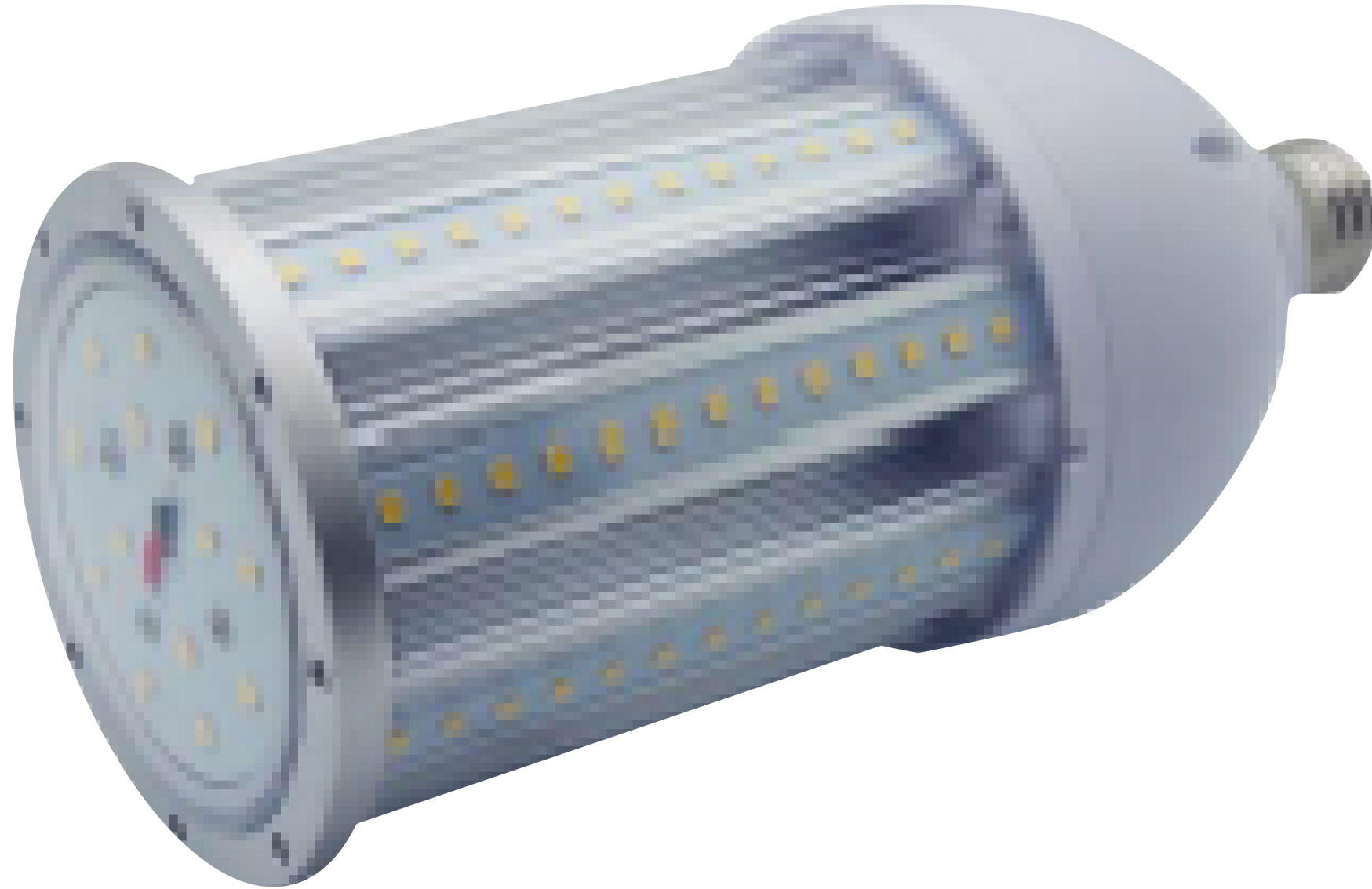


LED CORN LIGHT

C&C Lighting Inc. Technical Data Sheet



**CCC CE FCC DLC
cULus ERP RoHS**

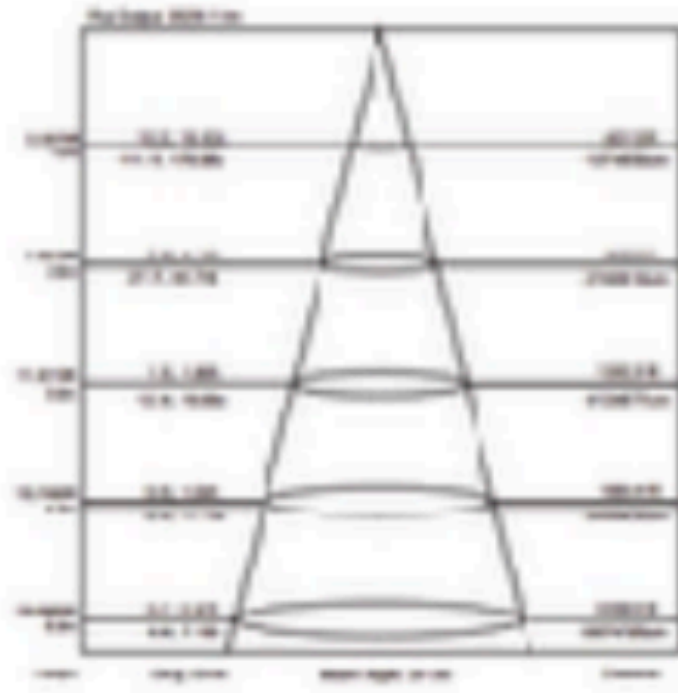


PRODUCT FEATURE

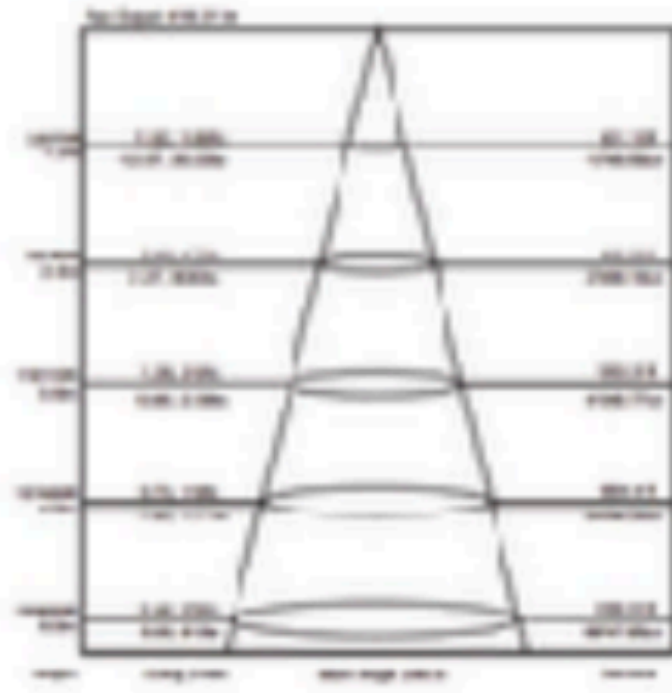
- PC V0 grade material, anti-ultraviolet light and high durability
- Independent developed driver and Rubycon capacitor
- Dow corning thermal silicon and dow corning RTV-T
- 5 years warranty

TECHNICAL SPECIFICATION

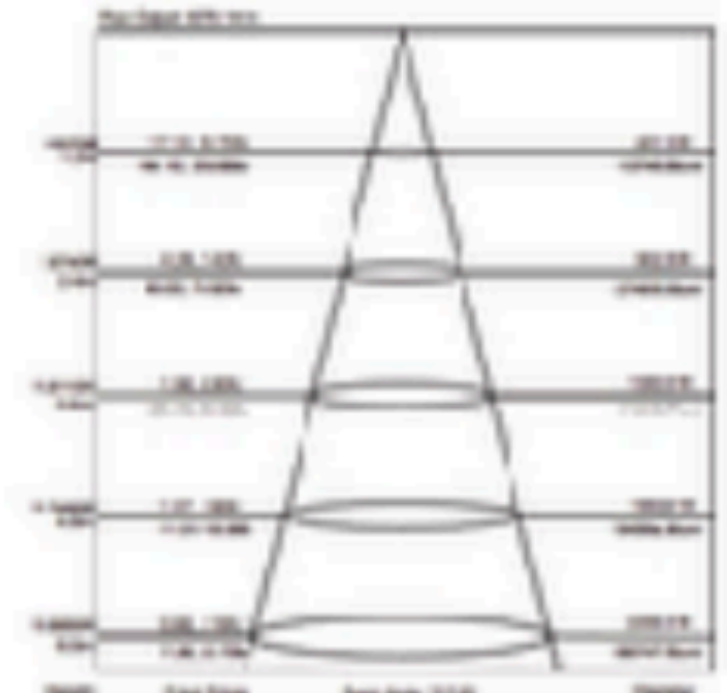
MODEL	C-CORN-27W	C-CORN-36W	C-CORN-45W	C-CORN-54W	C-CORN-60W
VOLTAGE	85-385V AC				
LED SOURCE	Epistar 2835				
LED QUANTITY	90pcs	117pcs	135pcs	171pcs	171pcs
POWER	27W	36W	45W	54W	60W
LUMINUS FLUX	3240Lm	4320Lm	5400Lm	6480Lm	7200Lm
DIMENSION(E27)	ø90x183mm	ø90x210mm	ø90x235mm	ø90x260mm	ø90x260mm
DIMENSION(E40)	ø90x193mm	ø90x220mm	ø90x245mm	ø90x270mm	ø90x270mm
NET WEIGHT	760g	800g	850g	900g	900g
BASE	E26/E27/E39/E40				
LAMPSHADE	Clear/Milky				
COLOUR	2700-6500K				
CRI	Ra>83				
POWER FACTOR	>0.95				
WORKING	-20~40°C				
BEAM ANGLE	360°				
LIFESPAN	50000hours				



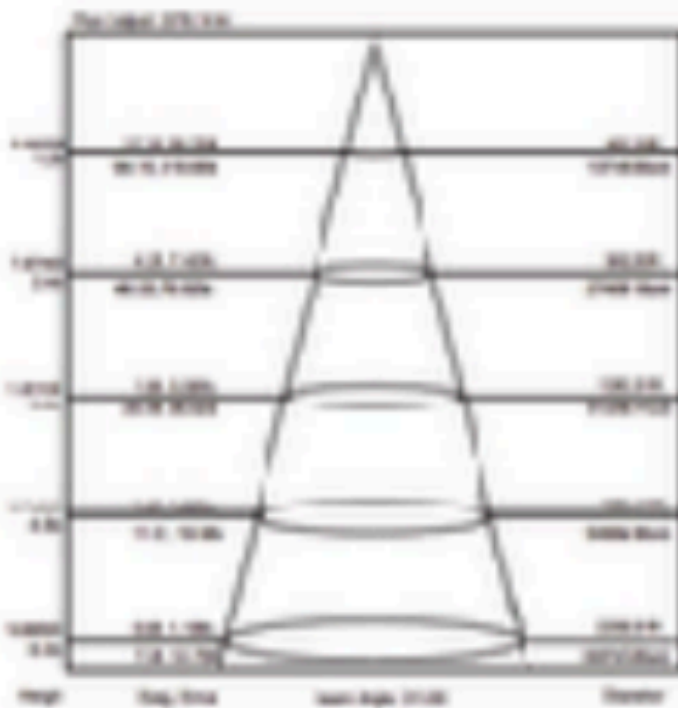
27W



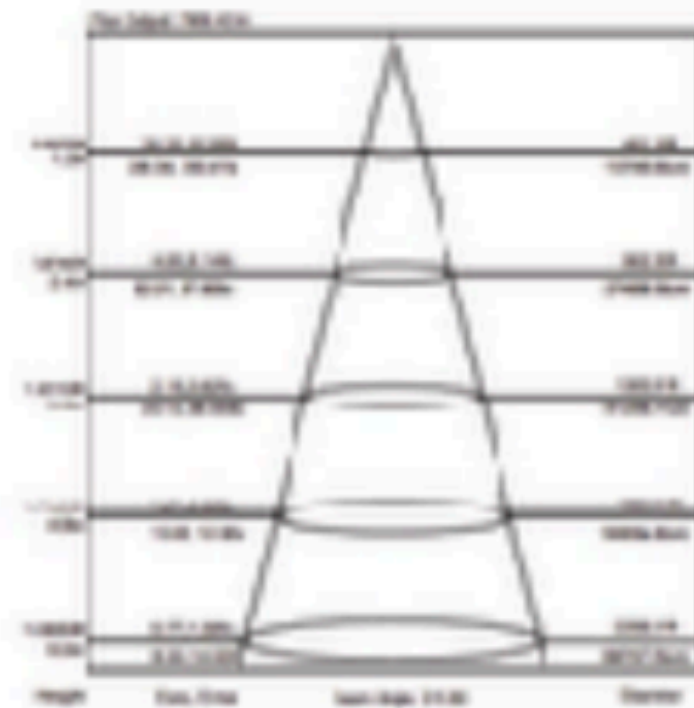
36W



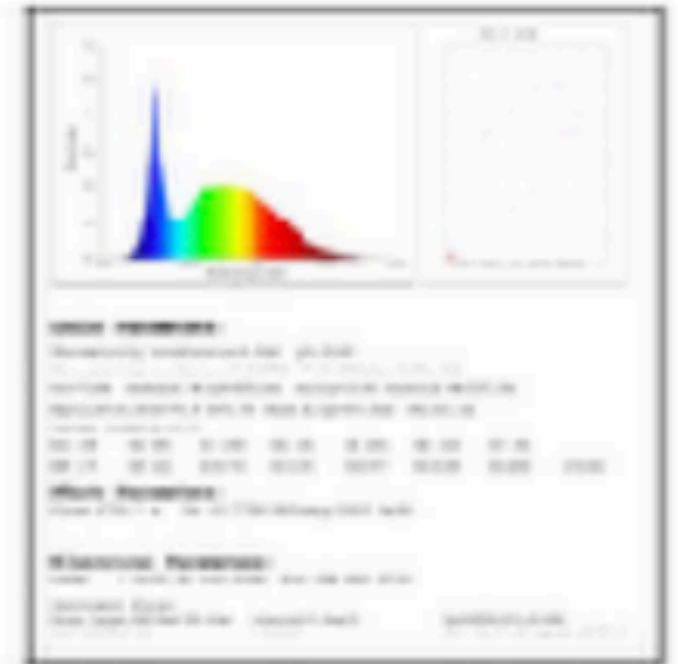
45W

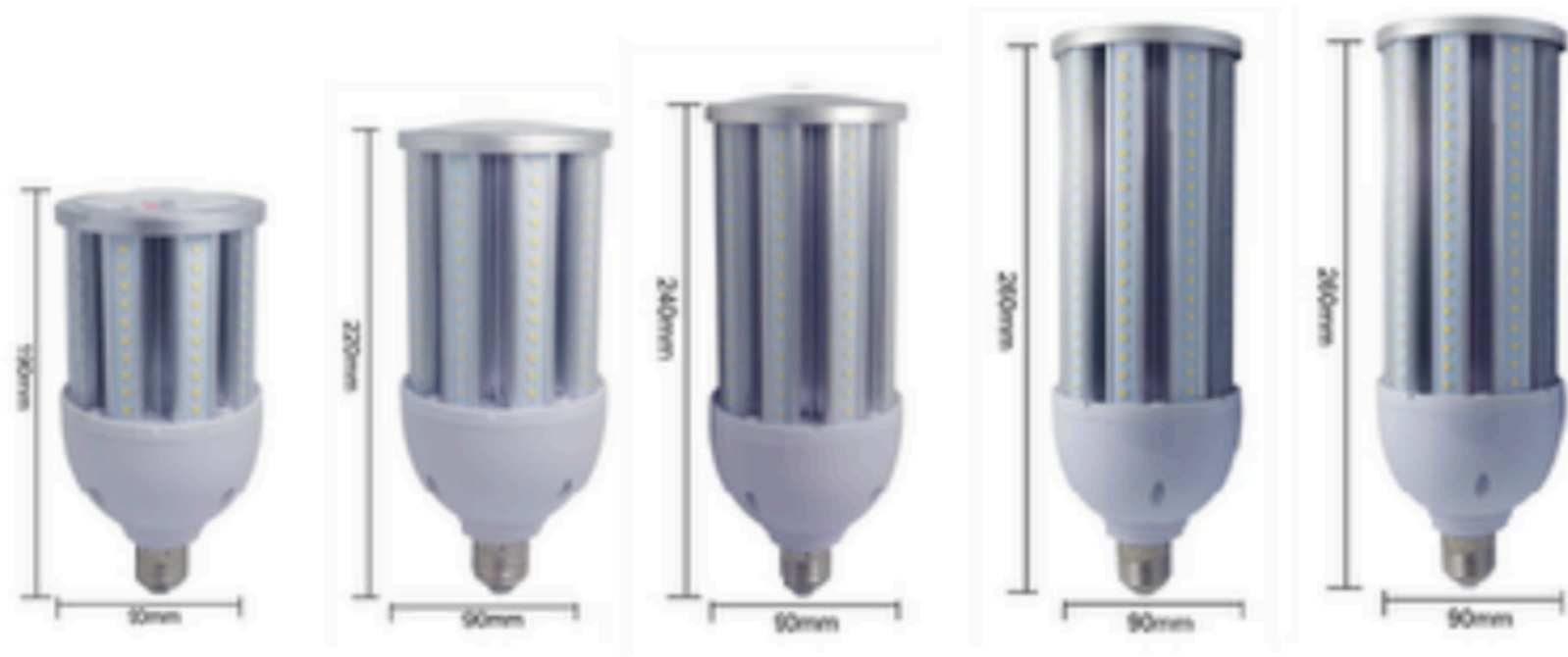


54W



60W





27W

36W

45W

54W

60W

