



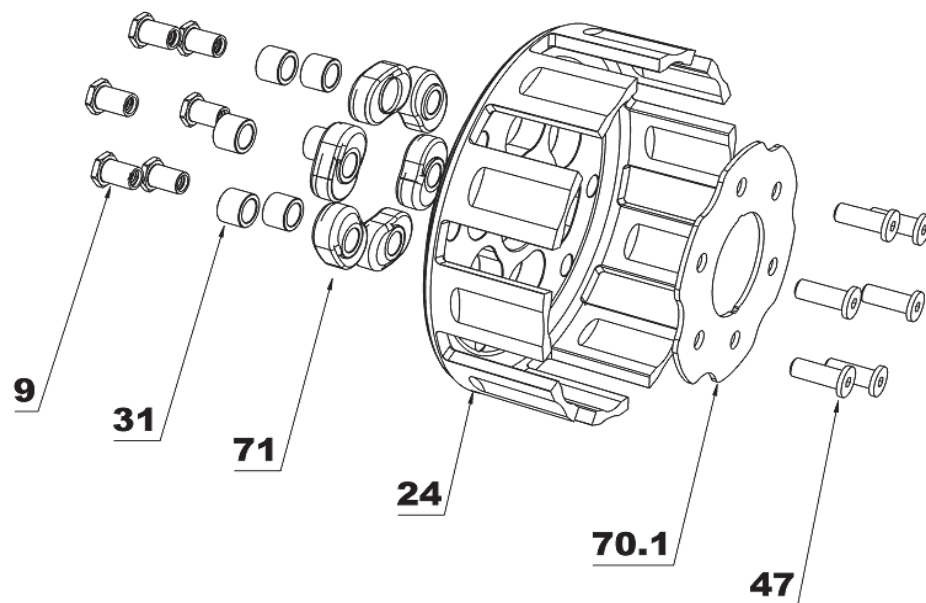
Yamaha YZ65 & YZ85

**INSTALLATION
GUIDE**

Doc ID: 195-4107072

Doc Rev: 111219

INCLUDED PARTS



#	Item Type	Part #	Qty
9	HARDWARE - Nut, Basket - M6 x 1.0 x 13.6mm, 11mm	117-201	5
31	HARDWARE - Spacer Screw Sleeve, Stainless Steel	184-117	5
71	BASKET CUSHIONS - Molded Basket Damper - YZ65, YZ85	474-117	5
24	CLUTCH BASKET	170-004	1
70.1	BASKET BACKING PLATE- YZ65,85	471-172	1
47	FASTENER - M6 x 16 Special Low Head Soc Cap 10.9	411-116	5
*	ADHESIVE - Loctite 262 (RED) .02 fl oz	491-002	1
*	DRILL - 1/4 SM Drill BIT	471-114	1

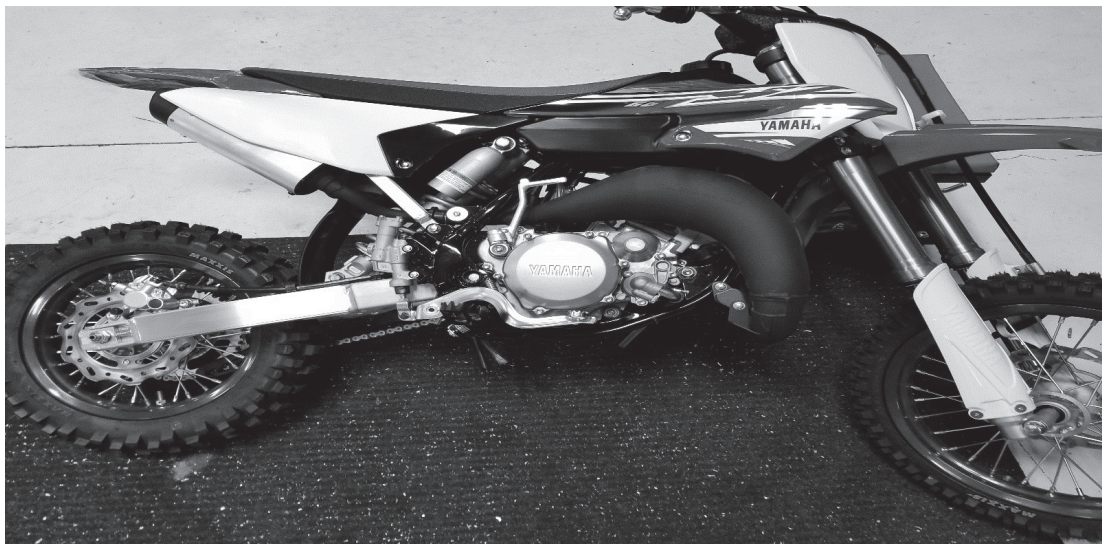
*Not Shown

TOOLS NEEDED

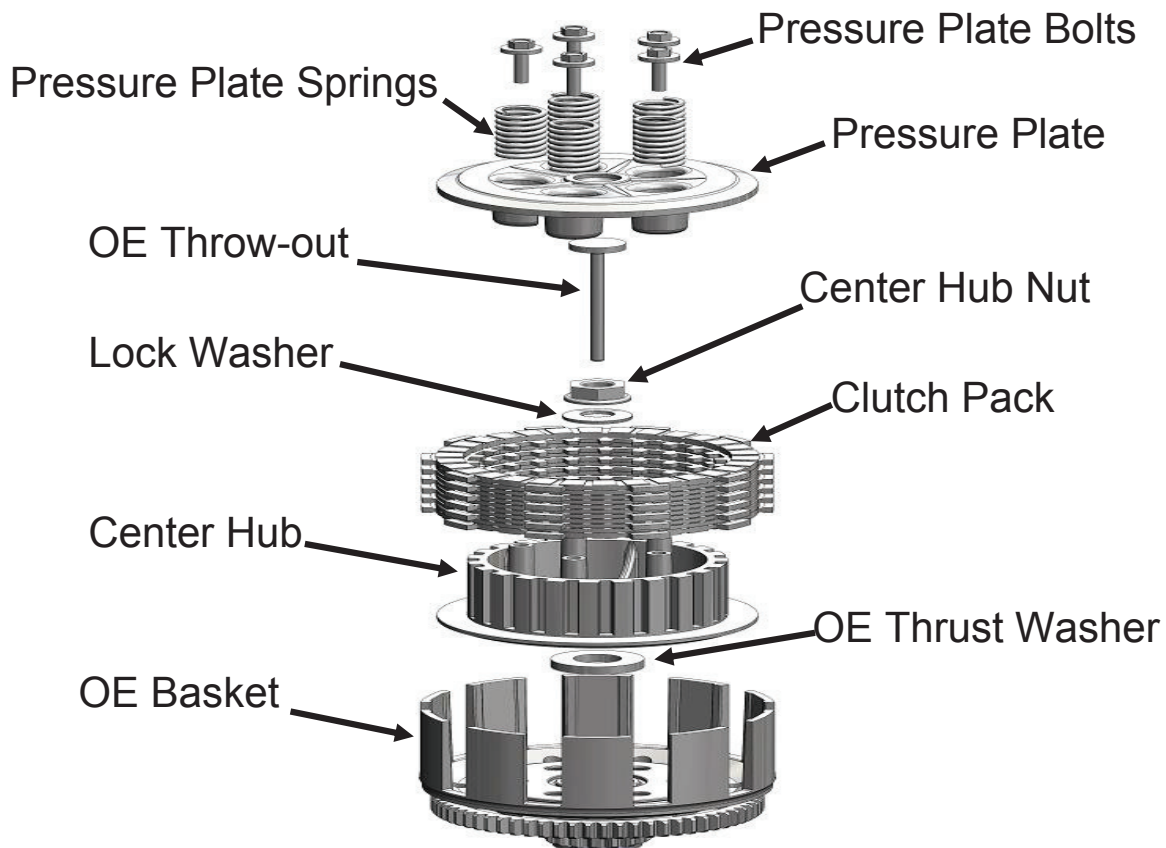
- 3mm Allen Wrench
- 10mm Socket
- 11mm Socket
- 19mm Socket
- Torque Wrench in-lbs
- Torque Wrench ft-lbs
- Drill
- Punch

DISASSEMBLE CLUTCH

1. With the fuel petcock turned to the off position, lay the bike on its left side. Catch any fuel that might drain in a suitable container.



2. Remove the clutch cover.
3. Remove all of the items shown below.

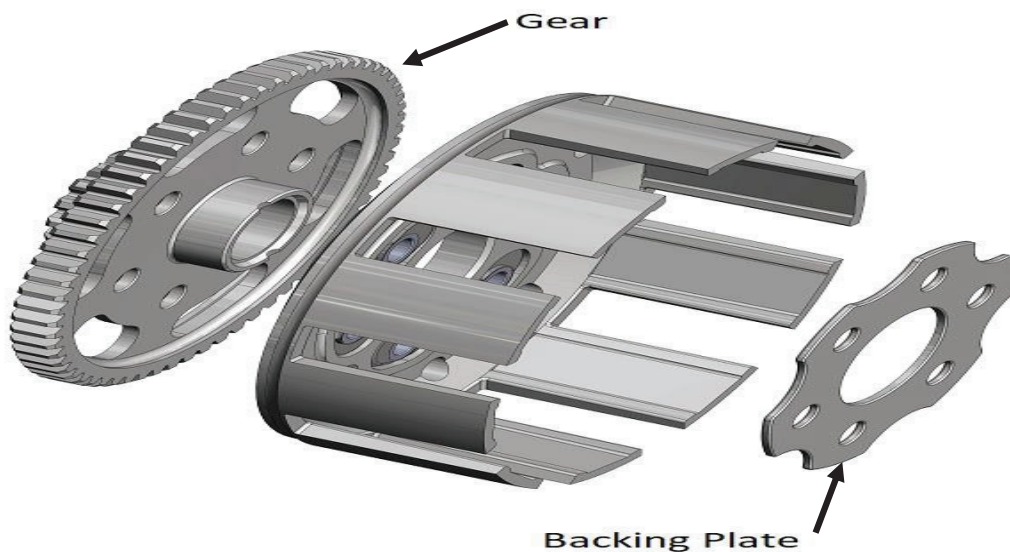


OE BASKET DISASSEMBLY

1. Set the OE basket assembly on a workbench with the ring gear facing down. Using a center punch and hammer, punch a divot into the center of each of the rivet heads
2. Using the drill bit provided, drill the heads off each rivet, so that the backing plate can be removed from the assembly.
Set your drill to low RPM and use proper cutting fluid or oil for best results

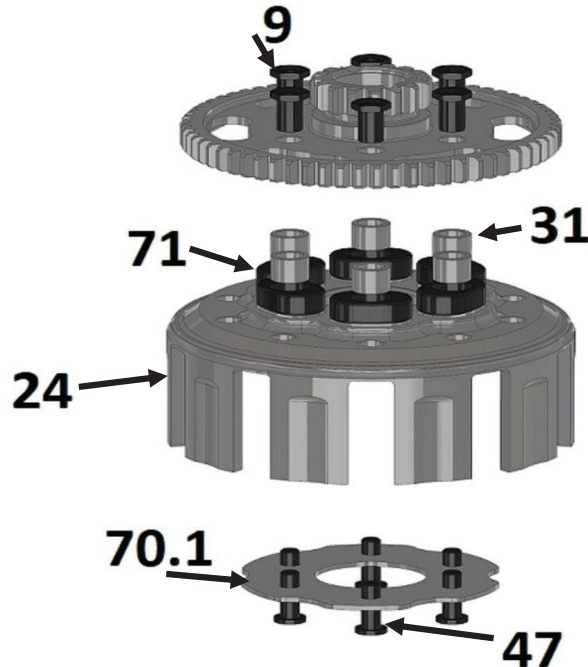


1. Separate the gear from the basket, the gear will be reused.

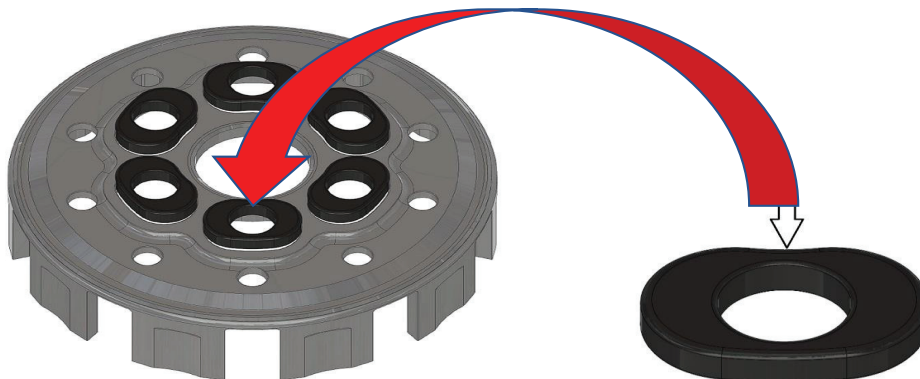


REKLUSE BASKET ASSEMBLY

1. Gather the items in the picture below: (9) Nut, OE Gear, (31) Spacer Screw Sleeve, (71) Basket Cushion, (24) Clutch Basket, (70.1) Basket Backing Plate, (47) Fastener, and Loctite 262 (RED).



2. Place the Rekluse Clutch Basket on a work bench and install the Rekluse Basket Cushions (it is recommended to lubricate the dampers with oil prior to installation).

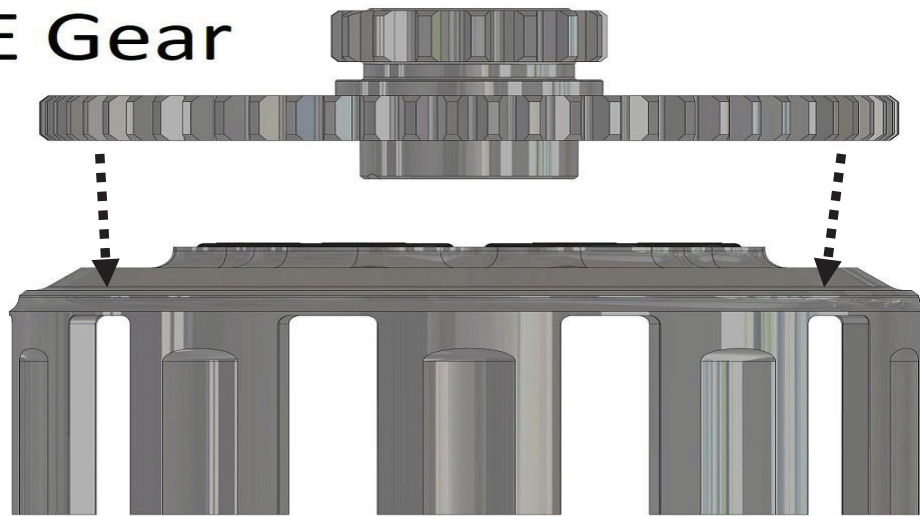


Note: *The dampers are directional. Place the concave portion of the damper towards the inner diameter of the basket.*

3. Now insert the Spacer Screw Sleeves into the dampers.

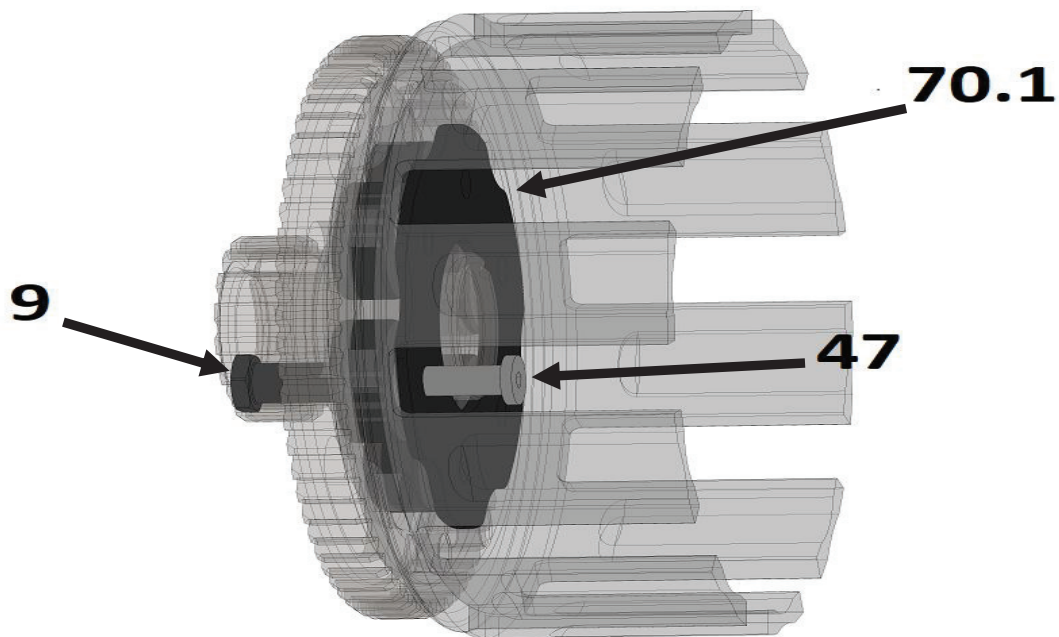
4. Install the OE Gear

OE Gear



5. With the Rekluse Basket assembly on its side:

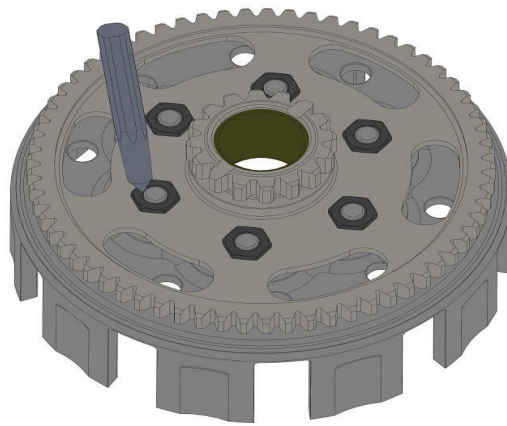
- a. Apply the supplied Loctite to one of the Fasteners (47).
- b. Line up the Backing Plate (70.1) with the holes in the basket. Insert the Fastener through the Backing Plate, Rekluse Basket, and OE Gear.
- c. Thread on one Nut (9) and hand tighten.
- d. Repeat steps a-c for the remaining 5 Fasteners and Nuts.



6. While securing the fasteners with a 3mm hex key use a torque wrench with a 11mm socket and torque the nuts to **80 in-lbs (9 N-m)** in a star pattern.
7. Turn the basket over on the workbench.
8. Using a hammer and center punch, peen the ends of the fasteners to the nuts where they pass through the nuts.

⚠ CAUTION

Be sure to peen only the fasteners to the nuts. **DO NOT** peen the aluminum basket.



⚠ WARNING

It is **critical** that you apply Loctite and peen the ends of the screws or they can back out. Rekluse is not responsible for engine damage caused by fasteners that back out.

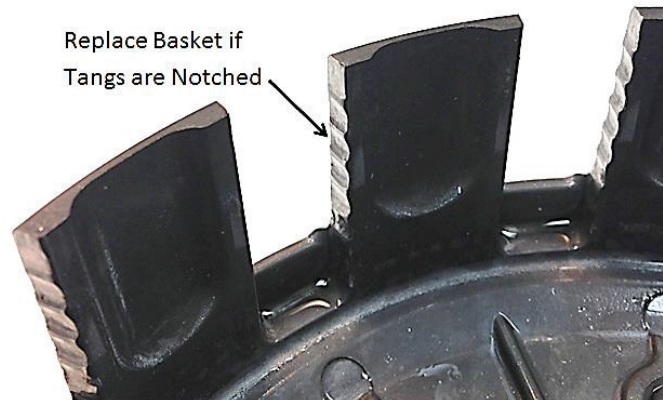
6. Install the Rekluse basket and torque the nut to **50 ft-lbs (70 N-m)**
9. Reinstall the remainder of the clutch components that were removed in Section 1, step 3.
10. Reinstall clutch cover and torque to OE specifications.

INSPECTION AND MAINTENANCE

Basket

Rekluse baskets are built using high quality materials but do wear based on the rider's use, type of terrain, and natural wear and tear.

- To keep your clutch basket performing at its best, perform regular maintenance on your bike and inspect your components regularly.
- Inspect the clutch basket for notching. Notched basket tang faces can cause performance issues. The basket should also be inspected for any fatigue cracking at the tang bases. Replace basket if necessary.
- Do not use baskets that have been filed, machined, or modified on the tangs.



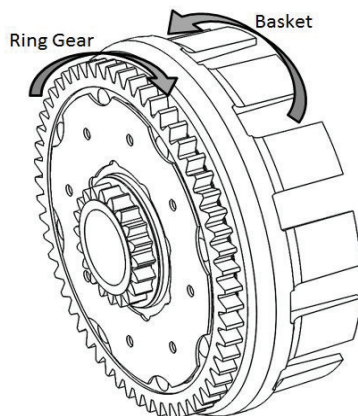
Dampers

The dampers inside the basket assembly shrink due to heat and use. This is a normal wear item and should be inspected periodically. Any movement between the dampers will shorten the life of your clutch and accelerate basket wear.

- Inspect the basket dampers and/or springs by checking the play between the ring gear and the basket. Replace the dampers/springs if you feel any play in the assembly.
- Inspect the dampers if your inner hub is notched. This is usually a sign that the dampers need to be replaced.

To inspect the dampers:

- Remove the basket from the engine, hold the ring gear in one hand and the basket in the other, then twist in opposite directions. The rotational play is sometimes accompanied by an audible “click” sound when rotating back and forth.
- If any rotational play can be felt between the basket and the ring gear, the dampers are worn and either the dampers and/or basket assembly need to be replaced.



- Replacement dampers can be purchased via product RMS-0207072.

NEED ADDITIONAL HELP?

Website

www.rekluse.com/support

Frequently Asked Questions

www.rekluse.com/faq

Support Videos

www.rekluse.com/support/videos

Phone

(208) 426-0659

Technical Support

Contact Technical Support for questions related to product installation, tuning, and performance.

Hours:

Monday thru Friday: 8:00 a.m. - 5:00 p.m.

Mountain Time zone

Email: tech@rekluse.com

Customer Service

Contact Customer Service for additional product information, orders, and returns.

Hours:

Monday thru Friday: 8:00 a.m. - 5:00 p.m.

Mountain Time zone

Email: customerservice@rekluse.com

