

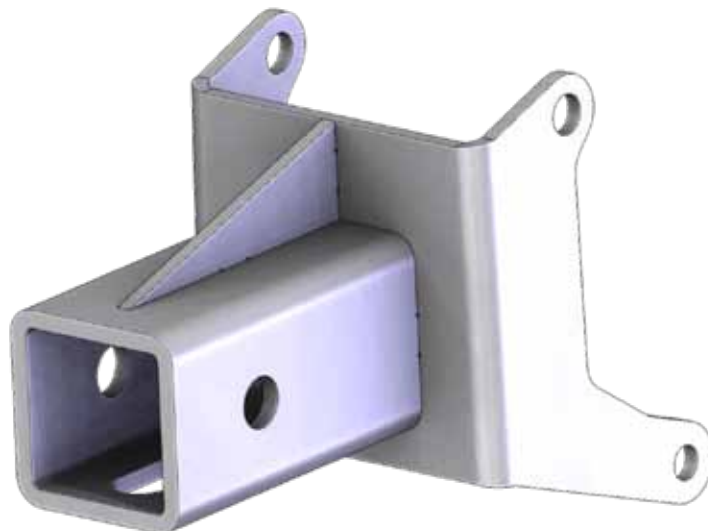
RENEGADE G2 REAR RECEIVER

Rear Receiver PART # 100945

Kit Components:

Qty. Part Description

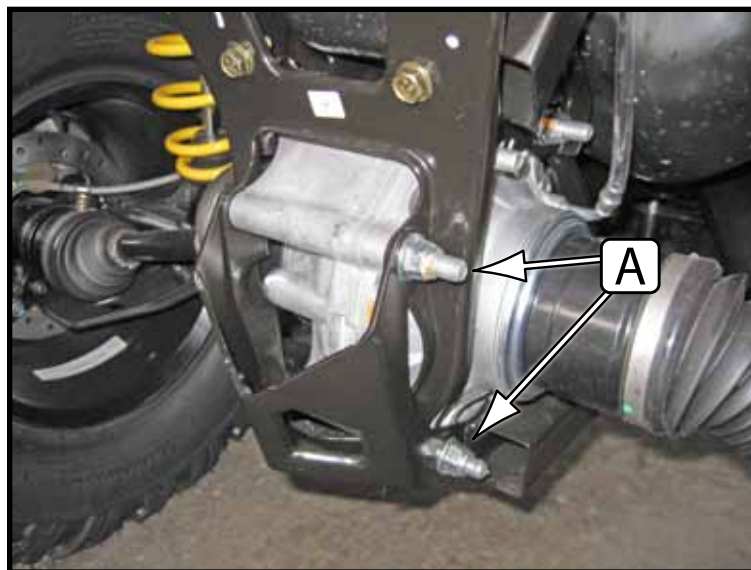
1..... Receiver Mount



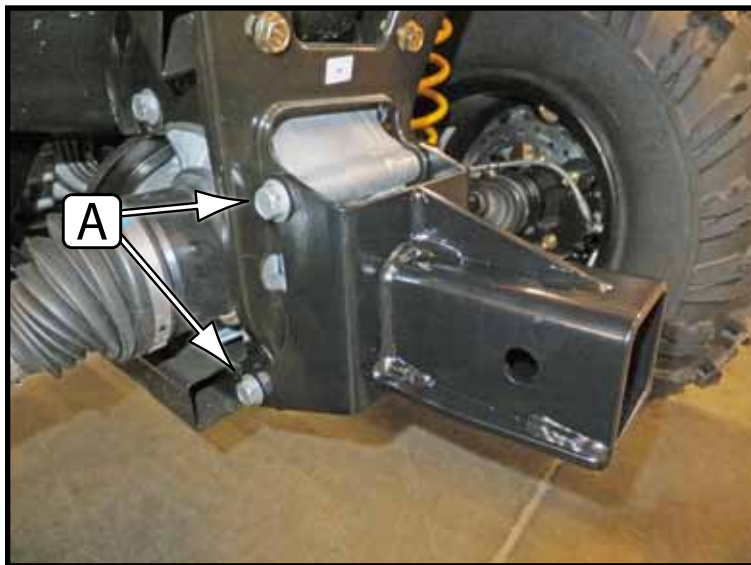
“Figure 1”

INSTALLATION INSTRUCTIONS:

1. Remove rear guard plate as shown in Figure 2.
Keep hardware for mount install.
2. Install receiver mount in place of rear guard plate using hardware removed in Step 1.
3. Tighten all hardware.



“Figure 2” Rear Guard Plate Removal



“Figure 3” Receiver Installation

