



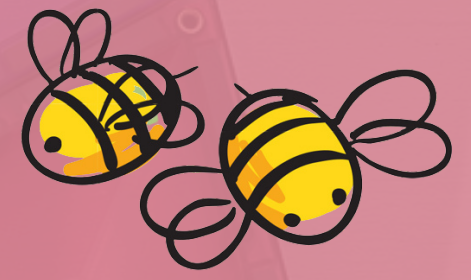
# Little Chiefs Boutique

## Connectix Guide





# Why do Little Chiefs LOVE Connetix?



Kids are drawn to Connetix because these beautiful tiles allow their imaginations to run wild and encourage them to create! Here are some reasons why Little Chiefs love Connetix!

## **Open Ended Play**

These tiles allow kids to be kids and create wild and wacky designs. A rocketship with a swimming pool, an upside down castle, a ball run covering the room or anything that they can dream, they can create!

## **Problem Solving**

Connetix teaches kids problem solving skills to ensure that their structure is stable, their ball run will roll the ball or that their creation is functional for their free play activity!

## **All Ages**

Connetix recommend these tiles for those over three years of age for the upmost safety of your Little Chiefs but we have seen all ages love these toys from one year olds up. Even adults love creating with these tiles.

## **Quality**

The quality is uncomparable. They are made from non-toxic, BPA and phthalate free ABS food-grade plastic. They undertake regular safety tests and the tiles are ultrasonically welded and include rivets for extra safety.

We are yet to see these tiles break.



# What are the different packs?



There are a range of "packs" with various different pieces.

- Starter Pack
- Creative Pack
- Mega Pack
- Ball Run Pack
- Ball Run Expansion Pack
- Geometric Pack
- Base Plate Pack
- Square Pack
- Car Pack
- Motion Pack
- Mini Pack












# Rainbow Packs

Pack Name	Amount of Tiles	Image	Investment
Mini 24 Pc	<ul style="list-style-type: none"><li>12 x Small squares</li><li>6 x Equilateral triangles</li><li>6 x Isosceles triangles</li></ul>		\$49
Geometric 30 Pc	<ul style="list-style-type: none"><li>6 x Hexagons</li><li>12 x Equilateral triangles</li><li>12 x Isosceles triangles</li></ul>		\$70
Square 40 Pc	<ul style="list-style-type: none"><li>4 x Large squares</li><li>36 x Small squares</li></ul>		\$90
Starter 62 Pc	<ul style="list-style-type: none"><li>4 x Large squares</li><li>24 x Small squares</li><li>12 x Equilateral triangles</li><li>8 x Right angle triangles</li><li>6 x Isosceles triangles</li><li>4 x Window pieces</li><li>4 x door pieces</li></ul>		\$115
Creative 100 Pc	<ul style="list-style-type: none"><li>6 x Large squares</li><li>36 x Small squares</li><li>12 x Equilateral triangles</li><li>12 x Right angle triangles</li><li>12 x Isosceles triangles</li><li>6 x Window pieces</li><li>6 x door pieces</li><li>4 x Rectangles</li><li>6 x fences</li></ul>		\$159
Mega 212 Pc	<ul style="list-style-type: none"><li>12 x Large squares</li><li>6 x Large hexagons</li><li>36 x Small squares</li><li>36 x Equilateral triangles</li><li>36 x Right angle triangles</li><li>36 x Isosceles triangles</li><li>12 x Window pieces</li><li>12 x door pieces</li><li>12 x Rectangles</li><li>12 x fences</li><li>2 x car bases</li></ul>		\$320



# Rainbow Packs








Pack Name	Amount of Tiles	Image	Investment
Ball Run 92 Pc	<ul style="list-style-type: none"> <li>36 x Connecting squares</li> <li>6 x Wooden Balls</li> <li>2 x Y Shape Split Tubes</li> <li>2 x Long Stairs</li> <li>2 x S Bend Tubes</li> <li>8 x U Shaped Tubes (180 degree bend)</li> <li>8 x Slide Tubes</li> <li>12 x Right Angle Tubes (90 degree bend)</li> <li>6 x Long Straight Tubes</li> <li>8 x Short Straight Tubes</li> <li>2 x Bowls</li> </ul>		\$139
Ball Run Expansion 66 Pc	<ul style="list-style-type: none"> <li>36 x Connecting squares</li> <li>2 x Double bowls</li> <li>6 x Right Angle Tubes (90 degree bend)</li> <li>6 x U Shaped Tubes (180 degree bend)</li> <li>8 x Spiral tubes</li> <li>2 x X tubes</li> <li>6 x Wooden balls</li> </ul>		\$115
Car 2 Pc	<ul style="list-style-type: none"> <li>1 x Blue car base</li> <li>1 x Yellow car base</li> </ul>		\$35
Motion 24 Pc	<ul style="list-style-type: none"> <li>2 Car bases with Rubber Wheels</li> <li>12 x Small squares</li> <li>8 x Rectangle pieces</li> <li>2 x door pieces</li> </ul>		\$65
Transport 50 Pc	<ul style="list-style-type: none"> <li>1 x Train/Truck</li> <li>2 x Car Bases</li> <li>3 x Equilateral triangles</li> <li>3 x Right angle triangles</li> <li>2 x Isosceles triangles</li> <li>15 x Door pieces</li> <li>4 x Small square pieces</li> <li>2 x Window pieces</li> <li>18 x Rectangles</li> </ul>		\$99
Base Plate 2 Pc	<ul style="list-style-type: none"> <li>1 x Green Base Plate (4 x 4)</li> <li>1 x Blue Base Plate (4 x 4)</li> </ul>		\$65









# Pastel Packs

Pack Name	Amount of Tiles	Image	Investment
Mini 32 Pc	<ul style="list-style-type: none"><li>16 x Small squares</li><li>8 x Equilateral triangles</li><li>8 x Isosceles triangles</li></ul>		\$70
Geometric 40 Pc	<ul style="list-style-type: none"><li>8 x Hexagons</li><li>16 x Equilateral triangles</li><li>16 x Isosceles triangles</li></ul>		\$90
Square 40 Pc	<ul style="list-style-type: none"><li>8 x Large squares</li><li>32 x Small squares</li></ul>		\$99
Creative 120 Pc	<ul style="list-style-type: none"><li>8 x Large squares</li><li>48 x Small squares</li><li>16 x Equilateral triangles</li><li>16 x Right angle triangles</li><li>16 x Isosceles triangles</li><li>8 x Window square pieces</li><li>8 x Hollow square pieces (door frames)</li></ul>		\$199
Mega 202 Pc	<ul style="list-style-type: none"><li>16 x Large squares</li><li>48 x Small squares</li><li>32 x Equilateral triangles</li><li>32 x Right angle triangles</li><li>32 x Isosceles triangles</li><li>8 x Large hexagons</li><li>8 x Window square pieces</li><li>8 x Hollow square pieces (door frames)</li><li>8 x Rectangles</li><li>8 x Fences</li><li>2 x cars</li></ul>		\$330





# Pastel Packs

Pack Name	Amount of Tiles	Image	Investment
Ball Run 106 Pc	<ul style="list-style-type: none"><li>• 48 x ball run squares</li><li>• 8 x balls</li><li>• 2 x Y Shape Split Tubes</li><li>• 2 x Long Stairs</li><li>• 2 x S Bend Tubes</li><li>• 8 x U Shaped Tubes (180 degree bend)</li><li>• 8 x Slide Tubes</li><li>• 12 x Right Angle Tubes (90 degree bend)</li><li>• 6 x Long Straight Tubes</li><li>• 8 x Short Straight Tubes</li><li>• 2 x Bowls</li></ul>		\$159
Ball Run Expansion 80 Pc	<ul style="list-style-type: none"><li>• 48 x Connecting squares</li><li>• 2 x Double bowl</li><li>• 6 x Right Angle Tubes (90 degree bend)</li><li>• 6 x U Shaped Tubes (180 degree bend)</li><li>• 8 x Spiral tubes</li><li>• 2 x X tubes</li><li>• 8 x Wooden balls</li></ul>		\$135
Base Plate 2 Pc	<ul style="list-style-type: none"><li>• 1x Lemon Base Plate (4 x 4)</li><li>• 1x Peach Base Plate (4 x 4)</li></ul>		\$65
Base Plate 2 Pc	<ul style="list-style-type: none"><li>• 1x Berry Base Plate (4 x 4)</li><li>• 1x Pink Base Plate (4 x 4)</li></ul>		\$65





# Age recommendation!

Depends on the age of your child and how your child likes to play! If your child is aged;

3 years: Starter pack OR Creative Pack! More pieces for more elaborate playing! Remember an eye on kids just in case, your family's safety is so important to us! Great fine motor skills development!

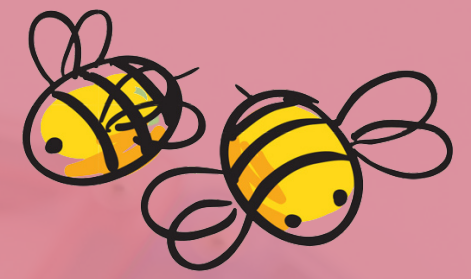
4 years: Creative Pack AND a Base Plate Pack OR Ball Run OR Motion Pack! They will get so much joy out of making a ball run or castle/house with the base plate!

5 years and up: Mega Pack AND a Ball Run OR a Base Plate OR Motion Pack! The more pieces and older they are the more elaborate their creations!

Now, generally speaking, we have found that little chiefs that like playing with dolls often enjoy having a base plate and pieces to create houses. Whereas little chiefs that like fast moving "tracks" enjoy the ball runs or motion packs!



# Frequently Asked Questions



## **What age are Connetix for?**

The tiles are recommended for 3 years and over for safety due to the size of the balls in the ball run.

## **What tiles should I get first?**

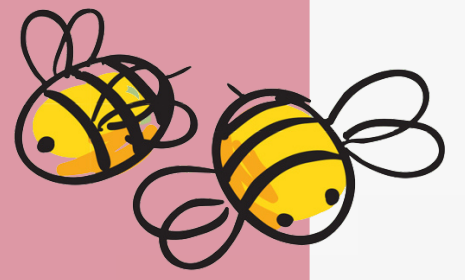
Depends on the age of your child and how your child like to play! If your child is aged;  
Now, generally speaking, we have found that little chiefs that like playing with dolls often enjoy having a base plate and pieces to create houses. Whereas little chiefs that like fast moving "tracks" enjoy the ball runs or motion packs!

## **Why are they more expensive than other brands?**

The quality and safety! Connetix are ultrasonically welded and include rivets for extra safety and have quite strong magnets. They are made from non-toxic, BPA and phthalate free ABS food-grade plastic. They are compatible with other magnetic tiles but often families find other brands magnets not as strong.



# Frequently Asked Questions



## **Will they break?**

In general play, as they are ultrasonically welded and have rivets to reduce breakage, breaking shouldn't happen.

## **How big are the balls in the ball run?**

The balls are 3cm in diameter! Which means they are a choking hazard so please be mindful of little chiefs that like to put things in their mouths.

## **Are they safe?**

Yes! Safety are of the upmost concern at Connetix, which is why they are regularly tested! As mentioned previously, one of the concerns is the size of the ball in the ball run.

## **Will they work with other magnetic tile brands?**

They sure will! However, please be mindful that other brands magnets may not be as strong and therefore may not hold up the Connetix tiles as well.





We love helping  
you choose the  
perfect gift so  
please ask our

*Little Chiefs  
Team*

