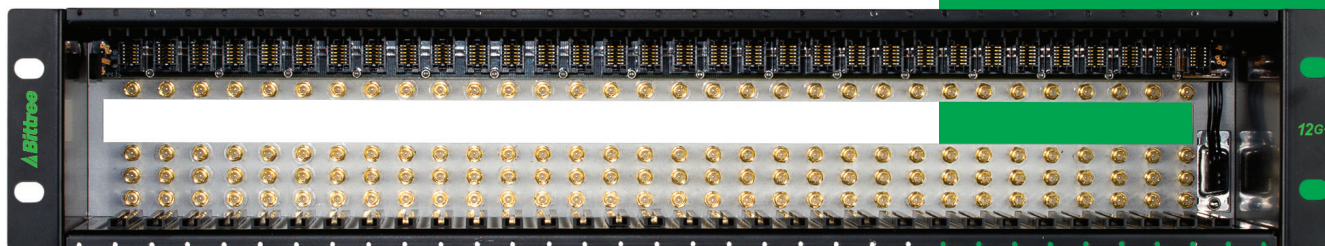


DAF32FX

Bittree

High-Performance Patching Systems



Video Distribution Amplifier Frame

Bittree® DAF32FX Video Distribution Amplifier Frame

For use with DABFX Video Distribution Cards (sold separately)

For use with DAFAN (sold separately)

For use with with DARMI Remote IP confidence status monitoring available with external remote interface box (sold separately)

DAF32FX Video Distribution Amplifier Frame:

- The DAF32FX is a 2RU frame which houses the DABFX video distribution amplifiers
- Up to 32 1-in by 4-out distribution amps per frame
- Compact design offers high module density
- Accepts all Bittree FX modules
- Wideband frame for in/out SFP sd-sdi, and hd-sdi & 4K UHD 12G SDI IP
- See thru plexiglass full front cover allows quick status indication
- Hybrid frame available (*contact Bittree)
- Individual plexiglass card covers available (*contact Bittree)

Mechanical

- Height 3.5 inches (2RU)
- Width 19 inches
- Depth 7 inches
- Nominal Weight 18 lbs. fully loaded

Electrical

- Input Coax and SFP
- Connectors DIN 1.0/2.3, 75 ohm, and SFP
- Number of inputs up to 32
- Number of outputs up to 128

Power

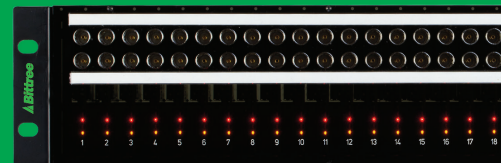
- Type External, 48Vdc Input Voltage 90-264 Vac, 47-63 Hz, Single Phase
- Card slot power independently isolated from each other
- Redundancy N+1, hot swappable modules
- Power Factor >.99
- EMI complies with EN55022 & FCC Class A
- Large capacity power supply available (*contact Bittree)



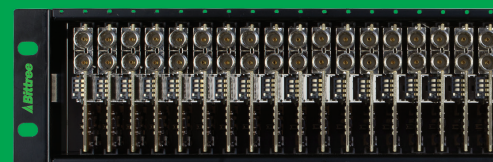
About Bittree:

Established in 1978, Bittree is dedicated to offering state-of-the-art patchbays and patch panels that streamline signal routing and troubleshooting in media and entertainment operations of all sizes.

The company offers an innovative line of audio, video, and data patchbays for use in broadcasting, postproduction, and pro A/V operations. Tailored for use in the post-production, pro A/V, systems integration, and radio and television broadcasting fields, Bittree's patching solutions are rigorously tested to ensure long-term functionality and dependability, especially for mission-critical operations and live events. To ensure consistency, performance, and adherence to rigid quality standards, all of the company's patching products are designed, assembled, and tested in its state-of-the-art facility in Glendale, California. Bittree is an active member of industry trade organizations NAB (National Association of Broadcasters), NAMM (National Association of Music Merchants), and SMPTE (Society of Motion Picture & Television Engineers). For more information, please visit www.bittree.com.



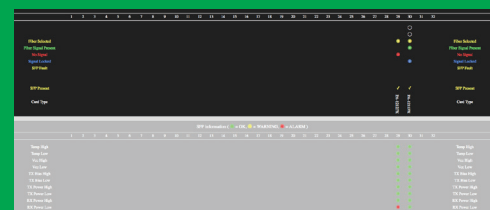
Front - Fully loaded frame with Acrylic Cover



Front - Fully loaded frame



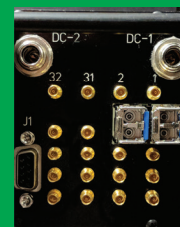
Rear - Fully loaded frame



*Remote IP confidence status monitoring



*Individual plexiglass



*Hybrid frame



Bittree, Inc.
600 W Elk Ave,
Glendale, CA
91204 USA



Bittree.com