

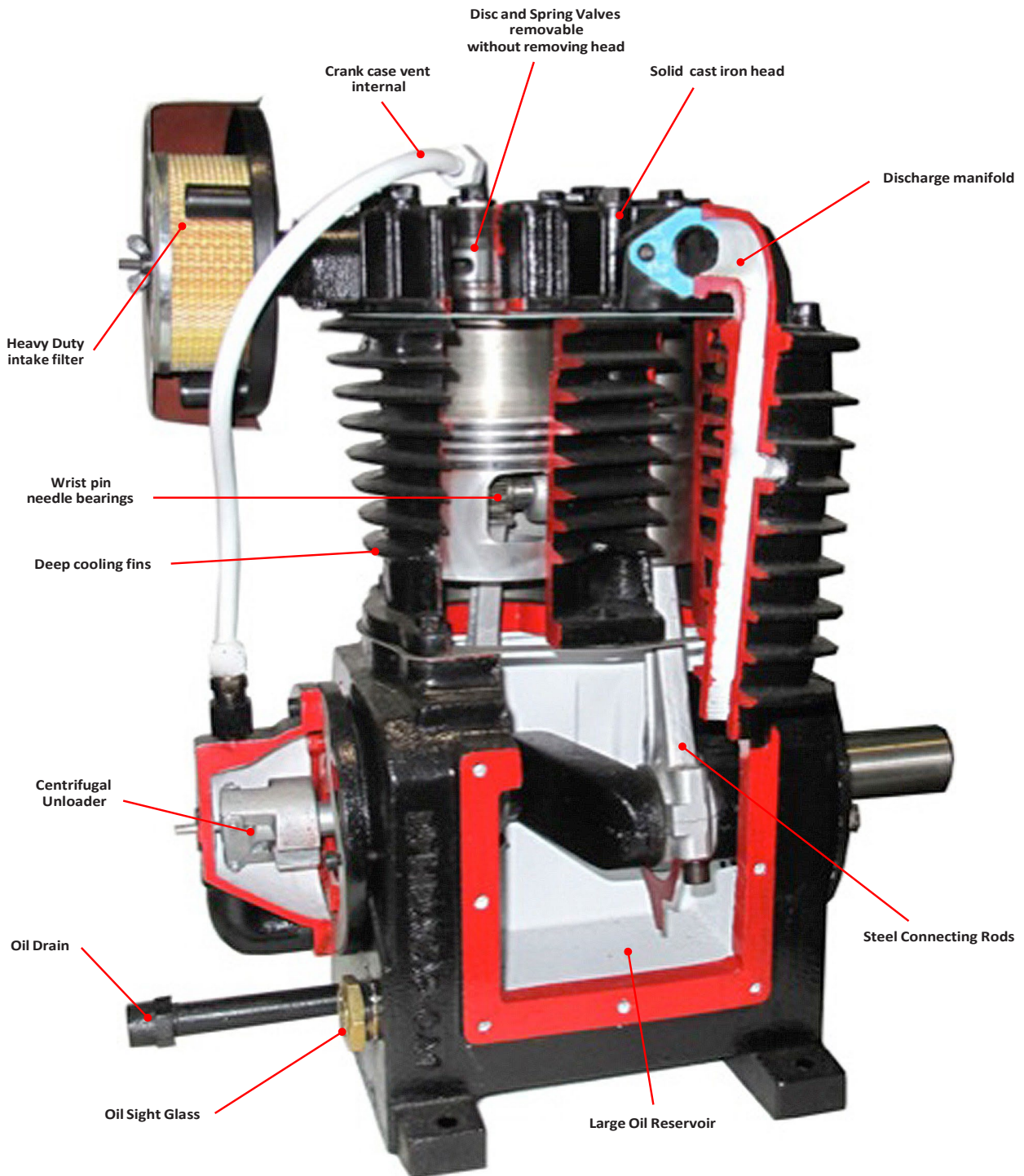
- | | |
|--|---|
| A. Automatic & manual tank drain | K. Stainless steel flexible air lines |
| B. Discharge ball valve | L. Solid cast discharge air manifold |
| C. Battery mounting box & bracket | M. Disc and spring valve compressor pump |
| D. Battery mounted & wired | N. Two stage compressor pump |
| E. Package controls protected by base plate | O. Centrifugal unloader |
| F. 4 drive engine options, gas, diesel, natural gas, hydraulic | P. Easy access oil drain port |
| G. Solid steel & wire grate belt guard | Q. Independent generator welder belt tensioning base |
| H. Aluminum belt guard air after cooler | R. No package controls unprotected on the front of the tank |
| I. Multifunction generator welder head | S. JIC O-ring seal check valve easy access |
| J. Generator welder head independent mounting base | T. Vibration mounting pads |

Note: Sheets are meant for comparison only. Features on any of the compressors listed may change at any time due to manufacturing changes.

AA American Automotive Compressor-Welder-Generator Features

Included In Package		AA American Automotive 96-3N1 Comp-Gen-Weld	Mi-T-M AGW Comp-Gen-Weld	Vanair Air n Arc 150 Comp-Gen-Weld	Boss Work Master GW Comp-Gen-Weld
1	Automatic & manual tank drain	Yes	No	No	No
2	Discharge ball valve	Yes	No	Yes	No
3	Battery mounting box & bracket	Yes	No	No	No
4	Battery mounted & wired	Yes	No	Yes	No
5	Package controls protected by baseplate	Yes	No	Yes	Yes
6	4 drive engine options, gas, diesel, natural gas, hydraulic	Yes	No	No	No
7	Solid steel & wire grate belt guard	Yes	Yes	Yes	Yes
8	Aluminum belt guard air after cooler	Yes	No	No	No
9	Multifunction generator welder head	Yes	Yes	Yes	Yes
10	Generator welder head independent mounting base	Yes	No	No	No
11	Stainless steel flexible air lines	Yes	Yes	Yes	Yes
12	Solid cast discharge air manifold	Yes	No	No	No
13	Disc and spring valve compressor/pump	Yes	No	No	No
14	Two stage compressor pump	Yes	Yes	No	No
15	Centrifugal unloader	Yes	No	No	No
16	Easy access oil drain port	Yes	Yes	Yes	Yes
17	Independent generator welder belt tensioning base	Yes	No	No	No
18	No package controls unprotected on the front of the tank	Yes	No	Yes	Yes
19	JIC o-ring seal check valve easy access	Yes	No	No	No
20	Vibration mounting pads	Yes	No	No	No
21	19 cfm @ 175 psi	Yes	No (Only 16.3 cfm)	No (20 cfm @150 psi)	No (13.1 cfm @ 100 psi)
22	210 Amp welder	Yes	No (Only 170 amp)	No (Only 190 amp)	Yes
23	5000Watt running generator	Yes	Yes	No (4200 watt)	No (4000 watt)

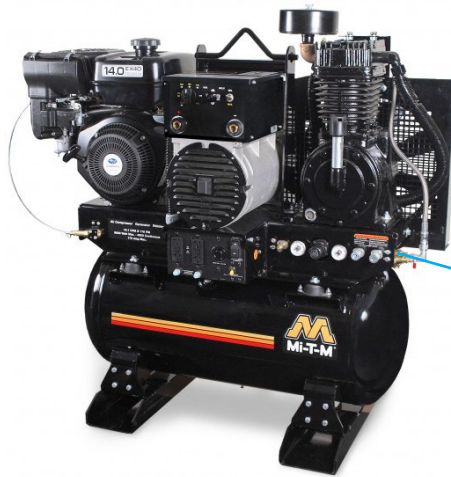
Compressed Air Systems Pump Features



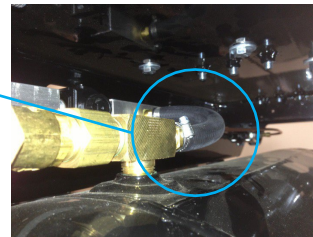


**AA American Automotive
Compressor/Generator/Welder**

Mi-T-M AGW or John Deere



Note: Air discharge from compressor pump and air discharge from tank are the same port. Tank discharge is rubber hose with barbed connection. This line is not protected from compressor discharge heat by cooler, leading to a high probability of damage from heat. Line is not easily accessible for repair.



Vanair Air n Arc 150



Boss Work Master GW

