

THE BEST OF

LONDON

DISCOVER LONDON'S HIDDEN GEMS

BEST OF ENGLAND

CHAPTERS

1. EDITOR'S PICKS
2. CENTRAL
3. SOUTH WEST
4. NORTH & NORTH WEST
5. WEST
6. EAST
7. INDEX



BEST OF ENGLAND THE BEST OF LONDON

Welcome to our latest guide to London. This book makes the perfect companion for exploring our beautiful capital and discovering London's hidden gems.

Best of England is a small, independent British company aiming to make the best quality, most useful and beautiful guidebooks we can. We also strive to champion other small businesses that are as passionate about their products as we are.

Just so you know, we print our books in England with FSC certified paper from responsible sources and use eco-friendly packaging. We selected the Royal Mail to deliver our books, as we think it is better for the environment to use the postman over delivery vans.

You may wonder how we decide which places to feature in our guides. We do our research and speak to the people who live there, we believe there is nothing better than local knowledge and we back this up by visiting each place ourselves.

We are always looking for new places to explore and ways to improve so, if you have any suggestions or feedback, please let me know. I have included my email address below.

Otherwise, I hope you enjoy this book and happy travels.



Simon Ridgwell
Editor | Best of England
simon@bestofengland.com

CHAPTER ONE

EDITOR'S PICKS

BEST OF ENGLAND





Primrose Hill

SEE P31 | . | EDITOR'S PICK

With such a pretty name, Primrose Hill doesn't disappoint on the aesthetics. Far-reaching views of London make this little green hamlet a preferred picnic and kite-flying spot for locals and tourists alike.



Borough Market

SEE P38 | . | EDITOR'S PICK

Borough Market is rich with history and today it remains as significant as it has ever been. As London's oldest food market, it has been serving London for 1,000 years. Traders have built their reputations on seeking out artisan producers and bringing the highest calibre produce to Borough.



Tate Modern

SEE P59 | . | EDITOR'S PICK

Tate Modern is a gallery that does what it says on the tin, even down to finding its home in a former riverside power station – an icon of development and hallmark of modern times. Inside its prestigious doors, you'll find an inspiring collection of contemporary artworks in unique galleries spread across multiple floors.



Carnaby Street

SEE P159 | . | EDITOR'S PICK

Carnaby Street was the epicentre of Swinging London back in the 1960s. A colourful fusion of cultures and stylish individuals sought out inspiration and creativity here. Today Carnaby Street is a welcome escape from the relentless traffic and crowds of Oxford Street and Regent Street, a block away.





Bermondsey

SEE P233 | . | EDITOR'S PICK

Known for its revamped brick-fronted warehouse buildings, food and art scenes, Bermondsey epitomises the urban good life for the modern Londoner. Colourful independent shop fronts mix in well with the cobbled streets and the industrial railings of converted warehouse flats.



Wimbledon Village

SEE P91 | . | EDITOR'S PICK

Located next to the famous Wimbledon Common and close to the home of the world-famous tennis championships, Wimbledon Village feels like a countryside location thanks to its leafy surrounds, chichi boutique stores, period buildings, flower shops and a vibrant Cafe culture.



The Saatchi Gallery

SEE P98 | . | EDITOR'S PICK

Situated just off the buzzing King's Road in Chelsea, the Saatchi Gallery has presented contemporary art exhibitions showcasing the work of emerging artists since 1985 and is now a recognised authority in contemporary art globally.



Richmond Hill

SEE P111 | . | EDITOR'S PICK

Richmond Hill offers some of the most idyllic panoramic views over London. With Petersham meadows and the River Thames meandering below, the hill begins in the town and elevates to a point within Richmond Park.





Kew Gardens

SEE P114 | . | EDITOR'S PICK

Royal Botanic Gardens Kew, known simply as Kew Gardens, boasts over 50,000 plant varieties and is a Unesco World Heritage Site. Experience the rainforest in one of the beautiful temperate houses, admire the views from the Great Pagoda or explore the tree canopy on the tree-top walk.



Coal Drops Yard

SEE P126 | . | EDITOR'S PICK

Amid the cool of King's Cross, you'll find Coal Drops Yard, where Victorian viaducts have become one of the trendiest spots to shop in the capital city. But there's more to this place than meets the eye, with a thriving live music scene.



St Pancras Brasserie

SEE P128 | . | EDITOR'S PICK

St Pancras Brasserie by Searcys transports you back to the Golden Age of travel, with old station clocks on the walls and leather booths lit by vintage-inspired lighting. Watch the trains coming and going from Paris underneath the impressive architectural structure of Kings Cross St.Pancras International Station.



Helix at The Gherkin

SEE P21 | . | EDITOR'S PICK

Helix offers sky-high dining at the top of the iconic Gherkin tower. With panoramic views over a twinkling London below, this is an elevated restaurant offering striking views of London from its vertiginous glass surrounds.





Portobello Road

SEE P145 | . | EDITOR'S PICK

Based in the heart of Notting Hill, Portobello Road claims to be the world's largest antiques market with over 1,000 dealers selling every kind of antique and collectable. Visitors come from all over the globe to discover unique gems to take home with them.



Alexandra Palace

SEE P130 | . | EDITOR'S PICK

Alexandra Palace is known around the world as the birthplace of television. It was chosen primarily for its height, being 306 feet above sea level. It was never owned by the BBC, but in 1935 the Corporation leased the eastern part of the building from which the first public television transmissions were made.



Randall & Aubin

SEE P157 | . | EDITOR'S PICK

Randall & Aubin opened on Brewer Street in the heart of Soho in 1996 and has been somewhat of an institution ever since. Champagne sparkles under the glitter ball and glass chandeliers, and a lively soundtrack of eclectic music adds to the effervescent atmosphere.



Circolo Popolare

SEE P168 | . | EDITOR'S PICK

Circolo Popolare is an atmospheric Sicilian trattoria in the heart of London's lively Fitzrovia district. This is an Instagram favourite thanks to its dazzling, colourful interior with plants and flowers cascading down from the ceiling, entwined with twinkling lights.





Daunt Books

SEE P178 | . | EDITOR'S PICK

Set in the heart of Marylebone on its high street, Daunt Books is housed in an original Edwardian building. Daunt, first known for its focus on travel books, stocks a wide range of fiction and non-fiction titles.



Marylebone

SEE P179 | . | EDITOR'S PICK

Marylebone is an ode to Georgian architecture. This is typified by the famous mansion which houses Wallace Collection, and also Marylebone High Street with its chic boutiques and restaurants.



Regent's Canal

SEE P122 | . | EDITOR'S PICK

Stretching from Paddington through Little Venice all the way East to Docklands, Regents Canal, once a cargo waterway, has a far more leisurely pace today. Navigate through tree-lined canals to the vibrant and eclectic Camden Lock area, admiring London Zoo as you pass the giraffe enclosure.



The Serpentine

SEE P183 | . | EDITOR'S PICK

If Hyde Park was a movie, then the Serpentine would take the starring role. Visitors flock from far and wide to walk its perimeter, row or even swim its waters in this Central London open-air hotspot. For those who prefer to enjoy alfresco entertainments at a gentler pace, there are boat trips and waterside restaurants.





Neal's Yard Dairy

SEE P52 | | EDITOR'S PICK

Founded in Covent Garden in 1979 by Randolph Hodgson, Neal's Yard Dairy is artisanal cheese retailer offering some of the best cheeses produced in the UK and Ireland. The store is set within an old warehouse in Borough Market and exudes atmosphere with its high ceilings, industrial style and bustling ambience.



Hammersmith

SEE P190 | | EDITOR'S PICK

Hammersmith is most famous for its Lyric Theatre, Apollo entertainment venue and the iconic Hammersmith Bridge which crosses the River Thames. The bridge links Hammersmith to Barnes and the walks on the river paths nearby offer scenic views over this busy part of the river.



Spitalfields Market

SEE P202 | . | EDITOR'S PICK

Spitalfields Market is East London's most historic traders' market showcasing some of London's most cutting-edge fashion and original artwork alongside artisan food and distinctive interior designs. A melting pot between the City's wealth and the charming character of the East End.



Columbia Road

SEE P215 | . | EDITOR'S PICK

Best known for its Flower Market, Columbia Road is a treasure trove of colour, scent and independent shops. The heady perfume of flowers, plants and foliage fills the air on Sundays, its market day. Stop off for a coffee, stock up on goodies in a deli or hunt out a bargain in one of the antique shops.



CHAPTER TWO

CENTRAL LONDON

BEST OF ENGLAND



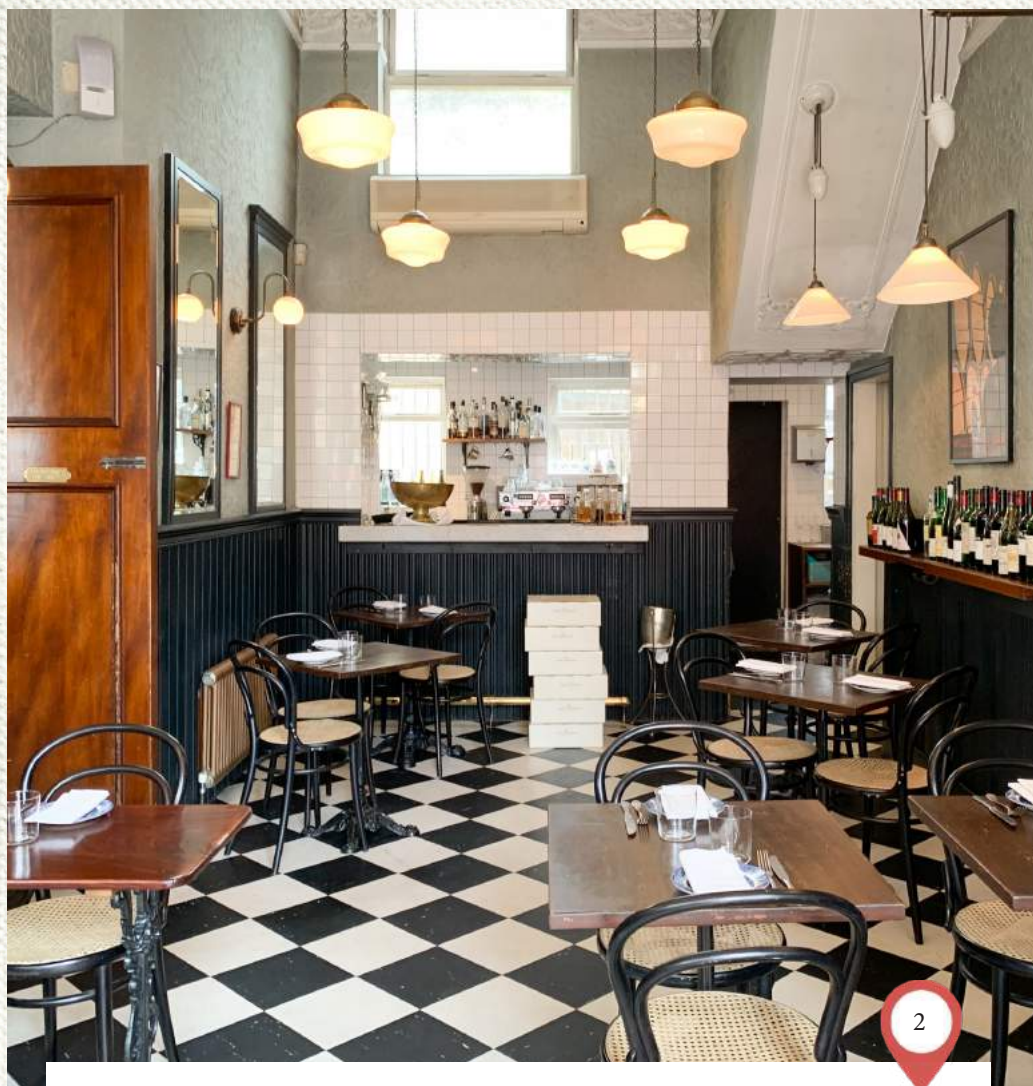


Farringdon

101 Turnmill St, Farringdon, EC1M 5QP

Often overlooked, this nook of London nestled between Barbican and St Paul's has a lot to offer from unusual history to excellent bars and restaurants. Regarded as the grown-up version of Shoreditch, this is a popular place to live and work. Converted brick fronted warehouses give off a contemporary vibe in this historic part of London.

Named after a fern covered hill, Farringdon is still a part of London's financial centre but more like it's more hip cousin and famed mostly for Smithfield Meat Market and world-class nightclub Fabric.



The Quality Chop House

88 Farringdon Rd, Farringdon, EC1R 3EA

Built in 1869, The Quality Chop House re-opened in 2012. Grade-II listed Victorian decor sets the scene of the interior and contrasts with the modern approach to innovative cooking; with a focus on the finest carnivorous ingredients the British Isles provides. The Dining Room offers larger booths for bigger groups and the smaller Bar Room features more intimate tables.

The Dining Room offers larger booths for bigger groups and the smaller Bar Room features more intimate tables.



Exmouth Market

Exmouth Market, Farringdon, EC1R 4QL

Exmouth Market is a regenerated, pedestrianised street with an impressive array of delicious food stalls. Positioned within walking distance of Farringdon, Clerkenwell, creatives and office workers gather here for long lunches away from the office.

There is also a weekday market dedicated to innovative street vendors who bring global cuisine to London's foodies. This bustling hub is only enhanced by the trendy cafes, coffee shops, pubs and outside eateries that line the colourful street and give the area an almost continental ambience.

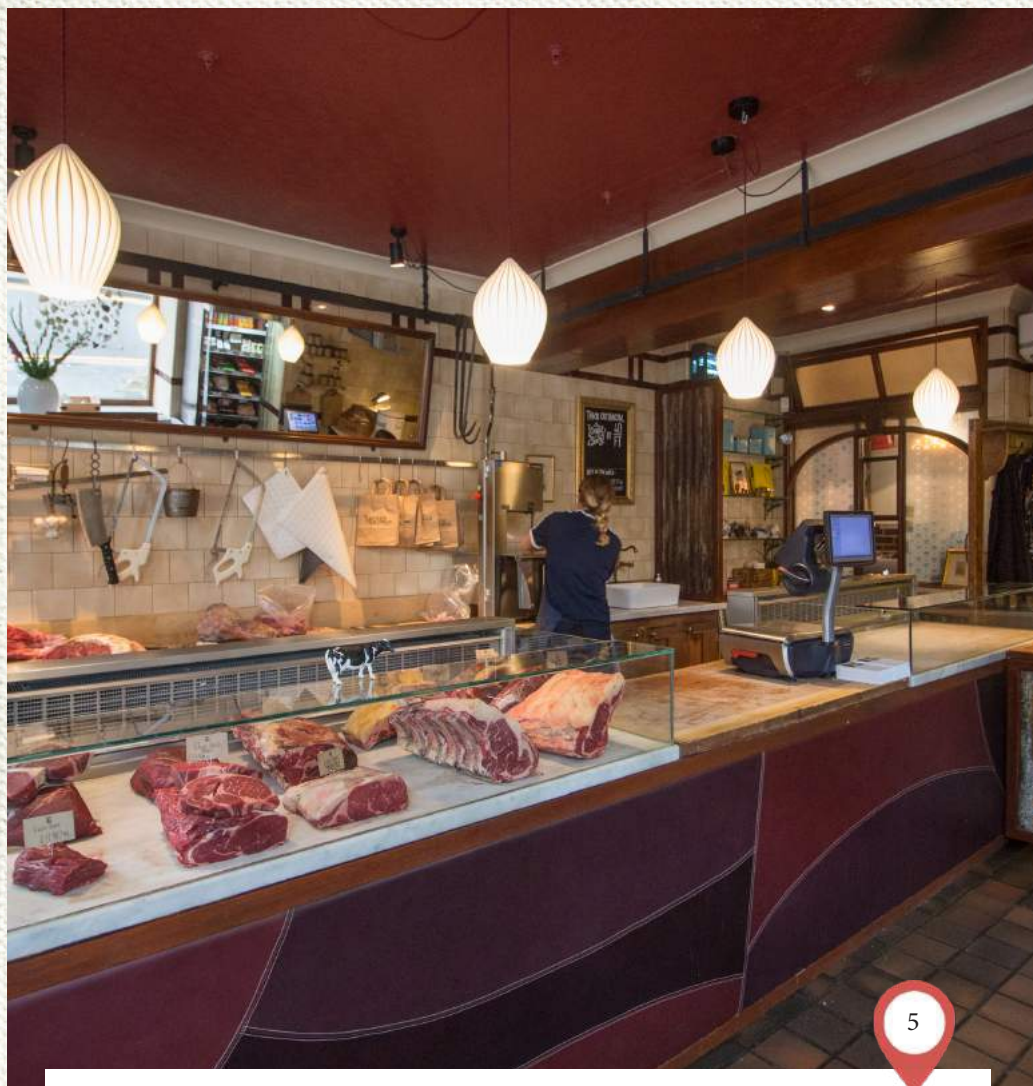


The Exmouth Arms

23 Exmouth Market, Farringdon, EC1R 4QL

The Exmouth Arms in Exmouth Market is surrounded by trendy independent stores and is the perfect place to stop off for a drink. The pub has an atmospheric interior with its dark leather banquettes, brick walls, stained glass and oxblood red highlights.

This is a traditional pub with a focus on craft beers.



5

Turner & George

399 St John St, Clerkenwell, EC1V 4LD

Finding a butcher written about in guide books is a bit of a rarity, but pay one visit to Turner & George and you'll understand why. Fuelled by a foodie passion and founded on quality steaks, two forward-thinking carnivores created Turner & George, where meat is dry-aged for superior flavour.

Every cut can be traced back to the farm and rare breeds find their place among the household favourites.

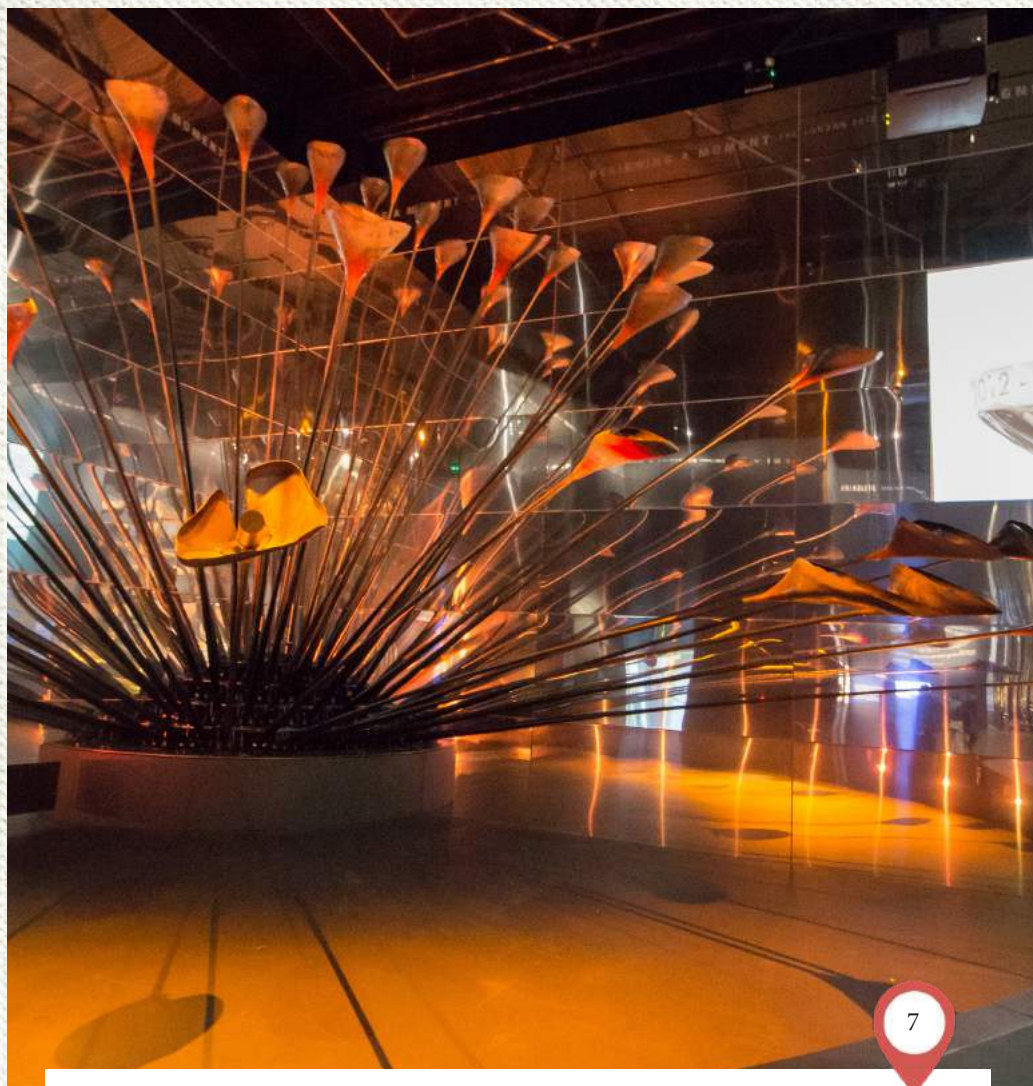


Attendant

Great Eastern St, Hackney, EC2A 3JL

Refuel and gather one's thoughts, they say at Attendant. And that is exactly what people do. A local hub full of fresh coffee and locally sourced food served up in a feel-good atmosphere, where people come to escape the hustle and noise of the outside world.

The living wall and green and white subway tiles are part of its trademark. As are the copper pendant lamps and the zinc bar, which presides over the room.



The Museum of London

50 Wall, Barbican, EC2Y 5HN

Roaming between landmarks isn't the only way to learn more about London's history. The Museum of London provides a free-to-visit timeline of the capital city, transporting the curious through the Roman times, the Medieval period and the Industrial Revolution, before landing slap bang in modern times with a sculpture from the 2012 Olympics, which were held in the city.

A dynamic events schedule completes the picture and makes this lesser known museum well worth a visit.

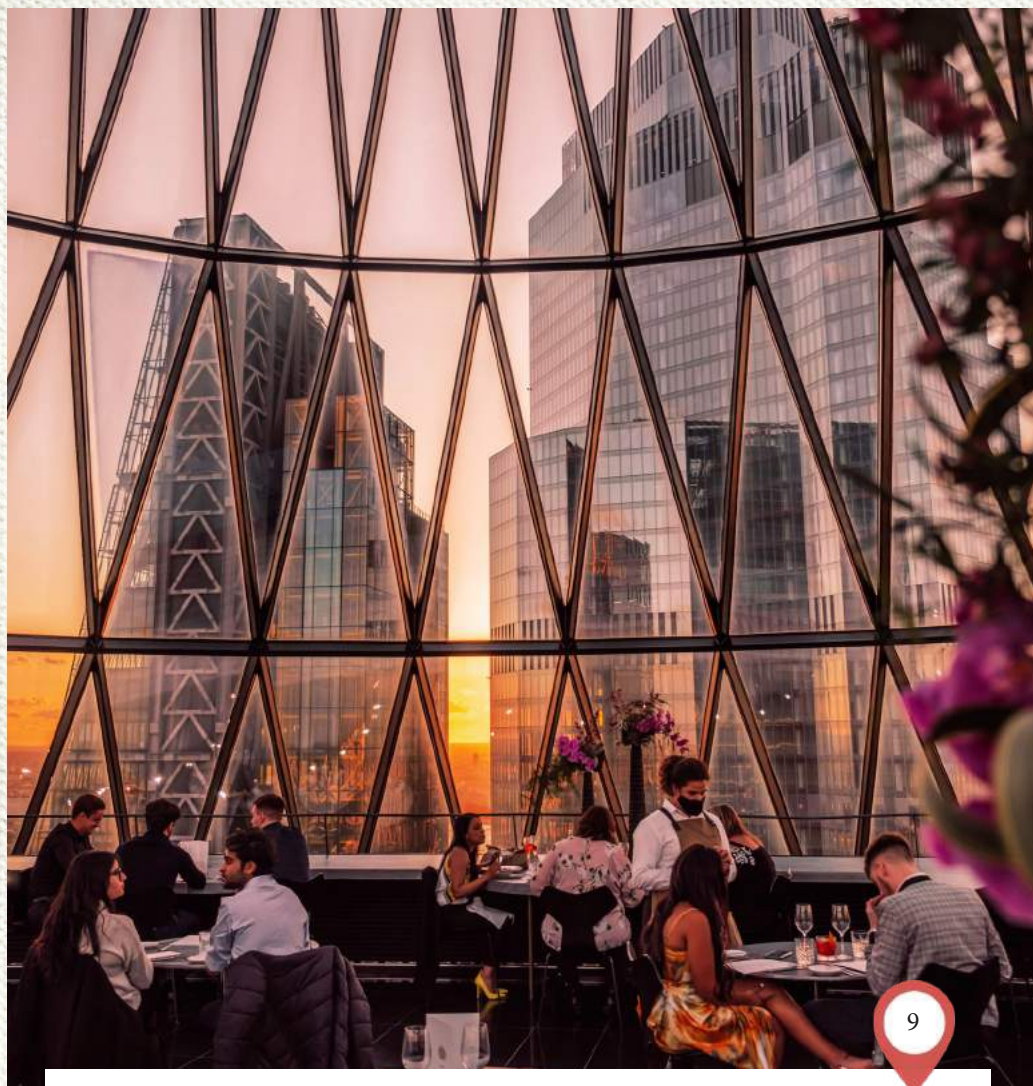


The Gherkin

30 St Mary Axe, EC3A 8BF

A bold piece of architectural punctuation for the London skyline, The Gherkin holds its own amid the city's skyscrapers with its distinctive shape and dramatic glazing. The building combines the best of work and play, with both office space and a range of restaurants.

Dine in the sky at HELIX by Searcys or join the high flyers and enjoy drinks at the Iris Bar. This London landmark is easily reached on the tube.

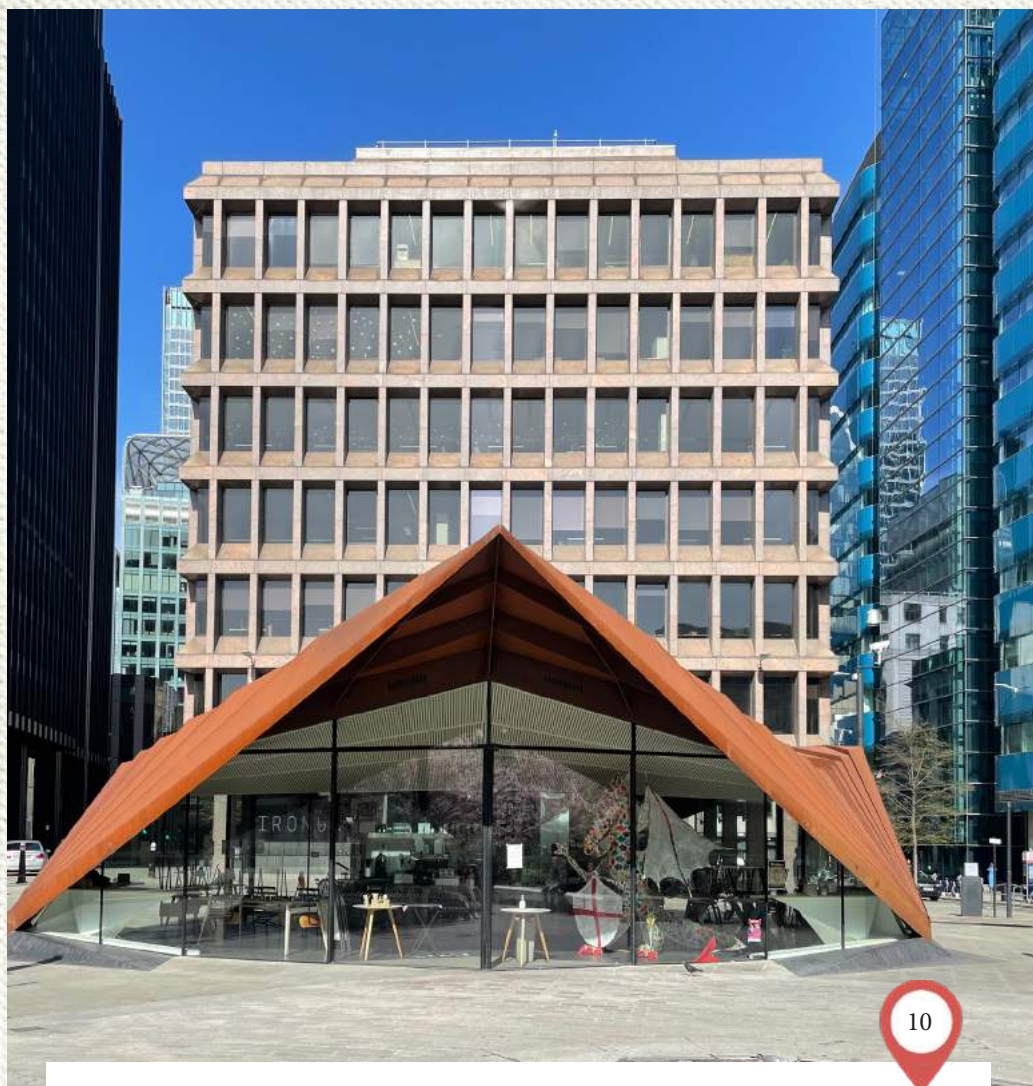


Helix at The Gherkin

30 St Mary Axe, EC3A 8BF

Helix offers sky-high dining at the top of the iconic Gherkin tower. With panoramic views over a twinkling London below, this is an elevated restaurant offering striking views of London from its vertiginous glass surrounds.

Whether you fancy a special afternoon champagne tea or atmospheric dinner, the ambience and breathtaking views are rather magical. The menu focuses on modern British dishes and seasonal produce.

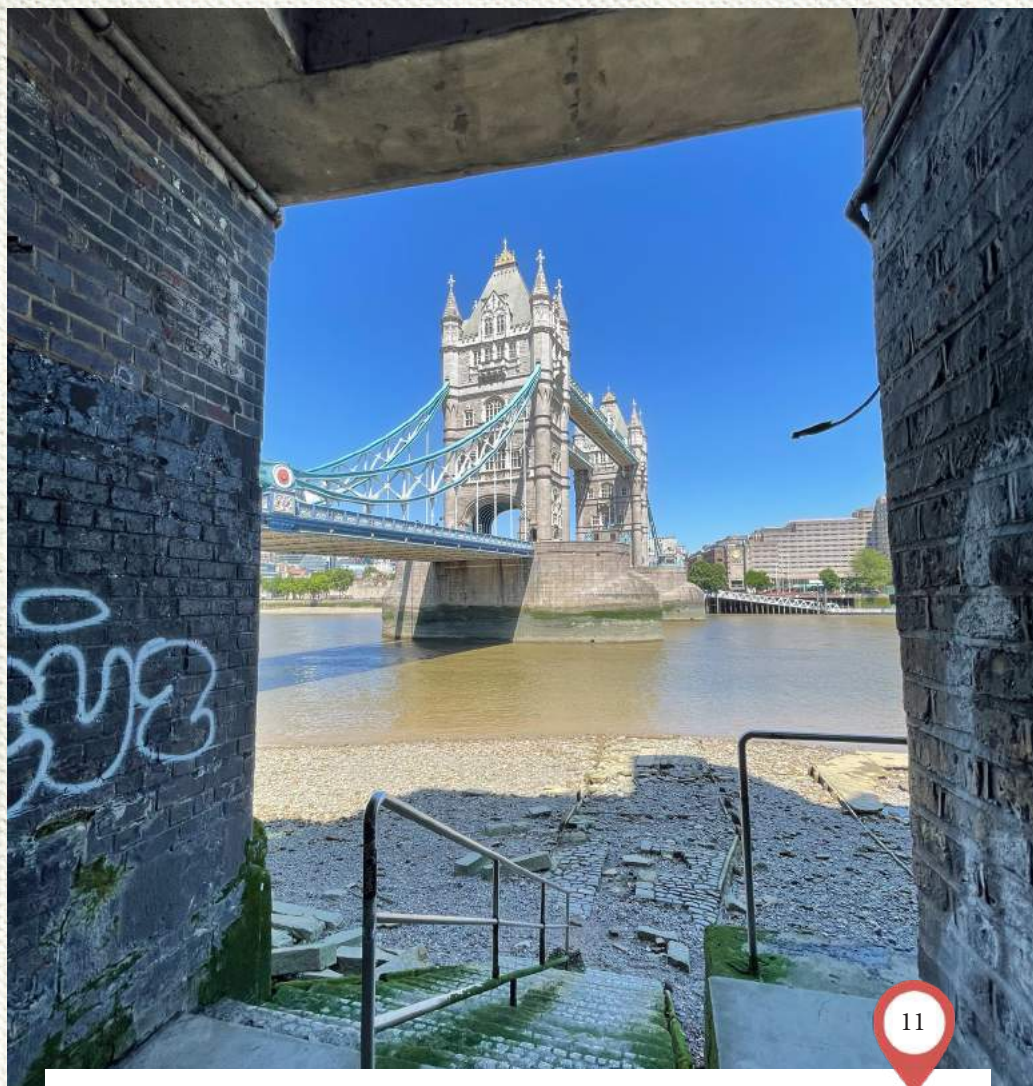


Aldgate Square

Aldgate High Street, EC3N 1AF

Replacing a busy road junction as part of a regeneration and landscaping project, Aldgate Square is now one of the largest public spaces in the City of London, and is home to the new Portoken Pavilion. The Pavilion provides a relaxing space for events and leisure and includes the social enterprise Cafe, Kahaila.

The square has a raised grass bed where visitors often sit and enjoy this pristine pocket park with a picnic or take-away lunch.

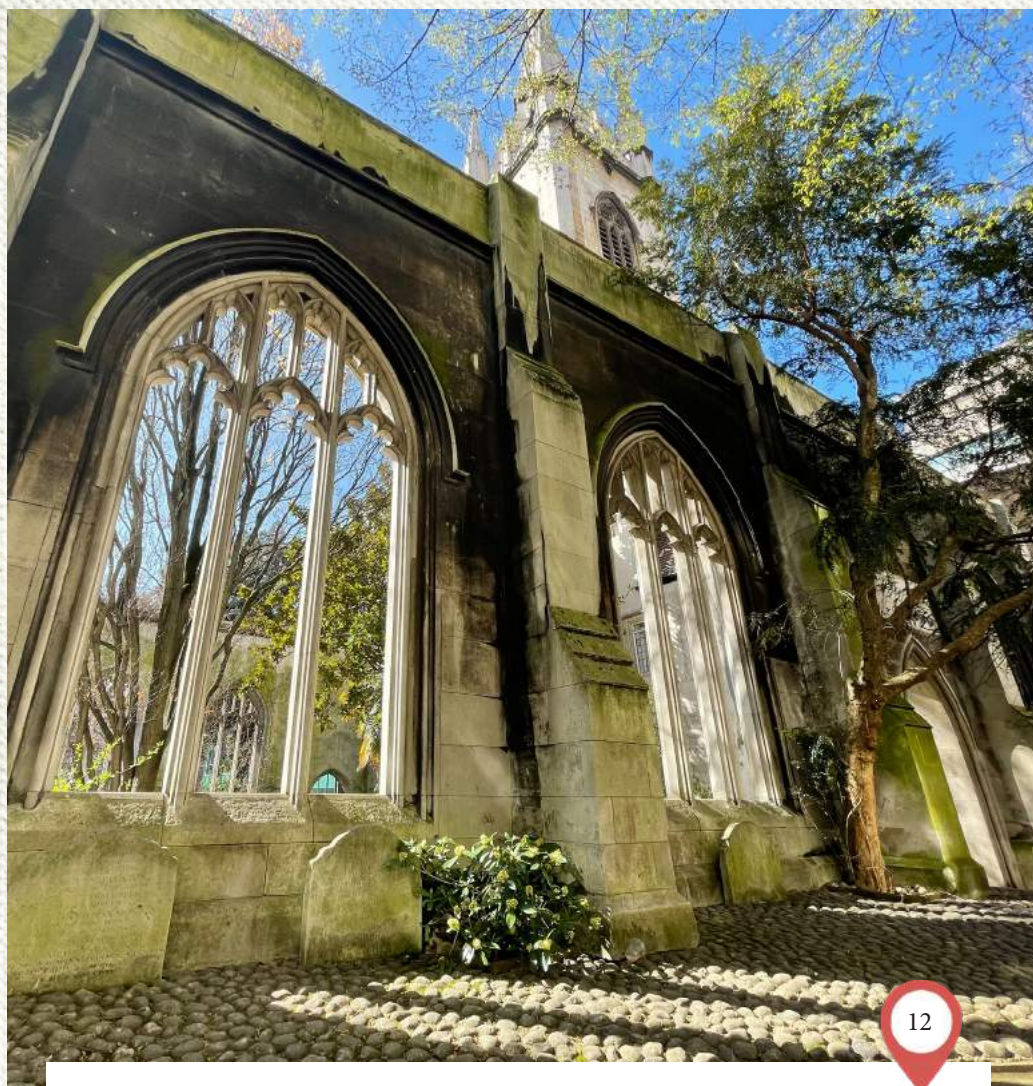


Tower Bridge Beach

St Katharine's & Wapping, EC3N 4DT

Originally built to provide a seaside holiday experience for working-class Londoners who could not afford to go to the seaside, the Tower Foreshore by Tower Bridge proved to be a great success when it was first opened to the public in 1934. Roughly 1500 tons of sand were laid to create London's very own seaside, attracting more than half a million visitors within the first few years of its creation.

However, as tastes changed and other opportunities arose, the Foreshore's attraction faded. Now, this once golden shoreline exists more as an historical artefact than a place to bring a bucket and spade.

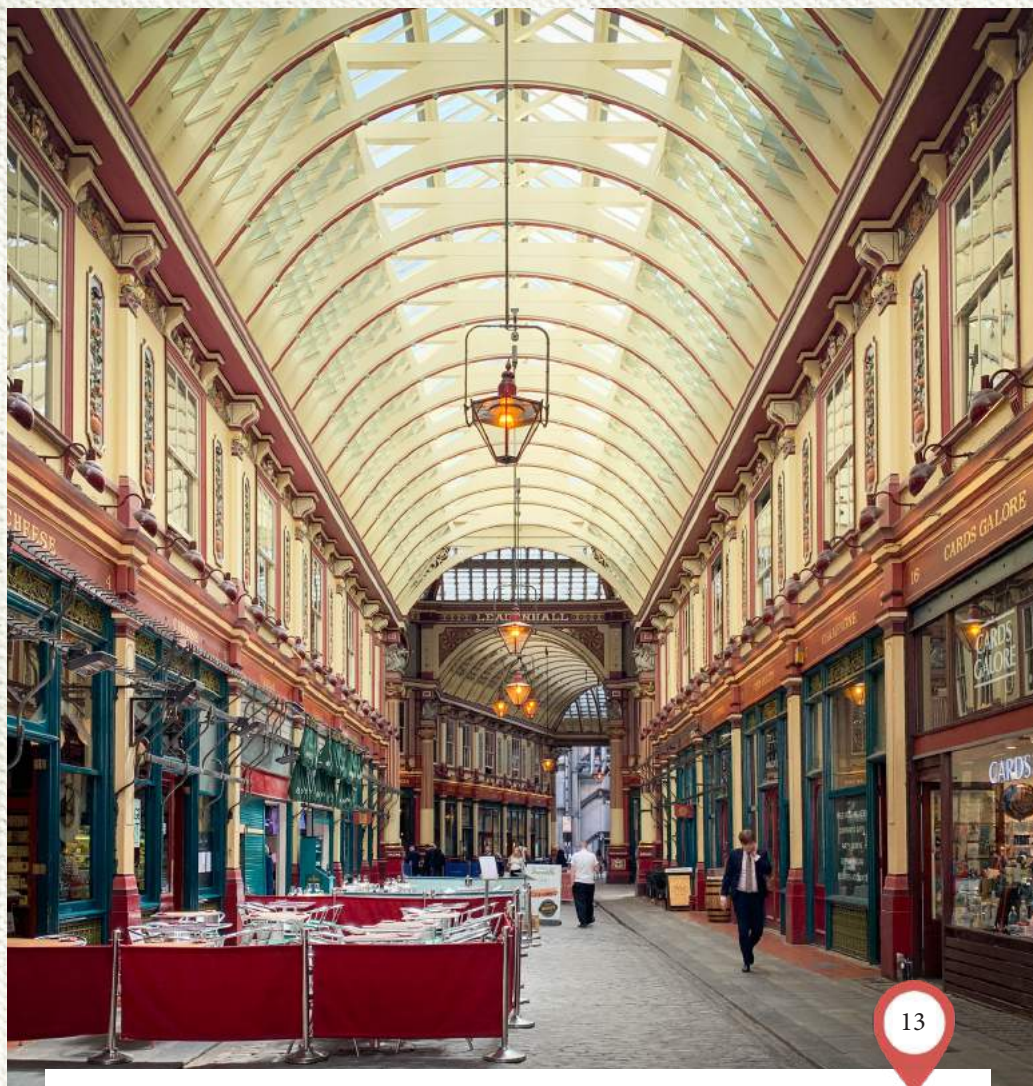


St Dunstan in the East

St Dunstan's Hill, Billingsgate, EC3R 5DD

St Dunstan in the East is reminiscent of a scene from an enchanting fairy tale. These are the remains of a 900 year old Saxon church. After being badly damaged in the Great Fire of London, Sir Christopher Wren built the church a new tower and steeple, only for it to be bombed during the war in 1941.

Tranquil public gardens weave in and out of the serene church remains, which are surrounded by trees and draped with cascading flowers and creeping vines. The gardens contrast with the contemporary steel structures of the City, and make St Dunstan in the East an even more peaceful oasis.



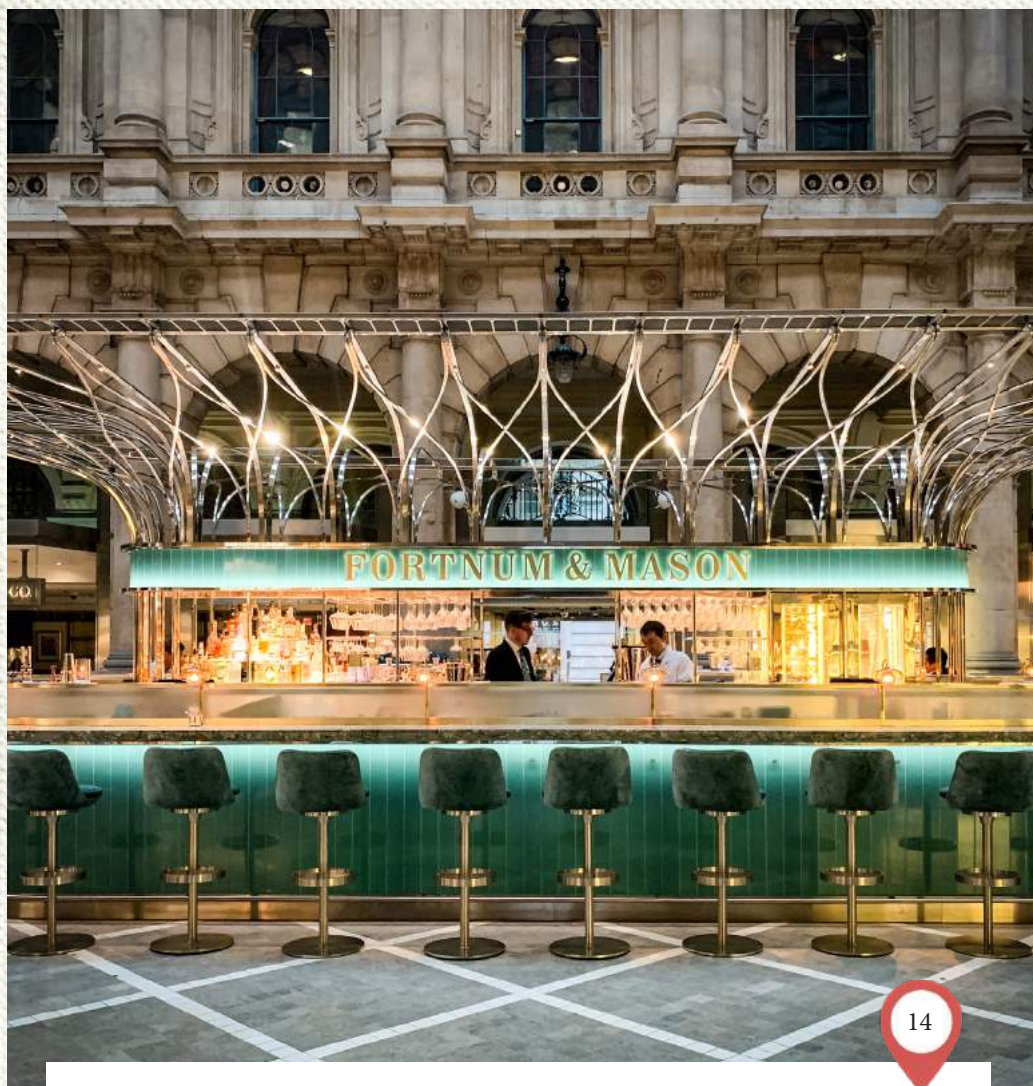
13

Leadenhall Market

Gracechurch St, EC3V 1LT

Setting the standard among London marketplaces is Leadenhall Market. It is housed in an elegantly glazed building with domed walkways, detailed cornices and lantern lighting on Gracechurch Street.

The historic space brings together both heritage brands and professions, from high-end garment stores to humble shoe shine stalls - a proud evolution from its beginnings in 1321 to its present day, featuring in star-studded segues as a film set.



Fortnum & Mason Bar

The Courtyard, The Royal Exchange, EC3V 3LR

Smart lighting accents the bottle green bar and glistening gold signage around the wine bar at Fortnum and Mason's. With timber-clad walls, the aesthetic dances along the tightrope of the traditional and the now.

The result is an appealingly sophisticated space in which to pull up a seat and pour a glass. But it's not pure indulgence – the experience is practical too; you can sample bottles before you buy.



St Paul's Cathedral

St. Paul's Churchyard, EC4M 8AD

St Paul's Cathedral has set the stage for many significant moments in London's, and indeed Britain's, history. It hosted the wedding of HRH Prince Charles and Diana and serves as a religious centre for the capital city.

Primarily a place of worship, the cathedral also offers a warm welcome to visitors, with sightseeing tours and after-hours opening, allowing you to experience the unique atmosphere and setting first-hand.



The Walbrook Club

37A Walbrook, EC4N 8BS

Join London's elite crowd with a visit to The Walbrook Club, a private members' club exclusively for company directors. Behind the smart front door of the townhouse, the dining rooms within play host to dinner parties and brunches, guest speakers and forums.

You may not get past the front door, but the charming symmetry of the red brick building makes it worth a visit.



Camden Town

Camden High St, NW1 0NE

Situated just north of central London, Camden Town is an eclectic mix of music venues, world-famous markets, international street food stalls and iconic urban artworks. Camden's characteristic grittiness and thriving music scene are reminders of Britain's counter-culture movement of the 1960s and 70s, with iconic venues, such as the Roundhouse, still in operation today.



Primrose Hill

Primrose Hill Road, NW1 4NR

With such a pretty name, Primrose Hill doesn't disappoint on the aesthetics. Far-reaching views of London make this little green hamlet a preferred picnic and kite-flying spot for locals and tourists alike.

Attractive gastropubs and cafes, along with an abundance of independent shops, make it an enticing spot to visit and even to call home, if you're a celebrity.

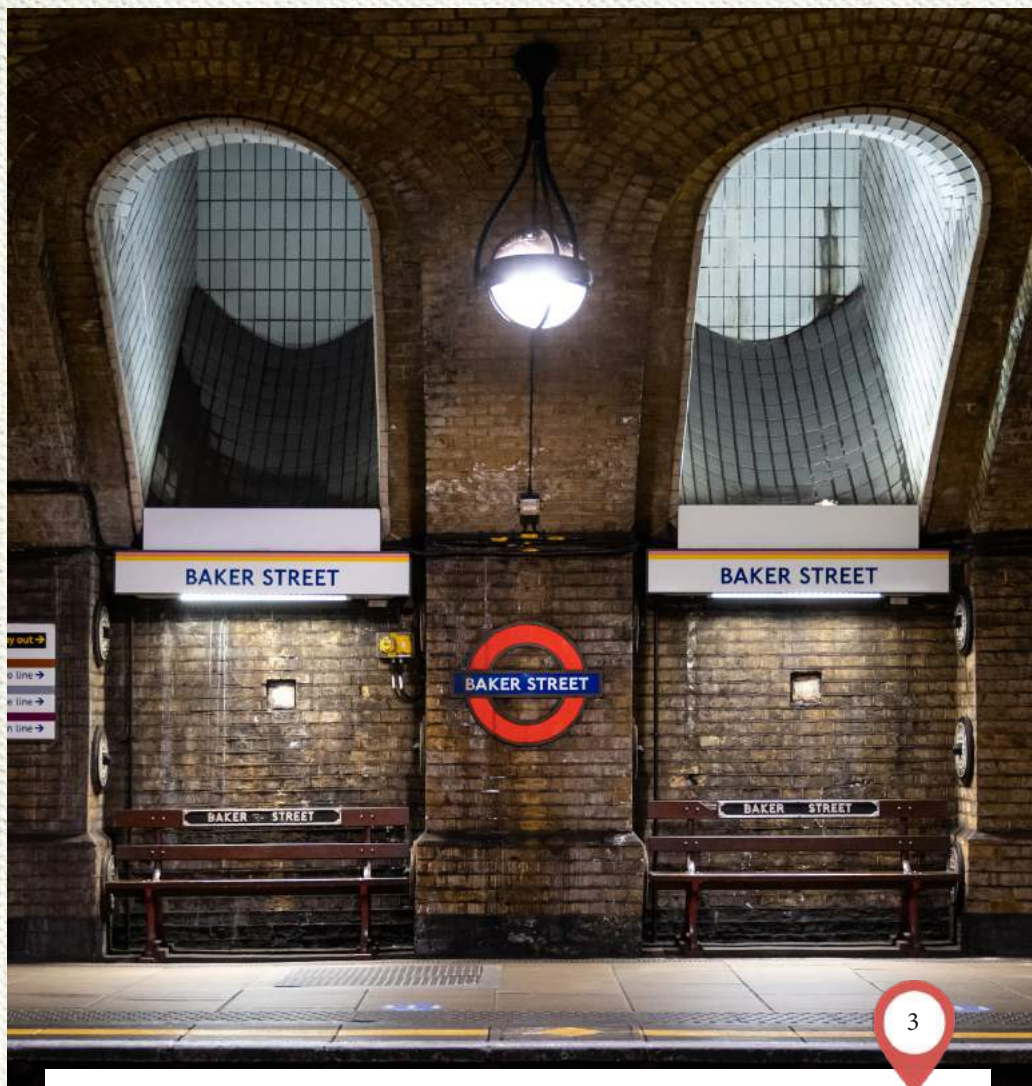


Regent's Park

York Bridge, Inner Cir, NW1 4NU

Regent's Park is named after the Prince Regent, who later became King George IV (1762-1830). The park covers 395 acres and offers a wide variety of amenities, a respected Open Air Theatre, London Zoo, beautiful gardens and a boating lake.

Primrose Hill is separated from Regent's Park by Prince Albert Road and the ZSL London Zoo and it provides spectacular views across London from the top of the grassy hill. Many cafes and restaurants scatter the park and provide scenic locations to rest, enjoy the tranquility or find refreshments after a yoga session or workout.



Baker St. Tube

Marylebone Rd, NW1 5LJ

One of the most iconic original London Tube stations, serving the neighbourhood famed for its intrepid deerstalker hat-wearing and pipe-smoking detective, Sherlock Holmes. The precise use of artificial light through the archways lining the platforms showcases the clever architecture.

Creating shafts of 'light', these simple yet powerful design elements create a unique atmosphere at Baker Street Tube.

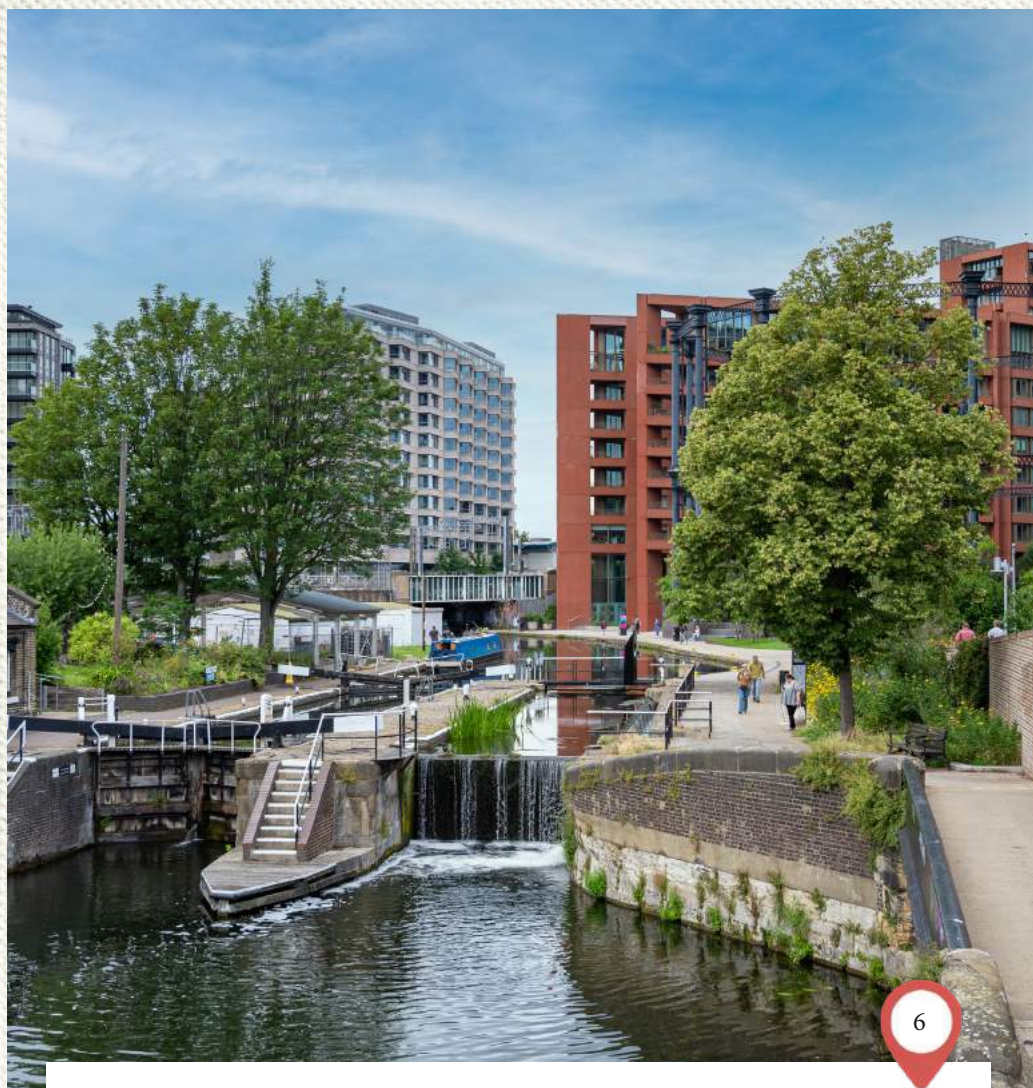


The Sherlock Holmes Museum

221b Baker St, Marylebone, NW1 6XE

In the stories written by Sir Arthur Conan Doyle, the world-famous consulting detective Sherlock Holmes lived at 221b Baker Street between 1881-1904. Mr Holmes shared his rooms with his loyal friend and colleague Dr Watson.

The house is protected by the Government due to its “special architectural and historical interest”.



Camden Locks

Camden Lock Pl, NW1 8AF

Sitting beside Regent's Canal, Camden Lock has evolved from a small pop-up market, containing only 16 craft workshops, into the epicentre of London's artisan trading scene, attracting over 10 million visitors annually. Camden Lock's series of interconnected markets are open 7 days a week, 364 days a year, early until late.

And while it is certainly quieter to visit on a weekday, it is worth noting that not all stalls will be open. The area's long, multi-ethnic and multicultural history is reflected in the wares, drinks and cuisines on offer from all around the globe.



Camden Market

Camden Town, NW1 8AF

Camden Market opened in 1974 and started off as a temporary small arts and crafts fair in the backyard of Dingwalls. Its popularity grew fast and is now the largest market in London, with a diverse community of creative sellers, street food traders and independent stores next to the Regent's Canal. Gin was Camden's biggest export. However, the 1970s saw the end of Camden's industrial heritage and the start of the Market.

Legendary gigs at Dingwalls and the Roundhouse from the 1960s onwards brought rock and punk to London. These were venues beloved by iconic music stars from The Clash and The Sex Pistols to Blondie.



Borough Market

8 Southwark Street, SE1 1TL

Borough Market is rich with history and today it remains as significant as it has ever been. As London's oldest food market, it has been serving London for 1,000 years. Traders have built their reputations on seeking out artisan producers and bringing the highest calibre produce to Borough.

Borough Market is an immersion of colour, scent and vibrant human engagement. From the bakers to the fishermen, there is a passion for culinary excellence with a focus on the Slow Food movement; a low impact approach to food production, emphasising local traditions and customs.

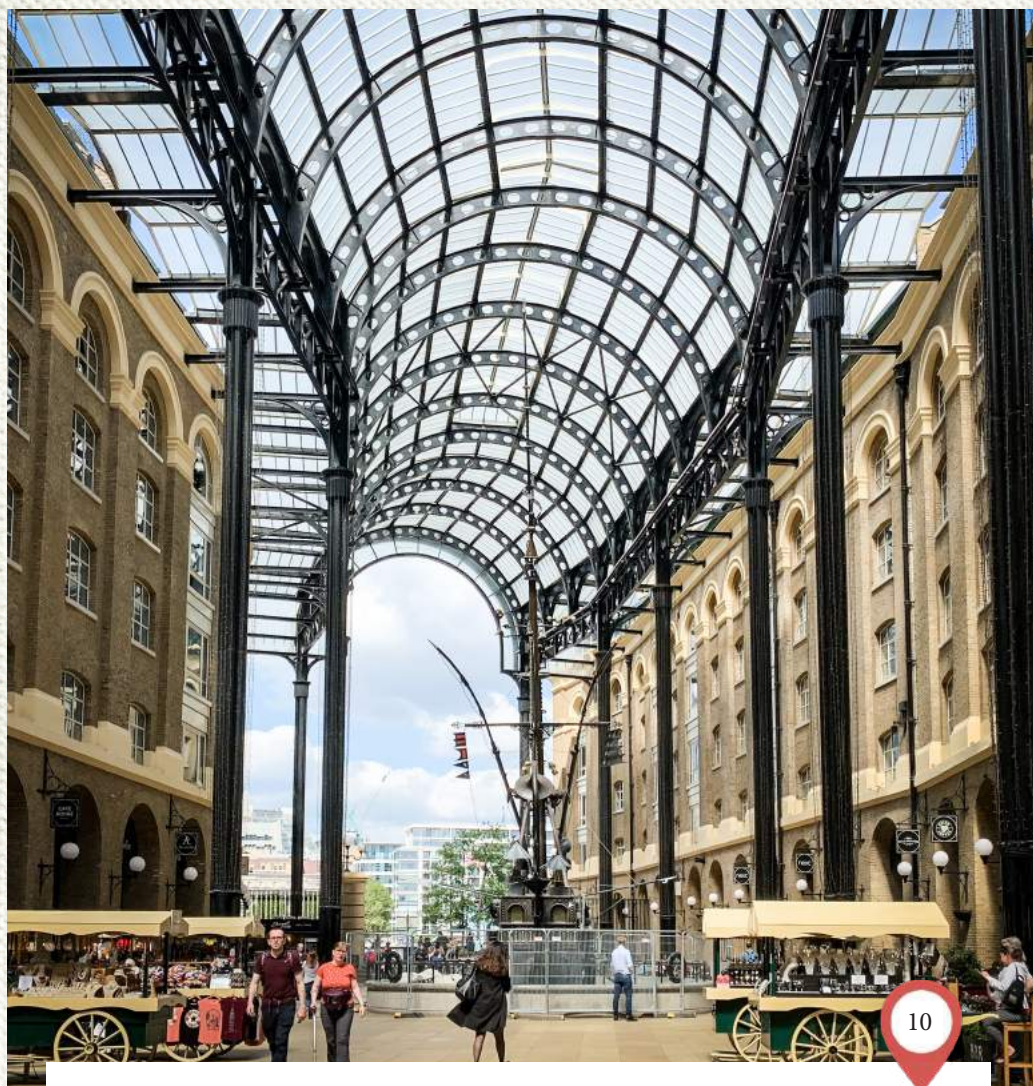


Casa Do Frango

32 Southwark Street, SE1 1TU

Casa do Frango brings Algarvian cuisine to London Bridge. Favourite dishes include piri piri chicken, cooked over wood charcoal, served with carefully selected Portuguese wine.

The rustic interior with its stripped floors, exposed brick walls, high ceilings, atrium roof and vibrant green plants create a calming ambience.



Hay's Galleria

1 Battle Bridge Ln, London SE1 2HD

Hay's Wharf, built in the 1850s became known as the "Larder of London" taking ship deliveries of spices, tea and coffee from all over the world.

Today shops, cafes, restaurants and David Kemp's magnificent kinetic sculpture are housed under the impressive vaulted roof at the striking Hay's Galleria.

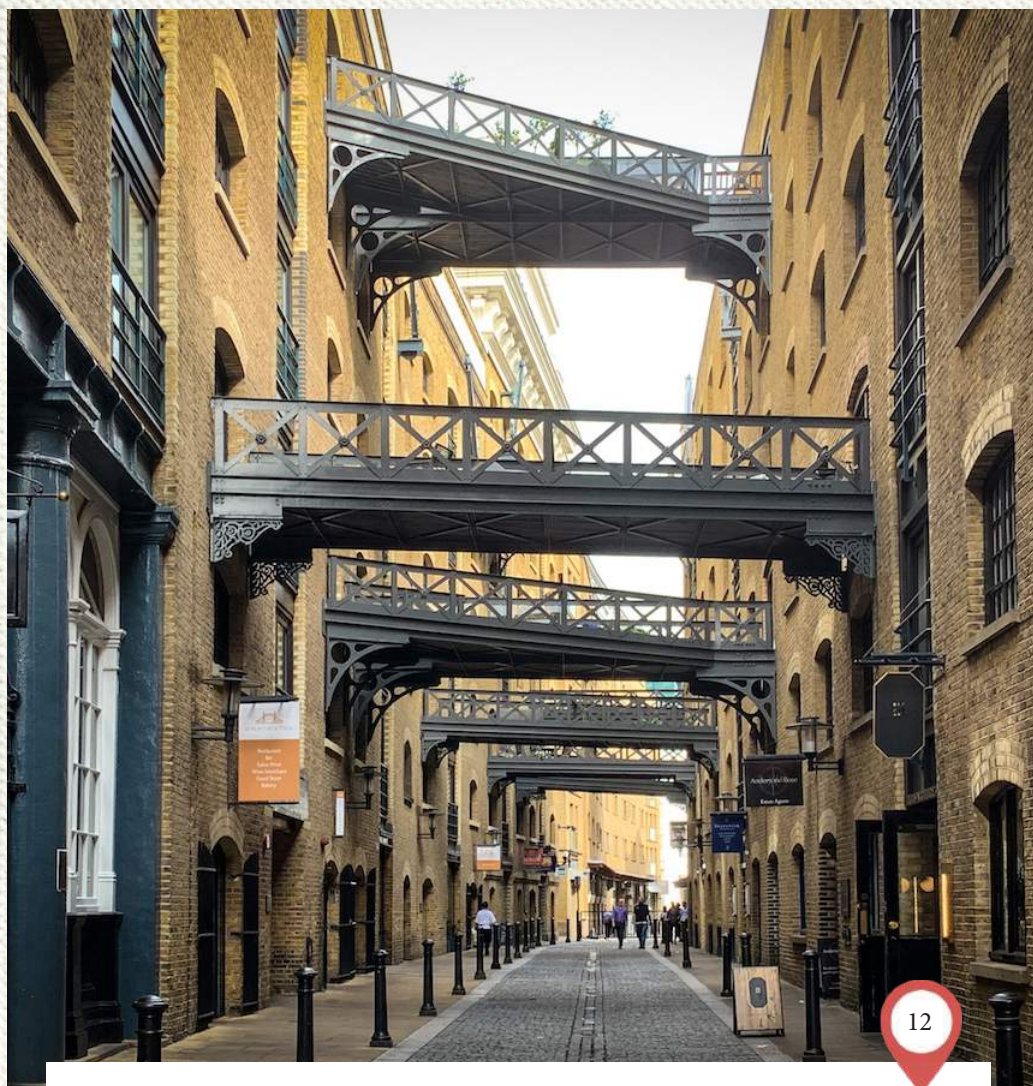


Butlers & Colonial Wharf

11 Shad Thames, SE1 2PX

Butler's Wharf, built along the River Thames in the early 1870s as a shipping wharf, was not only where goods imported via the Port of London were unloaded, it also contained one of the largest tea warehouses in the world.

A century later, when the docks shifted eastwards and the area around Butler's Wharf declined, the Conran Roche group developed the industrial complex into luxury flats, with accompanying restaurants and shops on the ground floor. There are projects currently underway to revitalise and reimagine the entire Butler's Wharf shoreline with innovative public leisure spaces.



Shad Thames

Shad Thames, SE1 2YE

Shad Thames is a historic cobbled street running through Butlers Wharf from Tower Bridge to St Saviour's Dock.

This is the largest complex of warehouses and mills on the River Thames where tea, coffee, spices and dried fruit were once stored. Many of the original 19th-century features, including the iron bridges and overhead goods gantries, still exist.



Potters Fields Park

165 Tower Bridge Road, SE1 3LW

Potters Fields Park is a unique, green open space by the Thames overlooked by the impressive and imposing Tower Bridge. With spacious lawns, lush trees, quiet walkways and colourful gardens, it offers a tranquil space by the river.

Whether you want spectacular views, somewhere to relax or picnic with friends, or a lively event, Potters Fields is the perfect spot. St. John's Churchyard, a few minutes' walk away, is a quieter community park with a children's play area, peaceful grassy spaces and newly-planted wildlife and wetlands beds.



Comptoir Bermondsey

96 Bermondsey Street, SE1 3UB

A small family-run operation, the Comptoir Gourmand Patisserie creates authentic French pastries and wholesome savoury delights daily in its Maltby Street bakery which are then distributed to Comptoir's three shops: Soho, Borough and Bermondsey.

Faced with such an appealing selection of sweet and savoury treats, visitors to the Gourmand Bermondsey might seem spoiled for choice, but the serving staff are really helpful and offer their knowledge and advice in a friendly manner. Comptoir also offers a delivery service direct to addresses across London.



15

The Giddy Grocer

80 Bermondsey St, SE1 3UD

Giddy Grocer is a distinctive grocery store on Bermondsey Street with an emphasis on sourcing primarily from artisan British producers and championing newcomers with a sustainable approach to food production.

The interior of this stylish store has a nostalgic sensibility; its shelves overspilling with vibrant and delicious produce.



The Garrison

99 Bermondsey St, Bermondsey, SE1 3XB

The Garrison in Bermondsey is renowned for its food. The menu focuses on fresh British produce, highlighting the best seasonal offering from predominantly British farms and fishermen.

The interior is flooded with natural light, while reclaimed furniture and vintage lampshades give it a laid back vibe.



Roupell Street

Lambeth, SE1 8TB

Close to Waterloo Road and Station, Roupell Street is a pocket of London where time seems to have stood still since the 19th-century. The street has featured in many movies and TV shows, from *Call The Midwife* and *Mr Selfridge* to *Legend* (starring Tom Hardy) thanks to its historical ambience.

This area was developed on marsh land on the south side of the River Thames in the mid 1820's by John Palmer Roupell, a gold refiner. The street survived the London Blitz and managed to avoid redevelopment. It is now a conservation area so its charm and historical relevance will be preserved and protected.



Hello Darling

131 Waterloo Rd, Lambeth, SE1 8UR

Adjacent to the Old Vic Theatre, Hello Darling in Waterloo is an eccentric restaurant and botanical bar serving up an eclectic mix of seasonal sharing dishes alongside their 'killer botanical cocktails'.

The colourful interior, embellished with vibrant features and accessories, was conceived and built by set designers Darling and Edge.



Monmouth Coffee

2 Park St, SE1 9AB

Monmouth Coffee shop in Borough Market often has long queues stretching around the block. The coffee is fantastic and this is the perfect place to refuel while strolling through the market.

One of London's original and now most-revered coffee specialists, Monmouth import a wide variety of single-origin coffee beans from farms, estates and cooperatives.



Bao

13 Stoney Street, SE1 9AD

Bao is inspired by the late night grill bars in Asia and is located on the edge of the food mecca that is Borough Market. These famed bun masters feature a menu with ingredients selected from the market. Bao are delicious warm, sweet, steamed bread rolls with a soft, pillowy texture and either a meat or vegetable filling.

The non-alcoholic fruit juice and iced tea options on the menu are extensive and pay homage to the restaurant's Asian influences. Alcohol is also available. Bao is minimal and casual in style and features The Bao KTV room for vivacious karaoke evenings with your friends.



22

Neal's Yard Dairy

Borough Market, , SE1 9AR

Founded in Covent Garden in 1979 by Randolph Hodgson, Neal's Yard Dairy is artisanal cheese retailer offering some of the best cheeses produced in the UK and Ireland.

The store is set within an old warehouse in Borough Market and exudes atmosphere with its high ceilings, industrial style and bustling ambience.



Park Street

Borough Market, , SE1 9AR

Park Street off Borough Market is a historic lane that has been home to playhouses, taverns and brothels over the years, giving it a reputation which led, at one time, to it being called Dirty Lane. Many of the early Victorian houses still survive today and are now home to boutiques, like Paul Smith.

They also provided the backdrop for the publicity artwork of the film *Lock, Stock and Two Smoking Barrels*.

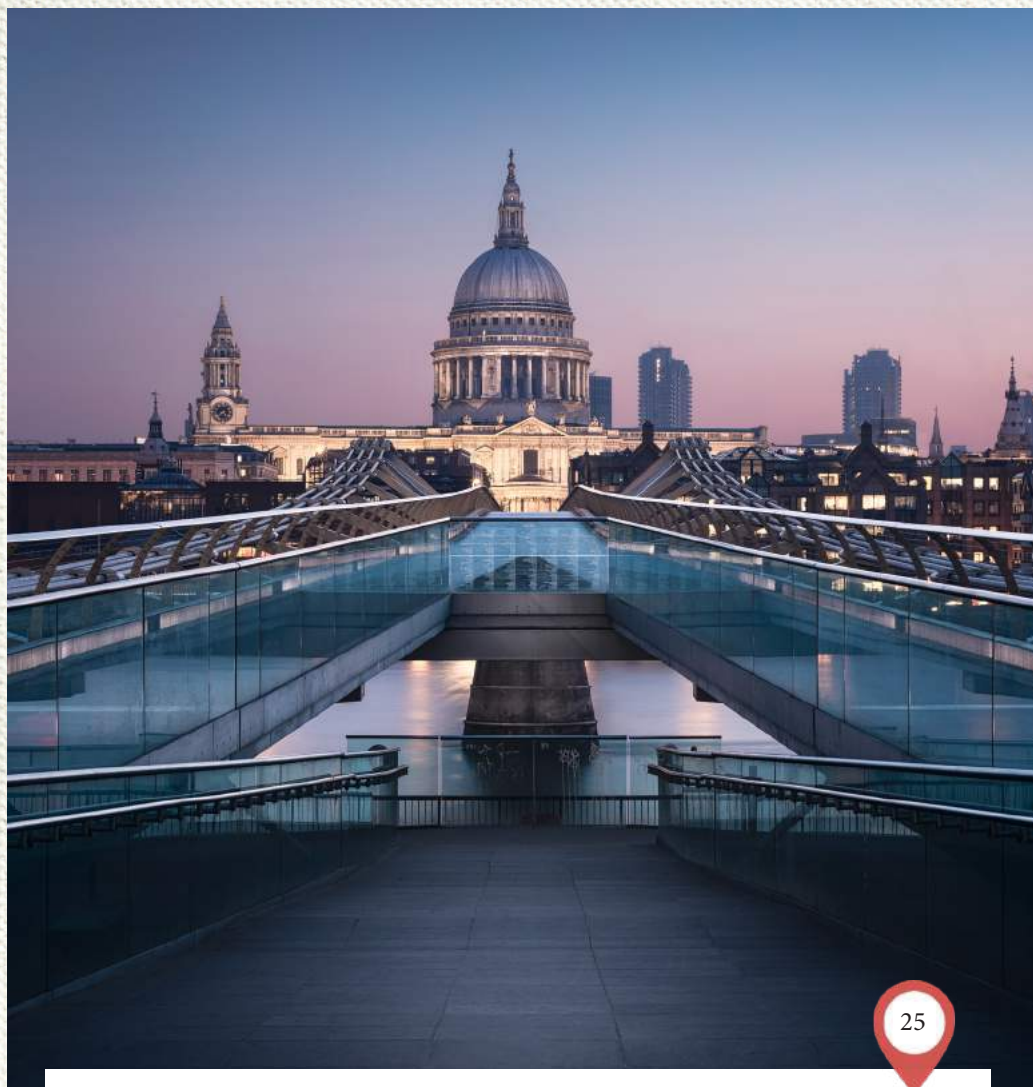


The Globe

21 New Globe Walk, SE1 9DT

Shakespeare's Globe is a world-renowned performing arts venue, cultural attraction and education centre located on the bank of the River Thames in Southwark. The theatre is a reconstruction of the original Elizabethan playhouse for which William Shakespeare wrote his plays.

The original theatre was built close to this location in 1599. Today The Globe hosts world-renowned productions.



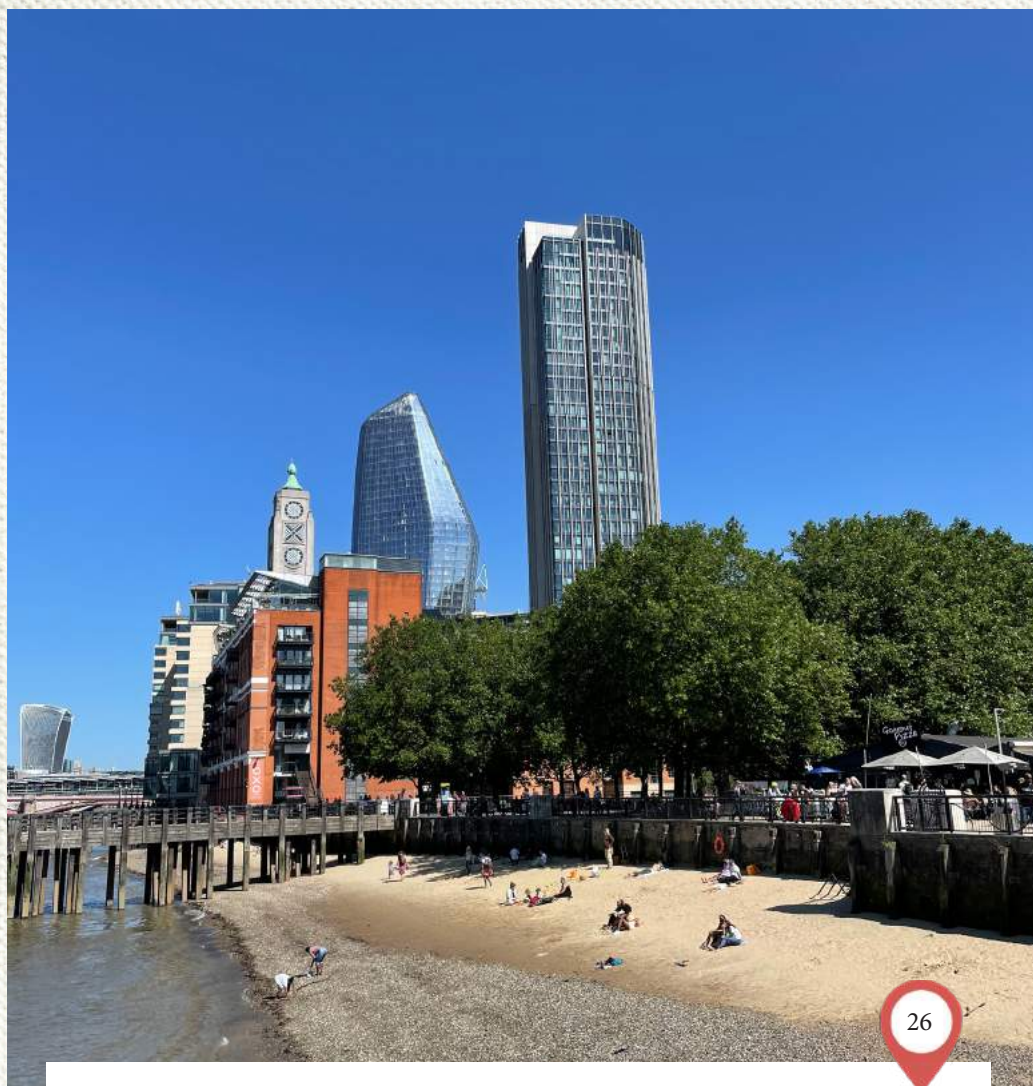
25

Millennium Bridge

Thames Embankment, SE1 9JE

The Millennium Bridge or the London Millennium Footbridge is a steel suspension bridge which crosses the River Thames in London; linking Bankside with the City of London.

Picturesque views of St.Paul's Cathedral in one direction, and The Tate Modern in the other, make this a popular crossing point.



26

Gabriel's Wharf and Beach

Thames Beach, GV5Q 8V

Gabriel's Wharf on the South Bank is an enclave of design-led shopping, cafes and restaurants which enjoys fabulous views of the River Thames. A stone's throw from the Tate Modern and Globe Theatre, it is also situated next to London's mini beach which emerges at low tide.

The golden sand can be reached by stairs down from the embankment and is a popular spot with families.



The South Bank

South Bank, SE1 9PP

For the simple pleasure of a pint with a view or a big-ticket experience, you can't go far wrong with London's South Bank as your starting point. Stroll along the walkways and rub shoulders with the River Thames. Train your eyes above the skyline and spot the pods of the London Eye gradually ambling round.

Culture buffs will be in their element, with theatre, film and art all excellently catered for.



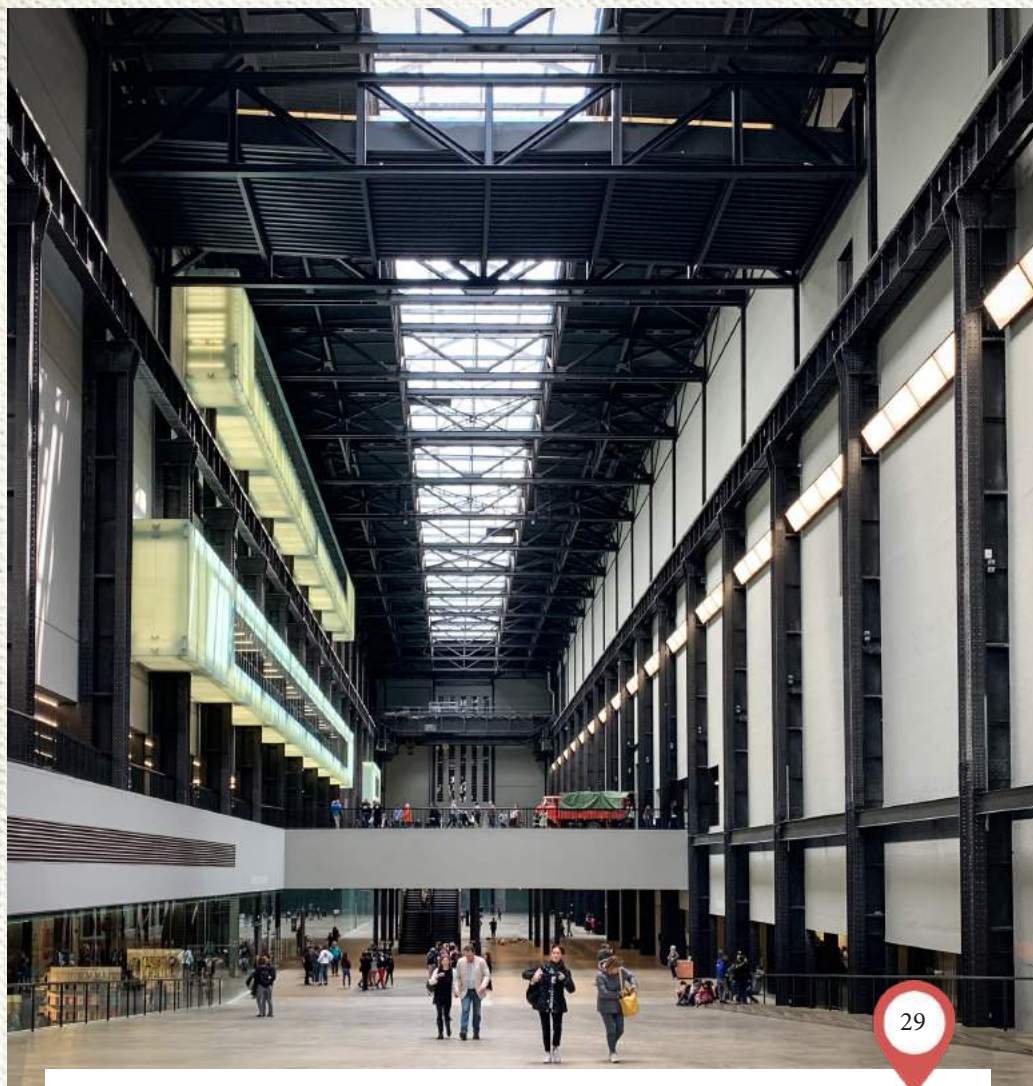
28

The Shard

32 Bridge Street, SE1 9SG

Splintering the London skyline, The Shard shoots skywards from its luxe postcode in London Bridge. But it's not just for show; inside you'll find some of the most exciting restaurants, bars and event spaces, as well as the highest viewing gallery in all of London.

Upgrade the experience with a stay at Shangri-La.



Tate Modern

Bankside, SE1 9TG

Tate Modern is a gallery that does what it says on the tin, even down to finding its home in a former riverside power station – an icon of development and hallmark of modern times. Inside its prestigious doors, you'll find an inspiring collection of contemporary artworks in unique galleries spread across multiple floors.

The likes of Picasso and Warhol make firm favourites, while events enrich the experience.



Houses of Parliament

Westminster, SW1A 0AA

Welcome to Westminster, the political heartland of the city and home to landmarks including Big Ben and the London Eye. The Houses of Parliament are a high expression of Victorian Gothic architecture, which serves to dignify the important proceedings within.

Majestic from the outside, you can also venture in with a guided tour on selected dates. Complete the day with a walk around the lake at St James's Park nearby.