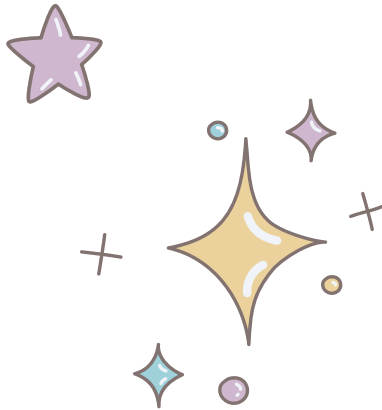





A guide to
Brush Care



We are Creative,
Colourful & Cruelty Free!

Thank you for purchasing your new set of Craftamo Brushes. Whether you're a first time Craftamo customer, or a loyal fan, we truly appreciate your custom! If there is anything we can do to help you specifically, please contact us over at our support desk by clicking [here](#). 

Here at Craftamo, we're so proud to be cruelty free! Meaning no animals are harmed (ever!) during the production of our products. All Craftamo brushes are made using synthetic brush hair, with nylon filaments, which offers many benefits over the use of animal hair.

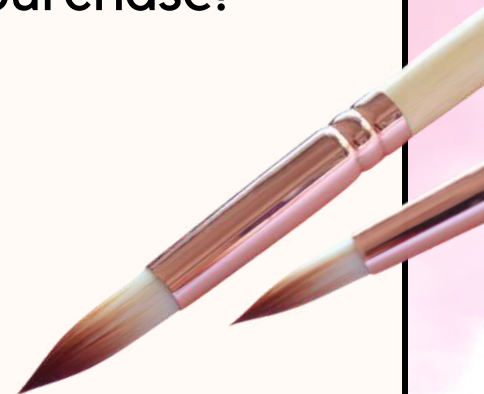
Some of the advantages of using a synthetic brush are:

1. They are much less prone to damage from the paint, or the solvents used when cleaning.
2. They are much easier to clean than animal hair.
3. They are much more durable, and longer lasting than animal hair.
4. They are better for use with acrylics because synthetic fibers can withstand the slightly caustic effect of acrylic paint with much less damage to the brush.

So there you have it, not only do synthetic brushes help us stay cruelty-free, but they offer many advantages for you as an artist! Below we've put together a comprehensive brush care guide to help you care for your Craftamo brushes to the best of your ability. We hope you enjoy your purchase!

Dan Worthington
Co-Founder

craftam♡



Before Use

During manufacturing, your brushes are treated with a water soluble glue. This means that the bristles will arrive slightly stiffened - we do this to protect the bristles from damage during the manufacturing process, and of course, during transit. So they arrive with you in pristine condition!

You should remove this before use by washing the brush with brush soap (or mild hand soap), or specially made brush care products.

Caring For Your Craftamo Brushes

With proper care and cleaning your Craftamo Brushes can last for years! You just need to keep your paint brushes happy!



While In Use

1. Never Let The Paint Dry On The Brush

Whilst painting, it's very easy to allow paint to dry on the bristles, especially when working with acrylics! We recommend to keep your brushes wet at all times, and try your best not to allow paint to dry on the brush.

The longer you let it dry, the harder the paint will become, and the harder it will be to clean the brush without ruining it. So always clean your brushes immediately!

2. Do Not Rest Your Brushes Bristles Down

Never leave your brushes in a jar with the bristles down, whether in water or not. Doing this causes the bristles to bend and fray, and it's almost impossible to correct.

While In Use

3. Do Not Get Paint On The Ferrule

The metal part that connects the handle to the bristles is called the ferrule, and you should always try to avoid getting paint on this part of the brush. If you do, it's difficult to clean and if paint seeps down into the ferrule, it can result in the bristles getting frayed.

4. Do Not Leave Them In Water Or Solvent

Don't do this! The wooden handles can swell causing the paint to split or crack, and the metal ferrules can corrode! Constant immersion in water with the bristles facing down **WILL** misshape the bristles, causing them to become frayed. If left in solvent this can easily degrade and bend the bristles. Remember that every part of your brush can get damaged if left in water, or solvent.



While In Use

5. Do Not Store Your Brushes Until Dry.

Putting them away before they are dry can harm your brushes, they can develop mildew. Allow them to fully dry by ideally hanging your brushes upside down (which helps them to retain their original shape & form) or alternatively by laying them down on a paper towel, or on a brush stand.

Cleaning Your Craftamo Brushes

The best method for cleaning brushes depends on the medium you are using, however as a general rule, you should clean your brushes thoroughly and immediately after each use. You should clean brushes right away to avoid paint drying on the bristles, and to ensure you have a clean, fresh paint brushes ready & waiting for your next painting session.

After Use

Cleaning Watercolour Brushes

Good news! Watercolour brushes are the easiest to clean.

Cold or warm water should be perfectly adequate to clean the watercolour pigments from your bristles. Just remember, don't give paint the opportunity to dry on your brushes! Always try to keep them wet by swishing them about in a jar of water, or under a gently running tap.

Touch them onto a sheet of white kitchen roll, and if absolutely no color comes out, they are clean. You can then gently flick them to restore the shape.



After Use

Cleaning Watercolour Brushes

Pigment particles can build up at the base of the brush, where the brush hairs appear from the ferrule, which can push the brush hairs apart. To avoid this, wipe your watercolour brush clean with a lint-free rag and rinse it under running water. Then, using mild soap and cool water, swirl the soapy brush in the palm of your hand and rinse.

Repeat the washing and rinsing process until the soap and water runs clear.

Leave brushes to air dry at room temperature, making sure the bristles are not in contact with any surface. You can use the handy Craftamo pop up stand to air dry them thoroughly!



After Use

Cleaning Acrylic Brushes

Looking after an acrylic brush is similar to looking after a watercolour brush. However, there are also some differences to note.

The most important thing to remember with regard to caring for your acrylic brushes is not to allow the acrylic paint to dry on the bristles, as the paint is not soluble in this state and will produce a plastic-like dried texture, so it's better to wash your acrylic brushes immediately after use. Whilst painting, keep rinsing, and leave them in water because they can dry out very quickly.

This is easier said than done, as thin layers of paint can dry near the ferrule even while you are working!



After Use

Cleaning Acrylic Brushes

After your painting session, clean your acrylic brush with mild soap and cool water, but for a more thorough clean, soak the brush in brush cleaner, which will remove any dried acrylic color.

Repeat the washing and rinsing process until the soap and water runs clear.

Leave brushes to air dry at room temperature, making sure the bristles are not in contact with any surface. You can use the handy Craftamo pop up stand to air dry them thoroughly!

After Use

Cleaning Oil Brushes

As far as oils are concerned, some form of solvent is a necessity to clean brushes properly. After working with oils, use a rag to wipe away as much color as possible from your brush. Then rinse any remaining color using White Spirit or Brush Cleaner.

Next, as you would when cleaning your hands, create a lather and rinse the brush under warm (not hot) water until the water runs clear of colour and soap.

Gently remove excess moisture.

Leave brushes to air dry at room temperature, making sure the bristles are not in contact with any surface. Again, you can use the handy Craftamo pop up stand to air dry them thoroughly.



After Use

Do I Need Special Soap To Clean My Paint Brushes?

There are special soaps that are meant for cleaning artist paint brushes. These soaps are gentle and milder on the hairs of the brush than regular hand soap, because they are specially formulated to clean and condition brushes. Usually one dish or bar of paint brush soap will last you a very long time.

We've created Craftamo's Vegan brush soap, using 100% natural ingredients to help you clean and care for your brushes!

Just remember not to use dishwashing liquid, which normally has chemicals that are too strong for the delicate hairs of an artist paint brush.

craftamo



Tips & Tricks

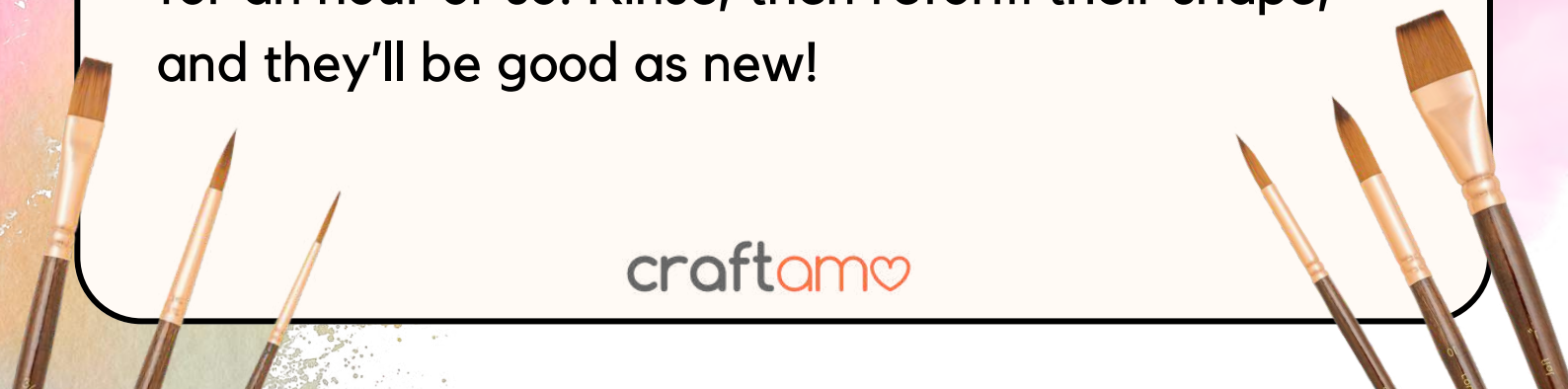
Re-shaping your Bristles

If you ever find that your Craftamo brushes have become frayed or misshapen, try out this simple yet effective trick to reform the bristles' shape back to new!

Simply dip the tip of the brush in boiling water (only the tip & avoid dipping the metal ferrule in) for 15 - 20 seconds, this will slightly soften the bristles and help pull them back into their original form.

After carrying out this process, you can gently re-shape the bristles with your finger tips, or try rolling your round brushes on a tissue, to reform them and to keep that extra sharp point!

Are your brushes heavily used? Try giving them a new lease of life by soaking them in fabric softener for an hour or so! Rinse, then reform their shape, and they'll be good as new!



Storage

Storage And Transportation

Store your clean brushes vertically - head-side-up, making sure that the brushes aren't resting against the tips of other brushes, or they can become deformed. Use the brush protectors provided when necessary.

The Craftamo pop up stand and travel case is perfect to protect your brushes from damage during transit.

Happy Painting!

Dan - Co-founder

