

VMI Hybrid: How to Unclog the Compound Tubing

Symptom: The compound pump is running, or the machine is in cycle, but no compound solution is coming out of the nozzle.

Cause: Compound solution will harden inside the nozzle if it is left exposed to air. This is usually caused when the red jet nozzle cover is not used consistently. The jet nozzle cover *must* be installed on the nozzles at any time the machine is not in use.

Tools Required:

small Philips head screwdriver

scissors

pin or paperclip

mug or cup with hot water

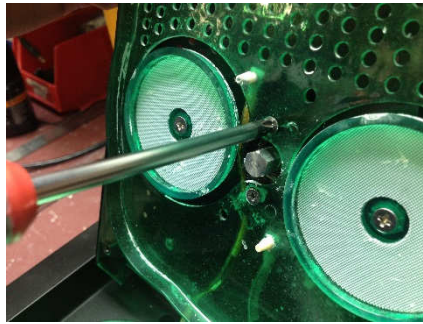
Helpful:

small pliers

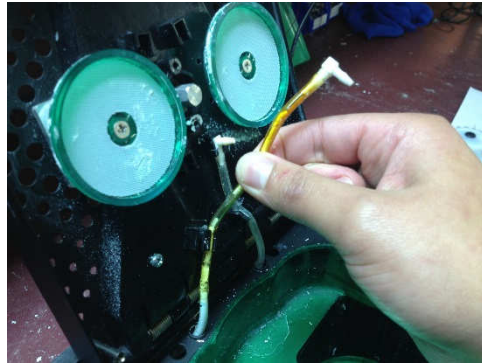
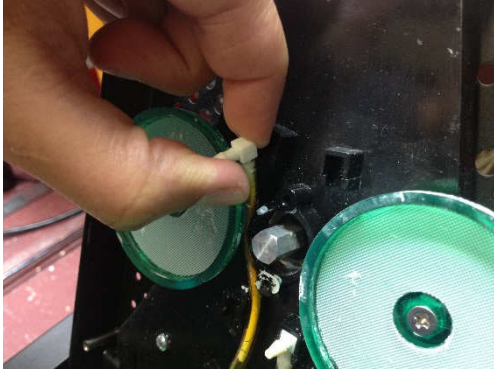
CAUTION: Do not start this process unless you have time to finish it completely. If you do not finish, you risk drying out the compound line further.

1. **Prepare the Hybrid.** Make sure that there is compound in the bottle in the back of the machine. Make sure there is no pinch in the line which feeds into the compound bottle. Power off the machine. Remove the buffing pads and center hub. Set these aside so you can re-install them later.

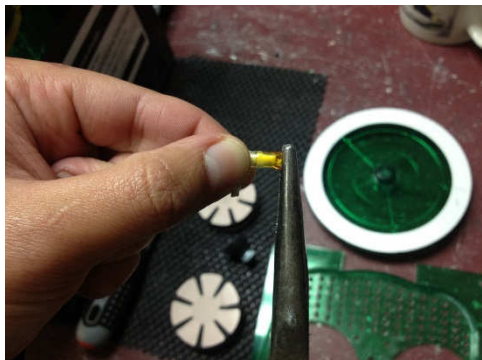
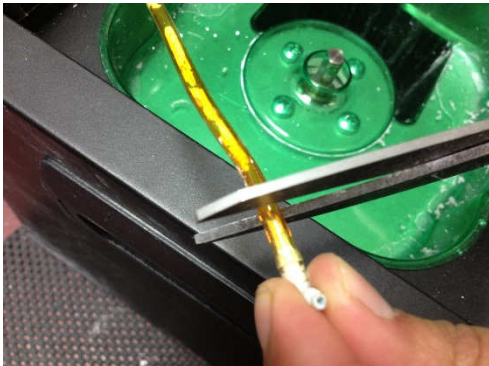
2. **Remove the lid screen.** This is the bright green piece of plastic on the inside of the lid. There are six screws to remove: one in each corner (4), and two in the center (2), between the buffing pad satellites. After the screws are removed, the lid screen can be lifted off.



3. **Unfasten the compound tubing.** The line of tubing on the left is the compound tubing. To unfasten the tubing, pull the white nozzle out of the holder. (You may use pliers if needed.) Pull the tubing out from behind the pad satellite, and pull the tubing out of the bottom bracket.



4. **Cut the nozzle from the tubing.** Position the scissors on the tubing so that you may cut right after the visible end of the nozzle. With the nozzle cut free, pry the remaining piece of tubing off the nozzle (or cut it away with scissors.)



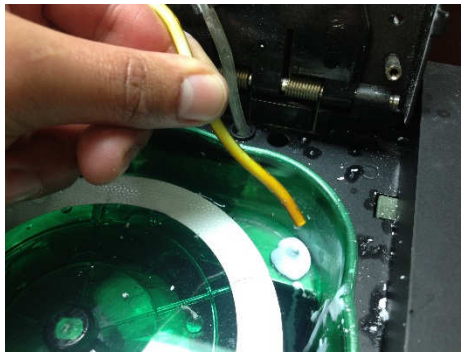
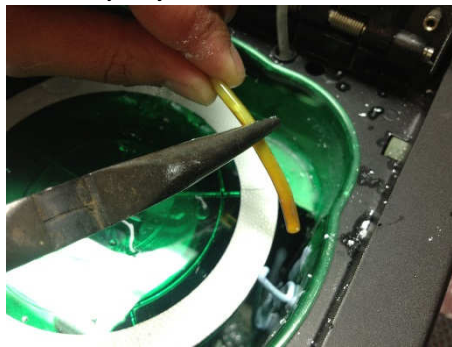
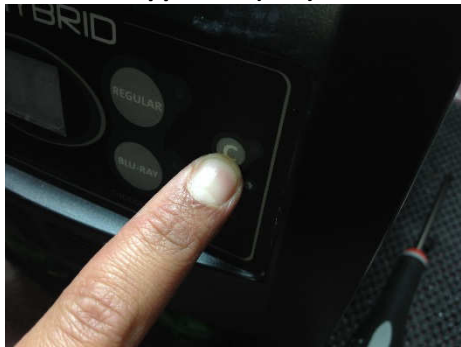
5. **Soak the nozzle in a mug of hot water.** Hot water will help to loosen dried compound debris inside the nozzle. Let the nozzle soak at least fifteen minutes. Replace the hot water if it cools down.



6. Run the compound pump. While holding the loose compound line over the catch tray, press the C button to run the compound pump. You should hear the pump engage and within a minute or so, you should see compound moving at the base of the line. If compound seems to stop moving, you may wish to help it along by squeezing the compound down and out the tubing with a pair of pliers. Once you have confirmed that compound is coming out the tube, stop the pump by pressing the C button.

Alternatively, if the compound does not come through, you may stop the pump by pressing the C button and dip the tubing in hot water. Leave the tubing to soak. This may help soften the dried compound. Then repeat the steps in the preceding paragraph.

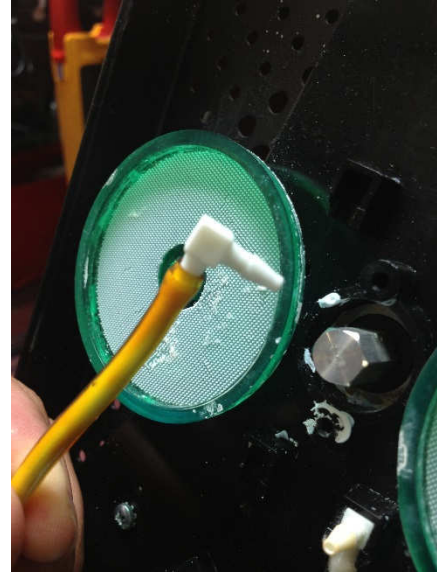
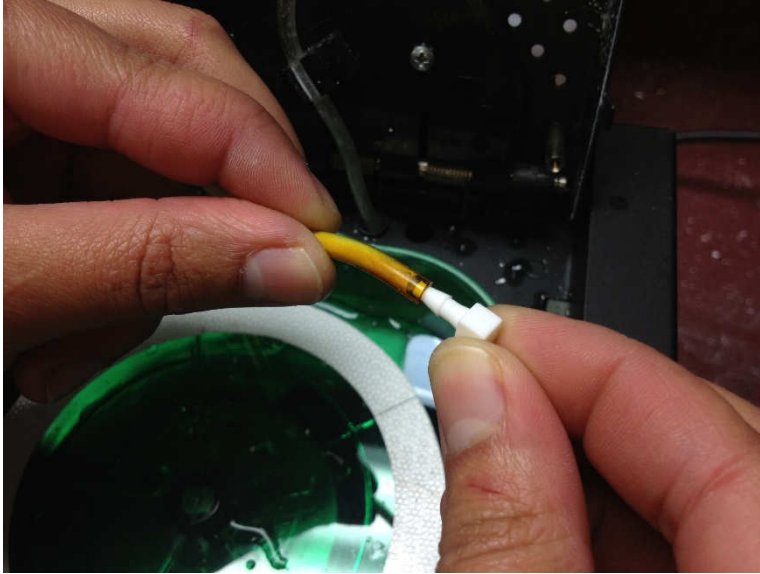
NOTE: If compound does not come out of the tubing during this step, please contact VenMill Industries technical support at (508) 363-0410 or Toll Free at (866) 864-0210.



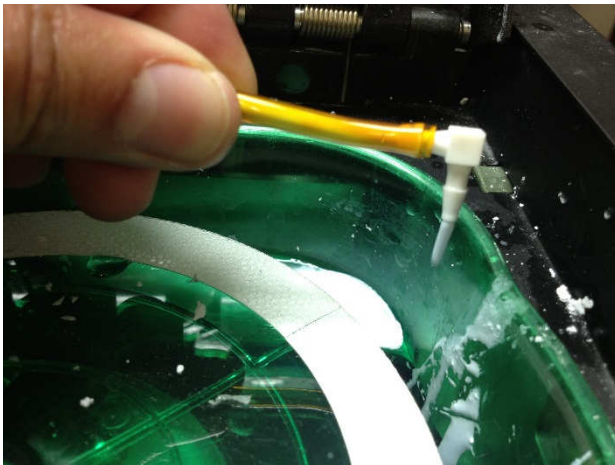
7. Clean the nozzle. Remove the nozzle from the hot water. Use a paperclip or a pin to clean out both ends of the nozzle.



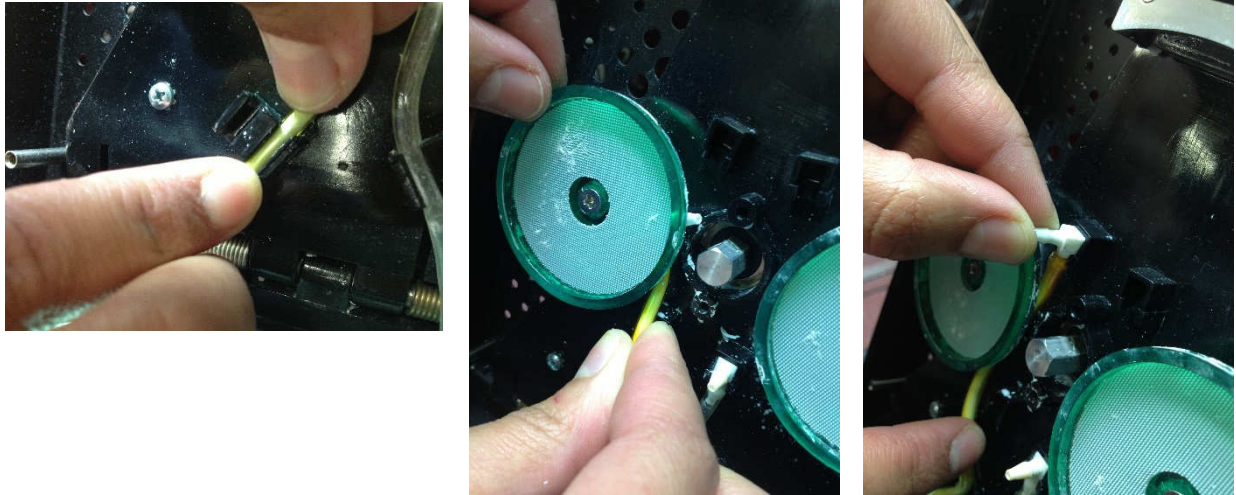
8. Reconnect the nozzle to the compound tubing securely.



9. Hold the nozzle over the catch tray, and run the compound pump by pressing the C button. Make sure that you can see compound coming through the line and out the nozzle. Make sure the tubing is not leaking around the nozzle. Stop the pump by pressing the C button again. **Note: If you are not able to see compound coming out the nozzle during this step (but you were able to see it coming through the line during step 5), you may need a replacement nozzle. Please contact VenMill Industries technical support at (508) 363-0410 or Toll Free at (866) 864-0210.**

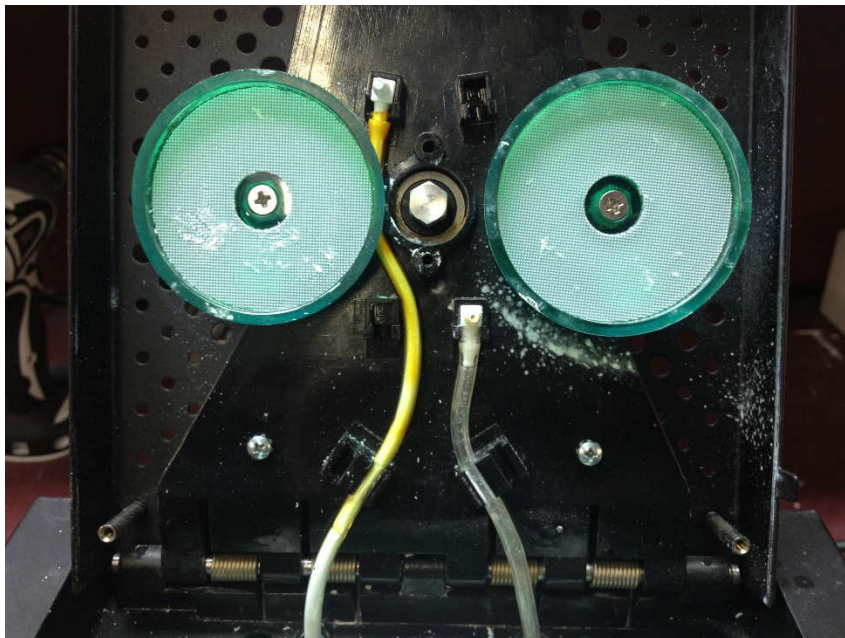


10. Fasten the tubing back to the lid.



11. **Double check the installation of the lines.** Make sure the placement of the compound line matches the photo below.

Caution: Improperly installing the compound line may cause the line to pinch and compromise disc repair quality.



12. **Re-Install the green lid screen, six screws, buffing pads, and center hub.** The Hybrid is ready for use.
