

## FX2005 Horizontal Bike Rack Assembly Instructions



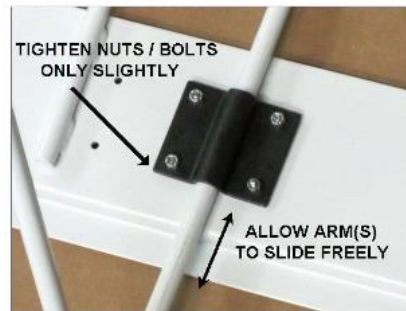
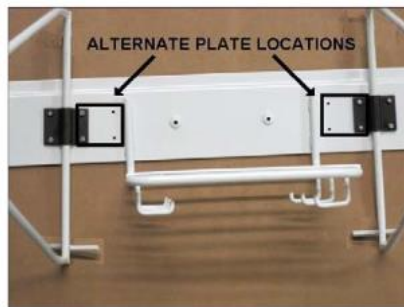
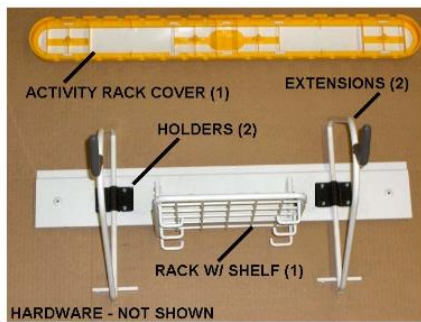
### Contents:

- 1 x Rack with Shelf
- 2 x Extensions
- 2 x Holders
- 1 x Activity Rack Cover
- 8 x Nuts
- 8 x 1/2 " Screws
- 4 x 5/8 " Screws

Tools Required: Phillips Screwdriver and Pliers

Step 1: Install extensions and holders as shown. Use the 1/2" screws and nuts to select the position of the holders based on your bike frame size.

Check the screws and nuts are tight enough by installing the rack on your FlexiPanel or FlexiTrack before you add in the Activity Rack Cover.



Step 2: You have the option to change the position of the holding arms by moving them up or down depending on how you want to store your bike.

Step 3: Remove the panel after testing and use the 4 x 5/8" screws to fasten the cover onto the rack.

Step 3: Put back onto the FlexiPanel and mount your bike.