

Double Basket Weave Quilt

Quilt Pattern Created by Leah Day ~ LeahDay.com/DoubleWeave

Do you have two fabrics that are just too pretty to cut? Pull out your rotary cutter because this pattern is the perfect way to showcase your two favorite prints woven together to create a simple, yet stunning effect!

Finished Size: 42 x 66 inches

Materials

1 yard Fabric A – Joann Fabrics Modern Cotton Watercolor Triangles

1 yard Fabric B – Keepsake Calico Purple Mosaic

1 ¾ yards Fabric C – Kona Cotton Solid Snow

1 1/4 yards 108-inch wide fabric for backing

½ yards Fabric for Binding – Kona Cotton Solid Snow

Twin sized (72 x 90-inch) batting

White 100% cotton piecing thread

Fabric Preparation and Quilt Piecing Tips

For best results, prewash, starch, and press all fabrics before cutting. Remember to lower your stitch length to 1.5 mm to create a tight, secure stitch. Unless otherwise noted, please press all seam allowances OPEN to reduce bulk and make quilting easier.

Cutting Chart

Fabric A	Cut 1 – 6 ½ x 40-inch strip Cut 15 – 6 ½ x 7 ½ inch rectangles
Fabric B	Cut 15 – 3 ½ x 12 ½ inch rectangles Cut 3 – 3 ½ x 40-inch strips
Fabric C	Cut 2 – 3 ½ x 40-inch strips Cut 6 – 2 ½ x 40-inch strips Cut 6 – 3 ½ x 40-inch strips for the border

Strip Piecing and Cutting

Strip Set 1 – Piece two Fabric C 2 ½ x 40-inch strips to either side of one Fabric B 3 ½ x 40-inch strip. Repeat two more times to create a total of three strip sets. Cut the strip sets into 30 – 3 ½ x 7 ½-inch rectangles.

Strip Set 2 – Piece two Fabric C 3 ½ x 40-inch strips to either side of one Fabric A 6 ½ x 40-inch strip. Cut into 15 – 2 ½ x 12 ½-inch rectangles.

Piecing the Blocks

Arrange the pieced units according to Fig. 1. Piece the Strip Set 2 unit to the top of one Fabric B 3 ½ x 12 ½-inch rectangle.

Next piece two Strip Set 1 units to either side of one Fabric A 6 ½ x 7 ½ inch rectangle. Piece the two units together to create a 12 ½-inch square. Repeat with all remaining units to create a total of 15 blocks.

Piece the blocks together in rows of 3 blocks, rotating alternative blocks 180 degrees to create the basket weave effect. Piece the rows together, carefully matching seams.

Piecing the Border

Piece one Fabric C 3 ½ x 40-inch strip to the top and bottom edges of the quilt. Trim the corners square. Next piece the remaining four Fabric C 3 ½ x 40-inch strips together with a diagonal seam. Cut two 3 ½ x 68-inch strips from this long strip and piece to both sides. Trim the corners square and give the quilt a final press and it will be ready for quilting.

Find a video tutorial for piecing this beautiful quilt at LeahDay.com/DoubleWeave

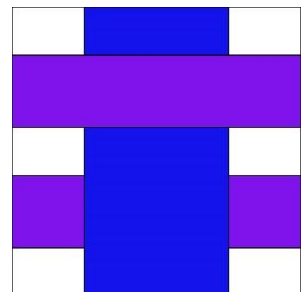
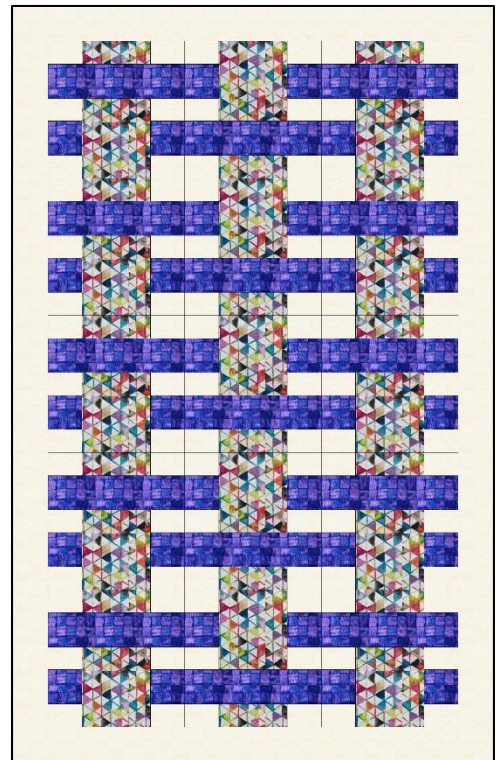


Fig. 1