

AUTO PARTS CATALOGUE FOR SUZHOU EAGLE ELECTRIC VEHICLE

苏州益高电动汽车

EG6020A4D 备件手册



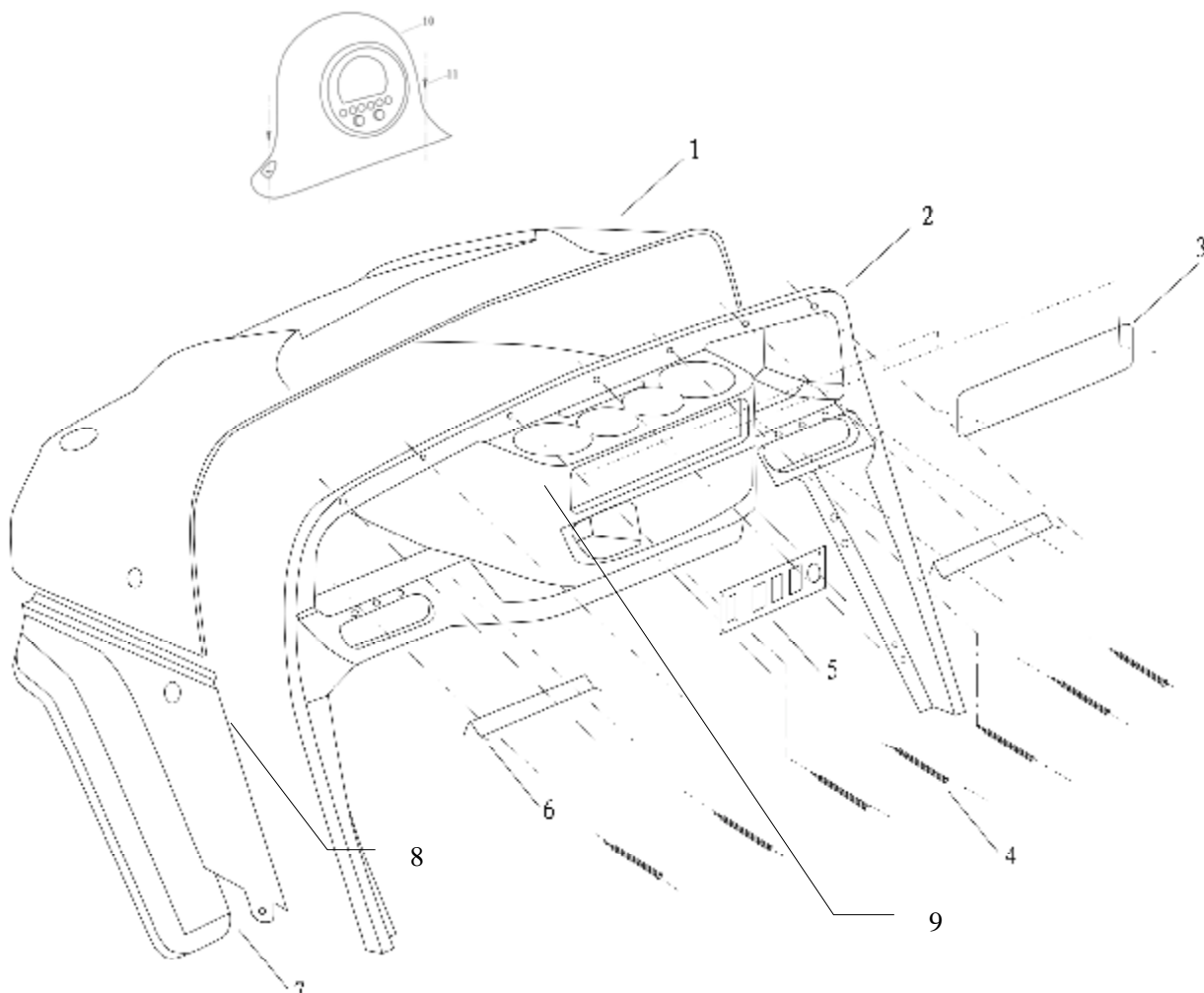
苏州益高电动车辆制造有限公司

SUZHOU EAGLE ELECTRIC VEHICLE MANUFACTURING CO.,LTD

Index

1-1 Front Cover, Instrument Board (前罩、仪表台)	3
1-2 Front Windshield (折叠前风挡)	4
1-3 Roof and roof tube (顶棚、顶棚骨架)	5
1-4 Rear standing board, handrail, flip flop seats assembly (后站板、后站板扶手、折叠座椅总成)	6
1-5 Side rear view mirror (侧后视镜)	8
1-6 Front fender and rear fender (前、后轮眉)	9
1-7 Backrest (靠背)	10
1-8 Front Seat and Armrest (前排座椅和扶手)	11
1-9 Front Bumper (前保险杠)	12
1-10 Rear Body and rear bumper (后罩及后保险杠)	13
2-1 Chassis, floor mat, rocker panel (车架总成、地板革、侧护板)	14
2-2 Front basket (option) (前篮 (选装))	16
2-3 Winch (电动绞盘)	18
3-1 Brake Assembly Rear (后轮制动器)	19
4-1 Front Axle, Rear Axle Assembly (前桥、后桥总成)	21
5-1 Retarder Assembly (主减速器总成)	23
5-2 Differential (12.49 速比差速器)	25
5-3 Master Cylinder, Brake Pipe (制动总泵、制动管路)	27
5-4 Parking Brake Handle (驻车制动操纵)	28
6-1 Front, Rear Shock Absorber (前、后减震器)	30
7-1 Steering Wheel Assembly (方向盘总成)	31
7-2 Steering Shaft Assembly (转向轴总成)	32
7-3 Steering Gear Assembly (转向器总成)	34
8-1 Wheel (车轮)	36
9-1 Motor (电机)	37
9-2 Electronic Controller Assembly (1244 型号 电控总成)	39
9-3 Harness (1244 型号 48V 控制线束)	41
9-4 Batteries & Connect Wire (电池及连线)	43
10-1 Instrument Panel, Start Key (仪表面板、启动开关)	46
10-2 Combination switch, Loud speaker, Backup buzzer, Electronic flasher, Auxiliary relay (组合开关、喇叭、倒车蜂鸣器、电子闪光器、辅助继电器)	47
10-3 Lights (灯 具)	49
10-4 48V/12V DC converter (48V/12V DC 转换器)	51
10-5 Charger (充电机)	53

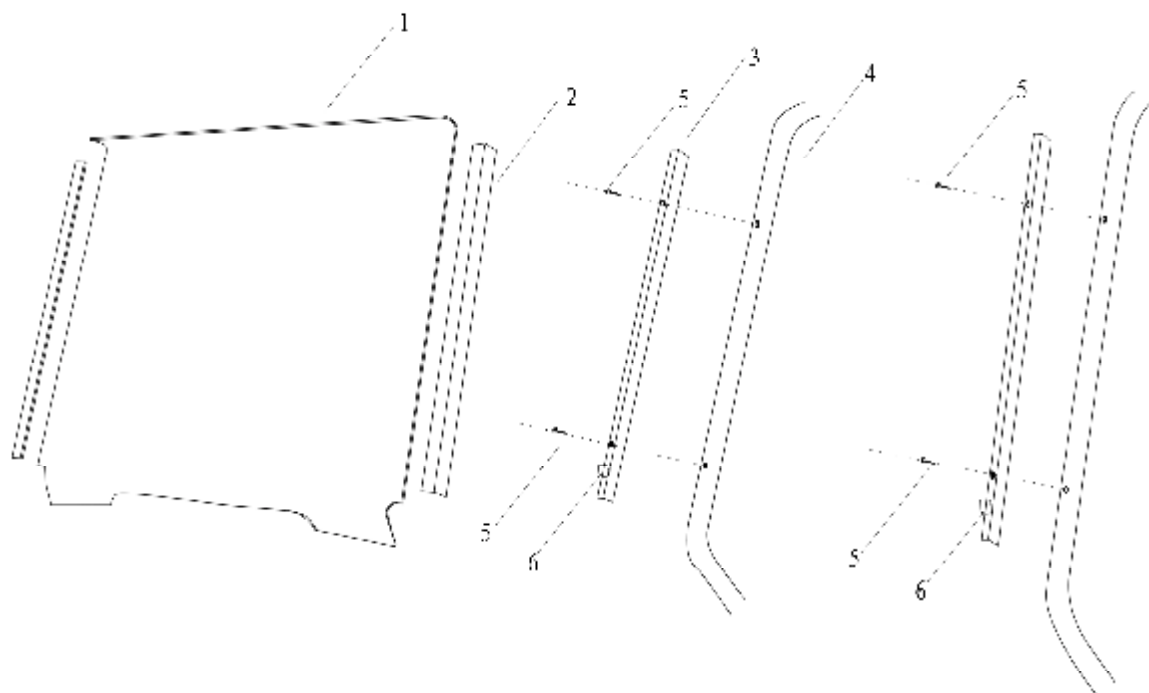
1-1 Front Cover, Instrument Board (前罩、仪表台)



1-1 Front Cover, Instrument Board (前罩、仪表台)

Item No	Part No	Description	中文名称	Qty	Remark
1	3040-5202001-112	Front cover(new camo)	前罩(树林迷彩)	1	
2	2028-5205005-102	Instrument board(plastic)	仪表台(黑色塑料)	1	
	2028-5205005-101	Instrument board(timber)	仪表台(桃木)	1	
3	2028-5205004	Safety label	安全警告牌	1	
4	Q4400418	Hatch type flat round head rivet M4×18.08	黑锌开口型扁圆头抽芯铆钉	15	
5	6020A4D-3004001	Panel	仪表面板	1	
6	2024-9015001	Glove box mat	手套盒挡块	2	Eudipleural
7	2020A-5402001	Front fender	前轮眉	2	Eudipleural
8	2024-9006002	Floor mat bar	地板革压条	2	
9	2028-5205002-101	Cup holder(timber)	杯托(桃木)	1	
	2028-5205002-102	Cup holder(plastic)	杯托(黑色塑料)	1	
10	AED-GL-00	Digital meter	仪表	1	option
11	Q2710620	Self-tapping screw M6X20	十字槽盘头自攻螺钉 M6×20	2	

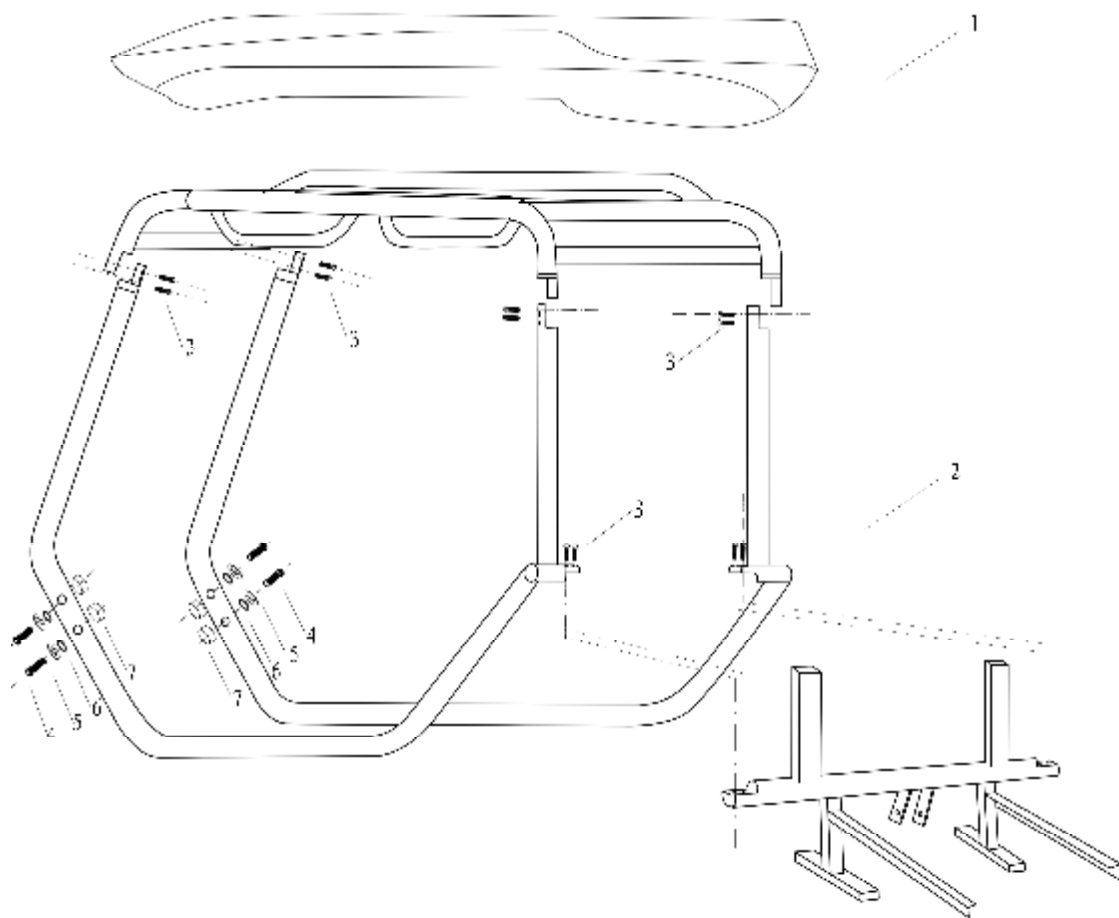
1-2 Front Windshield (折叠前风挡)



1-2 Front Windshield (折叠前风挡)

Item No	Part No	Description	中文名称	Qty	Remark
1	2020A-5203001	Windshield, one piece	非折叠前挡玻璃	1	
	2020A-5203001A	Windshield, hinged	折叠前挡玻璃	1	
2	2024-5606003	sash for hinged windshield	玻璃夹	2	
3	2020A-5203006	Bracket for windshield	前挡玻璃支架	2	
4	2020A-5601000	Roof frame assembly	顶棚骨架	1	40*2.0
5	Q2710625	Cross groove tray head self-tape bolt M6×25	黑锌十字槽盘头自攻螺钉	4	
6	2024-5606002	Glass holding block	玻璃托块	2	

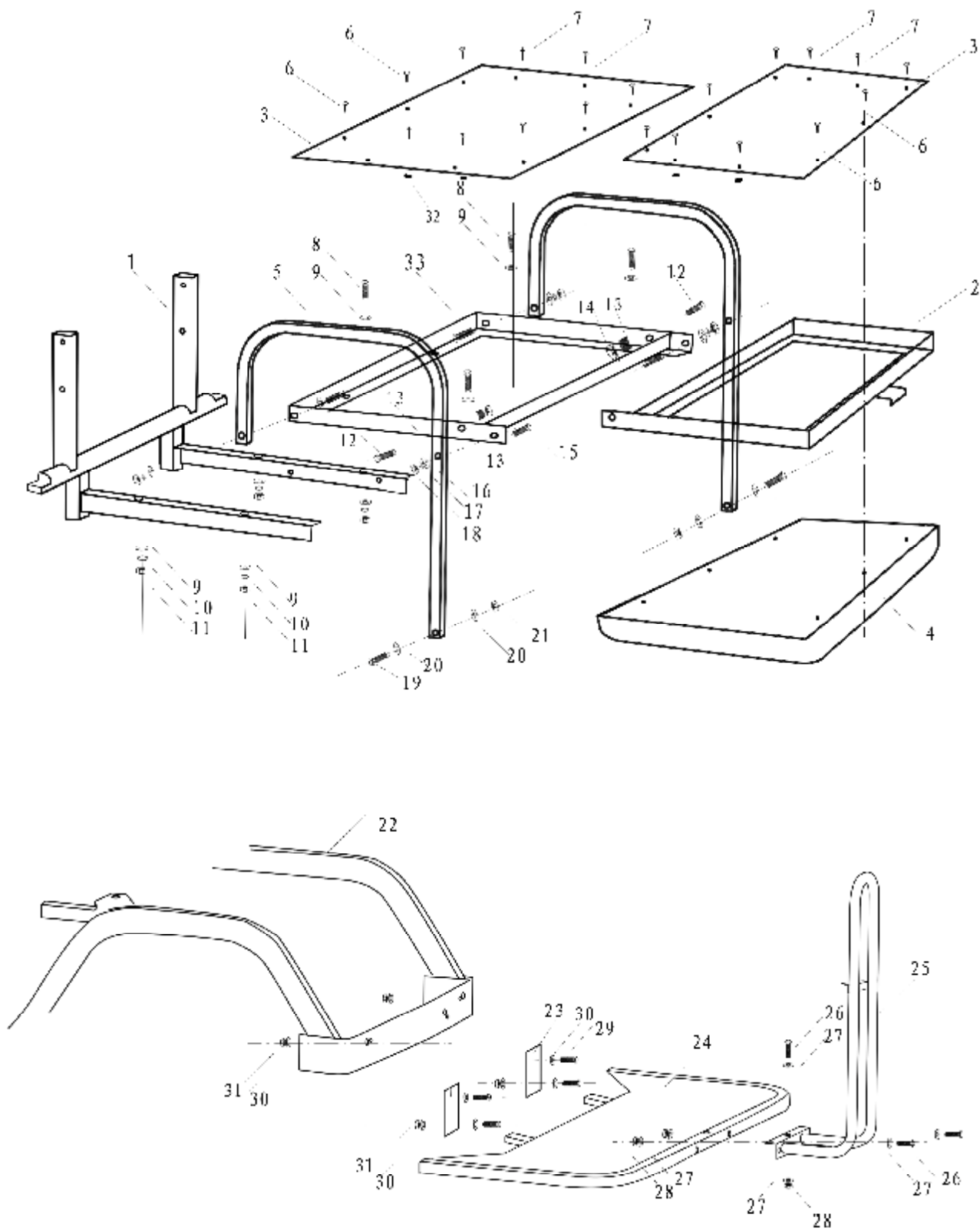
1-3 Roof and roof tube (顶棚、顶棚骨架)



1-3 Roof and roof tube (顶棚、顶棚骨架)

Item No	Part No	Description	中文名称	Qty	Remark
1	2020A-5602001	Fibreglass Roof (Canvas)	帆布顶棚	1	
	2020A-5602001-001	Fibreglass Roof (FRP)	玻璃钢顶棚	1	No paint
2	2020A-5601000	Roof frame assembly	顶棚骨架总成	1	40*2.0
3	Q218B0820	Allen screw M8*20	内六角圆柱头螺钉 M8×20	12	
4	Q150B0890	Hexagon bolt M8*60	六角头螺栓 M8×90	4	
5	Q40208	Larger spacer	大垫圈 M8	4	
6	Q40308	Spring washer M8	弹簧垫圈 M8	4	
7		Washer	垫块	4	

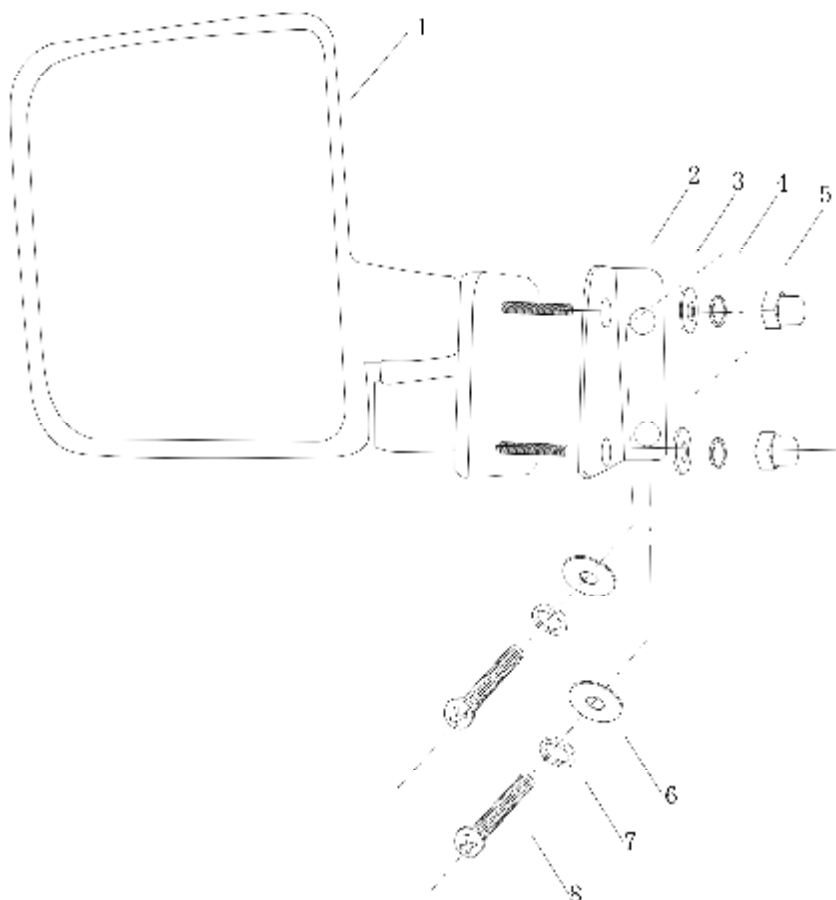
1-4 Rear standing board, handrail, flip flop seats assembly (后站板、后站板扶手、折叠座椅总成)



1-4 Rear standing board, handrail, flip flop seats assembly (后站板、后站板扶手、折叠座椅总成)

Item No	Part No	Description	中文名称	Qty	Remark
1	2020A-7102013	Seat bottom bracket	座椅底支架	1	
2	2026KSZ-7102040-001	Flip flop bracket	翻转架(翻转坐垫支架)	1	
3	2026KSZ-7102041-101	Aluminum board	翻转支架铝板	1	
4	2024-6505010	flip seat cushion	折叠式座垫	1	
	2024-6505010-001	flip seat cushion (new camo)	折叠式座垫(新迷彩)	1	
5	2026KSZ-7102011-002	Side arm rest	侧扶手	2	
6	Q2710625	Black nickel bolt M6×25	十字槽盘头自攻螺钉 M6×25	12	
7	Q2140625	Crossed pan head bolt M6×25	十字槽盘头螺钉 M6×25	8	
8	Q150B0845	Black nickel bolt M8×45	六角头螺栓 M8×45	4	
9	Q40108	gasket M8	平垫 M8	8	
10	Q40308	spring M8	弹垫 M8	4	
11	Q394B08	operculiform nut M8	盖形螺母 M8	4	
12	Q150B1030	Black nickel bolt M10×30	六角头螺栓 M10×30	2	
13	2042-7102048	copper sheathing	铜套	2	
14	Q32610	Lock nut M10	2型非金属嵌件六角锁紧螺母 M10	2	
15	Q150B0840	bolt M8×40	六角头螺栓 M8×40	4	
16	Q40108	Flat washer M8	平垫圈 M8	8	
17	Q40308	Spring washer M8	弹簧垫圈 M8	4	
18	Q394B08	Black nickel operculiform nut M8	黑镍盖形螺母 M8	4	
19	Q150B0865	bolt M8×65	六角头螺栓 M8×65	2	
20	Q40108	gasket M8	平垫圈 M8	4	
21	Q32608	Hex lock nut M8	2型非金属嵌件六角锁紧螺母 M8	2	
22	2020A-5101000	Steel vehicle frame assy.	车架总成	1	
23	2024-2508005	Shackle for rear standing board	吊耳片(--后站板)	2	
24	2042-7101010	Rear standing board	后站板	1	
25	2026KSZ-7101020-002	Rail of rear standing board	后站板扶手	2	
26	Q150B0840	bolt M8×40	六角头螺栓 M8×40	3	
27	Q40108	gasket M8	平垫 M8	6	
28	Q33208	Hex lock nut M8	2型全金属六角锁紧螺母 M8	3	
29	Q150B0840	bolt M8×40	六角头螺栓 M8×40	4	
30	Q40108	gasket M8	平垫 M8	8	
31	Q33208	Hex lock nut M8	2型全金属六角锁紧螺母 M8	4	
32	Q33206	Hex lock nut M6	2型全金属六角锁紧螺母 M6	8	
33	2026KSZ-7102045-004	flip flop bracket	翻转支架	1	

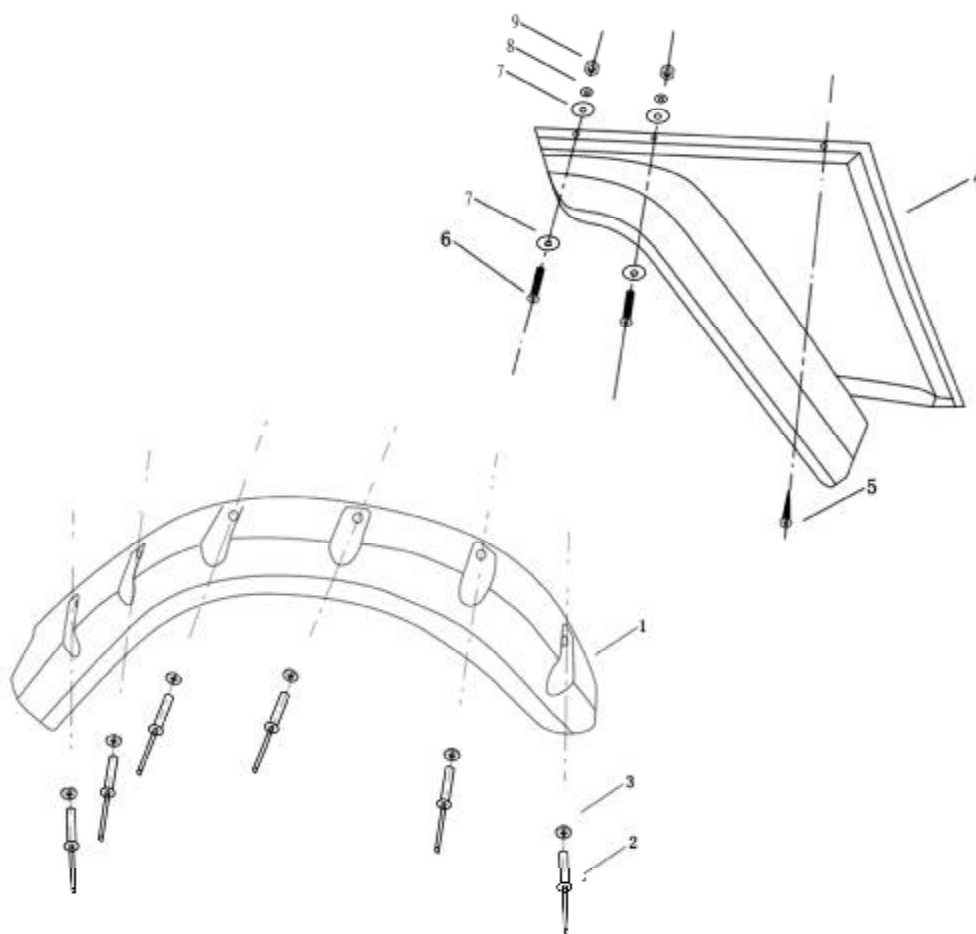
1-5 Side rear view mirror (侧后视镜)



1-5 Side rear view mirror (侧后视镜)

Item No	Part No	Description	中文名称	Qty	Remark
1	6083-9002010	Rear view mirror	后视镜	1	Eudipleural
2	2025-9002011	Mounting bracket for rear view mirror	后视镜支架	1	Eudipleural
3	Q40106-304H	Black nickel gasket M6	黑镍平垫圈 M6	2	
4	Q40306-304H	Black nickel gasket spring M6	黑镍弹簧垫圈 M6	2	
5	Q394B06-304H	Black nickel operculiform nut M6	黑镍盖形螺母 M8	2	
6	Q40106-304H	Black nickel gasket M6	黑镍平垫圈 M6	2	
7	Q40306-304H	Black nickel gasket spring M6	黑镍弹簧垫圈 M6	2	
8	Q2710620	Crossed self tapping bolt M6X20	黑镍十字槽盘头自攻螺钉—C型 M6×20	2	

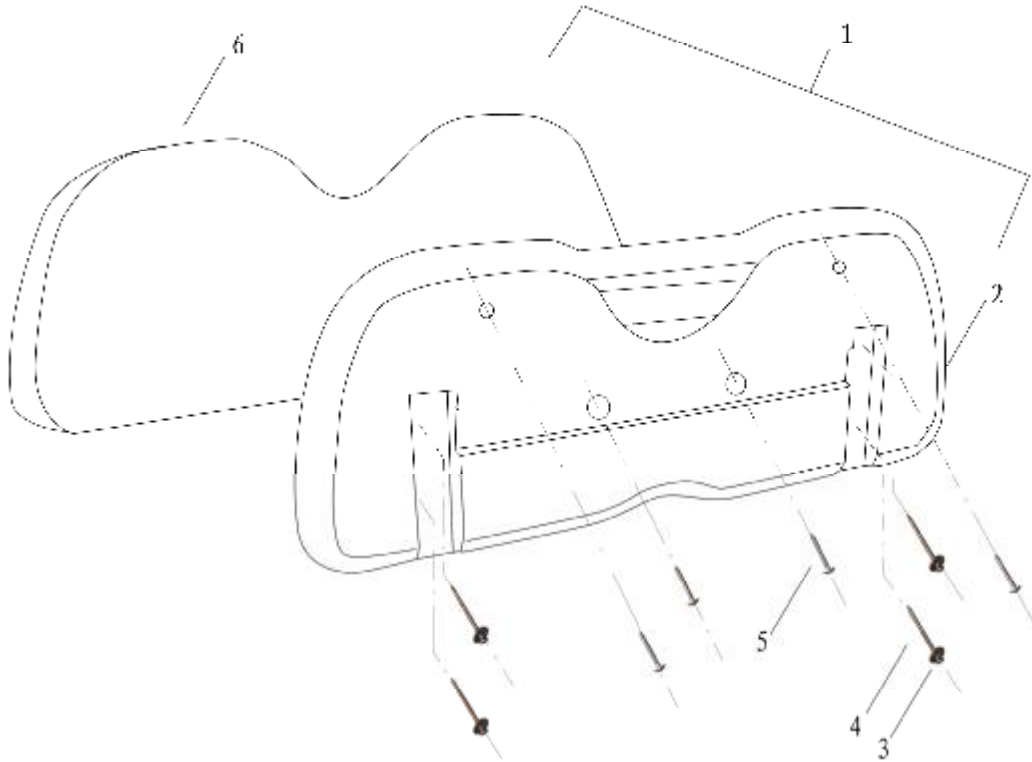
1-6 Front fender and rear fender (前、后轮眉)



1-6 Front fender and rear fender (前、后轮眉)

Item No	Part No	Description	中文名称	Qty	Remark
1	2020A-5502001	Rear fender	后轮眉	2	Eudipleural
2	Q4400518-304H	Rivet M5	黑锌开口型扁圆头抽芯铆钉 M5×18.08	12	
3	Q40105	flat washer	平垫圈	12	
4	2020A-5402001	Front fender	前轮眉	2	Eudipleural
5	Q2730415-304H	Black nickel cross self tapping bolt M4*15	黑镍十字槽大半圆头自攻螺钉 M4×15	2	
6	Q2140425-304H	Black nickel pan head bolt M4*25	黑镍十字槽盘头螺钉 M4×25	4	
7	Q40104	Flat washer M4	平垫圈 M4	4	
8	Q40304	Spring washer M4	弹簧垫圈 M4	4	
9	Q340B04	Hexagon nut M4	1 型六角螺母 M4	4	

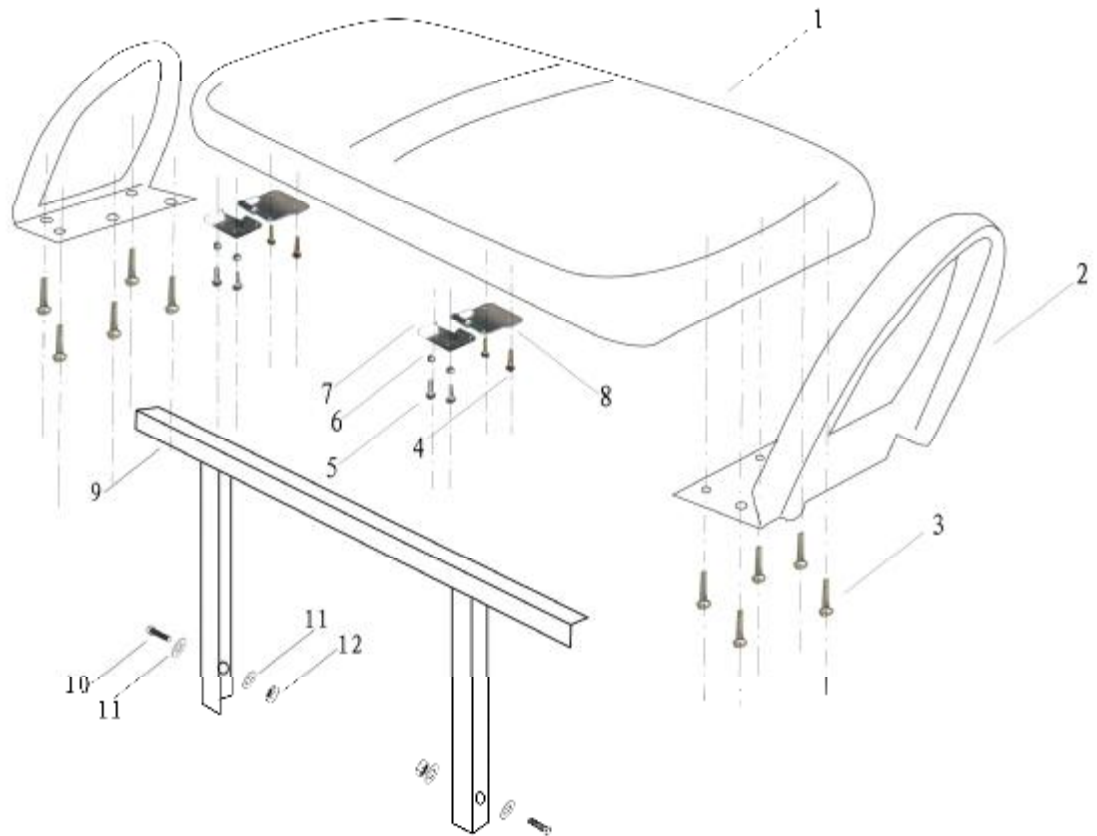
1-7 Backrest (靠背)



1-7 Backrest (靠背)

Item No	Part No	Description	中文名称	Qty	Remark
1	2028-6501020	Assembly of backrest(include 2-6)	靠背总成(include 2-6)	1	
2	2028-6501023-101	cover for backrest(timber)	靠背罩(桃木)	2	
	2028-6501023-102	cover for backrest(plastic)	靠背罩(黑色塑料)	2	
3	Q40206-304H	Larger black nickel flat washer	黑镍加大平垫	4	
4	Q2620660	Cross lock bolt M6*60	十字槽盘头自攻锁紧螺钉 M6*60	4	
5	Q2620425	M4*25 zinc-coating bolt	蓝锌十字槽盘头自攻锁紧 螺钉	4	
6	2028-6501022	Backrest cushion	靠背垫	2	

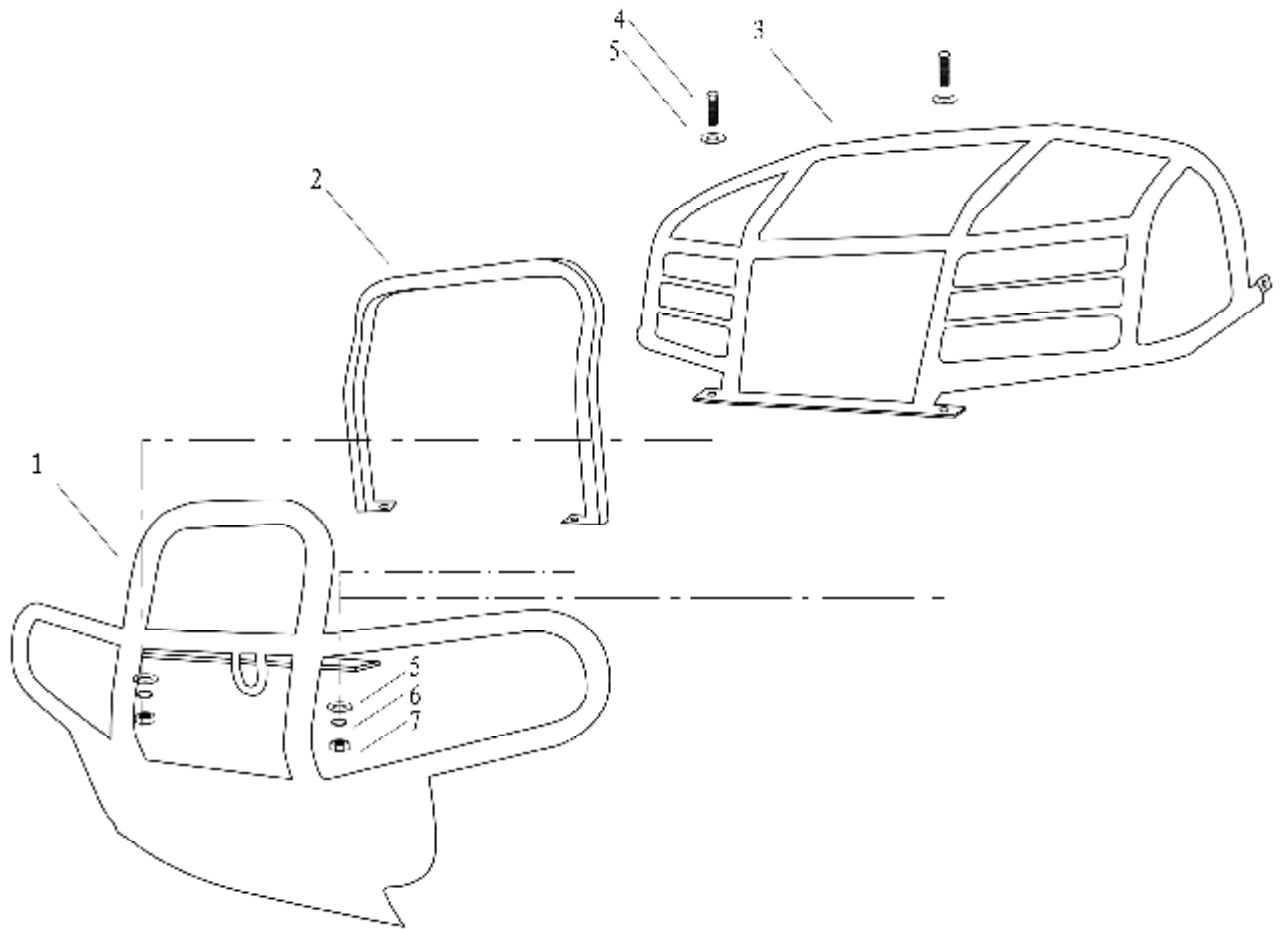
1-8 Front Seat and Armrest (前排座椅和扶手)



1-8 Front Seat and Armrest (前排座椅和扶手)

Item No	Part No	Description	中文名称	Qty	Remark
1	2028-6501010	Seat Cushion	座垫总成	1	
2	2028-6501015	Arm rest	座椅扶手	2	
3	Q2720630	Zinc coating self tapping screw	彩锌十字槽盘头自攻螺钉 M6×30	10	
4	Q2720625	Zinc coating self tapping screw	彩锌十字槽盘头自攻螺钉 M6×25	4	
5	Q2620625	Stainless steel self tapping screw	不锈钢十字槽盘头自攻螺钉 M6×25	4	
6	Q32606	Hexagon lock nut M6	2 型非金属嵌件六角锁紧螺母 M6	4	
7	2026-6501017	Underside piece of gemel	座椅铰链下板	2	
8	2026-6501018	Upside piece of gemel	座椅铰链上板	2	
9	2024-5101057	seat bracket	座椅支架	1	Q235
10	Q150B0820	hexagon bolt	六角头螺栓	2	
11	Q40208	larger washer	大垫圈	4	
12	Q33208	hexagon lock nut	2 型全金属六角锁紧螺母	2	
13	2028-6501014	Seat cover	座椅底板	1	

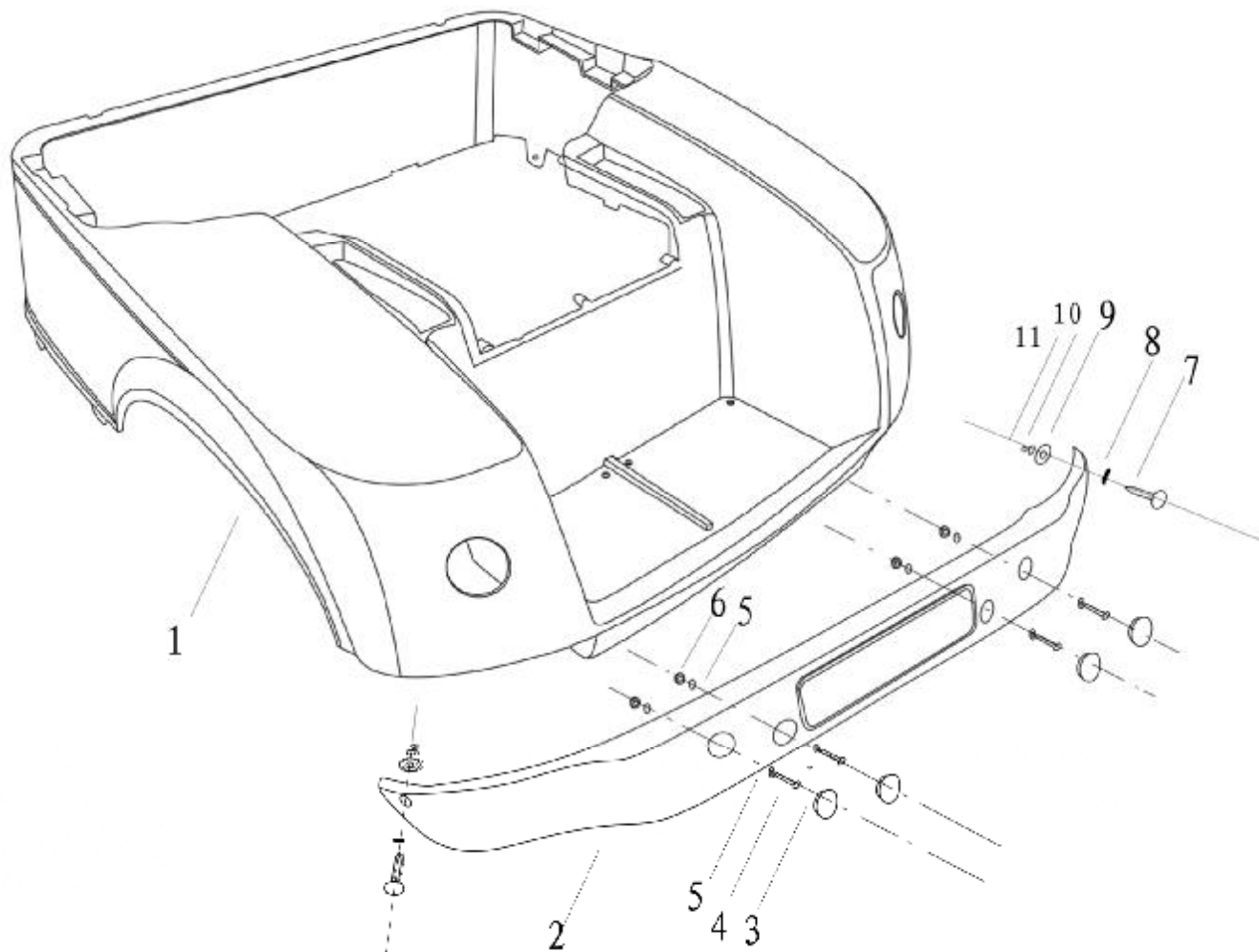
1-9 Front Bumper (前保险杠)



1-9 Front Bumper (前保险杠)

Item No	Part No	Description	中文名称	Qty	Remark
1	2020A-5207010	Front bumper	前保险杠总成	1	32*2.0
2	6020A4D-5601005	Front basket 1	前篮支架 1	1	
3	2020A-5207011	Front body protection frame	前罩保护架总成	1	20*2.0
4	Q150B0830	Hexagon bolt M8*30	六角头螺栓 M8×30	2	
5	Q40108	Flat washer M8	平垫圈 M8	4	
6	Q40308	Spring washer M8	弹簧垫圈 M8	2	
7	Q360B08	Hexagon M8	2 型六角螺母 M8	2	

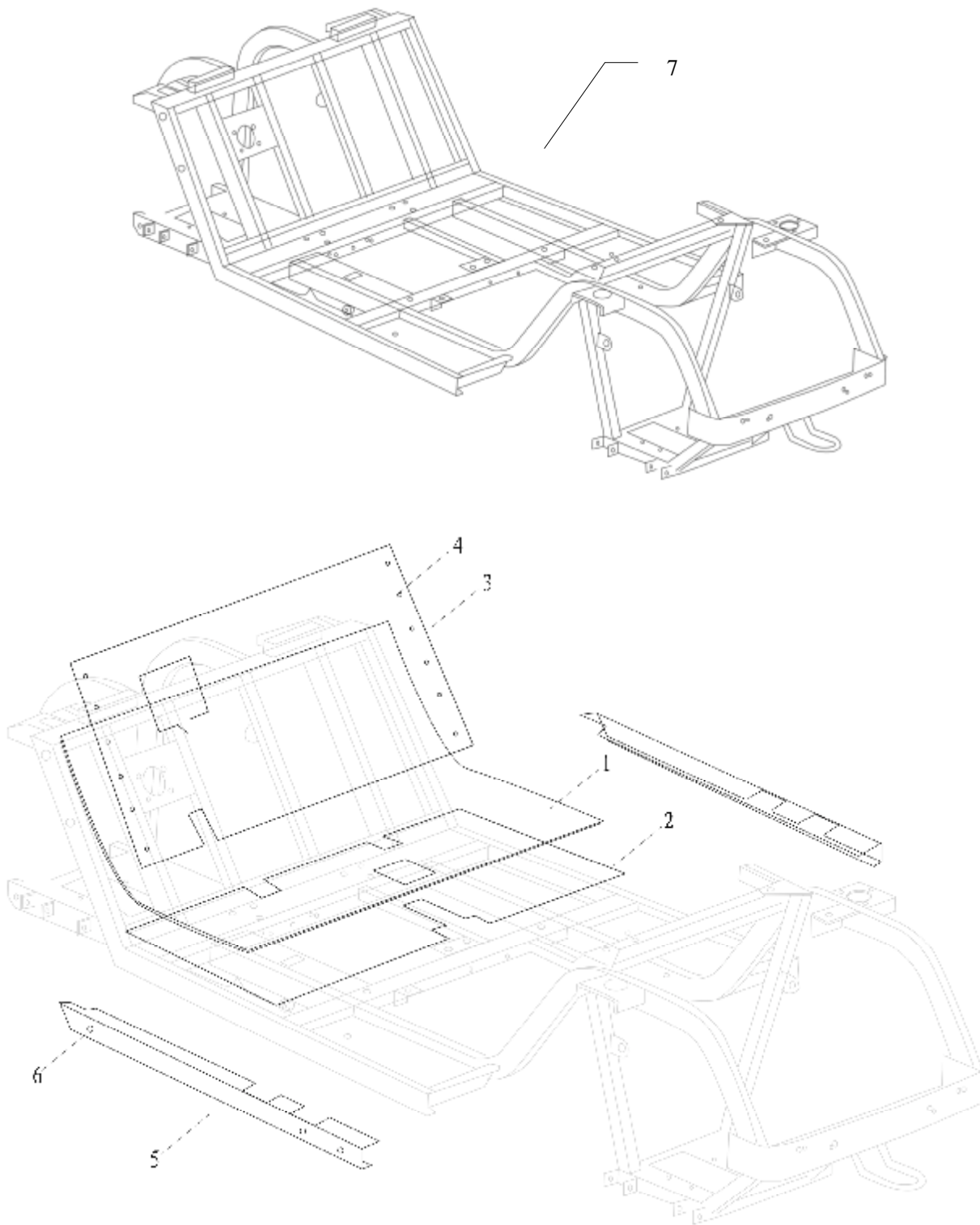
1-10 Rear Body and rear bumper (后罩及后保险杠)



1-10 Rear Body and rear bumper (后罩及后保险杠)

Item No	Part No	Description	中文名称	Qty	Remark
1	2024-5502001	Rear body	后罩	1	
2	2024-5506011	Rear bumper	后保险杠	1	
3	2024-5506007	Rubber plug for rear bumper	后保险杠胶塞	4	
4	Q150B0630	Hexagon bolt M6*30	六角头螺栓 M6×30	4	
5	Q40206	Larger spacer M6	大垫圈 M6	8	
6	Q340B06	Hexagon nut M6	1 型六角螺母 M6	4	
7	Q2140620	Cross groove bolt M6x20	十字槽盘头螺钉 M6×20	2	
8	Q40006	Small spacer M6	小垫圈 M6	2	
9	Q40206	Larger spacer M6	大垫圈 M6	2	
10	Q40306	Spring washer	弹簧垫圈	2	
11	Q340B	Hexagon nut	1 型六角螺母	2	

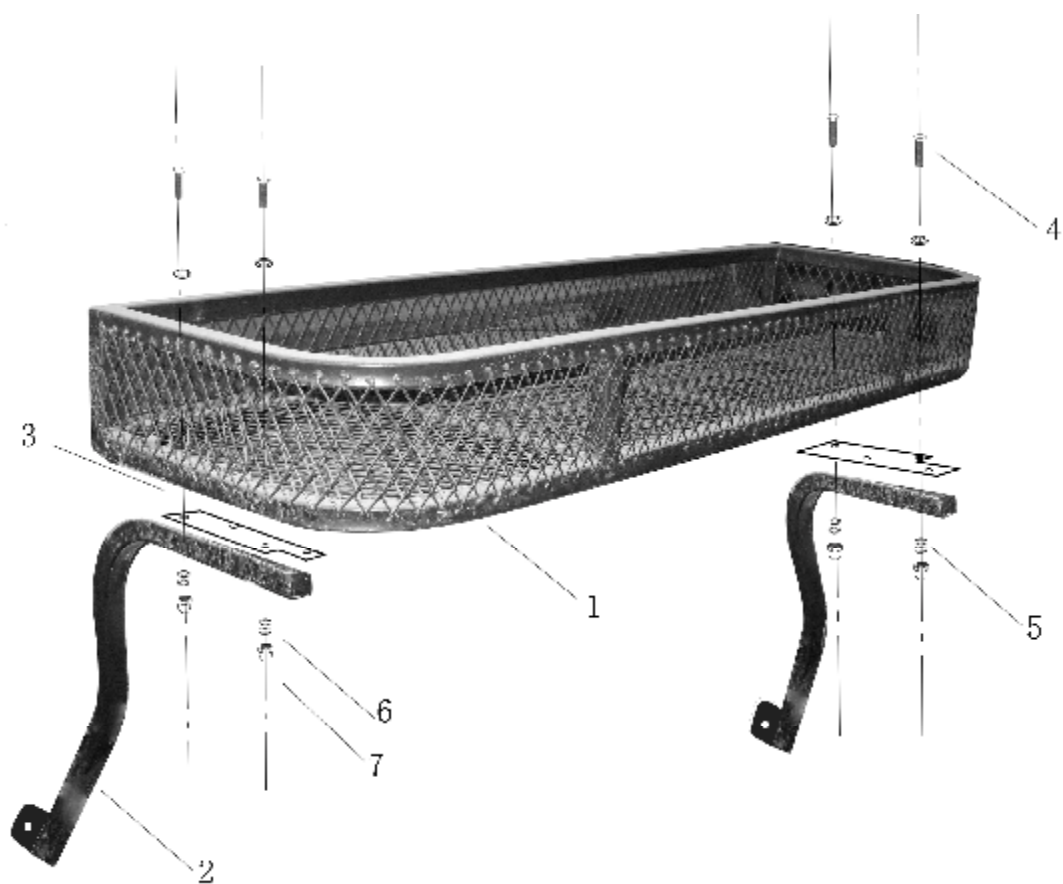
2-1 Chassis, floor mat, rocker panel (车架总成、地板革、侧护板)



2-1 Chassis, floor mat, rocker panel (车架总成、地板革、侧护板)

Item No	Part No	Description	中文名称	Qty	Remark
1	2028-5106006	Floor mat	地板革	1	rubber
2	2024-9005003YY-001	Bottom plate	下底板	1	Q235
3	2024-5102011-101	Front plate	前档板	1	plastic
4	Q4400518	Round head rivet M5x18.08	黑锌开口型扁圆头抽芯铆钉 M5×18.08	12	
5	2020A-5302001	Rocker panel	侧护板	2	Eudipleural
6	Q2730625	Cross self tapping bolt M6*25	十字槽大半圆头自攻螺钉 M6×25	6	
7	2020A-5101000	Steel vehicle assembly	车架总成	1	

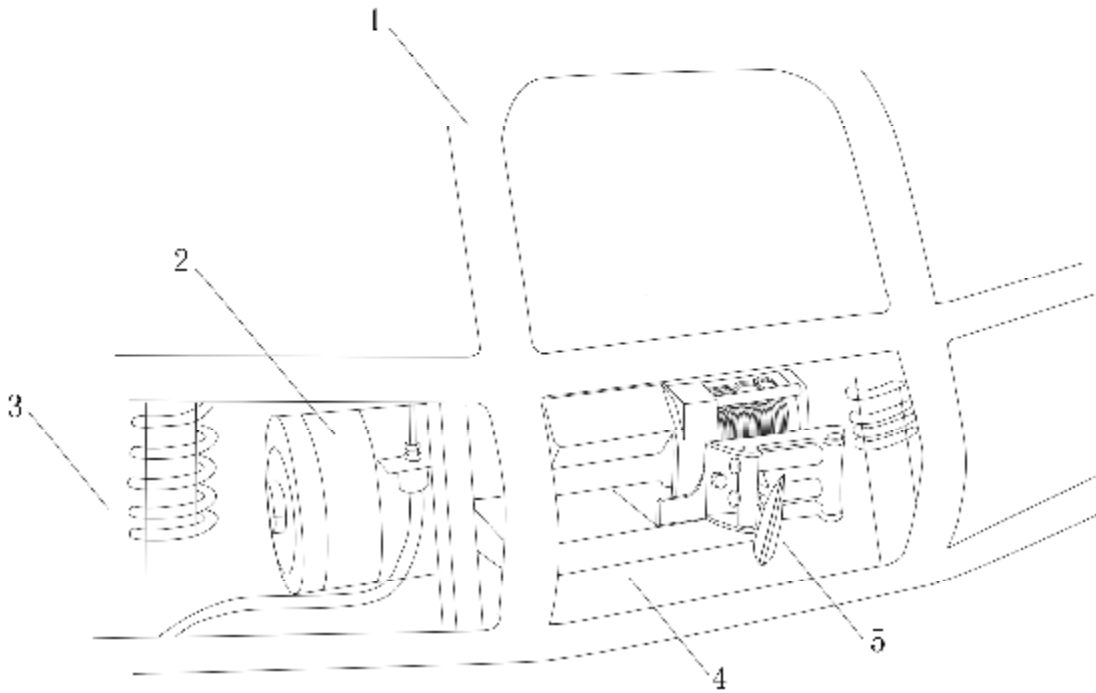
2-2 Front basket (option) (前篮 (选装))



2-2 Front basket (option) (前篮 (选装))

Item No	Part No		Description	Qty	Remark
1	6020A4D-5601003	Front basket	前 篮	1	
2	6020A4D-5601002	Front basket bracket 2	前篮支架 2	2	Eudipleural
3	6020A4D-5601005	Front basket bracket	前篮安装支架	1	For hinged windshield
4	Q150B0855-304H	Black nickel bolt M8×55	黑镍六角头螺栓 M8×55	4	
5	Q40108-304H	Black nickel gasket M8	黑镍平垫圈 M8	4	
6	Q40308-304H	Black nickel gasket spring M8	黑镍弹簧垫圈 M8	4	
7	Q394B08-304H	Black nickel operculiform nut M8	黑镍盖形螺母 M8	4	

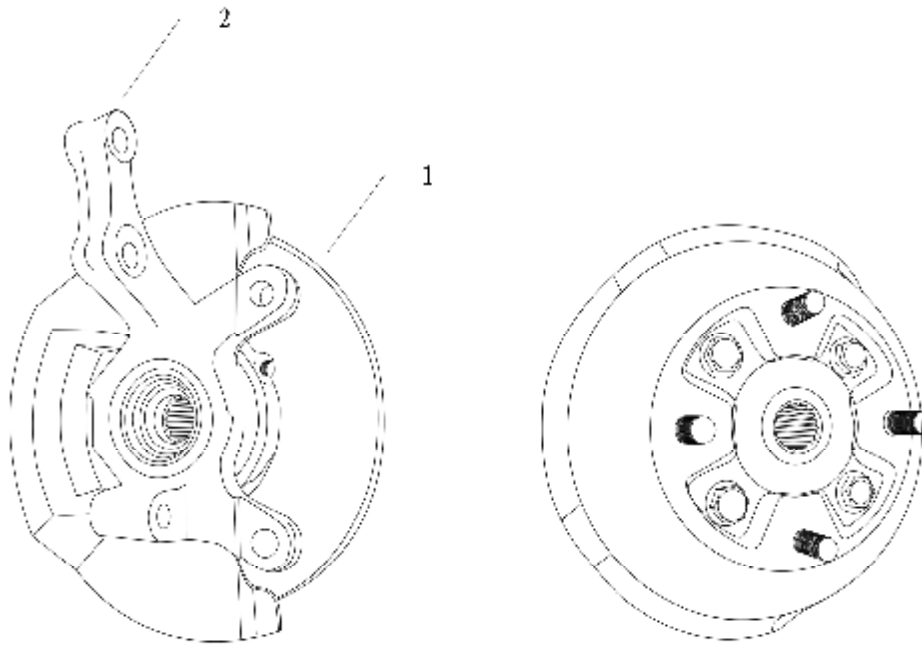
2-3 Winch (电动绞盘)



2-3 Winch (电动绞盘)

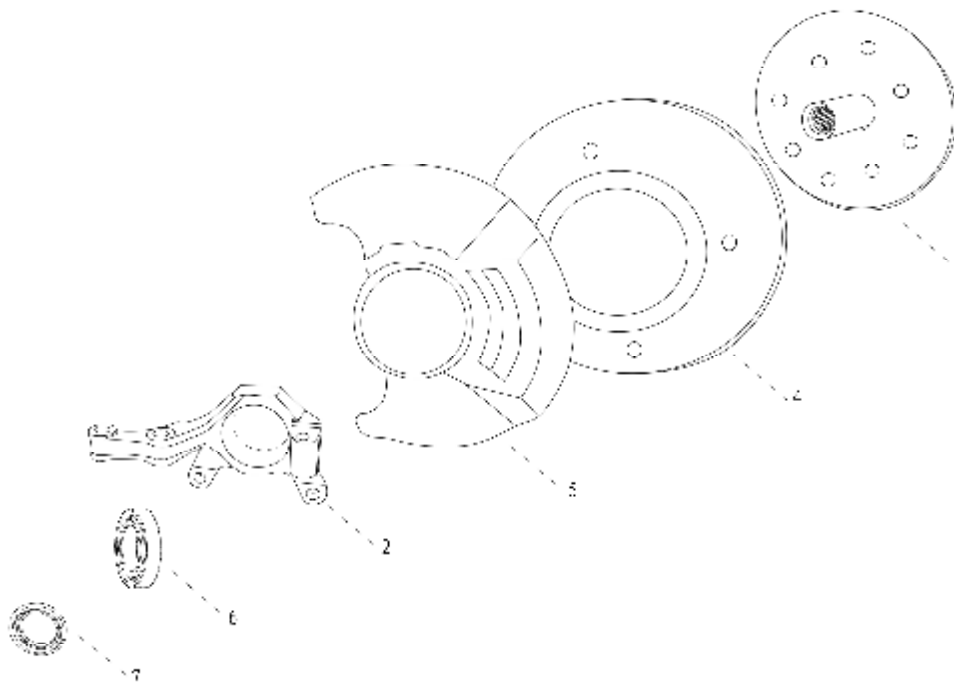
Item No	Part No	Description	Description	Qty	Remark
1	2020A-5207010	Front bumper assembly	前保险杠总成	1	
2	XQ-3.8A	motor	电机	2	
3	EG-2020A-2905000	Front shock absorber	前减震器	2	
4	2020A-9015011	Winch bracket	绞盘支架	1	
5	2020A-9015012	winch	电动绞盘	1	

3-1 Brake Assembly Rear (后轮制动器)



图为右件，左件与此对称

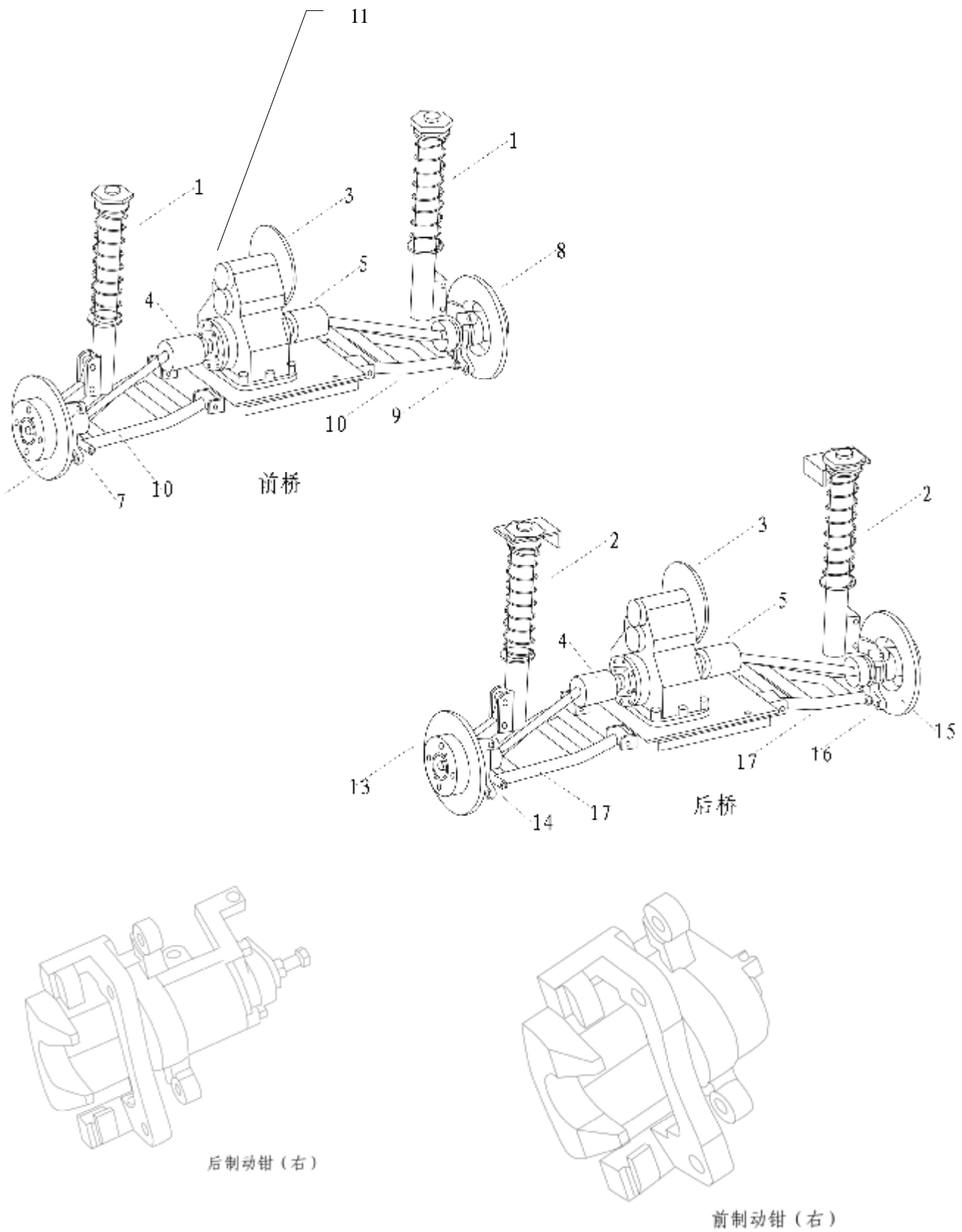
The above picture is the right part, the left part is Eudipleural with the right part



3-1 Rear Brake Assembly (后轮制动器)

Item No	Part No	Description	Description	Qty	Remark
1	ZL3501RA0000	right steering knuckle with rear brake assembly	右后转向节带制动器总成	1	left
	ZL3501LA0000	left steering knuckle with rear brake assembly	左后转向节带制动器总成	1	right
2		Left steering knuckle for front brake	右前转向节	1	
3		Front hub assembly	前轮毂带毂总成	1	
4		Front brake disk	前制动盘	1	
5		Steering knuckle board	转向节挡板	1	
6		Bearing	轴承	1	
7		Oil seal	油封	1	

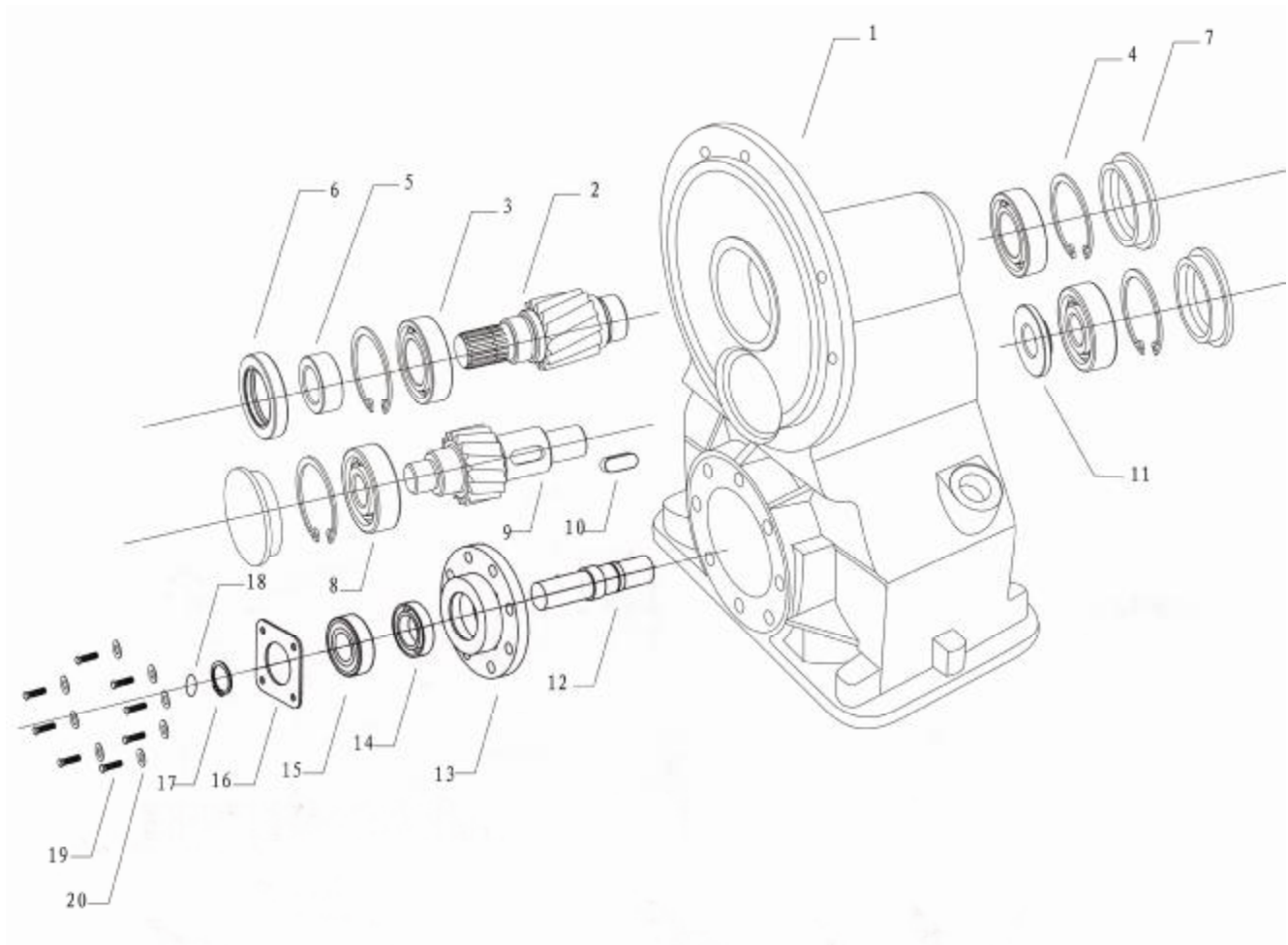
4-1 Front Axle, Rear Axle Assembly (前桥、后桥总成)



4-1 Front Axle, Rear Axle Assembly (前桥、后桥总成)

Item No	Part No	Description	中文名称	Qty	Remark
1	EG2020A-2904011	Front shock absorber assy.	前减震器总成	2	
2	EG2020A-2905000	Rear shock absorber assy.	后减震器总成	2	
3	EG200A-2407000	Differential assy.	减速器总成	2	
4	EG2020A-2201000	Left transmission shaft assy.	左传动轴总成	2	
5	EG2020A-2203000	Right transmission shaft assy.	右传动轴总成	2	
6	ZL3501LB0000	Left steering knuckle with front brake assembly	左前转向节带制动器总成	1	
7		Left brake caliper for front brake	左前制动钳	1	
8	ZL3501RB0000	right steering knuckle with front brake assembly	右前转向节带制动器总成	1	
9		right brake caliper for front brake	右前制动钳	1	
10	EG2020A-2906000	Front rocker arm assembly	前下摆臂总成	2	
11	EG2020A-2400000	Rear end assembly	车桥总成	2	
13	ZL3501LD	Left steering knuckle with rear brake assembly	左后转向节带制动器总成	1	
14		Left brake caliper for rear brake	左后制动钳	1	
15	ZL3501RD	Right steering knuckle with rear brake assembly	右后转向节带制动器总成	1	
16		Right brake caliper for rear brake	右后制动钳	1	
17	EG2020A-2916000	Rear rocker arm assembly	后下摆臂总成	2	

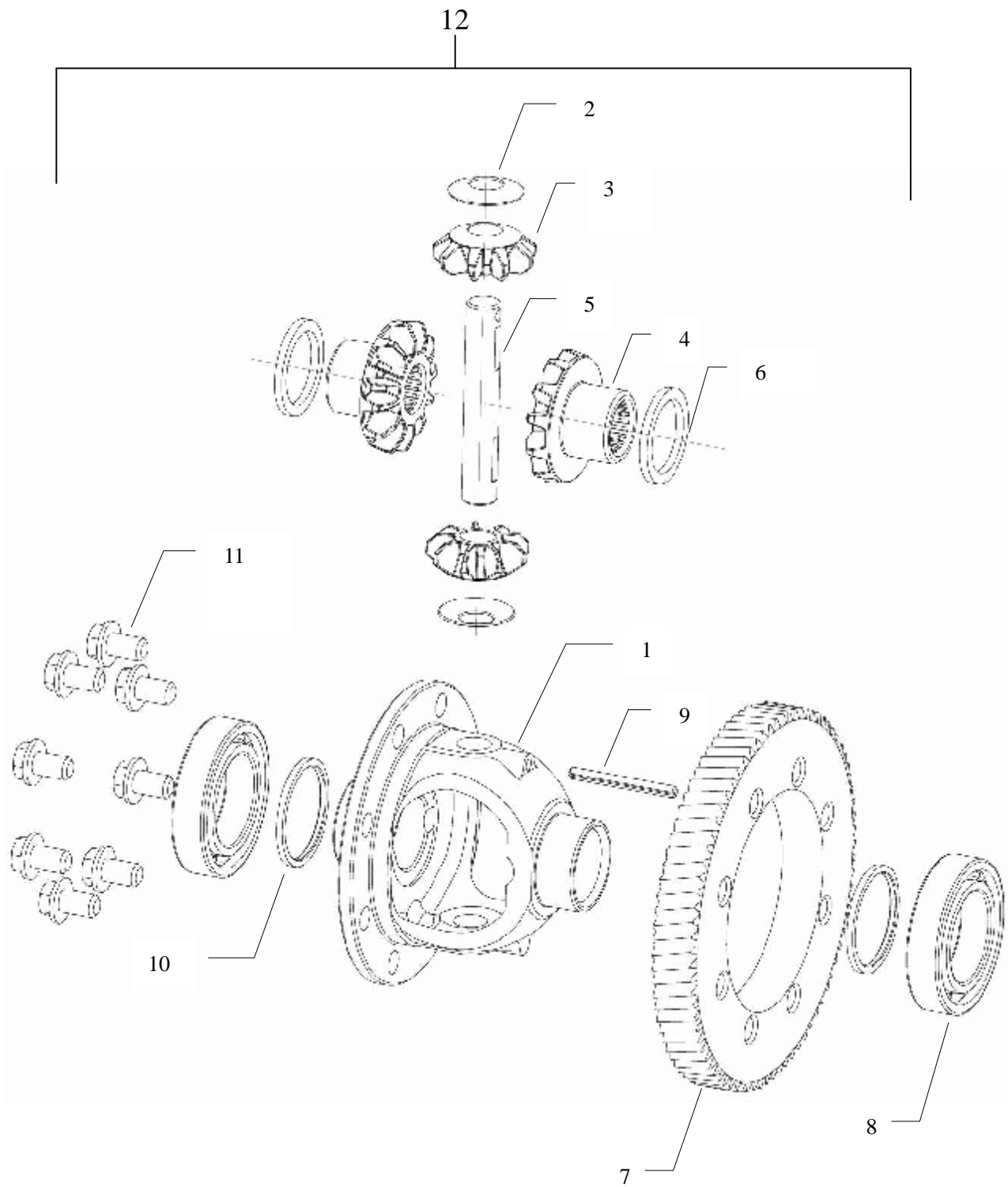
5-1 Retarder Assembly (主减速器总成)



5-1 Retarder Assembly (主减速器总成)

Item No	Part No	Description	中文名称	Qty	Remark
1	2403001-EG2024-000	Retarder case	减速器壳体	1	
2	2403301-EG2024-000	Gear shaft I	齿轮轴 I	1	
3	9010006-6005RZ-000	Bearing 6005/P6	轴承 6005/P6	2	
4	2403011-EG2024-000	Shield ring 47	挡圈 47	4	
5	9010007-6005RZ-000	Bush	衬套	1	
6	2403302-EG2024-000	Oil seal (F) B32×47×8	油封 (F) B32×47×8	1	
7	2403006-EG2024-000	Blanking adapter	胶盖	3	
8	9010006-6303RS-000	Bearing 6303/P6	轴承 6303/P6	2	
9	2403201-EG2024-000	Gear shaft II	齿轮轴 II	1	
10	8×20	Bond 8×20	键 8×20	1	
11	9010007-6303RS-000	Spacer	隔套	1	
12		Gear shaft III	齿轮轴 III	1	
13	EG2020A-2401004	Flange disk	法兰盘	4	
14	47-28-10	oil seal	油封	1	
15	6205/P6 Z2	bearing	轴承	1	
16		bearing board	轴承挡板	1	
17	Q43125	Spring clamp for shaft	轴用弹性挡圈	1	
18	Q43724	Steel clamp for shaft	轴用钢丝挡圈	1	
19	Q150B1025	Hexagon bolt M10*30	六角头螺栓 M10×30	36	
20	Q40110	Flat spacer	平垫圈	36	

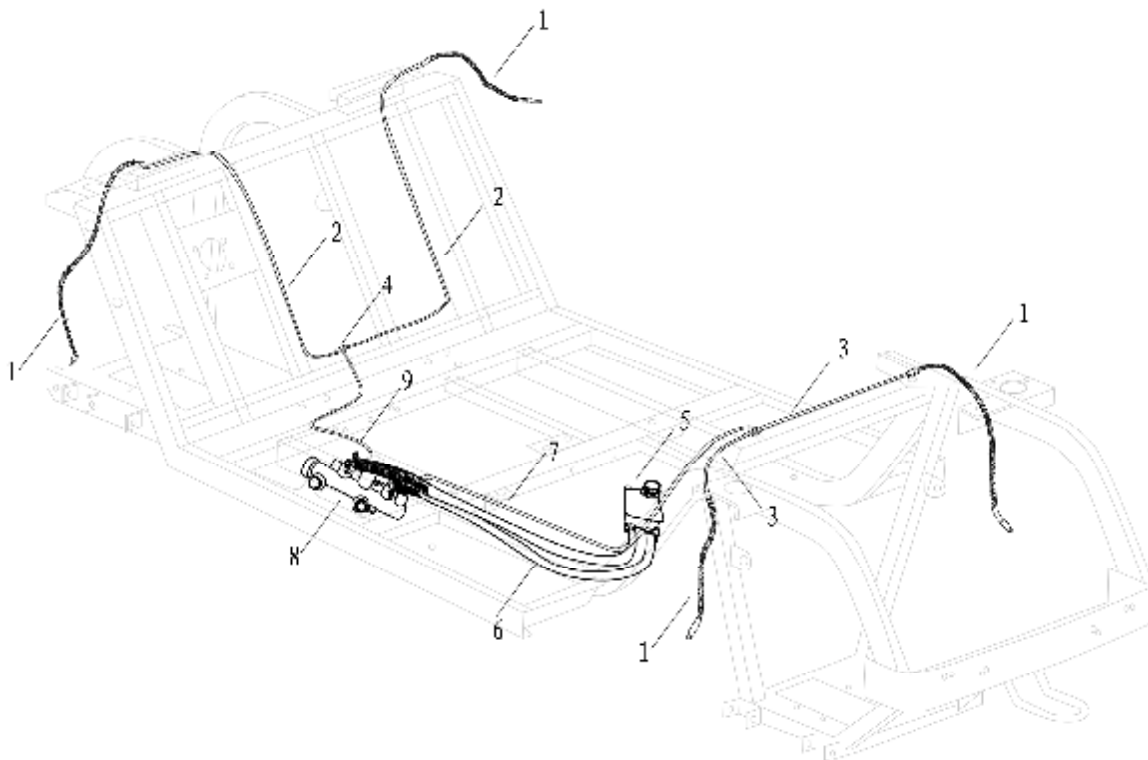
5-2 Differential (12.49 速比差速器)



5-2 Differential (12.49 速比差速器)

Item No	Part No	Description	中文名称	Qty	Remark
1	DP-146	Differential housing	差速器壳	1	
2	DP-147	Spheroidal thrust washer	球型止推垫圈	1	
3	DP-148	Planetary gear	行星齿轮	2	
4	DP-149	Axle shaft gear	半轴齿轮	2	
5	DP-150	Planetary gear shaft	行星齿轮轴	1	
6	DP-151	Adjusting gasket	调整垫片	2	
7	DP-152	Large gear	大齿轮	1	
8	DP-153	Bearing 6008	轴承 6008	2	
9	DP-154	Pin 5×45	销 5×45	1	
10	DP-155	Washer	垫圈	2	
11	DP-156	Driving bevel gear screw	驱动锥齿轮螺钉	8	
12	EG200A-2407000	Differential assembly	差速器总成	1	

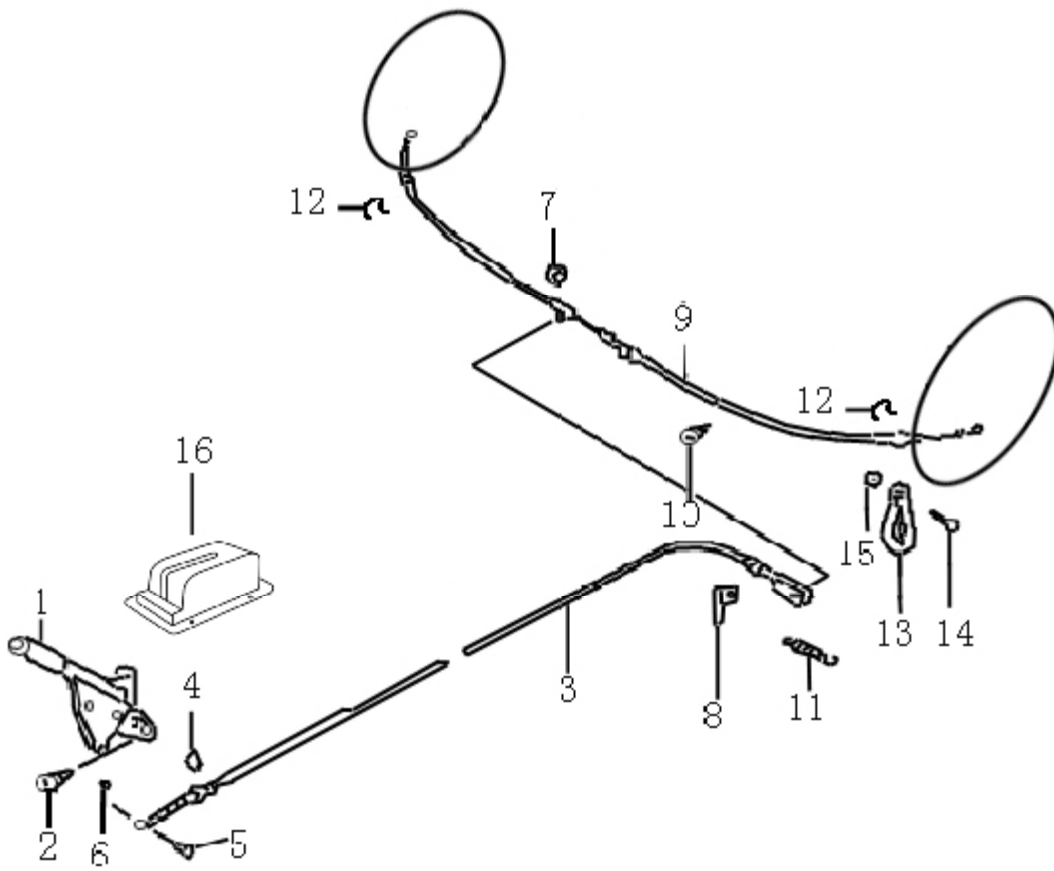
5-3 Master Cylinder, Brake Pipe (制动总泵、制动管路)



5-3 Master Cylinder, Brake Pipe (制动总泵、制动管路)

Item No	Part No	Description	中文名称	Qty	Remark
1	2048-3506010	Brake cable	制动软管总成	4	
2	2044-2805050	Oil pipe 650mm	油管—前三通至前软管	2	
3	6082-2805060	Oil pipe 420mm	油管—后三通至后软管	2	
4	6082-2805120	Tri-joint	三通	2	
5	6082-2805010	Brake liquid tank assembly	制动储液罐总成	1	
6	JG-XJG-10*3.5*1500	Brake cable	耐油软管	2	length be decided by production line
7	6041-2805020	Oil pipe 980mm	油管—总泵至后三通	1	
8	6041-2804000	Master cylinder assembly	制动总泵带推杆总成	1	
9	2044-2805050	Oil pipe 650mm	油管—总泵至前三通	1	

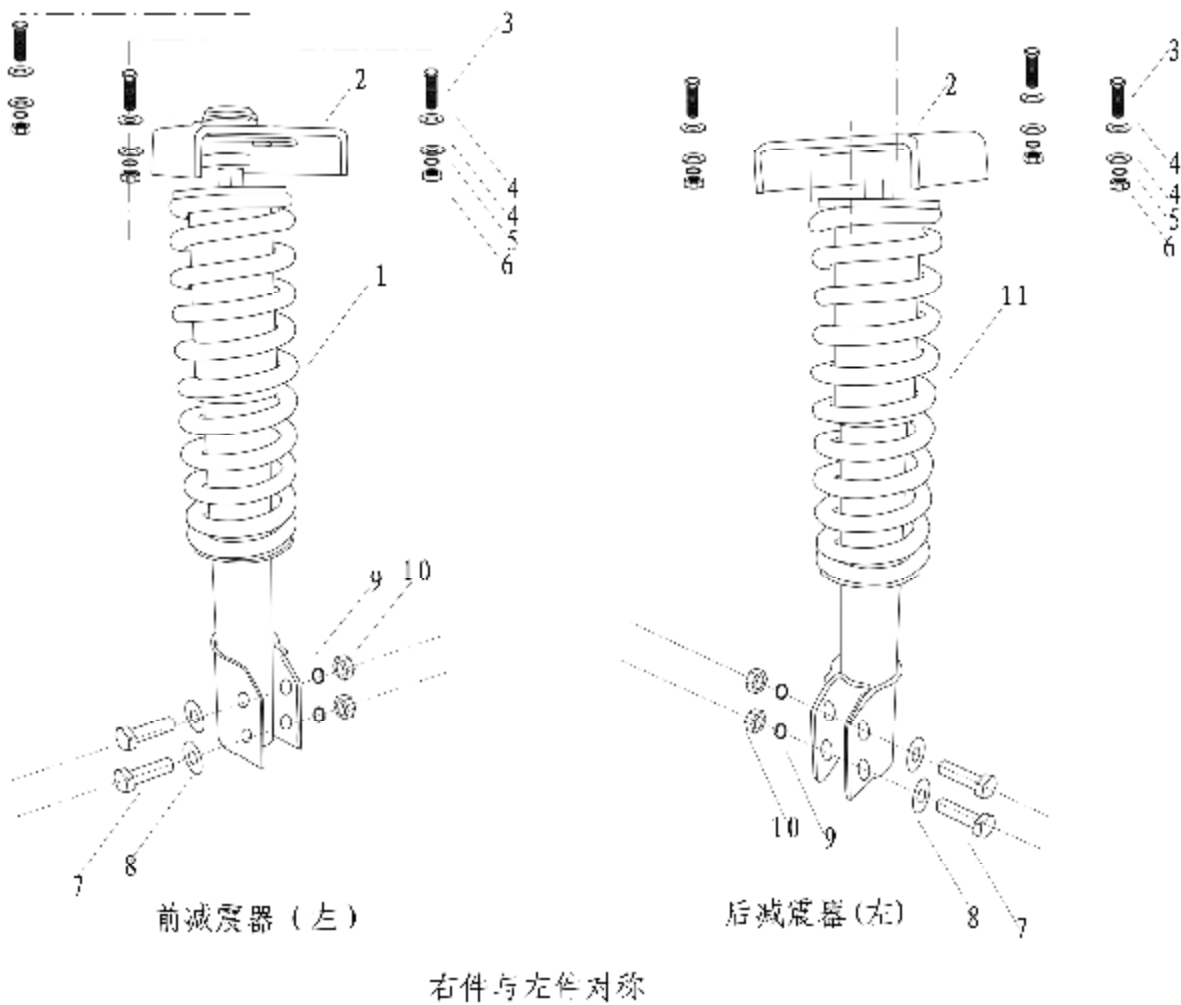
5-4 Parking Brake Handle (驻车制动操纵)



5-4 Parking Brake Handle (驻车制动操纵)

Item No	Part No	Description	中文名称	Qty	Remark
1	54100-85103A	Parking brake control handle	驻车制动操纵手柄	1	
2	01550-08203	Parking brake lever bolt	手制动杆螺栓	2	
3	2044-85012	Parking brake tightwire No.1	1号驻车制动钢索总成	1	
4	09383-12001	Cable split retaining ring 1	1号钢索开口挡圈	1	
5	09200-08049	Cable clutch pin 1	1号钢索连接销	1	
6	04111-25126	Cable clutch pin 1	1号钢索连接销	1	
7	09308-11006	Cable grommet 1	1号钢索胶圈	1	
8	54482-79000	Cable stopper	钢索挡板	1	
9	EG2020A-3508020	Parking brake tightwire No.2	2号驻车制动钢索总成	1	
10	01550-06103	Cable bracket bolt	钢索支架螺栓	2	
11	09443-15008	Cable return spring	钢索回位弹簧	1	
12	54491-	Parking brake cable clip 2	2号驻车制动钢索卡箍	2	
13	54491-85500	Cable flying rings	钢索吊环	2	
14	09116-06146	Cable flying rings bolt	钢索吊环螺栓	2	
15	08310-00063	Cable flying rings nut	钢索吊环螺母	2	
16	6020A4D-2807001	Hand brake cover	手刹罩	1	

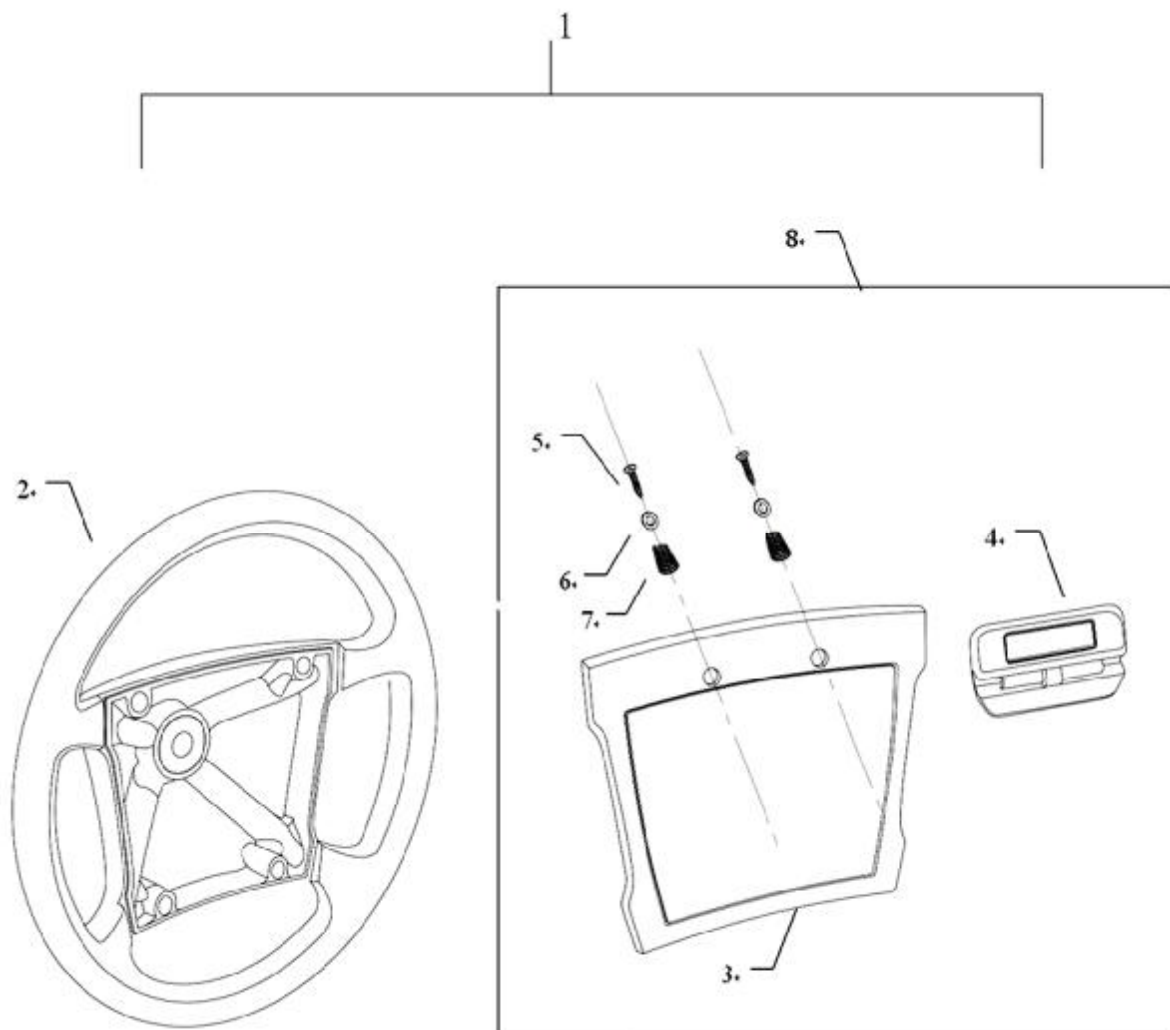
6-1 Front, Rear Shock Absorber (前、后减震器)



6-1 Front, Rear Shock Absorber (前、后减震器)

Item No	Part No	Description	中文名称	Qty	Remark
1	EG2020A-2905000	Front shock absorber assembly	前减震器总成	2	
2	EG2020A-2904011	Mounting board of shock absorber	减震器上安装板	4	Welding on the frame
3	Q150B0840	Hexagon Bolt M8x10	六角头螺栓 M8×40	12	
4	Q40208	larger spacer	大垫圈	24	
5	Q470308	Spring gasket	弹簧垫圈	12	
6	Q340B08	Hexagon Nut	1 型六角螺母	12	
7	Q150B1260	Hexagon bolt M12x60	六角头螺栓 M12×60	8	
8	Q40212	larger spacer	大垫圈	8	
9	Q40312	Spring gasket	弹簧垫圈	8	
10	Q340B12	Hexagon Nut	1 型六角螺母	8	
11	EG2020A-2915000	Rear shock absorber	后减震器总成	2	

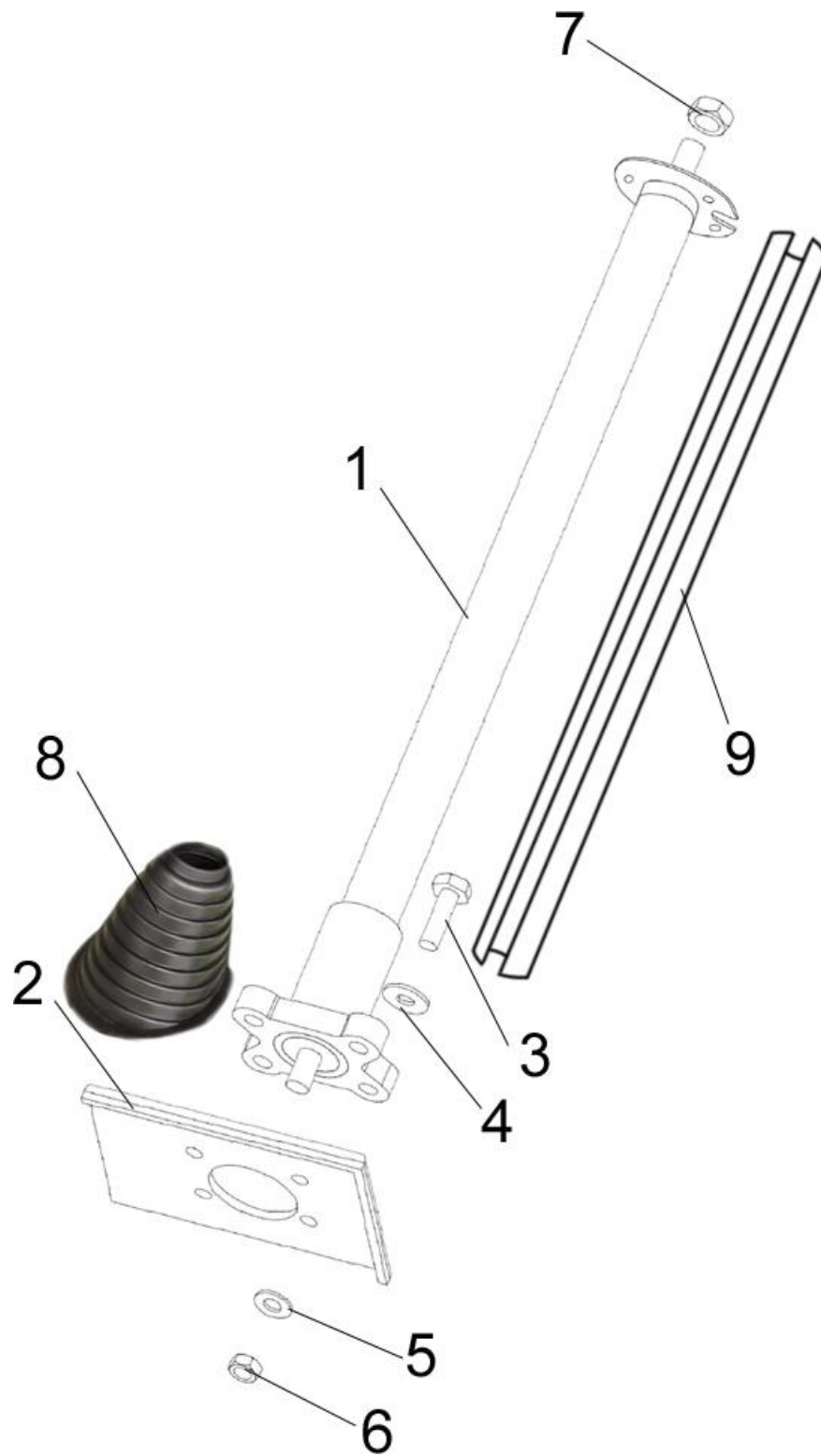
7-1 Steering Wheel Assembly (方向盘总成)



7-1 Steering Wheel Assembly (方向盘总成)

Item No	Part No	Description	中文名称	Qty	Remark
1	2024-2702010	Steering wheel assembly	方向盘总成	1	
2	2024-2702011	Steering wheel	方向盘	1	
3	2024-2704017	Steering wheel cover	方向盘盖	1	
4	2024-2704016	Folder	记分夹	1	
5	Q2714230	Self-tapping screw	自攻螺钉	2	
6	Q40205-304H	Gasket	平垫圈	2	
7		Spring	弹簧	2	
8	2024-2704016	Score card nip	计分夹总成	1	

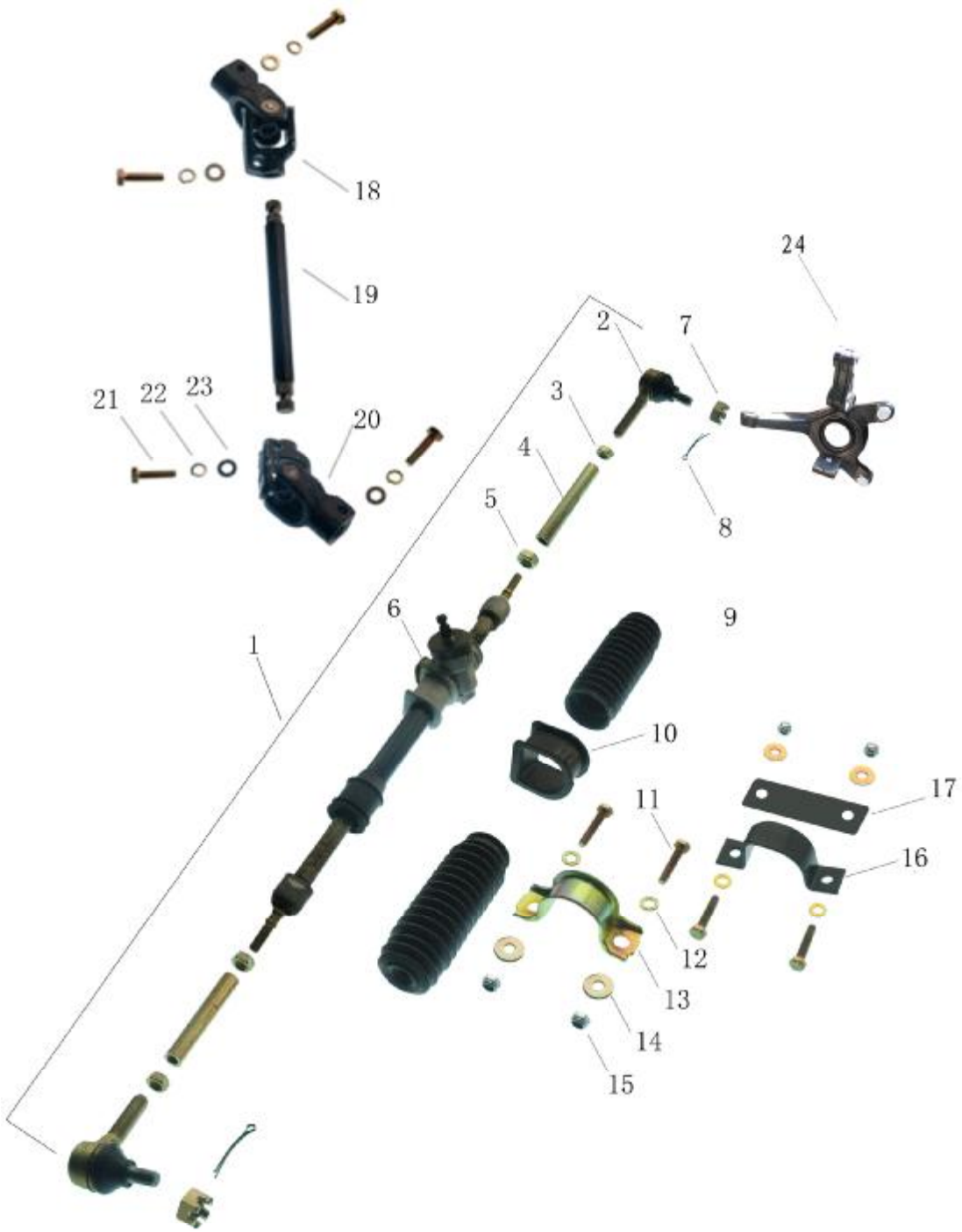
7-2 Steering Shaft Assembly (转向轴总成)



7-2 Steering Shaft Assembly (转向轴总成)

Item	Part No	Description	中文名称	Qty	Remark
1	2024-2704010A	Steering shaft assembly	转向轴管总成	1	
2		Bracket steering shaft	转向管柱支架	1	
3	Q150B1040	Bolt M10×40	六角头螺栓 M10×40	4	
4	Q40110	Gasket M10	平垫圈 M10	4	
5	Q40310	Gasket spring M10	弹垫 M10	4	
6	Q340B10	Nut M10	1 型六角螺母 M10	4	
7	Q32624	Self-lock nut M24	2 型非金属嵌件六角锁紧螺母 M24	1	
8	2024-2704013	Steering shaft bushing	方向柱护罩	1	
9	2024-2705011	Steering shaft jacket	方向柱护套	1	

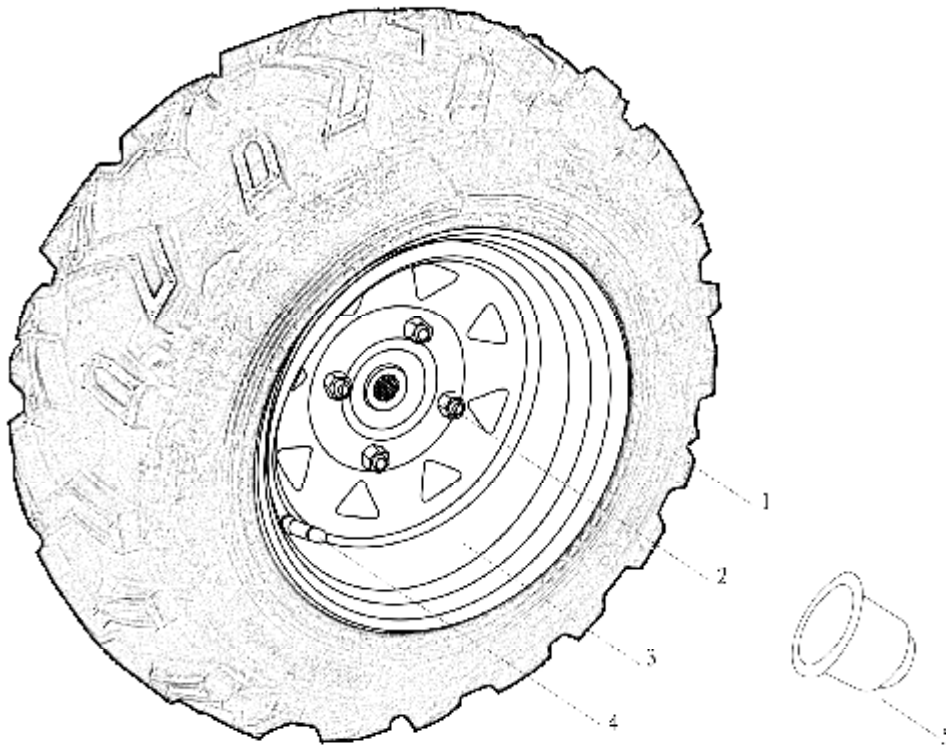
7-3 Steering Gear Assembly (转向器总成)



7-3 Steering Gear Assembly (转向器总成)

Item No	Part No	Description	中文名称	Qty	Remark
1	TH-FXJ-019	Steering gear assembly	方向机总成	1	
2		Ball connector	球头	2	
3	Q340B14	Nut M14	1 型六角螺母 M14	2	
4		Rod	连杆	2	
5	Q340B12	Nut M12	1 型六角螺母 M12	2	
6	6117-2701000	Steering gear housing(Include item 2-6)	转向器壳体组件 (转向器及拉杆球头组件)	1	
7	Q381B12	Slotted nut M12	1 型六角开槽螺母—细牙 M12	2	
8	Q5000220	Split pin $\Phi 2.5 \times 20$	开口销 $\Phi 2.5 \times 20$	2	
9		Dustproof cover	防尘罩	2	
10		Left bracket bush	左托架衬套	1	
11	Q150B0840	Bolt M8 \times 40	六角头螺栓 M8 \times 40	4	
12	Q40108	Gasket M8	平垫圈 M8	4	
13	3042-2703001	Right bracket of steering gear	转向器右支架	1	
14	Q40208	Big gasket M8	大垫圈 M8	4	
15	Q32608	Self-lock nut M8	2 型非金属嵌件六角锁紧螺母 M8	4	
16	2020A-2703002	Left bracket of steering gear	转向器左支架	1	
17		Bracket plate	支架压板		
17	Q5000440	Split pin $\Phi 4 \times 40$	开口销 $\Phi 4 \times 40$	2	
18		Universal joint	万向节		
19		Steering lower shaft	转向轴下轴		
20		Universal joint	万向节		
21	Q150B0830	Bolt M8 \times 30	六角头螺栓 M8 \times 30	4	
22	Q40308	Gasket spring M8	弹垫 M8	4	
23	Q40108	Gasket M8	平垫圈 M8	4	
24		Steering knuckle	转向节	4	

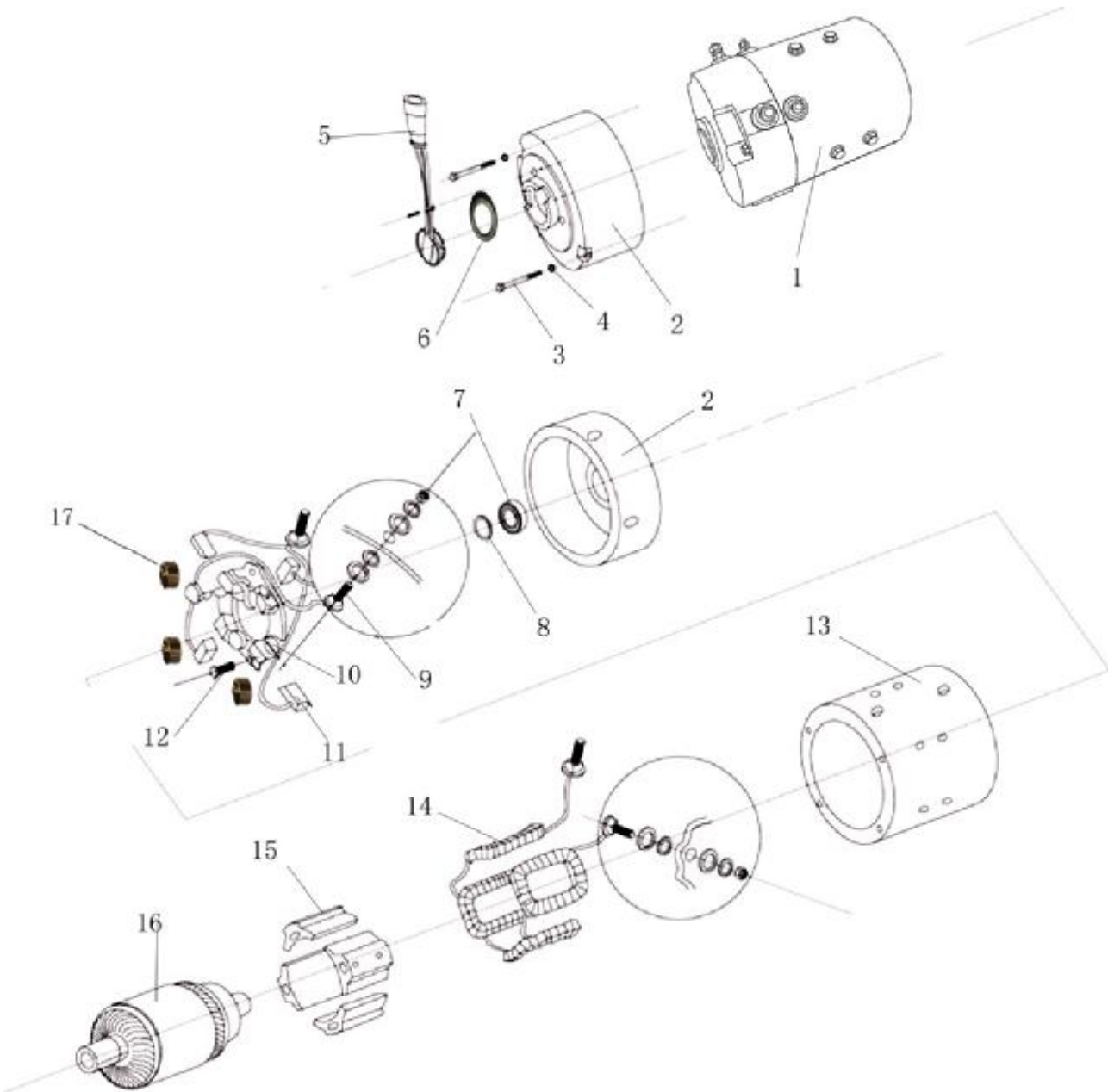
8-1 Wheel (车轮)



8-1 Wheel (车轮)

Item No	Part No	Description	中文名称	Qty	Remark
1	25*8-12/F938-6PR	Tyre	轮胎总成	4	
2	09159-12015	Wheel nut	轮胎螺母	16	
3	EG2020A-3101010	Rim, steel	钢圈	4	
4	6082-2601011	Tyre valve	气门嘴	4	
5	2024-2301002	Spindle cap	大轴端盖	4	

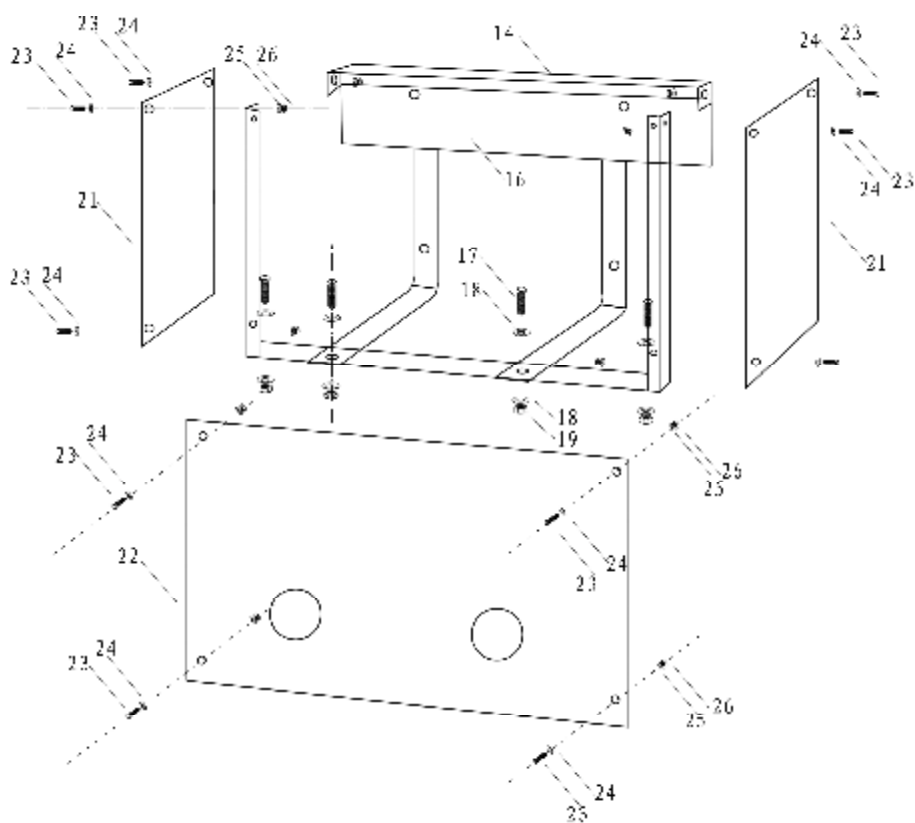
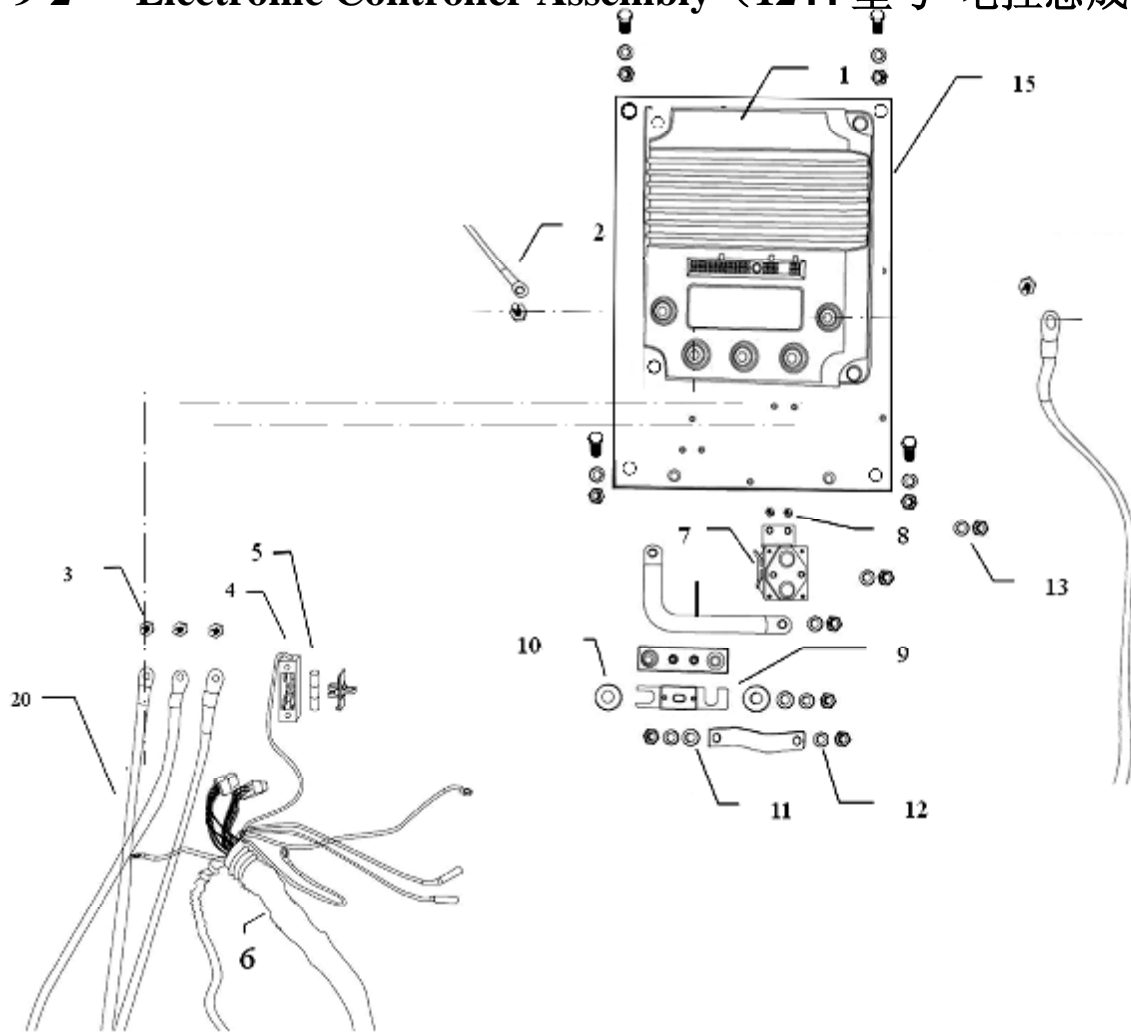
9-1 Motor (电机)



9-1 Motor Assembly (48V3.8KW 电机总成)

Item No	Part No	Description	中文名称	Qty	Remark
1	XQ-3.8a	Motor assembly Changyin	电机总成(常银)	1	
2	MT-002	Commutator end of cover	外壳换向器末端	1	
3	MT-003	Bolt	螺栓	2	
4	MT-004	Gasket spring	弹垫	2	
5	XQ-3.8/10PMS08	Speed sensor for Chinese motor	速度传感器(常银)	1	
6	10PMS08-01	magnet coil	磁环	1	
7	MT-007	Bearing	轴承	1	
8	MT-008	Gland ring	压紧环	1	
9	MT-009	Armature binding post	电枢接线柱	2	
10	XQ-3-4/040	Brush shelf	刷架	4	
11	XQ-3.8/020	Carbon brush for Chinese motor	碳刷(国产电机)	4	
12	MT-012	Bolt	螺栓	4	
13	MT-013	Motor case	电机壳体	1	
14	MT-014	Field coil kit	励磁线圈	4	
15	MT-015	Pole core	磁极铁心	4	
16	MT-016	Armature	电枢	1	
17	XQ-3.8/030	Brush spring	压簧	1	

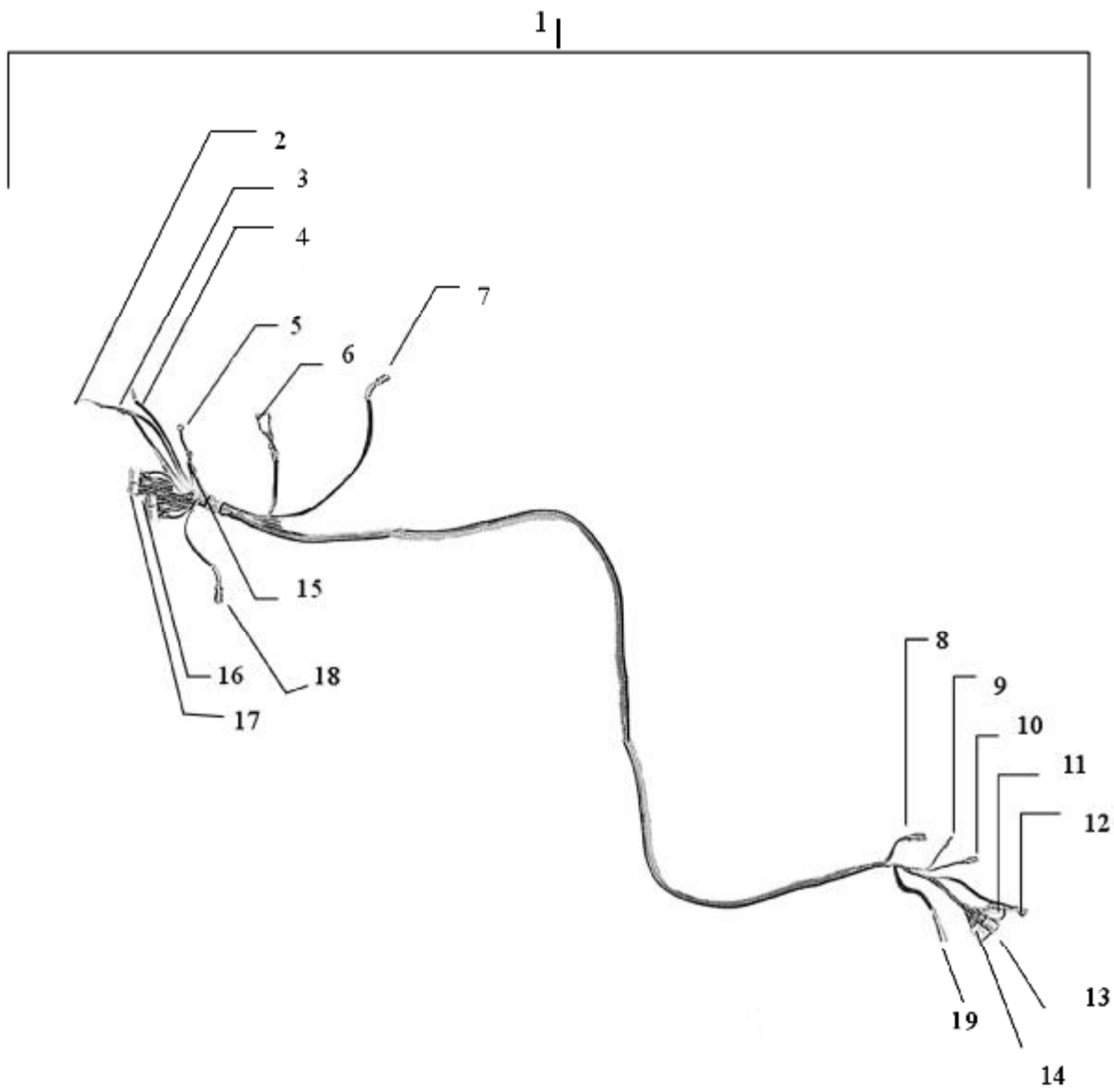
9-2 Electronic Controller Assembly (1244 型号 电控总成)



9-2 Electronic Controller Assembly (1244 型号 电控总成)

Item No	Part No	Description	中文名称	Qty	Remark
1	1244-5461	Controller 1244	控制器	2	
2	6042-3018011	Connect wire 8 ² ×600mm	连接线 8 ² ×600mm	2	Black&Red one each
	2020A-3018303	Connect wire 8 ² ×2700mm	连接线 8 ² ×2700mm	2	Black&Red one each
3	Q150B0820	hexagon bolt M8×20	外六角螺栓 M8×20	6	
	Q150B0616	hexagon bolt M8×16	外六角螺栓 M6×16	4	
4	F26-RT14	Attach fuse socket	附件熔断器座	1	10*38
5	F26-R005	Attach fuse	附件熔断器	1	10*38/10A
6	2020A-3018301	controlling wiring harness	控制线束	1	
7	SW80B- 156	Main contactor	主接触器	2	
8	Q2140412	Cross slot bolt M4×12	十字槽盘头螺钉 M4×12	4	
9	F26-ANL-425A	Main fuse	主熔断器	2	425A
10	Q40208	Big gasket M8	加大平垫 M8	2	
11	Q40108	Gasket M8	平垫 M8	10	
12	Q40308	Gasket spring M8	弹垫 M8	10	
13	Q340B08	nut M8	1 型六角螺母 M8	10	
14	2020A-1005054	Controller bracket	电控支架	1	
15	2024-1005318C	Heat diffusion plate	散热铝板	2	
16	2020A-1005051	Controller front board	电控前挡板	1	
17	Q150B0825	Hexagon bolt M8*25	六角头螺栓 M8×25	4	
18	Q40208	Larger washer M8	大垫圈 M8	8	
19	Q360B08	Hexagon nut M8	2 型六角螺母 M8	4	
20	2020A-3018304	25 ² ×2700mm Cable	1244 电控与前轮电机连接线	2	Black&Red one each
	2024-3018011	25 ² ×600mm cable	1244 电控与后轮电机连接线	2	Black&Red one each
	2044-3018002	25 ² ×1000mm cable	1244 电控电池连接线	2	Black&Red one each
	2024-3018007	25 ² ×300mm cable	两个电控 B-之间连接线	1	
	2024-3018007	25 ² ×300mm cable	两个主保险之间连接线	1	
21	2020A-1005053	Controller side board	电控侧挡板	2	
22	2020A-1005052	Controller rear board	电控后挡板	1	
23	Q150B0620	Hexagon bolt M6*20	六角头螺栓 M6×20	10	
24	Q40106	Flat spacer M6	平垫圈 M6	20	
25	Q40306	Spring spacer	弹簧垫圈	10	
26	Q340B06	Hexagon nut	1 型六角螺母	10	

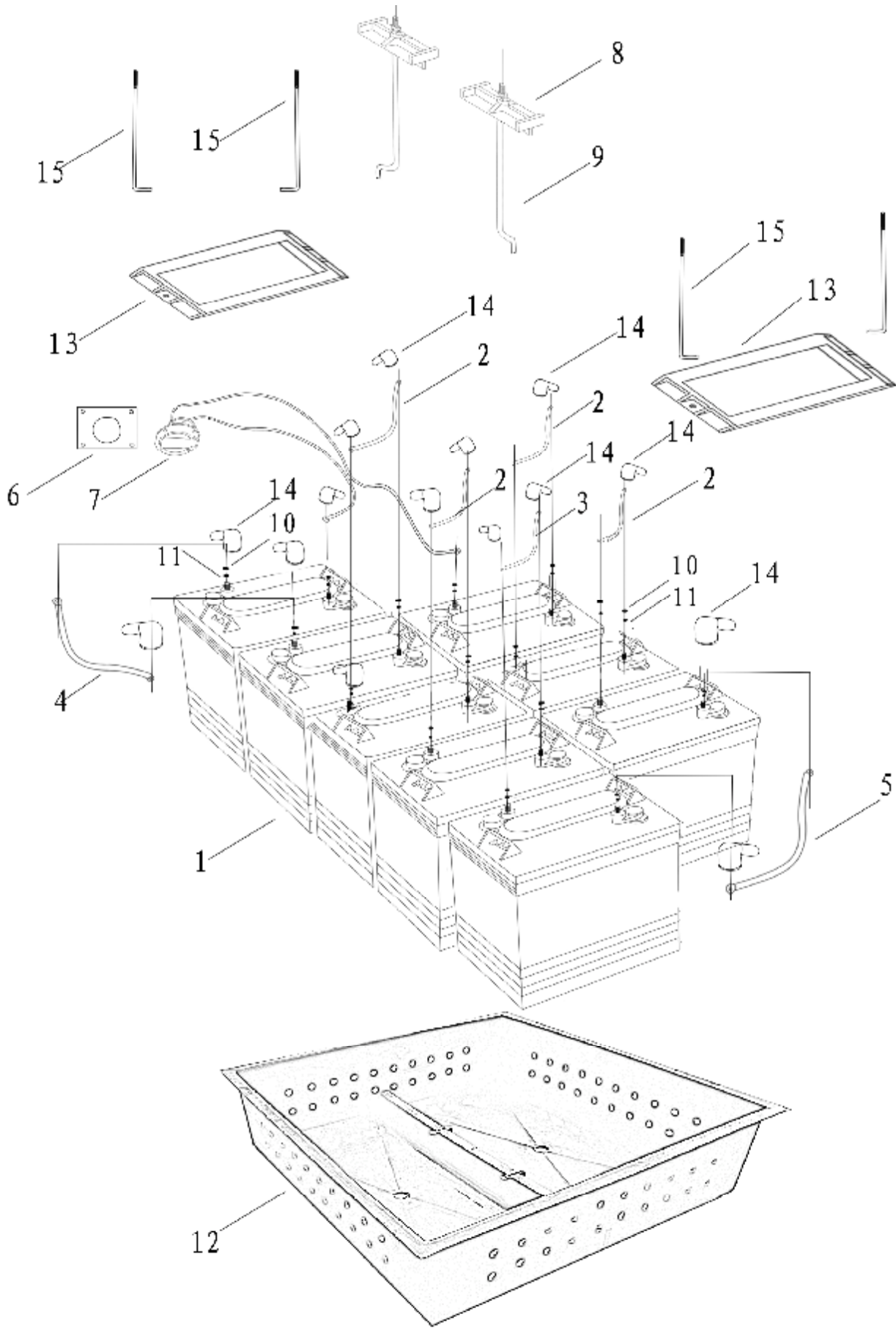
9-3 Harness (1244 型号 48V 控制线束)

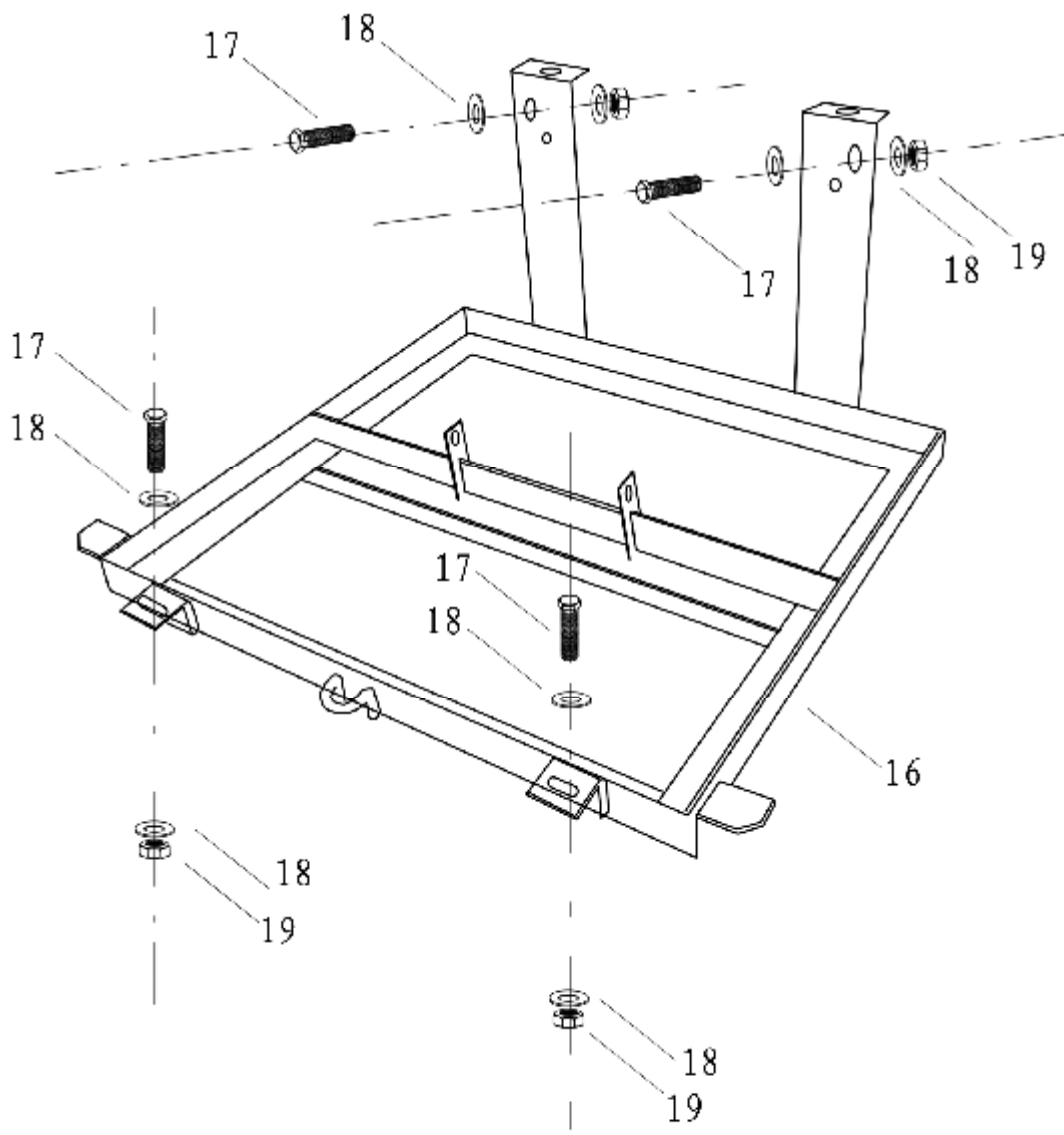


9-3 Harness (1244 型号 48V 控制线束)

Item No	Part No	Description	中文名称	Qty	Remark
1	2020A-3018301	controlling wiring harness	控制线束总成	1	For 1244
2		To 10A fuse output	10A 保险输出接口	1	
3		To Solenoid port 1	主接触头接口(1)	1	
4		To Solenoid port 2	主接触头接口(2)	1	
5		To negative power	负电源	1	
6		To Accelerator port	加速器接口	1	
7		To Charge protector port	充电保护器接口	1	
8		To 4X4 switch	四驱开关	1	
9		To reverse buzzer + power	倒车蜂鸣器正电源	1	
10		To Reverse buzzer - power	倒车蜂鸣器负电源	1	
11		To F/R swtich	前后开关	1	
12		To Electricity meter port	电量表接口	1	
13		To Ignition key	点火锁	1	
14		To 4 pin wiring port	4 孔附件 (灯具) 线束接口	1	
15		To Positive power	正电源		
16		To Controller port 1	电控接口 (1)	1	
17		To Controller port 2	电控接口 (2)	1	
18		To Speed sensor port	速度传感器接口	1	
19		To Dashboard port	仪表接口	1	
20	2020A-3018302	Accessory wiring harness	附加线束	1	

9-4 Batteries & Connect Wire (电池及连线)

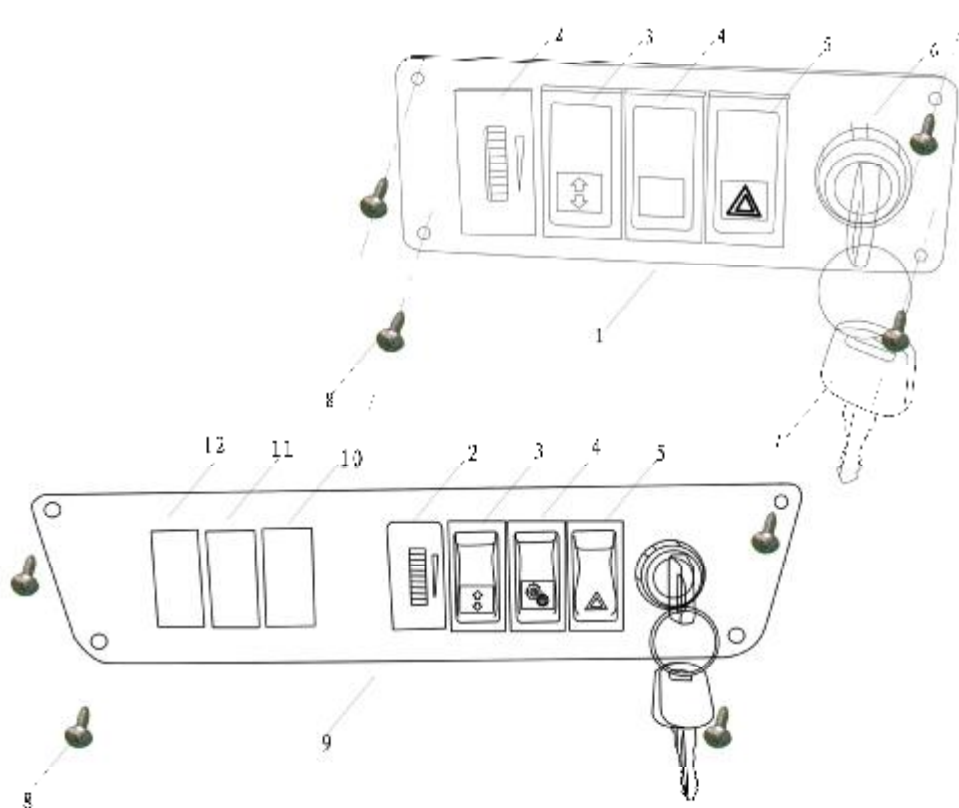




9-4 Batteries & Connect Wire (电池及连线)

Item No	Part No	Description	中文名称	Qty	Remark
1	T-105	Battery (T-105)	蓄电池 (T-105)	8	6V×8
2	6082-3018014	Connect wire	连接线	4	35 ² ×180mm
3	6082-3018005	Connect wire	连接线	1	35 ² ×200mm
4	6082-3018007	Connect wire	连接线	1	35 ² ×300mm
5	6082-3018020	Connect wire	连接线	1	35 ² ×380mm
6	2024-3022002	Charger jack	充电插座压板	1	
7	2025-3022015A	Charger receptacle	充电插座	1	
8	2024-9015032	Battery impact block	蓄电池压块	2	PC66
9	2024-1001001	Battery dead lever	蓄电池固定杆	2	
10	FB01009	British system nut	英制螺母	16	British 5/16-8
11	Q40308-304	Gasket spring M8	弹垫 M8	16	
12	2025-3029089	Battery box	电池盒	1	
13	2026-3029088	Battery impact block	单电池压块	2	
14	6082-1001002	Battery jacket	电池护套	16	
15	2024-1001002	Battery dead lever	单电池固定杆	4	
16	2026-5101050YY	battery box	电池框	1	
17	Q150B0825	Hexagon bolt	六角头螺栓	6	
18	Q40108	Flat spacer	平垫圈	12	
19	Q32608	Hexagon lock nut	2 型非金属嵌件六角锁紧螺母	6	

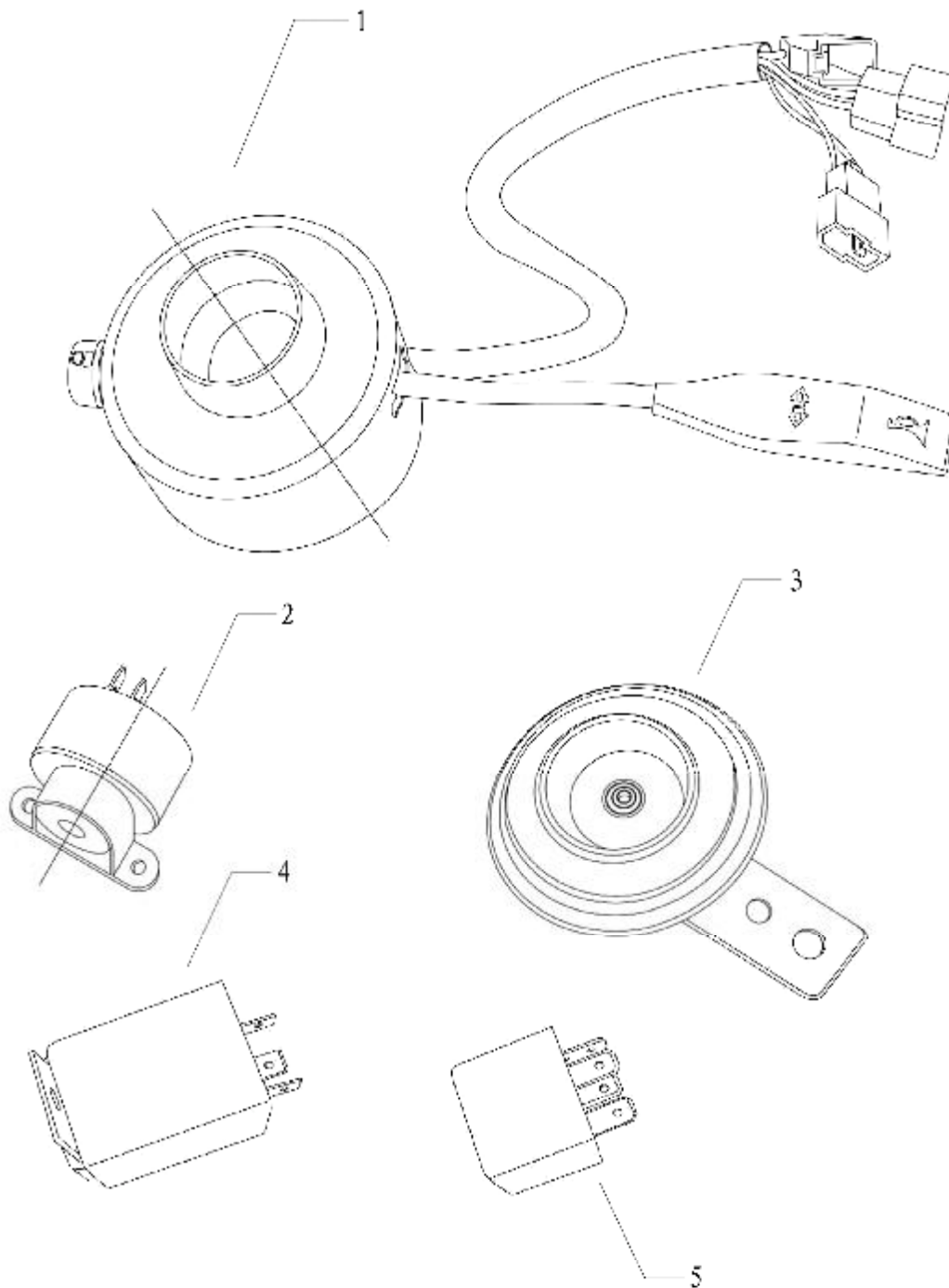
10-1 Instrument Panel, Start Key (仪表面板、启动开关)



10-1 Instrument Panel, Start Key (仪表面板、启动开关)

Item No	Part No	Description	中文名称	Qty	Remark
1	6020A4D-3004001	Instrument panel	仪表面板	1	
2	906D48BS	Electricity meter	电量表	1	
3	6042-3003002	Forwards/backwards switch	进退开关	1	
4	2028-3003002	Drive model switch	驱动模式开关	1	
5	6082-3003004	Hazard switch	危险报警开关	1	
6	JK423L-1	Ignition key	点火锁	1	
7	JK423L-001	Key	钥匙	2	
8	Q2730416-304H	Self-tapping screw M4×16	黑锌十字槽大半圆头自攻螺钉 M4×16	4	
9	6020A4D-3004001	Instrument panel	仪表面板	1	
10	6020A4D-3003002	Winch switch	绞盘开关	1	
11	6020A4D-3003003	Search light switch	探照灯开关		
12	6020A4D-3003001	Feeder switch	喂食器开关		

10-2 Combination switch, Loud speaker, Backup buzzer, Electronic flasher, Auxiliary relay (组合开关、喇叭、倒车蜂鸣器、电子闪光器、辅助继电器)

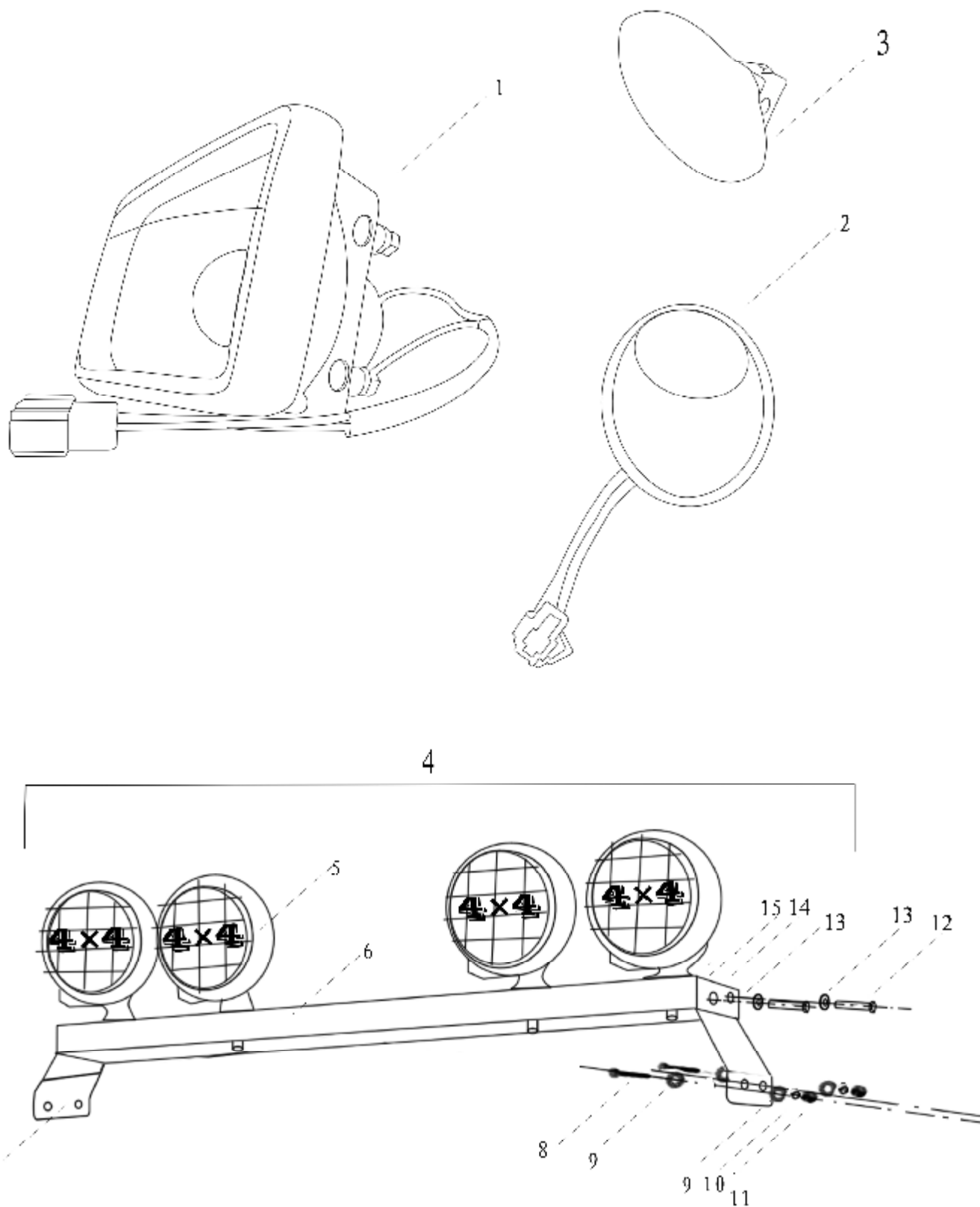


10-2 Combination switch, Loud speaker, Backup buzzer, Electronic flasher,

Auxiliary relay (组合开关、喇叭、倒车蜂鸣器、电子闪光器、辅助继电器)

Item No	Part No	Description	中文名称	Qty	Remark
1	JKD-201	turn signal	组合开关总成	1	
2	2024-3105007	Backup buzzer	倒车蜂鸣器	1	
3	6082-3014001A	horn	电喇叭	1	
4	SGD-154	Electronic flasher	电子闪光器	1	
5	PR0011/012	time-lapse relay	延迟继电器	1	

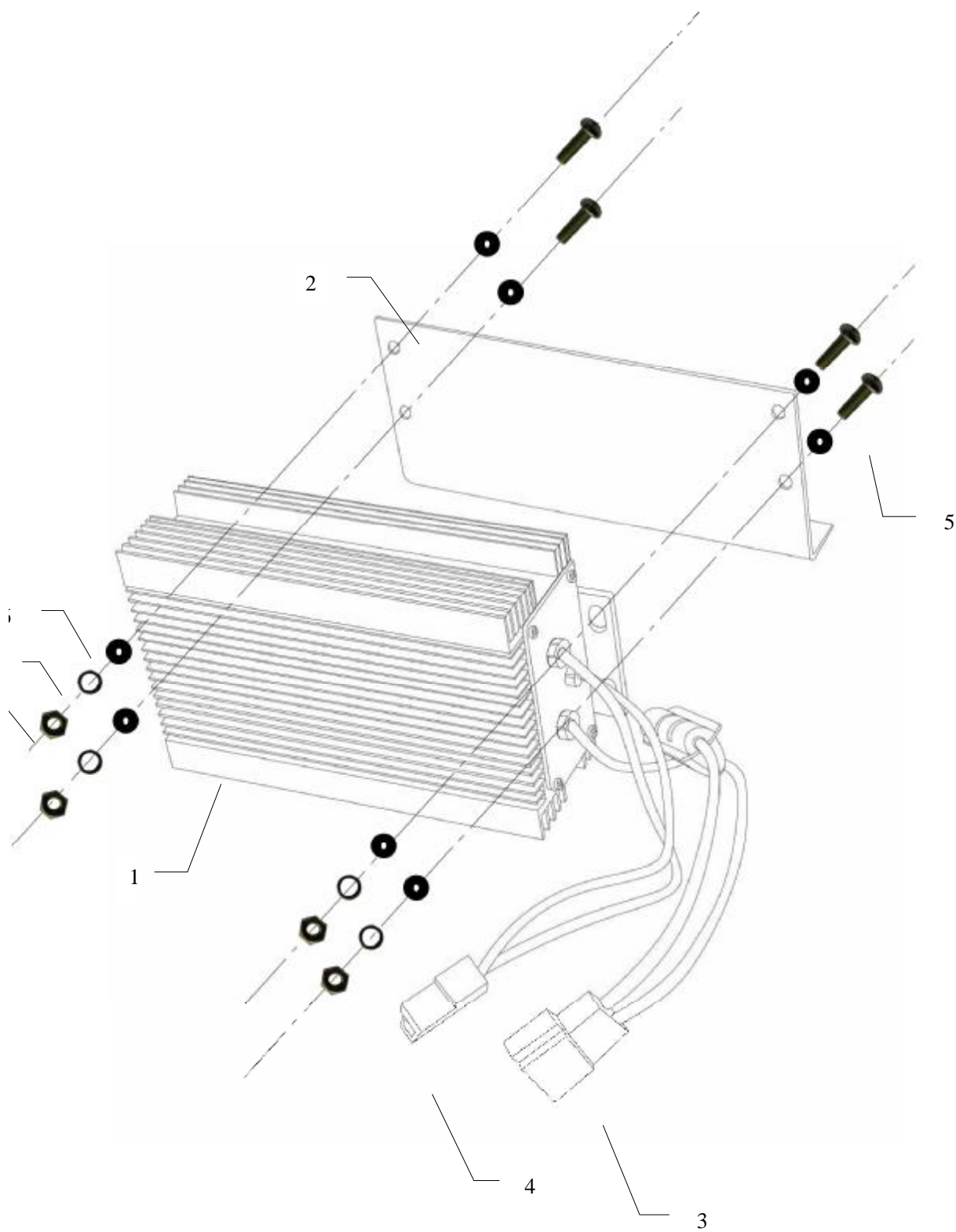
10-3 Lights (灯 具)



10-3 Lights (灯 具)

Item No	Part No	Description	中文名称	Qty	Remark
1	3040-3005010	Headlight	前大灯	2	
2	2024-3009001	taillight	后尾灯	2	
3	3040-3006010	Turn signal light	转向灯	2	
4	2020A-3029001	Search light assembly	探照灯总成	1	Includes bracket
5		Single Search light	探照灯	4	
6	2020A-3029012	Search light bracket 2	探照灯支架 2	1	
7	2020A-3029011	Search light bracket 1	探照灯支架 1	1	
8	Q150B0640-304H	Black nickel hexagon bolt M6*40	黑镍六角头螺栓 M6×40	4	
9	Q40206-304H	Black nickel larger spacer M6	黑镍加大平垫 M6	8	
10	Q40306-304H	Black nickel spacer M6	黑镍弹垫 M6	4	
11	Q394B06-304H	Black nickel nut M6	黑镍盖形螺母 M6	4	
12	Q150B0630-304H	Black nickel hexagon bolt M6*30	黑镍六角头螺栓 M6×30	4	
13	Q40206-304H	Black nickel larger spacer M6	黑镍加大平垫 M6	8	
14	Q40306-304H	Black nickel spring washer M6	黑镍弹垫 M6	4	
15	Q340B06	Hexagon nut M6	1 型六角螺母 M6	4	

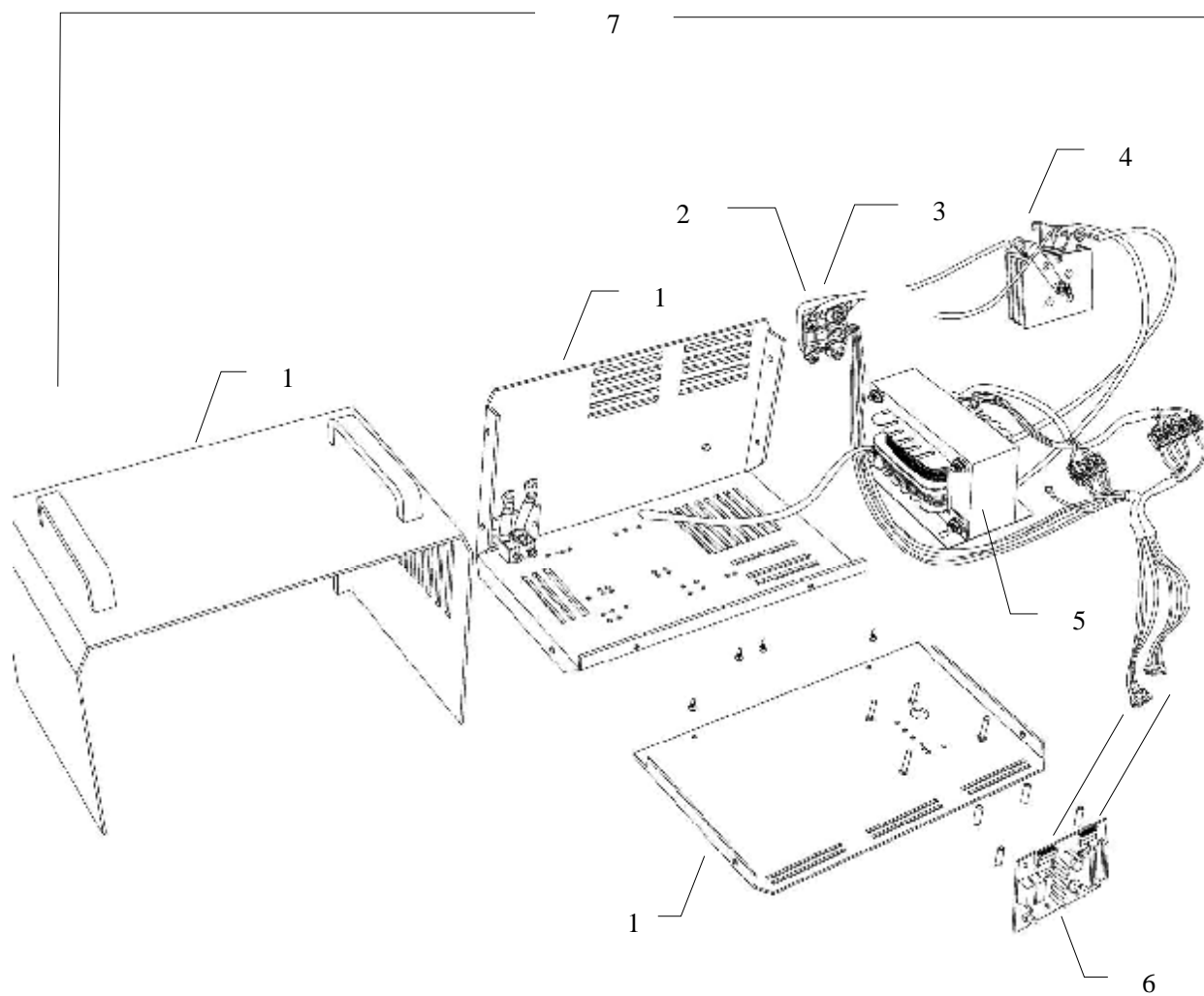
10-4 48V/12V DC converter (48V/12V DC 转换器)



10-4 48V/12V DC converter (48V/12V DC 转换器)

Item No	Part No	Description	中文名称	Qty	Remark
1	TDC-4812CA	DC converter	DC 转换器	1	
2	2024-3029009	DC converter bracket	DC 转换器支架	1	
3		To 48V out	接 48V 输入	1	
4		To 12V in	接 12V 输出	1	
5	Q174B0410-304H	Cross slot bolt M4×10	六角头头部带十字槽螺栓 M4×10	4	
6	Q40104-304H	Flat washer M4	平垫片 M4	8	
7	Q40304-304H	Gasket spring M4	弹垫 M4	4	
8	Q340B04-304H	Nut M4	1 型六角螺母 M4	4	

10-5 Charger (充电器)



10-5 Charger (充电器)

Item No	Part No	Description	中文名称	Qty	Remark
1	603172	Charger case	充电器箱体	1	
2	70423	Shunt	采样电阻	1	
3	3606	Output fuse	输出保险	1	
4	7458	Rectifier	整流器	1	
5	663511	Transformer	变压器	1	48V25A
6	ST-80100033	Circuit control board	电路控制板	1	
7	EG48V/25A-230A	Charger assembly	充电器总成	1	