



SPARE - PARTS CATALOGUE

CUSHMAN 1600 XD-R

KIOTI MECHRON 2210

LTEC XS 1000





PAGE *
MERGEFO
RMAT

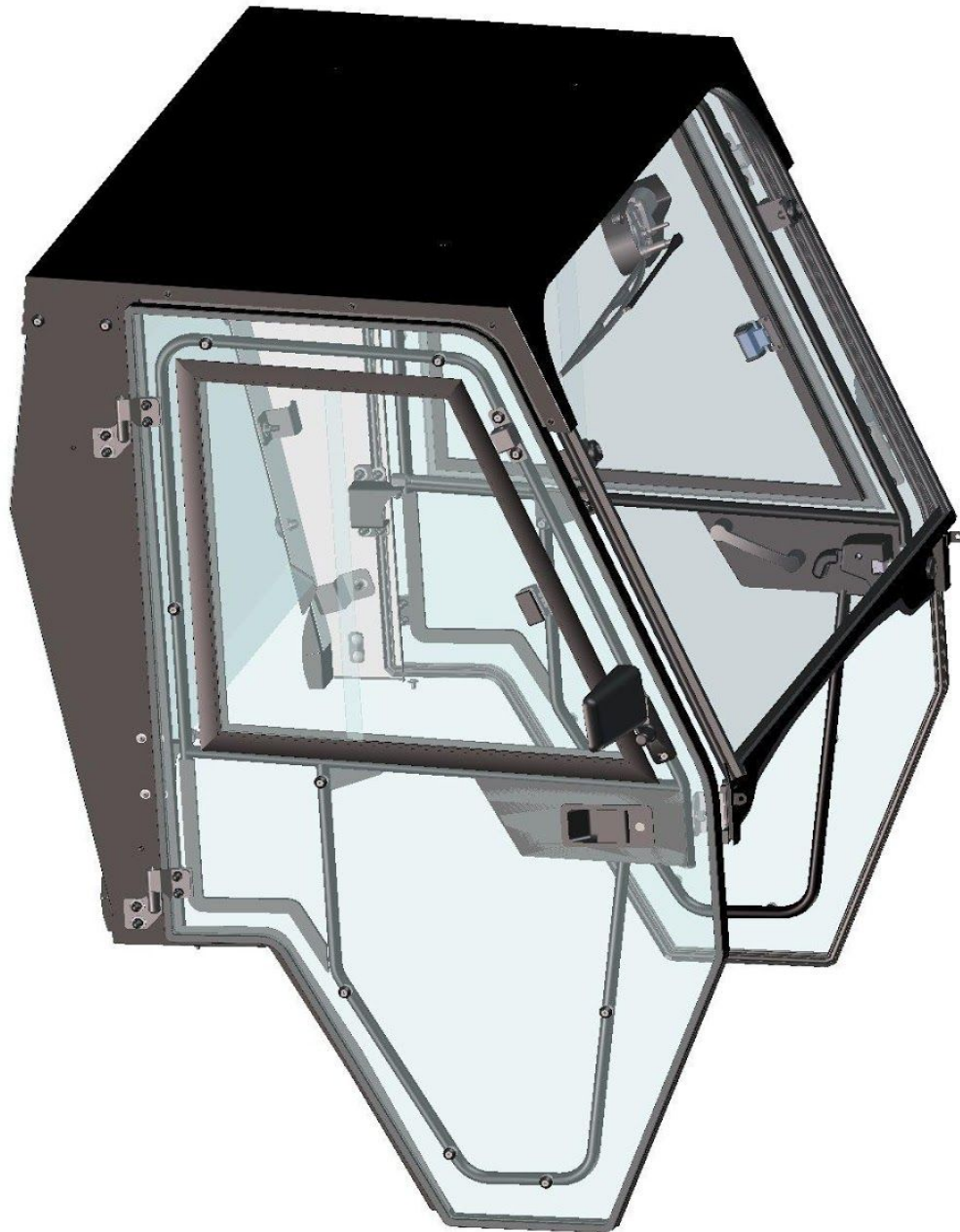
23

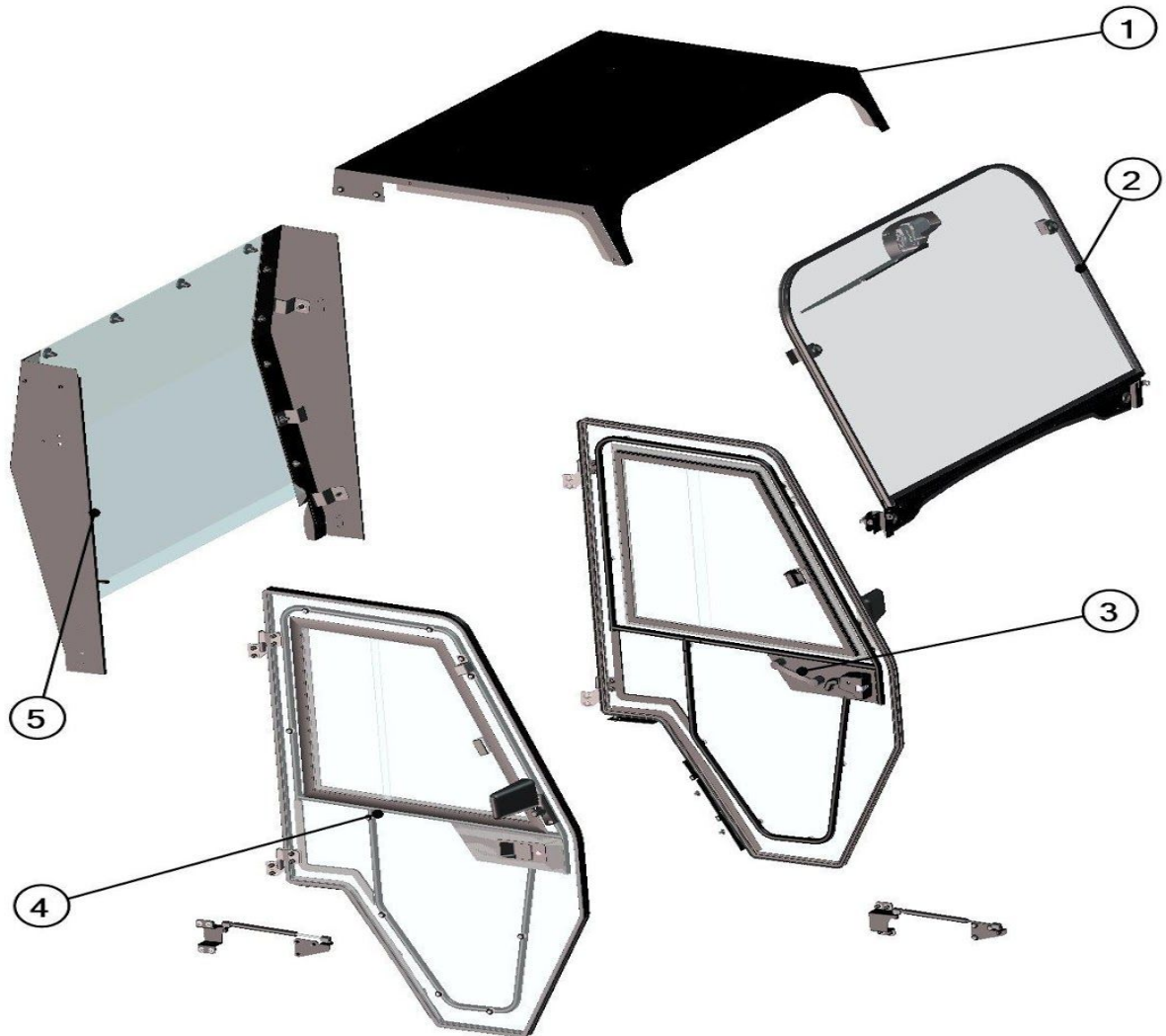
CUSHMAN, KIOTI, LTEC



1600 XD-R, 2210, XS 1000

PREVIEW CAB





Position	Catalogue no.	Description	Qty
1	37S02U01S30	ROOF	1
2	37S02U01S10	FRONT PANEL	1
3	37S02U01S40	LEFT DOOR	1
4	37S02U01S50	RIGHT DOOR	1
5	37S02U01S20	REAR PANEL	1

Position	Catalogue no.	Description	Qty
1	37S02U01S30	ROOF	1
2	37S02U01S10	FRONT PANEL	1
3	37S02U01S40	LEFT DOOR	1



CUSHMAN, KIOTI, LTEC



1600 XD-R, 2210, XS 1000

4	37S02U01S50	RIGHT DOOR	1
5	37S02U01S20	REAR PANEL	1

THE RIGHT DOOR IS SIMILAR WITH THE LEFT DOOR JUST USE CORRECT TABLE



PAGE *
MERGEFO
RMAT

23

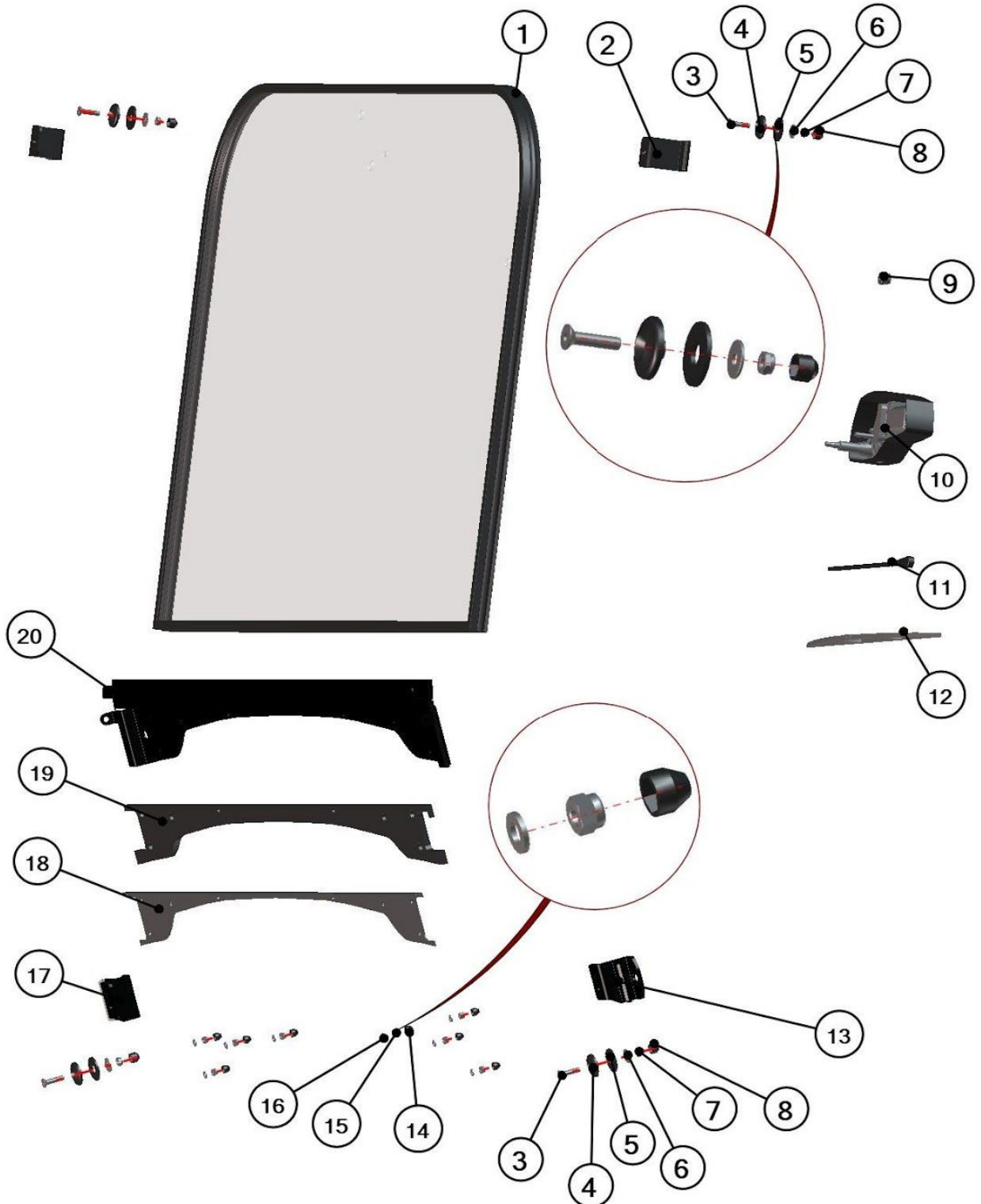
CUSHMAN, KIOTI, LTEC



1600 XD-R, 2210, XS 1000

FRONT PANEL





Position	Catalogue no.	Description	Qty
1	37S02U01-10M001	FRONT WINDOW ASSEMBLY	1
2	37S02U01-10-008	FRONT UPPER HOLDER	2
3	001760	SCREW M8x35	4
4	001429	PLASTIC WASHER 8	4
5	001428	RUBBER WASHER 8	4
6	003322	WASHER 8 LARGE	4
7	001388	SELF-LOCKING NUT M8	4
8	001309	PLASTIC NUT COVER OK13	4
9	00-01-005	BUSHING	1
10	002764	WIPER MOTOR	1
11	001764	WIPER ARM	1
12	001718	WIPER LATH	1
13	37S02U01-40W003	LEFT BOTTOM HOLDER	1
14	001348	PLASTIC NUT COVER OK10	8
15	001392	SELF-LOCKING NUT M6	8
16	001426	WASHER 6	8
17	37S02U01-50W003	RIGHT BOTTOM HOLDER	1
18	37S02U01-10-003	FRONT BOTTOM LEDGE	1
19	37S02U01-10-002	FRONT BOTTOM EPDM	1
20	37S02U01-10W001	FRONT BOTTOM LEDGE WELDED	1



PAGE *
MERGEFO
RMAT

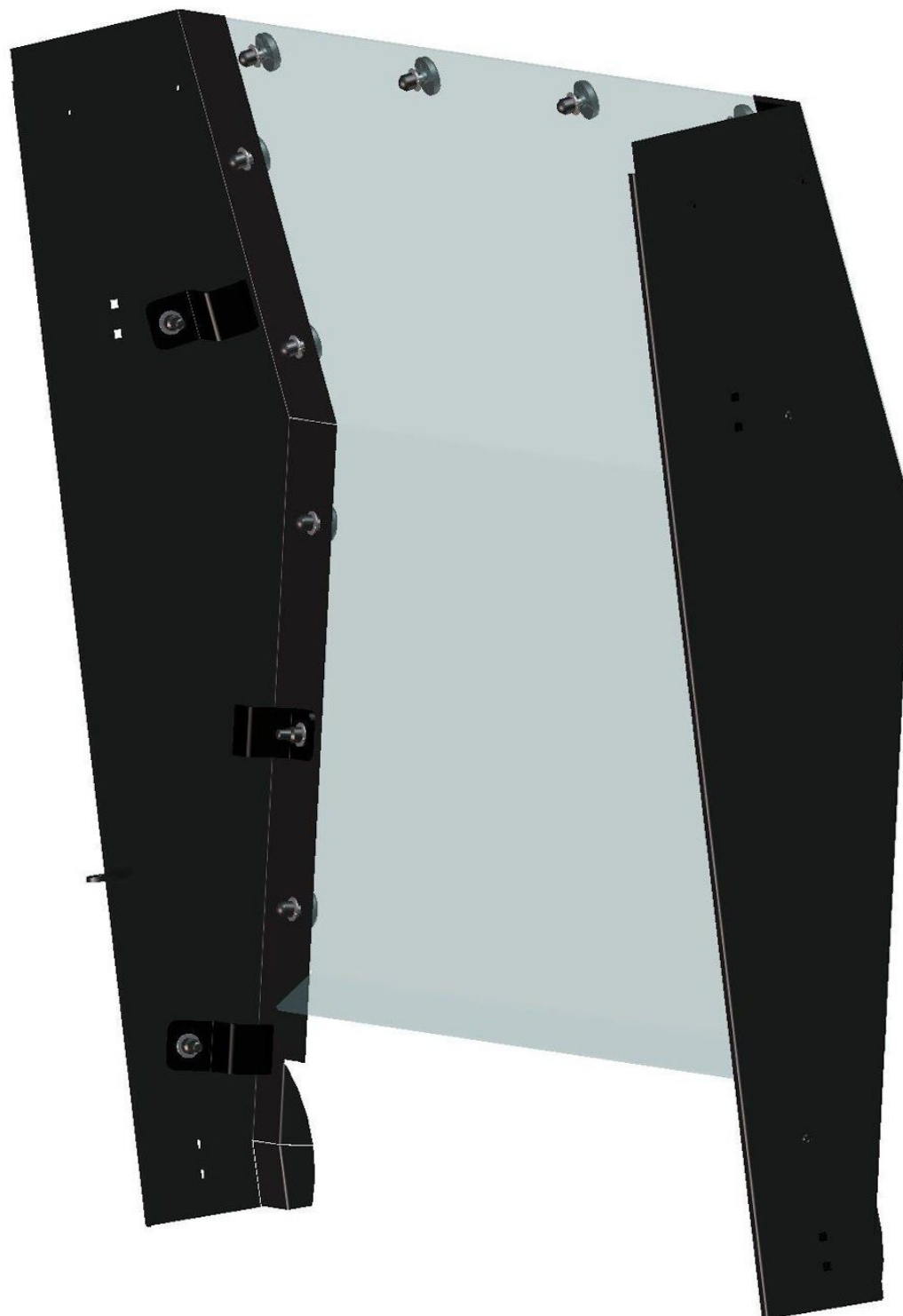
23

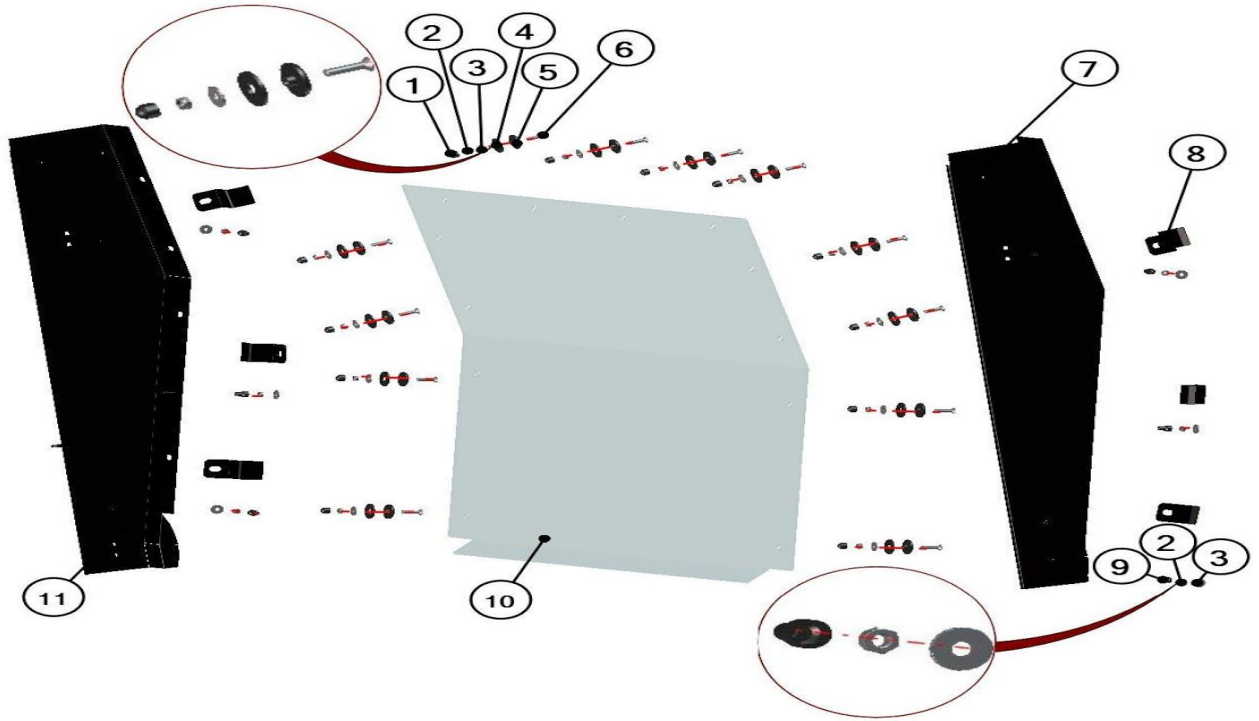
CUSHMAN, KIOTI, LTEC



1600 XD-R, 2210, XS 1000

REAR PANEL





Position	Catalogue no.	Description	Qty
1	001309	PLASTIC NUT COVER OK13	12
2	001388	SELF-LOCKING NUT M8	18
3	001407	WASHER STEEL	18
4	001428	RUBBER WASHER BLACK	12
5	001429	PLASTIC WASHER BLACK	12
6	001760	SCREW M8x35	12
7	37S02U01-20W001	LEFT DOOR BASE WELDED	1
8	37S02U01-30-014	DOOR BASE HOLDER	6
9	001308	PLASTIC NUT COVER OK13 LONG	6
10	37S02U01-20-003	REAR WINDOW POLYCARBONATE	1
11	37S02U01-20W002	RIGHT DOOR BASE WELDED	1

Position	Catalogue no.	Description	Qty
1	001309	PLASTIC NUT COVER OK13	12
2	001388	SELF-LOCKING NUT M8	18
3	001407	WASHER STEEL	18
4	001428	RUBBER WASHER BLACK	12
5	001429	PLASTIC WASHER BLACK	12
6	001760	SCREW M8x35	12
7	37S02U01-20W001	LEFT DOOR BASE WELDED	1
8	37S02U01-30-014	DOOR BASE HOLDER	6



CUSHMAN, KIOTI, LTEC



1600 XD-R, 2210, XS 1000

9	001308	PLASTIC NUT COVER OK13 LONG	6
10	37S02U01-20-003	REAR WINDOW POLYCARBONATE	1
11	37S02U01-20W00 2	RIGHT DOOR BASE WELDED	1



PAGE *
MERGEFO
RMAT

23

CUSHMAN, KIOTI, LTEC



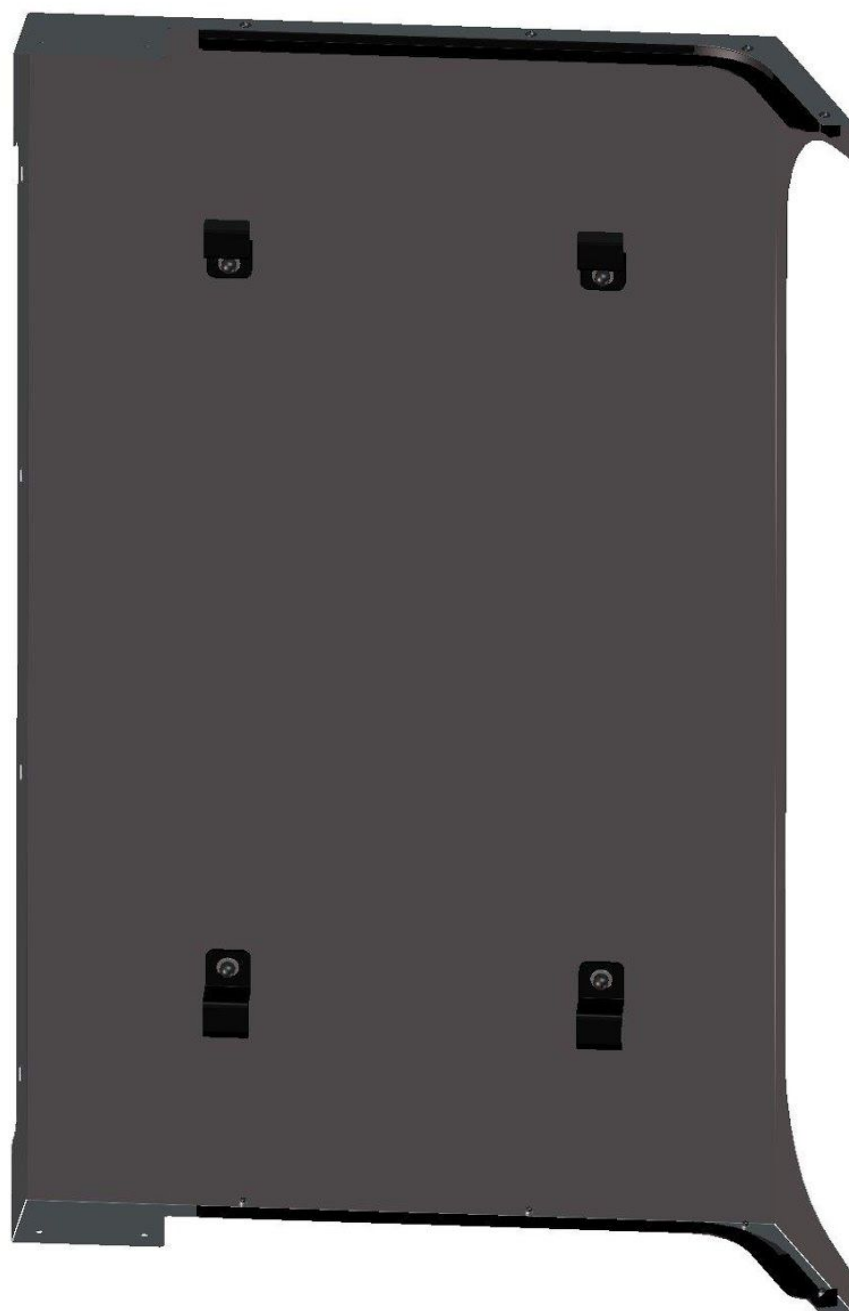
1600 XD-R, 2210, XS 1000

ROOF PANEL

CUSHMAN, KIOTI, LTEC



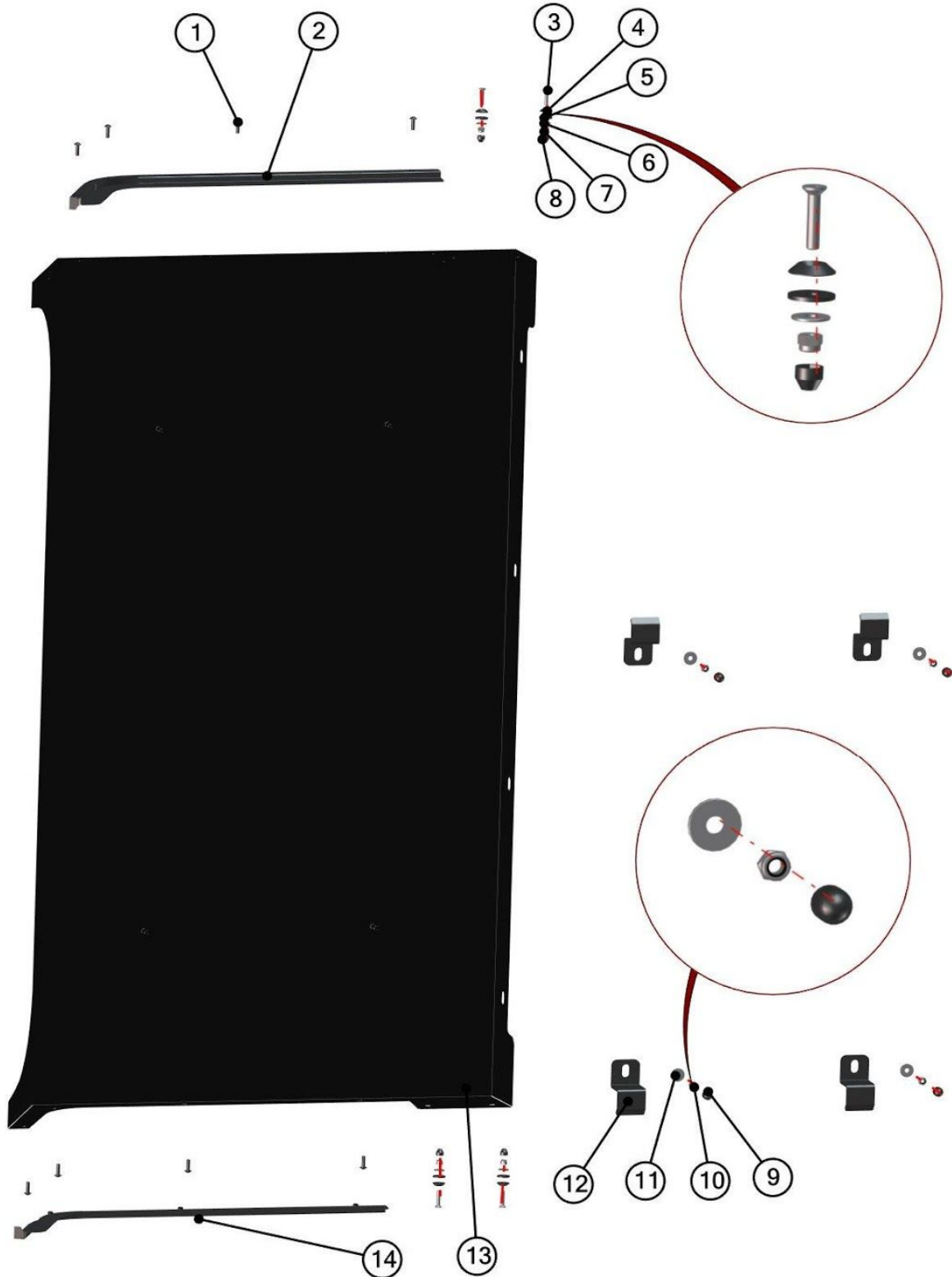
1600 XD-R, 2210, XS 1000



CUSHMAN, KIOTI, LTEC



1600 XD-R, 2210, XS 1000



Position	Catalogue no.	Description	Qty
1	002192	SCREW M6x20	8
2	37S02U01-30W001	LEFT ROOF LEDGE	1
3	001701	SCREW M6x30	4
4	001715	PLASTIC WASHER 6	4
5	001735	RUBBER WASHER 6	4
6	001337	WASHER 6 LARGE	4
7	001392	SELF-LOCKING NUT M6	4
8	001348	PLASTIC NUT COVER OK 10	4
9	001309	PLASTIC NUT COVER OK 13	4
10	001388	SELF-LOCKING NUT M8	4
11	001407	WASHER 8 LARGE	4
12	37S01U02-30-014	ROOF HOLDER	4
13	37S02U01-30W002	ROOF PANEL	1
14	37S02U01-30W003	RIGHT ROOF LEDGE	1



PAGE *
MERGEFO
RMAT
23

CUSHMAN, KIOTI, LTEC

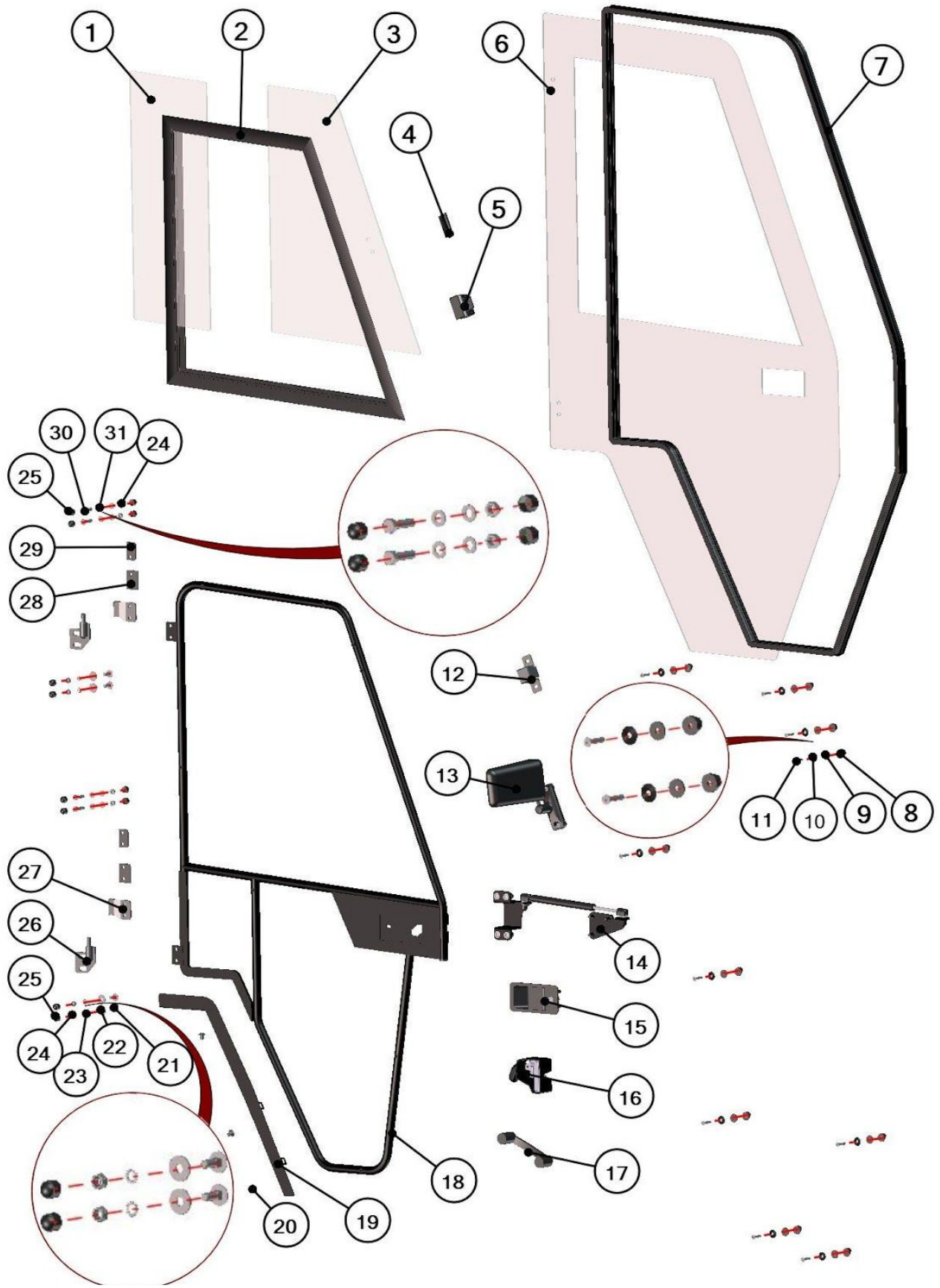


1600 XD-R, 2210, XS 1000

RIGHT DOOR

THE RIGHT DOOR IS SIMILAR WITH THE LEFT DOOR JUST USE CORRECT TABLE





RIGHT DOOR TABLE

Position	Catalogue no.	Description	Qty	Price
1	37S02U01-50-004	DOOR GLASS SOLID	1	N/A
2	37S02U01-50-020	RIGHT WINDOW FRAME	1	N/A
3	37S02U01-50-005	DOOR GLASS MOVABLE	1	€ 52
4	001762	GLASS STOP	1	€ 1
5	00-40M008	GLASS LOCK	1	€ 11
6	37S02U01-50-001	DOOR PANEL POLYCARBONATE	1	€ 275
7	002454^37S02U01S50	RUBBER PROFILE "SARAZIN"	1	€ 11/m
8	001736	SEAT WASHER 6	10	€ 0,3/pc
9	001735	RUBBER WASHER 6	10	€ 0,2/pc
10	001715	PLASTIC WASHER 6	10	€ 0,3/pc
11	001701	SCREW M6x30	10	€ 0,2/pc
12	37S02U01-50-014	RIGHT MIRROR HOLDER	1	€ 5
12a	37S02U01-50M004	RIGHT MIRROR HOLDER ASSY	1	€ 5
13	00-109U-M002	RIGHT MIRROR ASSEMBLY	1	€ 25
13a	002774	RIGHT MIRROR	1	€ 20
14	37S02U01-50PKM001	RIGHT GAS SPRING ASSEMBLY	1	€ 39
14a	000868	GAS SPRING	1	€ 28
15	000841	OUTER DOOR LOCK	1	€ 37
16	001744	RIGHT INNER DOOR LOCK	1	€ 60
16a	00-50M019	RIGHT INNER DOOR LOCK ASSEMBLY	1	€ 61
17	001703	DOOR HANDLE	1	€ 4
17a	00-40M018	DOOR HANDLE ASSEMBLY (inc.screws)	1	€ 5
18	37S02U01-50W001	RIGHT DOOR FRAME WELDED	1	N/A
19	37S02U01-50-009	RIGHT SEALING LEDGE	1	€ 15
20	002348	RUBBER RIVET	3	€ 0,2/pc
21	002575	SCREW M8x20	4	€ 0,2/pc
22	001407	WASHER STEEL 8 LARGE	4	€ 0,2/pc

23	001489	SERRATED LOCK WASHER 8	4	€ 0,2/pc
24	001388	SELF-LOCKING NUT M8	8	€ 0,2/pc
25	001309	PLASTIC NUT COVER OK13	12	€ 0,2/pc
26	37S02U01-50W004	RIGHT FRAME HINGE WELDED	2	€ 5/pc
27	37S02U01-50W002	RIGHT DOOR HINGE WELDED	2	€ 5/pc
28	37S02U01-50-024	POLY-HINGE WASHER	2	€ 1
29	37S02U01-50-023	HINGE WASHER	2	€ 1
30	001411	SCREW M8x30	4	€ 0,2/pc
31	001387	WASHER STEEL 8	8	€ 0,2/pc
	00-40M007	SCREWBOLT (PIN) OF DOORSTOP	1	€ 4

LEFT DOOR TABLE

Position	Catalogue no.	Description	Qty
1	37S02U01-50-004	DOOR GLASS SOLID	1
2	37S02U01-40-020	LEFT WINDOW FRAME	1
3	37S02U01-50-005	DOOR GLASS MOVABLE	1
4	001762	GLASS STOP	1
5	00-40M008	GLASS LOCK	1
6	37S02U01-50-001	DOOR PANEL POLYCARBONATE	1
7	002454^37S02U01S50	RUBBER PROFILE "SARAZIN"	1
8	001736	SEAT WASHER 6	10
9	001735	RUBBER WASHER 6	10
10	001715	PLASTIC WASHER 6	10
11	001701	SCREW M6x30	10
12	37S02U01-50-014	LEFT MIRROR HOLDER	1
12a	37S02U01-40M004	LEFT MIRROR HOLDER ASSY	1
13	00-109U-M001	LEFT MIRROR ASSEMBLY	1
13a	002773	LEFT MIRROR	1
14	37S02U01-40PKM001	LEFT GAS SPRING ASSEMBLY	1
14a	00868	GAS SPRING	1
15	000841	OUTER DOOR LOCK	1
16	001743	LEFT INNER DOOR LOCK	1
16a	00-40M019	LEFT INNER DOOR LOCK ASSY	1
17	001703	DOOR HANDLE	1
17a	00-40M018	DOOR HANDLE ASSEMBLY (inc.screws)	1
18	37S02U01-40W001	LEFT DOOR FRAME WELDED	1
19	37S02U01-40-009	LEFT SEALING LEDGE	1
20	002348	RUBBER RIVET	3
21	002575	SCREW M8x20	4
22	001407	WASHER STEEL 8 LARGE	4
23	001489	SERRATED LOCK WASHER 8	4
24	001388	SELF-LOCKING NUT M8	8
25	001309	PLASTIC NUT COVER OK13	12
26	37S02U01-40W004	LEFT FRAME HINGE WELDED	2
27	37S02U01-40W002	LEFT DOOR HINGE WELDED	2
28	37S02U01-50-024	POLY-HINGE WASHER	2
29	37S02U01-50-023	HINGE WASHER	2
30	001411	SCREW M8x30	4



CUSHMAN, KIOTI, LTEC



1600 XD-R, 2210, XS 1000

31	001387	WASHER STEEL 8	8
	00-40M007	SCREWBOLT (PIN) OF DOORSTOP	1



PAGE *
MERGEFO
RMAT

23

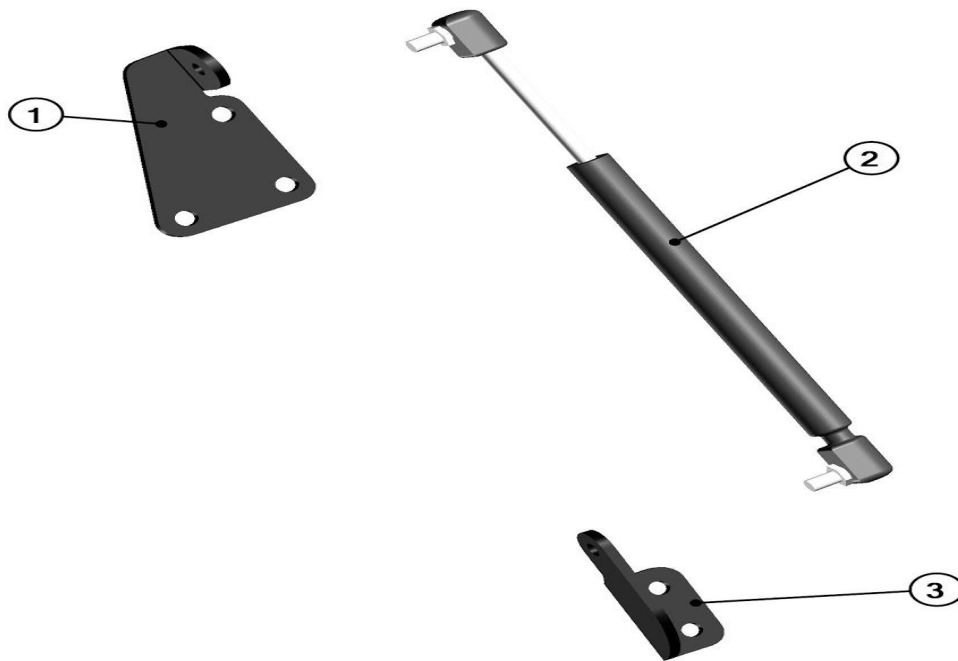
CUSHMAN, KIOTI, LTEC



1600 XD-R, 2210, XS 1000

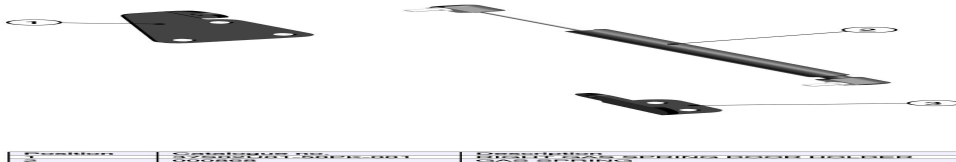
DOOR GAS SPRING





Position	Catalogue no.	Description	Qty
1	37S02U01-50PK-001	RIGHT GAS SPRING DOOR HOLDER	1
2	000868	GAS SPRING	1
3	37S02U01-50PK-002	RIGHT GAS SPRING BASE HOLDER	1

RIGHT TABEL

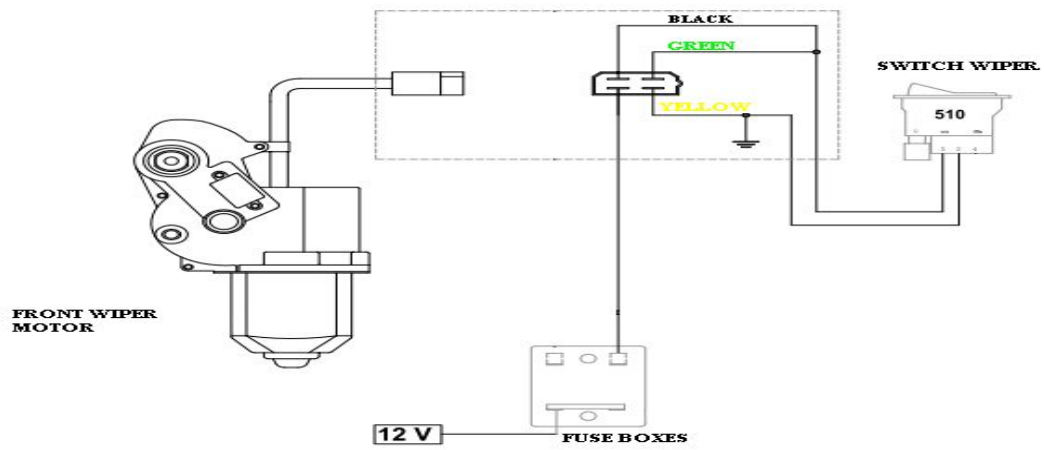


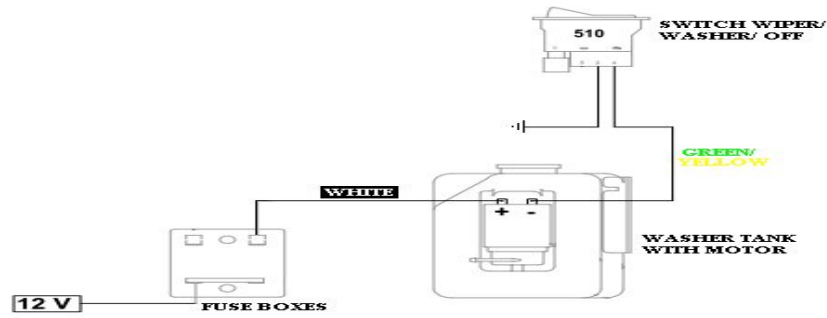
LEFT TABLE

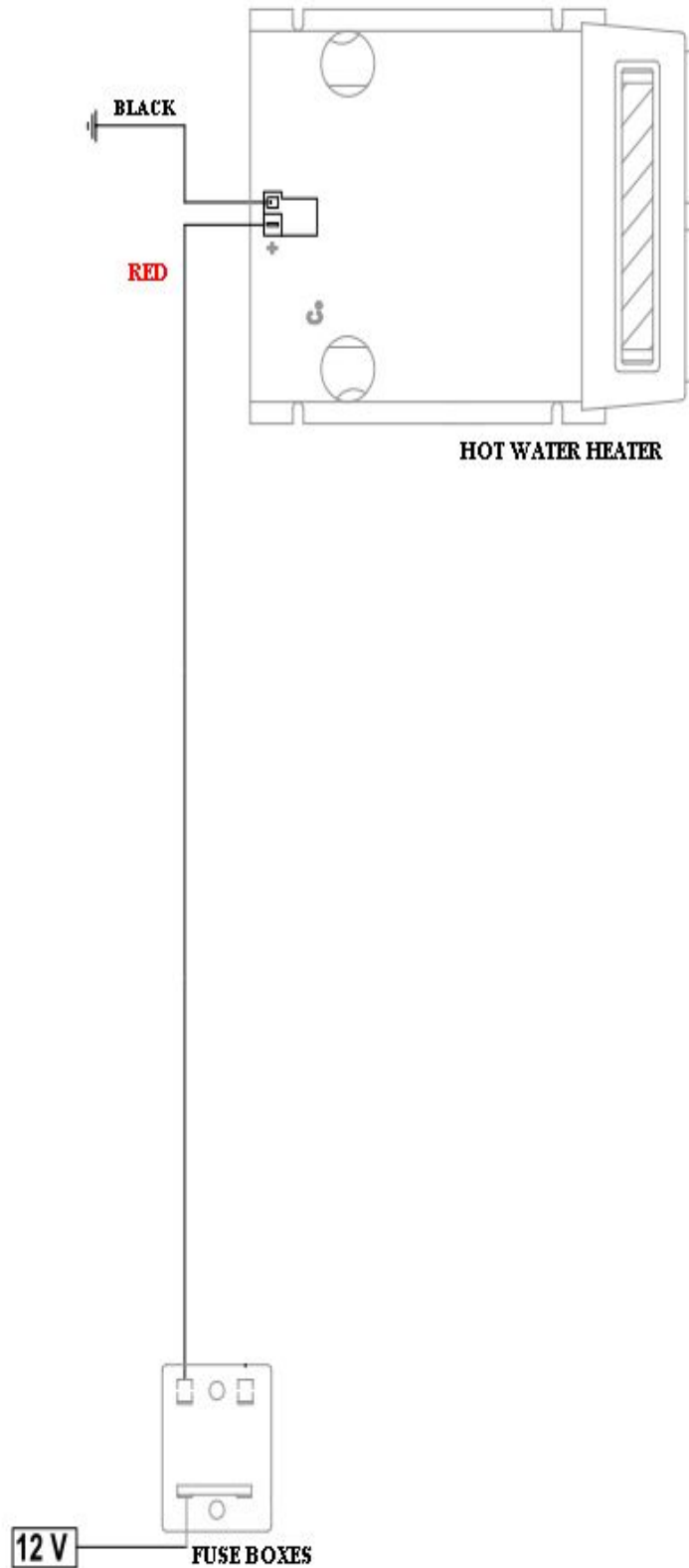


Position	Designation	Description	Qty
1	32502V01_40PK.001	RIGHT SPRING DOOR HOLDER	1
2	32502V01_40PK.002	LEFT SPRING DOOR HOLDER	1

ELECTROINSTALLATION









PAGE *
MERGEFO
RMAT
23

CUSHMAN, KIOTI, LTEC



1600 XD-R, 2210, XS 1000

Position	Catalogue no.	Description	Qti
1	002624	HEATER 12V	1
2	000968	SWITCH – WIPER/ WASHER/OFF	1
3	001576	WASHER MOTOR	1
4	002875	FUSE BOX 2x1	1
5	000885	WASHER COMPLETE	1
6	002764	WIPERMOTOR 12V	1
7	37S02U01-01M001	CABLE HARNESS - WIPER, WASHER	1
8	37S02U01-02M001	CABLE HARNESS - HEATING	1
9	00-01-001	WASHER HOLDER	1
10	37S02U01-02PKW001	HEATER HOLDER	1
11	37S02U01-02PKM003	AIR VENT HOLDER	2
12	001367	TIGHTENING STRAP	6
13	002386	EL. VALVE	1
14	002348	SCREW RIVETS	12
15	002491	AIR VALVE	1
16	002368+2487	TUBE ϕ 12/ ϕ 16	2
17	002635	HEATER VENT	4
18	002795	AIR HOSE PVC	1
19	002705	AL SELF GLUED STRAP	1
20	000896	HEATER HOSE 16MM	1
21	000893	HEATER HOSE 10MM	1

See next pages



Position : 1

Catalogue no.: 002624



Position : 2

Catalogue no.: 000968



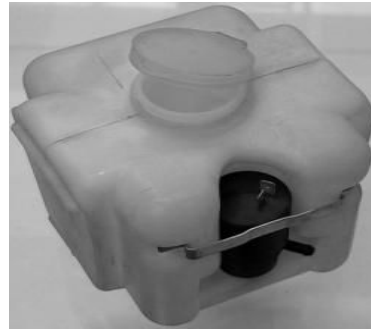
Position : 3

Catalogue no.: 001576



Position : 4

Catalogue no.: 001652



Position : 5

Catalogue no.: 000885



Position : 6

Catalogue no.: 002764



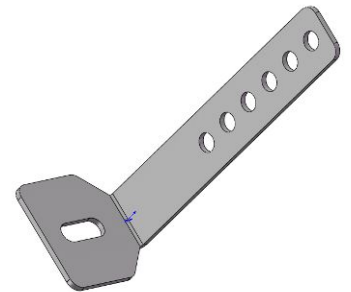
Position : 7

**Catalogue no.:
37S02U01-01M001**



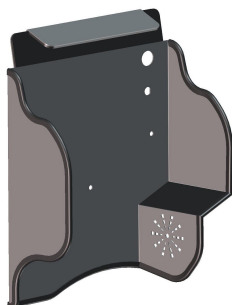
Position : 8



**Catalogue no.:
37S02U01-02M001**



Position : 9

Catalogue no.:00-01-001



Position : 10	Position : 11	Position : 12
Catalogue no.: 37S02U01-02PKW001	Catalogue no.: 37S02U01-02PK-003	Catalogue no.: 001367
		
Position : 13	Position : 14	Position : 15
Catalogue no.: 002386	Catalogue no.: 002348	Catalogue no.: 002491
		
Position : 16	Position : 17	Position : 18
Catalogue no.: 002368+2487	Catalogue no.: 002635	Catalogue no.: 002638



Position : 19

Catalogue no.: 002705



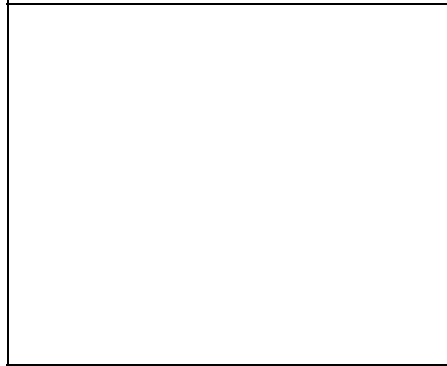
Position : 20

Catalogue no.: 000896



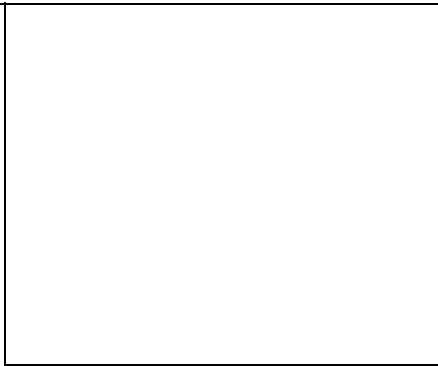
Position : 21

Catalogue no.: 000893



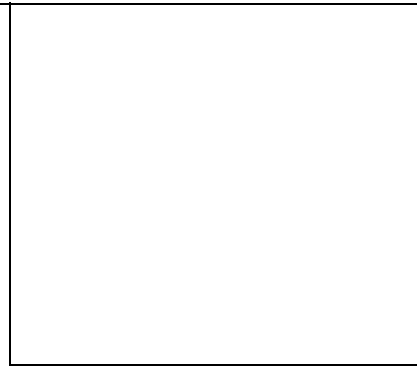
Position :

Catalogue no.:



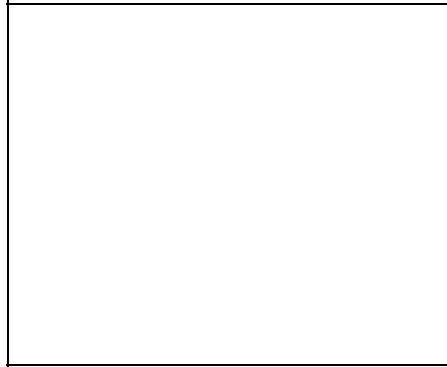
Position :

Catalogue no.:



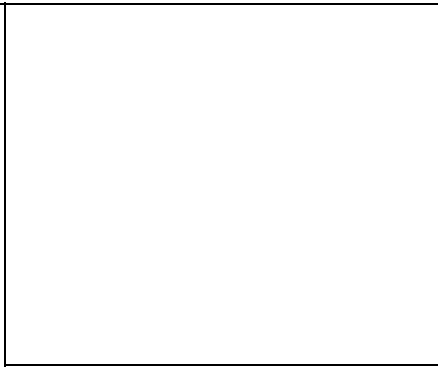
Position :

Catalogue no.:



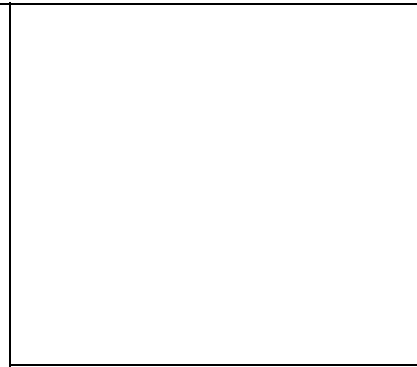
Position :

Catalogue no.:



Position :

Catalogue no.:



Position :

Catalogue no.: