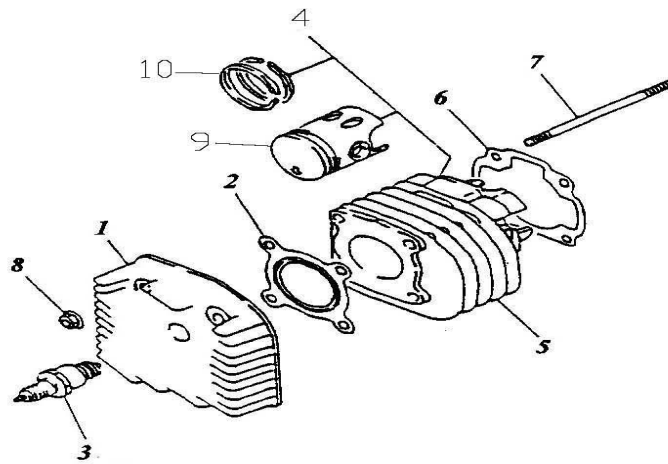


Tegning	Reservevedelsnummer	Antal	Varebeskrivelse	Mål	Udsalgspris DKK
Reservevedelskatalog Adly 100					
				2019	
				ATV-100 Rødkilde	
					
					
Oversigt					
產品編號 : 221 ATV-100RV					
項次 ITEM					
NO.					
117-E01		CYLINDER HEAD COVER			
117-E02		CRANKSHAFT,PISTON			
149-E03		FAN,AIR SHROUD			
149-E04		OIL PUMP			
117-E05		REED VALVE,AIR CLEANER			
149-E06		CARBURETOR			
116-E07		GENERATOR,STARTING MOTOR			
203-E08		CRANKCASE			
149-E09		STARTER			
203-E10		CLUTCH			
203-E11		TRANSMISSION			

Tegning	Reservepartsnummer	Antal	Varebeskrivelse	Mål	Udsalgspris DKK
	145-F01		AIR CLEANER		
	218-F02		EU2 EXHAUST		
	219-F03		FRAME BODY		
	181-F04		ARM,FLOOR PANEL,BUMPE		
	219-F05		BODY COVER,SEAT		
	201-F06		FUEL TANK,OIL TANK		
	146-F07Q-1		FRONT WHEEL,SUSPENSION 19*7-8 K290		
	146-F08A-2		REAR WHEEL 18*9,5-8 K290		
	145-F09A		FRONT BRAKE		
	201-F10		REAR BRAKE		
	216-F11I-1		HANDLE BAR		
	201-F12		REAR WHEEL AXLE,CHAIN		
	155-F13		STEERING		
	221-F14		ELECTRICAL PARTS		
	145-F15		TAIL LIG		
	186-A01		STICKER		
	181-C01		ACCESSORY		

117-E01A CYLINDER,CYLINDER HEAD

116-E01A CYLINDER, CYLINDER HEAD<EU2>



組件編號:117-E01A

汽缸,汽缸蓋(92/61)CYLINDER,CYLINDER HEAD

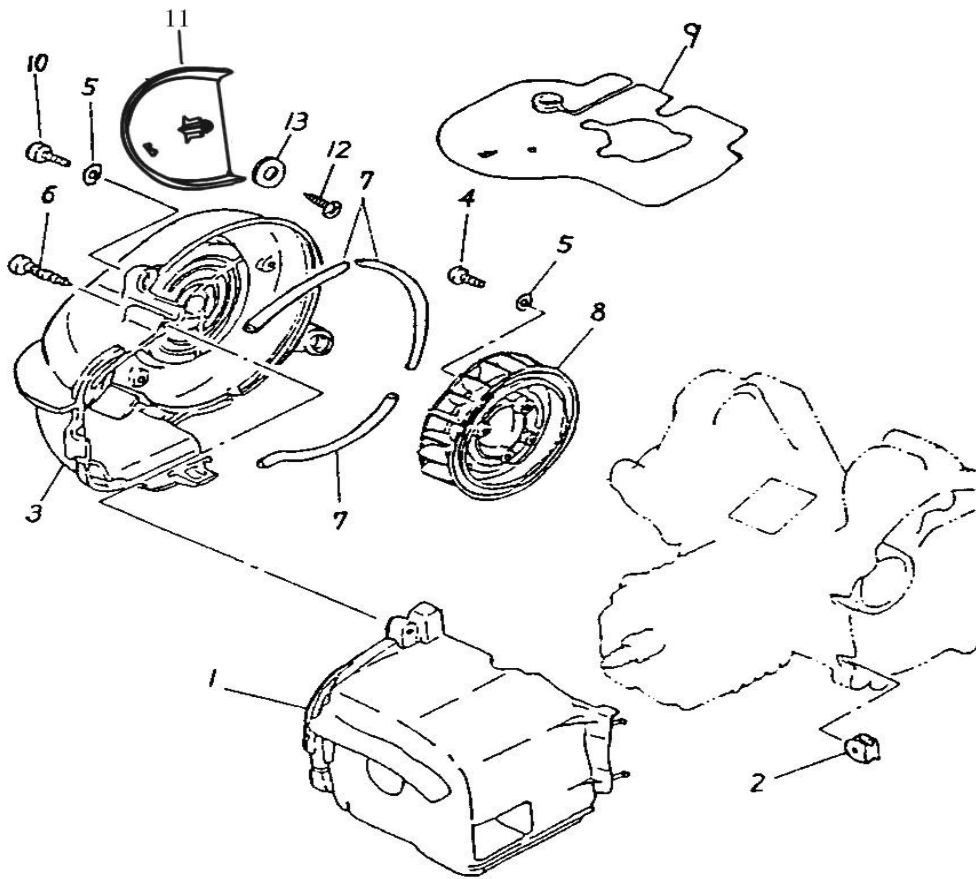
Item	No./Parts No./Un	it Q'	tyl	Parts Name
------	------------------	-------	-----	------------

Tegning	Reserve­dels­nummer	Antal	Vare­beskrivelse	Mål	Udsalgs­pris DKK
項次	部 品 番 號	用 量		零 件 名 稱	
====	=====	====	=====	=====	
1	12201-117-000	1	CYLINDER HEAD	52.5	231,00
2	12251-117-001	1	CYLINDER HEAD GASKET		26,95
3	12301-117-00A	1	CYLINDER COMP		1.270,50
4	98076-101-00A	1	SPARK PLUG	抗電阻	69,30
5	12101-117-000	1	CYLINDER	無分級 #52	866,25
6	12191-117-001	1	CYLINDER GASKET	57	13,48
7	91001-07128C	4	STUD BOUT(YELLOW ZINC)	7*128	19,25
8	94050-07000C	4	HEX FLANGE NUT (YELLOW ZINC)	7MM	3,08
9	13100-117-0A0	1	PISTON	標準 52	211,75
10	13011-117-0BA	1	PISTON RING SET	52*1.2*2.05	146,30
====	=====	====	=====	=====	
117-E02 CRANKSHAFT,PISTON					
組件	編號 : 117-E02		曲軸,活塞 CRANKSHAFT,PISTON		
----	-----	----	-----	-----	
Item	No. Parts No. Un	it Q'	tyl Parts Name		
項次	部 品 番 號	用 量		零 件 名 稱	
====	=====	====	=====	=====	
1	13000-117-000	1	CRANKSHAFT ASSY		943,25
2	13321-117-000	1	LEFT CRANK		346,50
3	13381-117-000	1	CRANK PIN		69,30
4	96200-182412	1	NEEDLE BEARING	18*24*12	107,80
5	13201-117-000	1	CRANK CONNECTING ROD		211,75

Tegning	Reservevedelsnummer	Antal	Varebeskrivelse	Mål	Udsalgspris DKK
6	13311-117-000	1	RIGHT CRANK		346,50
7	90471-104-000	1	SEMICYCLE KEY	3*13	9,63
8	96100-62040	2	RADIAL BALL BEARING	6204C3	96,25
9	96500-20428	1	OIL SEAL	20*42/43*8/9	19,25
10	96500-20306	1	OIL SEAL	20*30/33*6	19,25
11	13316-117-000	1	LEFT CRANK COLLAR	16*21*12	19,25
12	94101-1830010	2	PLAIN WASHER	18*30*1	19,25
13	13111-117-000	1	PISTON PIN	9*12*40	38,50
14	94101-1624010A	1	PLAIN WASHER	16.2*24*1.	3,85
15	13115-101-000	2	CLIP PISTON PIN	1.0*14	3,08
16	96200-121516	1	NEEDLE BEARING	12*15*16.6	107,80

=====
 149-E03 FAN,AIR SHROUD

FAN, AIR SHROUD



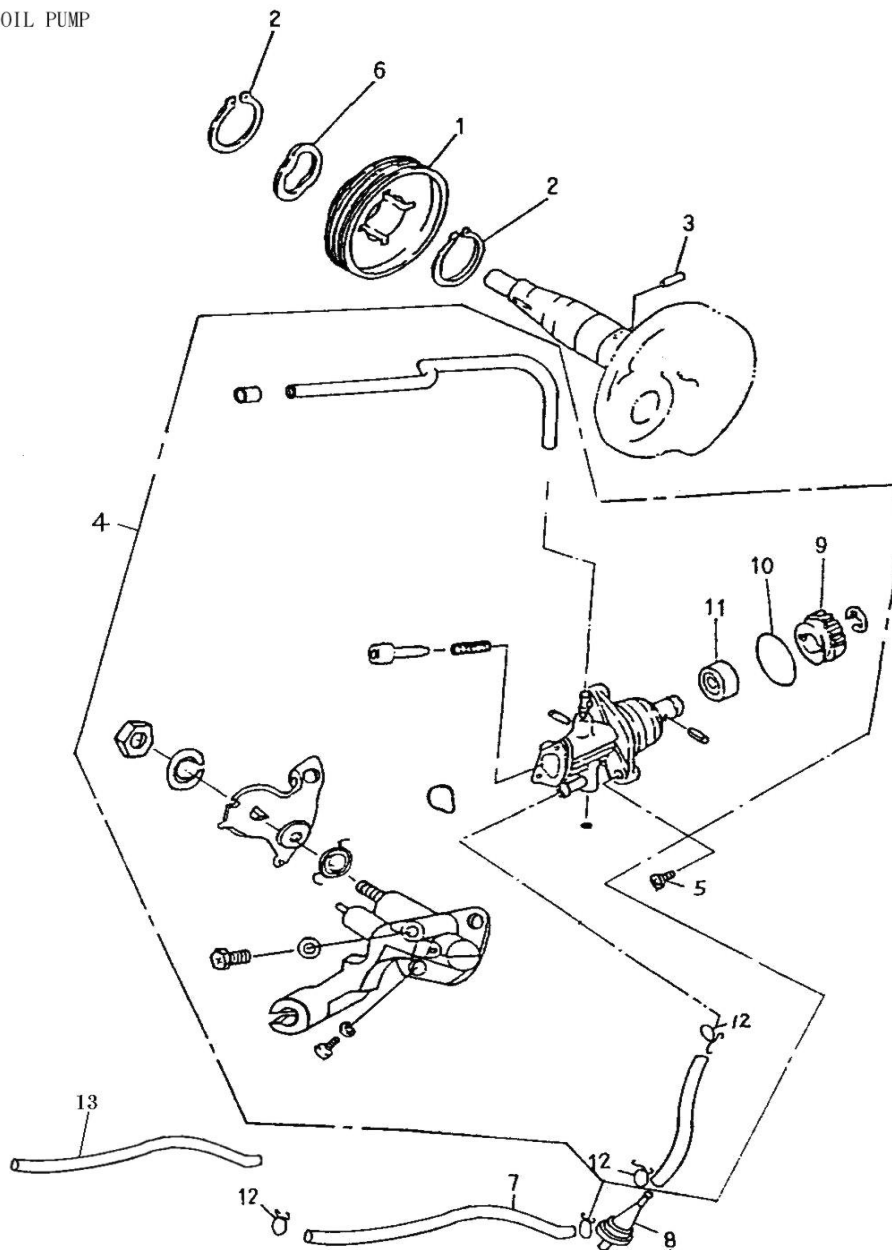
組件編號:149-E03D 風扇,汽缸護罩(化油器護罩)無字FAN,AIR SHROUD

Item	No.IParts No.IUnit	Q'	tyl	Parts Name	
項次	部品番號	用量			零件名稱
1	19620-117-00A	1		CYLINDER AIR SHROUD	44,28
2	83552-116-000	2		GROMMET	7,70
3	19610-116-000	1		GENERATOR COVER	無孔 77,00

Tegning	Reservevedelsnummer	Antal	Varebeskrivelse	Mål	Udsalgspris DKK
4	91000-06016K	4	HEX SOCKET BOLT(BLACK ZINC)	6*16	4,24
5	94101-0613010B	6	PLAIN WASHER(WHITE ZINC)	6*13*1	0,77
6	93903-06040K	1	PAN HEAD TAPPING SCREW(BLACK ZINC)	6*40	4,62
7	17632-116-000	2	DAMPER		13,48
8	19510-116-000	1	FAN		65,45
9	55122-116-000	1	DEFLECTOR		26,95
10	91000-06020B	2	HEX SOCKET BOLT(WHITE ZINC)	6*20	7,70
11	19612-145-00A	1	GENERATOR OUTER COVER		51,98
12	93903-05016K	1	PAN HEAD TAPPING SCREW (BLACK ZINC)	5*16	3,85
13	94101-0619010B	1	PLAIN WASHER(WHITE ZINC)	6*19*1	1,54

149-E04 OIL PUMP

OIL PUMP



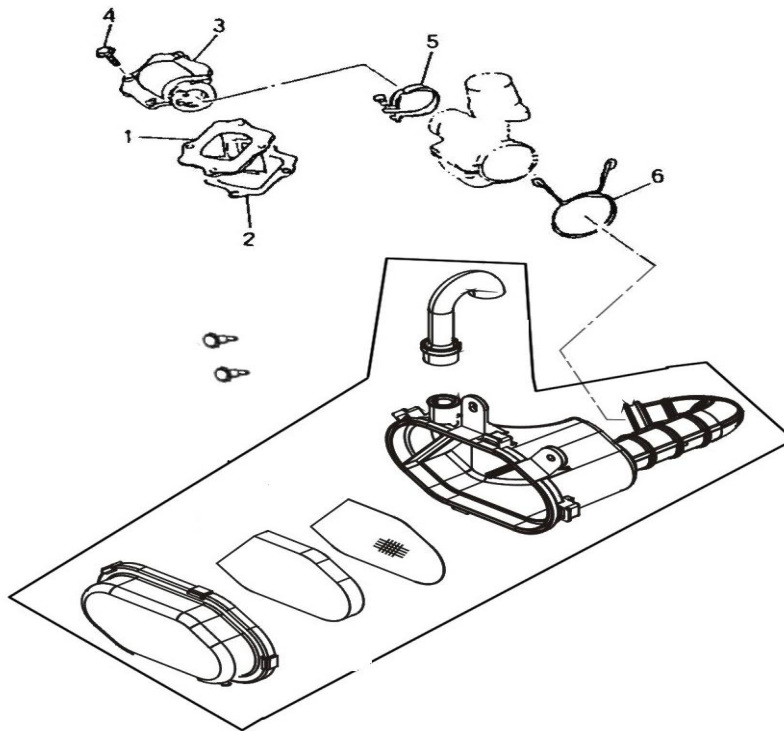
組件 編號：149-E04 潤滑油泵 OIL PUMP

Item No./Parts No./Unit Q' tyl Parts Name

Tegning	Reserveodelsnummer	Antal	Varebeskrivelse	Mål	Udsalgspris DKK
項次	部品番號	用量		零件名稱	
====	=====	====	=====	=====	
1	15150-104-000	1	PUMP DRIVE GEAR		38,50
2	94511-1900S	2	EXTERNAL CIR CLIP	STW-19	7,70
3	96300-030118	1	CRANK SHAFT PIN	3*11.8	3,85
4	15100-117-000	1	OIL PUMP ASSY		577,50
5	93500-05016K	2	PAN PHILLIPS BOLT(BLACK ZINC)	M5*16	13,48
6	15151-104-000	1	WAVE WASHER	19.2*26*0.3	5,01
7	94400-0408465	1	TUBE	4.8*8*465	26,95
8	17502-101-000	1	OIL FILTER CUP		23,10
9	15136-110-000	1	OIL PUMP WORMWHEEL	40T	61,60
10	91319-110-000	1	OIL RING	19.3*1.6	38,50
11	96500-09164	1	OIL SEAL	9.5*16*4	19,25
12	94510-08000	4	CLIP	8*0.8	3,85
13	94402-1012400	1	TUBE COVER	10*12*400	26,95
====	=====	====	=====	=====	

116-E05 REED VALVE

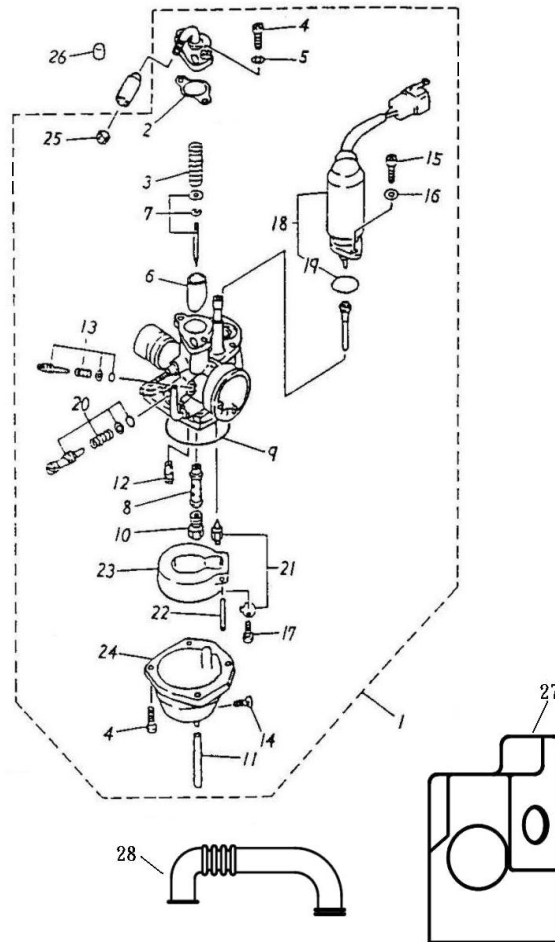
REED VALVE ,AIR CLEANER



Tegning	Reserve delnummer	Antal	Varebeskrivelse	Mål	Udsalgspris DKK
組件 ----	編號 : 117-E05 -----	----	逆止閥 REED VALVE -----	-----	
Item 項次	No. Parts No. Un 部 品 番 號	it Q' 用 量	tyl Parts Name		零 件 名 稱
====	=====	=====	=====	=====	=====
1	14100-117-000	1	REED VALVE ASSY		161,70
2	17111-116-001	1	REED VALVE GASKET	非石棉	15,40
3	17100-116-000	1	INTAKE MANIFOLD(3XG)		84,70
4	96000-06018-08C	4	HEX WASHER FACE BOLT(YELLOW ZINC)	6*18	5,78
5	14110-104-000	1	INTAKE MANIFOLD HOSE CLAMP	8mm 1.25 \$ 36	20,02
6	94510-40000	1	CLIP	40*2.3	5,78
====	=====	=====	=====	=====	=====

149-F06C CARBURETOR

CARBURETOR



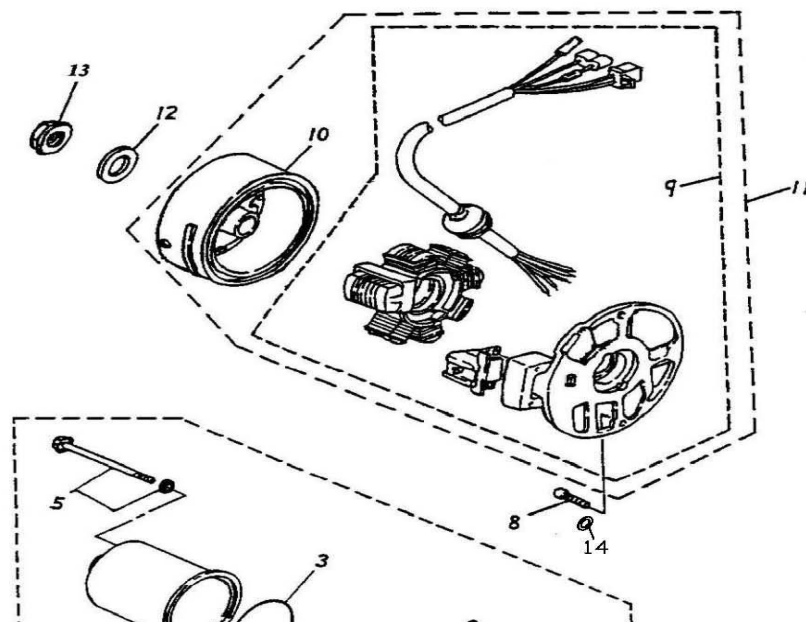
組件編號:149-E06C

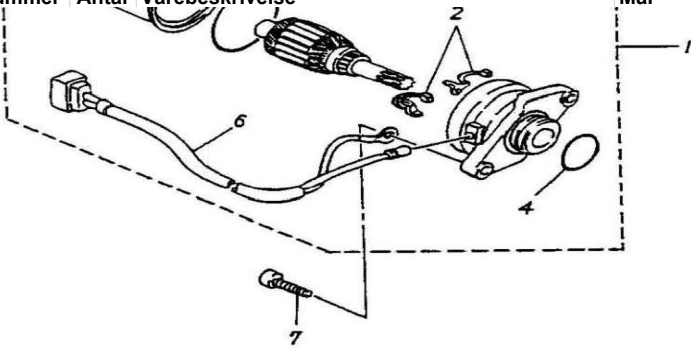
化油器(化油器護套)CARBURETOR

Tegning	Reservevedelsnummer	Antal	Varebeskrivelse	Mål	Udsalgspris DKK
Item	No./Parts No./Unit	Q	'tyl Parts Name		
項次	部品番號	用量		零件名稱	
====	=====	====	=====	=====	
1	16100-117-0AA	1	CARBURETOR ASSY	副噴17.5主#77.5	1.347,50
2	16101-116-000	1	CARBURETOR GASKET		19,25
3	16102-116-000	1	THROTTLE VALVE SPRING		19,25
4	93500-04014	6	PAN PHILLIPS BOLT	4*14	3,08
5	94111-0407010	2	SPRING WASHER	4*7*1	1,16
6	16103-116-000	1	THROTTLE VALVE		115,50
7	16104-117-000	1	NEEDLE SET	3CR4-3	73,15
8	16105-117-000	1	NEEDLE NOZZLE	681 E-3	69,30
9	16106-116-000	1	FLOAT CHAMBER SEAL		57,75
10	16108-117-000	1	MAIN NOZZLE	#77.5	57,75
11	16109-116-000	1	OVER FLOW TUBE	4*7	7,70
12	16110-116-000	1	PILOT JET	#17.5	69,30
13	16115-116-000	1	AIR ADJUST SCREW SET		30,80
14	16111-116-000	1	DRAIN PLUG		11,55
15	93500-04008C	2	PAN PHILLIPS BOLT	4*8	7,70
16	94111-0406510	2	SPRING WASHER	4*6,5*1	19,25
17	93500-03008	1	PAN PHILLIPS BOLT	3*8	11,55
18	16117-116-00A	1	NEEDLE VALVE ASSY	E-0	154,00
19	91314-116-000	1	OIL RING	14*1.5	19,25
20	16114-116-000	1	THROTTLE SCREW SET		30,80
21	17215-116-000	1	PLUNGER STARTER		770,00
22	16119-116-000	1	FLOAT PIN		9,63
23	16118-116-0A0	1	FLOAT- BLACK		115,50
24	16107-116-000	1	FLOAT CHAMBER		192,50
25	16113-116-000	1	CABLE ADJUST NUT		3,85
26	42615-145-001	1	PURGE HOLE PLUG	ECO	11,55
27	11211-145-000	1	TUBE BREATHER		38,50
28	16140-116-000	1	CARBURETOR SHROUD		88,55
====	=====	====	=====	=====	

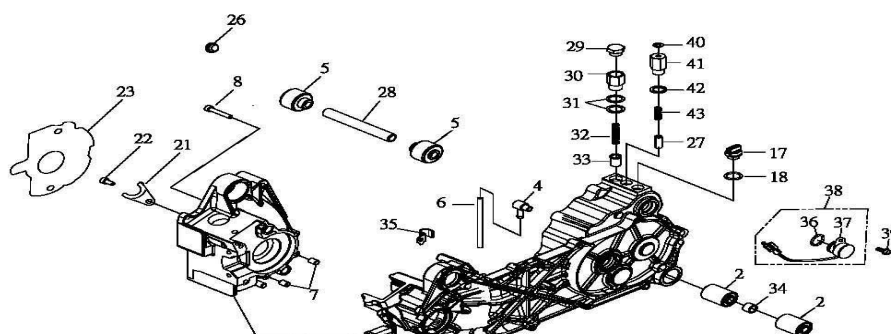
116-E07 GENERATOR, STARTING MOTOR


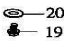
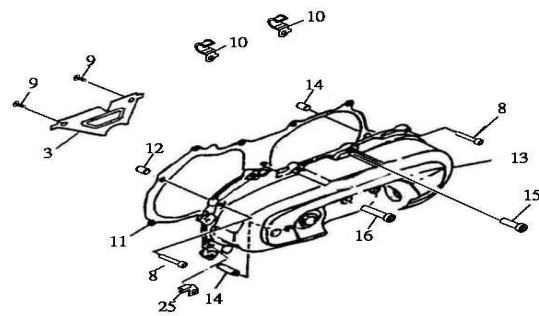
GENERATOR, STARTING MOTOR



Tegning	Reservevedelsnummer	Antal	Varebeskrivelse	Mål	Udsalgspris DKK
					
組件	編號 : 116-E07		發電機,起動馬達 GENERATOR,STARTING MOTOR		
Item	No./Parts No./Un	it Q	tyl Parts Name		
項次	部品番號	用量		零件名稱	
=====	=====	=====	=====	=====	
1	31200-116-000	1	STARTING MOTOR ASSY		1.001,00
2	31201-116-000	1	BRUSH SET		96,25
3	91342-104-000	1	OIL RING	42*1.5	15,40
4	91323-104-000	1	OIL RING	23*2	19,25
5	90115-116-000	2	BOLT SET		19,25
6	31202-116-000	1	CORD COMP.		161,70
7	91000-06020B	2	HEX SOCKET BOLT(WHITE ZINC)	6*20	7,70
8	91000-06016K	2	HEX SOCKET BOLT(BLACK ZINC)	6*16	4,24
9	31120-116-000	1	STATOR COMP.		847,00
10	31110-116-000	1	GENERATOR FLYWHEEL		558,25
11	31100-116-000	1	GENERATOR ASSY		1.232,00
12	94101-1022015B	1	PLAIN WASHER(WHITE ZINC)	10*22*1.5	3,08
13	94050-10000G	1	HEX FLANGE NUT (GREEN ZINC)	M10	5,78
14	94101-0613010B	2	PLAIN WASHER(WHITE ZINC)	6*13*1	0,77
=====	=====	=====	=====	=====	
203-E08C CRANKCASE					

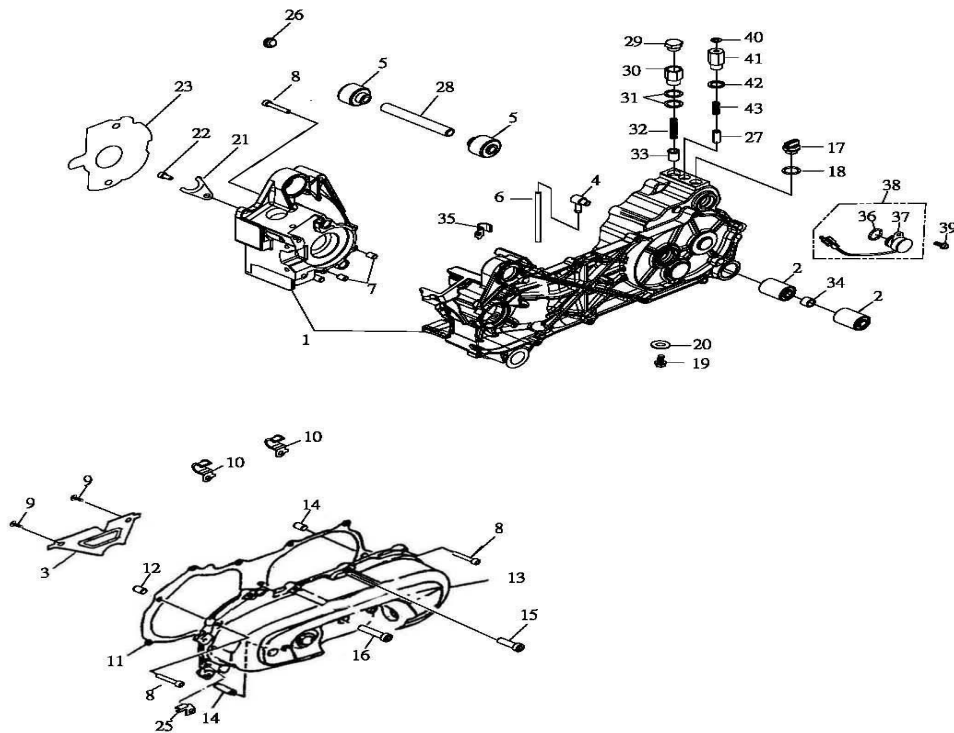
203-E08A CRANKCASE



Tegning	Reserveodelsnummer	Antal	Varebeskrivelse	Mål	Udsalgspris DKK
			1 		
					
組件編號:203-E08 C			曲軸箱(EU2)無ADLYCRANKCASE		
Item	No./Parts No./Unit	Q	'tyl Parts Name		
項次	部品番號	用量		零件名稱	
1	11100-203-000	1	LEFT/RIGHT CRANKCASE		2.194,50
2	96400-102840	2	BUSH	10.2*28.1*36/40	53,90
3	11342-116-000	1	PLATE L COVER		38,50
4	16610-104-00A	1	BREATHER HOSE HEAD		46,20
5	11203-145-000	2	BUSH(REV.1)	10.2*35*23/34	46,20
6	94400-0408200	1	FUEL TUBE	4.8*8	34,65
7	94301-12160	2	DOWEL PIN	9.5*12*16	13,48
8	91000-06035B	8	HEX SOCKET BOLT(WHITE ZINC)	6*35	7,70
9	93903-04008K	2	PAN HEAD TAPPING SCREW (BLACK ZINC)	4*8	2,31
10	11351-120-00A	3	CLAMP		10,78
11	11359-116-001	1	CRANKCASE COVER GASKET	非石棉	161,70
12	94301-10140	4	DOWEL PIN	8*10*14	6,93
13	11341-201-000JA	1	LEFT CRANKCASE COVER	新	962,50
14	91000-06060B	1	HEX SOCKET BOLT(WHITE ZINC)	6*60	15,40
15	91000-06025B	9	HEX SOCKET BOLT(WHITE ZINC)	6*25	6,16
16	96300-080320	1	SHAFT IDLER	8*32	13,48
17	15650-201-000	1	OIL PLUG	M14*P1.5	26,95
18	91312-104-000	1	OIL RING	11.8*2.6	7,70
19	96000-08012-10C	1	HEX WASHER FACE BOLT	8*12	11,55
20	94104-0816020	1	PLAIN WASHER (AL)	8*16*2	6,93
21	11111-104-000	1	OIL SEAL BRACKET		12,71
22	91000-06010B	1	HEX SOCKET BOLT(WHITE ZINC)	6*10	3,85
23	11121-116-001	1	GENERATOR GASKET	非石棉	23,10
24	94512-4300R	1	INTERNAL CIR CLIP	RTW-43	61,60
25	11351-104-000	1	CARBURETOR TUBE BRACKET	6.5孔	11,55
26	11102-116-000	1	PROTECT SHROUD		11,55
27	24424-201-000	1	REVERSE STOPPER LUMP		30,80
28	11150-145-000	1	CRANKCASE FIX SHAFT(REV.1)	114mm	46,20
29	24434-199-000	1	SHIFT NUT		38,50
30	24702-199-000	1	SHIFT BRACKET		46,20

Tegning	Reservepartsnummer	Antal	Varebeskrivelse	Mål	Udsalgspris DKK
203-E08C	CRANKCASE				

203-E08A CRANKCASE

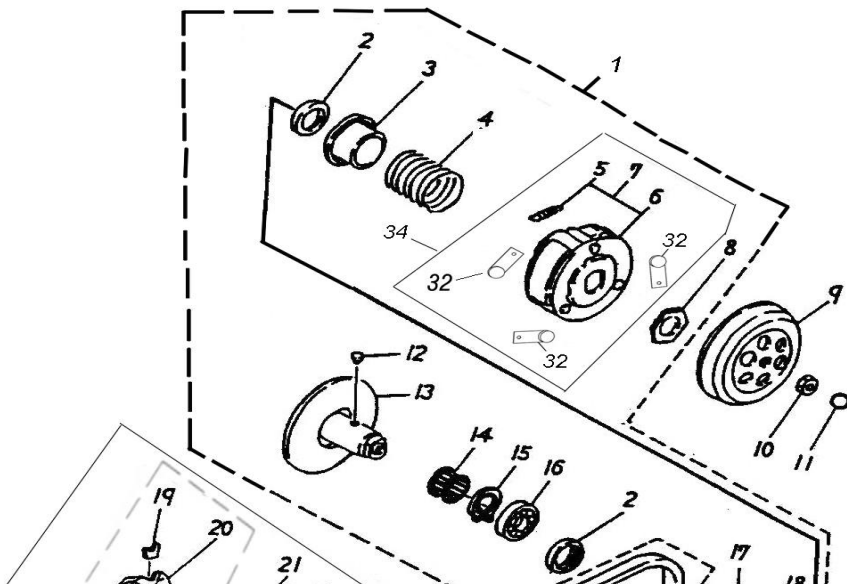


組件編號:203-E08 C		曲軸箱(EU2)無ADLYCRANKCASE			
Item	No./Parts No./Unit	Q	'tyl Parts Name		
項次	部品番號	用量		零件名稱	
31	94103-1622012	2	COPPER PLAIN WASHER	16.5*22*1.2	15,40
32	24432-199-000	1	SHIFT SPRING	7.4*40*1.2	30,80
33	24423-199-000	1	SHIFT		46,20
34	96403-1015011	1	SPACE TUBE	10*15*11	50,05
35	11351-201-000	1	CLAMPER CARB,DRAIN TUBE	M8孔	15,40
36	91317-179-000	1	OIL RING	17*2.5	7,70
37	35751-199-001	1	SHIFT GEARS SWITCH CONTACT		296,45
38	35750-199-0A1	1	SHIFT GEARS SWITCH CONTACT ASSY		296,45
39	96000-06012-08G	1	HEX WASHER FACE BOLT(GREEN ZINC)	6*12	3,85
40	94103-0610008	1	COPPER PLAIN WASHER	6*10*0.8	11,55
41	24711-201-000	1	REVERSE BRACKET		69,30
42	94104-1420016	1	PLAIN WASHER	14*20*1.6	11,55

Tegning	Reservevedelsnummer	Antal	Varebeskrivelse	Mål	Udsalgspris DKK
Item	No./Parts No./U	nit Q	'tyl Parts Name		
項次	部品番號	用量		零件名稱	
====	=====	====	=====	=====	
1	22000-203-000	1	DRIVE FACE ASSA (B)	B	1.386,00
2	96500-33394	2	OIL SEAL	33*39*4	41,58
3	23237-116-000	1	SECONDARY SPRING SEAT		50,05
4	23233-117-000	1	COMPRESSION SPRING		59,68
5	22401-116-000	3	CLUTCH WEIGHT SPRING		11,55
6	22350-116-000	1	CLUTCH CARRIER		346,50
7	22535-116-000	1	CLUTCH WEIGHT SET		462,00
8	90202-116-000	1	NUT	28*38*4	30,80
9	22100-116-000	1	CLUTCH COVER COMP		288,75
11	91313-104-000	1	OIL RING	12.5*3	3,85
12	23225-116-000	2	GUIDE PIN		9,63
13	23200-116-000	1	SECONDARY FIX SLOT WHEEL		577,50
14	96200-172518	1	NEEDLE BEARING	HKS-17*25*18	134,75
15	94512-240IR	1	INTERNAL CIR CLIP	IRTW-24	11,55
16	96100-6901U	1	RADIAL BALL BEARING	6901LU	151,31
17	23220-116-000	1	SECONDARY SLIDING SLOT WHEEL		462,00
18	91336-104-000	2	OIL RING	36*2	16,17
19	22132-104-000	3	CAM PLATE SLIDER		19,25
20	22131-117-000	1	CAM PLATE		46,20
21	22121-117-000	6	WEIGHT ROLLER (7.5 g)	7.5 g	19,25
22	96401-212622	1	BUSHING	21*26*22.3	38,50
23	22110-203-000	1	PRI. SLIDING WHEEL SET		200,20
24	22103-203-000	1	SLIDING DRIVE FACE		296,45
25	23100-201-000	1	V-BELT	788*17*28	539,00
26	96401-1621375	1	BUSHING	16*21*37.5	69,30
27	22102-117-000	1	PRIMARY FIX SHEAVE		107,80
28	22150-104-000	1	CLAW WASHER		3,85
29	22140-104-000	1	ONEWAY CLUTCH		62,37
30	22145-104-000	1	CONE SPRING WASHER	10.2*24*2.6	9,63
====	=====	====	=====	=====	

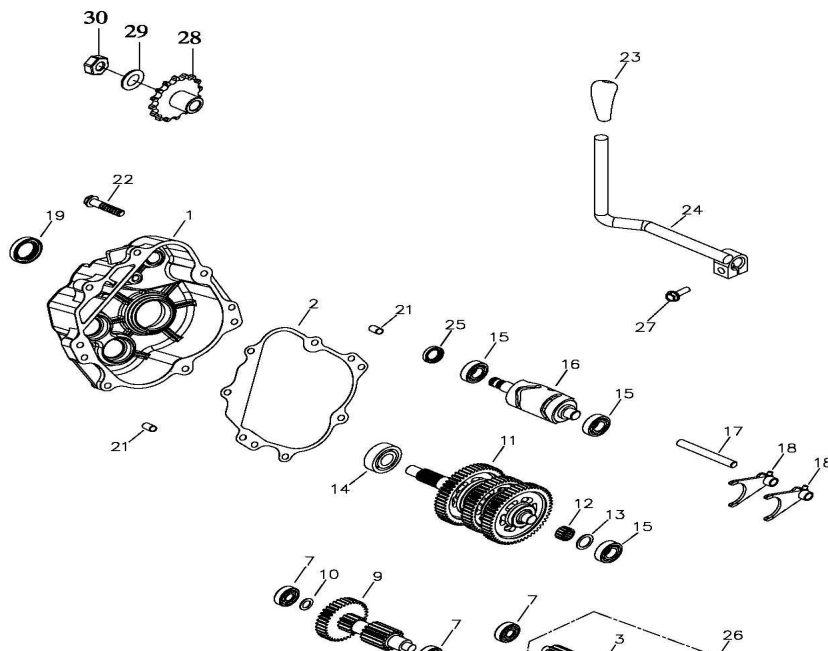
203-E10 CLUTCH

CLUTCH

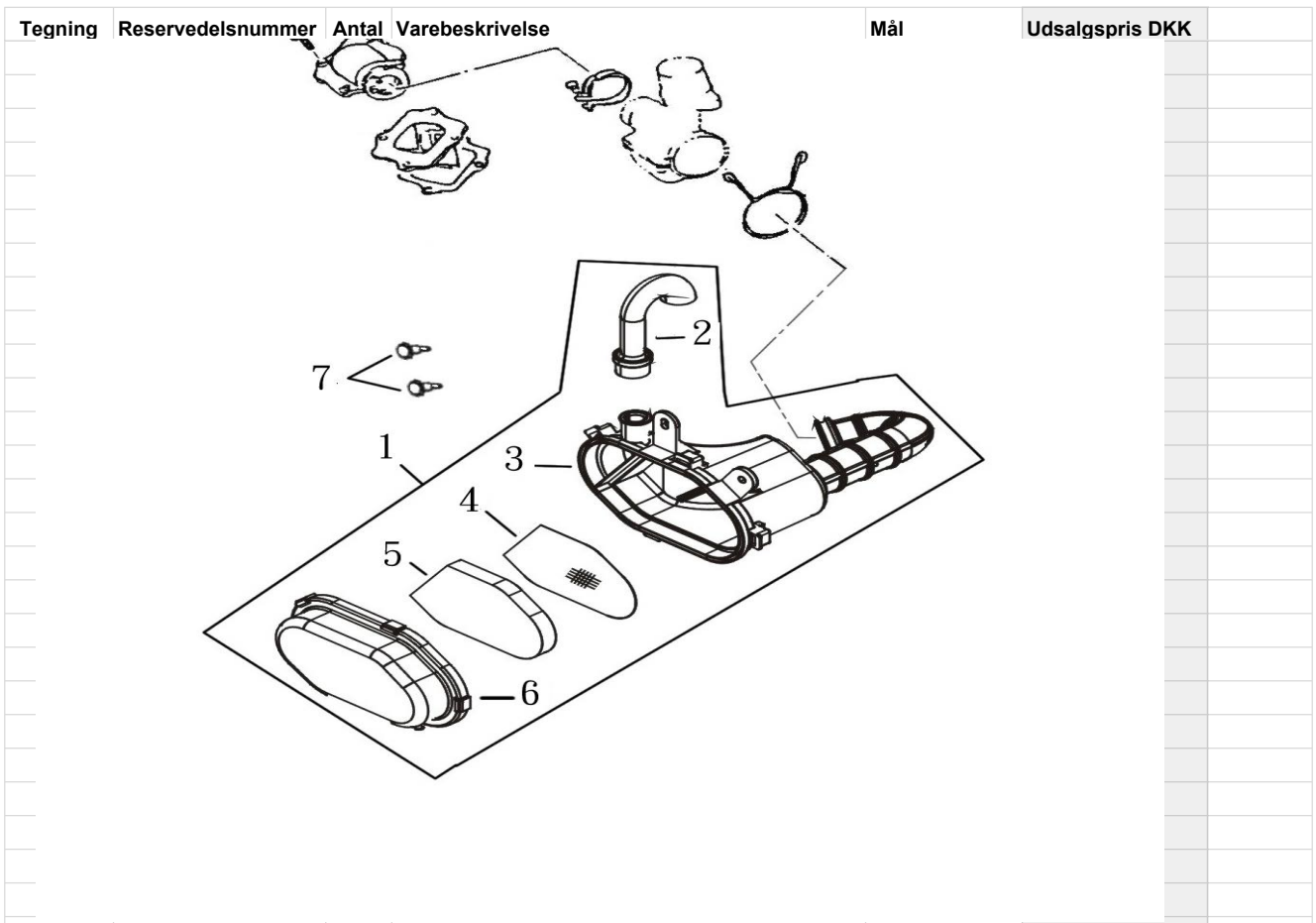


Tegning	Reservevedelsnummer	Antal	Varebeskrivelse	Mål	Udsalgspris DKK
組件編號:203-E10			離合器CLUTCH		
Item	No./Parts No./U	nit Q	'tyl	Parts Name	
項次	部品番號	用量		零件名稱	
31	94050-10000G	2		HEX FLANGE NUT (GREEN ZINC)	M10 5,78
32	22540-201-000	3		SPRING PLATE	L=36 77,00
33	22133-117-000	1		CAM PLATE ASSY	96,25
34	22530-201-000	1		CLUTCH WEIGHT ASSY	519,75
203-E01 TRANSMISSION					

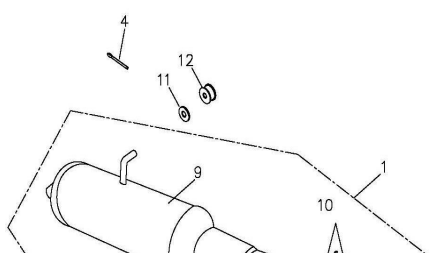
GEAR SHAFT



Tegning	Reservevedelsnummer	Antal	Varebeskrivelse	Mål	Udsalgspris DKK
					
組件編號:203-E11			傳動機構TRANSMISSION		
Item	No./Parts No./U	nit Q	tyl Parts Name		
項次	部品番號	用量		零件名稱	
1	21301-199-00B	1	MISSION COVER	成品	577,50
2	21395-199-000	1	MISSION COVER GASKET		127,05
3	23411-199-000	1	DRIVE SHAFT		481,25
4	23407-199-000	1	IDLE GEAR		519,75
5	96200-172110	2	NEEDLE BEARING	17*21*10	184,80
6	96403-172112	1	SPACE TUBE	17*21*12	77,00
7	96100-62010	3	RADIAL BALL BEARING	6201C3	51,98
8	96100-60030	1	RADIAL BALL BEARING	6003CM/2AS	77,00
9	23211-199-000	1	MIDDLE AXLE		635,25
10	94105-1220010	1	PLAIN WASHER	12*20*1	8,47
11	23220-199-00A	1	DRIVE AXLE ASSY		1.732,50
12	96200-182213	1	NEEDLE BEARING	18*22*13	184,80
13	94105-1624010	1	PLAIN WASHER	16*24*1.0	96,25
14	96100-62040	1	RADIAL BALL BEARING	6204C3	96,25
15	96100-62020	3	RADIAL BALL BEARING	6202	69,30
16	24630-199-001	1	GEAR SHIFT ARM		385,00
17	24241-199-000	1	GEAR SHIFT FORK GUIDE SHAFT	12*100	69,30
18	24211-199-000	2	GEAR SHIFT FORK		261,80
19	96500-20357	1	OIL SEAL	20*35*7	30,80
20	96500-17306	1	OIL SEAL	17*30*6	19,25
21	94301-08140	2	DOWEL PIN	6.3*8*14	7,70
22	96000-08035-12G	7	HEX FLANGE BOLT(GREEN ZINC)	M8*35	11,55
23	24807-231-000	1	KNOB	新品	130,90
24	24707-201-00E	1	SHIFT ROD		134,75
25	96500-15267	1	OIL SEAL	15*26*7	19,25
26	23202-199-000	1	MAIN SHAFT ASSY		1.193,50
27	96000-06020-10G	1	HEX FLANGE BOLT(GREEN ZINC)	M6*20	5,78
28	23801-203-000	1	DRIVE SPROCKET	428-21T	308,00
29	94105-1529030G	1	PLAIN WASHER(GREEN ZINC)	15*29*3	26,95
30	90350-14000G	1	NYLON NUT(GREEN ZINC)	M14	14,63
=====					
145-F01 AIR CLEANER					
REED VALVE ,AIR CLEANER					



Tegning	Reservepartsnummer	Antal	Varebeskrivelse	Mål	Udsalgspris DKK
組件	編號 : 145-F01		空氣濾清器 AIR CLEANER		
Item	No. Parts No. Un	it Q'	tyl Parts Name		
項次	部品番號	用量		零件名稱	
1	17200-166-000	1	AIR CLEANER ASS Y		442,75
2	17219-166-000	1	GUIDE PIPE	PVC+NBR	69,30
3	17206-166-000	1	AIR CLEANERY		231,00
4	17210-166-000	1	CLEANER FILTER NET		46,20
5	17205-166-000	1	AIR CLEANER ELEMENT		73,15
6	17207-166-000	1	AIR CLEANER COVER		57,75
7	90111-06012-10K	2	LADDER BOLT(BLACK ZINC)	6*12*3.8	9,63
218-F02 EU2EXHAUST					

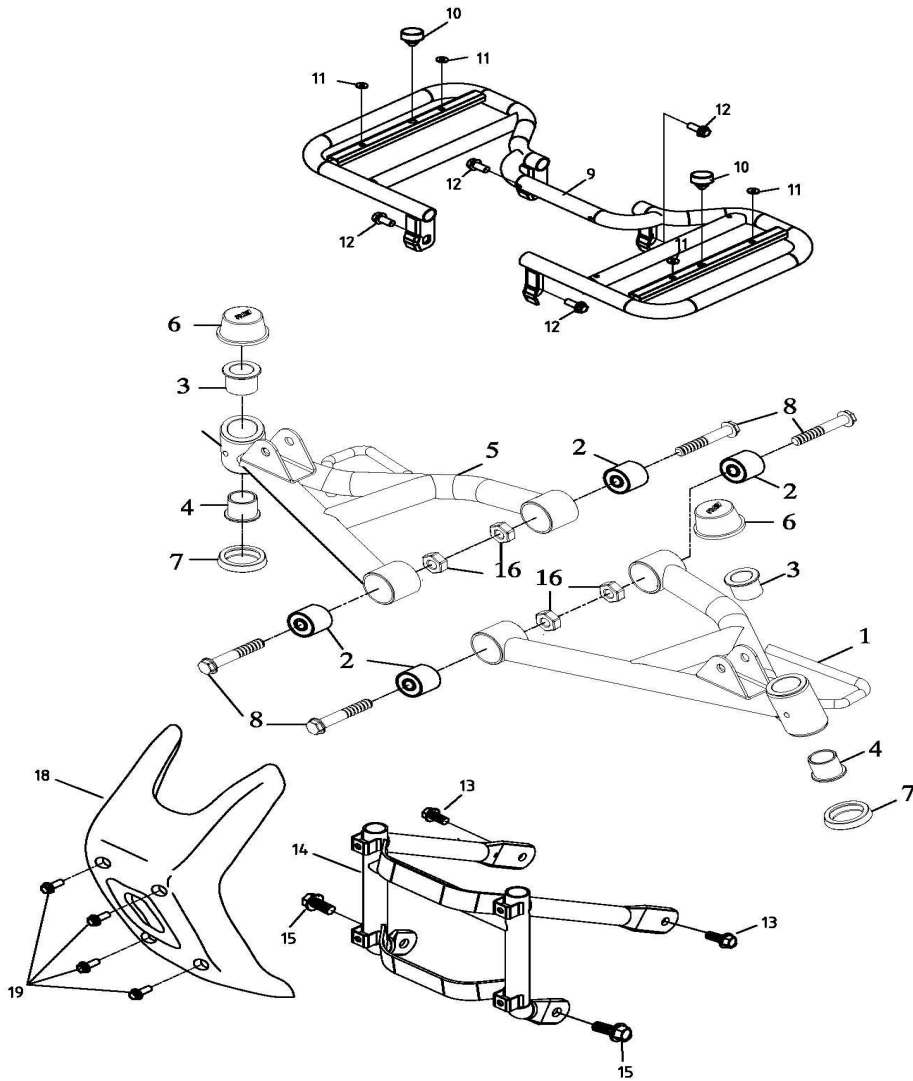


Tegning	Reservevedelsnummer	Antal	Varebeskrivelse	Mål	Udsalgspris DKK
組件	編號：219-F03		車架(認證)FRAME BODY		
Item	No. Parts No. Unit	Q	'tyl Parts Name		
項次	部品番號	用量		零件名稱	
1	50100-201-00F	1	FRAME COMP		3.157,00
2	96100-6002ZZ	1	RADIAL BALL BEARING	6002ZZ	65,45
3	94512-3200R	1	INTERNAL CIR CLIP	RTW-32	7,70
4	94053-14000G	2	NUT(GREEN ZINC)	14mm	30,80
5	77211-145-001	2	RUBBER		15,40
6	17505-145-000	1	SPONGE PAD	15*100*4	23,10
7	50354-145-002	1	L. ENGINE FIXED PLATE(REV.2)	直	34,65
8	96000-10020-14G	3	HEX WASHER FACE BOLT	10*20	17,33
9	96000-10208-14C	1	HEX WASHER FACE BOLT(YELLOW ZINC)	10*208	46,20
10	52116-201-000	2	SWING ARM BOLT		134,75
11	90350-06000G	6	NYLON NUT(GREEN ZINC)	M6	5,78
12	52104-201-000	2	SWING ARM SPACER	2T-50.100	96,25
13	92006-06014-10G	8	HEX WASHER FACE BOLT(GREEN ZINC)	6*14墊圈18	9,63
14	52100-201-001	1	SWING ARM SUB ASSY		770,00
15	52103-145-000	4	BUSH	20*27.4*20	19,25
16	83402-181-001	1	REAR COVER UP LEFT FIXED PLATE		107,80
17	83403-181-001	1	REAR COVER UP RIGHT FIXED PLATE		107,80
18	90350-10000G	1	NYLON NUT(GREEN)	M10*P1.25	5,78
19	94101-0618020K	10	PLAIN WASHER(BLACK ZINC)	6*18*2	3,08
20	94102-145-0A1	4	RUBBER WASHER	5*22*3.2	19,25
21	91315-120-000	4	OIL-RING	15.2*1.5	11,55
22	11357-145-000	4	CABLE CLAMP RUBBER	耐寒	127,05
23	96000-10158-14C	1	HEX WASHER FACE BOLT(YELLOW ZINC)	10*158	46,20
24	94105-1022025G	1	PLAIN WASHER(GREEN ZINC)	10*22*2.5	12,32

Tegning	Reserveudelsnummer	Antal	Varebeskrivelse	Mål	Udsalgspris DKK
25	94050-10000G	1	HEX FLANGE NUT (GREEN ZINC)	M10	5,78
26	50353-201-000	1	R. ENGINE FIXED PLATE		134,75
27	54315-145-000	1			38,50
28	50110-145-000	1	FRAME NO. PLATE		26,95
29	90662-105-000	2	RIVET	#4-3	2,31

181-F04 ARM,FLOOR PANEL,BUMPER

186-F04 ARM,FLOOR,PANEL,BUMPER

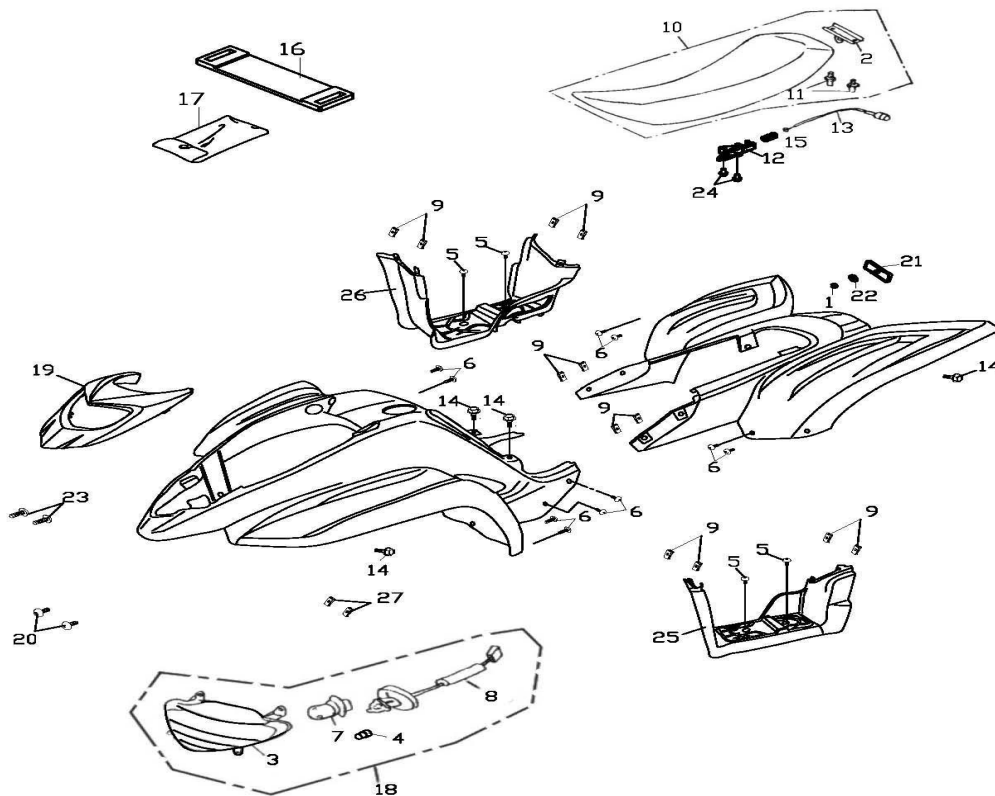


組件編	號：181-F04		三腳架,腳踏板,防護桿 ARM,FLOOR PANEL,BUMPER		
Item	No./Parts No./IU	nit Q	'tyl	Parts Name	
項次	部品番號	用量		零件名稱	
1	51300-145-001	1		LEFT SUSPENSION ARM(REV.1)	404,25
2	96400-102829	4		RUBBER BUSHING	25,03
3	51201-145-000	2		BUSH	14,63
4	51202-145-000	2		BUSH	10,78

Tegning	Reservevedelsnummer	Antal	Varebeskrivelse	Mål	Udsalgspris DKK
5	51200-145-001	1	RIGHT SUSPENSION ARM(REV.1)		404,25
6	51203-145-000	2	WATERPROOF COVER		15,40
7	51204-145-001	2	DUSTPROOF COVER	ECO	10,78
8	96000-10048-14G	4	HEX WASHER FACE BOLT(GREEN ZINC)	M10*48	19,25
9	64310-155-002	1	FLOOR PANEL		616,00
12	96000-10020-14G	4	HEX WASHER FACE BOLT	10*20	17,33
13	96000-06016-10G	2	HEX FLANGE BOLT(GREEN ZINC)	6*16	5,78
14	50104-155-001	1	BUMPER(REV.1)		346,50
15	96000-08016-12G	2	HEX WASHER FACE BOLT	8*16	11,55
16	90350-10000G	4	NYLON NUT(GREEN)	M10*P1.25	5,78
17	64330-145-000	1	FLOOR PANEL RUBBER CAP	∅ 18.5	7,70
18	50107-155-000FA	1	BUMPER COVER		115,50
19	96000-06012-10G	4	HEX WASHER FACE BOLT(GREEN ZINC)	6*12	7,70
20	94102-145-0A1	4	RUBBER WASHER	5*22*3.2	19,25
21	95011-145-000	2	RUBBER DAMPER		26,95
22	90351-06000C	4	HEX FLANGE NYLON NUT(YELLOW ZINC)	M6	15,40

181-F05 BODY COVER,SEAT

181-F05 BODY COVER,SEAT

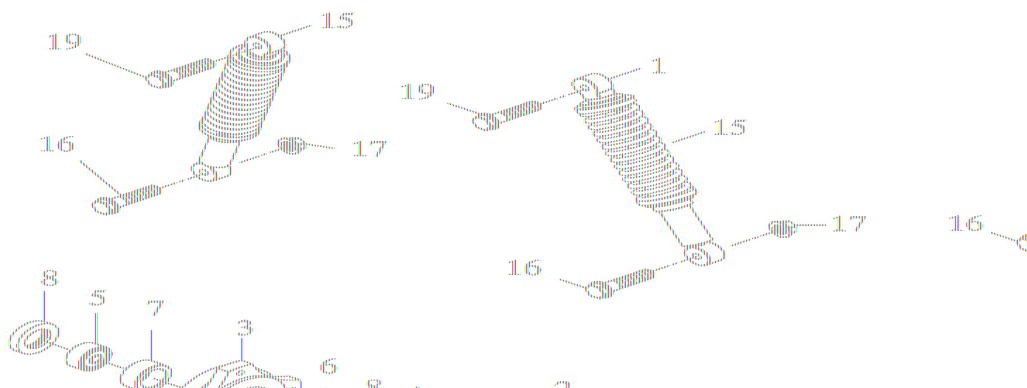


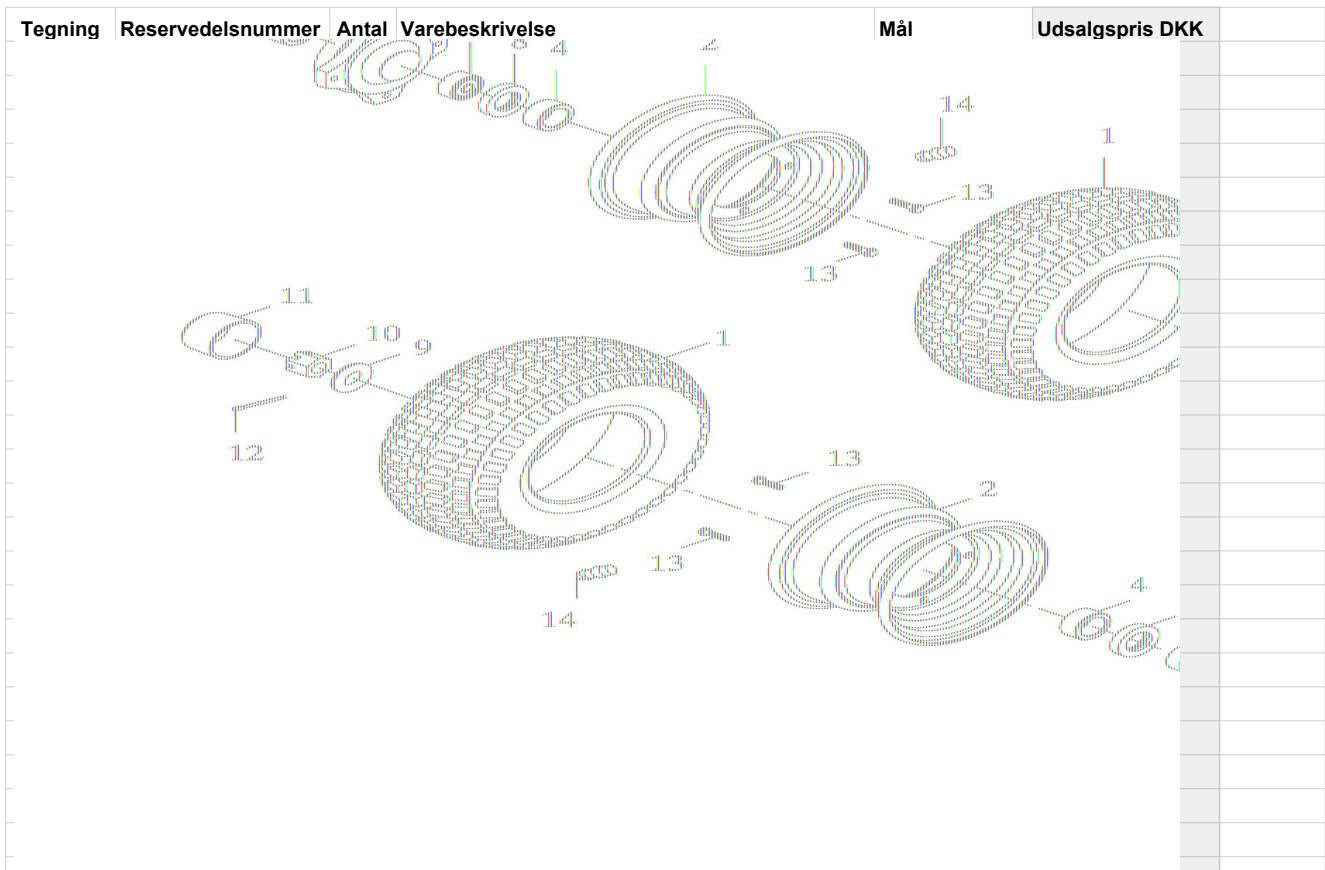
組件編	號：219-F05		車體蓋,座墊BODY COVER,SEAT		
Item	No./Parts No./IU	nit Q	'tyl	Parts Name	
項次	部品番號	用量		零件名稱	

Tegning	Reservepartsnummer	Antal	Varebeskrivelse	Mål	Udsalgspris DKK
				20	
組件	編號 : 216-F06		油箱,機油箱 FUEL TANK,OIL TANK		
Item	No./Parts No./Unit	Q	'tyl Parts Name		
項次	部品番號	用量		零件名稱	
1	55100-154-00B	1	OIL TANK	機油計量器	231,00
2	55105-145-001	1	OIL TANK CAP		34,65
3	92000-06018-16K	4	HEX BOLT(BLACK ZINC)-SMALL	6*18(墊圈16mm)	5,78
4	17505-145-00A	2	SPONGE PAD	30*100*4	30,80
5	17500-155-001	1	FUEL TANK COMP		308,00
6	17620-145-001	1	FUEL CAP ASSY		134,75
7	16952-145-000	1	PETROL FILTER		69,30
8	17512-145-000	1	FUEL TUBE		19,25
9	87723-116-000	1	DECAL, WARNING BATTERY PROPOSITION		19,25
10	16950-145-000	1	FUEL CUP		115,50
11	94510-08000	8	CLIP	8*0,8	3,85
12	17633-145-000	1	FUEL TANK TUBE		19,25
13	94400-0408110	2	HOSE	4,8*8*110	15,40
14	96000-06012-10G	1	HEX WASHER FACE BOLT(GREEN ZINC)	6*12	7,70
15	17631-145-000	1	FUEL TANK CAP GASKET		34,65
16	17513-145-000	1	FUEL TUBE		30,80
17	35410-116-000	1	OIL LEVEL GAUGE		146,30
18	17621-145-001	1	FUEL TANK CAP BODY	NYLON66	69,30
19	94400-0408465	1	TUBE	4,8*8*465	26,95
20	94402-1012050	1	PROTECTION TUBE	10*12*50	19,25
21	17632-145-001	1	FUEL TANK CAP BUSHING		25,03
22	94402-1012080	1	PROTECTION TUBE	10*12*80	15,40
23	94402-1012400	1	TUBE COVER	10*12*400	26,95
24	94402-1012120	1	PROTECTION TUBE	10*12*120	19,25

146-F07Q-1 FRONT WHEEL,SUSPENSION

146-F07A FRONT WHEEL





Tegning	Reserveledsnummer	Antal	Varebeskrivelse	Mål	Udsalgspris DKK
組件編號:146-F07Q-1					
			前輪,前避震器(速度錶)無字FRONT WHEEL,SUSPENSION		
Item	No./Parts No./U	nit Q	'tyl Parts Name		
項次	部 品 番 號	用 量		零 件 名 稱	
1	42711-146-01C	2	TIRE	19*7.00-8 F K290 2	1.155,00
2	42701-146-000	1	RIM	8*5.5	770,00
3	96000-10020-14B	8	HEX WASHER FACE BOLT	10*20	17,33
4	94101-1240045C	2	PLAIN WASHER(YELLOW ZINC)	12*40*4.5	13,48
5	42710-145-0AB	2	FRONT BRAKE DRUM		308,00
6	96500-22357	4	OIL SEAL	22*35*7	19,25
7	44620-145-000	2	SPACER TUBE	15*22*15	26,95
8	44311-145-000	2	FRONT COLLAR(REV.1)	15*22*10	38,50
9	96100-6002Z	2	RADIAL BALL BEARING	6002Z	69,30
10	96100-6003Z	2	RADIAL BALL BEARING	6003Z	77,00
11	94051-12000-17G	2	HEX,SLOTTED NUT(GREEN)	M12*15	19,25
12	42616-145-000	2	AIR NOZZLE		38,50
13	42814-145-00A	2	RUBBER COVER		34,65
14	94201-30320B	2	COTTER PIN(WHITE)	3*32	3,85
15	51400-145-000	2	FRONT CUSHION(REV.1)	230mm	365,75
16	92000-10040-14G	2	HEX BOLT(GREEN ZINC)	10*40	10,78
17	90350-10000G	4	NYLON NUT(GREEN)	M10*P1.25	5,78
18	52400-145-000	1	REAR CUSHION(REV.1)	245mm	770,00
19	42701-146-00A	1	FRONT RIM	8*5.5	731,50
20	96000-10040-14G	4	HEX FLANGE BOLT(GREEN)	M10*40	22,72
146-F08A-2 REAR WHEEL					

146-F08A REAR WHEEL

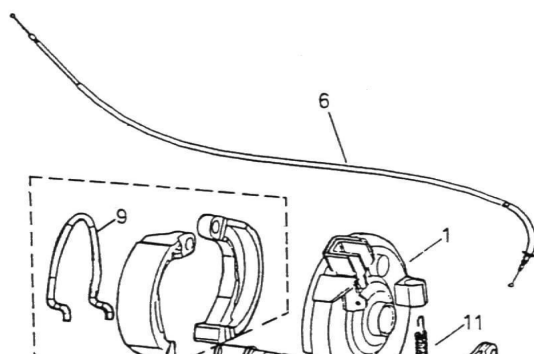
Tegning	Reservevedelsnummer	Antal	Varebeskrivelse	Mål	Udsalgspris DKK

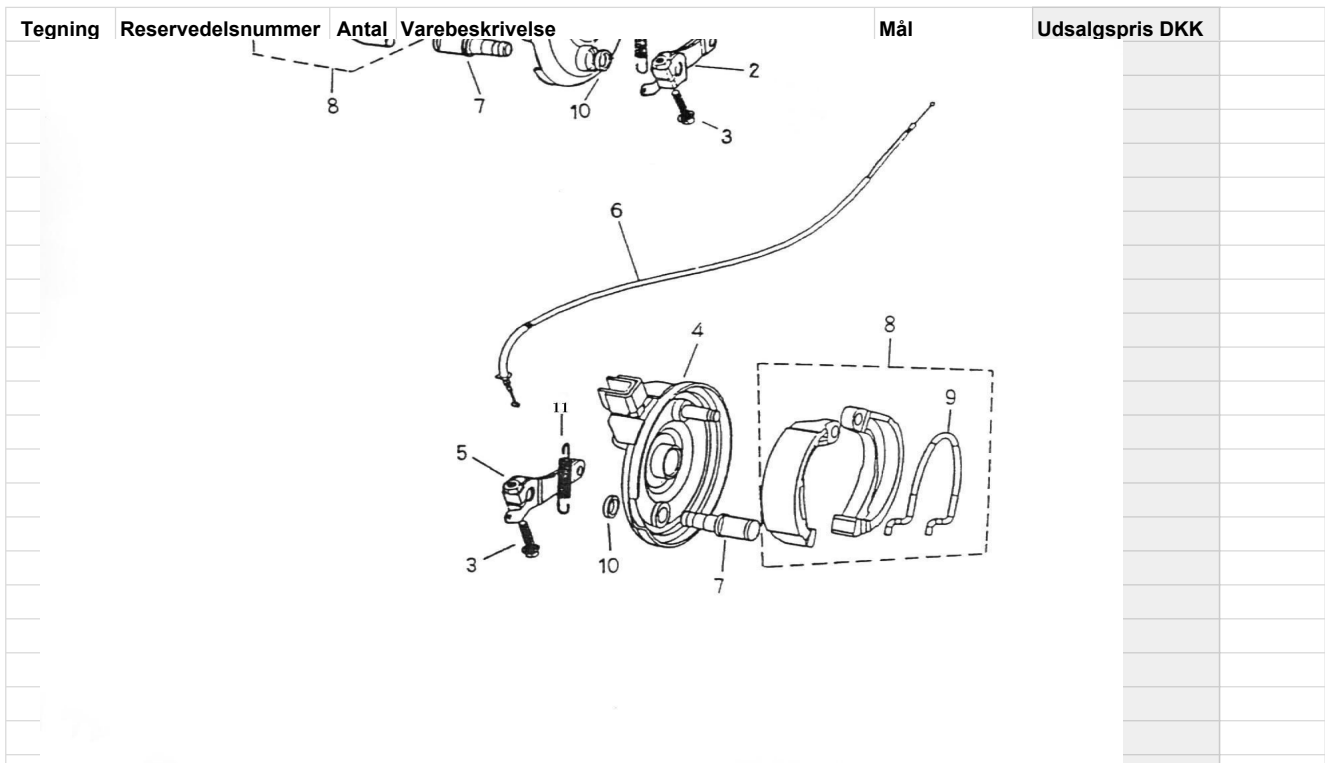
組件編號:146-F08A-2

後輪(無ADLY)REAR WHEEL

Item	No./Parts No./IU	nit Q	'tyl	Parts Name	零件名稱	
項次	部品番號	用量				
1	42811-146-01A	2		REAR TIRE	18*9.50-8 K290(E1)	1.193,50
2	42801-146-0AB	2		REAR RIM	8*7	770,00
3	94101-1440045C	2		PALIN WASHER(YELLOW ZINC)	14*40*4.5	15,40
4	42814-145-00A	2		RUBBER COVER		34,65
5	94052-14000-21C	2		SCOTCH FLANGE NUT(YELLOW ZINC)	14mm	26,95
6	42616-145-000	4		AIR NOZZLE		38,50
7	42036-145-001	2		REAR WHEEL HUB (REV.3)		269,50
8	94201-30320B	2		COTTER PIN(WHITE)	3*32	3,85
9	96000-10020-14B	8		HEX WASHER FACE BOLT	10*20	17,33
145-F09 FRONT BRAKE						

FRONT BRAKE

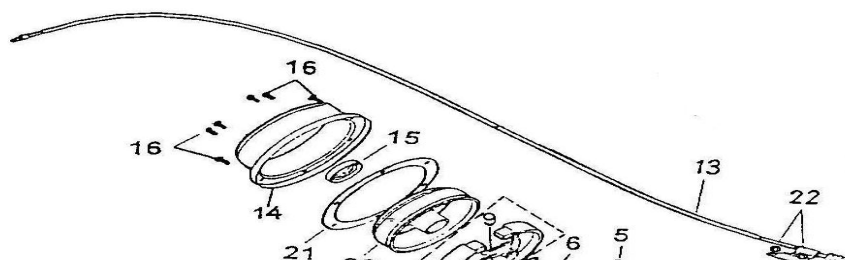


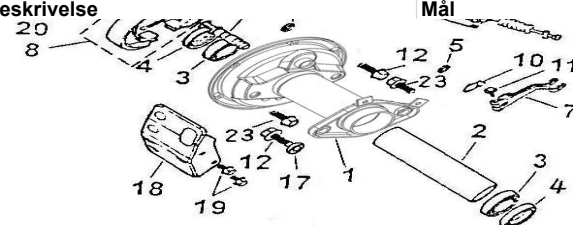


Tegning	Reserveledsnummer	Antal	Varebeskrivelse	Mål	Udsalgspris DKK
組件	編號 : 145-F09A		前剎車系統(EU2)FRONT BRAKE		
Item	No./Parts No./Unit	Q'	tyl Parts Name		
項次	部品番號	用量		零件名稱	
1	45010-145-00A	1	FRONT LEFT BRAKE PANEL(REV.1)		231,00
2	45410-145-000	1	FRONT LEFT BRAKE ARM		57,75
3	96000-05024-08C	2	HEX WASHER FACE BOLT(YELLOW ZINC)	5*24	2,31
4	45020-145-000	1	FRONT RIGHT BRAKE PANEL(REV.4)		200,20
5	45310-145-000	1	FRONT RIGHT BRAKE ARM		57,75
6	45450-145-000	2	FRONT BRAKE CABLE	L=822	84,70
7	45141-145-000	2	FRONT BRAKE CAM SHAFT(REV.3)		77,00
8	45120-145-001	2	FRONT BRAKE SHOE COMP	SOK133	134,75
9	45133-145-000	2	STRAIN SPRING		11,55
10	91313-104-000	2	OIL RING	12.5*3	3,85
11	45437-145-000	2	RESET SPRING		7,70

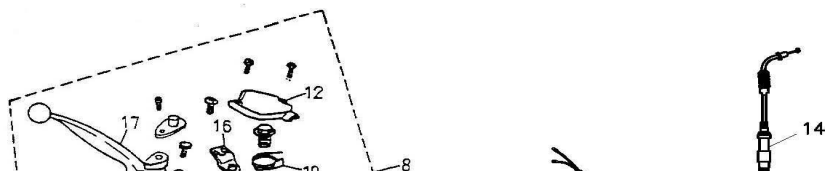
201-F10 REAR BRAKE

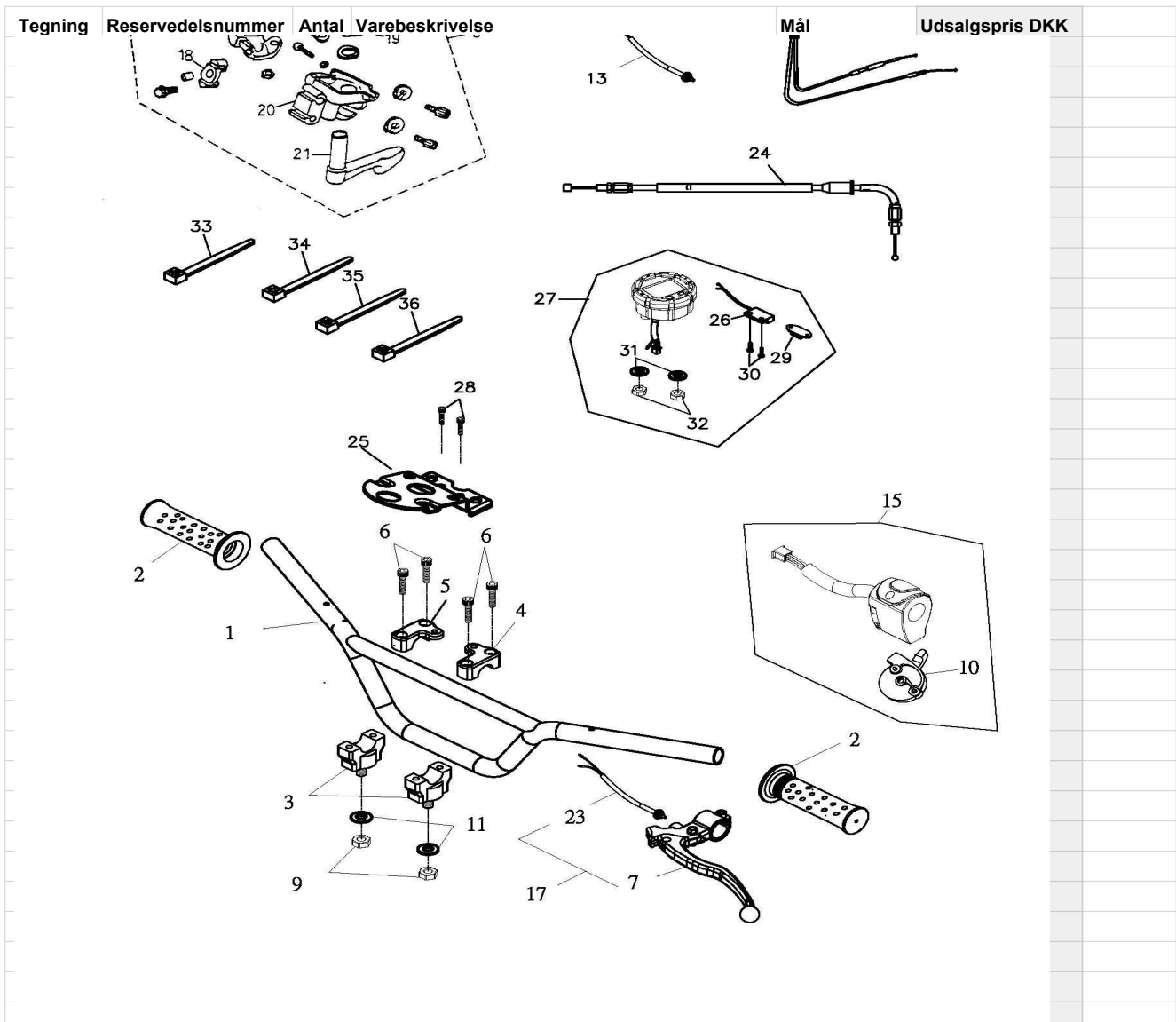
REAR BRAKE



Tegning	Reservevedelsnummer	Antal	Varebeskrivelse	Mål	Udsalgspris DKK
					
組件編	號：201-F10		後剎車系統 REAR BRAKE		
Item	No./Parts No./IU	nit Q	'tyl Parts Name		
項次	部 品 番 號	用 量		零 件 名 稱	
1	43101-201-001	1	REAR BRAKE PANEL		750,75
2	42313-145-000	1	REAR BRAKE PANEL SPACER	31*36.3*133.5	69,30
3	96100-6006ZZ	2	RADIAL BALL BEARING	6006ZZ	154,00
4	96500-355511	2	OIL SEAL	35*55*11	32,73
5	96500-14204	2	OIL SEAL	14*20*4	13,48
6	43141-145-000	1	REAR BRAKE CAM SHAFT(REV.1)		77,00
7	43410-145-000	1	REAR BRAKE ARM		61,60
8	43120-145-000	1	REAR BRAKE SHOE COMP.(REV.1)	SOK121	165,55
9	43151-145-000	2	SHOE STRAIN SPRING	1.6*36	11,55
10	42617-145-000	1	RETURN SPRING		11,55
11	96000-06032-10G	1	HEX FLANGE BOLT(GREEN ZINC)	M6*32	6,93
12	96000-1202717CL	2	HEX WASHER FACE BOLT(YELLOW ZINC)	12*27	34,65
13	43450-145-000	1	REAR BRAKE CABLE		123,20
14	42612-145-000	1	REAR DRUM COVER(REV.1)		385,00
15	96500-325211	1	OIL SEAL	32*52*11	23,10
16	96000-06012-08G	6	HEX WASHER FACE BOLT(GREEN ZINC)	6*12	3,85
17	94101-1225050C	1	PLAIN WASHER(YELLOW ZINC)	12*25*5	11,55
18	42613-145-000	1	REAR BRAKE COVER(REV.2)		88,55
19	96000-08012-12G	2	HEX WASHER FACE BOLT	8*12	6,93
20	42601-145-000	1	REAR DRUM(REV.2)		500,50
21	42614-145-000	1	REAR DRUM COVER GASKET	石棉	26,95
22	94050-08000G	2	HEX FLANGE NUT (GREEN ZINC)	M8	4,62
23	96000-1202217CL	2	HEX WASHER FACE BOLT(YELLOW ZINC)	12*22	30,80
=====					
216-F11I-1 HANDLE BAR					

216-F11I-1 HANDLE BAR



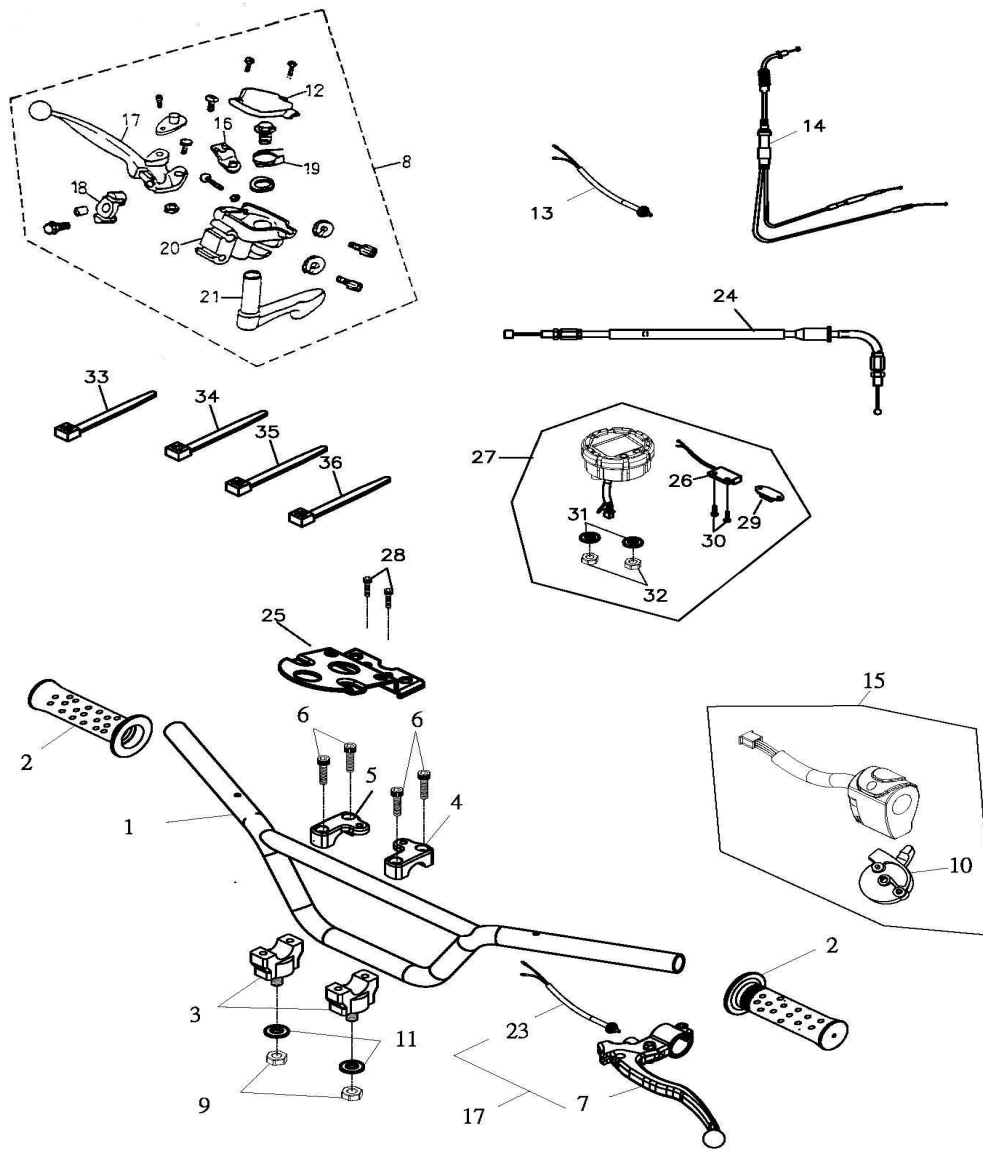


組件編號:216-F11I-1		手把(有229速度錶+無後視鏡)HANDLE BAR		
Item	No./Parts No./Unit	Q	'tyl Parts Name	
項次	部品番號	用量		零件名稱
1	53100-145-00C	1	HANDLE BAR(REV.1)	231,00
2	53166-155-000	2	HANDLE GRIP	38,50
3	53101-145-00A	2	HANDLE BAR BOTTOM CLAMP	96,25
4	53102-145-00A	1	LEFT HANDLE BAR CLAMP	57,75
5	53103-145-00A	1	RIGHT HANDLE BAR CLAMP	57,75
6	91000-06025B	4	HEX SOCKET BOLT(WHITE ZINC)	6*25 6,16
7	53178-155-000	1	LEFT LEVER	104,72
8	53170-155-00A	1	RIGHT LEVER ASSY	螺絲 L=20mm 500,50
9	90350-10000G	2	NYLON NUT(GREEN)	M10*P1.25 5,78
10	35210-201-000	1	REVERSE SWITCH	77,00
11	94105-1022025G	2	PLAIN WASHER(GREEN ZINC)	10*22*2.5 12,32
12	53171-155-00A	1	LEVER BODY COVER	57,75
13	35340-155-000	1	R.BRAKE SWITCH WIRE	77,00
14	17910-145-001	1	THROTTLE CABLE	345mm ECO保護套 154,00
15	35200-201-000	1	L.HANDLE SWITCH ASSY	462,00
16	53174-155-000	1	THROTTLE CABLE BRACKET	19,25
17	53175-155-000	1	RIGHT LEVER	107,80
18	53173-145-000	1	CABLE BRACKET	57,75

Tegning	Reservepartsnummer	Antal	Varebeskrivelse	Mål	Udsalgspris DKK
19	53184-155-000	1	THROTTE LEVER SPRING		7,70
20	53172-155-000	1	LEVER BRACKET		154,00
21	53180-155-000	1	THROTTLE LEVER		77,00
22	53179-155-000	1	LEFT LEVER ASSY(REV.1)		269,50
23	35345-145-000	1	L.BRAKE SWITCH WIRE		77,00
24	43480-201-000	1	REVERSE CABLE		146,30
25	37212-145-00B	1	INDICATOR LIGHT PLATE		115,50
26	37218-229-001	1	SENSOR ASSY(3)		115,50
27	37200-229-00E	1	SPEEDOMETER ASSY		1.578,50
28	91000-06012K	2	HEX SOCKET BOLT(BLACK ZINC)	6*12	5,01
29	37217-145-000	1	MAGNET	方型	77,00
30	93500-03008C	2	PAN PHILLIPS BOLT(YELLOW ZINC)	3*8	11,55

=====
 216-F11I-1 HANDLE BAR

216-F11I-1 HANDLE BAR



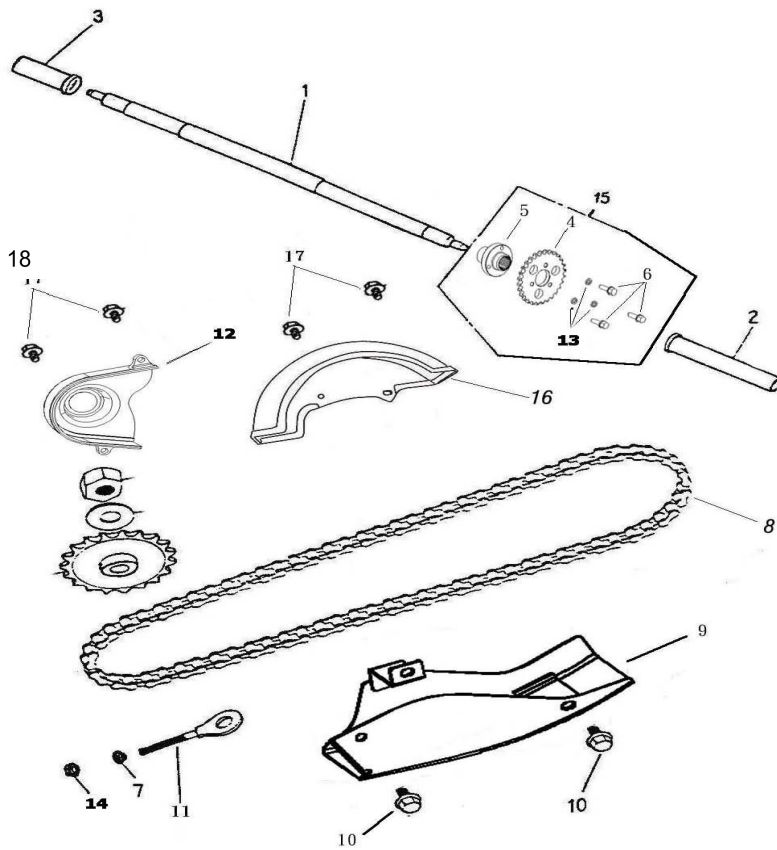
組件編號:216-F11I-1

手把(有229速度錶+無後視鏡)HANDLE BAR

Tegning	Reservepartsnummer	Antal	Varebeskrivelse	Mål	Udsalgspris DKK
----	-----	--	-----	-----	
Item	No./Parts No./Unit	Q	'tyl Parts Name		
項次	部品番號	用量		零件名稱	
====	=====	=====	=====	=====	
31	94101-0615010K	2	PLAIN WASHER(WHITE ZINC)	6.5*15*1	2,31
32	94050-06000G	2	HEX FLANGE NUT (GREEN ZINC)	M6	2,70
33	90669-101-000	1	CABLE TIE	4.8*200 m/m	3,85
34	90669-101-00A	2	CABLE TIE	4.8*250m/m	2,70
35	90669-168-000	1	CABLE TIE	3*150 m/m	2,31
36	90669-179-000	1	TIE RAP	2.5*100	38,50
====	=====	=====	=====	=====	

201-F12 REAR WHEEL AXLE,CHAIN

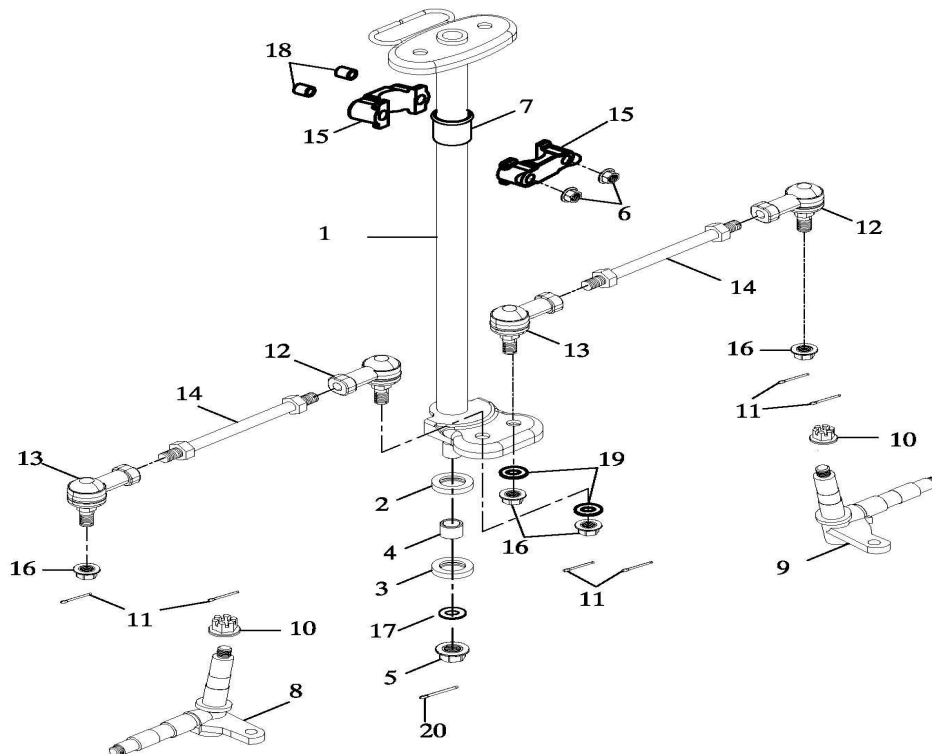
201-F12 REAR WHEEL ASLE, CHAIN

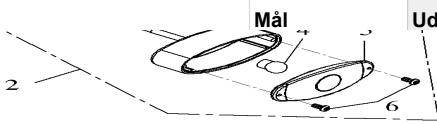


組件編	號：201-F12		後輪軸,鏈條 REAR WHEEL AXLE,CHAIN		
----	-----	----	-----	-----	
Item	No./Parts No./IU	nit Q	'tyl Parts Name		
項次	部品番號	用量		零件名稱	

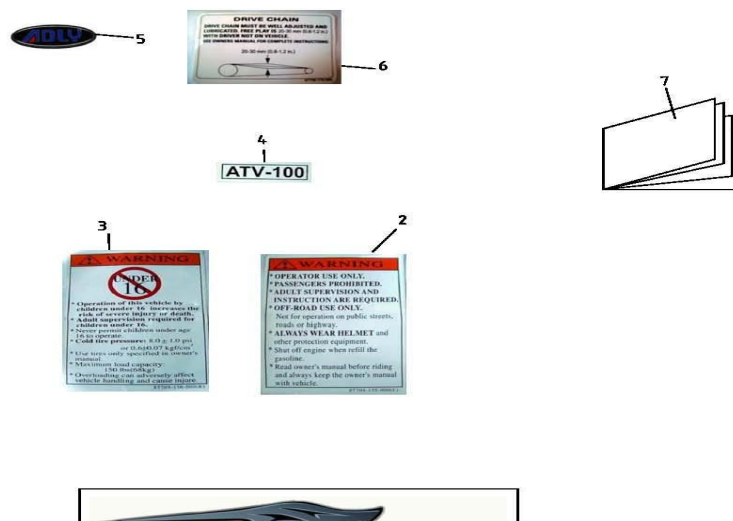
Tegning	Reservepartsnummer	Antal	Varebeskrivelse	Mål	Udsalgspris DKK
1	42301-145-000	1	REAR WHEEL AXLE	711mm	1.039,50
2	42620-145-001	1	RIGHT SPACER COLLAR		107,80
3	42622-145-001	1	LEFT SPACER COLLAR		107,80
4	41201-203-000	1	REAR SPROCKET	428-28T	231,00
5	42610-203-000	1	FINAL DRIVE FLANGE(REV.1		288,75
6	96000-08020-12G	3	HEX FLANGE BOLT(GREEN ZINC)	M8*20	7,70
7	94001-08000K	1	HEX NUT(BLACK ZINC)	8mm 14對邊	2,70
8	40530-203-001	1	DRIVE CHAIN	428SH 74目	346,50
9	40510-201-000	1	CHAIN LOWER PROTECT COVER		134,75
10	96000-08012-12G	2	HEX WASHER FACE BOLT	8*12	6,93
11	40543-145-001	1	DRIVE CHAIN ADJUSTER	8 MM	30,80
12	40511-197-000	1	FRONT CHAIN COVER		77,00
13	94111-0814520G	3	SPRING WASHER(GREEN ZINC)	8*14.5*2	1,54
14	94053-08000G	1	NUT(GREEN ZINC)	8mm	11,55
15	42600-203-000	1	REAR SPROCKET ASSY	28T	404,25
16	40511-201-000	1	REAR CHAIN COVER		50,05
17	96000-06012-10G	2	HEX WASHER FACE BOLT(GREEN ZINC)	6*12	7,70
18	94050-08000G	1	HEX FLANGE NUT (GREEN ZINC)	M8	4,62
19	96000-06020-10G	2	HEX FLANGE BOLT(GREEN ZINC)	M6*20	5,78
155-F13	STEERING				


145-F13 STEERING



Tegning	Reservevedelsnummer	Antal	Varebeskrivelse	Mål	Udsalgspris DKK
					
組件	編號：145-F15		後燈TAIL LIGHT		
Item	No./Parts No./Unit		Parts Name		
項次	部品番號	用量		零件名稱	
1	50357-145-00A	1	TAIL LIGHT FIX BRACKET		38,50
2	33700-145-000	1	TAIL LIGHT ASSY (E-MARK,SAE)	e11-50R-000014	277,20
3	33711-145-000	1	REAR LIGHT BASE		231,00
4	34906-128-000	1	TAIL LIGHT BULB	12V 21/5W	57,75
5	33702-145-000	1	TAIL LIGHT LENS		77,00
6	93500-04010B	2	PAN PHILLIPS BOLT	4*10	3,08
7	94101-0615010K	2	PLAIN WASHER(WHITE ZINC)	6.5*15*1	2,31
8	96000-06012-10G	2	HEX WASHER FACE BOLT(GREEN ZINC)	6*12	7,70
9	90350-06000G	2	NYLON NUT(GREEN ZINC)	M6	5,78
186-A01C	STICKER				

186-A01 STICKER



Tegning	Reserveordnummer	Antal	Varebeskrivelse	Mål	Udsalgspris DKK
					
組件編號:186-A01C			貼紙+新ADLYSTICKER		
Item	No./Parts No./IU	nit Q'	tyl Parts Name		
項次	部品番號	用量		零件名稱	
====	=====	====	=====	=====	
1	87700-181-000	1	STICKER(SET)		173,25
2	87704-155-000	1	STICKER, WARNING		30,80
3	87705-156-000	1	STICKER, WARNING(Y-16)	Y-16	23,10
4	87711-149-000	1	SIRIPE STICKER		5,78
5	87700-888-0FZ	1	ADLY POLY STICKER		0,00
6	87739-179-000	1	CHAIN INSTRUCTION DECAL		46,20
7	50122-145-000	1	OWNER S MANUAL		53,90
====	=====	====	=====	=====	
181-C01 ACCESSORY					
181-C01A ACCESSORY(EU2)					
