

In-Ex

OWNER'S MANUAL

FOR THE



Sprayer 200/400 range

In-Ex™
P O Box 1010, 145 Harts Road
Palmerston North
Ph: 06 354 6060
Fax: 06 355 3199
E-Mail: sales@c-dax.co.nz
www.c-dax.co.nz

SAFETY PRECAUTIONS

Warnings are mandatory instructions to prevent serious injury or permanent damage.

Cautions are advisory instructions to ensure reliable operation of the equipment.

Notes are for convenient operation.

WARNING

Making pesticides is a most dangerous time as it involves handling the concentrated material. For toxic compounds, use protective clothing such as overalls, hat, gloves, boots and respirator.

When using concentrated sprays, full protection is necessary.

When using diluted sprays, wear at least a hat, long-sleeved cotton overalls and boots. If you use pesticides regularly it is a good idea to always wear a respirator to avoid cumulative effect ... other protection may be required – check the label. It may have specific directions for that particular chemical.

Protective clothing should always be properly cared for. Rinse heavily contaminated clothes in the open before washing in the laundry.

Wash and dry these clothes every day – but keep them separate from other washing.

Respirators need special care ... clean respirator after spraying. Use soapy water then rinse and allow to dry completely before storing in a clean plastic bag. Replace canisters in respirator after every 8 hours use.

In-Ex Sprayer 200/400 range

OWNER'S MANUAL

(Pt.No.2400-5200 Issue 11, October 2015)

TABLE OF CONTENTS

2	Safety Precautions
	Table of Contents
3	Description
	Specifications
	Order Information
4	Warranty
	Liability
4	Operating Hints
	Suction Filter
	Chemical Application
	Chemical Advice
6	Maintenance
	Cleaning
	Filters
	Pressure Switch Adjustment
7	Troubleshooting
8	Parts Diagrams

CAUTION

The Sprayer 200/400T utilizes floatation tyres to dampen bumps. It is essential that these tyres are not over-inflated otherwise the unit will be exposed to excessive shock. The recommended tyre pressure is 5-7 psi.

DESCRIPTION

The In-Ex Sprayer 200 & 400 litre amenity/boom sprayers are a series of high strength spray tanks manufactured of non-corrosive polyethylene that either come complete as a trailed unit or as a stand alone tank and frame assembly for deck mounting.

SPECIFICATIONS

(Specifications subject to change without notice)

Capacity	200L or 400L
Power Consumption	12 VDC 12A (Max)
Pump	12 VDC Flojet
Tank	Non-corrosive, medium density, UV stabilised polyethylene
Filtration	Inline suction filter spray gun/boom filter(s)
Frame	Zinc plated mild steel
Tyre Pressure	7 Psi

ORDER INFORMATION

200L

Deck Mounted with Hand lance

In-Ex Sprayer 200 Pt.No. 1028

Deck Mounted with Hand lance and 4.5m spray boom

In-Ex Sprayer 200+4.5m Boom Pt.No. 1090

Trailed with Hand lance

In-Ex Sprayer 200 Trailed Pt.No. 1026

Trailed with Hand lance and 4.5m spray boom

In-Ex Sprayer 200Trailed+4.5mBoom Pt.No. 1089

400L

Deck Mounted with Hand lance

In-Ex Sprayer 400 Pt.No. 1096

Deck Mounted with Hand lance and 4.5m spray boom

In-Ex Sprayer 400+4.5m Boom Pt.No. 1098

Trailed with Hand lance

In-Ex Sprayer 400 Trailed Pt.No. 1095

Trailed with Hand lance and 4.5m spray boom

In-Ex Sprayer 400Trailed+4.5mBoom Pt.No. 1097

WARRANTY

1 WARRANTY AND LIABILITY

Use of the equipment

- 1.1 You must satisfy yourself as to the suitability of the equipment for your intended use(s) of the equipment.

Your relationship with the retailer

- 1.2 Where you consider you have a warranty claim (or any other claim) in relation to the equipment, you must contact the retailer who sold you the equipment, not C-Dax directly. The retailer is responsible for liaising with C-Dax in respect of your claim.

Warranty

- 1.3 C-Dax warrants to the original purchaser that the equipment is sold free from defects in materials and workmanship for a period of 12 months from date of first retail sale (6 months from date of first retail sale if the equipment is sold in the U.K.) subject to the terms set out below.
- 1.4 C-Dax will at its option repair or replace the defective equipment (or part of the equipment) or notify the retailer of the equipment to refund the purchase price for such defective equipment to you in the event of a breach of this warranty, subject to the terms set out below.

Liability

- 1.5 Except for the warranty set out in clause 1.2 above, all warranties and representations (including those expressed or implied by law) in respect of the equipment or advice relating to the equipment provided to you by C-Dax are excluded to the extent permitted by law.
- 1.6 Notwithstanding anything else in this manual, C-Dax's maximum liability to you (in the event that such liability exists) in respect of any breach of warranty, any matter set out in this manual, or for defective equipment or advice relating to the equipment provided is limited at C-Dax's option to:
- (a) repairing or replacing the equipment (or part of the equipment); or
 - (b) notifying the retailer of the equipment to refund the price for the equipment paid by you.
- 1.7 Notwithstanding anything else in this manual, in no event will C-Dax be liable, whether in contract, tort (including negligence) or otherwise:
- (a) where you have altered or modified the equipment, misused or misapplied the equipment, or the equipment has been subjected to any unusual, excessive or non-recommended use, service or handling (including as set out in this manual);
 - (b) where the equipment is not transported, stored, handled or used in accordance with any directions given by C-Dax (or the retailer) to you (including as set out in this manual);
 - (c) where the equipment:
 - (i) has been subject to neglect, accident or hireage, or the damage arises from fair wear and tear, battery damage or chemical attack;
 - (ii) has been built to a customer's specifications; or

- (iii) has been dismantled, repaired or serviced other than by an authorised service agent of C-Dax;
 - (d) for loss or damage caused by any factors beyond C-Dax's control; or
 - (e) for any loss of profit or revenue, or for any special, indirect, incidental or consequential damage, loss or injury of any kind suffered by you.
- 1.8 Where C-Dax elects to repair or replace the equipment it will use reasonable endeavours to do so as soon as practicable but will not be liable for any delay in doing so.
- 1.9 You agree that the transactions entered into between you and the retailer (and C-Dax) are for the purposes of trade and that, having regard to all relevant circumstances of the transactions, it is fair and reasonable that the provisions of the Consumer Guarantees Act 1993 (NZ) do not apply to those transactions to the fullest extent permitted by law.

OPERATING HINTS

Suction Filter

When mounted on a horizontal plane the U-filter is factory fitted (200 litre only) with what is called a “snorkel” device. This ensures that incoming fluid must rise to nearly the top of the filter body (expelling all air) before exiting the filter and continuing to the pump. Rapid priming is therefore expelled. On the 400 litre an inline filter is attached to the pump via a ‘Quadport’ fitting.

WARNING

DO NOT MOUNT THESE SPRAYERS ON TO AN ATV CARRIER FRAME!

CHEMICAL APPLICATION

As no control can be exercised over the use of the equipment or over weather, plant or soil conditions, or over the storage, handling, mixing, use or application of sprays or chemicals, In-Ex will not accept any liability for loss or damage (consequential or otherwise) arising directly or indirectly from the use of this equipment.

Chemical Advice

In-Ex or their agents cannot make recommendations or give advice as to the use of chemicals and cannot accept responsibility for any damage, injury or other consequence for disregarding this warning notice. Contact your chemical supplier for advice.

MAINTENANCE

Cleaning

Clean the sprayer regularly! After each use flush the unit out three times with fresh water. Use a neutralising agent for the second rinse.

CAUTION

To prevent damage to the sprayer and spray gun, drain the water from the sprayer and spray gun when there is a risk of frost.

Filters

Clean all filter screens regularly.

WARNING

If the pump has been mounted without the pump cover, all warranty is void.

NOTE

If the pump is observed to be leaking from between the motor and black pump body or from the motor itself, cease operation and have the pump serviced immediately. In-Ex and their distributors have a comprehensive parts inventory and capable staff. Because of the complications of the pump it may be best to get your In-Ex agent to post it back to the authorised service centre.

Pressure Switch Adjustment

CAUTION

Operating the pump with a higher than normal shut off pressure will shorten pump life.

The shut off pressure of the Flojet pump is adjustable by rotating a 2mm allen head on the top of the pressure switch assembly. To increase shut off pressure rotate adjustment screw clockwise, to decrease shut off pressure rotate adjustment screw anti clockwise.

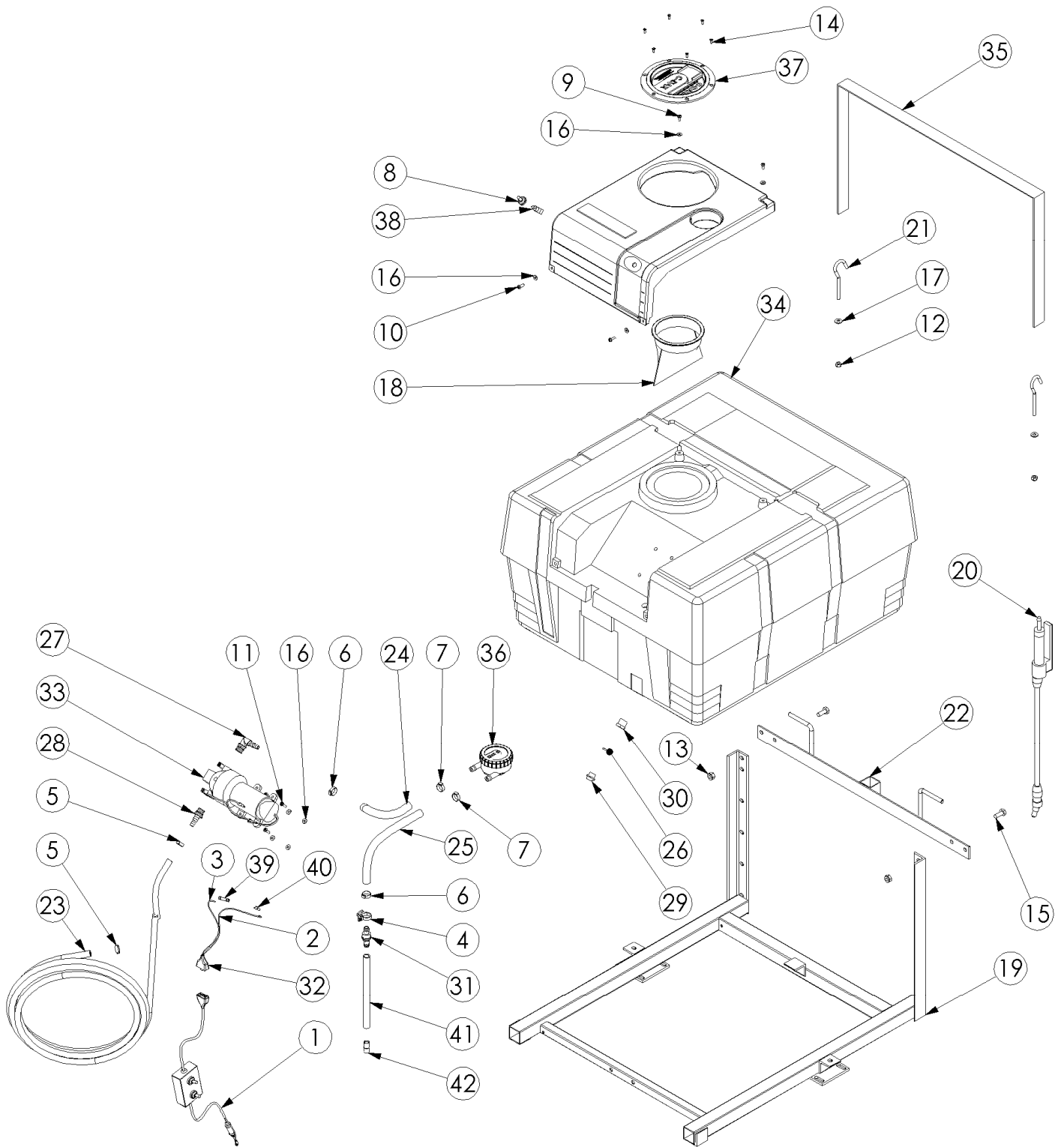
Increasing the shut-off pressure will not increase the flow or the spraying pressure.

TROUBLESHOOTING

In-Ex and their distributors have a comprehensive parts inventory and capable service staff. Repairs should only be undertaken by In-Ex, or an authorised In-Ex service centre.

Switch on but pump does not operate	1. Blown fuse	Check wiring and replace 15A fuse
	2. Pressure switch operated	Operate spray gun trigger
	3. Pressure switch failed	Replace pressure switch
	4. On/Off switch failed	Replace switch
Pump runs but does not stop.	1. Spray gun trigger open	Close trigger
	2. Air lock in pump	Operate spray gun trigger until all air is expelled from the pump and hose.
	3. Suction hose loose	Check and tighten all suction hose connections between pump inlet and tank.
	4. Dirt or spray residue in pump valves	Replace valves.
	5. Blocked suction filter mesh	Clean filter mesh.
Pump runs but pulses while pumping	1. Spraying pressure higher than the pump shut off pressure	Reduce spraying pressure by opening the adjustable spray tip.
	2. Pump shut off pressure too low	Increase pump shut off pressure. Refer maintenance.
Fluid leaks from drain holes in pump	1. Internal leak within pump head	Remove pump for servicing.

PARTS DIAGRAM (200 litre flat deck)

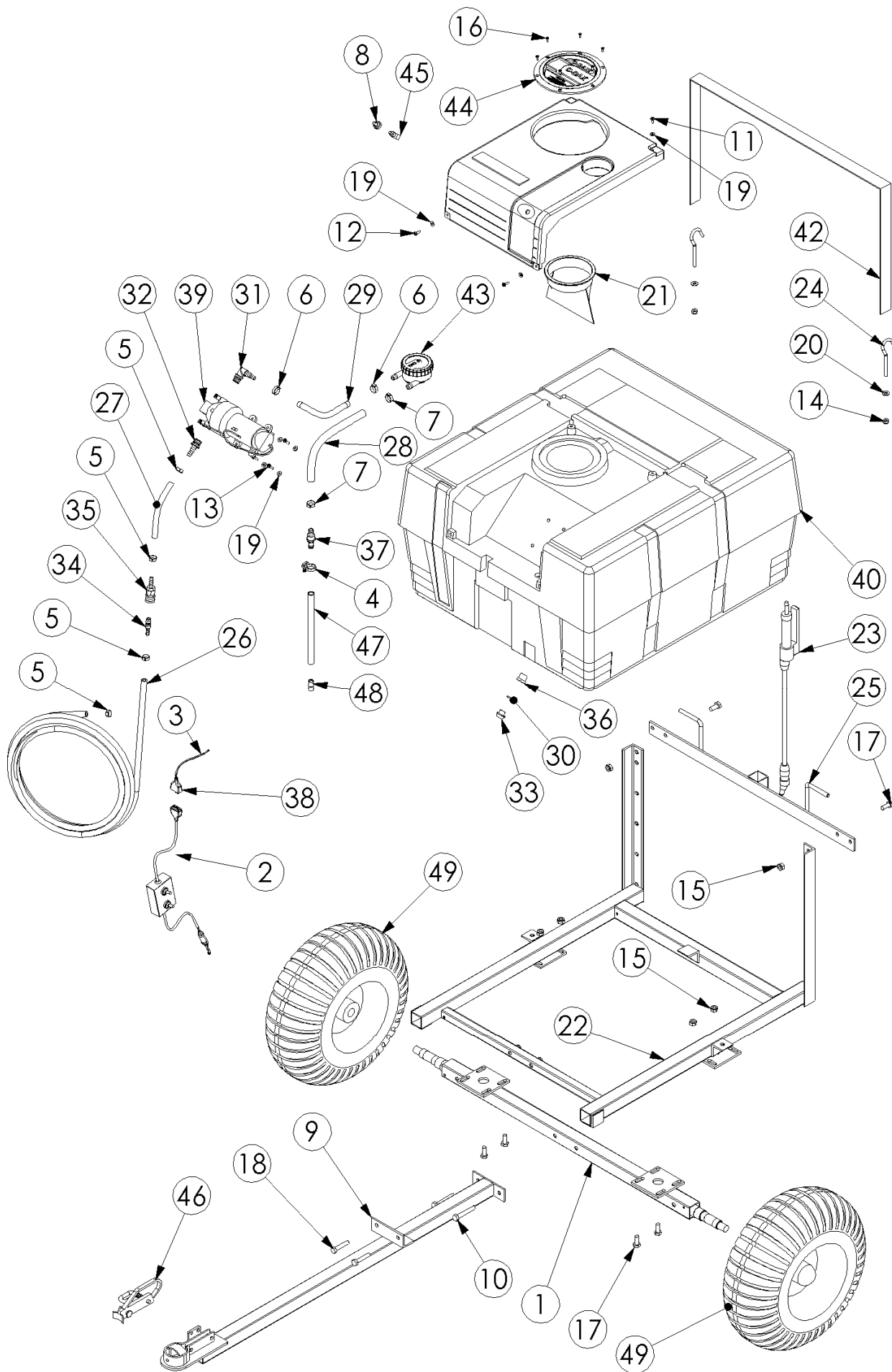


PARTS LIST (200 litre flat deck)

Item No.	QTY.	Part No.	Description
1	1	1500-3000	Cable-Electrical-Loom-1 Switch Box-3.0M
2	1	1500-7300	Cable-Electrical-Single Core-1mm ² -1000VDC-Red
3	1	1500-7310	Cable-Electrical-Single Core-1mm ² -1000VDC-Black
4	1	2000-0017	Clamp-Hose-Herbi-G-Ratchet-16.9<>19.1mm-Black-Nylon
5	2	2000-2014	Clamp-Hose-Oetiker-Single Ear Stepless-14.5<>7.0mm-S/S
6	2	2000-2017	Clamp-Hose-Oetiker-Single Ear Stepless-16.6<>19.8mm-S/S
7	2	2000-2019	Clamp-Hose-Oetiker-Single Ear Stepless-19.4<>22.6mm-S/S
8	1	2250-8200	Cover-Switch-Water Proof Boot-Toggle Lever-Rubber-Black
9	2	3110-0512	Fastener-Machine-Screw-Pan-M5x12-Pozi-ZP
10	2	3110-0516	Fastener-Machine-Screw-Pan-M5x16-Pozi-ZP
11	4	3110-0520	Fastener-Machine-Screw-Pan-M5x20-Pozi-ZP
12	2	3170-0008	Fastener-Nut-Nyloc-M8-ZP
13	2	3170-0010	Fastener-Nut-Nyloc-M10-ZP
14	6	3270-8012	Fastener-Self Tap-Screw-CSK-8Gx1/2"-Pozi-Stainless
15	2	3290-1025	Fastener-Set Screw-Hex-8.8 Grade-M10x25-ZP
16	8	3310-6005	Fastener-Washer-Flat-M5-ZP
17	2	3310-6008	Fastener-Washer-Flat-M8-ZP
18	1	3400-1110	Filter-Basket-D150-Mesh
19	1	3500-6900	Frame-Trailed/FlatDeck-In-Ex 200-GL
20	1	4000-6020	Hand Gun-Teejet-Trigger Jet X18-Shank 10mm
21	2	4085-1010	Hook-Bolt-Threaded-M8-Slimline-ZPG
22	1	4085-4050	Hook-Hose-In-Ex 200/400-ZP
23	1	4100-0008	Hose-Spray-Delivery-40 Bar-8.5mm ID-Yellow (10m)
24	1	4100-3013	Hose-Suction-Wire Reinforced-13mm ID-Clear Plastic(0.2m)
25	1	4100-0013	Hose-Spray-Delivery-40 Bar-13mm ID-Yellow(0.31m)
26	1	5450-2220	O'Ring-Imperial-1/8"x5/8"-N70
27	1	6200-2980	Pipe-Fitting-Flojet-Elbow-10 ShankxQuad Port Pump-Nylon
28	1	6200-3020	Pipe-Fitting-Flojet-Straight-10-13mm ShankxQuad Port Pump-Plastic
29	1	6200-6260	Pipe-Fitting-Plug-Thumb Screw-3/8BSPM-Black-Plastic
30	1	6200-7350	Pipe-Fitting-Reducer-1/2NPTMx3/8NPTF-Straight-Plastic
31	1	6200-9470	Pipe-Fitting-Thru Tank-Straight-13x13 Shankx1/2&1/4BSPM-Plastic
32	1	6250-3001	Plug-Electrical-2 Pin-Male-20 Amp-With Cover
33*	1	6800-5500	Pump-Flojet-High Flow-10.9LPM-Quad Ports
34	1	7500-4200	Rota-Tank & Pump Cover-200L-Spray-Natural/Red-MDPE-In-Ex
35	1	8410-9106	Strap-Web Sling-1320 Long-38mm-900KG-Reduced and Reversed-KS1 Material-Black
36	1	8427-3500	Sub-Filter Assembly-C-Dax U Filter
37	1	8427-6000	Sub-Lid & Ring Assembly-D150-In-Ex Vented-Nylon-Black
38	1	8450-2410	Switch-Electrical-Toggle-SPST-250V-16Amp
39	1	8790-4400	Terminal-Joiner-Crimp-Insulated Blue
40	2	8790-8020	Terminal-Spade-Female-6.3mm-Blue
41	1	8840-8413	Tube-Translucent-13MM-100PSI(0.26m)
42	1	8900-4600	Valve-Lid Vent-D150

Item 33*: Units manufactured prior to Jan 2015 fitted with pump 6800-5000, Pump-Flojet-Triplex-12 Volt-7.6LPM-Quad Ports.

PARTS DIAGRAM (200 litre trailed)

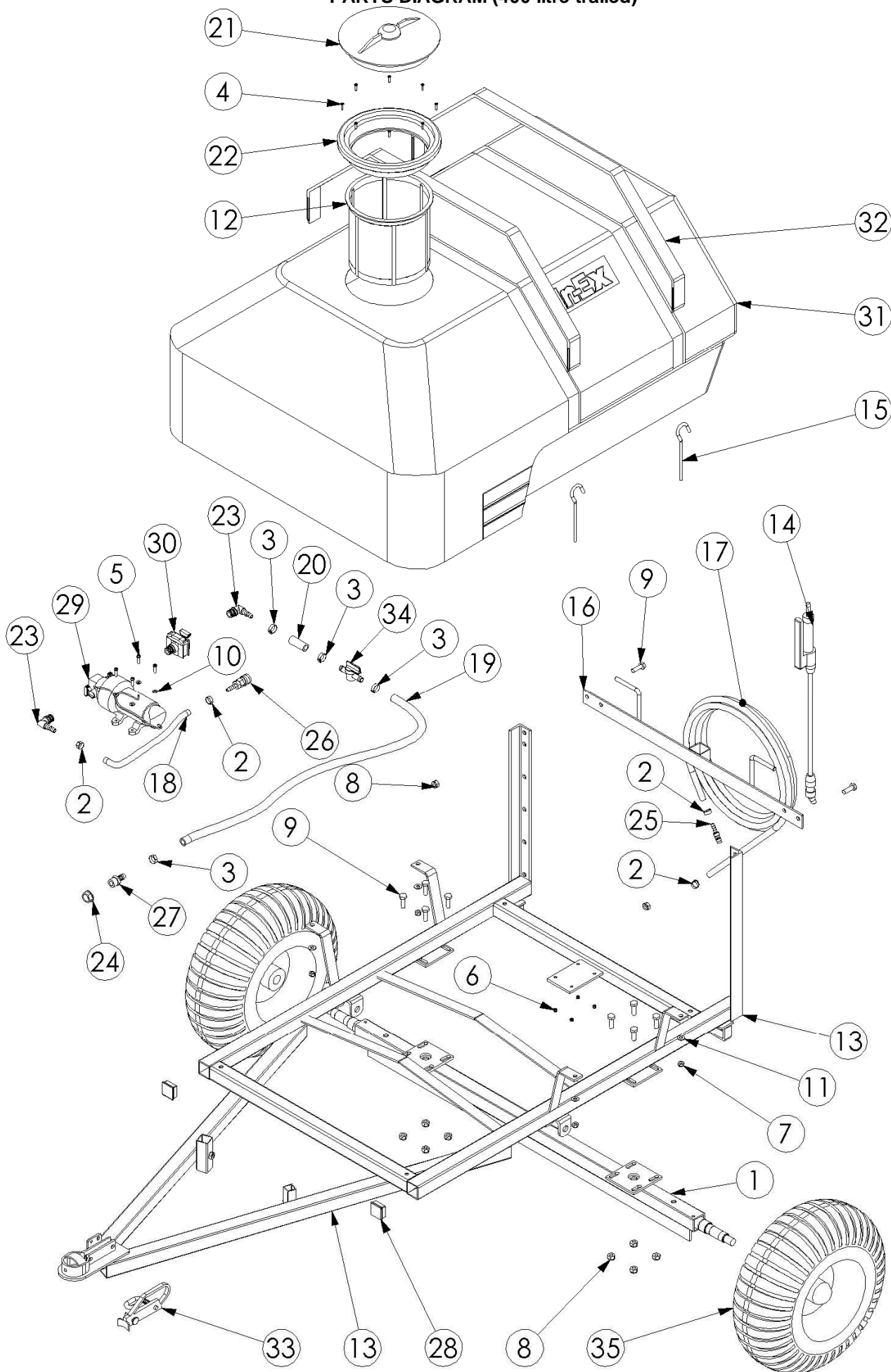


PARTS LIST (200 litre Trailed)

Item No.	QTY.	e9 part no	e9 description
1	1	1082-4380	Axle-In-Ex 200T-GL
2	1	1500-3000	Cable-Electrical-Loom-1 Switch Box-3.0M
3	1	1500-7400	Cable-Electrical-Twin Core-Double Insulated-15 Amp-26x.3mm-Black
4	1	2000-0017	Clamp-Hose-Herbi-G-Ratchet-16.9<>19.1mm-Black-Nylon
5	4	2000-2014	Clamp-Hose-Oetiker-Single Ear Stepless-14.5<>7.0mm-S/S
6	2	2000-2017	Clamp-Hose-Oetiker-Single Ear Stepless-16.6<>19.8mm-S/S
7	2	2000-2019	Clamp-Hose-Oetiker-Single Ear Stepless-19.4<>22.6mm-S/S
8	1	2250-8200	Cover-Switch-Water Proof Boot-Toggle Lever-Rubber-Black
9	1	2550-4200	Drawbar-In-Ex 200T-GL
10	2	2840-1065	Fastener-Bolt&Nut-Hex-8.8 Grade-M10x65-ZP
11	2	3110-0512	Fastener-Machine-Screw-Pan-M5x12-Pozi-ZP
12	2	3110-0516	Fastener-Machine-Screw-Pan-M5x16-Pozi-ZP
13	4	3110-0520	Fastener-Machine-Screw-Pan-M5x20-Pozi-ZP
14	2	3170-0008	Fastener-Nut-Nyloc-M8-ZP
15	10	3170-0010	Fastener-Nut-Nyloc-M10-ZP
16	6	3270-8012	Fastener-Self Tap-Screw-CSK-8Gx1/2"-Pozi-Stainless
17	6	3290-1025	Fastener-Set Screw-Hex-8.8 Grade-M10x25-ZP
18	2	3290-1050	Fastener-Set Screw-Hex-8.8 Grade-M10x50-ZP
19	8	3310-6005	Fastener-Washer-Flat-M5-ZP
20	2	3310-6008	Fastener-Washer-Flat-M8-ZP
21	1	3400-1110	Filter-Basket-D150-Mesh
22	1	3500-6900	Frame-Trailed/FlatDeck-In-Ex 200-GL
23	1	4000-6020	Hand Gun-Teejet-Trigger Jet X18-Shank 10mm
24	2	4085-1010	Hook-Bolt-Threaded-M8-Slimline-ZPG
25	1	4085-4050	Hook-Hose-In-Ex 200/400-ZP
26	1	4100-0008	Hose-Spray-Delivery-40 Bar-8.5mm ID-Yellow (10m)
27	1	4100-0008	Hose-Spray-Delivery-40 Bar-8.5mm ID-Yellow
28	1	4100-0013	Hose-Spray-Delivery-40 Bar-13mm ID-Yellow(0.31m)
29	1	4100-3013	Hose-Suction-Wire Reinforced-13mm ID-Clear Plastic (0.2m)
30	1	5450-2220	O'Ring-Imperial-1/8"x5/8"-N70
31	1	6200-2980	Pipe-Fitting-Flojet-Elbow-10 ShankxQuad Port Pump-Nylon
32	1	6200-3020	Pipe-Fitting-Flojet-Straight-10-13mm ShankxQuad Port Pump-Plastic
33	1	6200-6260	Pipe-Fitting-Plug-Thumb Screw-3/8BSPM-Black-Plastic
34	1	6200-7210	Pipe-Fitting-Quick Release-Male Connectorx8.5 Shank-Brass
35	1	6200-7250	Pipe-Fitting-Quick Release-Valve-Stopx8.5 Shank-Brass
36	1	6200-7350	Pipe-Fitting-Reducer-1/2NPTMx3/8NPTF-Straight-Plastic
37	1	6200-9470	Pipe-Fitting-Thru Tank-Straight-13x13 Shankx1/2&1/4BSPM-Plastic
38	1	6250-3001	Plug-Electrical-2 Pin-Male-20 Amp-With Cover
39*	1	6800-5500	Pump-Flojet-High Flow-10.9LPM-Quad Ports
40	1	7500-4200	Rota-Tank & Pump Cover-200L-Spray-Natural/Red-MDPE-In-Ex
41	1	7500-4200	Sub-Tank Plumbed-In-Ex 200L-Natural-With Red Cover
42	1	8410-9106	Strap-Web Sling-1320 Long-38mm-900KG-Reduced and Reversed-KS1 Material-Black
43	1	8427-3500	Sub-Filter Assembly-C-Dax U Filter
44	1	8427-6000	Sub-Lid & Ring Assembly-D150-In-Ex Vented-Nylon-Black
45	1	8450-2410	Switch-Electrical-Toggle-SPST-250V-16Amp
46	1	8800-3800	Tow-Coupling-Handle-Double Ended-1 78 x 50mm-ZP
47	1	8840-8413	Tube-Transluscent-13MM-100PSI(0.26m)
48	1	8900-4600	Valve-Lid Vent-D150
49	2	9200-4556	Wheel-Knobbly Turf-Bearing-22x12x8-4 Ply-CLAW

Item 39*: Units manufactured prior to Jan 2015 fitted with pump 6800-5000, Pump-Flojet-Triplex-12 Volt-7.6LPM-Quad Ports.

PARTS DIAGRAM (400 litre trailed)



PARTS LIST (400 litre Trailed)

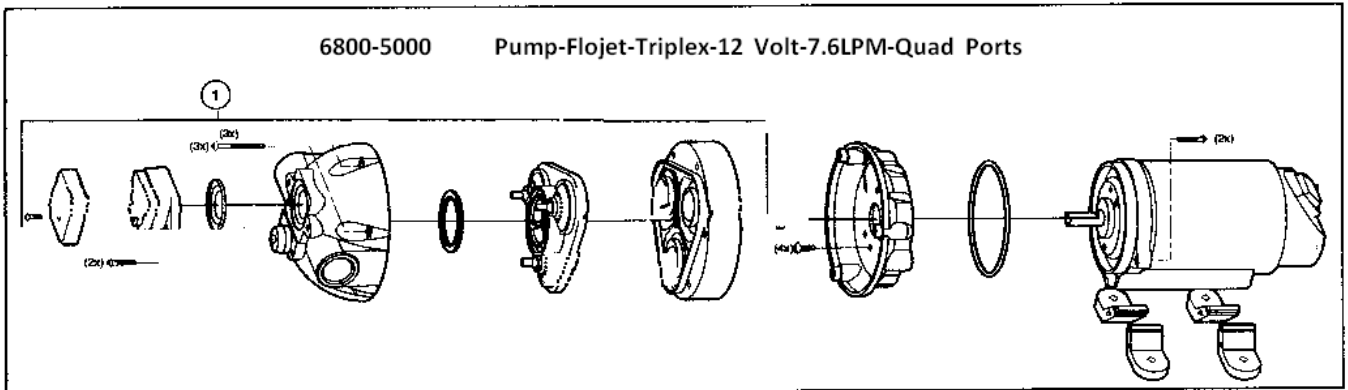
Item No.	QTY.	e9 part no	e9 description
1	1	1082-4384	Axle-In-Ex 400T-GL
2	4	2000-2014	Clamp-Hose-Oetiker-Single Ear Stepless-14.5<>7.0mm-S/S
3	4	2000-2017	Clamp-Hose-Oetiker-Single Ear Stepless-16.6<>19.8mm-S/S
4	8	3070-0300	Fastener-Machine-Screw-CSK-8Gx3/4-Pozi-Stainless
5	4	3110-0520	Fastener-Machine-Screw-Pan-M5x20-Pozi-ZP
6	4	3170-0005	Fastener-Nut-Nyloc-M5-ZP
7	4	3170-0008	Fastener-Nut-Nyloc-M8-ZP
8	10	3170-0010	Fastener-Nut-Nyloc-M10-ZP
9	10	3290-1030	Fastener-Set Screw-Hex-8.8 Grade-M10x30-ZP
10	4	3310-6005	Fastener-Washer-Flat-M5-ZP
11	4	3310-6008	Fastener-Washer-Flat-M8-ZP
12	1	3400-1120	Filter-Basket-D255-204x185x240mm
13	1	3500-6600	Frame-Trailed-F6-400L-GL
14	1	4000-6020	Hand Gun-Teejet-Trigger Jet X18-Shank 10mm
15	4	4085-1000	Hook-Bolt-Threaded-M8-Boxmate-ZPG
16	1	4085-4050	Hook-Hose-In-Ex 200/400-GL
17	1	4100-0008	Hose-Spray-Delivery-40 Bar-8.5mm ID-Yellow (10m)
18	1	4100-0008	Hose-Spray-Delivery-40 Bar-8.5mm ID-Yellow
19	1	4100-1013	Hose-Spray-Delivery-7 Bar-13mm ID-PVC
20	1	4100-1013	Hose-Spray-Delivery-7 Bar-13mm ID-PVC
21	1	5000-1600	Lid-Tank-D255 Bare-Vented-Black-Nylon
22	1	5000-1650	Lid-Tank-D255-Ring Only-Incl Gasket
23	2	6200-2980	Pipe-Fitting-Flojet-Elbow-10 ShankxQuad Port Pump-Nylon
24	1	6200-5400	Pipe-Fitting-Nut-Back-1/2BSP-Plastic
25	1	6200-7210	Pipe-Fitting-Quick Release-Male Connectorx8.5 Shank-Brass
26	1	6200-7250	Pipe-Fitting-Quick Release-Valve-Stopx8.5 Shank-Brass
27	1	6200-8310	Pipe-Fitting-Straight-13 Shankx1/2BSPM-Plastic
28	2	6250-8620	Plug-Tube End-Square-1 1/2"x1 1/2"-Black-Plastic
29*	1	6800-5500	Pump-Flojet-High Flow-10.9LPM-Quad Ports
30	1	6800-5150	Pump-Flojet-Triplex-Filter-In Line-Quad Ports
31	1	7500-4352	Rota-Tank-400L-Spray-Natural-MDPE-Horizontal
32	2	8410-9104	Strap-Web Sling-1200 Long-38mm-900KG-Reduced and Reversed-KS1 Material-Black
33	1	8800-3800	Tow-Coupling-Handle-Double Ended-1 78 x 50mm-ZP
34	1	8900-8410	Valve-Tap-Inline-13 Shankx13 Shank-Black-Nylon
35	2	9200-4556	Wheel-Knobbly Turf-Bearing-22x12x8-4 Ply-CLAW

Item 29*: Units manufactured prior to Jan 2015 fitted with pump 6800-5000, Pump-Flojet-Triplex-12 Volt-7.6LPM-Quad Ports.

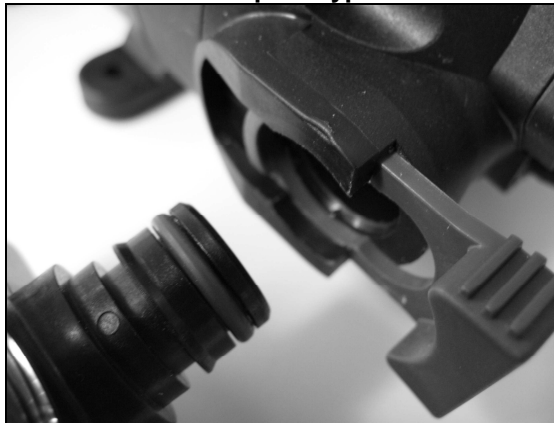
FLOJET SPRAY PUMP RELACEMENT PARTS

The following replacement parts for the 12V Flojet 7.6 L/Min pump are available from any C-Dax dealer:
This diagram is for 7.6L/min pump only, units manufactured prior to Jan 2015.

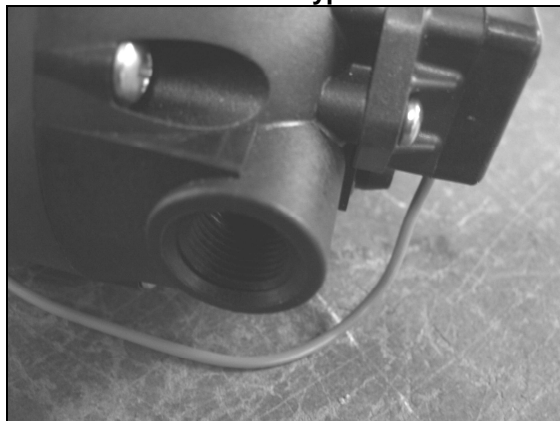
PLEASE NOTE THAT NO REPLACEMENT PARTS ARE AVAILABLE FOR 10.9L PUMP



NOTE: PLEASE SELECT THE CORRECT HOSE CONNECTION TYPE FOR YOUR PUMP
Quadport Type:



Screw Type:



ITEM	PART NO.	DESCRIPTION
1	6800-5170	Pumphead Kit (includes pressure switch) <u>To suit Screw Type</u>
1	6800-5160	Pumphead Kit (includes pressure switch) <u>To Suit Quadport Type</u>
	6800-5000	Replacement Pump <u>Quadport Type</u>