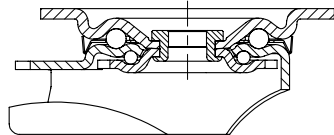
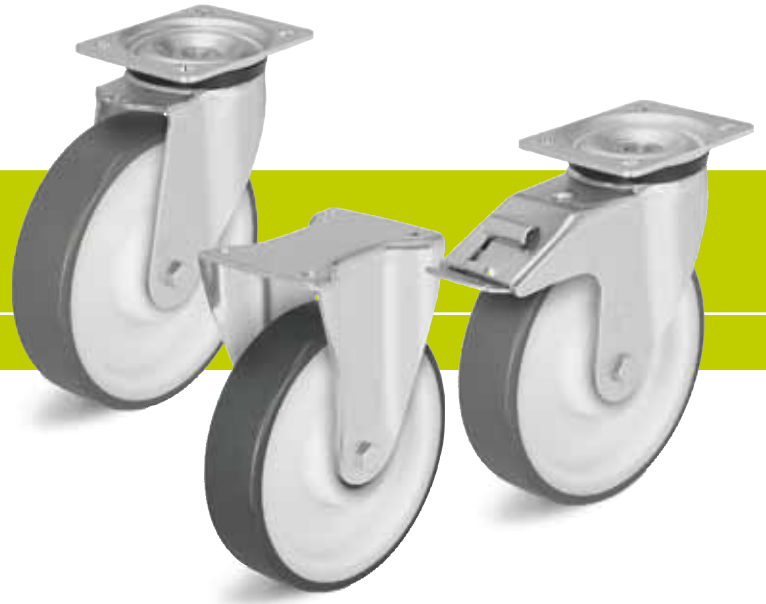


Series: LK-POTH, BK-POTH, BH-POTH

Pressed steel castors, medium heavy duty brackets, with top plate fitting, wheel with thermoplastic polyurethane tread

200 - 600 kg

RoHS



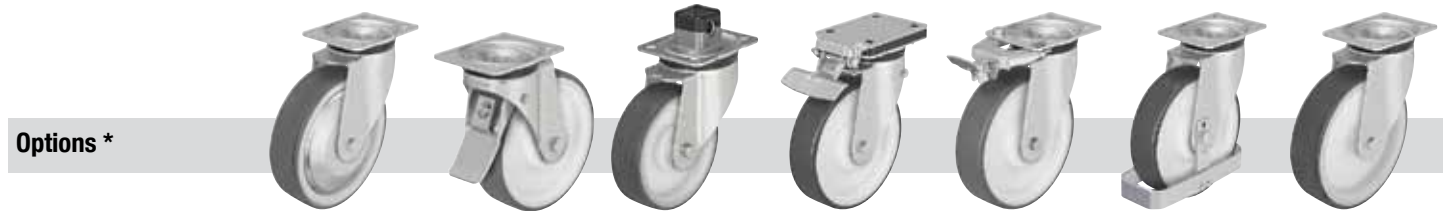
Brackets: LK/BK/BH series - Made of heavy pressed steel, swivel bracket with double ball bearing in the swivel head, strong central kingpin (wheel-Ø 150-200 mm), swivel head seals. The special Blickle dynamic riveting process of the swivel head results in minimal swivel head play and smooth rolling characteristics with an increased service life achieved by the work hardening of the ball race grooves. Bolted wheel axle. Zinc-plated, blue-passivated, Cr6-free. Bracket overview: Page 66 Top plate drawings: Page 77 Wheel and swivel head 'stop-fix' brake: Page 80

Wheels: POTH series - Tread: Made of high-quality thermoplastic polyurethane, 94° shore A, dark grey, non-marking, non-staining. Wheel centre: Made of high-quality, impact-resistant nylon, natural white. Bearing types: Plain bore, roller bearing, two pressed-in ball bearings or a centrally encapsulated ball bearing (C). Detailed description: Page 213 and 47



Swivel castors	Fixed castors	Swivel castors with 'stop-fix' brake	Wheel Ø [mm]	Wheel width [mm]	Load capacity [kg]	Bearing type	Total height [mm]	Plate size [mm]	Bolt hole spacing [mm]	Bolt hole Ø [mm]	Offset swivel castor [mm]
LK-POTH 75G	BK-POTH 75G	LK-POTH 75G-FI	75	37	200	Plain bore	108	100 x 85	80 x 60	9	40
LK-POTH 75R	BK-POTH 75R	LK-POTH 75R-FI	75	37	200	Roller bearing	108	100 x 85	80 x 60	9	40
LK-POTH 100G-1	BK-POTH 100G-1	LK-POTH 100G-1-FI	100	35	300	Plain bore	130	100 x 85	80 x 60	9	45
LK-POTH 100R-1	BK-POTH 100R-1	LK-POTH 100R-1-FI	100	35	300	Roller bearing	130	100 x 85	80 x 60	9	45
LK-POTH 100K-1	BK-POTH 100K-1	LK-POTH 100K-1-FI	100	35	300	Ball bearing (C)	130	100 x 85	80 x 60	9	45
LK-POTH 100G-3	BK-POTH 100G-3	LK-POTH 100G-3-FI	100	35	300	Plain bore	130	140 x 110	105 x 75-80	11	45
LK-POTH 100R-3	BK-POTH 100R-3	LK-POTH 100R-3-FI	100	35	300	Roller bearing	130	140 x 110	105 x 75-80	11	45
LK-POTH 100K-3	BK-POTH 100K-3	LK-POTH 100K-3-FI	100	35	300	Ball bearing (C)	130	140 x 110	105 x 75-80	11	45
LK-POTH 125G-1	BK-POTH 125G-1	LK-POTH 125G-1-FI	125	40	350	Plain bore	155	100 x 85	80 x 60	9	48
LK-POTH 125R-1	BK-POTH 125R-1	LK-POTH 125R-1-FI	125	40	350	Roller bearing	155	100 x 85	80 x 60	9	48
LK-POTH 125K-1	BK-POTH 125K-1	LK-POTH 125K-1-FI	125	40	350	Ball bearing (C)	155	100 x 85	80 x 60	9	48
LK-POTH 125G-3	BK-POTH 125G-3	LK-POTH 125G-3-FI	125	40	350	Plain bore	155	140 x 110	105 x 75-80	11	48
LK-POTH 125R-3	BK-POTH 125R-3	LK-POTH 125R-3-FI	125	40	350	Roller bearing	155	140 x 110	105 x 75-80	11	48
LK-POTH 125K-3	BK-POTH 125K-3	LK-POTH 125K-3-FI	125	40	350	Ball bearing (C)	155	140 x 110	105 x 75-80	11	48
LK-POTH 150G	BH-POTH 150G	LK-POTH 150G-FI	150	45	500	Plain bore	197	140 x 110	105 x 75-80	11	63
LK-POTH 150R	BH-POTH 150R	LK-POTH 150R-FI	150	45	500	Roller bearing	197	140 x 110	105 x 75-80	11	63
LK-POTH 150K	BH-POTH 150K	LK-POTH 150K-FI	150	45	500	Ball bearing	197	140 x 110	105 x 75-80	11	63
LK-POTH 160K	BH-POTH 160K	LK-POTH 160K-FI	160	45	550	Ball bearing	202	140 x 110	105 x 75-80	11	63
LK-POTH 200G	BH-POTH 200G	LK-POTH 200G-FI	200	50	600	Plain bore	245	140 x 110	105 x 75-80	11	65
LK-POTH 200R	BH-POTH 200R	LK-POTH 200R-FI	200	50	600	Roller bearing	245	140 x 110	105 x 75-80	11	65
LK-POTH 200K	BH-POTH 200K	LK-POTH 200K-FI	200	50	600	Ball bearing	245	140 x 110	105 x 75-80	11	65

For stainless steel versions refer to page 368



Options *

	With pressed steel thread guard, zinc-plated	With 'stop-top' brake	With central braking system 'central-stop'	With 'ideal-stop' brake ttl. height +17mm **	Directional lock (retro-fit) 1 x 360°	With steel foot guard	With stainless steel axle tube in the wheel hub
Technical description page	84	80	81	80	83	84	85
Product code suffix	-FA	-ST	-CS11	-IS	refer to ***	-FS	-XA
Available for	wheel Ø 100-200 mm	all sizes	wheel Ø 100-125 mm	Ø 100, 125, 160, 200 with plate 140x110	for wheel Ø and plate dimensions refer to***	upon request	plain bore versions upon request

* **Additional options:** Stainless steel roller bearing (-XR) or stainless steel ball bearing (-XK) in the wheel hub or wheel with additional ball bearing seals (-KD), available upon request
 ** Matching synthetic adapter plate for total height compensation for swivel and fixed castors without 'ideal-stop' brake: **Product code AP3**
 *** **RI-05.01** for wheel Ø 75-125 mm with plate 100x85 mm, **RI-03.03** for wheel Ø 100-125 mm with plate 140x110 mm, **RI-05.03** for wheel Ø 150-200 mm (only for swivel castors without brake)