

ACCESSORIES

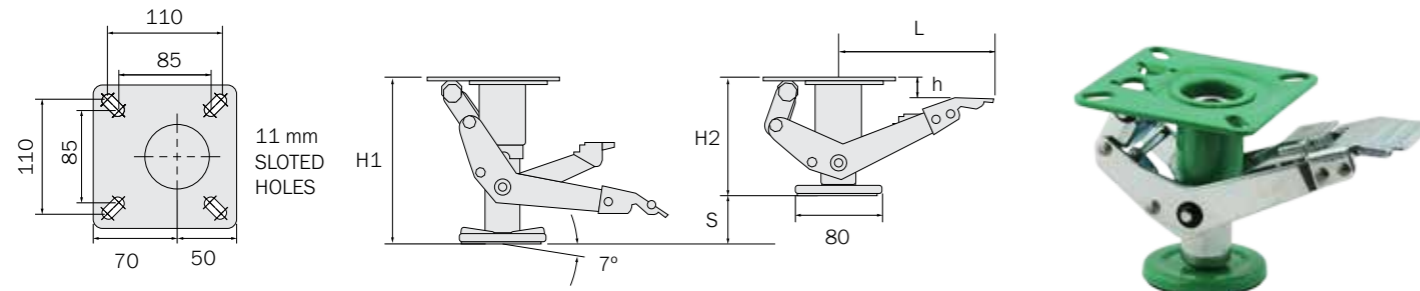
FOR PREMIUM ACCESSORIES REFER TO PAGE 77

TROLLEY LOCKS

TO STOP TROLLEY MOVEMENT

FLOOR LOCKS - LIFT UP & HOLD

ITEM CODE	FOR CASTOR SIZE	MOUNT HEIGHT (mm)	H1 (mm)	H2 (mm)	S (mm)	L (mm)	H (mm)	UNIT WEIGHT (KGS)	LOAD RATING (KGS)
FL900 - 2	4" / 100	148	155	125	30	142	1.5	1.5	200
FL900 - 4	6" / 150	204	211	168	36	142	1.5	1.75	300
FL900 - 6	8" / 200	248	255	212	36	142	3.5	1.9	300



TRUCK LOCKS - FRICTION HOLD

ITEM CODE	FULLY EXTENDED HEIGHT (mm)	RETRACTED HEIGHT (mm)	TOP PLATE (mm)	BOLT HOLE CENTRES (mm)	ATTACHING BOLT SIZE (mm)
TFL - HD	205	170	152 X 114	127 X 63.5	12
LTL - SW - L	381	346	165 X 114	TO BE DRILLED ON SITE	N/A
LTL - SW - R	381	346	165 X 114	TO BE DRILLED ON SITE	N/A



BUFFERS

NON-MARKING ROUND LEG

- » Made from hard wearing thermoplastic elastomer
- » Solid non marking TPR material
- » Shock / impact absorbing

ITEM CODE	DESCRIPTION/ MOUNTING	DIAMETER X WIDTH (mm)	BORE (mm)
TDC225-RD	TPE CASTOR DRESS CAP BUFFER / ROUND	94 X 15 / 9	22.5 RD
TDC255-SQ	TPE CASTOR DRESS CAP BUFFER / ROUND	94 X 15 / 9	25.5
TDC325-RD	TPE CASTOR DRESS CAP BUFFER / ROUND	94 X 15 / 9	32.5
TDC255-SQ	TPE CASTOR DRESS CAP BUFFER / SQUARE	94 X 15 / 9	25.5 SQ



BUMPERS

NON-MARKING CORNER

- » Non marking grey reinforced polyurethane
- » Internal steel support
- » External dimension 100 x 100 x 25 mm
- » Hole dimension 4mm x 6 mm

ITEM CODE - PCB10010020

ITEM CODE	DESCRIPTION/ MOUNTING	EXTERNAL DIMENSIONS (mm)	INTERNAL DIMENSIONS (MM)
PCB10010020	GREY TPU, STEEL REINFORCED	100X100X25	80X80

