

Product Data Sheet



FF 150

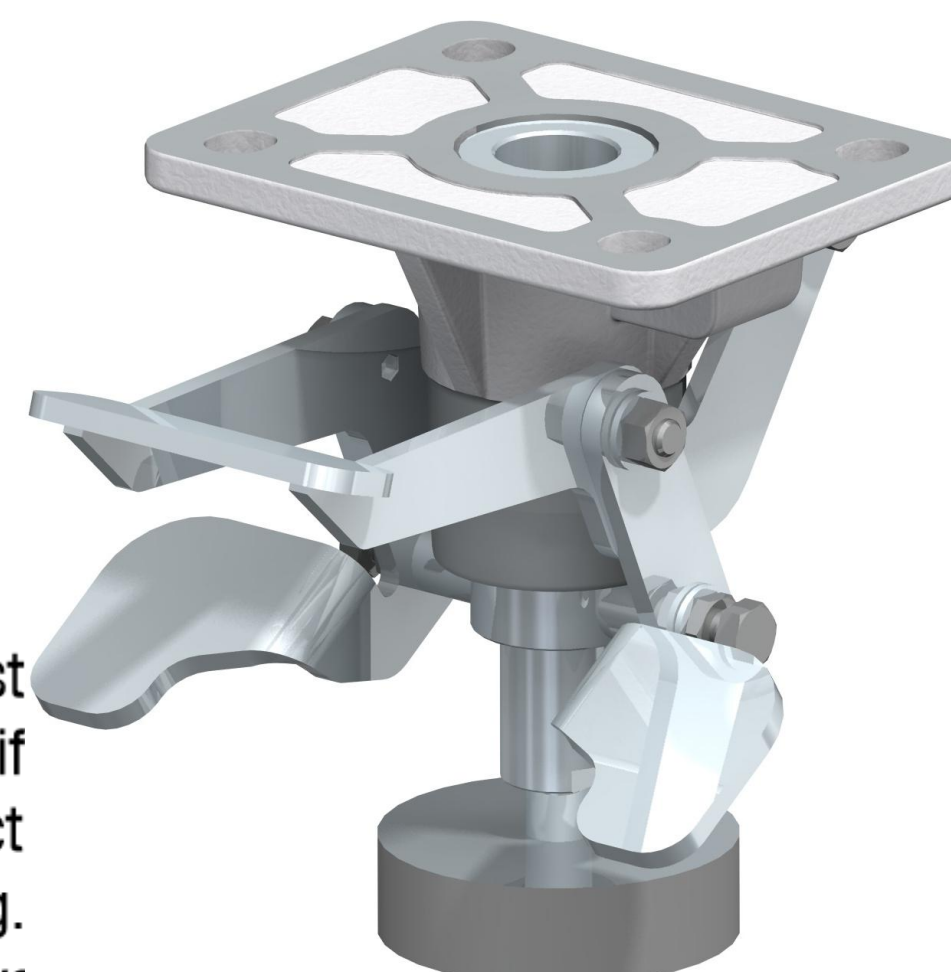
EAN 4047526111366

ID 752474


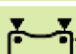

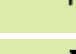

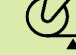
Truck lock

Option:

Truck locks can be fitted to transport equipment, enabling them to be locked in their rest position. By operating the pedal the transport equipment is held in place without being lifted. When operated the truck lock deflects by approx. 10 mm. The maximum surface contact pressure in combination with the respectively suitable castors amounts to approx. 60 kg. Truck locks can be combined with LH, LO and LS castor series. Zinc-plated, blue-passivated, Cr6-free.



Technical data

| | | |
|-------------------|---|-------------|
| Plate size |  | 140 x 110 |
| Bolt hole spacing |  | 105 x 75-80 |
| Bolt hole Ø |  | 12,3 |
| Total height |  | 170 mm (H) |
| Max. total height |  | 208 mm (h) |
| unit weight |  | 3,6 kg |