

Extension Pole for 2" square pole 14' tall

When adding the extension piece to your existing gourd rack the best time to do this is during the off season. Remove your pole from the ground stake a place the pole on an up-turned 5 gallon bucket.

Step 1 You will need to remove your top perch rods by backing out the set screws (don't loose them) that hold your rods in place. I have provided the allen wrench needed for this step. Also undo the lock nut from your rope assembly and remove the eyebolt assembly from the pole and remove the black cap by popping it out with a flat head screw driver.



Top perch rods inserted into ext. piece

Remember that your rope needs to be properly oriented. See photos.

Step 4. Stand your pole up and slide the pole back over the ground stake.

Note, that the rope that came with your 14 foot pole is 45 feet long. When lowering your hub assembly there is a good chance your rope will be short. Should this be the case simply tie a small piece of rope the length you need to the end of your rope.

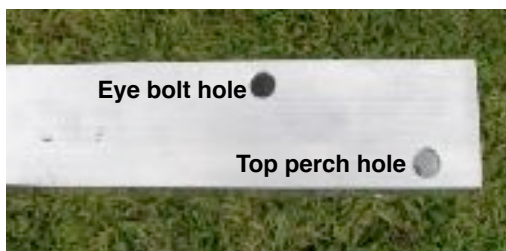


Slide the Extension piece into the top

Step 2. Pole assembly: Once all the parts are removed from the top section of the 14 foot pole, slide the extension piece into the top of the pole and lay the pole on an overturned 5-gallon bucket (or similar object). The 3 pole pieces are held in place by friction and gravity.



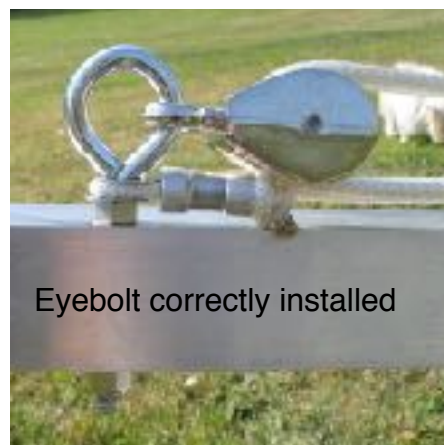
Correct orientation of Pulley and rope



Eye bolt hole

Top perch hole

Step 3 Basically you are taking the parts you removed and re-inserting them into their appropriate holes in the extension piece. Start by re inserting the top perch rods, re use your set screws and tighten. Place the black cap into the top of the pole. Lastly re insert the eyebolt into the pole.



Eyebolt correctly installed

Customer Assumes All Liability when an extension piece is added to a 16' tall pole.