

ZEDRIC'S ENTREES



Arroz Con Pollo Small

Nutrition Facts	
1 serving per container	
Serving size	(298g)
Amount Per Serving	
Calories	320
% Daily Value*	
Total Fat 6g	8%
Saturated Fat 1g	5%
Trans Fat 0g	
Cholesterol 70mg	23%
Sodium 260mg	11%
Total Carbohydrate 42g	15%
Dietary Fiber 5g	18%
Total Sugars 3g	
Includes 0g Added Sugars	0%
Sugar Alcohol 0g	
Protein 32g	
Vitamin D 0mcg	0%
Calcium 50mg	4%
Iron 3mg	15%
Potassium 450mg	10%

* The % Daily Value (DV) tells you how much a nutrient in a serving of food contributes to a daily diet. 2,000 calories a day is used for general nutrition advice.

Ingredients: Spanish Rice Mix With Vegetables (Rice For Spanish Rice (Buttered Jasmine Rice Cooked (Water, Jasmine Long Grain White Rice - Golden Star, Butter (Cream, Natural Flavor))), Arroz Con Pollo Bulk (Onions, Yellow, Tomatoes, Crushed, Julienne Carrots, Peppers, Bell, Red, Poblano Pepper, Chopped Garlic, Chicken Base, Gluten Free, Chili Powder, Ground Cumin)), 4 Oz Baked Chicken Breast (Chicken), Peas, Green, Frozen, Cooked, Boiled, Drained, Without Salt

Contains: Milk

Zedric's LLC, 9873 IH-10 West, San Antonio, TX 78230

Manufactured In A Facility That Also Processes: Milk, Egg, Wheat, Peanuts, Soy, Sesame, Cod, Salmon, Almond, Pecan, Mahi, Pine Nuts



Arroz Con Pollo Regular

Nutrition Facts	
1 serving per container	
Serving size	(482g)
Amount Per Serving	
Calories	520
% Daily Value*	
Total Fat 10g	13%
Saturated Fat 2g	10%
Trans Fat 0g	
Cholesterol 140mg	47%
Sodium 410mg	18%
Total Carbohydrate 59g	21%
Dietary Fiber 7g	25%
Total Sugars 4g	
Includes 0g Added Sugars	0%
Sugar Alcohol 0g	
Protein 59g	
Vitamin D 0mcg	0%
Calcium 80mg	6%
Iron 4.7mg	25%
Potassium 650mg	15%

* The % Daily Value (DV) tells you how much a nutrient in a serving of food contributes to a daily diet. 2,000 calories a day is used for general nutrition advice.

Ingredients: Spanish Rice Mix With Vegetables (Rice For Spanish Rice (Buttered Jasmine Rice Cooked (Water, Jasmine Long Grain White Rice - Golden Star, Butter (Cream, Natural Flavor))), Arroz Con Pollo Bulk (Onions, Yellow, Tomatoes, Crushed, Julienne Carrots, Peppers, Bell, Red, Poblano Pepper, Chopped Garlic, Chicken Base, Gluten Free, Chili Powder, Ground Cumin)), 4 Oz Baked Chicken Breast (Chicken), Peas, Green, Frozen, Cooked, Boiled, Drained, Without Salt

Contains: Milk

Zedric's LLC, 9873 IH-10 West, San Antonio, TX 78230

Manufactured In A Facility That Also Processes: Milk, Egg, Wheat, Peanuts, Soy, Sesame, Cod, Salmon, Almond, Pecan, Mahi, Pine Nut



Bacon Ranch Chicken Small

Nutrition Facts	
1 serving per container	
Serving size	(279g)
Amount Per Serving	
Calories	220
% Daily Value*	
Total Fat 6g	8%
Saturated Fat 2.5g	13%
Trans Fat 0g	
Cholesterol 80mg	27%
Sodium 830mg	36%
Total Carbohydrate 5g	2%
Dietary Fiber 1g	4%
Total Sugars 2g	
Includes 0g Added Sugars	0%
Sugar Alcohol 0g	
Protein 33g	
Vitamin D 0mcg	0%
Calcium 120mg	10%
Iron 1.4mg	8%
Potassium 10mg	0%

* The % Daily Value (DV) tells you how much a nutrient in a serving of food contributes to a daily diet. 2,000 calories a day is used for general nutrition advice.

Ingredients: Sautéed Zucchini Cooked (Zucchini, Raw, Organic, With Skin, Kosher Salt, Pepper, Black), 4 Oz Bacon Ranch Chicken Breast (Chicken, Cheese, Mozzarella, Part Skim Milk, Applegate Organics Uncured Reduced Sodium Sunday Bacon, RANCH SEASONING MIX (MALTODEXTRIN, BUTTERMILK, SALT, MONOSODIUM GLUTAMATE, LACTIC ACID, DRIED GARLIC, DRIED ONION, SPICES, CITRIC ACID, LESS THAN 1% OF: CALCIUM STEARATE, ARTIFICIAL FLAVORS, XANTHAN GUM, NATURAL FLAVORS), Onions, Green)

Contains: Milk

Zedric's LLC, 9873 IH-10 West, San Antonio, TX 78230

Manufactured In A Facility That Also Processes: Milk, Egg, Wheat, Peanuts, Soy, Sesame, Cod, Salmon, Almond, Pecan, Mahi, Pine Nut



Bacon Ranch Chicken Regular

Nutrition Facts	
1 serving per container	
Serving size	(473g)
Amount Per Serving	
Calories	420
% Daily Value*	
Total Fat 13g	17%
Saturated Fat 5g	25%
Trans Fat 0g	
Cholesterol 160mg	53%
Sodium 1460mg	63%
Total Carbohydrate 7g	3%
Dietary Fiber 2g	7%
Total Sugars 3g	
Includes 0g Added Sugars	0%
Sugar Alcohol 0g	
Protein 65g	
Vitamin D 0.1mcg	0%
Calcium 230mg	15%
Iron 2.5mg	15%
Potassium 20mg	0%

* The % Daily Value (DV) tells you how much a nutrient in a serving of food contributes to a daily diet. 2,000 calories a day is used for general nutrition advice.

Ingredients: 4 Oz Bacon Ranch Chicken Breast (Chicken, Cheese, Mozzarella, Part Skim Milk, Applegate Organics Uncured Reduced Sodium Sunday Bacon, RANCH SEASONING MIX (MALTODEXTRIN, BUTTERMILK, SALT, MONOSODIUM GLUTAMATE, LACTIC ACID, DRIED GARLIC, DRIED ONION, SPICES, CITRIC ACID, LESS THAN 1% OF: CALCIUM STEARATE, ARTIFICIAL FLAVORS, XANTHAN GUM, CARBOXYMETHYLCELLULOSE, GUAR GUM, NATURAL FLAVORS), Onions, Green), Sautéed Zucchini Cooked (Zucchini, Raw, Organic, With Skin, Kosher Salt, Pepper, Black)

Contains: Milk

Zedric's LLC, 9873 IH-10 West, San Antonio, TX 78230

Manufactured In A Facility That Also Processes: Milk, Egg, Wheat, Peanuts, Soy, Sesame, Cod, Salmon, Almond, Pecan, Mahi, Pine Nuts

ZEDRIC'S ENTREES



Baked Cod with Compound Cajun Butter Small

Nutrition Facts	
1 serving per container	
Serving size	(298g)
Amount Per Serving	
Calories	320
% Daily Value*	
Total Fat 14g	18%
Saturated Fat 8g	40%
Trans Fat 0.5g	
Cholesterol 90mg	30%
Sodium 840mg	37%
Total Carbohydrate 36g	13%
Dietary Fiber 2g	7%
Total Sugars 1g	
Includes 0g Added Sugars	0%
Sugar Alcohol 0g	
Protein 22g	
Vitamin D 0.6mcg	2%
Calcium 50mg	4%
Iron 0.6mg	4%
Potassium 420mg	10%

* The % Daily Value (DV) tells you how much a nutrient in a serving of food contributes to a daily diet. 2,000 calories a day is used for general nutrition advice.

Ingredients: Cod Portion (COOKED) (Fish, Cod, Pacific, Raw, Kosher Salt, Pepper, Black), Jasmine Rice Pilaf (Buttered Jasmine Rice Cooked (Water, Jasmine Long Grain White Rice - Golden Star, Butter (Cream, Natural Flavor)), Jasmine Rice Pilaf (Red Onion, Mushrooms, White, Raw, Onions, Green, Chopped Garlic, Kosher Salt, Pepper, Black)), Steamed Broccoli & Cauliflower (Buttered Broccoli (Broccoli, Butter (Cream, Natural Flavor), Pepper, Black), Steamed Cauliflower (Cauliflower), Cheese, Parmesan, Shredded, Chopped Garlic), Blackened Compound Butter (Butter (Cream, Natural Flavor), Chef Paul Prudhomme's Blackened Redfish Magic Seasoning Blends)

Contains: Milk, Cod

Zedric's LLC, 9873 IH-10 West, San Antonio, TX 78230

Manufactured In A Facility That Also Processes: Milk, Egg, Wheat, Peanuts, Soy, Sesame, Cod, Salmon, Almond, Pecan, Mahi, Pine Nut



Baked Cod with Compound Cajun Butter Regular

Nutrition Facts	
1 serving per container	
Serving size	(514g)
Amount Per Serving	
Calories	570
% Daily Value*	
Total Fat 29g	37%
Saturated Fat 17g	85%
Trans Fat 1g	
Cholesterol 180mg	60%
Sodium 1650mg	72%
Total Carbohydrate 48g	17%
Dietary Fiber 3g	11%
Total Sugars 3g	
Includes 0g Added Sugars	0%
Sugar Alcohol 0g	
Protein 42g	
Vitamin D 1.2mcg	6%
Calcium 100mg	8%
Iron 1.2mg	6%
Potassium 840mg	20%

* The % Daily Value (DV) tells you how much a nutrient in a serving of food contributes to a daily diet. 2,000 calories a day is used for general nutrition advice.

Ingredients: Cod Portion (COOKED) (Fish, Cod, Pacific, Raw, Kosher Salt, Pepper, Black), Jasmine Rice Pilaf (Buttered Jasmine Rice Cooked (Water, Jasmine Long Grain White Rice - Golden Star, Butter (Cream, Natural Flavor)), Jasmine Rice Pilaf (Red Onion, Mushrooms, White, Raw, Onions, Green, Chopped Garlic, Kosher Salt, Pepper, Black)), Steamed Broccoli & Cauliflower (Buttered Broccoli (Broccoli, Butter (Cream, Natural Flavor), Pepper, Black), Steamed Cauliflower (Cauliflower), Cheese, Parmesan, Shredded, Chopped Garlic), Blackened Compound Butter (Butter (Cream, Natural Flavor), Chef Paul Prudhomme's Blackened Redfish Magic Seasoning Blends)

Contains: Milk, Cod

Zedric's LLC, 9873 IH-10 West, San Antonio, TX 78230

Manufactured In A Facility That Also Processes: Milk, Egg, Wheat, Peanuts, Soy, Sesame, Cod, Salmon, Almond, Pecan, Mahi, Pine Nut



Beef Taco Skillet Small

Nutrition Facts	
1 serving per container	
Serving size	(222g)
Amount Per Serving	
Calories	230
% Daily Value*	
Total Fat 9g	12%
Saturated Fat 4g	20%
Trans Fat 0g	
Cholesterol 55mg	18%
Sodium 360mg	16%
Total Carbohydrate 15g	5%
Dietary Fiber 4g	14%
Total Sugars 3g	
Includes 0g Added Sugars	0%
Sugar Alcohol 0g	
Protein 22g	
Vitamin D 0.1mcg	0%
Calcium 120mg	10%
Iron 3.4mg	20%
Potassium 550mg	10%

* The % Daily Value (DV) tells you how much a nutrient in a serving of food contributes to a daily diet. 2,000 calories a day is used for general nutrition advice.

Ingredients: Taco Skillet Recipe Cooked (Beef, Ground, 95% Lean Meat / 5% Fat, Raw, Original Rotel Diced Tomatoes And Green Chilies, Onion, Pinto Beans, Water, Lager Style Beer (Malts, Hops, Yeast, Water, Salt), Red Pepper, Jalapeno Pepper, Onion, Pork Belly, Chipotle Peppers, Salt, Cilantro, Tomato Paste, Cumin, Beer Flavor (Maltodextrin, Malted Barley, Hops, Yeast), Sugar, Potato Flour, Onion Powder, Spice, Natural Flavor, Green Bell Pepper Powder, Calcium Chloride, Contain Allergen, Chopped Garlic, Olive Oil, Extra Virgin, Chili Powder, Ground Cumin), Zedric's Salsa Fresca (Tomatoes, Crushed, Water, Lime Juice, Raw, Cilantro Leaves, Raw, Pepper, Serrano, Raw, Olive Oil, Extra Virgin, Kosher Salt), Sour Cream (Cultured Cream, Skim Milk, Vitamin A Palmitate), Mild Cheddar & Monterey Jack Cheese Blend, Scallions

Contains: Milk

Zedric's LLC, 9873 IH-10 West, San Antonio, TX 78230

Manufactured In A Facility That Also Processes: Milk, Egg, Wheat, Peanuts, Soy, Sesame, Cod, Salmon, Almond, Pecan, Mahi, Pine



Beef Taco Skillet Regular

Nutrition Facts	
1 serving per container	
Serving size	(342g)
Amount Per Serving	
Calories	370
% Daily Value*	
Total Fat 15g	19%
Saturated Fat 6g	30%
Trans Fat 0g	
Cholesterol 95mg	32%
Sodium 530mg	23%
Total Carbohydrate 24g	9%
Dietary Fiber 6g	21%
Total Sugars 5g	
Includes 0g Added Sugars	0%
Sugar Alcohol 0g	
Protein 36g	
Vitamin D 0.1mcg	0%
Calcium 200mg	15%
Iron 5.4mg	30%
Potassium 850mg	20%

* The % Daily Value (DV) tells you how much a nutrient in a serving of food contributes to a daily diet. 2,000 calories a day is used for general nutrition advice.

Ingredients: Taco Skillet Recipe Cooked (Beef, Ground, 95% Lean Meat / 5% Fat, Raw, Original Rotel Diced Tomatoes And Green Chilies, Onion, Pinto Beans, Water, Lager Style Beer (Malts, Hops, Yeast, Water, Salt), Red Pepper, Jalapeno Pepper, Onion, Pork Belly, Chipotle Peppers, Salt, Cilantro, Tomato Paste, Cumin, Beer Flavor (Maltodextrin, Malted Barley, Hops, Yeast), Sugar, Potato Flour, Onion Powder, Spice, Natural Flavor, Green Bell Pepper Powder, Calcium Chloride, Contain Allergen, Chopped Garlic, Olive Oil, Extra Virgin, Chili Powder, Ground Cumin), Zedric's Salsa Fresca (Tomatoes, Crushed, Water, Lime Juice, Raw, Cilantro Leaves, Raw, Pepper, Serrano, Raw, Olive Oil, Extra Virgin, Kosher Salt), Sour Cream (Cultured Cream, Skim Milk, Vitamin A Palmitate), Mild Cheddar & Monterey Jack Cheese Blend, Scallions

Contains: Milk

Zedric's LLC, 9873 IH-10 West, San Antonio, TX 78230

ZEDRIC'S ENTREES



Blackened Chicken Salad with Roasted Red Pepper Ranch

Nutrition Facts	
1 serving per container	
Serving size	(321g)
Amount Per Serving	
Calories	300
% Daily Value*	
Total Fat 16g	21%
Saturated Fat 2.5g	13%
Trans Fat 0g	
Cholesterol 85mg	28%
Sodium 300mg	13%
Total Carbohydrate 8g	3%
Dietary Fiber 3g	11%
Total Sugars 3g	
Includes 0g Added Sugars	0%
Protein 31g	
Vitamin D 0.1mcg	0%
Calcium 110mg	8%
Iron 2.3mg	15%
Potassium 320mg	6%

* The % Daily Value (DV) tells you how much a nutrient in a serving of food contributes to a daily diet. 2,000 calories a day is used for general nutrition advice.

Ingredients: 4 Oz Blackened Chicken Breast(Cooked) (Boneless, Skinless, Chicken Breast, All-Natural, Oil, PAM Cooking Spray, Original, Chef Paul Prudhomme's Blackened Redfish Magic Seasoning Blends), Romaine, Roasted Red Pepper Ranch Dressing Zedric's (Duke's Heavy Duty Mayonnaise (Soybean Oil, Egg Yolks, Water, Distilled And Cider Vinegar, Corn Syrup, Salt, High Fructose Corn Syrup, Spice, Oleoresin Paprika, And Calcium Disodium EDTA Added To Protect Flavor), Fire Roasted Red Pepper, Skim Milk (Lowfat Milk, Vitamin A Palmitate, Vitamin D3), Sour Cream (Cultured Cream, Skim Milk, Vitamin A Palmitate), Lemon Juice, Raw, Ranch Dressing Seasoning (Garlic Powder, Kosher Salt, Dill, Spices, Onion Powder, Pepper, Black, Parsley, Chives)), Grape Tomatoes, Red Onion, Cheese, Parmesan, Shredded

Contains: Milk, Egg, Soy

Zedric's LLC, 9873 IH-10 West, San Antonio, TX 78230

Manufactured In A Facility That Also Processes: Milk, Egg, Soy



Blackened Mahi Mahi Over Cilantro Lime Brown Rice Small

Nutrition Facts	
1 serving per container	
Serving size	(287g)
Amount Per Serving	
Calories	260
% Daily Value*	
Total Fat 12g	15%
Saturated Fat 3.5g	18%
Trans Fat 0g	
Cholesterol 100mg	33%
Sodium 510mg	22%
Total Carbohydrate 16g	6%
Dietary Fiber 3g	11%
Total Sugars 3g	
Includes 0g Added Sugars	0%
Protein 24g	
Vitamin D 0mcg	0%
Calcium 50mg	4%
Iron 1.9mg	10%
Potassium 240mg	6%

* The % Daily Value (DV) tells you how much a nutrient in a serving of food contributes to a daily diet. 2,000 calories a day is used for general nutrition advice.

Ingredients: Blackened Mahi Mahi Protein (Mahi Mahi, Chef Paul Prudhomme's Blackened Redfish Magic Seasoning Blends), Cilantro Lime Brown Rice (Brown Rice Cooked (Rice, Brown, Long-Grain), Cilantro Lime Brown Rice (Cilantro Leaves, Raw, Lime Juice, Raw, Red Onion, Butter (Cream, Natural Flavor), Chopped Garlic, Pepper, Black)), Buttered Broccoli (Broccoli, Butter (Cream, Natural Flavor), Pepper, Black), Chipotle Aioli (Water, Olive Oil, Canola Oil, Soybean Oil, Modified Food Starch, Vinegar, Sugar, Maltodextrin, Eggs, Contains Less Than 2% Of Egg Yolks, Salt, Mustard Flour, Dried Onion, Dried Garlic, Natural Flavor, Beta Carotene (Color), Lactic Acid, Potassium Sorbate And Calcium Disodium Edta (To Protect Flavor)), Phosphoric Acid.), La Costena Chipotle Peppers In Adobo Sauce), Lemons, Raw

Contains: Milk, Egg, Soy, Mahi

Zedric's LLC, 9873 IH-10 West, San Antonio, TX 78230

Manufactured In A Facility That Also Processes: Milk, Egg, Wheat, Peanuts, Soy, Sesame, Cod, Salmon, Almond, Pecan, Mahi, Pine Nuts



Blackened Mahi Mahi Over Cilantro Lime Brown Rice Regular

Nutrition Facts	
1 serving per container	
Serving size	(479g)
Amount Per Serving	
Calories	400
% Daily Value*	
Total Fat 14g	18%
Saturated Fat 4g	20%
Trans Fat 0g	
Cholesterol 185mg	62%
Sodium 800mg	35%
Total Carbohydrate 23g	8%
Dietary Fiber 3g	11%
Total Sugars 3g	
Includes 0g Added Sugars	0%
Protein 46g	
Vitamin D 0mcg	0%
Calcium 80mg	6%
Iron 3.3mg	20%
Potassium 300mg	6%

* The % Daily Value (DV) tells you how much a nutrient in a serving of food contributes to a daily diet. 2,000 calories a day is used for general nutrition advice.

Ingredients: Blackened Mahi Mahi Protein (Mahi Mahi, Chef Paul Prudhomme's Blackened Redfish Magic Seasoning Blends), Cilantro Lime Brown Rice (Brown Rice Cooked (Rice, Brown, Long-Grain), Cilantro Lime Brown Rice (Cilantro Leaves, Raw, Lime Juice, Raw, Red Onion, Butter (Cream, Natural Flavor), Chopped Garlic, Pepper, Black)), Buttered Broccoli (Broccoli, Butter (Cream, Natural Flavor), Pepper, Black), Chipotle Aioli (Water, Olive Oil, Canola Oil, Soybean Oil, Modified Food Starch, Vinegar, Sugar, Maltodextrin, Eggs, Contains Less Than 2% Of Egg Yolks, Salt, Mustard Flour, Dried Onion, Dried Garlic, Natural Flavor, Beta Carotene (Color), Lactic Acid, Potassium Sorbate And Calcium Disodium Edta (To Protect Flavor)), Phosphoric Acid.), La Costena Chipotle Peppers In Adobo Sauce), Lemons, Raw

Contains: Milk, Egg, Soy, Mahi

Zedric's LLC, 9873 IH-10 West, San Antonio, TX 78230

Manufactured In A Facility That Also Processes: Milk, Egg, Wheat, Peanuts, Soy, Sesame, Cod, Salmon, Almond, Pecan, Mahi, Pine Nut



Breaded Chik'n Cutlet Small

Nutrition Facts	
1 serving per container	
Serving size	(255g)
Amount Per Serving	
Calories	350
% Daily Value*	
Total Fat 16g	21%
Saturated Fat 4.5g	23%
Trans Fat 0g	
Cholesterol 20mg	7%
Sodium 500mg	22%
Total Carbohydrate 49g	18%
Dietary Fiber 4g	14%
Total Sugars 4g	
Includes 0g Added Sugars	0%
Sugar Alcohol 0g	
Protein 11g	
Vitamin D 0mcg	0%
Calcium 100mg	8%
Iron 3.4mg	20%
Potassium 230mg	4%

* The % Daily Value (DV) tells you how much a nutrient in a serving of food contributes to a daily diet. 2,000 calories a day is used for general nutrition advice.

Ingredients: Jasmine Rice Pilaf (Buttered Jasmine Rice Cooked (Water, Jasmine Long Grain White Rice - Golden Star, Butter (Cream, Natural Flavor)), Jasmine Rice Pilaf (Red Onion, Mushrooms, White, Raw, Onions, Green, Chopped Garlic, Kosher Salt, Pepper, Black)), Buttered Broccoli (Broccoli, Butter (Cream, Natural Flavor), Pepper, Black), Breaded Chik'n Patty (MYCOPROTEIN, WHEAT FLOUR, WATER, EXPPELLER PRESSED CANOLA OIL, WHEAT STARCH, CONTAINS 2% OR LESS OF: WHEAT GLUTEN, MILK PROTEIN ISOLATE, SALT, FREE RANGE EGG WHITE POWDER, POTATO DEXTRIN, NONFAT MILK, WHEAT MALTODEXTRIN, MODIFIED CORN STARCH, SPICES, LEAVENING (SODIUM ACID PYROPHOSPHATE, SODIUM BICARBONATE), YEAST EXTRACT, CALCIUM ACETATE, CALCIUM CHLORIDE, DEXTROSE, TURBINADO SUGAR, PECTIN, GUAR GUM, YEAST, SUGAR, MALTODEXTRIN, NATURAL FLAVORS, POTASSIUM PHOSPHATES CONTAINS: WHEAT, MILK, EGGS), Chipotle Aioli (Water, Olive Oil, Canola Oil, Soybean Oil, Modified Food Starch, Vinegar, Sugar, Maltodextrin, Eggs, Contains Less Than 2% Of Egg Yolks, Salt, Mustard Flour, Dried Onion, Dried Garlic, Natural Flavor, Beta Carotene (Color), Lactic Acid, Potassium Sorbate And Calcium Disodium Edta (To Protect Flavor)), Phosphoric Acid.), La Costena Chipotle Peppers In Adobo Sauce)

Contains: Milk, Egg, Wheat, Soy

Zedric's LLC, 9873 IH-10 West, San Antonio, TX 78230

Manufactured In A Facility That Also Processes: Milk, Egg, Wheat, Peanuts, Soy, Sesame, Cod, Salmon, Almond, Pecan, Mahi, Pine Nuts

ZEDRIC'S ENTREES



**Breaded Chik'n Cutlet
Regular**

Nutrition Facts	
1 serving per container	
Serving size	(368g)
Amount Per Serving	
Calories	530
% Daily Value*	
Total Fat 22g	28%
Saturated Fat 6g	30%
Trans Fat 0g	
Cholesterol 25mg	8%
Sodium 750mg	33%
Total Carbohydrate 75g	27%
Dietary Fiber 7g	25%
Total Sugars 5g	
Includes 0g Added Sugars	0%
Sugar Alcohol 0g	
Protein 19g	
Vitamin D 0mcg	0%
Calcium 180mg	15%
Iron 6.2mg	35%
Potassium 280mg	6%

* The % Daily Value (DV) tells you how much a nutrient in a serving of food contributes to a daily diet. 2,000 calories a day is used for general nutrition advice.

Ingredients: Jasmine Rice Pilaf (Buttered Jasmine Rice Cooked (Water, Jasmine Long Grain White Rice - Golden Star, Butter (Cream, Natural Flavor)), Jasmine Rice Pilaf (Red Onion, Mushrooms, White, Raw, Onions, Green, Chopped Garlic, Kosher Salt, Pepper, Black)), Breaded Chik'n Patty (MYCOPROTEIN, WHEAT FLOUR, WATER, EXPELLER PRESSED CANOLA OIL, WHEAT STARCH, CONTAINS 2% OR LESS OF: WHEAT GLUTEN, MILK PROTEIN ISOLATE, SALT, FREE RANGE EGG WHITE POWDER, POTATO DEXTRIN, NONFAT MILK, WHEAT MALTODEXTRIN, MODIFIED CORN STARCH, SPICES, LEAVENING (SODIUM ACID PYROPHOSPHATE, SODIUM BICARBONATE), YEAST EXTRACT, CALCIUM ACETATE, CALCIUM CHLORIDE, DEXTROSE, TURBINADO SUGAR, PECTIN, GUAR GUM, YEAST, SUGAR, MALTODEXTRIN, NATURAL FLAVORS, POTASSIUM PHOSPHATES CONTAINS: WHEAT, MILK, EGGS), Buttered Broccoli (Broccoli, Butter (Cream, Natural Flavor), Pepper, Black), Chipotle Aioli (Water, Olive Oil, Canola Oil, Soybean Oil, Modified Food Starch, Vinegar, Sugar, Maltodextrin, Eggs, Contains Less Than 2% Of Egg Yolks, Salt, Mustard Flour, Dried Onion, Dred Garlic, Natural Flavor, Beta Carotene (Color), Lactic Acid, Potassium Sorbate And Calcium Disodium Edta (To Protect Flavor), Phosphoric Acid.), La Costena Chipotle Peppers In Adobo Sauce)

Contains: Milk, Egg, Wheat, Soy
Zedric's LLC, 9873 IH-10 West, San Antonio, TX 78230

Manufactured In A Facility That Also Processes: Milk, Egg, Wheat, Peanuts, Soy, Sesame, Cod, Salmon, Almond, Pecan, Mahi, Pine Nuts



**Chicken & Italian
Sausage Pasta Small**

Nutrition Facts	
1 serving per container	
Serving size	(255g)
Amount Per Serving	
Calories	340
% Daily Value*	
Total Fat 16g	21%
Saturated Fat 5g	25%
Trans Fat 0g	
Cholesterol 95mg	32%
Sodium 470mg	20%
Total Carbohydrate 15g	5%
Dietary Fiber 2g	7%
Total Sugars 2g	
Includes <1g Added Sugars	1%
Sugar Alcohol 0g	
Protein 32g	
Vitamin D 0mcg	0%
Calcium 70mg	6%
Iron 2.4mg	15%
Potassium 340mg	8%

* The % Daily Value (DV) tells you how much a nutrient in a serving of food contributes to a daily diet. 2,000 calories a day is used for general nutrition advice.

Ingredients: Italian Sausage & Chicken Mix (COOKED) (Chicken Breast, Sausage, Italian, Pork, Raw), Tri Colored Rotini With Rose Sauce (Tri-Color Rotini (Cooked) (Tri Color Pasta (SEMOLINA (WHEAT), DURUM WHEAT FLOUR, DRIED SPINACH, DRIED TOMATO, VITAMINS/MINERALS: VITAMIN B3 (NIACIN), IRON (FERROUS SULFATE), VITAMIN B1 (THIAMINE MONONITRATE), VITAMIN B2 (RIBOFLAVIN), FOLIC ACID), Rose Pasta Sauce (Marinara Sauce, Angela Mia, Sour Cream (Cultured Cream, Skim Milk, Vitamin A Palmitate)), Mushroom & Spinach Mix (Spinach, Raw, Mushrooms, White, Raw, Olive Oil, Extra Virgin))

Contains: Milk, Wheat
Zedric's LLC, 9873 IH-10 West, San Antonio, TX 78230

Manufactured In A Facility That Also Processes: Milk, Egg, Wheat, Peanuts, Soy, Sesame, Cod, Salmon, Almond, Pecan, Mahi, Pine Nut



**Chicken & Italian
Sausage Pasta Regular**

Nutrition Facts	
1 serving per container	
Serving size	(454g)
Amount Per Serving	
Calories	580
% Daily Value*	
Total Fat 26g	33%
Saturated Fat 9g	45%
Trans Fat 0g	
Cholesterol 155mg	52%
Sodium 800mg	35%
Total Carbohydrate 30g	11%
Dietary Fiber 4g	14%
Total Sugars 4g	
Includes 1g Added Sugars	2%
Sugar Alcohol 0g	
Protein 53g	
Vitamin D 0.1mcg	0%
Calcium 120mg	10%
Iron 4.2mg	25%
Potassium 630mg	15%

* The % Daily Value (DV) tells you how much a nutrient in a serving of food contributes to a daily diet. 2,000 calories a day is used for general nutrition advice.

Ingredients: Italian Sausage & Chicken Mix (COOKED) (Chicken Breast, Sausage, Italian, Pork, Raw), Tri Colored Rotini With Rose Sauce (Tri-Color Rotini (Cooked) (Tri Color Pasta (SEMOLINA (WHEAT), DURUM WHEAT FLOUR, DRIED SPINACH, DRIED TOMATO, VITAMINS/MINERALS: VITAMIN B3 (NIACIN), IRON (FERROUS SULFATE), VITAMIN B1 (THIAMINE MONONITRATE), VITAMIN B2 (RIBOFLAVIN), FOLIC ACID), Rose Pasta Sauce (Marinara Sauce, Angela Mia, Sour Cream (Cultured Cream, Skim Milk, Vitamin A Palmitate)), Mushroom & Spinach Mix (Spinach, Raw, Mushrooms, White, Raw, Olive Oil, Extra Virgin))

Contains: Milk, Wheat
Zedric's LLC, 9873 IH-10 West, San Antonio, TX 78230

Manufactured In A Facility That Also Processes: Milk, Egg, Wheat, Peanuts, Soy, Sesame, Cod, Salmon, Almond, Pecan, Mahi, Pine Nut



**Chicken Enchilada
Casserole Small**

Nutrition Facts	
1 serving per container	
Serving size	(319g)
Amount Per Serving	
Calories	350
% Daily Value*	
Total Fat 11g	14%
Saturated Fat 5g	25%
Trans Fat 0g	
Cholesterol 85mg	28%
Sodium 600mg	26%
Total Carbohydrate 37g	13%
Dietary Fiber <1g	3%
Total Sugars 1g	
Includes 0g Added Sugars	0%
Sugar Alcohol 0g	
Protein 32g	
Vitamin D 0mcg	0%
Calcium 160mg	10%
Iron 1.3mg	8%
Potassium 90mg	2%

* The % Daily Value (DV) tells you how much a nutrient in a serving of food contributes to a daily diet. 2,000 calories a day is used for general nutrition advice.

Ingredients: Chicken Enchilada Casserole Mix (Chicken Enchilada Casserole Sauce (Sauce, Enchilada, Red, Mild, Ready To Serve, Diced Green Chiles, Mild Cheddar & Monterey Jack Cheese Blend, Onions, Yellow, Sour Cream (Cultured Cream, Skim Milk, Vitamin A Palmitate)), Shredded Chicken Cooked (Chicken)), Buttered Jasmine Rice Cooked (Water, Jasmine Long Grain White Rice - Golden Star, Butter (Cream, Natural Flavor))

Contains: Milk, Soy
Zedric's LLC, 9873 IH-10 West, San Antonio, TX 78230

Manufactured In A Facility That Also Processes: Milk, Egg, Wheat, Peanuts, Soy, Sesame, Cod, Salmon, Almond, Pecan, Mahi, Pine Nut



Chicken Enchilada Casserole Regular

Nutrition Facts	
1 serving per container	
Serving size	(425g)
Amount Per Serving	
Calories	470
	% Daily Value*
Total Fat 15g	19%
Saturated Fat 6g	30%
<i>Trans Fat</i> 0g	
Cholesterol 115mg	38%
Sodium 780mg	34%
Total Carbohydrate 52g	19%
Dietary Fiber 1g	4%
Total Sugars 1g	
Includes 0g Added Sugars	0%
Sugar Alcohol 0g	
Protein 42g	
Vitamin D 0mcg	0%
Calcium 200mg	15%
Iron 1.6mg	10%
Potassium 120mg	2%

* The % Daily Value (DV) tells you how much a nutrient in a serving of food contributes to a daily diet. 2,000 calories a day is used for general nutrition advice.

Ingredients: Chicken Enchilada Casserole Mix (Chicken Enchilada Casserole Sauce (Sauce, Enchilada, Red, Mild, Ready To Serve, Diced Green Chiles, Mild Cheddar & Monterey Jack Cheese Blend, Onions, Yellow, Sour Cream (Cultured Cream, Skim Milk, Vitamin A Palmitate)), Shredded Chicken Cooked (Chicken)), Buttered Jasmine Rice Cooked (Water, Jasmine Long Grain White Rice - Golden Star, Butter (Cream, Natural Flavor))

Contains: Milk, Soy

Zedric's LLC, 9873 IH-10 West, San Antonio, TX 78230

Manufactured In A Facility That Also Processes: Milk, Egg, Wheat, Peanuts, Soy, Sesame, Cod, Salmon, Almond, Pecan, Mahi, Pine Nut



Chicken Madeira Small

Nutrition Facts	
1 serving per container	
Serving size	(379g)
Amount Per Serving	
Calories	340
	% Daily Value*
Total Fat 10g	13%
Saturated Fat 5g	25%
<i>Trans Fat</i> 0g	
Cholesterol 90mg	30%
Sodium 630mg	27%
Total Carbohydrate 26g	9%
Dietary Fiber 5g	18%
Total Sugars 5g	
Includes 0g Added Sugars	0%
Protein 33g	
Vitamin D 0.1mcg	0%
Calcium 660mg	50%
Iron 1.6mg	8%
Potassium 190mg	4%

* The % Daily Value (DV) tells you how much a nutrient in a serving of food contributes to a daily diet. 2,000 calories a day is used for general nutrition advice.

Ingredients: 4 Oz Mozerella Seared Chicken (Boneless, Skinless, Chicken Breast, All-Natural, Cheese, Mozzarella, Part Skim Milk), Potatoes, Skim Milk, Butter, Natural Sour Cream, Salt, Spice, Buttered Green Beans (Beans, Green, Butter (Cream, Natural Flavor), Pepper, Black), Madeira Sauce (Water, Mushrooms, White, Raw, Wine Marsala, Dry, Chopped Garlic, Argo Corn Starch, Beef Base, Gluten Free, Pepper, Black, Thyme, Fresh)

Contains: Milk

Zedric's LLC, 9873 IH-10 West, San Antonio, TX 78230

Manufactured In A Facility That Also Processes: Milk, Egg, Wheat, Peanuts, Soy, Sesame, Cod, Salmon, Almond, Pecan, Mahi, Pine Nut



Chicken Madeira Regular

Nutrition Facts	
1 serving per container	
Serving size	(502g)
Amount Per Serving	
Calories	490
	% Daily Value*
Total Fat 13g	17%
Saturated Fat 6g	30%
<i>Trans Fat</i> 0g	
Cholesterol 165mg	55%
Sodium 770mg	33%
Total Carbohydrate 26g	9%
Dietary Fiber 5g	18%
Total Sugars 5g	
Includes 0g Added Sugars	0%
Protein 61g	
Vitamin D 0.1mcg	0%
Calcium 750mg	60%
Iron 2.5mg	15%
Potassium 200mg	4%

* The % Daily Value (DV) tells you how much a nutrient in a serving of food contributes to a daily diet. 2,000 calories a day is used for general nutrition advice.

Ingredients: 4 Oz Mozerella Seared Chicken (Boneless, Skinless, Chicken Breast, All-Natural, Cheese, Mozzarella, Part Skim Milk), Potatoes, Skim Milk, Butter, Natural Sour Cream, Salt, Spice, Buttered Green Beans (Beans, Green, Butter (Cream, Natural Flavor), Pepper, Black), Madeira Sauce (Water, Mushrooms, White, Raw, Wine Marsala, Dry, Chopped Garlic, Argo Corn Starch, Beef Base, Gluten Free, Pepper, Black, Thyme, Fresh)

Contains: Milk

Zedric's LLC, 9873 IH-10 West, San Antonio, TX 78230

Manufactured In A Facility That Also Processes: Milk, Egg, Wheat, Peanuts, Soy, Sesame, Cod, Salmon, Almond, Pecan, Mahi, Pine Nut



Chicken Pad Thai Small

Nutrition Facts	
1 serving per container	
Serving size	(251g)
Amount Per Serving	
Calories	350
	% Daily Value*
Total Fat 15g	19%
Saturated Fat 2.5g	13%
<i>Trans Fat</i> 0g	
Cholesterol 135mg	45%
Sodium 440mg	19%
Total Carbohydrate 27g	10%
Dietary Fiber 2g	7%
Total Sugars 3g	
Includes 2g Added Sugars	4%
Sugar Alcohol 0g	
Protein 26g	
Vitamin D 0.5mcg	2%
Calcium 60mg	4%
Iron 2.3mg	15%
Potassium 180mg	4%

* The % Daily Value (DV) tells you how much a nutrient in a serving of food contributes to a daily diet. 2,000 calories a day is used for general nutrition advice.

Ingredients: Soy Sauce Chicken Pieces (Chicken, Water, Soybeans, Salt, Alcohol (To Preserve Freshness), Rice Vinegar, Lactic Acid.), Pad Thai Mix (Sautéed Cabbage & Yellow Onion (Cabbage, Raw, Onions, Yellow, Olive Oil), Zedric's Egg & Egg White Mix (Egg, Whole, Raw, Fresh, Egg Whites), Pad Thai Sauce (Olive Oil, Extra Virgin, San-J Tamari Gluten Free Soy Sauce, Lime Juice, Raw, Chopped Garlic, Rice Wine Vinegar, Brown Sugar, Organic Ginger Root Powder, Sauce, Fish, Ready-To-Serve, Chili Flakes)), Rice Noodles Cooked (Rice Noodles, Dry), Cilantro Leaves, Raw, Roasted Peanuts

Contains: Egg, Peanuts, Sesame, Fish Sauce

Zedric's LLC, 9873 IH-10 West, San Antonio, TX 78230

Manufactured In A Facility That Also Processes: Milk, Egg, Peanuts, Soy, Sesame, Cod, Salmon, Almond, Pecan, Mahi, Pine Nut

ZEDRIC'S ENTREES



Chicken Pad Thai
Regular

Nutrition Facts	
1 serving per container	
Serving size	(407g)
Amount Per Serving	
Calories	570
% Daily Value*	
Total Fat 24g	31%
Saturated Fat 4g	20%
<i>Trans Fat</i> 0g	
Cholesterol 225mg	75%
Sodium 730mg	32%
Total Carbohydrate 42g	15%
Dietary Fiber 2g	7%
Total Sugars 5g	
Includes 3g Added Sugars	6%
Sugar Alcohol 0g	
Protein 43g	
Vitamin D 0.8mcg	4%
Calcium 90mg	8%
Iron 3.6mg	20%
Potassium 270mg	6%

* The % Daily Value (DV) tells you how much a nutrient in a serving of food contributes to a daily diet. 2,000 calories a day is used for general nutrition advice.

Ingredients: Soy Sauce Chicken Pieces (Chicken, Water, Soybeans, Salt, Alcohol (To Preserve Freshness), Rice Vinegar, Lactic Acid.), Pad Thai Mix (Sautéed Cabbage & Yellow Onion (Cabbage, Raw, Onions, Yellow, Olive Oil), Zedric's Egg & Egg White Mix (Egg, Whole, Raw, Fresh, Egg Whites), Pad Thai Sauce (Olive Oil, Extra Virgin, San-J Tamari Gluten Free Soy Sauce, Lime Juice, Raw, Chopped Garlic, Rice Wine Vinegar, Brown Sugar, Organic Ginger Root Powder, Sauce, Fish, Ready-To-Serve, Chili Flakes)), Rice Noodles Cooked (Rice Noodles, Dry), Cilantro Leaves, Raw, Roasted Peanuts

Contains: Egg, Peanuts, Soy, Fish Sauce

Zedric's LLC, 9873 IH-10 West, San Antonio, TX 78230

Manufactured In A Facility That Also Processes: Milk, Egg, Wheat, Peanuts, Soy, Sesame, Cod, Salmon, Almond, Pecan, Mahi, Pine Nut



Dirty Rice Small

Nutrition Facts	
1 serving per container	
Serving size	(298g)
Amount Per Serving	
Calories	320
% Daily Value*	
Total Fat 9g	12%
Saturated Fat 4g	20%
<i>Trans Fat</i> 0g	
Cholesterol 60mg	20%
Sodium 490mg	21%
Total Carbohydrate 45g	16%
Dietary Fiber 6g	21%
Total Sugars 2g	
Includes 0g Added Sugars	0%
Protein 24g	
Vitamin D 0.1mcg	0%
Calcium 70mg	6%
Iron 5mg	30%
Potassium 900mg	20%

* The % Daily Value (DV) tells you how much a nutrient in a serving of food contributes to a daily diet. 2,000 calories a day is used for general nutrition advice.

Ingredients: Dirty Rice Final Mix (Dirty Rice Meat Mix Bulk (Beef, Ground, 95% Lean Meat / 5% Fat, Raw, Dirty Rice Spice Blend (Apple Cider Vinegar, Chopped Garlic, Chef Paul Prudhomme's Blackened Redfish Magic Seasoning Blends, Thyme), Poblano Pepper, Red Onion, Celery, Pepper, Black), Buttered Jasmine Rice Cooked (Water, Jasmine Long Grain White Rice - Golden Star, Butter (Cream, Natural Flavor)), Vegetable Blend For Dirty Rice (Red Onion, Mushrooms, White, Raw)), Buttered Broccoli (Broccoli, Butter (Cream, Natural Flavor), Pepper, Black)

Contains: Milk

Zedric's LLC, 9873 IH-10 West, San Antonio, TX 78230

Manufactured In A Facility That Also Processes: Milk, Egg, Wheat, Peanuts, Soy, Sesame, Cod, Salmon, Almond, Pecan, Mahi, Pine Nuts



Dirty Rice Regular

Nutrition Facts	
1 serving per container	
Serving size	(454g)
Amount Per Serving	
Calories	490
% Daily Value*	
Total Fat 14g	18%
Saturated Fat 6g	30%
<i>Trans Fat</i> 0g	
Cholesterol 90mg	30%
Sodium 750mg	33%
Total Carbohydrate 69g	25%
Dietary Fiber 9g	32%
Total Sugars 3g	
Includes 0g Added Sugars	0%
Protein 37g	
Vitamin D 0.1mcg	0%
Calcium 110mg	8%
Iron 7.6mg	40%
Potassium 1380mg	30%

* The % Daily Value (DV) tells you how much a nutrient in a serving of food contributes to a daily diet. 2,000 calories a day is used for general nutrition advice.

Ingredients: Dirty Rice Final Mix (Dirty Rice Meat Mix Bulk (Beef, Ground, 95% Lean Meat / 5% Fat, Raw, Dirty Rice Spice Blend (Apple Cider Vinegar, Chopped Garlic, Chef Paul Prudhomme's Blackened Redfish Magic Seasoning Blends, Thyme), Poblano Pepper, Red Onion, Celery, Pepper, Black), Buttered Jasmine Rice Cooked (Water, Jasmine Long Grain White Rice - Golden Star, Butter (Cream, Natural Flavor)), Vegetable Blend For Dirty Rice (Red Onion, Mushrooms, White, Raw)), Buttered Broccoli (Broccoli, Butter (Cream, Natural Flavor), Pepper, Black)

Contains: Milk

Zedric's LLC, 9873 IH-10 West, San Antonio, TX 78230

Manufactured In A Facility That Also Processes: Milk, Egg, Wheat, Peanuts, Soy, Sesame, Cod, Salmon, Almond, Pecan, Mahi, Pine Nuts



Glazed Beef Meatloaf Small

Nutrition Facts	
1 serving per container	
Serving size	(269g)
Amount Per Serving	
Calories	280
% Daily Value*	
Total Fat 10g	13%
Saturated Fat 5g	25%
<i>Trans Fat</i> 0g	
Cholesterol 85mg	28%
Sodium 450mg	20%
Total Carbohydrate 31g	11%
Dietary Fiber 3g	11%
Total Sugars 8g	
Includes 3g Added Sugars	6%
Sugar Alcohol 0g	
Protein 20g	
Vitamin D 0.2mcg	2%
Calcium 420mg	30%
Iron 2.1mg	10%
Potassium 480mg	10%

* The % Daily Value (DV) tells you how much a nutrient in a serving of food contributes to a daily diet. 2,000 calories a day is used for general nutrition advice.

Ingredients: Glazed Meatloaf 4oz (Meatloaf Recipe (Beef, Ground, 95% Lean Meat / 5% Fat, Raw, Onion, Julienne Carrots, Zedric's Egg & Egg White Mix (Egg, Whole, Raw, Fresh, Egg Whites), Chopped Garlic), Ketchup Glaze For Meatloaf (Ketchup (TOMATO CONCENTRATE FROM RED RIPE TOMATOES, DISTILLED VINEGAR, HIGH FRUCTOSE CORN SYRUP, CORN SYRUP, SALT, SPICE, ONION POWDER, NATURAL FLAVORING), Brown Sugar, White Wine Vinegar, Chopped Garlic)), Potatoes, Skim Milk, Butter, Natural Sour Cream, Salt, Spice, Buttered Corn (Corn, Butter (Cream, Natural Flavor))

Contains: Milk, Egg

Zedric's LLC, 9873 IH-10 West, San Antonio, TX 78230

Manufactured In A Facility That Also Processes: Milk, Egg, Wheat, Peanuts, Soy, Sesame, Cod, Salmon, Almond, Pecan, Mahi, Pine Nuts

ZEDRIC'S ENTREES



Glazed Beef Meatloaf Regular

Nutrition Facts	
1 serving per container	
Serving size	(453g)
Amount Per Serving	
Calories	480
% Daily Value*	
Total Fat 16g	21%
Saturated Fat 8g	40%
<i>Trans Fat</i> 0g	
Cholesterol 165mg	55%
Sodium 720mg	31%
Total Carbohydrate 48g	17%
Dietary Fiber 5g	18%
Total Sugars 15g	
Includes 5g Added Sugars	10%
Sugar Alcohol 0g	
Protein 38g	
Vitamin D 0.4mcg	2%
Calcium 580mg	45%
Iron 4.2mg	25%
Potassium 910mg	20%

* The % Daily Value (DV) tells you how much a nutrient in a serving of food contributes to a daily diet. 2,000 calories a day is used for general nutrition advice.

Ingredients: Glazed Meatloaf 4oz (Meatloaf Recipe (Beef, Ground, 95% Lean Meat / 5% Fat, Raw, Onion, Julienned Carrots, Zedric's Egg & Egg White Mix (Egg, Whole, Raw, Fresh, Egg Whites), Chopped Garlic), Ketchup Glaze For Meatloaf (Ketchup (TOMATO CONCENTRATE FROM RED RIPE TOMATOES, DISTILLED VINEGAR, HIGH FRUCTOSE CORN SYRUP, CORN SYRUP, SALT, SPICE, ONION POWDER, NATURAL FLAVORING), Brown Sugar, White Wine Vinegar, Chopped Garlic)), Potatoes, Skim Milk, Butter, Natural Sour Cream, Salt, Spice, Buttered Corn (Corn, Butter (Cream, Natural Flavor))

Contains: Milk, Egg

Zedric's LLC, 9873 IH-10 West, San Antonio, TX 78230

Manufactured In A Facility That Also Processes: Milk, Egg, Wheat, Peanuts, Soy, Sesame, Cod, Salmon, Almond, Pecan, Mahi, Pine Nut



Greek Chicken Bowl Small

Nutrition Facts	
1 serving per container	
Serving size	(252g)
Amount Per Serving	
Calories	290
% Daily Value*	
Total Fat 10g	13%
Saturated Fat 6g	30%
<i>Trans Fat</i> 0g	
Cholesterol 55mg	18%
Sodium 230mg	10%
Total Carbohydrate 36g	13%
Dietary Fiber 0g	0%
Total Sugars 1g	
Includes 0g Added Sugars	0%
Protein 23g	
Vitamin D 0mcg	0%
Calcium 60mg	4%
Iron 0.8mg	4%
Potassium 30mg	0%

* The % Daily Value (DV) tells you how much a nutrient in a serving of food contributes to a daily diet. 2,000 calories a day is used for general nutrition advice.

Ingredients: Buttered Jasmine Rice Cooked (Water, Jasmine Long Grain White Rice - Golden Star, Butter (Cream, Natural Flavor)), Lemon Garlic (Mediterranean) Chicken Pieces (Chicken, Mediterranean Chicken Marinade (Lemon Juice, Raw, Olive Oil, Extra Virgin, Paprika, Chopped Garlic, Spices, Oregano, Dried, Thyme, Pepper, Black)), Greek Peasant Salad (Grape Tomatoes, Cucumber, Feta (Pasteurized Milk, Nonfat Milk, Salt, Cheese Culture, Enzymes, Calcium Chloride), Red Onion), Sauce, Tzatziki - Grecian Delight

Contains: Milk

Zedric's LLC, 9873 IH-10 West, San Antonio, TX 78230

Manufactured In A Facility That Also Processes: Milk, Egg, Wheat, Peanuts, Soy, Sesame, Cod, Salmon, Almond, Pecan, Mahi, Pine Nuts



Greek Chicken Bowl Regular

Nutrition Facts	
1 serving per container	
Serving size	(425g)
Amount Per Serving	
Calories	490
% Daily Value*	
Total Fat 18g	23%
Saturated Fat 10g	50%
<i>Trans Fat</i> 0g	
Cholesterol 110mg	37%
Sodium 420mg	18%
Total Carbohydrate 53g	19%
Dietary Fiber <1g	2%
Total Sugars 2g	
Includes 0g Added Sugars	0%
Protein 43g	
Vitamin D 0mcg	0%
Calcium 90mg	8%
Iron 1.6mg	8%
Potassium 50mg	2%

* The % Daily Value (DV) tells you how much a nutrient in a serving of food contributes to a daily diet. 2,000 calories a day is used for general nutrition advice.

Ingredients: Lemon Garlic (Mediterranean) Chicken Pieces (Chicken, Mediterranean Chicken Marinade (Lemon Juice, Raw, Olive Oil, Extra Virgin, Paprika, Chopped Garlic, Spices, Oregano, Dried, Thyme, Pepper, Black)), Buttered Jasmine Rice Cooked (Water, Jasmine Long Grain White Rice - Golden Star, Butter (Cream, Natural Flavor)), Greek Peasant Salad (Grape Tomatoes, Cucumber, Feta (Pasteurized Milk, Nonfat Milk, Salt, Cheese Culture, Enzymes, Calcium Chloride), Red Onion), Sauce, Tzatziki - Grecian Delight

Contains: Milk

Zedric's LLC, 9873 IH-10 West, San Antonio, TX 78230

Manufactured In A Facility That Also Processes: Milk, Egg, Wheat, Peanuts, Soy, Sesame, Cod, Salmon, Almond, Pecan, Mahi, Pine Nut



Green Chile Chicken Over Jasmine Rice Small

Nutrition Facts	
1 serving per container	
Serving size	(333g)
Amount Per Serving	
Calories	340
% Daily Value*	
Total Fat 8g	10%
Saturated Fat 3.5g	18%
<i>Trans Fat</i> 0g	
Cholesterol 95mg	32%
Sodium 210mg	9%
Total Carbohydrate 35g	13%
Dietary Fiber <1g	2%
Total Sugars 3g	
Includes 0g Added Sugars	0%
Sugar Alcohol 0g	
Protein 36g	
Vitamin D 0.1mcg	0%
Calcium 180mg	15%
Iron 1.4mg	8%
Potassium 170mg	4%

* The % Daily Value (DV) tells you how much a nutrient in a serving of food contributes to a daily diet. 2,000 calories a day is used for general nutrition advice.

Ingredients: Green Chile Shredded Chicken (Shredded Chicken Cooked (Chicken), Green Chile Sauce Raw Cooked (Roasted Hatch Green Chile, Sour Cream (Cultured Cream, Skim Milk, Vitamin A Palmitate), Onion, Lime Juice, Raw, Cilantro Leaves, Raw, Chopped Garlic, Olive Oil, Extra Virgin)), Buttered Jasmine Rice Cooked (Water, Jasmine Long Grain White Rice - Golden Star, Butter (Cream, Natural Flavor)), Cheese, Mozzarella, Part Skim Milk, Cilantro Leaves, Raw

Contains: Milk

Zedric's LLC, 9873 IH-10 West, San Antonio, TX 78230

Manufactured In A Facility That Also Processes: Milk, Egg, Wheat, Peanuts, Soy, Sesame, Cod, Salmon, Almond, Pecan, Mahi, Pine Nut

ZEDRIC'S ENTREES



**Green Chile Chicken
Over Jasmine Rice
Regular**

Nutrition Facts	
1 serving per container	
Serving size	(489g)
Amount Per Serving	
Calories	510
	% Daily Value*
Total Fat 13g	17%
Saturated Fat 6g	30%
Trans Fat 0g	
Cholesterol 140mg	47%
Sodium 340mg	15%
Total Carbohydrate 56g	20%
Dietary Fiber <1g	3%
Total Sugars 4g	
Includes 0g Added Sugars	0%
Sugar Alcohol 0g	
Protein 52g	
Vitamin D 0.1mcg	0%
Calcium 310mg	25%
Iron 1.9mg	10%
Potassium 220mg	4%

* The % Daily Value (DV) tells you how much a nutrient in a serving of food contributes to a daily diet. 2,000 calories a day is used for general nutrition advice.

Ingredients: Green Chile Shredded Chicken (Shredded Chicken Cooked (Chicken), Green Chile Sauce Raw Cooked (Roasted Hatch Green Chile, Sour Cream (Cultured Cream, Skim Milk, Vitamin A Palmitate), Onion, Lime Juice, Raw, Cilantro Leaves, Raw, Chopped Garlic, Olive Oil, Extra Virgin)), Buttered Jasmine Rice Cooked (Water, Jasmine Long Grain White Rice - Golden Star, Butter (Cream, Natural Flavor)), Cheese, Mozzarella, Part Skim Milk, Cilantro Leaves, Raw

Contains: Milk

Zedric's LLC, 9873 IH-10 West, San Antonio, TX 78230

Manufactured In A Facility That Also Processes: Milk, Egg, Wheat, Peanuts, Soy, Sesame, Cod, Salmon, Almond, Pecan, Mahi, Pine Nuts



**Grilled Chicken Over
Cheesy Bacon Broccoli
Casserole Small**

Nutrition Facts	
1 serving per container	
Serving size	(257g)
Amount Per Serving	
Calories	300
	% Daily Value*
Total Fat 12g	15%
Saturated Fat 5g	25%
Trans Fat 0g	
Cholesterol 95mg	32%
Sodium 460mg	20%
Total Carbohydrate 9g	3%
Dietary Fiber 2g	7%
Total Sugars 3g	
Includes 0g Added Sugars	0%
Sugar Alcohol 0g	
Protein 36g	
Vitamin D 0.4mcg	2%
Calcium 230mg	15%
Iron 1.5mg	8%
Potassium 270mg	6%

* The % Daily Value (DV) tells you how much a nutrient in a serving of food contributes to a daily diet. 2,000 calories a day is used for general nutrition advice.

Ingredients: Cheesy Bacon Broccoli Casserole Cooked (Buttered Broccoli (Broccoli, Butter (Cream, Natural Flavor), Pepper, Black), Steamed Cauliflower (Cauliflower), Fancy Cheese Sauce (Milk, Nonfat, Parmesan (Milk, Cheese Cultures, Salt, Enzymes), Mild Cheddar & Monterey Jack Cheese Blend, Cornstarch), Applegate Organics Uncured Reduced Sodium Sunday Bacon), 4 Oz Grilled Chicken (Chicken, Pepper, Black)

Contains: Milk

Zedric's LLC, 9873 IH-10 West, San Antonio, TX 78230

Manufactured In A Facility That Also Processes: Milk, Egg, Wheat, Peanuts, Soy, Sesame, Cod, Salmon, Almond, Pecan, Mahi, Pine Nut



**Grilled Chicken Over
Cheesy Bacon Broccoli
Casserole Regular**

Nutrition Facts	
1 serving per container	
Serving size	(443g)
Amount Per Serving	
Calories	510
	% Daily Value*
Total Fat 19g	24%
Saturated Fat 8g	40%
Trans Fat 0g	
Cholesterol 175mg	58%
Sodium 730mg	32%
Total Carbohydrate 14g	5%
Dietary Fiber 4g	14%
Total Sugars 4g	
Includes 0g Added Sugars	0%
Sugar Alcohol 0g	
Protein 67g	
Vitamin D 0.5mcg	2%
Calcium 350mg	25%
Iron 2.8mg	15%
Potassium 410mg	8%

* The % Daily Value (DV) tells you how much a nutrient in a serving of food contributes to a daily diet. 2,000 calories a day is used for general nutrition advice.

Ingredients: 4 Oz Grilled Chicken (Chicken, Pepper, Black), Cheesy Bacon Broccoli Casserole Cooked (Buttered Broccoli (Broccoli, Butter (Cream, Natural Flavor), Pepper, Black), Steamed Cauliflower (Cauliflower), Fancy Cheese Sauce (Milk, Nonfat, Parmesan (Milk, Cheese Cultures, Salt, Enzymes), Mild Cheddar & Monterey Jack Cheese Blend, Cornstarch), Applegate Organics Uncured Reduced Sodium Sunday Bacon)

Contains: Milk

Zedric's LLC, 9873 IH-10 West, San Antonio, TX 78230

Manufactured In A Facility That Also Processes: Milk, Egg, Wheat, Peanuts, Soy, Sesame, Cod, Salmon, Almond, Pecan, Mahi, Pine Nut



**Grilled Chicken with
Moroccan CousCous
Small**

Nutrition Facts	
1 serving per container	
Serving size	(286g)
Amount Per Serving	
Calories	340
	% Daily Value*
Total Fat 12g	15%
Saturated Fat 3.5g	18%
Trans Fat 0g	
Cholesterol 85mg	28%
Sodium 320mg	14%
Total Carbohydrate 26g	9%
Dietary Fiber 4g	14%
Total Sugars 9g	
Includes 0g Added Sugars	0%
Sugar Alcohol 0g	
Protein 33g	
Vitamin D 0mcg	0%
Calcium 90mg	8%
Iron 2.5mg	15%
Potassium 410mg	8%

* The % Daily Value (DV) tells you how much a nutrient in a serving of food contributes to a daily diet. 2,000 calories a day is used for general nutrition advice.

Ingredients: 4 Oz Grilled Chicken (Chicken, Pepper, Black), Steamed Broccoli & Cauliflower (Buttered Broccoli (Broccoli, Butter (Cream, Natural Flavor), Pepper, Black), Steamed Cauliflower (Cauliflower), Cheese, Parmesan, Shredded, Chopped Garlic), Moroccan Couscous (Couscous, Cooked, Raisins, Pork Sausage (Pork, Water, Corn Syrup, <2% Of Pork Broth With Natural Flavorings, Salt, Dextrose, Spice, Paprika, Monosodium Glutamate, Flavorings, BHA, Propyl Gallate, Citric Acid), Pine Nuts, Butter (Cream, Natural Flavor), Garam Masala), Salsa Verde (Lemon Juice, Raw, Parsley, Fresh, Shallots, Raw, Roland Capers, Chopped Garlic, Canola And Olive Oil Blend (90/10), Anchovy Paste, Pepper, Black, Kosher Salt)

Contains: Milk, Anchovy, Pine Nut

Zedric's LLC, 9873 IH-10 West, San Antonio, TX 78230

Manufactured In A Facility That Also Processes: Milk, Egg, Wheat, Peanuts, Soy, Sesame, Cod, Salmon, Almond, Pecan, Mahi, Pine Nut

ZEDRIC'S ENTREES



Grilled Chicken with Moroccan CousCous Regular

Nutrition Facts	
1 serving per container	
Serving size	(479g)
Amount Per Serving	
Calories	600
% Daily Value*	
Total Fat 20g	26%
Saturated Fat 5g	25%
Trans Fat 0g	
Cholesterol 160mg	53%
Sodium 470mg	20%
Total Carbohydrate 42g	15%
Dietary Fiber 6g	21%
Total Sugars 15g	
Includes 0g Added Sugars	0%
Sugar Alcohol 0g	
Protein 62g	
Vitamin D 0mcg	0%
Calcium 140mg	10%
Iron 4.2mg	25%
Potassium 610mg	15%

* The % Daily Value (DV) tells you how much a nutrient in a serving of food contributes to a daily diet. 2,000 calories a day is used for general nutrition advice.

Ingredients: 4 Oz Grilled Chicken (Chicken, Pepper, Black), Moroccan Couscous (Couscous, Cooked), Raisins, Pork Sausage (Pork, Water, Corn Syrup, <2% Of: Pork Broth With Natural Flavorings, Salt, Dextrose, Spice, Paprika, Monosodium Glutamate, Flavorings, BHA, Propyl Gallate, Citric Acid), Pine Nuts, Butter (Cream, Natural Flavor), Garam Masala), Steamed Broccoli & Cauliflower (Buttered Broccoli (Broccoli), Butter (Cream, Natural Flavor), Pepper, Black), Steamed Cauliflower (Cauliflower), Cheese, Parmesan, Shredded, Chopped Garlic), Salsa Verde (Lemon Juice, Raw, Parsley, Fresh, Shallots, Raw, Roland Capers, Chopped Garlic, Canola And Olive Oil Blend (90/10), Anchovy Paste, Pepper, Black, Kosher Salt)

Contains: Milk, Anchovy, Pine Nut

Zedric's LLC, 9873 IH-10 West, San Antonio, TX 78230

Manufactured In A Facility That Also Processes: Milk, Egg, Wheat, Peanuts, Soy, Sesame, Cod, Salmon, Almond, Pecan, Mahi, Pine Nut



Grilled Mahi Mahi with Mediterranean Couscous Salad Small

Nutrition Facts	
1 serving per container	
Serving size	(300g)
Amount Per Serving	
Calories	340
% Daily Value*	
Total Fat 12g	15%
Saturated Fat 2.5g	13%
Trans Fat 0g	
Cholesterol 95mg	32%
Sodium 1080mg	47%
Total Carbohydrate 29g	11%
Dietary Fiber 6g	21%
Total Sugars 4g	
Includes 0g Added Sugars	0%
Sugar Alcohol 0g	
Protein 30g	
Vitamin D 0mcg	0%
Calcium 170mg	15%
Iron 3.4mg	20%
Potassium 160mg	4%

* The % Daily Value (DV) tells you how much a nutrient in a serving of food contributes to a daily diet. 2,000 calories a day is used for general nutrition advice.

Ingredients: Grilled Mahi Mahi 4 Oz (Mahi Mahi, Kosher Salt, Pepper, Black), Mediterranean Couscous Salad With Dressing (CousCous, Cooked (Couscous, Cooked), Mediterranean Couscous Salad (Tomatoes, Olives, Feta (Pasteurized Milk, Nonfat Milk, Salt, Cheese Culture, Enzymes, Calcium Chloride), Cucumber, Red Onion, Parsley), Mediterranean Salad Dressing (Vinegar, Red Wine, Olive Oil, Lemon Juice, Raw, Chopped Garlic, Spices, Oregano, Dried)), Grilled Broccolini (Broccolini, Pepper, Black, Kosher Salt), Salsa Verde (Lemon Juice, Raw, Parsley, Fresh, Shallots, Raw, Roland Capers, Chopped Garlic, Canola And Olive Oil Blend (90/10), Anchovy Paste, Pepper, Black, Kosher Salt)

Contains: Milk, Anchovy

Zedric's LLC, 9873 IH-10 West, San Antonio, TX 78230

Manufactured In A Facility That Also Processes: Milk, Egg, Wheat, Peanuts, Soy, Sesame, Cod, Salmon, Almond, Pecan, Mahi, Pine Nut



Grilled Mahi Mahi with Mediterranean Couscous Salad Regular

Nutrition Facts	
1 serving per container	
Serving size	(514g)
Amount Per Serving	
Calories	580
% Daily Value*	
Total Fat 21g	27%
Saturated Fat 5g	25%
Trans Fat 0g	
Cholesterol 185mg	62%
Sodium 1710mg	74%
Total Carbohydrate 42g	15%
Dietary Fiber 6g	21%
Total Sugars 5g	
Includes 0g Added Sugars	0%
Sugar Alcohol 0g	
Protein 54g	
Vitamin D 0.1mcg	0%
Calcium 230mg	20%
Iron 4.7mg	25%
Potassium 240mg	6%

* The % Daily Value (DV) tells you how much a nutrient in a serving of food contributes to a daily diet. 2,000 calories a day is used for general nutrition advice.

Ingredients: Grilled Mahi Mahi 4 Oz (Mahi Mahi, Kosher Salt, Pepper, Black), Mediterranean Couscous Salad With Dressing (CousCous, Cooked (Couscous, Cooked), Mediterranean Couscous Salad (Tomatoes, Olives, Feta (Pasteurized Milk, Nonfat Milk, Salt, Cheese Culture, Enzymes, Calcium Chloride), Cucumber, Red Onion, Parsley), Mediterranean Salad Dressing (Vinegar, Red Wine, Olive Oil, Lemon Juice, Raw, Chopped Garlic, Spices, Oregano, Dried)), Salsa Verde (Lemon Juice, Raw, Parsley, Fresh, Shallots, Raw, Roland Capers, Chopped Garlic, Canola And Olive Oil Blend (90/10), Anchovy Paste, Pepper, Black, Kosher Salt), Broccolini

Contains: Milk, Anchovy

Zedric's LLC, 9873 IH-10 West, San Antonio, TX 78230

Manufactured In A Facility That Also Processes: Milk, Egg, Wheat, Peanuts, Soy, Sesame, Cod, Salmon, Almond, Pecan, Mahi, Pine Nut



Grilled Salmon Small

Nutrition Facts	
1 serving per container	
Serving size	(286g)
Amount Per Serving	
Calories	270
% Daily Value*	
Total Fat 12g	15%
Saturated Fat 4g	20%
Trans Fat 0g	
Cholesterol 65mg	22%
Sodium 600mg	26%
Total Carbohydrate 14g	5%
Dietary Fiber 5g	18%
Total Sugars 6g	
Includes 0g Added Sugars	0%
Sugar Alcohol 0g	
Protein 28g	
Vitamin D 10.2mcg	50%
Calcium 120mg	10%
Iron 2.2mg	10%
Potassium 770mg	15%

* The % Daily Value (DV) tells you how much a nutrient in a serving of food contributes to a daily diet. 2,000 calories a day is used for general nutrition advice.

Ingredients: Buttered Green Beans (Beans, Green, Butter (Cream, Natural Flavor), Pepper, Black), Grilled Salmon 4oz (Fish, Salmon, Coho, Wild, Raw, Kosher Salt, Pepper, Black), Salsa Verde (Lemon Juice, Raw, Parsley, Fresh, Shallots, Raw, Roland Capers, Chopped Garlic, Canola And Olive Oil Blend (90/10), Anchovy Paste, Pepper, Black, Kosher Salt)

Contains: Milk, Anchovy

Zedric's LLC, 9873 IH-10 West, San Antonio, TX 78230

Manufactured In A Facility That Also Processes: Milk, Egg, Wheat, Peanuts, Soy, Sesame, Cod, Salmon, Almond, Pecan, Mahi, Pine Nut

ZEDRIC'S ENTREES



Grilled Salmon Regular

Nutrition Facts	
1 serving per container	
Serving size	(427g)
Amount Per Serving	
Calories	400
% Daily Value*	
Total Fat 18g	23%
Saturated Fat 6g	30%
Trans Fat 0g	
Cholesterol 95mg	32%
Sodium 630mg	27%
Total Carbohydrate 21g	8%
Dietary Fiber 8g	29%
Total Sugars 9g	
Includes 0g Added Sugars	0%
Sugar Alcohol 0g	
Protein 42g	
Vitamin D 15.4mcg	80%
Calcium 180mg	15%
Iron 3mg	15%
Potassium 1130mg	25%

* The % Daily Value (DV) tells you how much a nutrient in a serving of food contributes to a daily diet. 2,000 calories a day is used for general nutrition advice.

Ingredients: Buttered Green Beans (Beans, Green, Butter (Cream, Natural Flavor), Pepper, Black), Grilled Salmon 6oz (Fish, Salmon, Coho, Wild, Raw, Kosher Salt, Pepper, Black), Salsa Verde (Lemon Juice, Raw, Parsley, Fresh, Shallots, Raw, Roland Capers, Chopped Garlic, Canola And Olive Oil Blend (90/10), Anchovy Paste, Pepper, Black, Kosher Salt)

Contains: Milk, Anchovy

Zedric's LLC, 9873 IH-10 West, San Antonio, TX 78230

Manufactured In A Facility That Also Processes: Milk, Egg, Wheat, Peanuts, Soy, Sesame, Cod, Salmon, Almond, Pecan, Mahi, Pine Nut



Korean Beef BBQ Small

Nutrition Facts	
1 serving per container	
Serving size	(284g)
Amount Per Serving	
Calories	330
% Daily Value*	
Total Fat 7g	9%
Saturated Fat 3g	15%
Trans Fat 0g	
Cholesterol 65mg	22%
Sodium 360mg	16%
Total Carbohydrate 53g	19%
Dietary Fiber 1g	4%
Total Sugars 7g	
Includes 5g Added Sugars	10%
Protein 27g	
Vitamin D 0.1mcg	0%
Calcium 40mg	4%
Iron 2.4mg	15%
Potassium 440mg	10%

* The % Daily Value (DV) tells you how much a nutrient in a serving of food contributes to a daily diet. 2,000 calories a day is used for general nutrition advice.

Ingredients: Buttered Jasmine Rice With Peas & Carrots (Water, Jasmine Long Grain White Rice - Golden Star, Peas & Carrots (Peas And Carrots, Frozen, Unprepared), Butter (Cream, Natural Flavor), Kosher Salt), Korean Beef Sirloin (Sautéed Diced Sirloin Beef (Beef, Top Sirloin, Steak, Separable Lean Only, Trimmed To 1/8" Fat, Select, Raw, Pepper, Black), Korean BBQ Marinade/Sauce (Brown Sugar, Tamari Gluten Free Soy Sauce, Onions, Green, Chopped Garlic, Sesame Oil, Chili Flakes, Sesame Seeds, Pepper, Black))

Contains: Milk, Soy, Sesame

Zedric's LLC, 9873 IH-10 West, San Antonio, TX 78230

Manufactured In A Facility That Also Processes: Milk, Egg, Wheat, Peanuts, Soy, Sesame, Cod, Salmon, Almond, Pecan, Mahi, Pine Nut



Korean Beef BBQ Regular

Nutrition Facts	
1 serving per container	
Serving size	(454g)
Amount Per Serving	
Calories	530
% Daily Value*	
Total Fat 11g	14%
Saturated Fat 4.5g	23%
Trans Fat 0g	
Cholesterol 100mg	33%
Sodium 560mg	24%
Total Carbohydrate 87g	32%
Dietary Fiber 2g	7%
Total Sugars 10g	
Includes 7g Added Sugars	14%
Protein 42g	
Vitamin D 0.1mcg	0%
Calcium 70mg	6%
Iron 3.7mg	20%
Potassium 680mg	15%

* The % Daily Value (DV) tells you how much a nutrient in a serving of food contributes to a daily diet. 2,000 calories a day is used for general nutrition advice.

Ingredients: Buttered Jasmine Rice With Peas & Carrots (Water, Jasmine Long Grain White Rice - Golden Star, Peas & Carrots (Peas And Carrots, Frozen, Unprepared), Butter (Cream, Natural Flavor), Kosher Salt), Korean Beef Sirloin (Sautéed Diced Sirloin Beef (Beef, Top Sirloin, Steak, Separable Lean Only, Trimmed To 1/8" Fat, Select, Raw, Pepper, Black), Korean BBQ Marinade/Sauce (Brown Sugar, Tamari Gluten Free Soy Sauce, Onions, Green, Chopped Garlic, Sesame Oil, Chili Flakes, Sesame Seeds, Pepper, Black))

Contains: Milk, Soy, Sesame

Zedric's LLC, 9873 IH-10 West, San Antonio, TX 78230

Manufactured In A Facility That Also Processes: Milk, Egg, Wheat, Peanuts, Soy, Sesame, Cod, Salmon, Almond, Pecan, Mahi, Pine Nut



Nutrition Facts

1 serving per container	
Serving size	(312g)
Amount Per Serving	
Calories	350
% Daily Value*	
Total Fat 19g	24%
Saturated Fat 11g	55%
Trans Fat 0.5g	
Cholesterol 105mg	35%
Sodium 200mg	9%
Total Carbohydrate 18g	7%
Dietary Fiber 5g	18%
Total Sugars 9g	
Includes 1g Added Sugars	2%
Sugar Alcohol 0g	
Protein 29g	
Vitamin D 0.1mcg	0%
Calcium 100mg	8%
Iron 2.9mg	15%
Potassium 910mg	20%

* The % Daily Value (DV) tells you how much a nutrient in a serving of food contributes to a daily diet. 2,000 calories a day is used for general nutrition advice.



Roasted Turkey with Apricot Sauce Small

Nutrition Facts	
1 serving per container	
Serving size	(278g)
Amount Per Serving	
Calories	350
% Daily Value*	
Total Fat 10g	13%
Saturated Fat 2.5g	13%
Trans Fat 0g	
Cholesterol 95mg	32%
Sodium 230mg	10%
Total Carbohydrate 28g	10%
Dietary Fiber 4g	14%
Total Sugars 18g	
Includes 8g Added Sugars	16%
Sugar Alcohol 0g	
Protein 37g	
Vitamin D 0.5mcg	2%
Calcium 180mg	15%
Iron 2.7mg	15%
Potassium 650mg	15%

* The % Daily Value (DV) tells you how much a nutrient in a serving of food contributes to a daily diet. 2,000 calories a day is used for general nutrition advice.

Ingredients: Turkey, Fryer-Roasters, Breast, Meat Only, Cooked, Roasted, Cauliflower "Mac N Cheese" (Steamed Cauliflower (Cauliflower), Fancy Cheese Sauce (Milk, Nonfat, Parmesan (Milk, Cheese Cultures, Salt, Enzymes), Mild Cheddar & Monterey Jack Cheese Blend, Cornstarch)), Balsamic Glazed Brussel Sprout Mix (Brussel Sprouts, Ocean Spray Organic Dried Cranberries, Pecan Pieces, Syrup, Maple, Balsamic Vinegar, Black Peppercorn), Jams And Preserves, Apricot

Contains: Milk, Pecan

Zedric's LLC, 9873 IH-10 West, San Antonio, TX 78230

Manufactured In A Facility That Also Processes: Milk, Egg, Wheat, Peanuts, Soy, Sesame, Cod, Salmon, Almond, Pecan, Mahi, Pine Nut



Roasted Turkey with Apricot Sauce Regular

Nutrition Facts	
1 serving per container	
Serving size	(468g)
Amount Per Serving	
Calories	600
% Daily Value*	
Total Fat 16g	21%
Saturated Fat 4g	20%
Trans Fat 0g	
Cholesterol 180mg	60%
Sodium 350mg	15%
Total Carbohydrate 45g	16%
Dietary Fiber 7g	25%
Total Sugars 29g	
Includes 13g Added Sugars	26%
Sugar Alcohol 0g	
Protein 70g	
Vitamin D 0.7mcg	4%
Calcium 260mg	20%
Iron 4.9mg	25%
Potassium 1140mg	25%

* The % Daily Value (DV) tells you how much a nutrient in a serving of food contributes to a daily diet. 2,000 calories a day is used for general nutrition advice.

Ingredients: Turkey, Fryer-Roasters, Breast, Meat Only, Cooked, Roasted, Balsamic Glazed Brussel Sprout Mix (Brussel Sprouts, Ocean Spray Organic Dried Cranberries, Pecan Pieces, Syrup, Maple, Balsamic Vinegar, Black Peppercorn), Cauliflower "Mac N Cheese" (Steamed Cauliflower (Cauliflower), Fancy Cheese Sauce (Milk, Nonfat, Parmesan (Milk, Cheese Cultures, Salt, Enzymes), Mild Cheddar & Monterey Jack Cheese Blend, Cornstarch)), Jams And Preserves, Apricot

Contains: Milk, Pecan

Zedric's LLC, 9873 IH-10 West, San Antonio, TX 78230

Manufactured In A Facility That Also Processes: Milk, Egg, Wheat, Peanuts, Soy, Sesame, Cod, Salmon, Almond, Pecan, Mahi, Pine Nut



Rustic Chicken Parmesan Small

Nutrition Facts	
1 serving per container	
Serving size	(242g)
Amount Per Serving	
Calories	340
% Daily Value*	
Total Fat 7g	9%
Saturated Fat 1.5g	8%
Trans Fat 0g	
Cholesterol 75mg	25%
Sodium 320mg	14%
Total Carbohydrate 34g	12%
Dietary Fiber 3g	11%
Total Sugars 3g	
Includes <1g Added Sugars	1%
Protein 34g	
Vitamin D 0mcg	0%
Calcium 160mg	10%
Iron 2.1mg	10%
Potassium 240mg	6%

* The % Daily Value (DV) tells you how much a nutrient in a serving of food contributes to a daily diet. 2,000 calories a day is used for general nutrition advice.

Ingredients: Chicken Parmesan 4oz (Chicken, Marinara Sauce (Tomatoes, Crushed, Canned, Yellow Onion, Carrots, Basil, Olive Oil, Extra Virgin, Kosher Salt, Chopped Garlic), Cheese, Mozzarella, Part Skim Milk, Almond Meal, Pepper, Black), Gluten-Free Penne Pasta (Mixed) (Zerega Gluten Free Penne Pasta Cooked (Corn Flour, Rice Flour, & Triglycerides Of Fatty Acids), Marinara Sauce, Angela Mia, Spinach, Raw, Red Onion, Chopped Garlic)

Contains: Milk, Almond

Zedric's LLC, 9873 IH-10 West, San Antonio, TX 78230

Manufactured In A Facility That Also Processes: Milk, Egg, Wheat, Peanuts, Soy, Sesame, Cod, Salmon, Almond, Pecan, Mahi, Pine Nut

ZEDRIC'S ENTREES



**Rustic Chicken
Parmesan Regular**

Nutrition Facts	
1 serving per container	
Serving size	(427g)
Amount Per Serving	
Calories	590
% Daily Value*	
Total Fat 14g	18%
Saturated Fat 3g	15%
Trans Fat 0g	
Cholesterol 150mg	50%
Sodium 560mg	24%
Total Carbohydrate 48g	17%
Dietary Fiber 5g	18%
Total Sugars 5g	
Includes <1g Added Sugars	1%
Protein 65g	
Vitamin D 0.1mcg	0%
Calcium 300mg	25%
Iron 3.8mg	20%
Potassium 370mg	8%

*The % Daily Value (DV) tells you how much a nutrient in a serving of food contributes to a daily diet. 2,000 calories a day is used for general nutrition advice.

Ingredients: Chicken Parmesan 4oz (Chicken, Marinara Sauce (Tomatoes, Crushed, Canned, Yellow Onion, Carrots, Basil, Olive Oil, Extra Virgin, Kosher Salt, Chopped Garlic), Cheese, Mozzarella, Part Skim Milk, Almond Meal, Pepper, Black), Gluten-Free Penne Pasta (Mixed) (Zerega Gluten Free Penne Pasta Cooked (Corn Flour, Rice Flour, & Triglycerides Of Fatty Acids), Marinara Sauce, Angela Mia, Spinach, Raw, Red Onion, Chopped Garlic)

Contains: Milk, Almond

Zedric's LLC, 9873 IH-10 West, San Antonio, TX 78230

Manufactured In A Facility That Also Processes: Milk, Egg, Wheat, Peanuts, Soy, Sesame, Cod, Salmon, Almond, Pecan, Mahi, Pine Nut



Salisbury Steak Small

Nutrition Facts	
1 serving per container	
Serving size	(243g)
Amount Per Serving	
Calories	280
% Daily Value*	
Total Fat 11g	14%
Saturated Fat 5g	25%
Trans Fat 0g	
Cholesterol 85mg	28%
Sodium 390mg	17%
Total Carbohydrate 17g	6%
Dietary Fiber 3g	11%
Total Sugars 3g	
Includes 0g Added Sugars	0%
Sugar Alcohol 0g	
Protein 28g	
Vitamin D 0.1mcg	0%
Calcium 430mg	35%
Iron 3.2mg	20%
Potassium 500mg	10%

*The % Daily Value (DV) tells you how much a nutrient in a serving of food contributes to a daily diet. 2,000 calories a day is used for general nutrition advice.

Ingredients: Salisbury Steak 4oz (Beef, Ground, 95% Lean Meat / 5% Fat, Raw, Pepper, Black), Potatoes, Skim Milk, Butter, Natural Sour Cream, Salt, Spice, Buttered Green Beans (Beans, Green, Butter (Cream, Natural Flavor), Pepper, Black), Madeira Sauce (Water, Mushrooms, White, Raw, Wine Marsala, Dry, Chopped Garlic, Argo Corn Starch, Beef Base, Gluten Free, Pepper, Black, Thyme, Fresh)

Contains: Milk

Zedric's LLC, 9873 IH-10 West, San Antonio, TX 78230

Manufactured In A Facility That Also Processes: Milk, Egg, Wheat, Peanuts, Soy, Sesame, Cod, Salmon, Almond, Pecan, Mahi, Pine Nut



Salisbury Steak Regular

Nutrition Facts	
1 serving per container	
Serving size	(373g)
Amount Per Serving	
Calories	460
% Daily Value*	
Total Fat 17g	22%
Saturated Fat 8g	40%
Trans Fat 0.5g	
Cholesterol 155mg	52%
Sodium 490mg	21%
Total Carbohydrate 21g	8%
Dietary Fiber 5g	18%
Total Sugars 4g	
Includes 0g Added Sugars	0%
Sugar Alcohol 0g	
Protein 53g	
Vitamin D 0.2mcg	0%
Calcium 460mg	35%
Iron 6.2mg	35%
Potassium 960mg	20%

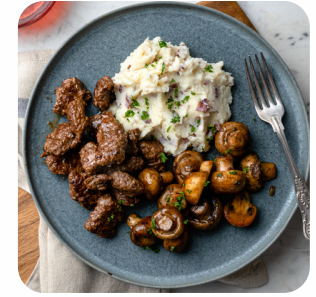
*The % Daily Value (DV) tells you how much a nutrient in a serving of food contributes to a daily diet. 2,000 calories a day is used for general nutrition advice.

Ingredients: Salisbury Steak 4oz (Beef, Ground, 95% Lean Meat / 5% Fat, Raw, Pepper, Black), Potatoes, Skim Milk, Butter, Natural Sour Cream, Salt, Spice, Buttered Green Beans (Beans, Green, Butter (Cream, Natural Flavor), Pepper, Black), Madeira Sauce (Water, Mushrooms, White, Raw, Wine Marsala, Dry, Chopped Garlic, Argo Corn Starch, Beef Base, Gluten Free, Pepper, Black, Thyme, Fresh)

Contains: Milk

Zedric's LLC, 9873 IH-10 West, San Antonio, TX 78230

Manufactured In A Facility That Also Processes: Milk, Egg, Wheat, Peanuts, Soy, Sesame, Cod, Salmon, Almond, Pecan, Mahi, Pine Nut



Seared Beef Small

Nutrition Facts	
1 serving per container	
Serving size	(319g)
Amount Per Serving	
Calories	330
% Daily Value*	
Total Fat 14g	18%
Saturated Fat 7g	35%
Trans Fat 0g	
Cholesterol 90mg	30%
Sodium 490mg	21%
Total Carbohydrate 22g	8%
Dietary Fiber 3g	11%
Total Sugars 6g	
Includes 2g Added Sugars	4%
Sugar Alcohol 0g	
Protein 30g	
Vitamin D 0.2mcg	0%
Calcium 560mg	45%
Iron 2.5mg	15%
Potassium 640mg	15%

*The % Daily Value (DV) tells you how much a nutrient in a serving of food contributes to a daily diet. 2,000 calories a day is used for general nutrition advice.

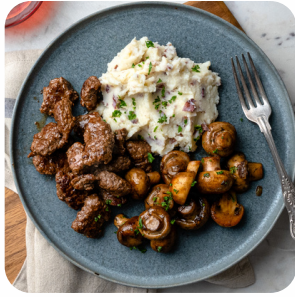
Ingredients: Sautéed Diced Sirloin Beef (Beef, Top Sirloin, Steak, Separable Lean Only, Trimmed To 1/8" Fat, Select, Raw, Pepper, Black), Potatoes, Skim Milk, Butter, Natural Sour Cream, Salt, Spice, Oven Roasted Whole Mushrooms (Mushrooms, White, Raw, Onions, Yellow, Butter (Cream, Natural Flavor), Balsamic Vinegar, Chopped Garlic, Thyme, Pepper, Black), Balsamic Glaze (Balsamic Vinegar, Honey, Chopped Garlic, Kosher Salt)

Contains: Milk

Zedric's LLC, 9873 IH-10 West, San Antonio, TX 78230

Manufactured In A Facility That Also Processes: Milk, Egg, Wheat, Peanuts, Soy, Sesame, Cod, Salmon, Almond, Pecan, Mahi, Pine Nut

ZEDRIC'S ENTREES



Seared Beef Regular

Nutrition Facts	
1 serving per container	
Serving size	(489g)
Amount Per Serving	
Calories	510
% Daily Value*	
Total Fat 22g	28%
Saturated Fat 11g	55%
Trans Fat 0g	
Cholesterol 135mg	45%
Sodium 710mg	31%
Total Carbohydrate 32g	12%
Dietary Fiber 4g	14%
Total Sugars 8g	
Includes 2g Added Sugars	4%
Sugar Alcohol 0g	
Protein 45g	
Vitamin D 0.3mcg	2%
Calcium 850mg	70%
Iron 3.8mg	20%
Potassium 990mg	20%

* The % Daily Value (DV) tells you how much a nutrient in a serving of food contributes to a daily diet. 2,000 calories a day is used for general nutrition advice.

Ingredients: Sautéed Diced Sirloin Beef (Beef, Top Sirloin, Steak, Separable Lean Only, Trimmed To 1/8" Fat, Select, Raw, Pepper, Black), Potatoes, Skim Milk, Butter, Natural Sour Cream, Salt, Spice, Oven Roasted Whole Mushrooms (Mushrooms, White, Raw, Onions, Yellow, Butter (Cream, Natural Flavor), Balsamic Vinegar, Chopped Garlic, Thyme, Pepper, Black), Balsamic Glaze (Balsamic Vinegar, Honey, Chopped Garlic, Kosher Salt)

Contains: Milk

Zedric's LLC, 9873 IH-10 West, San Antonio, TX 78230

Manufactured In A Facility That Also Processes: Milk, Egg, Wheat, Peanuts, Soy, Sesame, Cod, Salmon, Almond, Pecan, Mahi, Pine Nut



Smoked Brisket Plate Small

Nutrition Facts	
1 serving per container	
Serving size	(255g)
Amount Per Serving	
Calories	300
% Daily Value*	
Total Fat 12g	15%
Saturated Fat 3.5g	18%
Trans Fat 0g	
Cholesterol 60mg	20%
Sodium 360mg	16%
Total Carbohydrate 23g	8%
Dietary Fiber 4g	14%
Total Sugars 14g	
Includes 8g Added Sugars	16%
Sugar Alcohol 0g	
Protein 26g	
Vitamin D 0.3mcg	2%
Calcium 190mg	15%
Iron 2.5mg	15%
Potassium 660mg	15%

* The % Daily Value (DV) tells you how much a nutrient in a serving of food contributes to a daily diet. 2,000 calories a day is used for general nutrition advice.

Ingredients: Seasoned Brisket (COOKED) (Beef, Top Sirloin, Steak, Separable Lean Only, Trimmed To 1/8" Fat, Select, Raw, Kosher Salt, Pepper, Black), Cauliflower "Mac N Cheese" (Steamed Cauliflower (Cauliflower), Fancy Cheese Sauce (Milk, Nonfat, Parmesan (Milk, Cheese Cultures, Salt, Enzymes), Mild Cheddar & Monterey Jack Cheese Blend, Cornstarch)), Balsamic Glazed Brussel Sprout Mix (Brussel Sprouts, Ocean Spray Organic Dried Cranberries, Pecan Pieces, Syrup, Maple, Balsamic Vinegar, Black Peppercorn)

Contains: Milk, Pecan

Zedric's LLC, 9873 IH-10 West, San Antonio, TX 78230

Manufactured In A Facility That Also Processes: Milk, Egg, Wheat, Peanuts, Soy, Sesame, Cod, Salmon, Almond, Pecan, Mahi, Pine Nut



Smoked Brisket Plate Regular

Nutrition Facts	
1 serving per container	
Serving size	(425g)
Amount Per Serving	
Calories	500
% Daily Value*	
Total Fat 20g	26%
Saturated Fat 6g	30%
Trans Fat 0g	
Cholesterol 100mg	33%
Sodium 590mg	26%
Total Carbohydrate 38g	14%
Dietary Fiber 7g	25%
Total Sugars 23g	
Includes 13g Added Sugars	26%
Sugar Alcohol 0g	
Protein 43g	
Vitamin D 0.5mcg	2%
Calcium 310mg	25%
Iron 4.2mg	25%
Potassium 1100mg	25%

* The % Daily Value (DV) tells you how much a nutrient in a serving of food contributes to a daily diet. 2,000 calories a day is used for general nutrition advice.

Ingredients: Seasoned Brisket (COOKED) (Beef, Top Sirloin, Steak, Separable Lean Only, Trimmed To 1/8" Fat, Select, Raw, Kosher Salt, Pepper, Black), Cauliflower "Mac N Cheese" (Steamed Cauliflower (Cauliflower), Fancy Cheese Sauce (Milk, Nonfat, Parmesan (Milk, Cheese Cultures, Salt, Enzymes), Mild Cheddar & Monterey Jack Cheese Blend, Cornstarch)), Balsamic Glazed Brussel Sprout Mix (Brussel Sprouts, Ocean Spray Organic Dried Cranberries, Pecan Pieces, Syrup, Maple, Balsamic Vinegar, Black Peppercorn)

Contains: Milk, Pecan

Zedric's LLC, 9873 IH-10 West, San Antonio, TX 78230

Manufactured In A Facility That Also Processes: Milk, Egg, Wheat, Peanuts, Soy, Sesame, Cod, Salmon, Almond, Pecan, Mahi, Pine Nut



Soy Ginger Glazed Salmon with Stir Fried Noodles Small

Nutrition Facts	
1 serving per container	
Serving size	(261g)
Amount Per Serving	
Calories	340
% Daily Value*	
Total Fat 10g	13%
Saturated Fat 2g	10%
Trans Fat 0g	
Cholesterol 50mg	17%
Sodium 740mg	32%
Total Carbohydrate 31g	11%
Dietary Fiber 2g	7%
Total Sugars 10g	
Includes 8g Added Sugars	16%
Sugar Alcohol 0g	
Protein 27g	
Vitamin D 10.3mcg	50%
Calcium 80mg	6%
Iron 1.8mg	10%
Potassium 670mg	15%

* The % Daily Value (DV) tells you how much a nutrient in a serving of food contributes to a daily diet. 2,000 calories a day is used for general nutrition advice.

Ingredients: Stir Fried Noodles (Rice Noodles Cooked (Rice Noodles, Dry), Korean BBQ Marinade/Sauce (Brown Sugar, Tamari Gluten Free Soy Sauce, Onions, Green, Chopped Garlic, Sesame Oil, Chili Flakes, Sesame Seeds, Pepper, Black), Onions, Yellow, Mushrooms, White, Raw, Celery, Julienne Carrots), Baked Salmon 4oz (Fish, Salmon, Coho, Wild, Raw, Kosher Salt, Pepper, Black), Korean BBQ Marinade/Sauce (Brown Sugar, Tamari Gluten Free Soy Sauce, Onions, Green, Chopped Garlic, Sesame Oil, Chili Flakes, Sesame Seeds, Pepper, Black)

Contains: Milk, Soy, Sesame, Salmon

Zedric's LLC, 9873 IH-10 West, San Antonio, TX 78230

Manufactured In A Facility That Also Processes: Milk, Egg, Wheat, Peanuts, Soy, Sesame, Cod, Salmon, Almond, Pecan, Mahi, Pine Nut

ZEDRIC'S ENTREES



Soy Ginger Glazed Salmon with Stir Fried Noodles Regular

Nutrition Facts	
1 serving per container	
Serving size	(407g)
Amount Per Serving	
Calories	520
% Daily Value*	
Total Fat 16g	21%
Saturated Fat 3g	15%
<i>Trans</i> Fat 0g	
Cholesterol 75mg	25%
Sodium 980mg	43%
Total Carbohydrate 50g	18%
Dietary Fiber 3g	11%
Total Sugars 16g	
Includes 14g Added Sugars	28%
Sugar Alcohol 0g	
Protein 41g	
Vitamin D 15.4mcg	80%
Calcium 120mg	10%
Iron 2.8mg	15%
Potassium 1010mg	20%

* The % Daily Value (DV) tells you how much a nutrient in a serving of food contributes to a daily diet. 2,000 calories a day is used for general nutrition advice.

Ingredients: Stir Fried Noodles (Rice Noodles Cooked (Rice Noodles, Dry), Korean BBQ Marinade/Sauce (Brown Sugar, Tamari Gluten Free Soy Sauce, Onions, Green, Chopped Garlic, Sesame Oil, Chili Flakes, Sesame Seeds, Pepper, Black), Onions, Yellow, Mushrooms, White, Raw, Celery, Julienne Carrots), Zedric's Salmon 6oz (Fish, Salmon, Coho, Wild, Raw, Kosher Salt, Pepper, Black), Korean BBQ Marinade/Sauce (Brown Sugar, Tamari Gluten Free Soy Sauce, Onions, Green, Chopped Garlic, Sesame Oil, Chili Flakes, Sesame Seeds, Pepper, Black)

Contains: Soy, Sesame, Salmon

Zedric's LLC, 9873 IH-10 West, San Antonio, TX 78230

Manufactured In A Facility That Also Processes: Milk, Egg, Wheat, Peanuts, Soy, Sesame, Cod, Salmon, Almond, Pecan, Mahi, Pine Nut



Spicy Beef Stir-Fry Over Wok Fried Cabbage Small

Nutrition Facts	
1 serving per container	
Serving size	(340g)
Amount Per Serving	
Calories	330
% Daily Value*	
Total Fat 20g	26%
Saturated Fat 4g	20%
<i>Trans</i> Fat 0g	
Cholesterol 40mg	13%
Sodium 440mg	19%
Total Carbohydrate 21g	8%
Dietary Fiber 5g	18%
Total Sugars 8g	
Includes 2g Added Sugars	4%
Sugar Alcohol 0g	
Protein 18g	
Vitamin D 0.1mcg	0%
Calcium 90mg	8%
Iron 3.4mg	20%
Potassium 670mg	15%

* The % Daily Value (DV) tells you how much a nutrient in a serving of food contributes to a daily diet. 2,000 calories a day is used for general nutrition advice.

Ingredients: Szechuan Beef Bulk Recipe (Beef, Ground, 95% Lean Meat / 5% Fat, Raw, Szechuan Sauce Bulk (Water, Soybeans, Salt, Alcohol (To Preserve Freshness), Rice Vinegar, Lactic Acid., Water, Vinegar, Red Wine, Cornstarch, Brown Sugar, Chopped Garlic, Ginger Root, Raw, Chili Flakes), Cabbage, Raw, Onion, Celery, Mushrooms, White, Raw, Julienne Carrots, Onions, Green, Chopped Garlic, Sesame Seed Oil, Chili Extract, Paprika, Oleoresin, Ginger Root, Raw), Sauteed Cabbage & Yellow Onion (Cabbage, Raw, Onions, Yellow, Olive Oil)

Contains: Soy

Zedric's LLC, 9873 IH-10 West, San Antonio, TX 78230

Manufactured In A Facility That Also Processes: Milk, Egg, Wheat, Peanuts, Soy, Sesame, Cod, Salmon, Almond, Pecan, Mahi, Pine Nut



Spicy Beef Stir-Fry Over Wok Fried Cabbage Regular

Nutrition Facts	
1 serving per container	
Serving size	(567g)
Amount Per Serving	
Calories	560
% Daily Value*	
Total Fat 34g	44%
Saturated Fat 6g	30%
<i>Trans</i> Fat 0g	
Cholesterol 65mg	22%
Sodium 730mg	32%
Total Carbohydrate 35g	13%
Dietary Fiber 9g	32%
Total Sugars 13g	
Includes 3g Added Sugars	6%
Sugar Alcohol 0g	
Protein 30g	
Vitamin D 0.1mcg	0%
Calcium 160mg	10%
Iron 5.7mg	30%
Potassium 1110mg	25%

* The % Daily Value (DV) tells you how much a nutrient in a serving of food contributes to a daily diet. 2,000 calories a day is used for general nutrition advice.

Ingredients: Szechuan Beef Bulk Recipe (Beef, Ground, 95% Lean Meat / 5% Fat, Raw, Szechuan Sauce Bulk (Water, Soybeans, Salt, Alcohol (To Preserve Freshness), Rice Vinegar, Lactic Acid., Water, Vinegar, Red Wine, Cornstarch, Brown Sugar, Chopped Garlic, Ginger Root, Raw, Chili Flakes), Cabbage, Raw, Onion, Celery, Mushrooms, White, Raw, Julienne Carrots, Onions, Green, Chopped Garlic, Sesame Seed Oil, Chili Extract, Paprika, Oleoresin, Ginger Root, Raw), Sauteed Cabbage & Yellow Onion (Cabbage, Raw, Onions, Yellow, Olive Oil)

Contains: Soy

Zedric's LLC, 9873 IH-10 West, San Antonio, TX 78230

Manufactured In A Facility That Also Processes: Milk, Egg, Wheat, Peanuts, Soy, Sesame, Cod, Salmon, Almond, Pecan, Mahi, Pine Nut



Szechuan Beef Over Rice Noodles Small

Nutrition Facts	
1 serving per container	
Serving size	(298g)
Amount Per Serving	
Calories	300
% Daily Value*	
Total Fat 3.5g	4%
Saturated Fat 1.5g	8%
<i>Trans</i> Fat 0g	
Cholesterol 35mg	12%
Sodium 430mg	19%
Total Carbohydrate 48g	17%
Dietary Fiber 3g	11%
Total Sugars 4g	
Includes 2g Added Sugars	4%
Sugar Alcohol 0g	
Protein 16g	
Vitamin D 0.1mcg	0%
Calcium 50mg	4%
Iron 2.9mg	15%
Potassium 400mg	8%

* The % Daily Value (DV) tells you how much a nutrient in a serving of food contributes to a daily diet. 2,000 calories a day is used for general nutrition advice.

Ingredients: Szechuan Beef Bulk Recipe (Beef, Ground, 95% Lean Meat / 5% Fat, Raw, Szechuan Sauce Bulk (Water, Soybeans, Salt, Alcohol (To Preserve Freshness), Rice Vinegar, Lactic Acid., Water, Vinegar, Red Wine, Cornstarch, Brown Sugar, Chopped Garlic, Ginger Root, Raw, Chili Flakes), Cabbage, Raw, Onion, Celery, Mushrooms, White, Raw, Julienne Carrots, Onions, Green, Chopped Garlic, Sesame Seed Oil, Chili Extract, Paprika, Oleoresin, Ginger Root, Raw), Rice Noodles Cooked (Rice Noodles, Dry), Cilantro Leaves, Raw, Onions, Green

Contains: Soy

Zedric's LLC, 9873 IH-10 West, San Antonio, TX 78230

Manufactured In A Facility That Also Processes: Milk, Egg, Wheat, Peanuts, Soy, Sesame, Cod, Salmon, Almond, Pecan, Mahi, Pine Nut

ZEDRIC'S ENTREES



Szechuan Beef Over Rice Noodles Regular

Nutrition Facts	
1 serving per container	
Serving size	(439g)
Amount Per Serving	
Calories	440
<small>% Daily Value*</small>	
Total Fat 5g	6%
Saturated Fat 2g	10%
Trans Fat 0g	
Cholesterol 55mg	18%
Sodium 670mg	29%
Total Carbohydrate 69g	25%
Dietary Fiber 4g	14%
Total Sugars 6g	
Includes 2g Added Sugars	4%
Sugar Alcohol 0g	
Protein 25g	
Vitamin D 0.1mcg	0%
Calcium 70mg	6%
Iron 4.4mg	25%
Potassium 610mg	15%

Ingredients: Szechuan Beef Bulk Recipe (Beef, Ground, 95% Lean Meat / 5% Fat, Raw, Szechuan Sauce Bulk (Water, Soybeans, Salt, Alcohol (To Preserve Freshness), Rice Vinegar, Lactic Acid., Water, Vinegar, Red Wine, Cornstarch, Brown Sugar, Chopped Garlic, Ginger Root, Raw, Chili Flakes), Cabbage, Raw, Onion, Celery, Mushrooms, White, Raw, Julienne Carrots, Onions, Green, Chopped Garlic, Sesame Seed Oil, Chili Extract, Paprika, Oleoresin, Ginger Root, Raw), Rice Noodles Cooked (Rice Noodles, Dry), Cilantro Leaves, Raw, Onions, Green

Contains: Soy

Zedric's LLC, 9873 IH-10 West, San Antonio, TX 78230

Manufactured In A Facility That Also Processes: Milk, Egg, Wheat, Peanuts, Soy, Sesame, Cod, Salmon, Almond, Pecan, Mahi, Pine Nut



Texas Style Turkey Chili Bowl

Nutrition Facts	
1 serving per container	
Serving size	(439g)
Amount Per Serving	
Calories	420
<small>% Daily Value*</small>	
Total Fat 21g	27%
Saturated Fat 8g	40%
Trans Fat 0g	
Cholesterol 125mg	42%
Sodium 460mg	20%
Total Carbohydrate 16g	6%
Dietary Fiber 3g	11%
Total Sugars 6g	
Includes 0g Added Sugars	0%
Protein 41g	
Vitamin D 0.1mcg	0%
Calcium 240mg	20%
Iron 4.9mg	25%
Potassium 480mg	10%

Ingredients: Texas Style Turkey Chili Bulk (Ground Turkey Raw 95% Lean, Tomatoes, Crushed, Water, Onion, Poblano Pepper, Olive Oil, Extra Virgin, Chopped Garlic, Chili Powder, Ground Cumin, Paprika, Pepper, Black), Sour Cream (Cultured Cream, Skim Milk, Vitamin A Palmitate), Mild Cheddar & Monterey Jack Cheese Blend

Contains: Milk

Zedric's LLC, 9873 IH-10 West, San Antonio, TX 78230

Manufactured In A Facility That Also Processes: Milk, Egg, Wheat, Peanuts, Soy, Sesame, Cod, Salmon, Almond, Pecan, Mahi, Pine Nut



Turkey Ragù Over Spaghetti Squash Small

Nutrition Facts	
1 serving per container	
Serving size	(356g)
Amount Per Serving	
Calories	290
<small>% Daily Value*</small>	
Total Fat 15g	19%
Saturated Fat 6g	30%
Trans Fat 0g	
Cholesterol 60mg	20%
Sodium 650mg	28%
Total Carbohydrate 19g	7%
Dietary Fiber 4g	14%
Total Sugars 8g	
Includes 0g Added Sugars	0%
Protein 22g	
Vitamin D 0.1mcg	0%
Calcium 270mg	20%
Iron 2.9mg	15%
Potassium 530mg	10%

Ingredients: Turkey Ragù Mix New Cooked (Marinara Sauce (Tomatoes, Crushed, Canned, Yellow Onion, Carrots, Basil, Olive Oil, Extra Virgin, Kosher Salt, Chopped Garlic), Ground Turkey Raw 95% Lean, Sausage, Italian, Pork, Raw, Spinach, Raw, Mushrooms, White, Raw, Onion, Olive Oil, Extra Virgin, Pepper, Black), Roasted Spaghetti Squash Cooked (Squash, Spaghetti, Kosher Salt, Pepper, Black, Extra Virgin Olive Oil), Cheese, Parmesan, Shredded, Basil, Fresh

Contains: Milk

Zedric's LLC, 9873 IH-10 West, San Antonio, TX 78230

Manufactured In A Facility That Also Processes: Milk, Egg, Wheat, Peanuts, Soy, Sesame, Cod, Salmon, Almond, Pecan, Mahi, Pine Nut



Turkey Ragù Over Spaghetti Squash Regular

Nutrition Facts	
1 serving per container	
Serving size	(502g)
Amount Per Serving	
Calories	430
<small>% Daily Value*</small>	
Total Fat 22g	28%
Saturated Fat 9g	45%
Trans Fat 0g	
Cholesterol 95mg	32%
Sodium 960mg	42%
Total Carbohydrate 25g	9%
Dietary Fiber 6g	21%
Total Sugars 11g	
Includes 0g Added Sugars	0%
Protein 34g	
Vitamin D 0.1mcg	0%
Calcium 370mg	30%
Iron 4.4mg	25%
Potassium 790mg	15%

Ingredients: Turkey Ragù Mix New Cooked (Marinara Sauce (Tomatoes, Crushed, Canned, Yellow Onion, Carrots, Basil, Olive Oil, Extra Virgin, Kosher Salt, Chopped Garlic), Ground Turkey Raw 95% Lean, Sausage, Italian, Pork, Raw, Spinach, Raw, Mushrooms, White, Raw, Onion, Olive Oil, Extra Virgin, Pepper, Black), Roasted Spaghetti Squash Cooked (Squash, Spaghetti, Kosher Salt, Pepper, Black, Extra Virgin Olive Oil), Cheese, Parmesan, Shredded, Basil, Fresh

Contains: Milk

Zedric's LLC, 9873 IH-10 West, San Antonio, TX 78230

Manufactured In A Facility That Also Processes: Milk, Egg, Wheat, Peanuts, Soy, Sesame, Cod, Salmon, Almond, Pecan, Mahi, Pine Nut

ZEDRICK'S ENTREES



ZedNuggets Over Mac-n-Cheese Small

Nutrition Facts	
1 serving per container	
Serving size	(191g)
Amount Per Serving	
Calories	330
	% Daily Value*
Total Fat 16g	21%
Saturated Fat 5g	25%
Trans Fat 0g	
Cholesterol 35mg	12%
Sodium 470mg	20%
Total Carbohydrate 30g	11%
Dietary Fiber 3g	11%
Total Sugars 3g	
Includes 0g Added Sugars	0%
Protein 16g	
Vitamin D 0.1mcg	0%
Calcium 120mg	10%
Iron 2mg	10%
Potassium 410mg	8%

* The % Daily Value (DV) tells you how much a nutrient in a serving of food contributes to a daily diet. 2,000 calories a day is used for general nutrition advice.

Ingredients: ZedNuggets (Chicken, Nuggets, White Meat, Precooked, Frozen, Not Reheated), Buttered Broccoli (Broccoli, Butter (Cream, Natural Flavor), Pepper, Black), Mac-N-Cheese, Bulk (Zedrick's Macaroni (Elbow Macaroni), Fancy Cheese Sauce (Milk, Nonfat, Parmesan (Milk, Cheese Cultures, Salt, Enzymes), Mild Cheddar & Monterey Jack Cheese Blend, Cornstarch))

Contains: Milk, Wheat

Zedrick's LLC, 9873 IH-10 West, San Antonio, TX 78230

Manufactured In A Facility That Also Processes: Milk, Egg, Wheat, Peanuts, Soy, Sesame, Cod, Salmon, Almond, Pecan, Mahi, Pine Nut



ZedNuggets Over Mac-n-Cheese Regular

Nutrition Facts	
1 serving per container	
Serving size	(312g)
Amount Per Serving	
Calories	560
	% Daily Value*
Total Fat 25g	32%
Saturated Fat 8g	40%
Trans Fat 0g	
Cholesterol 60mg	20%
Sodium 790mg	34%
Total Carbohydrate 55g	20%
Dietary Fiber 5g	18%
Total Sugars 4g	
Includes 0g Added Sugars	0%
Protein 27g	
Vitamin D 0.3mcg	2%
Calcium 220mg	15%
Iron 3.4mg	20%
Potassium 580mg	10%

* The % Daily Value (DV) tells you how much a nutrient in a serving of food contributes to a daily diet. 2,000 calories a day is used for general nutrition advice.

Ingredients: Mac-N-Cheese, Bulk (Zedrick's Macaroni (Elbow Macaroni), Fancy Cheese Sauce (Milk, Nonfat, Parmesan (Milk, Cheese Cultures, Salt, Enzymes), Mild Cheddar & Monterey Jack Cheese Blend, Cornstarch)), ZedNuggets (Chicken, Nuggets, White Meat, Precooked, Frozen, Not Reheated), Buttered Broccoli (Broccoli, Butter (Cream, Natural Flavor), Pepper, Black)

Contains: Milk, Wheat

Zedrick's LLC, 9873 IH-10 West, San Antonio, TX 78230

Manufactured In A Facility That Also Processes: Milk, Egg, Wheat, Peanuts, Soy, Sesame, Cod, Salmon, Almond, Pecan, Mahi, Pine Nuts



Zedric's Texas Style Chili Mac Bowl Small

Nutrition Facts	
1 serving per container	
Serving size	(283g)
Amount Per Serving	
Calories	350
	% Daily Value*
Total Fat 9g	12%
Saturated Fat 4g	20%
Trans Fat 0g	
Cholesterol 50mg	17%
Sodium 220mg	10%
Total Carbohydrate 39g	14%
Dietary Fiber 4g	14%
Total Sugars 4g	
Includes 0g Added Sugars	0%
Protein 24g	
Vitamin D 0mcg	0%
Calcium 150mg	10%
Iron 3.2mg	20%
Potassium 160mg	4%

* The % Daily Value (DV) tells you how much a nutrient in a serving of food contributes to a daily diet. 2,000 calories a day is used for general nutrition advice.

Ingredients: Zedric's Chili Mac Bulk (Texas Style Turkey Chili Bulk (Ground Turkey Raw 95% Lean, Tomatoes, Crushed, Water, Onion, Poblano Pepper, Olive Oil, Extra Virgin, Chopped Garlic, Chili Powder, Ground Cumin, Paprika, Pepper, Black), Zedrick's Macaroni (Elbow Macaroni)), Julienned Yellow Onion, Mild Cheddar & Monterey Jack Cheese Blend

Contains: Milk, Wheat

Zedrick's LLC, 9873 IH-10 West, San Antonio, TX 78230

Manufactured In A Facility That Also Processes: Milk, Egg, Wheat, Peanuts, Soy, Sesame, Cod, Salmon, Almond, Pecan, Mahi, Pine Nut



Zedric's Texas Style Chili Mac Bowl Regular

Nutrition Facts	
1 serving per container	
Serving size	(439g)
Amount Per Serving	
Calories	570
	% Daily Value*
Total Fat 17g	22%
Saturated Fat 7g	35%
Trans Fat 0g	
Cholesterol 85mg	28%
Sodium 380mg	17%
Total Carbohydrate 60g	22%
Dietary Fiber 6g	21%
Total Sugars 6g	
Includes 0g Added Sugars	0%
Protein 38g	
Vitamin D 0mcg	0%
Calcium 270mg	20%
Iron 5mg	30%
Potassium 240mg	6%

* The % Daily Value (DV) tells you how much a nutrient in a serving of food contributes to a daily diet. 2,000 calories a day is used for general nutrition advice.

Ingredients: Zedric's Chili Mac Bulk (Texas Style Turkey Chili Bulk (Ground Turkey Raw 95% Lean, Tomatoes, Crushed, Water, Onion, Poblano Pepper, Olive Oil, Extra Virgin, Chopped Garlic, Chili Powder, Ground Cumin, Paprika, Pepper, Black), Zedrick's Macaroni (Elbow Macaroni)), Mild Cheddar & Monterey Jack Cheese Blend, Julienned Yellow Onion

Contains: Milk

Zedrick's LLC, 9873 IH-10 West, San Antonio, TX 78230

Manufactured In A Facility That Also Processes: Milk, Egg, Wheat, Peanuts, Soy, Sesame, Cod, Salmon, Almond, Pecan, Mahi, Pine Nut