

ZEDRIC'S BREAKFAST



Bacon, Egg & Cheese Scramble Small

Nutrition Facts	
1 serving per container	
Serving size	(163g)
Amount Per Serving	
Calories	260
% Daily Value*	
Total Fat 18g	23%
Saturated Fat 7g	35%
Trans Fat 0g	
Cholesterol 360mg	120%
Sodium 460mg	20%
Total Carbohydrate 1g	0%
Dietary Fiber 0g	0%
Total Sugars <1g	
Includes 0g Added Sugars	0%
Protein 22g	
Vitamin D 1.8mcg	10%
Calcium 150mg	10%
Iron 1.6mg	8%
Potassium 180mg	4%
* The % Daily Value (DV) tells you how much a nutrient in a serving of food contributes to a daily diet. 2,000 calories a day is used for general nutrition advice.	

Ingredients: Bacon, Pico, Egg & Egg White Mix (Egg, Whole, Raw, Fresh, Egg Whites, Applegate Organics Uncured Reduced Sodium Sunday Bacon, Zedric's Pico De Gallo (Tomatoes, Roma, Red Onion, Lime Juice, Cilantro, Pepper, Serrano)), Mild Cheddar & Monterey Jack Cheese Blend

Contains: Milk, Egg

Zedric's LLC, 9873 IH-10 West, San Antonio, TX 78230

Manufactured In A Facility That Also Processes: Milk, Egg, Wheat, Peanuts, Soy, Sesame, Cod, Salmon, Almond, Pecan, Mahi, Pine Nut



Bacon, Egg & Cheese Scramble Regular

Nutrition Facts	
1 serving per container	
Serving size	(312g)
Amount Per Serving	
Calories	470
% Daily Value*	
Total Fat 32g	41%
Saturated Fat 12g	60%
Trans Fat 0g	
Cholesterol 705mg	235%
Sodium 840mg	37%
Total Carbohydrate 2g	1%
Dietary Fiber 0g	0%
Total Sugars 1g	
Includes 0g Added Sugars	0%
Protein 41g	
Vitamin D 3.7mcg	20%
Calcium 200mg	15%
Iron 3.2mg	20%
Potassium 350mg	8%
* The % Daily Value (DV) tells you how much a nutrient in a serving of food contributes to a daily diet. 2,000 calories a day is used for general nutrition advice.	

Ingredients: Bacon, Pico, Egg & Egg White Mix (Egg, Whole, Raw, Fresh, Egg Whites, Applegate Organics Uncured Reduced Sodium Sunday Bacon, Zedric's Pico De Gallo (Tomatoes, Roma, Red Onion, Lime Juice, Cilantro, Pepper, Serrano)), Mild Cheddar & Monterey Jack Cheese Blend

Contains: Milk, Egg

Zedric's LLC, 9873 IH-10 West, San Antonio, TX 78230

Manufactured In A Facility That Also Processes: Milk, Egg, Wheat, Peanuts, Soy, Sesame, Cod, Salmon, Almond, Pecan, Mahi, Pine Nut



Bacon, Mushroom, & Tomato Omelette Small

Nutrition Facts	
1 serving per container	
Serving size	(149g)
Amount Per Serving	
Calories	180
% Daily Value*	
Total Fat 12g	15%
Saturated Fat 4.5g	23%
Trans Fat 0g	
Cholesterol 250mg	83%
Sodium 300mg	13%
Total Carbohydrate 2g	1%
Dietary Fiber <1g	2%
Total Sugars 1g	
Includes 0g Added Sugars	0%
Sugar Alcohol 0g	
Protein 16g	
Vitamin D 1.4mcg	6%
Calcium 90mg	6%
Iron 1.3mg	8%
Potassium 260mg	6%
* The % Daily Value (DV) tells you how much a nutrient in a serving of food contributes to a daily diet. 2,000 calories a day is used for general nutrition advice.	

Ingredients: Zedric's Omelette (Zedric's Egg & Egg White Mix (Egg, Whole, Raw, Fresh, Egg Whites)), Bacon, Mushroom, And Tomato Omelette Filling (Mushrooms, White, Raw, Tomatoes, Applegate Organics Uncured Reduced Sodium Sunday Bacon), Mild Cheddar & Monterey Jack Cheese Blend

Contains: Milk, Egg

Zedric's LLC, 9873 IH-10 West, San Antonio, TX 78230

Manufactured In A Facility That Also Processes: Milk, Egg, Wheat, Peanuts, Soy, Sesame, Cod, Salmon, Almond, Pecan, Mahi, Pine Nut



Bacon, Mushroom, & Tomato Omelette regular

Nutrition Facts	
1 serving per container	
Serving size	(297g)
Amount Per Serving	
Calories	360
% Daily Value*	
Total Fat 24g	31%
Saturated Fat 9g	45%
Trans Fat 0g	
Cholesterol 500mg	167%
Sodium 610mg	27%
Total Carbohydrate 5g	2%
Dietary Fiber 1g	4%
Total Sugars 3g	
Includes 0g Added Sugars	0%
Sugar Alcohol 0g	
Protein 32g	
Vitamin D 2.7mcg	15%
Calcium 180mg	15%
Iron 2.6mg	15%
Potassium 520mg	10%
* The % Daily Value (DV) tells you how much a nutrient in a serving of food contributes to a daily diet. 2,000 calories a day is used for general nutrition advice.	

Ingredients: Zedric's Omelette (Zedric's Egg & Egg White Mix (Egg, Whole, Raw, Fresh, Egg Whites)), Bacon, Mushroom, And Tomato Omelette Filling (Mushrooms, White, Raw, Tomatoes, Applegate Organics Uncured Reduced Sodium Sunday Bacon), Mild Cheddar & Monterey Jack Cheese Blend

Contains: Milk, Egg

Zedric's LLC, 9873 IH-10 West, San Antonio, TX 78230

Manufactured In A Facility That Also Processes: Milk, Egg, Wheat, Peanuts, Soy, Sesame, Cod, Salmon, Almond, Pecan, Mahi, Pine Nut

ZEDRIC'S BREAKFAST



Blueberry Protein Pancakes A La Carte

Nutrition Facts	
1 serving per container	
Serving size	(167g)
Amount Per Serving	
Calories	250
% Daily Value*	
Total Fat 4g	5%
Saturated Fat 0g	0%
Trans Fat 0g	
Cholesterol 0mg	0%
Sodium 360mg	16%
Total Carbohydrate 58g	21%
Dietary Fiber 4g	14%
Total Sugars 22g	
Includes 17g Added Sugars	34%
Protein 11g	
Vitamin D 0mcg	0%
Calcium 170mg	15%
Iron 1.7mg	10%
Potassium 530mg	10%

* The % Daily Value (DV) tells you how much a nutrient in a serving of food contributes to a daily diet. 2,000 calories a day is used for general nutrition advice.

Ingredients: Blueberry Pancake 1 Portion (Blueberry Protein Pancakes (Oatmeal Pancake Recipe (Egg Whites, Cereals, QUAKER, Quick Oats, Dry, Yogurt, Greek, Plain, Nonfat, Stevia (Dextrose, Stevia Leaf Extract), Baking Powder (Cornstarch, Sodium Bicarbonate, Sodium Aluminium Sulfate, Monocalcium Phosphate), Baking Soda), Blueberries)), Syrup, Maple, Blueberries, Almonds

Contains: Egg, Wheat

Zedric's LLC, 9873 IH-10 West, San Antonio, TX 78230

Manufactured In A Facility That Also Processes: Milk, Egg, Wheat, Peanuts, Soy, Sesame, Cod, Salmon, Almond, Pecan, Mahi, Pine Nut



Blueberry Protein Pancakes with Egg Scramble Small

Nutrition Facts	
1 serving per container	
Serving size	(202g)
Amount Per Serving	
Calories	280
% Daily Value*	
Total Fat 9g	12%
Saturated Fat 2.5g	13%
Trans Fat 0g	
Cholesterol 240mg	80%
Sodium 310mg	13%
Total Carbohydrate 42g	15%
Dietary Fiber 3g	11%
Total Sugars 21g	
Includes 17g Added Sugars	34%
Protein 16g	
Vitamin D 1.3mcg	6%
Calcium 140mg	10%
Iron 2.1mg	10%
Potassium 440mg	10%

* The % Daily Value (DV) tells you how much a nutrient in a serving of food contributes to a daily diet. 2,000 calories a day is used for general nutrition advice.

Ingredients: Zedric's Egg & Egg White Mix (Egg, Whole, Raw, Fresh, Egg Whites), Blueberry Pancake 1 Portion (Blueberry Protein Pancakes (Oatmeal Pancake Recipe (Egg Whites, Cereals, QUAKER, Quick Oats, Dry, Yogurt, Greek, Plain, Nonfat, Stevia (Dextrose, Stevia Leaf Extract), Baking Powder (Cornstarch, Sodium Bicarbonate, Sodium Aluminium Sulfate, Monocalcium Phosphate), Baking Soda), Blueberries)), Blueberries, Syrup, Maple, Almonds

Contains: Egg, Wheat

Zedric's LLC, 9873 IH-10 West, San Antonio, TX 78230

Manufactured In A Facility That Also Processes: Milk, Egg, Wheat, Peanuts, Soy, Sesame, Cod, Salmon, Almond, Pecan, Mahi, Pine Nut



Blueberry Protein Pancakes with Egg Scramble Large

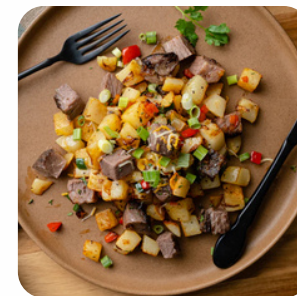
Nutrition Facts	
1 serving per container	
Serving size	(514g)
Amount Per Serving	
Calories	690
% Daily Value*	
Total Fat 25g	32%
Saturated Fat 7g	35%
Trans Fat 0g	
Cholesterol 795mg	265%
Sodium 1040mg	45%
Total Carbohydrate 84g	31%
Dietary Fiber 6g	21%
Total Sugars 27g	
Includes 21g Added Sugars	42%
Protein 52g	
Vitamin D 4.4mcg	20%
Calcium 410mg	30%
Iron 7.8mg	45%
Potassium 1580mg	35%

* The % Daily Value (DV) tells you how much a nutrient in a serving of food contributes to a daily diet. 2,000 calories a day is used for general nutrition advice.

Ingredients: Zedric's Egg & Egg White Mix (Egg, Whole, Raw, Fresh, Egg Whites), Oatmeal Pancake Recipe (Egg Whites, Cereals, QUAKER, Quick Oats, Dry, Yogurt, Greek, Plain, Nonfat, Stevia (Dextrose, Stevia Leaf Extract), Baking Powder (Cornstarch, Sodium Bicarbonate, Sodium Aluminium Sulfate, Monocalcium Phosphate), Baking Soda), Blueberries, Molasses, Almonds

Contains: Egg

Zedric's LLC, 9873 IH-10 West, San Antonio, TX 78230



Beef Brisket Hash Small

Nutrition Facts	
1 serving per container	
Serving size	(177g)
Amount Per Serving	
Calories	230
% Daily Value*	
Total Fat 8g	10%
Saturated Fat 2.5g	13%
Trans Fat 0g	
Cholesterol 40mg	13%
Sodium 420mg	18%
Total Carbohydrate 22g	8%
Dietary Fiber 4g	14%
Total Sugars 1g	
Includes 0g Added Sugars	0%
Sugar Alcohol 0g	
Protein 17g	
Vitamin D 0mcg	0%
Calcium 80mg	6%
Iron 2.3mg	15%
Potassium 720mg	15%

* The % Daily Value (DV) tells you how much a nutrient in a serving of food contributes to a daily diet. 2,000 calories a day is used for general nutrition advice.

Ingredients: Brisket Hash Potatoes (Potatoes, Onions, Yellow, Poblano Pepper, Peppers, Bell, Red, Olive Oil, Kosher Salt, Paprika, Pepper, Black), Seasoned Brisket (COOKED) (Beef, Top Sirloin, Steak, Separable Lean Only, Trimmed To 1/8" Fat, Select, Raw, Kosher Salt, Pepper, Black), Mild Cheddar & Monterey Jack Cheese Blend

Zedric's LLC, 9873 IH-10 West, San Antonio, TX 78230

Manufactured In A Facility That Also Processes: Milk, Egg, Wheat, Peanuts, Soy, Sesame, Cod, Salmon, Almond, Pecan, Mahi, Pine Nut

ZEDRIC'S BREAKFAST



**Beef Brisket Hash
Regular**

Nutrition Facts	
1 serving per container	
Serving size	(291g)
Amount Per Serving	
Calories	360
% Daily Value*	
Total Fat 12g	15%
Saturated Fat 3.5g	18%
<i>Trans</i> Fat 0g	
Cholesterol 55mg	18%
Sodium 670mg	29%
Total Carbohydrate 39g	14%
Dietary Fiber 7g	25%
Total Sugars 2g	
Includes 0g Added Sugars	0%
Sugar Alcohol 0g	
Protein 25g	
Vitamin D 0mcg	0%
Calcium 100mg	8%
Iron 3.8mg	20%
Potassium 1210mg	25%

* The % Daily Value (DV) tells you how much a nutrient in a serving of food contributes to a daily diet. 2,000 calories a day is used for general nutrition advice.

Ingredients: Brisket Hash Potatoes (Potatoes, Onions, Yellow, Poblano Pepper, Peppers, Bell, Red, Olive Oil, Kosher Salt, Paprika, Pepper, Black), Seasoned Brisket (COOKED) (Beef, Top Sirloin, Steak, Separable Lean Only, Trimmed To 1/8" Fat, Select, Raw, Kosher Salt, Pepper, Black), Mild Cheddar & Monterey Jack Cheese Blend

Zedric's LLC, 9873 IH-10 West, San Antonio, TX 78230

Manufactured In A Facility That Also Processes: Milk, Egg, Wheat, Peanuts, Soy, Sesame, Cod, Salmon, Almond, Pecan, Mahi, Pine Nut



**Country Sausage
Breakfast Bowl Small**

Nutrition Facts	
1 serving per container	
Serving size	(201g)
Amount Per Serving	
Calories	350
% Daily Value*	
Total Fat 24g	31%
Saturated Fat 8g	40%
<i>Trans</i> Fat 0g	
Cholesterol 275mg	92%
Sodium 660mg	29%
Total Carbohydrate 12g	4%
Dietary Fiber 1g	4%
Total Sugars <1g	
Includes 0g Added Sugars	0%
Sugar Alcohol 0g	
Protein 19g	
Vitamin D 1.9mcg	10%
Calcium 70mg	6%
Iron 1.7mg	10%
Potassium 390mg	8%

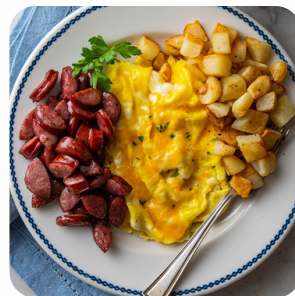
* The % Daily Value (DV) tells you how much a nutrient in a serving of food contributes to a daily diet. 2,000 calories a day is used for general nutrition advice.

Ingredients: Zedric's Egg & Egg White Mix (Egg, Whole, Raw, Fresh, Egg Whites), Hash Brown Potatoes (Potatoes, Onion, Olive Oil, Extra Virgin, Pepper, Black), Sliced Sausage (Sausage, Smoked Link Sausage, Pork And Beef), Mild Cheddar & Monterey Jack Cheese Blend

Contains: Milk, Egg

Zedric's LLC, 9873 IH-10 West, San Antonio, TX 78230

Manufactured In A Facility That Also Processes: Milk, Egg, Wheat, Peanuts, Soy, Sesame, Cod, Salmon, Almond, Pecan, Mahi, Pine Nut



**Country Sausage
Breakfast Bowl Regular**

Nutrition Facts	
1 serving per container	
Serving size	(286g)
Amount Per Serving	
Calories	440
% Daily Value*	
Total Fat 29g	37%
Saturated Fat 10g	50%
<i>Trans</i> Fat 0g	
Cholesterol 430mg	143%
Sodium 750mg	33%
Total Carbohydrate 18g	7%
Dietary Fiber 2g	7%
Total Sugars 2g	
Includes 0g Added Sugars	0%
Sugar Alcohol 0g	
Protein 26g	
Vitamin D 2.8mcg	15%
Calcium 100mg	8%
Iron 2.5mg	15%
Potassium 560mg	10%

* The % Daily Value (DV) tells you how much a nutrient in a serving of food contributes to a daily diet. 2,000 calories a day is used for general nutrition advice.

Ingredients: Zedric's Egg & Egg White Mix (Egg, Whole, Raw, Fresh, Egg Whites), Hash Brown Potatoes (Potatoes, Onion, Olive Oil, Extra Virgin, Pepper, Black), Sliced Sausage (Sausage, Smoked Link Sausage, Pork And Beef), Mild Cheddar & Monterey Jack Cheese Blend

Contains: Milk, Egg

Zedric's LLC, 9873 IH-10 West, San Antonio, TX 78230

Manufactured In A Facility That Also Processes: Milk, Egg, Wheat, Peanuts, Soy, Sesame, Cod, Salmon, Almond, Pecan, Mahi, Pine Nut



**Homemade Turkey
Chorizo over Cilantro
Lime Brown Rice Small**

Nutrition Facts	
1 serving per container	
Serving size	(206g)
Amount Per Serving	
Calories	220
% Daily Value*	
Total Fat 10g	13%
Saturated Fat 5g	25%
<i>Trans</i> Fat 0g	
Cholesterol 65mg	22%
Sodium 150mg	7%
Total Carbohydrate 10g	4%
Dietary Fiber 1g	4%
Total Sugars <1g	
Includes 0g Added Sugars	0%
Protein 21g	
Vitamin D 0.1mcg	0%
Calcium 130mg	10%
Iron 1.8mg	10%
Potassium 90mg	2%

* The % Daily Value (DV) tells you how much a nutrient in a serving of food contributes to a daily diet. 2,000 calories a day is used for general nutrition advice.

Ingredients: Turkey Chorizo Recipe (Ground Turkey Raw 95% Lean, Apple Cider Vinegar, McCormick's Ancho Chile Powder, Chopped Garlic, Crushed Red Pepper Flakes, Pepper, Black, Spices, Cumin Seed, Spices, Oregano, Dried), Cilantro Lime Brown Rice (Brown Rice Cooked (Rice, Brown, Long-Grain), Cilantro Lime Brown Rice (Cilantro Leaves, Raw, Lime Juice, Raw, Red Onion, Butter (Cream, Natural Flavor), Chopped Garlic, Pepper, Black)), Cheddar (Milk, Cultures, Salt, Enzymes, Annatto (Color)), Julienned Yellow Onion

Contains: Milk, Wheat

Zedric's LLC, 9873 IH-10 West, San Antonio, TX 78230

Manufactured In A Facility That Also Processes: Milk, Egg, Wheat, Peanuts, Soy, Sesame, Cod, Salmon, Almond, Pecan, Mahi, Pine Nut

ZEDRIC'S BREAKFAST



Homemade Turkey Chorizo over Cilantro Lime Brown Rice Regular

Nutrition Facts	
1 serving per container	
Serving size	(1361g)
Amount Per Serving	
Calories	350
% Daily Value*	
Total Fat 14g	18%
Saturated Fat 7g	35%
Trans Fat 0g	
Cholesterol 105mg	35%
Sodium 190mg	8%
Total Carbohydrate 17g	6%
Dietary Fiber 2g	7%
Total Sugars <1g	
Includes 0g Added Sugars	0%
Protein 34g	
Vitamin D 0.1mcg	0%
Calcium 160mg	10%
Iron 3mg	15%
Potassium 160mg	4%

* The % Daily Value (DV) tells you how much a nutrient in a serving of food contributes to a daily diet. 2,000 calories a day is used for general nutrition advice.

Ingredients: Turkey Chorizo Recipe (Ground Turkey Raw 95% Lean, Apple Cider Vinegar, McCormick's Ancho Chile Powder, Chopped Garlic, Crushed Red Pepper Flakes, Pepper, Black, Spices, Cumin Seed, Spices, Oregano, Dried), Cilantro Lime Brown Rice (Brown Rice Cooked (Rice, Brown, Long-Grain), Cilantro Lime Brown Rice (Cilantro Leaves, Raw, Lime Juice, Raw, Red Onion, Butter (Cream, Natural Flavor), Chopped Garlic, Pepper, Black)), Cheddar (Milk, Cultures, Salt, Enzymes, Annatto (Color)), Julienned Yellow Onion

Contains: Milk, Wheat

Zedric's LLC, 9873 IH-10 West, San Antonio, TX 78230

Manufactured In A Facility That Also Processes: Milk, Egg, Wheat, Peanuts, Soy, Sesame, Cod, Salmon, Almond, Pecan, Mahi, Pine Nut



Overnight Oats

Nutrition Facts	
1 serving per container	
Serving size	(255g)
Amount Per Serving	
Calories	410
% Daily Value*	
Total Fat 10g	13%
Saturated Fat 1g	5%
Trans Fat 0g	
Cholesterol 0mg	0%
Sodium 130mg	6%
Total Carbohydrate 74g	27%
Dietary Fiber 10g	36%
Total Sugars 29g	
Includes 24g Added Sugars	48%
Protein 10g	
Vitamin D 1.4mcg	6%
Calcium 360mg	25%
Iron 3.9mg	20%
Potassium 390mg	8%

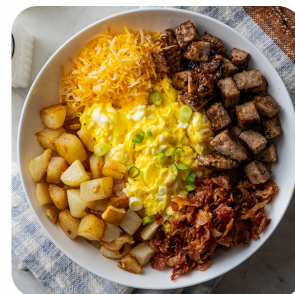
* The % Daily Value (DV) tells you how much a nutrient in a serving of food contributes to a daily diet. 2,000 calories a day is used for general nutrition advice.

Ingredients: Overnight Oats Bulk Recipe (Beverages, Almond Milk, Sweetened, Vanilla Flavor, Ready-To-Drink, Cereals, QUAKER, Quick Oats, Dry, Syrup, Maple, Chia Seeds, Vanilla Extract), Blueberries, Cinnamon Granola (Cereals, QUAKER, Quick Oats, Dry, Syrup, Maple, Olive Oil, Spices, Cinnamon, Ground, Vanilla Extract, Kosher Salt)

Contains: Milk, Wheat, Almond

Zedric's LLC, 9873 IH-10 West, San Antonio, TX 78230

Manufactured In A Facility That Also Processes: Milk, Egg, Wheat, Peanuts, Soy, Sesame, Cod, Salmon, Almond, Pecan, Mahi, Pine Nut



Southern Style Breakfast Bowl Small

Nutrition Facts	
1 serving per container	
Serving size	(171g)
Amount Per Serving	
Calories	280
% Daily Value*	
Total Fat 18g	23%
Saturated Fat 7g	35%
Trans Fat 0g	
Cholesterol 240mg	80%
Sodium 440mg	19%
Total Carbohydrate 11g	4%
Dietary Fiber 1g	4%
Total Sugars 1g	
Includes 0g Added Sugars	0%
Sugar Alcohol 0g	
Protein 18g	
Vitamin D 1.2mcg	6%
Calcium 140mg	10%
Iron 1.3mg	8%
Potassium 280mg	6%

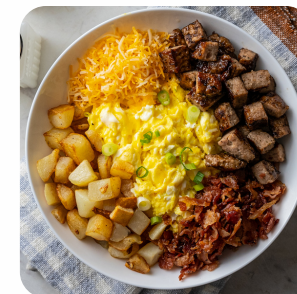
* The % Daily Value (DV) tells you how much a nutrient in a serving of food contributes to a daily diet. 2,000 calories a day is used for general nutrition advice.

Ingredients: Bacon, Egg & Egg White Mix (Egg, Whole, Raw, Fresh, Egg Whites, Applegate Organics Uncured Reduced Sodium Sunday Bacon), Hash Brown Potatoes (Potatoes, Onion, Olive Oil, Extra Virgin, Pepper, Black), Breakfast Sausage (PORK, WATER, CONTAINS 2% OR LESS OF: SALT, SUGAR, BLACK PEPPER, SAGE, RED PEPPER, SPICE EXTRACTIVES.), Mild Cheddar & Monterey Jack Cheese Blend, Onions, Green

Contains: Milk, Egg

Zedric's LLC, 9873 IH-10 West, San Antonio, TX 78230

Manufactured In A Facility That Also Processes: Milk, Egg, Wheat, Peanuts, Soy, Sesame, Cod, Salmon, Almond, Pecan, Mahi, Pine Nut



Southern Style Breakfast Bowl Regular

Nutrition Facts	
1 serving per container	
Serving size	(291g)
Amount Per Serving	
Calories	460
% Daily Value*	
Total Fat 29g	37%
Saturated Fat 11g	55%
Trans Fat 0g	
Cholesterol 465mg	155%
Sodium 730mg	32%
Total Carbohydrate 17g	6%
Dietary Fiber 2g	7%
Total Sugars 2g	
Includes 0g Added Sugars	0%
Sugar Alcohol 0g	
Protein 32g	
Vitamin D 2.3mcg	10%
Calcium 180mg	15%
Iron 2.4mg	15%
Potassium 470mg	10%

* The % Daily Value (DV) tells you how much a nutrient in a serving of food contributes to a daily diet. 2,000 calories a day is used for general nutrition advice.

Ingredients: Bacon, Egg & Egg White Mix (Egg, Whole, Raw, Fresh, Egg Whites, Applegate Organics Uncured Reduced Sodium Sunday Bacon), Hash Brown Potatoes (Potatoes, Onion, Olive Oil, Extra Virgin, Pepper, Black), Breakfast Sausage (PORK, WATER, CONTAINS 2% OR LESS OF: SALT, SUGAR, BLACK PEPPER, SAGE, RED PEPPER, SPICE EXTRACTIVES.), Mild Cheddar & Monterey Jack Cheese Blend, Onions, Green

Contains: Milk, Egg

Zedric's LLC, 9873 IH-10 West, San Antonio, TX 78230

Manufactured In A Facility That Also Processes: Milk, Egg, Wheat, Peanuts, Soy, Sesame, Cod, Salmon, Almond, Pecan, Mahi, Pine Nut

ZEDRIC'S BREAKFAST



Steak and Eggs Small

Nutrition Facts	
1 serving per container	
Serving size	(220g)
Amount Per Serving	
Calories	310
	% Daily Value*
Total Fat 15g	19%
Saturated Fat 6g	30%
<i>Trans</i> Fat 0g	
Cholesterol 320mg	107%
Sodium 280mg	12%
Total Carbohydrate 1g	0%
Dietary Fiber 0g	0%
Total Sugars 0g	
Includes 0g Added Sugars	0%
Protein 39g	
Vitamin D 1.4mcg	8%
Calcium 160mg	15%
Iron 3mg	15%
Potassium 540mg	10%

* The % Daily Value (DV) tells you how much a nutrient in a serving of food contributes to a daily diet. 2,000 calories a day is used for general nutrition advice.

Ingredients: Sautéed Diced Sirloin Beef (Beef, Top Sirloin, Steak, Separable Lean Only, Trimmed To 1/8" Fat, Select, Raw, Pepper, Black), Zedric's Egg & Egg White Mix (Egg, Whole, Raw, Fresh, Egg Whites), Cheddar (Milk, Cultures, Salt, Enzymes, Annatto (Color)), Zedric's Pico De Gallo (Tomatoes, Roma, Red Onion, Lime Juice, Cilantro, Pepper, Serrano)

Contains: Milk, Egg

Zedric's LLC, 9873 IH-10 West, San Antonio, TX 78230

Manufactured In A Facility That Also Processes: Milk, Egg, Wheat, Peanuts, Soy, Sesame, Cod, Salmon, Almond, Pecan, Mahi, Pine Nut



Steak and Eggs Regular

Nutrition Facts	
1 serving per container	
Serving size	(305g)
Amount Per Serving	
Calories	410
	% Daily Value*
Total Fat 20g	26%
Saturated Fat 8g	40%
<i>Trans</i> Fat 0g	
Cholesterol 525mg	175%
Sodium 390mg	17%
Total Carbohydrate 2g	1%
Dietary Fiber 0g	0%
Total Sugars <1g	
Includes 0g Added Sugars	0%
Protein 51g	
Vitamin D 2.5mcg	15%
Calcium 200mg	15%
Iron 4.2mg	25%
Potassium 700mg	15%

* The % Daily Value (DV) tells you how much a nutrient in a serving of food contributes to a daily diet. 2,000 calories a day is used for general nutrition advice.

Ingredients: Zedric's Egg & Egg White Mix (Egg, Whole, Raw, Fresh, Egg Whites), Sautéed Diced Sirloin Beef (Beef, Top Sirloin, Steak, Separable Lean Only, Trimmed To 1/8" Fat, Select, Raw, Pepper, Black), Cheddar (Milk, Cultures, Salt, Enzymes, Annatto (Color)), Zedric's Pico De Gallo (Tomatoes, Roma, Red Onion, Lime Juice, Cilantro, Pepper, Serrano)

Contains: Milk, Egg

Zedric's LLC, 9873 IH-10 West, San Antonio, TX 78230

Manufactured In A Facility That Also Processes: Milk, Egg, Wheat, Peanuts, Soy, Sesame, Cod, Salmon, Almond, Pecan, Mahi, Pine Nut



Tex-Mex Ground Turkey Sweet Potato Picadillo Small

Nutrition Facts	
1 serving per container	
Serving size	(312g)
Amount Per Serving	
Calories	300
	% Daily Value*
Total Fat 8g	10%
Saturated Fat 3.5g	18%
<i>Trans</i> Fat 0g	
Cholesterol 100mg	33%
Sodium 420mg	18%
Total Carbohydrate 17g	6%
Dietary Fiber 3g	11%
Total Sugars 5g	
Includes 0g Added Sugars	0%
Protein 36g	
Vitamin D 0mcg	0%
Calcium 60mg	4%
Iron 2.9mg	15%
Potassium 260mg	6%

* The % Daily Value (DV) tells you how much a nutrient in a serving of food contributes to a daily diet. 2,000 calories a day is used for general nutrition advice.

Ingredients: Turkey Picadillo (Ground Turkey Raw 95% Lean, Sweet Potato, Raw, Zedric's Pico De Gallo (Tomatoes, Roma, Red Onion, Lime Juice, Cilantro, Pepper, Serrano), Poblano Pepper, Kosher Salt, Pepper, Black, Ground Cumin)

Zedric's LLC, 9873 IH-10 West, San Antonio, TX 78230

Manufactured In A Facility That Also Processes: Milk, Egg, Wheat, Peanuts, Soy, Sesame, Cod, Salmon, Almond, Pecan, Mahi, Pine Nut



Tex-Mex Ground Turkey Sweet Potato Picadillo Regular

Nutrition Facts	
1 serving per container	
Serving size	(510g)
Amount Per Serving	
Calories	490
	% Daily Value*
Total Fat 13g	17%
Saturated Fat 5g	25%
<i>Trans</i> Fat 0g	
Cholesterol 165mg	55%
Sodium 690mg	30%
Total Carbohydrate 29g	11%
Dietary Fiber 4g	14%
Total Sugars 8g	
Includes 0g Added Sugars	0%
Protein 58g	
Vitamin D 0mcg	0%
Calcium 100mg	8%
Iron 4.7mg	25%
Potassium 430mg	10%

* The % Daily Value (DV) tells you how much a nutrient in a serving of food contributes to a daily diet. 2,000 calories a day is used for general nutrition advice.

Ingredients: Turkey Picadillo (Ground Turkey Raw 95% Lean, Sweet Potato, Raw, Zedric's Pico De Gallo (Tomatoes, Roma, Red Onion, Lime Juice, Cilantro, Pepper, Serrano), Poblano Pepper, Kosher Salt, Pepper, Black, Ground Cumin)

Zedric's LLC, 9873 IH-10 West, San Antonio, TX 78230

Manufactured In A Facility That Also Processes: Milk, Egg, Wheat, Peanuts, Soy, Sesame, Cod, Salmon, Almond, Pecan, Mahi, Pine Nut

ZEDRIC'S BREAKFAST



Turkey Chorizo & Egg Scramble Small

Nutrition Facts	
1 serving per container	
Serving size	(241g)
Amount Per Serving	
Calories	330
% Daily Value*	
Total Fat 22g	28%
Saturated Fat 7g	35%
Trans Fat 0g	
Cholesterol 420mg	140%
Sodium 320mg	14%
Total Carbohydrate 5g	2%
Dietary Fiber <1g	3%
Total Sugars 2g	
Includes 0g Added Sugars	0%
Protein 25g	
Vitamin D 2.3mcg	10%
Calcium 170mg	15%
Iron 2.4mg	15%
Potassium 270mg	6%

* The % Daily Value (DV) tells you how much a nutrient in a serving of food contributes to a daily diet. 2,000 calories a day is used for general nutrition advice.

Ingredients: Zedric's Egg & Egg White Mix (Egg, Whole, Raw, Fresh, Egg Whites), Turkey Chorizo Vegetables (Turkey Chorizo Recipe (Ground Turkey Raw 95% Lean, Apple Cider Vinegar, McCormick's Ancho Chile Powder, Chopped Garlic, Crushed Red Pepper Flakes, Pepper, Black, Spices, Cumin Seed, Spices, Oregano, Dried), Peppers, Bell, Red, Onions, Yellow, Olive Oil, Cilantro Leaves, Raw), Zedric's Pico De Gallo (Tomatoes, Roma, Red Onion, Lime Juice, Cilantro, Pepper, Serrano), Cheddar (Milk, Cultures, Salt, Enzymes, Annatto (Color))

Contains: Milk, Egg

Zedric's LLC, 9873 IH-10 West, San Antonio, TX 78230

Manufactured In A Facility That Also Processes: Milk, Egg, Wheat, Peanuts, Soy, Sesame, Cod, Salmon, Almond, Pecan, Mahi, Pine Nut



Turkey Chorizo & Egg Scramble Regular

Nutrition Facts	
1 serving per container	
Serving size	(383g)
Amount Per Serving	
Calories	530
% Daily Value*	
Total Fat 36g	46%
Saturated Fat 11g	55%
Trans Fat 0g	
Cholesterol 675mg	225%
Sodium 460mg	20%
Total Carbohydrate 7g	3%
Dietary Fiber 1g	4%
Total Sugars 3g	
Includes 0g Added Sugars	0%
Protein 40g	
Vitamin D 3.6mcg	20%
Calcium 220mg	15%
Iron 4mg	20%
Potassium 440mg	10%

* The % Daily Value (DV) tells you how much a nutrient in a serving of food contributes to a daily diet. 2,000 calories a day is used for general nutrition advice.

Ingredients: Zedric's Egg & Egg White Mix (Egg, Whole, Raw, Fresh, Egg Whites), Turkey Chorizo Vegetables (Turkey Chorizo Recipe (Ground Turkey Raw 95% Lean, Apple Cider Vinegar, McCormick's Ancho Chile Powder, Chopped Garlic, Crushed Red Pepper Flakes, Pepper, Black, Spices, Cumin Seed, Spices, Oregano, Dried), Peppers, Bell, Red, Onions, Yellow, Olive Oil, Cilantro Leaves, Raw), Zedric's Pico De Gallo (Tomatoes, Roma, Red Onion, Lime Juice, Cilantro, Pepper, Serrano), Cheddar (Milk, Cultures, Salt, Enzymes, Annatto (Color))

Contains: Milk, Egg

Zedric's LLC, 9873 IH-10 West, San Antonio, TX 78230

Manufactured In A Facility That Also Processes: Milk, Egg, Wheat, Peanuts, Soy, Sesame, Cod, Salmon, Almond, Pecan, Mahi, Pine Nut