

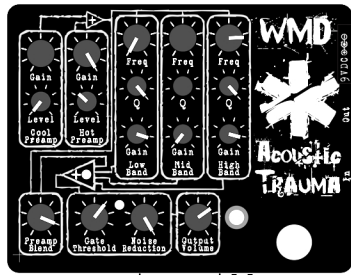


Denver, CO  
<http://wmdevices.com>  
 303-549-9205  
[sales@wmdevices.com](mailto:sales@wmdevices.com)

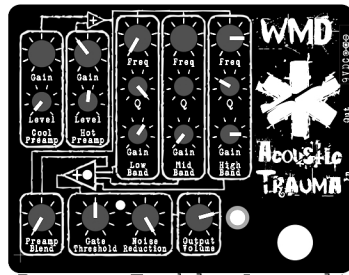
Thank you for purchasing the WMD Acoustic Trauma. We know you will find tonal nirvana just short of hearing damage.

In case you were wondering, the Acoustic Trauma is all analog, uses the highest quality components and took well over a year in development and tweaking. It is capable of the most massive guitar sounds while retaining intimate clarity.

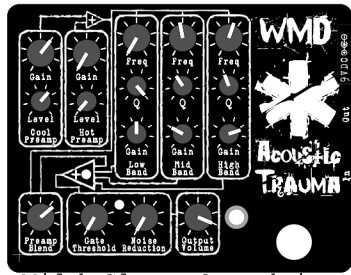
## Example Settings



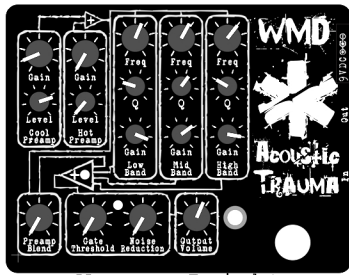
Hearing Killer



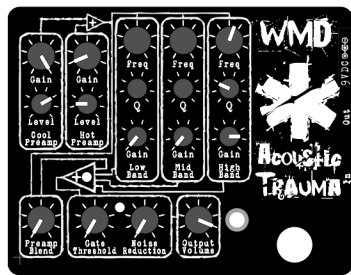
Bass & Treble Assault



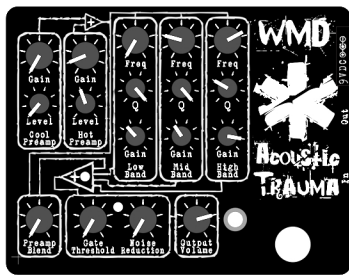
Mild Clear Overdrive



Warm & Bright



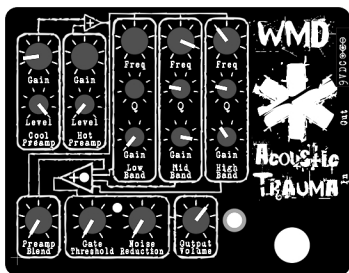
Telephone



Punchy Overdrive



Dark & F\*ing Loud



Wish You Were Here



## Power Supply

The Acoustic Trauma now uses a standard 9VDC BOSS style adaptor (Center Negative). Current consumption is no more than 200mA. Internally, the 9VDC is boosted to 18V of headroom.

## The Preamps

**Cool Preamp** - This preamp has low to medium gain and very soft clipping. It cleans up nicely.

**Hot Preamp** - This preamp will probably not clean up, providing tons of sustain and crunch.

**Preamp Blend** - Both preamps can be blended together using the level knobs. Please note that analog filters alter audio phase relationships, so using this may produce frequency canceling and other unpredictable results.

## The EQ

The three band EQ gives control over the center frequency, Q and Gain of the filter. Use each band to shape your tone as desired.

**Freq** - Each band has a continuous frequency adjustment, just spin the knob. The overall range is about 40Hz to 15kHz with some overlap between bands.

**Q** - This controls the sharpness and narrowness of the center frequency. High settings cause the filter to resonate and become increasingly abrasive.

**Gain** - Controls amount of signal going to the EQ band, adjust to taste.

## Summing Stage/Clip LED

The LED inside the triangle is the clip indicator for the master summing bus. It will light if the signal is starting to clip.

## Noise Gate

The Gate Threshold is keyed from the guitar input so any changes to the preamps or EQ do not affect the opening of the Gate. Set this to open and close in a natural way.

**Noise Reduction** - Controls the level of noise attenuation when the gate is not open. Turn up for less noise.

**LED** - The LED indicates how open the gate is.

**Release** - Inside the pedal is a blue trim pot marked "R", use it to adjust the speed of the gate release if necessary. **DO NOT TOUCH THE OTHER TRIM POT.**

## Output Volume

Set the level of output to your amplifier. Levels can exceed 10 Vpp, so beware of overdriving your equipment.

## Stomp Switch

The WMD Acoustic Trauma is true bypass, so when the effect is off, you don't have to worry about it sucking your tone.

## Warranty

The Acoustic Trauma is warranted against any manufacturer defect for 1 full year from date of purchase. Please contact WMD if your device is not functioning properly.