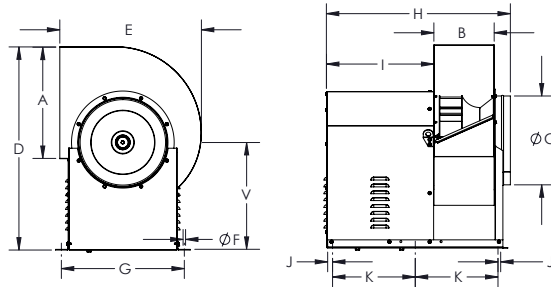




MODEL CM BELT DRIVE UTILITY VENT SET

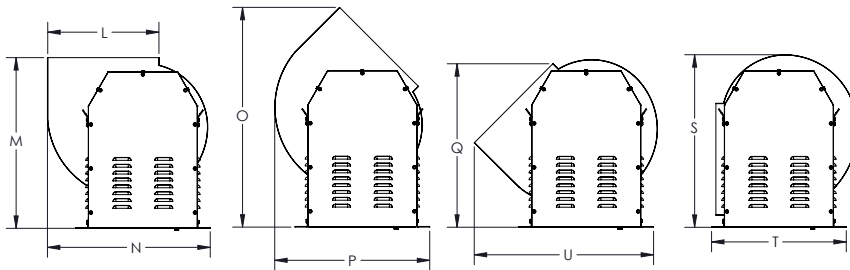
SWSI Arrangement #10, Class I Construction, Nonoverloading B.I. Wheel



Except CM 10

NOTES:

1. Outlet flange is optional for all sizes.
2. Unit rotatable to all positions: 45°, 90°, 270°, 315°, and 360°. "CW" rotation is shown: "CCW" rotation is similar but opposite.



Model	A	B	C	D	E	F	G	H	I	J	K
10	12-3/4	7-1/8	9-7/8	23-7/8	17-1/4	1/2	16-3/4	25-3/8	15-1/2	2-3/16	9-13/16
12	16	8-3/4	12-3/8	29-3/16	21-3/8	1/2	19-13/16	28-3/4	17	1-5/8	11-13/16
14	17-13/16	9-3/4	14	32-3/4	22-3/4	1/2	19-13/16	30-3/4	17-7/8	2-1/2	11-13/16
16	20	10-3/4	15-3/4	36-3/4	25-1/4	1/2	21-5/16	31-5/8	18	2-1/4	12-5/8
18	22-1/2	12-1/8	17-3/4	40-7/8	28-1/2	1/2	24-1/16	37	21-5/8	1-7/8	15-3/4
20	25-1/4	13-5/8	19-3/4	44-7/8	31-1/4	1/2	26-15/16	38-3/8	21-5/8	2-11/16	15-3/4
22	28-1/4	15-1/4	22	49-3/8	35	1/2	29-5/16	40-1/8	21-5/8	1-11/16	17-11/16
24	31-5/8	17	24-3/4	57-11/16	39-1/8	1/2	32-1/4	41-7/8	21-5/8	2-3/8	17-11/16
27	35-1/2	18-7/8	28	59	44	1/2	35-3/16	50	27-1/4	1-15/16	21-13/16
30	39-3/4	21	31-1/2	64	49-1/4	1/2	39-1/2	53-3/4	28-3/4	1-15/16	23-5/8
36	44-1/2	23-3/8	35-1/2	71-13/16	55-1/4	1/2	44-11/16	54-15/16	27-5/16	1-15/16	24-3/16

Model	L	M	N	O	P	Q	S	T	U	V	AVG SHIP WT
10	12-3/4	21-5/8	20	25-7/8	19-3/8	21-5/8	20-3/8	18-7/8	22-7/8	13-1/4	123
12	16	26	24-1/4	32-1/2	23-1/8	24-3/4	24-7/8	21-7/8	27-1/2	15-3/4	154
14	18	28	25-7/8	35-5/8	24-5/8	27	28-1/4	23-1/4	29-3/8	17-11/16	172
16	20	31-1/8	29-1/4	39-7/8	27-5/8	29-7/8	31-3/8	26	32-1/4	19-11/16	202
18	22-1/2	34-3/8	32-3/4	44-1/8	38-1/4	33-3/4	34-3/4	29-1/4	36-7/8	21-5/8	251
20	25-1/4	37-1/2	36-1/8	48-3/8	34-1/4	37-1/8	38-1/8	32-3/8	40-1/2	23-5/8	287
22	28-1/4	41	40-1/8	53-1/4	37-3/4	40-3/4	42	35-3/4	45-3/8	25-9/16	389
24	31-5/8	45-7/8	44-5/8	59-3/4	42-1/8	45-1/2	47	39-7/8	50-3/4	30-1/4	465
27	35-1/2	55-5/8	50-5/8	71-1/2	46-1/8	54-7/8	57-1/4	44	57-1/2	28-3/4	680
30	39-3/4	62-3/8	57-1/8	80-1/8	51-1/4	62-1/2	63-1/4	49-1/4	61-1/4	30	931
36	44-3/4	70-1/2	64-3/8	89-3/4	57-1/2	70-5/8	70-5/8	55-1/4	72-3/8	33-1/2	1228