

XS Series Disconnect Switch

The Ruffneck™ XS Disconnect Switch is engineered for use in the most demanding applications such as drilling rigs, utilidors and compression stations where high vibration, dirt, moisture, fluctuating power and high impact conditions exist. The XS Disconnect Switch is suitable for all Ruffneck™ heaters (FX, XL, AH, FR, HP) as well as main switches for equipment and machines.

It is designed for use in hazardous locations where specific explosive gases or dusts are present.

Features and Benefits

- Anodized aluminum, copper free aluminum exterior
- Corrosion-resistant, suitable for H₂S environments
- Precision extruded aluminum components
- Suitable for high vibration installations
- Suitable for dirty environments
- Impact resistant with no moving parts
- 600 Vac maximum
- Comes pre-wired for easy installation
- Compatible with all Ruffneck™ heaters (FX, XL, AH, FR, HP)
- Suitable for single phase and three phase systems

Specifications

Temperature Range: -40°F to 104°F (-40°C to 40°C)

Net Weight: 12 lbs (5.5 kg)

Switching: Disconnect

Conduit Opening: 2 x 1" NPT ports

Electrical Rating

Table 79 – Part Number and Electrical Rating

| Part No. | Volts | Phase | Hertz | Amps |
|----------|-------|-------|-------|------|
| XS40 | 600 | 3 | 50/60 | 40 |
| XS60 | 600 | 3 | 50/60 | 60 |

- Class I, Division 1 & 2, Groups A, B, C & D
- Class II, Division 1 & 2, Groups E, F & G
- Class III, Division 1 & 2

Approvals

-  CSA_{US} Certified

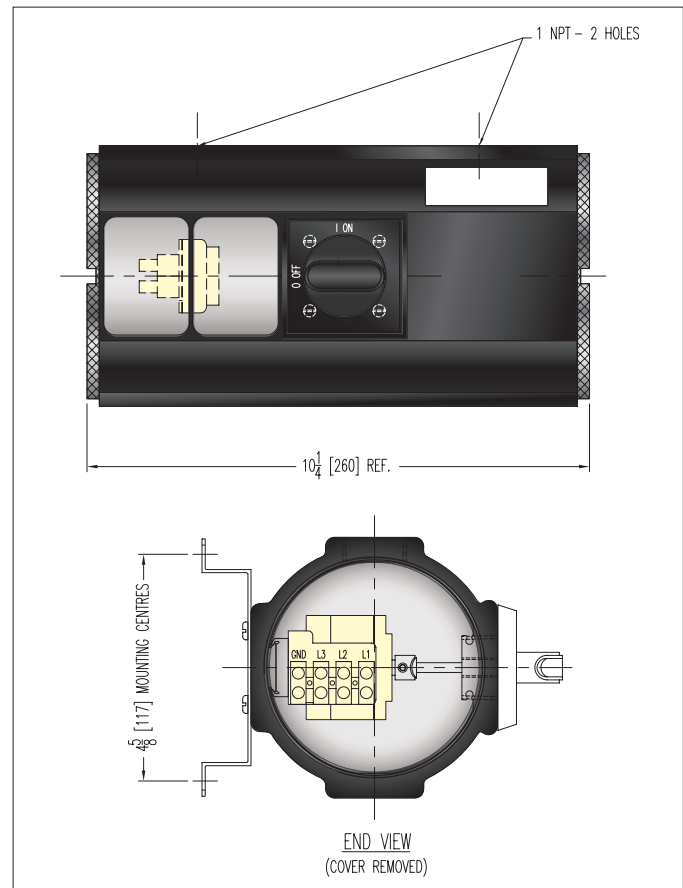


Figure 51 – Dimensions