

# UB20xx

8"/20 cm

## Blower/Exhauster

Explosion-proof blower/exhauster manufactured to meet the requirements of the ATEX Directive, IEC standards and INMETRO standards. Safely blow or exhaust hazardous gases with minimal risk of the fan causing a spark.

Safety is compromised if any component along the electrical path in the blower/exhauster poses a risk of igniting a spark. Therefore, the UB20xx is built using only certified explosion-proof components along the electrical path. Furthermore, once assembled the whole unit is certified for safe use in explosive atmospheres in accordance with the limitations of the rating. It is the user's responsibility to determine the suitability of equipment for the intended purpose.

In addition to providing peace of mind to the user, whole-unit certified fan prevents suppliers from being linked to the chain of liability. That is why it is crucial for users and suppliers to demand whole-unit certification.

### Specifications

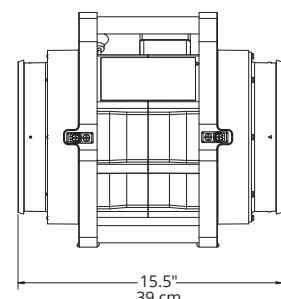
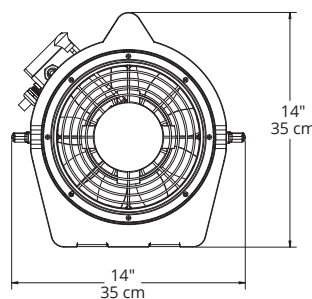
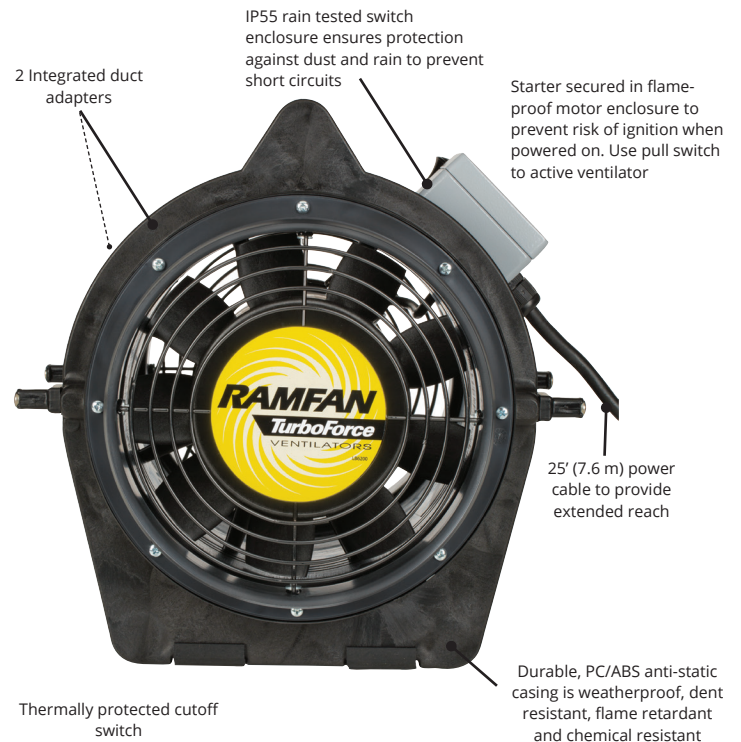
Model	UB20xx (115V)	UB20xx (230V)
Part #	EF7002 (115V)	EF8002 (230V)
IMPA Code	591416	591417
Motor	0.33 Hp	0.25 kW
Motor Type	Totally Encapsulated Air Over Flame Proof	
Electric	115V, 50/60Hz, 1Ø	230V, 50/60Hz, 1Ø
Amps (Start/Run)	7A / 2A	7A / 1.2A
Cable Lengths	25'/16 AWG	7.6 m/1.5 mm2
Plug Types	A.T.X. 100/130V	A.T.X. 240V
Operating Temperature	-22°F to +104°F	-30°C to +40°C
Noise	74 dB @ 3' (1m)	
Run Time	Continuous	
Weight	27 lbs	12 kg
Dimensions (h x w x d)	14 x 14 x 15.5 in	35 x 35 x 39 cm
Impeller	9-Blade	
Duct Adapters	2	

### WHOLE-UNIT CERTIFICATION



### Certifications & Approvals

Ex II 2 G Ex db eb IIB T6 Gb  
IECEx UL Certificate #: 13.0062X  
INMETRO Certificate #: UL-BR 13.0593X



### Performance

Airflow	UB20xx (60Hz)	UB20xx (50Hz)
Free Air	980 cfm (1,666 m³/hr)	819 cfm (1,392 m³/hr)
Through Duct		
15/4.6 m w/ one 90° turn:	789 cfm (1,341 m³/hr)	659 cfm (1,120 m³/hr)
15/4.6 m w/ two 90° turns:	666 cfm (1,132 m³/hr)	558 cfm (948 m³/hr)
25/7.6 m w/ one 90° turn:	722 cfm (1,227 m³/hr)	603 cfm (1,025 m³/hr)
25/7.6 m w/ two 90° turns:	614 cfm (1,044 m³/hr)	510 cfm (867 m³/hr)

### Kits

#### UB20xx w/ Quick-Couple™ Canister

Order# EF7015 - 60Hz UB20xx w/Canister & 15' (4.6 m) duct  
Order# EF7025 - 60Hz UB20xx w/Canister & 25' (7.6 m) duct  
Order# EF8015 - 50Hz UB20xx w/Canister & 15' (4.6 m) duct  
Order# EF8025 - 50Hz UB20xx w/Canister & 25' (7.6 m) duct



#### UB20xx M.E.D.™ (Manhole Entry Device)

Order# EF7015-MEDXX (UB20XX 60 Hz)  
Order# EF8015-MEDXX (UB20XX 50 Hz)

Anti-static system ventilates without blocking the entry to maintain airflow while working and permits rapid entry and exit.

Package includes: UB20xx fan, Quick-couple™ canister with conductive duct, M.E.D.™, 90° elbow, and universal mount.



### Available Accessories

#### ECKO Flex™ Anti-Static Duct with carrying bag

Order# FDT-0815CBB  
8" (20cm) anti-static duct 15' (4.6 m), w/ carrying bag  
Order# FDT-0825CBB  
8" (20cm) anti-static duct 25' (7.6 m), w/ carrying bag



#### Quick-Couple™ Canister

Order# EF7004CS  
Quick-Couple™ Canister w/ 8" (20cm) conductive duct 15' (4.6 m)

Order# EF7004CL  
Quick-Couple™ Canister w/ 8" (20cm) conductive duct 25' (7.6 m)

