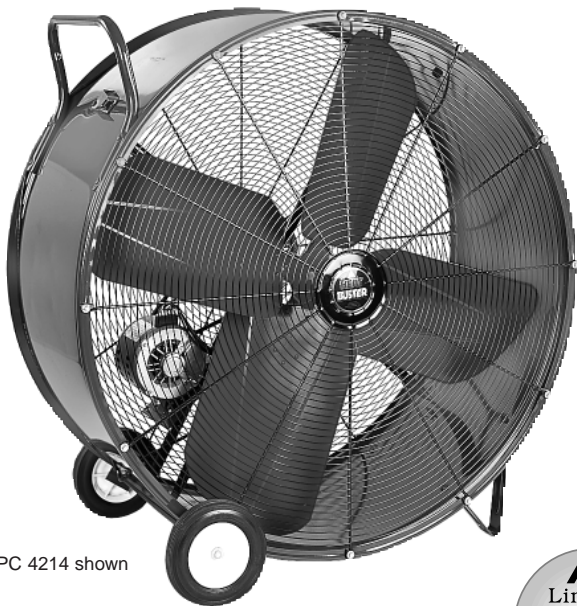


**TPC SERIES**

**OWNER'S  
MANUAL**

Read and  
save for  
future reference

# THE *Heat* **BUSTER™**



TPC 4214 shown

- Installation
- Operation
- Repair parts

FOR MODEL NO.

TPC 3613 T

TPC 4213 T

TPC 4214

TPC 4215

TPC 48156



## OWNER'S RECORD

Please complete for future reference.

Model # \_\_\_\_\_ Serial # \_\_\_\_\_

Purchased from \_\_\_\_\_

Date Purchased \_\_\_\_\_



**TRIANGLE ENGINEERING  
OF ARKANSAS, INC.**

E-mail: [mail@trianglefans.com](mailto:mail@trianglefans.com) • Website: [www.trianglefans.com](http://www.trianglefans.com)

1101 North Redmond Road • Jacksonville, Arkansas 72076  
(501) 982-7558 • Fax (501) 982-5691 • **1-800-255-9014**

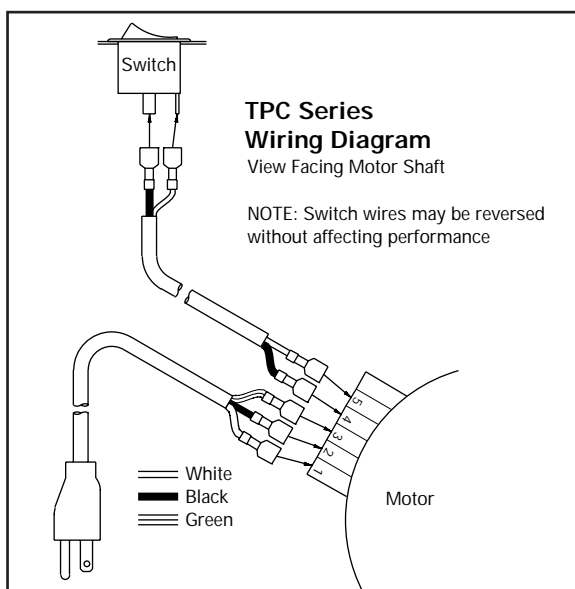
# IMPORTANT: READ INSTRUCTIONS CAREFULLY BEFORE ATTEMPTING TO INSTALL, OPERATE OR SERVICE THIS FAN. FAILURE TO COMPLY WITH INSTRUCTIONS COULD RESULT IN PERSONAL INJURY AND/OR PROPERTY DAMAGE. RETAIN INSTRUCTIONS FOR FUTURE REFERENCE.

The HEAT BUSTER is a high volume portable fan designed for heavy-duty use in factories, warehouses, laundries, garages, etc. It is easily rolled to various locations on sturdy 8-inch diameter wheels. The unit is constructed of cold-rolled steel with a powder coat finish. Guards are made of steel wire and comply with OSHA guarding requirements. The ON/OFF switch is conveniently mounted and guarded on side of barrel.

## GENERAL SAFETY INFORMATION

1. Your HEAT BUSTER fan will operate only on 115 Volt AC, 60Hz (cycle) current with a minimum of a 15 Amp circuit.
2. **WARNING:** To reduce the risk of electric shock, **DO NOT** expose to water or rain. To guard against electric shock while the fan is connected to power source, **DO NOT PERMIT** fan to come in contact with other grounded objects such as pipes, radiators, ranges, etc.
3. **DO NOT ABUSE POWER CORD.** **DO NOT** pull on cord to remove from electrical receptacle. Keep cord away from heat, oil and sharp edges. Inspect cord periodically and replace if damaged.

4. Disconnect the fan when not in use, before servicing and cleaning and when repairing or replacing parts.
5. **DO NOT** carry or move the fan when connected to power source. Be sure switch is in "OFF" position prior to connecting to power source.
6. When the HEAT BUSTER is used out-of-doors with extension cord, use only cord of proper size (Amp rating), UL listed and with receptacle to accept three prong grounded plug furnished on the fans power cord. Only round jacketed extension cords should be used.
7. Before operating this fan, check for worn or damaged parts and replace or repair as required. To avoid risk of fire, electrical shock or other injury, disconnect from power source before servicing.
8. **DO NOT** operate the HEAT BUSTER near flammable liquids or in gaseous or explosive atmospheres as sparks from motor may ignite fumes.
9. If the wire guards are removed, replace before normal operation.
10. In case of power failure, turn off the fan at switch. This will prevent motor burn out and/or unexpected restarting.



## ASSEMBLY

There is no assembly required.

## INSTALLATION

Simply locate fan in desired position, connect power cord, and fan is ready for operation.

## OPERATION

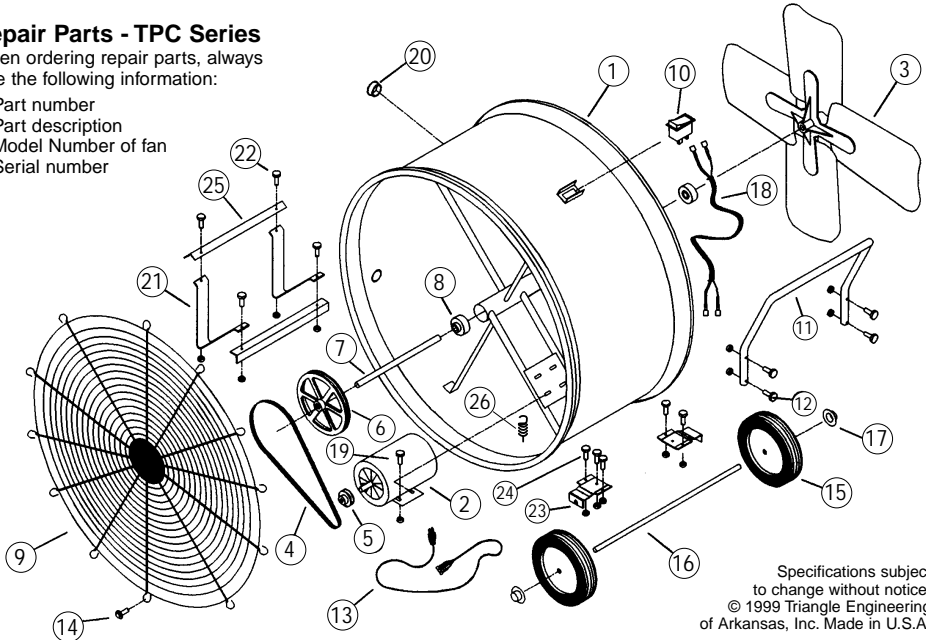
Your Heat Buster fan is turned **ON** or **OFF** with a rocker switch located toward the top of the barrel. To operate the fan push the rocker switch down on one side to turn the fan **ON** and down on the opposite side to turn the fan **OFF**.

TROUBLE-SHOOTING	POSSIBLE CAUSE(S)	CORRECTIVE ACTION
Fan does not operate	1. Faulty switch 2. Defective motor 3. No power	1. Replace switch 2. Replace motor 3. Check to see if power cord is plugged in. Check fuse or circuit breaker.
Insufficient air flow	1. Loose pulleys or fan blade 2. Intake guard or exhaust guard excessively dirty 3. V-Belt slipping	1. Tighten pulley set screw 2. Clean guards 3. Replace V-belt
Squealing, slapping or whining noises while operating	1. Defective motor bearings 2. Defective fan bearings	1. Replace motor 2. Replace bearings and seals

## Repair Parts - TPC Series

When ordering repair parts, always give the following information:

1. Part number
2. Part description
3. Model Number of fan
4. Serial number



Specifications subject to change without notice.  
© 1999 Triangle Engineering of Arkansas, Inc. Made in U.S.A.

KEY NO.	PART NUMBER	DESCRIPTION
1.	WP36 WP42 A238-48	Barrel Assembly, 36" Barrel Assembly, 42" Barrel Assembly, 48"
2.	PP1/2H1-T PP3/4H1 PP 1H1-T	Motor 1/2 HP, One Speed - TEAO Motor 3/4 HP, Two Speed - ODP Motor 1 HP, One Speed - TEAO
3.	WP36A WP42A A-237-48	Blade Assembly, 36" Blade Assembly, 42" Blade Assembly, 48"
4.	PP3B	V-Belt, 36" & 42"
5.	PPMP PUL-300G	Motor Pulley, 36" & 42" Motor Pulley, 48"
6.	PP9D	Fan Pulley, 36" & 42"
7.	WP4E	Fan Blade Shaft
8.	PP5F	Bearing & Seal (2 Req'd)
9.	PP36G PP42G PP486	Fan Guard, 36" (2 Req'd) Fan Guard, 42" (2 Req'd) Fan Guard, 48" (2 Req'd)
10.	PP6H	Switch, Single Speed

KEY NO.	PART NUMBER	DESCRIPTION
11.	PP82	Handle HB/2 Type
12.	PP10J	Handle Bolts & Nuts (4)
13.	PP10L	Power Cord
14.	PP11M	Fan Guard Screws (22)
15.	PP12N W10-625	Wheels (2 Req'd) Wheels (2 Req'd), 48"
16.	WP13P	Axle
17.	PP15R	Wheel Cap (2 Req'd)
18.	PP17-2	Cord, Electrical, Single Speed
19.	PP18T	Bolts, Nuts, Washers for motor (4)
20.	PP19U	Strain Relief Bushing
21.	PP20V PRT-269	Legs (2 Req'd) Legs (2 Req'd), 48"
22.	PP21W	Bolts & Nuts for Legs (4)
23.	WP22Z	Axle Bracket (2 req'd)
24.	PP23Y	Bolts & Nuts for Axle Bracket (5)
25.	PP25B	Leg Bracket (2 req'd)
26.	PP26B	Spring, Motor Tension
N/S	A208	X-Wing, 48" (not shown)

## MAINTENANCE

**WARNING:  
DISCONNECT POWER BEFORE SERVICING  
MINOR AND ROUTINE**

1. Motor bearings are pre-lubricated ball bearings. Re-lubrication is not required.
2. Keep guards and blade clean by vacuuming or wiping periodically. Also keep motor from accumulating excessive dust that may cause overheating.

### DISASSEMBLY PROCEDURE

1. Disconnect cord from power supply.
2. Remove guard screws.
3. Remove Guard.

NOTE: Upon completion of maintenance, reinstall components in reverse order as indicated above.

# LIMITED THREE YEAR WARRANTY

## Do not return product to original place of purchase

Triangle Engineering of Arkansas, Inc. (Manufacturer) warrants, from the date of purchase, to the original purchaser only, that the product manufactured by Manufacturer is free from defects in material and workmanship for a period of **THREE (3) YEARS**. Motors, capacitors, v-belts and switches are excluded from this warranty, but shall have a limited one year warranty from date of purchase to the original purchaser.

If a failure of the product occurs, contact the Manufacturer at:

**1-800-255-9014**

and give the model number of the product, the purchase date, and a description of the problem to the customer service agent.

Once the problem is diagnosed, and proof of purchase date is verified, Manufacturer will have the option of shipping the necessary repair part(s) to the Customer, freight prepaid or having the product returned to Manufacturer for repair or replacement. If the product is returned to the Manufacturer, Customer is responsible for prepayment of all inbound freight charges. Upon repair or replacement, which shall be at the discretion of Manufacturer, the Manufacturer will prepay all outbound freight charges for the return of the product to the customer. However, if Manufacturer finds product to be in operating condition and no problems are diagnosed, product will be returned to customer freight collect.

**THERE ARE NO WARRANTIES WHICH EXTEND BEYOND THE DESCRIPTION ON THE FACE HEREOF.**

Except as provided by this express warranty, the goods are sold "as is" without any implied warranties.

This limited warranty does not cover labor to replace warranted parts or motors, nor does it cover failure of the installer to provide adequate ventilation to meet minimum exhaust requirements, damage resulting from accident, misuse or abuse, lack of proper maintenance, improper installation, affixing of any parts or attachments not authorized by Manufacturer, or loss of parts.

In no event shall Manufacturer be liable for any special, incidental, or consequential damages; which may result from any defect in material or workmanship.

It is expressly understood that Buyer's sole and exclusive remedy shall be repair or replacement of defective parts, and that Triangle Engineering shall not be liable for injury to persons or property. Should the goods prove so defective, however, as to preclude the remedying of warranted defects by repair or replacement, the Buyer's sole and exclusive remedy shall then be a refund of the purchase price.

This warranty gives you specific legal rights, and you may also have other rights which vary from state to state.