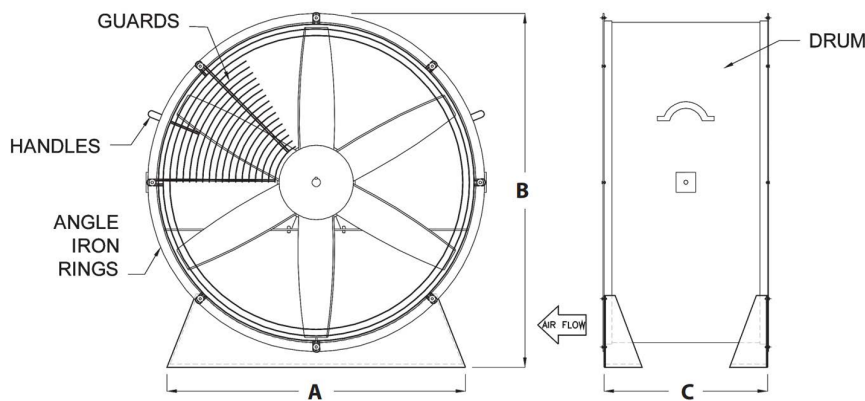


Provides portable cooling for personnel or processes. Heavy duty construction provides many years of service in demanding industrial locations such as steel mills, foundries, factories and warehouses.

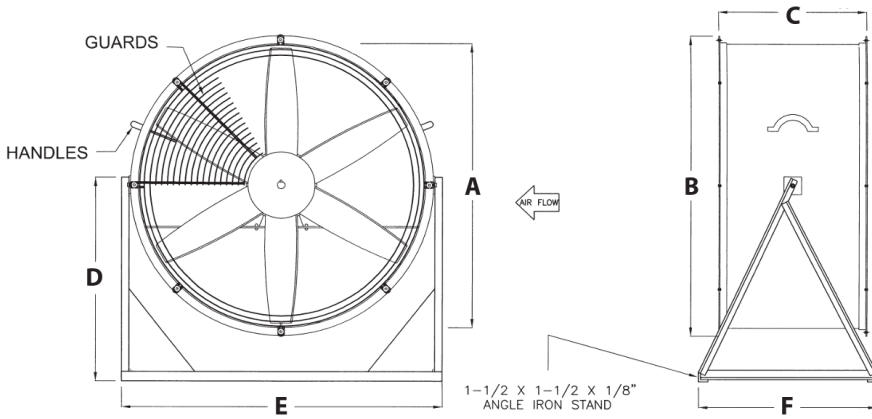
FEATURES

- Front and rear OSHA style concentric wire guards on all sizes (60" has 1/2" wire mesh)
- Rugged spark resistant, cast aluminum propellers
- TEFC motors are standard, explosion proof motors available
- Available in low, medium or high stands
- Medium and high stands rotate 180° on their center mount axis
- One-way swivel yoke swivels 180° on horizontal axis, two-way swivels on 180° horizontal axis and 360° on vertical axis
- All models have cord wired to motor and extended through fan housing, except explosion proof fans



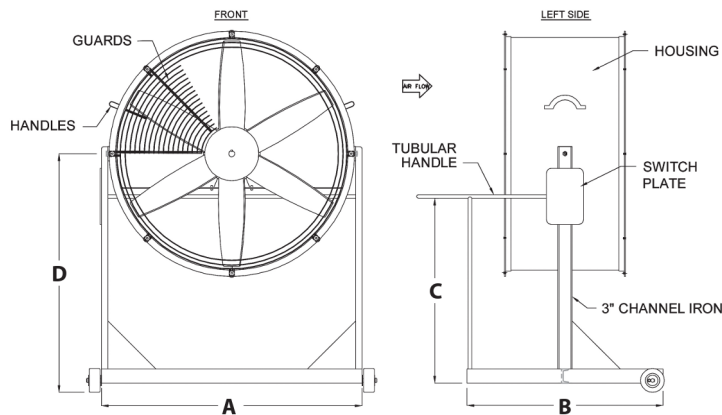
LOW STAND DIMENSIONS

Model	A	B	C	HP
NM18L	18"	21-1/2"	20"	1/4 to 1
NM24L	24"	27-1/2"	20"	1/4 to 3
NM30L	30"	33-1/2"	20"	1/3 to 3
NM36L	36"	39-1/2"	24"	1 to 5
NM42L	42"	45-1/2"	24"	2 to 5
NM48L	48"	52"	28"	5 to 10
NM60L	60"	64"	36"	7-1/2 to 15



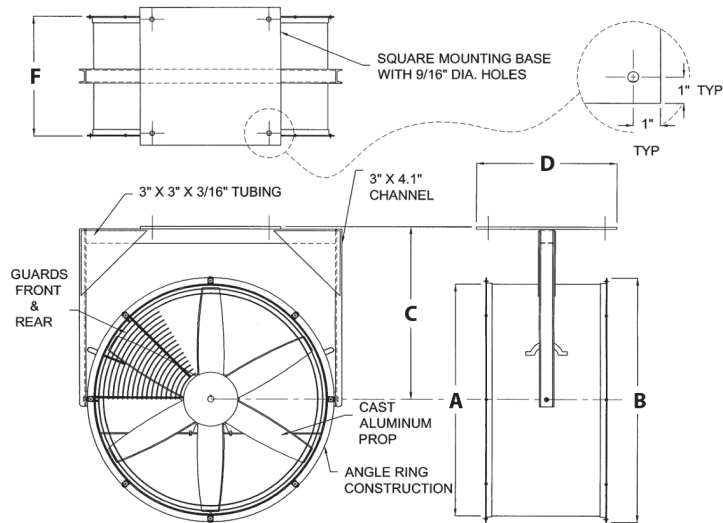
MEDIUM STAND DIMENSIONS

Model	A	B	C	D	E	F	HP
NM18M	18"	20"	20"	28"	23-1/2"	32"	1/4 to 1
NM24M	24"	26"	20"	28"	29-1/2"	32"	1/4 to 3
NM30M	30"	32"	20"	28"	35-1/2"	32"	1/3 to 3
NM36M	36"	38"	24"	28"	41-1/2"	32"	1 to 5
NM42M	42"	44"	24"	28"	47-1/2"	32"	2 to 5
NM48M	48"	51"	28"	36"	53-1/2"	32"	5 to 10
NM60M	60"	63"	36"	56"	67"	56"	7-1/2 to 15



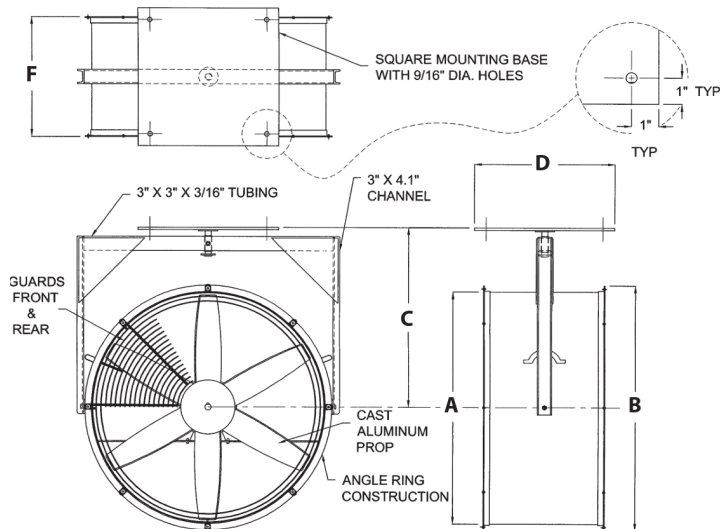
HIGH STAND DIMENSIONS

Model	A	B	C	D	HP
NM18H	23"	30"	25"	42"	1/4 to 1
NM24H	29"	30"	25"	42"	1/4 to 3
NM30H	35"	30"	25"	42"	1/3 to 3
NM36H	41"	30"	25"	42"	1 to 5
NM42H	47"	30"	25-1/2"	42"	2 to 5
NM48H	53"	30"	25-1/2"	42"	5 to 10
NM60H	65"	50"	25-1/2"	56"	7-1/2 to 15



ONE-WAY SWIVEL DIMENSIONS

Model	A	B	C	D	F	HP
NM18Y	18"	20"	20"	15"	20"	1/4 to 1
NM24Y	24"	26"	21-1/2"	15"	20"	1/4 to 3
NM30Y	30"	32"	25-1/2"	15"	20"	1/3 to 3
NM36Y	36"	38"	29-1/2"	18"	24"	1 to 5



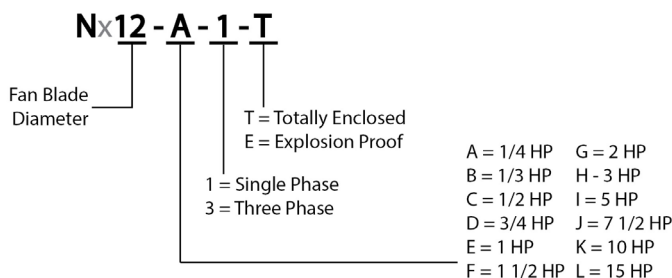
TWO-WAY SWIVEL DIMENSIONS

Model	A	B	C	D	F	HP
NM18Z	18"	20"	20"	15"	20"	1/4 to 1
NM24Z	24"	26"	21-1/2"	15"	20"	1/4 to 3
NM30Z	30"	32"	25-1/2"	15"	20"	1/3 to 3
NM36Z	36"	38"	29-1/2"	18"	24"	1 to 5

PERFORMANCE DATA

Blade Diameter	Low Stand Model	Medium Stand Model	High Stand Model	1-Way Swivel Model	2-Way Swivel Model	Horse Power	RPM	CFM	dBA
18"	NM18L-A	NM18M-A	NM18H-A	NM18Y-A	NM18Z-A	1/4	1725	3050	74
	NM18L-B	NM18M-B	NM18H-B	NM18Y-B	NM18Z-B	1/3	1725	3450	76
	NM18L-E	NM18M-E	NM18H-E	NM18Y-E	NM18Z-E	1	1725	4600	77
24"	NM24L-A	NM24M-A	NM24H-A	NM24Y-A	NM24Z-A	1/4	1725	5200	80
	NM24L-B	NM24M-B	NM24H-B	NM24Y-B	NM24Z-B	1/3	1140	5300	74
	NM24L-C	NM24M-C	NM24H-C	NM24Y-C	NM24Z-C	1/2	1725	6000	80
	NM24LL-C	NM24LM-C	NM24LH-C	NM24LY-C	NM24LZ-C	1/2	1140	6000	75
	NM24L-D	NM24M-D	NM24H-D	NM24Y-D	NM24Z-D	3/4	1140	6900	74
	NM24L-E	NM24M-E	NM24H-E	NM24Y-E	NM24Z-E	1	1725	7400	82
	NM24L-F	NM24M-F	NM24H-F	NM24Y-F	NM24Z-F	1-1/2	1725	8200	84
	NM24L-H	NM24M-H	NM24H-H	NM24Y-H	NM24Z-H	3	1725	10500	87
30"	NM30L-B	NM30M-B	NM30H-B	NM30Y-B	NM30Z-B	1/3	1140	6900	80
	NM30L-C	NM30M-C	NM30H-C	NM30Y-C	NM30Z-C	1/2	1725	8900	86
	NM30L-D	NM30M-D	NM30H-D	NM30Y-D	NM30Z-D	3/4	1140	10400	80
	NM30L-E	NM30M-E	NM30H-E	NM30Y-E	NM30Z-E	1	1140	11200	80
	NM30L-F	NM30M-F	NM30H-F	NM30Y-F	NM30Z-F	1-1/2	1725	12000	92
	NM30L-G	NM30M-G	NM30H-G	NM30Y-G	NM30Z-G	2	1140	14000	84
	NM30L-H	NM30M-H	NM30H-H	NM30Y-H	NM30Z-H	3	1725	16000	94
36"	NM36L-E	NM36M-E	NM36H-E	NM36Y-E	NM36Z-E	1	1140	13000	82
	NM36L-F	NM36M-F	NM36H-F	NM36Y-F	NM36Z-F	1-1/2	1725	14850	88
	NM36L-G	NM36M-G	NM36H-G	NM36Y-G	NM36Z-G	2	1140	17500	82
	NM36L-H	NM36M-H	NM36H-H	NM36Y-H	NM36Z-H	3	1725	18500	90
	NM36LL-H	NM36LM-H	NM36LH-H	NM36LY-H	NM36LZ-H	3	1140	20500	84
	NM36L-I	NM36M-I	NM36H-I	NM36Y-I	NM36Z-I	5	1725	23000	94
42"	NM42L-G	NM42M-G	NM42H-G	-	-	2	1140	19500	86
	NM42L-I	NM42M-I	NM42H-I	-	-	5	1725	27000	98
	NM42LL-I	NM42LM-I	NM42LH-I	-	-	5	1140	27000	86
48"	NM48LL-I	NM48LM-I	NM48LH-I	-	-	5	1140	32000	92
	NM48LLL-I	NM48LLM-I	NM48LLH-I	-	-	5	870	33000	86
	NM48LL-J	NM48LM-J	NM48LH-J	-	-	7-1/2	1140	37000	105
	NM48LL-K	NM48LM-K	NM48LH-K	-	-	10	1140	41000	105
	NM48LLL-K	NM48LLM-K	NM48LLH-K	-	-	10	870	39000	87
60"	NM60LLL-J	NM60LLM-J	NM60LLH-J	-	-	7-1/2	870	47000	91
	NM60LLL-K	NM60LLM-K	NM60LLH-K	-	-	10	870	57200	92
	NM60LLL-L	NM60LLM-L	NM60LLH-L	-	-	15	870	60750	93

MODEL NUMBER SCHEMATIC



OPTIONAL ACCESSORIES

- Caster sets: two fixed and two swivel locking casters (medium and low stand only)
- Manual starting switches with built-in overload protection (TEFC motors only)
- Coatings for outdoor and harsh areas
- Belt drive configuration
- Fabricated steel propellers