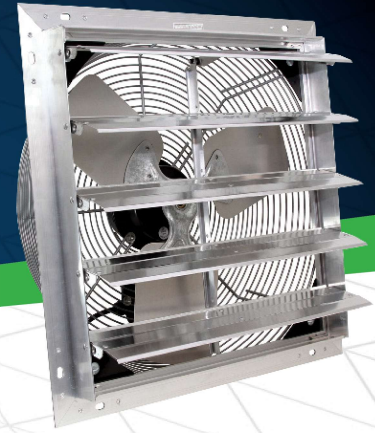


VES EXHAUST FANS

SINGLE PHASE EXHAUST SHUTTER FANS



HEAVY DUTY ALUMINUM SHUTTER HIGH PERFORMANCE MOTOR

Designed for use in a variety of industries and applications, the VES Single Phase Exhaust Shutter Fan is a durable solution that helps to improve air quality by removing and controlling unwanted condensation, noxious gases, as well as excessive heat

Our Single Phase Exhaust Shutter Fan is perfect for harsh environments, feature a OSHA compliant powder-coated intake guard. They are safe, strong, and corrosion resistant ventilation solution.

BENEFITS:

- Intake safety grill is OSHA compliant. These fans must be mounted 7' above the ground level on the exhaust side
- Silicon steel rotators have been balanced to reduce noise vibration and extend the life of the fan
- These fans are connected to a 9' electrical cord meaning electricians are not needed to install

FEATURES

- Corrosion-resistant aluminum shutter
- Intake safety grill meets OSHA standards
- Minimal-maintenance direct drive system
- Comes fully assembled for easy installation
- Fully enclosed, maintenance-free, CSA/CSA-US approved motor
- Bearings designed to handle temperatures from -40°F to 284°F
- Shutter tie bar to reduce shutter flapping and opening on windy days
- Motor enclosures have been machined to <.05mm to reduce rotor shaft play

OPTIONS

- Special order exhaust safety grill to allow for mounting below 7'
- Poly fan hood

WARRANTY

- 2 year warranty on motor
- 1 year limited warranty on all other parts

Part #	Size	Speed	HP	Voltage	Ph	Amps Hi/Lo	HZ	CFM @ .0 SP Hi/Lo	CFM @ .1 SP Hi/Lo	Noise DB	Rough Opening
101308	12"	VAR	1/10	115	1	1.35	60	1080/360	900/300	55/50	12.5" X 12.5"
101310	16"	VAR						1890/660	1575/550		16.5" X 16.5"
101313	20"	VAR	1/3			4.20		4500/1575	3750/1315	57/52	20.5" X 20.5"
101316	24"	VAR	1/2			4.94		5625/1970	4690/1640	58/53	24.5" X 24.5"

*Bold data is certified based on testing performed by an independent accredited lab using AMCA 210 standards. See each chart for standard specifications where needed. All non-bolded data is estimated in accordance with AMCA 210 standards. VES continues to strive for the most accurate test data available. As additional independent accredited lab results become available we may need to revise information stated. **Questions? Call 715-720-0800.**



Listings and Certifications



SS_SPExhaustShutter_R5