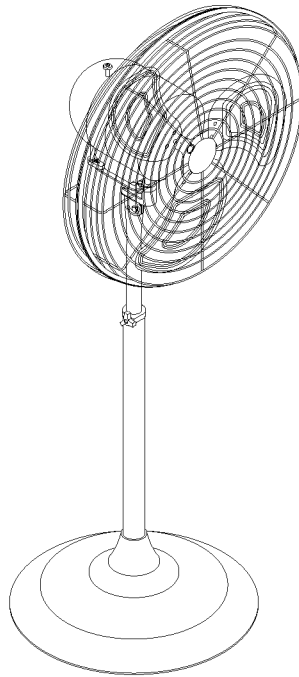




HVF24POSC & HVF30POSC Oscillating Pedestal Fan

Instruction Manual
READ AND SAVE THESE INSTRUCTIONS



WARRANTY

CANARM Ltd. warrants every new High Velocity Oscillating Pedestal Fan to be free of defects in material and workmanship, to the extent that, within a period of one year from the date of purchase CANARM Ltd. shall either repair or replace at CANARM's option, any unit or part thereof, returned freight prepaid, and found to be defective.

This warranty does not include any labor or transportation costs incidental to the removal and reinstallation of the unit at the user's premises.

Components repaired or replaced are warranted through the remainder of the original warranty period only.

This warranty applies to the original purchaser-user only; it is null and void in case of alteration, accident, abuse, neglect, and operation not in accordance with instructions.

NOTICE: No warranty claims will be honored by CANARM Ltd. unless prior authorization is obtained.

**Installation or Product problems? Do not return to store of purchase.
Contact Canarm Service at 1-800-265-1833 (CANADA) 1-800-267-4427 (U.S.A.)
1-800-567-2513 (EN FRANCAIS) Monday to Friday 8:00 - 5:00pm e.s.t.**



SAFETY & ASSEMBLY INSTRUCTIONS – HVF24POSC & HVF30POSC OSCILLATING PEDESTAL FAN

These instructions are for your safety. Read all these instructions before attempting to operate this product and save these instructions. Do not use fan if any part is missing or damaged.

Warning: To reduce the risk of fire or electrical shock, DO NOT use this fan with any solid state speed control device. This appliance has a 3-prong grounded plug that must be inserted into a matching outlet. To reduce the risk of electrical shock, this grounding plug must not be cut off the plug. Where a two-prong wall outlet is encountered, it must be replaced: contact a qualified electrician. DO NOT attempt to defeat this safety feature. Use your fan only with adequate wiring that is up to Code. Connect to properly grounded outlets only.

Rules for Safe Operation

- Always unplug unit for cleaning.
- Always unplug unit when not in use.
- Always unplug when moving unit from one location to another.
- Do not place foreign objects through guard into the blade.
- Do not operate without fan guards properly locked.
- Do not use with extension cord.
- Do not use fan in windows. Rain and moisture may create an electrical hazard.
- Do not place fan or any parts near an open flame, cooking or other heating appliance.
- Do not operate this unit with a damaged cord or plug, especially when this unit has been malfunctioned, dropped or damaged.
- Make sure fan is on a stable flat surface when in operation.
- Close supervision is necessary when this unit is used by or near children.

Unpack Your Fan and Check the Contents

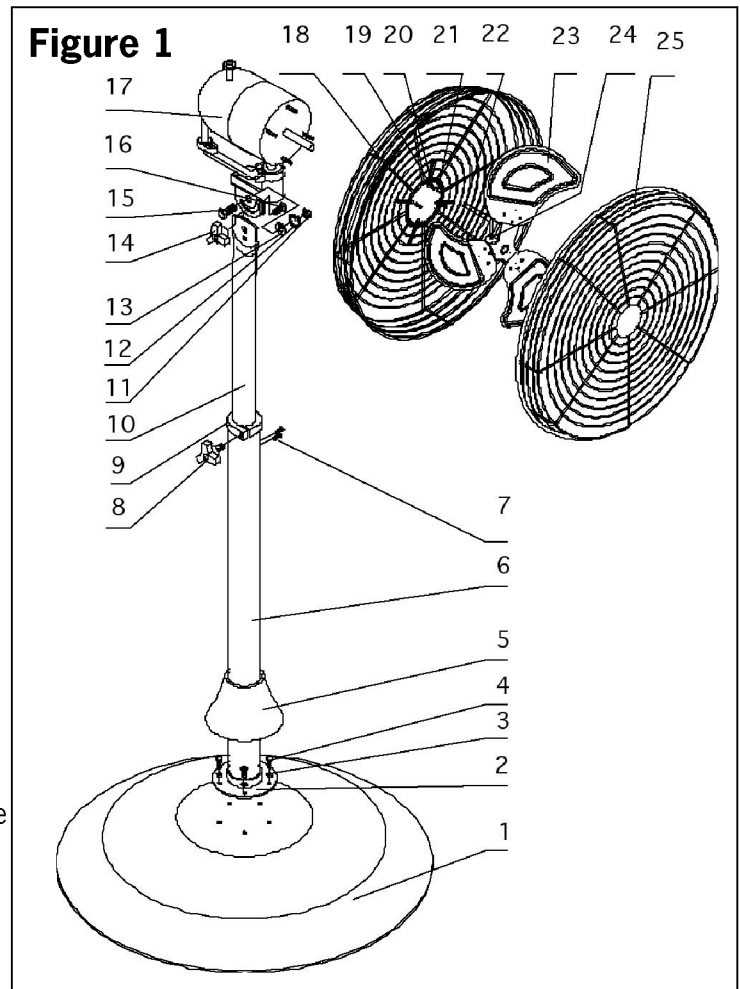
- Fan Body
- Base Frame Assembly
- Stand & Extension Pipe Assembly
- Spring

Stand & Base Assembly Instruction

1. Remove the 5 screws (4) and washers (3) from the base frame (1). Put the stand assembly (6) on the base frame, and align the holes in the coupler (2) with the holes in the base frame (1). See **Figure 1**.
2. Insert the screws (4) and washers (3) removed in Step 1 and tighten securely.
3. Slide the coupler cover (5) down over the coupler (2).

Stand Assembly Instruction

1. Make sure the spring is in stand assembly (6).
2. Remove 2 screws (7) from the adjuster (9), and loosen the knob (8) on adjuster (9).
3. Insert the extension pipe (10) into the stand pipe (6).
4. Align the 2 holes on the stand pipe (6) with the holes in the adjuster (9), secure the adjuster (9) with the 2 screws (7) removed in Step 2.
5. Adjust to the desired height.
6. Tighten the knob (8) to set the height.



Stand/Motor Assembly

1. Remove the bolts, washers, nuts (15) and pivot knob (14) from the motor flange.
2. Align the holes on the extension pipe with the holes in the motor flange (16) on the motor assembly.
3. Insert the bolts and replace the washers and nuts removed in Step 1.
4. Adjust the tilt to the desired position and tighten the pivot knob (14) to set the angle.
5. Tighten the position bolt and nut.

Rear Grille & Blade Assembly

1. Remove the 4 nuts, spring washer and flat washers (20, 21) from the bolts around the motor shaft.
2. Position the fixed clip down and carefully slide the rear grille (18) over the bolts.
3. Secure with the flat washers, spring washers and nuts removed in Step 1.
4. Carefully slide the blade assembly over the shaft and align the inner hex head screw with the slot on the shaft of the motor.
5. Tighten the blade assembly (23) with the hex head screw (24) using the other hex head driver (22) provided with the fan.

NOTE: Keep the hex driver for future use.

CAUTION: DO NOT alter the angle of the blades.

Front Grille Assembly

1. Remove the location screw and nut from the front grille (25) and open the clips.
2. Hang front grille on top rib of rear grille by utilizing the “U” shaped fixed clip at top of front grille rim.
3. Press down the clip around the front grille to secure.

Operation Instructions

TO ADJUST AIRFLOW UPWARD OR DOWNWARD: Loosen the knobs on the side of the fan body, tilt the head of the fan to the desired angle, and tighten the knobs.

SPEED CONTROL: Change the setting on the speed control to the desired setting – low, medium or high. It is normal for the motor to feel warm to the touch during operation. The motor is thermally protected and will automatically shut off when it overheats for any reason. If this happens immediately disconnect the fan from the power outlet.

OSCILLATING CONTROL: To make the fan oscillate, push down on the oscillating knob located on the top the fan housing. To stop the fan from oscillating, pull up on the oscillating knob.

The motor bearings are permanently lubricated at the factory and do not require any additional lubrication.

Cleaning

WARNING: Unplug from electrical supply source before cleaning. After servicing, any safety device (including grilles and blades) must be reinstalled or remounted as previously installed.

Use a soft damp cloth then wipe with dry cloth. Do not use harmful cleaners. Do not bend the blades.

Use a screwdriver and start from the top of the front guard. From the back of the guard, pry up all the clips and the front guard will be detached. Reverse the assembly order to dismantle the blade and the grille.

Wash guards and blade with water and soft brush. Avoid harsh chemical cleaners.

DO NOT IMMERSE MOTOR IN WATER.

Allow fan to dry completely before use.



CANARM LTD.
2157 PARKEDALE AVENUE
BROCKVILLE, ONTARIO K6V 5V6
TELEPHONE: (613) 342-5424
FAX: 1-800-263-4598
E-MAIL: agsales@canarm.ca

CANARM LTEE.
8500 RUE GRENACHE
ANJOU, QUEBEC H1J 2B1
TELEPHONE: (514) 353-2255
FAX: (514) 353-2522
E-MAIL: agsales@canarm.ca