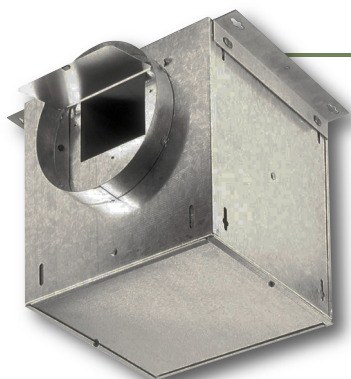
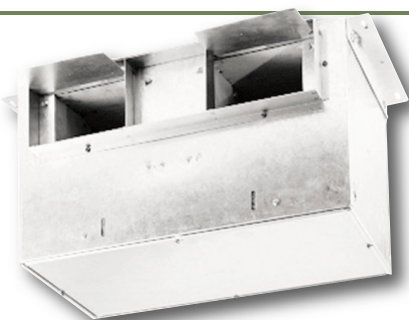


L-L SERIES

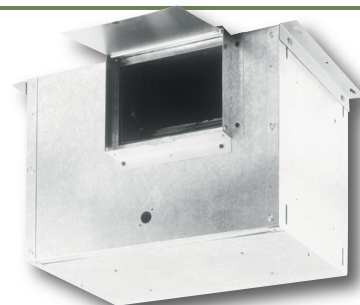
In-line Ceiling Exhausters



**L100L/L150L/L200L/L250L/L300L
IN-LINE VENTILATORS**



**L400L/L500L/L700L
IN-LINE VENTILATORS**



**L900L/L1500L
IN-LINE VENTILATORS**

FEATURES

- Low RPM for quiet operation
- Resilient anti-vibration blower mounts
- Dynamically balanced polymeric centrifugal blower wheel(s) for quiet efficient performance
- Permanently lubricated thermally protected 120v motor with plug disconnect, designed for continuous operation
- Round or rectangular duct connections
- Quiet automatic backdraft damper(s)
- Standard straight through inline discharge (field convertible to right angle discharge)

PERFORMANCE SPECIFICATIONS

MODEL	CFM @ .125" SP	SONES	AMPS	WATTS	DUCT
In-Line Ventilator (No Grille)					
L100L	106	0.7	1.1	87	6"
L150L	147	1.1	1.3	100	6"
L200L	195	1.9	1.8	127	6"
L250L	245	2.3	2.1	166	6"
L300L	293	3.1	2.6	212	6"
L400L	406	1.6	1.4	146	4 1/2" x 18 1/2"
L500L	519	3.4	2.2	232	4 1/2" x 18 1/2"
L700L	681	3.7	2.9	313	4 1/2" x 18 1/2"
L900L	894	3.8	3	306	8" x 12"
L1500L	1214	6.7	5	468	8" x 12"

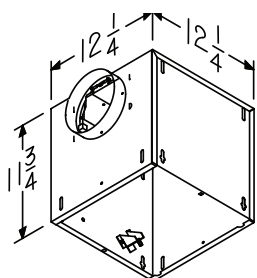
OPTIONS & ACCESSORIES

- Speed control
- Wall cap, roof jack, roof cap (self-flash or curb mounted)
- Rectangular to round inlet and/or discharge adapter (L400-1500)
- RIS hanging isolators

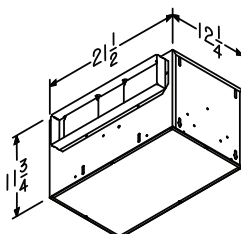


DIMENSIONS

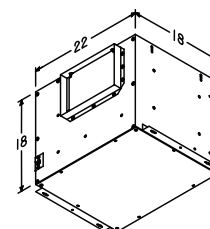
**L100L/L150L/L200L/L250L/L300L
IN-LINE VENTILATORS**



**L400L/L500L/L700L
IN-LINE VENTILATORS**



**L900L/L1500L
IN-LINE VENTILATORS**

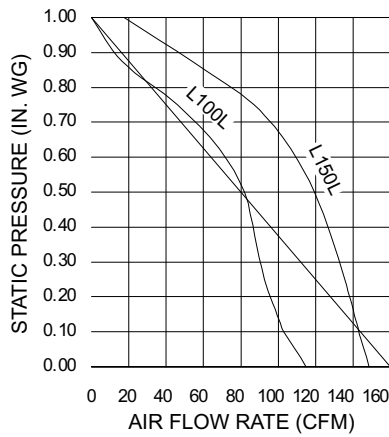


L-L SERIES

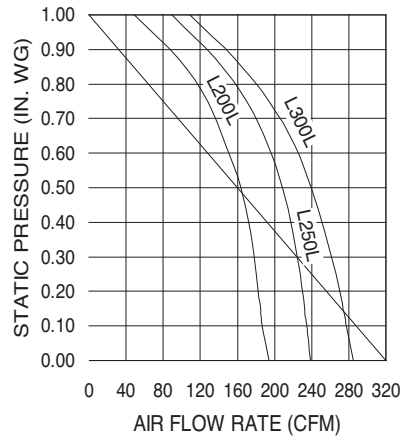
Inline Ceiling Exhausters

FAN CURVES

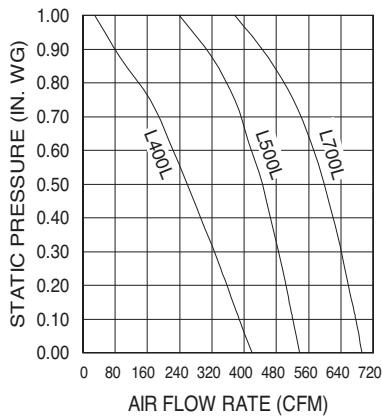
L100L/L150L



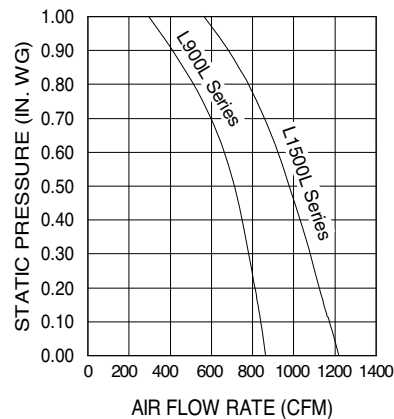
L200L/L250L/L300L



L400L/L500L/L700L



L900L/L1500L



Canarm Model	Watts Amps	Nom RPM	CFM @ INWG										Unit Weight	Intake & Discharge Size
			FA	0.100	0.125	0.250	0.375	0.500	0.625	0.750	0.875	1.000		
L100L	87	760	121	108	106	97	93	86	70	44	17	--	22.9 lbs	6" Rd
	1.1	Sones	0.5	0.7	0.7	1.1	1.4	1.8	2.1	2.4	2.6	--		
L150L	100	920	153	148	147	140	134	125	111	91	54	18	22.9 lbs	6" Rd
	1.3	Sones	0.9	1.0	1.1	1.4	1.6	1.9	2.1	2.2	2.4	2.6		
L200L	127	865	205	196	195	190	185	175	158	135	96	47	23.1 lbs	8" Rd
	1.8	Sones	1.7	1.9	1.9	2.1	2.3	2.4	3.0	3.3	3.4	3.4		
L250L	166	1005	248	245	245	241	235	224	208	183	141	84	23.2 lbs	
	2.1	Sones	2.0	2.3	2.3	2.6	2.8	3.2	3.4	3.6	3.9	3.8		
L300L	212	1145	300	294	293	285	274	259	243	214	168	113	23.2 lbs	
	2.6	Sones	2.9	3.0	3.1	3.3	3.4	3.5	3.6	3.7	4.0	3.9		
L400L	146	775	450	415	406	360	313	271	223	167	90	--	33.9 lbs	18-1/2" x 4-1/2"
L500L	1.4	Sones	1.4	1.6	1.6	1.9	2.2	2.6	2.9	3.4	3.6	--	33.9 lbs	
	232	890	546	526	519	496	472	447	407	364	306	232		
L700L	2.2	Sones	2.4	2.4	3.4	3.7	3.9	3.8	3.9	4.0	4.3	4.3	34 lbs	
	313	1090	704	686	681	656	631	604	575	533	480	412		
L900L	2.9	Sones	3.6	3.8	3.7	3.9	4.0	4.2	4.3	4.4	4.7	5.0	64.4 lbs	12" x 8"
	306	810	930	902	894	853	807	754	685	587	442	300		
L1500L	3.0	Sones	3.7	3.8	3.8	3.8	3.7	3.8	3.9	4.0	4.0	4.1	64.5 lbs	
	468	1055	1,275	1,225	1,214	1,152	1,092	1,029	958	871	764	631		
	5.9	Sones	6.8	6.8	6.7	6.5	6.3	6.0	6.0	6.0	6.0	6.1		

L & L-L SERIES ACCESSORIES

CEILING RADIATION DAMPERS

Models RD1/RD2/RD3



When excessive heat is detected, the breakaway fusible link triggers the closing of the radiation damper's fire resistant screen to prevent smoke and fire from travelling through the ductwork.

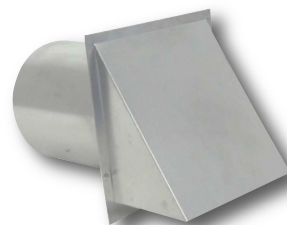
INLINE ADAPTOR KITS FOR CEILING EXHAUST FANS

Models IA961L/IA981L/IA982L/IA983L



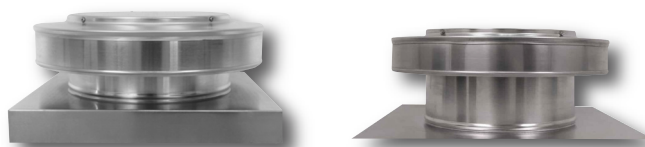
WALL CAPS

Models WC4A/WC6A/WC8A/WC10A/WC12A



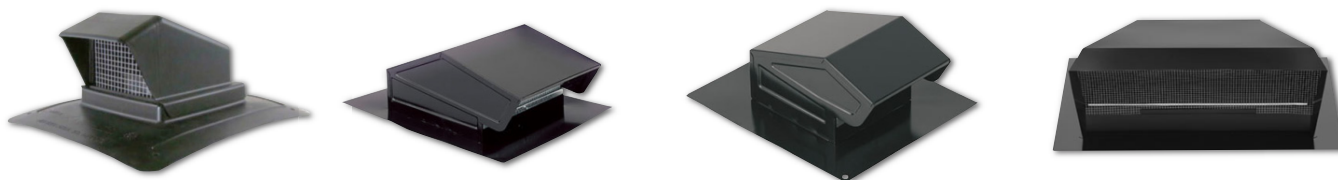
ROOF CAPS

Models RCSF6/RCSF8/RCSF10/RCSF12/RCCM6/RCCM8/RCCM10/RCCM12



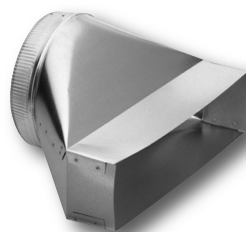
ROOF JACKS

Models RJ636/RJ634/RJ437/RJ4P/RJ6P



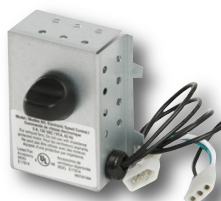
TRANSITIONS

Models TRN423/TRN81212



CONTROLS

MC80L



MC3/MC5

