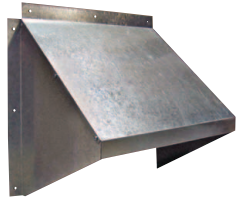


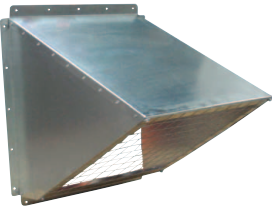
HOODS

GH GALVANIZED HOODS



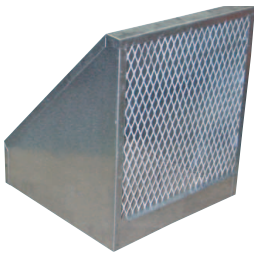
- Economical shipping.
- Easy to assemble, galvanized hood.
- No screens.

GH KNOCK DOWN HOODS



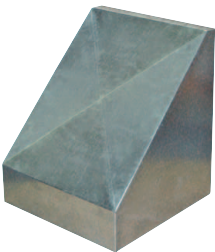
- Easy to assemble, galvanized hood.
- Includes bird screen.

WHA HOODS



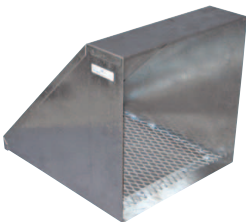
- For AX fans.
- Shipped fully assembled.
- 18 gauge galvanized weather hoods complete with bird screen.

WHP HOODS



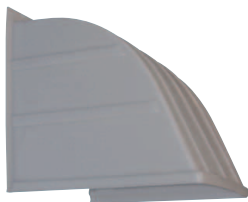
- Optional insect screen available. Consult factory.
- For Panel fans.

INTAKE & EXHAUST HOODS



- Shipped fully assembled.
- 18 gauge galvanized weather hoods complete with bird screen.

PLASTIC HOODS



- Rugged, grey plastic hood.
- No screens.

HOOD MODEL	DIMENSIONS		APPROX. WEIGHT (LBS)	FANS THAT WILL FIT
	INSIDE DIMENSIONS	OUTSIDE DIMENSIONS		
GH GALVANIZED HOODS				
GH-XF12-M	14.75"W X 14.0"H	18"W X 15.75"H	4	XF12 / XB12 / SD8 / SD10 / AX8 / AX10 / AX12
GH-XF16-M	18.75"W 17.75"H	22"W X 19.75"H	7	XF16 / XB12 / HV12 / HVA12 / ADD12 / DDP12 / DDS12 / SD12-14 / AX14-16
GH-XF20-M	22.75"W X 22"H	26"W X 23.75"H	9	XF20 / XB14 / XB16 / HV14-16 / HVA14-16 / ADD14-16 / DDP14-16 / DDS14-16 / SD16-18 / AX18-20
GH-XF24-M	26.75"W 26"H	29"W X 27.25"H	12	XFS24

HOOD MODEL	DIMENSIONS		APPROX. WEIGHT (LBS)	FANS THAT WILL FIT
	INSIDE DIMENSIONS	OUTSIDE DIMENSIONS		
GH KNOCKDOWN HOODS				
GH-KD24	31.65"W X 31.85"H	34.65"W X 34.83"H	31	XB24 / HV24 / HVA24 / ADD24 / DDP24 / DDS24 / SD24 / AX24
GH-KD36	43.62"W X 43.93"H	46.62"W X 46.82"H	75	XB30-36 / HV30-36 / HVA30-36 / ADD30-36 / DDS30-36 / SD30-36 / AX30-36 / AX42
GH-KD48	55.62"W X 55.25"H	58.62"W X 58.82"H	TBA	XB42-48 / HV42-48 / HVA42-48 / ADD42-48 / DDS42-48 / SD42 / AX42
GH-KD60	69.76"W X 69.92"H	72.76"W X 72.95"H	TBA	XB54-60 / HV54-60 / HVA54-60 / ADD54-60

HOOD MODEL	DIMENSIONS		APPROX. WEIGHT (LBS)	FANS THAT WILL FIT
	INSIDE DIMENSIONS			
WHA HOODS				
WHA8-10	12.11"W X 12.11"H		13	AX08-10, SD8
WHA12	14.05"W X 14.05"H		16	AX12, SD10
WHA14	16.11"W X 16.11"H		22	AX14, SD12
WHA16	18.11"W X 18.11"H		26	AX16, SD14
WHA18	20.11"W X 20.11"H		29	AX18, SD16
WHA20	22.05"W X 22.05"H		31	AX20, SD18
WHA24	26.05"W X 26.05"H		47	AX24
WHA30	33.05"W X 33.05"H		59	AX30
WHA36	39.11"W X 39.11"H		76	AX36

HOOD MODEL	DIMENSIONS		APPROX. WEIGHT (LBS)	FANS THAT WILL FIT
	INSIDE DIMENSIONS			
WHP HOODS				
WH8-10P	14.45"W x 14.45"H		20	P08 / P10
WH12P	17.40"W X 17.40"H		16	P12
WH14P	19.20"W X 19.20"H		24	P14
WH16P	21.20"W X 21.20"H		26	P16
WH18P	23.20"W X 23.20"H		29	P18
WH20P	25.20"W X 25.20"H		44	P20
WH24P	29.15"W X 29.15"H		44	P24
WH30P	35.65"W X 35.65"H		60	P30
WH36P	41.65"W X 41.65"H		77	P36

HOOD MODEL	DIMENSIONS		APPROX. WEIGHT (LBS)	FANS THAT WILL FIT
	INSIDE DIMENSIONS			
EXHAUST / INTAKE / WEATHER HOODS				
EH12	16.55"W X 16.55"H		9	XF12 / SD8-12 / AX8-14 / XB12 / HV12 / HVA12 / ADD12 / DDP12 / DDS12
EH14	18.60"W X 18.60"H		15	XB14 / HV14 / HVA14 / ADD14 / DDP14 / DDS14 / SD14 / XF16 / AX16
EH16	20.60"W X 20.60"H		20	AX18 / SD16 / XB16 / HV16 / HVA16 / ADD16 / DDP16 / DDS16
EH18	22.55"W X 22.55"H		31	SD18 / XB18 / HV18 / HVA18 / ADD18 / DDP18 / DDS18 / XF20 / AX20
EH20	24.55"W X 24.55"H		44	SD20 / XB20 / XF24 / HV20 / HVA20 / ADD20 / DDP20 / DDS20
EH24	30.05"W X 30.05"H		60	SD24 / AX24 / XB24 / ADD24 / HV24 / HVA24 / DDP24 / DDS24
EH30	36.35"W X 36.35"H		72	SD30 / AX30 / XB30 / HV30 / HVA30 / ADD30 / DDS30 / JFHVA24
EH36	42.30"W X 42.30"H		104	SD36 / AX36 / XB36 / HV36 / HVA36 / ADD36 / DDS36 / JFHVA30
EH42	48.63"W X 48.63"H		163	XB42 / HV42 / HVA42 / ADD42 / DDS42 / JFHVA36 / SD42 / AX42
EH48	54.64"W X 54.64"H		TBA	XB48 / HV48 / HVA48 / ADD48 / DDS48 / JFHVA42
EH54	61.20"W X 61.20"H		TBA	XB54 / HV54 / HVA54 / ADD54 / JFHVA48
EH60	69.39"W X 69.39"H		TBA	XB60 / HV60 / HVA60 / ADD60

HOOD MODEL	DIMENSIONS		APPROX. WEIGHT (LBS)	FANS THAT WILL FIT
	INSIDE DIMENSIONS			
PLASTIC HOODS				
HFP-18G	21.50"W X 21.75"H		9	S8 / S10 / S12 / S14 / S16 / S18V / AX08 / AX10 / AX12 / AX14 / AX16 / AX18
HFP-24G	27.50"W X 27.75"H		13	S20 / S24 AX20 / AX24