



IMPORTANT: READ AND SAVE THESE INSTRUCTIONS

ASSEMBLY AND MAINTENANCE INSTRUCTIONS

FOR HEAVY DUTY INDUSTRIAL

18", 20", 24" & 30" SINGLE PHASE, THREE-PHASE AND EXPL

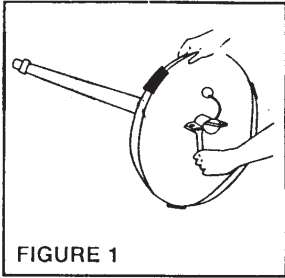


FIGURE 1

Figure 1

Remove parts bag, half strap [1], bolts [4], lock-washer [4], position half strap "notched ends" toward base on under side. Then insert thru bolts and attached lockwasher and nuts, do not tighten. Pedestal assembly should then be positioned into base. Secure from the underside of base by tightening four bolts as illustrated.

Figure 2

Attach motor to pedestal with 2 bolts provided.

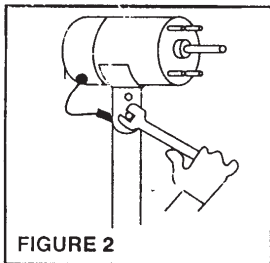


FIGURE 2

Figure 2A

(Explosion Proof Motors)

Attach mounting bracket to the pedestal with 2 bolts provided; attach motor to bracket with 4 bolts provided.

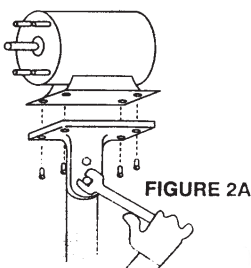


FIGURE 2A

WARNING: TO REDUCE THE RISK OF FIRE OR ELECTRIC SHOCK DO NOT USE ANY SOLID-STATE SPEED CONTROL DEVICE WITH THESE FANS.

CAUTION: DISCONNECT FAN FROM POWER SUPPLY BEFORE SERVICING TO REDUCE RISK OF FIRE OR ELECTRIC SHOCK.

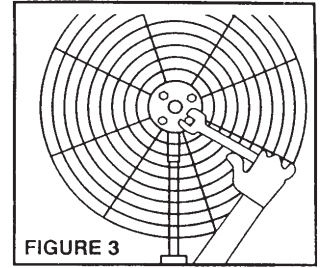


FIGURE 3

FLOOR MODELS

All Floor Model Circulators are shipped in 5 cartons:

- 1 carton contains motor with mounting bracket and cord attached.*
- 1 carton contains the propeller.
- 1 carton contains the safety guard.
- 1 carton contains adjustable pedestal.

Figure 3

Attach rear half of guard to motor, using supplied washers and nuts.

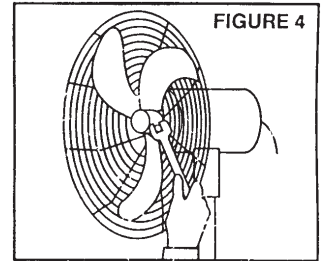


FIGURE 4

Figure 4

Attach propeller to motor. For steel propellers and aluminum props with 5/8" bore, align the two motor flats and tighten the two set screws. Allow 3/4" clearance between propeller hub and motor

CAUTION CAUTION CAUTION

Handle the propeller very carefully because it is perfectly balanced and aligned to insure smooth operation. Do not use a hammer to force the propeller onto the shaft. It should fit snugly, but not so tight that it will not slide on by the pressure of your hand.

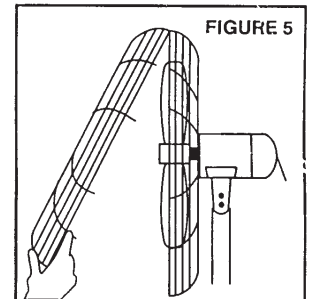


FIGURE 5

Figure 5

Attach front half of guard. Spring wire tabs hold in place using a screwdriver or other tool. NOTE: For best fit position the hooks on the front guard midway between the radial wires of the rear guard.

Figure 6

Raise pedestal to desired height and lock with set screw using wrench.

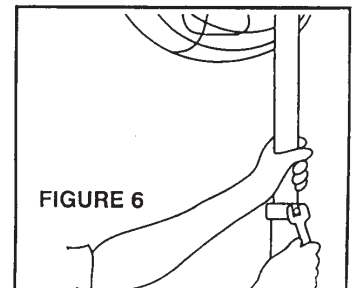


FIGURE 6

FOR WALL & CEILING MODELS - SEE OTHER SIDE

IMPORTANT: READ AND SAVE THESE INSTRUCTIONS

WARNING: To reduce the risk of fire, electric shock and injury to persons, the fan must be installed with the Blade, Guard, Wall Bracket, Ceiling Bracket, I-Beam Bracket, Pedestal and Base that are marked on their cartons to indicate suitability with this model. Other Blades, Guards, Wall Brackets, Ceiling Brackets, I-Beam Brackets, Pedestals and Bases cannot be substituted.

I-BEAM & WALL MODELS

All of the models are shipped in 4 cartons.

- 1 carton contains the Wall Bracket or the I-Beam Bracket and two sets of Beam Clamps (including instructions) Safety Cable Kit (including instructions)
- 1 carton contains Motor with Mounting Bracket and power cord.
- 1 carton contains the Propeller.
- 1 carton contains the safety guard.

In assembly, follow same instructions as 3, 4 and 5 illustrated and described on opposite page.

CEILING MODELS

All of the models are shipped in 4 cartons:

- 1 carton contains the Ceiling Kit (including instructions), Safety Cable Kit (including instructions)
- 1 carton contains Motor with Mounting Bracket and power cord.*
- 1 carton contains the Propeller.
- 1 carton contains the Safety Guard.

In assembly, follow the same instructions as 3, 4 and 5 illustrated and described on opposite page.

*NOTE: 3-conductor cord is furnished only with 642 & 967, 1/4 HP, single phase motors.

This motor is made with the highest quality materials and workmanship. With reasonable care it will provide long and satisfactory service.

Be sure the voltage and cycles shown on the motor nameplate correspond to the power supply.

WARNING - To reduce the risk of fire or electric shock, observe the following: Before servicing or cleaning the unit, switch the power off at the service panel and lock service panel to prevent the power from being switched on accidentally.

OSCILLATION ADJUSTMENT -

The electric drive on oscillating motors has a 4 position detent, adjustable by turning the eccentric plate on the bottom. One position produces non-oscillation, another position produces a 45° oscillation arc, while the other two produce a 90° oscillation arc. CAUTION - OSCILLATING MOTOR NOT TO BE USED IN THE UPSIDE DOWN POSITION.

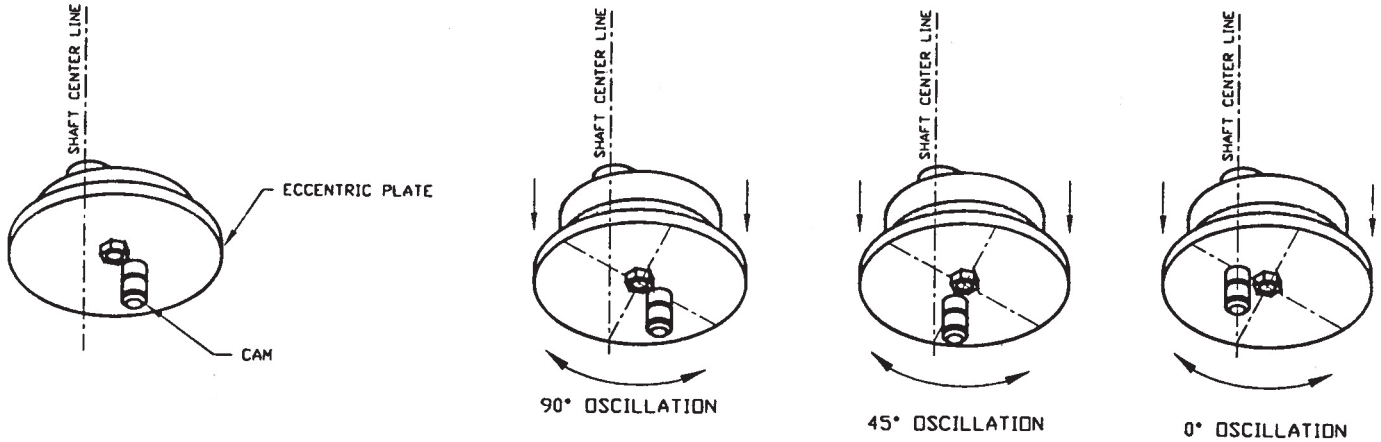
LUBRICATION -

This motor is equipped with pre-lubricated ball bearings. The original supply of lubricant is kept free of dirt, grit or outside contamination by the bearing closures and does not require replenishment for the life of the bearing under normal operating conditions.

MAINTENANCE -

Keep blades clean. An accumulation of dirt may cause blade vibration and motor overload. Check tightness of blade set screws occasionally.

OSCILLATION ADJUSTMENT INSTRUCTIONS



Oscillating mechanism can be changed by grasping the eccentric plate and pulling down and twisting into another oscillation mode. The eccentric plate will snap in to one of three oscillation patterns pending on where the eccentric plate is released from grasp. The connecting arm is not shown in this illustration and does not need to be removed to change oscillation.

This mechanism is also a slip clutch in the event that oscillation is impeded, the mechanism will release and move to a shorter pattern of oscillation. Neutral is the final slip mode if obstruction is still in interference with the oscillation pattern.

IMPORTANT SAFETY NOTE:

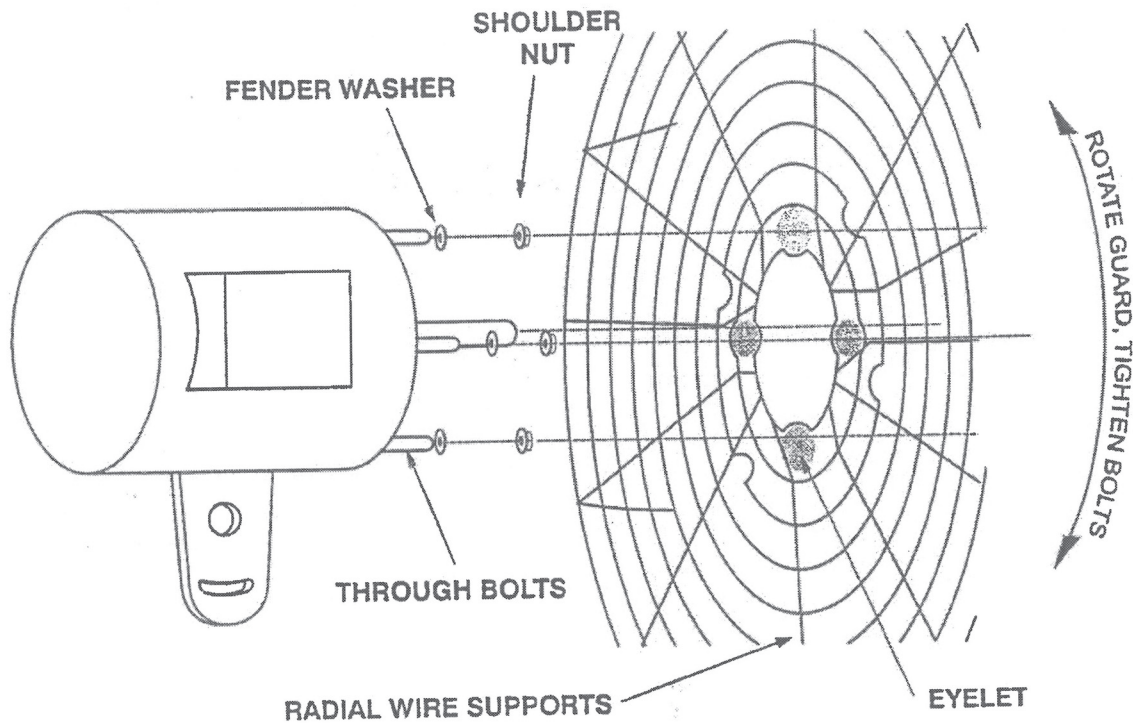
For a good safety practice, a safety cable kit is included, and required for fans in an overhead mounting application. If material handling equipment strikes the fan or the mounting hardware fails the cable will prevent the fan from falling. The safety device consists of 12' of 1/16" diameter cable, with a "U" clamp on one end and a "crimp" on the other end.

THESE INSTRUCTIONS APPLY TO THE FOLLOWING FANS:

FLOOR MODELS	WALL MODELS	CEILING MODELS	I-BEAM MODELS
18BN-S	18WN-S8	Non-Oscillators Only	18IN-S
20BN-S	20WN-S8	18LS16-S	20IN-S
24BN-S	24WN-S8	20LS16-S	24IN-S
30BN-S	30WN-S8	24LS16-S	30IN-S
18LF16-S	18LF16-S	30LS16-S	18LI16-S
20LF16-S	20LW16-S	UP24LS16-H	20LI16-S
24LF16-S	24LW16-S	UP24LS16-HH	24LI16-S
30LF16-S	30LW16-S	UP30LS16-H	30LI16-S
CA30HGDCSPB	CA30HGDCWM	UP30LS16-HH	CA30HGDCSIB
CA30HGPCPB	CA30HGPCWM		CA30HGPCIB
UP24LF16-H	UP24LW16-H		UP24LI16-H
UP24LF16-HH	UP24LW16-HH		UP24LI16-HH
UP30LF16-H	UP30LW16-H		UP30LI16-H
UP30LF16-HH	UP30LW16-HH		UP30LI16-HH

READ AND SAVE THESE INSTRUCTIONS

MOUNTING INSTRUCTIONS FOR HEAVY DUTY & IAC REAR GUARDS



1. Place one fender washer on each through bolt.
2. Place a shoulder nut on each through bolt and tighten 1 1/2 turns.
3. Place the guard on the motor, slipping the eyelets in the guard over the shoulder nuts.
4. Rotate the guard away from eyelet until the radial wire supports rest against the through bolts.
(Fender washer must be away from the eyelets)
5. Tighten shoulder nuts.

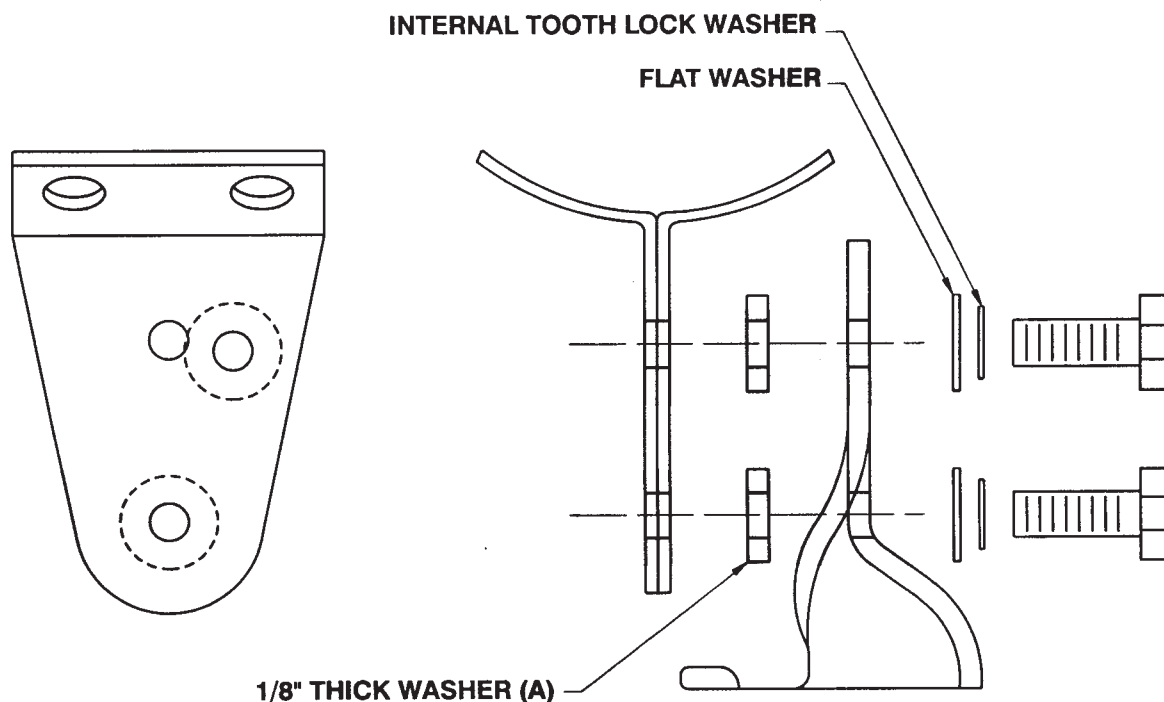


HEAVY DUTY INDUSTRIAL AIR CIRCULATOR

THE MOTOR BRACKET HAS TWO TILT ADJUSTMENT HOLES TO ALLOW FOR MAXIMUM TILT.

WHEN USING THE OUTER HOLE TO GIVE MAXIMUM TILT THE TWO 1/8" THICK WASHERS (A) SHOULD BE PLACED BETWEEN THE MOTOR BRACKET AND THE MATING BRACKET ON THE PEDESTAL, CEILING, I-BEAM OR WALL MOUNT.

THIS IS NECESSARY FOR PROPER CLEARANCE OF THE TWO MATING PARTS



1300 Falahee Rd. | Jackson, MI 49203
Phone: 517.764.2300 Fax: 517.764.3838 / 800.255.3084
www.airmasterfan.com