

WIRING SCHEMATIC

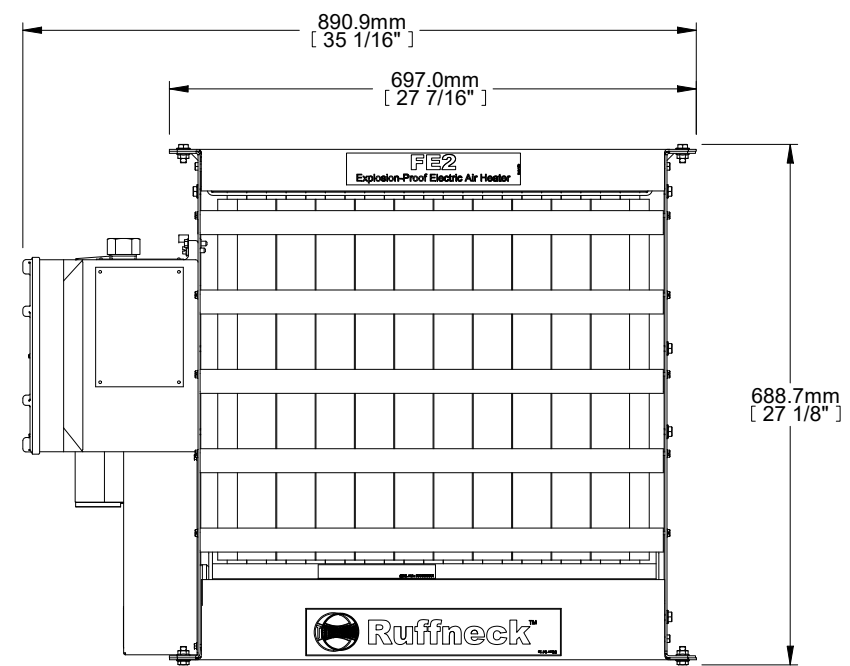
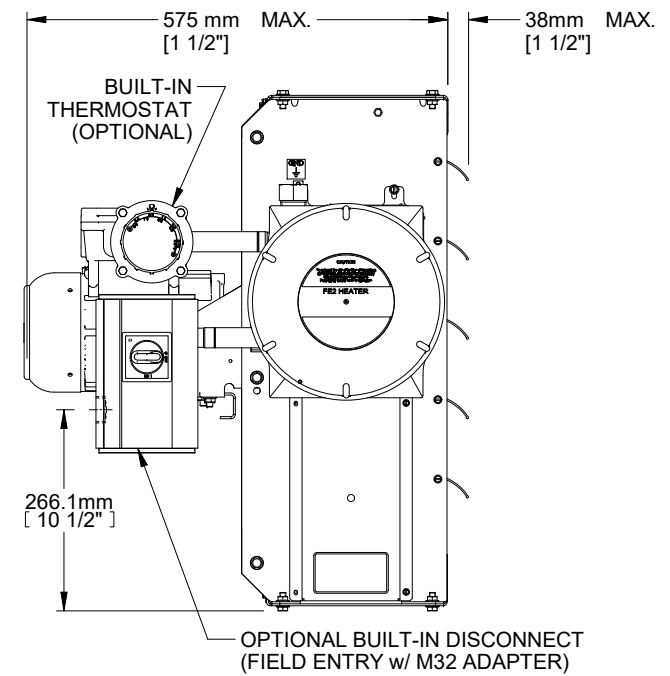
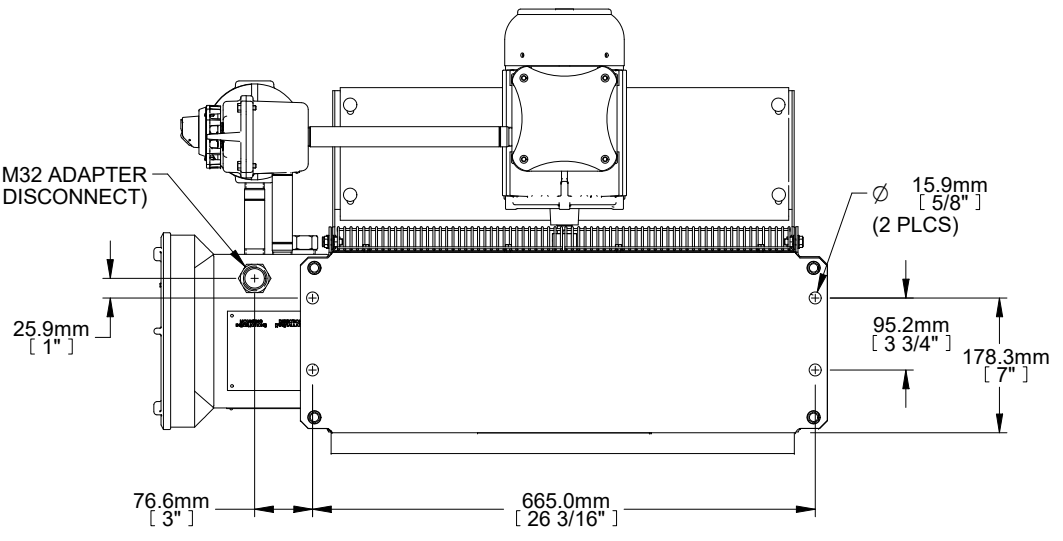
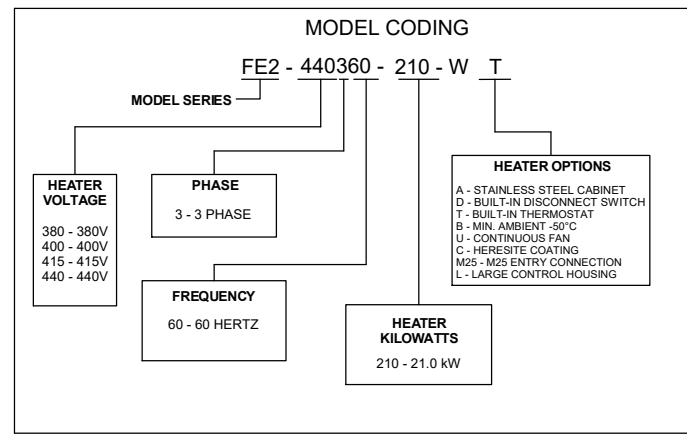


TABLE 1 - TECHNICAL DATA (60HZ)

MODEL	OUTPUT (kW)	VOLTAGE (VOLTS)	FREQ. (Hz)	PHASE	CURRENT (AMPS)	AIR FLOW (M ³ /HR) @21°C
FE2-440360-210	21.0	440	60	3	27.5	5613
FE2-440360-252	25.2				33.1	
FE2-440360-294	29.4				38.6	
FE2-480360-250	25.0	480	60	3	30.1	5868
FE2480360-300	30.0				36.1	
FE2-480360-350	35.0				42.1	

NOTES:

- NET WEIGHT: 107 KG
- SHIPPING WEIGHT: 130 KG
- OPERATING AMBIENT TEMP: -20° TO +40°C
-50° TO +40°C FOR SUFFIX "-B" UNITS
- HAZARDOUS LOCATION CLASSIFICATION: Ex II 2 G Ex d IIB T3 Gb
- TEMPERATURE CLASS: T3 200°C
- MATERIALS: CABINET: 12 GA. STEEL EPOXY POWDER COATED RUFFNECK GREEN (Standard build) or 12 GA. 304 STAINLESS STEEL (Model code "A")
CORE: STEEL WITH INTEGRAL ALUMINUM FINS
- CERTIFIED TO:
EN 60079-0:2012+A11:2013
EN 60079-1:2007

REV.	REVISION DESCRIPTION	DATE	BY
2	UPDATE TO OPTIONAL FEATURES	16 APR 2018	NJS
1	UPDATED PANELS AND MATERIAL	18 JUN 2015	GM

TITLE: FE2 RUFFNECK HEATER DATA SHEET
21 - 35 kW @ 60 Hz

TOLERANCE UNLESS NOTED OTHERWISE			
± 1/2° ANGULAR	± N/A DECIMAL	± 1/8" FRACTIONAL	± 3 mm METRIC
DWG NO.: 51924-D SHEET: 2 of 2		DRN BY: nsanchez 15 Jan 2016	
PART NO.: N/A		CHK'D BY:	
SCALE: NONE		APP'D. BY:	