

B-AIR.COM

DESIGNED & ENGINEERED
IN CALIFORNIA

THE STANDARD IN WATER DAMAGE RESTORATION EQUIPMENT



CUSTOM COLORS AVAILABLE



PRIVATE LABEL AVAILABLE

AIR MOVERS

VP-25

1/4 HP

VENT VP-25

Motor 1/4 HP
Amps L 1.7A / M 1.8A / H 2.1A
Max Air Volume 900CFM
Speeds 3
Certification: C-ETL-US
Stackable: 5 units
Daisy Chain: Yes
Voltage 115V
Cycle 60Hz
Max Static Pressure 1.3"
Weight Net/Gr 11.3/12.6 Lbs
Size (LxWxH) 12.8" x 12.4" x 13.3"
Wheel Speed (RPM) L 1060 / M 1370 / H 1600
Attached Cord 10 Ft 14 AWG
Available Colors ● ● ●
Custom colors available Private label available



AIR MOVER
VENT VP-25

VP-33

1/3 HP

VENT VP-33

Motor 1/3 HP
Amps L 2.6A / H 2.9A
Max Air Volume 2530CFM
Speeds 2
Certification: C-ETL-US
Stackable: 5 units
Daisy Chain: Yes
Voltage 115V
Cycle 60Hz
Max Static Pressure 1.7"
Weight Net/Gr 26/29 Lbs
Size (LxWxH) 16" x 14.5" x 15.5"
Wheel Speed (RPM) L 1450 / H 1620
Attached Cord 25 Ft 14 AWG
Available Colors ● ● ● ●
Custom colors available Private label available



AIR MOVER
VENT VP-33

VP-50

1/2 HP

VENT VP-50

Motor 1/2 HP
Amps L 2.8A / H 4.5A
Max Air Volume 2820 CFM
Speeds 2
Certification: C-ETL-US
Stackable: 5 units
Daisy Chain: No
Voltage 115V
Cycle 60 Hz
Max Static Pressure 2.5"
Weight Net/Gr 25/28 Lbs
Size (LxWxH) 16" x 14.5" x 15.5"
Wheel Speed (RPM) L 1520 / H 1700
Attached Cord 25 Ft 18 AWG
Available Colors ●
Custom colors available Private label available



AIR MOVER
VENT VP-50

GP-1

1 HP

GRIZZLY GP-1

Motor 1 HP
Amps L 8.7A / M 9.2A / H 10.6A
Max Air Volume 3550CFM
Speeds 3
Certification: C-ETL-US
Stackable: No
Daisy Chain: No
Voltage 115V
Cycle 60Hz
Max Static Pressure 3.1"
Weight Net/Gr 39/43 Lbs
Size (LxWxH) 19" x 18" x 19.5"
Wheel Speed (RPM) L 1300 / M 1440 / H 1720
Attached Cord 25 Ft 14 AWG
Kick Stand Height 4.5"
Available Colors ● ● ●
Custom colors available Private label available



AIR MOVER
GRIZZLY GP-1

SPECIALITY AIR MOVERS

FX-1

1/4 HP

FLEX FX-1

Motor 1/4 HP
Amps 2.6A
Max Air Volume 375 CFM
Speeds 1
Certification: C-ETL-US
Stackable: No
Daisy Chain: Yes
Voltage 115V
Cycle 60 Hz
Max Static Pressure 2.8"
Weight Net/Gr 11/12 Lbs
Size (LxWxH) 10.5" x 10" x 8.5"
Wheel Speed (RPM) 3400
Attached Cord 12 FT 14 AWG
Available Colors ● ● ●
Custom colors available Private label available



AIR MOVER
FLEX FX-1

PB-25

1/4 HP

POLAR BEAR PB-25

Motor 1/4 HP
Amps L 1.3A / H 2.6A
Max Air Volume 3320 CFM
Speeds 2
Certification: C-ETL-US
Stackable: 5 units
Daisy Chain: Yes
Voltage 115V
Cycle 60 Hz
Max Static Pressure N/A
Weight Net/Gr 30/34 Lbs
Size (LxWxH) 13" x 20" x 22.5"
Wheel Speed (RPM) L 1650 / H 1750
Attached Cord 25 FT 14 AWG
Available Colors ● ● ●
Custom colors available Private label available



AIR MOVER
POLAR BEAR PB-25

SCRUBBER

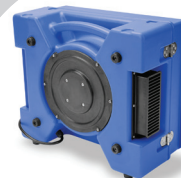
RAPTOR HEPA SCRUBBER

NEW

250-500 CFM

RAPTOR HEPA SCRUBBER

Certification C-ETL-US
Fan Speed 500-2400 RPM
Motor Rating .33 HP
Power 115V 60 HZ
Current 2.5 amps
CFM 250-500
Pre Filter G4
Prime Filter H13 (Made in Germany)
Available Colors ● ● ●
Custom colors available Private label available



DEHUMIDIFIERS

LGR 2200

NEW

130/225 PPD

LGR 2200

Certification C-ETL-US
Water Removal (AHAM) 130PPD (80°F 60%RH)
Water Removal (Saturation) 225PPD (90°F- 90%RH)
Power 8.5 Amps 115V/60Hz
Refrigerant R410a
Air Volume 400 CFM
Housing Construction Rotomolded Polyethylene
Working Temperature 32°F- 115°F
Compressor Type Rotary
Controls Electronic Touchpad
Unit Dimensions 21" x 20" x 32.5"
Net Weight 100 Lbs
Available Colors ● ● ●
Custom colors available Private label available



VANTAGE LGR 3000

170/300 PPD

VANTAGE LGR 3000 | VG LGR 3000

Certification C-ETL-US
Water Removal (AHAM) 170PPD (80°F 60%RH)
Water Removal (Saturation) 300PPD (90°F 90%RH)
Power 12 Amps 115V/60HZ
Refrigerant R410a
Air Volume 450 CFM
Housing Construction Coated Aluminum Core
Working Temperature 33°F to 125°F
Compressor Type Rotary
Unit Dimensions 40" x 20.5" x 24.25"
Net Weight 160 Lbs
Available Colors ●
Custom colors available Private label available



VANTAGE 1500

76/150 PPD

VANTAGE 1500 | VG 1500

Certification C-ETL-US
Water Removal (AHAM) 76PPD (80°F 60%RH)
Water Removal (Saturation) 150PPD (90°F 90%RH)
Power 7.36 Amps /115V/60HZ
Refrigerant R410a
Air Volume 325 CFM
Housing Construction Rotomolded Polyethylene
Working Temperature 33°F- 100°F
Compressor Type Rotary
Controls Electronic Touchpad
Unit Dimensions 22.5" x 20" x 32"
Net Weight 84 Lbs
Available Colors ● ● ● ●
Custom colors available Private label available



Direct: 626.385.3300
info@b-air.com

550 S. Ayon Avenue
Azusa, California 91702

877.800.2247

B-AIR.COM

DESIGNED & ENGINEERED
IN CALIFORNIA