



ADD - DIRECT DRIVE WALL FANS

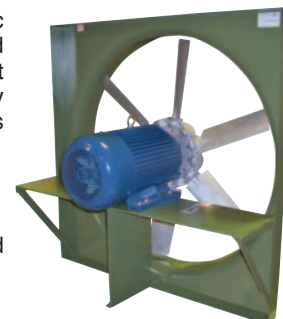
Designed for heavy duty commercial and industrial applications
- Factories, Warehouses, Gymnasiums, Underground parking garages, etc.



These fans are typically used for high volume, high static pressure applications. The series ADD is designed and constructed for efficient & economical operations and is direct drive, therefore requiring little or no maintenance. Heavy duty airfoil cast aluminum blades are standard to ADD series fans providing maximum performance at low sound levels.

This fan is used for exhaust applications. Please consult factory for supply applications.

OPTIONAL - Reversing blades available on 30", 36", 42' and 48" models. Consult factory for details.



BACK VIEW

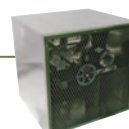
SPECIFICATIONS

BLADE DIAMETER	MODEL #			WEIGHT (LBS.)	RPM	H.P.	dBA @ 5 ft.	CFM @ STATIC PRESSURE							
	SINGLE PHASE	THREE PHASE	THREE PHASE REVERSING BLADE					0"	1/8"	1/4"	1/2"	3/4"	1"	1 1/4"	
12"	ADD12T10033C	ADD12T30033C*	-	40	1140	1/3	45	990	760	102	-	-	-	-	
	ADD12T10033B	ADD12T30033B*	-	34	1750	1/3	55	1450	1340	1230	313	-	-	-	
	ADD14T10033C	ADD14T30033C*	-	42	1140	1/3	49	1450	1190	443	-	-	-	-	
	ADD14T10033B	ADD14T30033B*	-	34	1750	1/3	58	2220	2070	1920	1350	512	185	-	
	ADD16T10033C	ADD16T30033C*	-	46	1140	1/3	53	2150	1960	1640	340	-	-	-	
	ADD16T10050B	ADD16T30050B*	-	38	1750	1/2	63	3300	3180	3040	2690	1750	825	370	
14"	ADD18T10033C	ADD18T30033C*	-	47	1140	1/3	57	2990	2740	2450	845	-	-	-	
	ADD18T10075B	ADD18T30075B*	-	40	1750	3/4	67	4590	4440	4280	3910	3260	1750	-	
	ADD20T10033C	ADD20T30033C*	-	50	1140	1/3	62	4530	3920	3180	739	-	-	-	
	ADD20T10100B	ADD20T30100B*	-	61	1750	1	72	6950	6570	6155	5300	3225	1860	853	
	ADD24T10050C	ADD24T30050C*	-	91	1140	1/2	59	4990	4610	4180	2920	1210	-	-	
	ADD24T10100C	ADD24T30100C*	-	125	1140	1	65	6520	6090	5630	4380	1920	813	-	
16"	-	ADD24T30150C*	-	117	1140	1.5	67	8710	8190	7630	6020	2380	720	-	
	ADD24T10150B	ADD24T30150B*	-	71	1750	1.5	68	7660	7430	7160	6620	5980	5170	4020	
	ADD24T10200B	ADD24T30200B*	-	113	1750	2	73	9210	8950	8660	8090	7470	6660	5540	
	ADD24T10300B	ADD24T30300B*	-	125	1750	3	75	11500	11220	10900	10200	9490	8680	7540	
	ADD30T10100C	ADD30T30100C*	ADDR30T30100C*	138	1140	1	65	8680	8110	7480	6000	3630	1550	-	
	-	ADD30T30150C*	ADDR30T30150C*	131	1140	1.5	69	11800	11230	10600	8950	6070	3070	-	
18"	-	ADD30T30200C*	ADDR30T30200C*	149	1140	2	70	12780	12170	11490	9850	7320	3620	-	
	ADD30T10300B	ADD30T30300B*	ADDR30T30300B*	139	1750	3	74	13300	12950	12550	11700	11000	9980	8830	
	-	ADD30T30500B*	ADDR30T30500B*	149	1750	5	78	18200	17790	17350	16550	15200	14600	13880	
	-	ADD36T30200C*	ADDR36T30200C*	180	1140	2	73	14000	13240	12400	10600	8390	5530	-	
	-	ADD36T30300C*	ADDR36T30300C*	212	1140	3	74	19400	18520	17550	15600	13100	8980	6450	
	-	ADD36T30500C*	ADDR36T30500C*	223	1140	5	76	23600	22870	22050	19700	16850	11700	9220	
20"	ADD36T10500B	ADD36T30500B*	ADDR36T30500B*	180	1750	5	75	16200	15730	15200	14200	12800	11200	11050	
	ADD36T10750B	ADD36T30750B*	ADDR36T30750B*	245	1750	7.5	82	21500	20980	20400	19400	18350	17100	15850	
	ADD36T11000B	ADD36T31000B*	ADDR36T31000B*	255	1750	10	83	29700	29160	28550	27300	26150	24900	23700	
	-	ADD42T30200D*	ADDR42T30200D*	233	860	2	70	19200	17830	16300	12400	6720	-	-	
	-	ADD42T30300D*	ADDR42T30300D*	233	860	3	72	23210	21800	20230	16280	8980	3940	-	
	-	ADD42T30500D*	ADDR42T30500D*	353	860	5	75	28900	27340	25600	20800	11100	6290	-	
24"	-	ADD42T30500C*	ADDR42T30500C*	236	1140	5	76	25500	24580	23550	21100	18300	14200	10100	
	-	ADD42T30750C*	ADDR42T30750C*	258	1140	7.5	78	30690	29770	28750	26190	23350	19410	12780	
	-	ADD42T31000B*	ADDR42T31000B*	254	1750	10	83	26700	25990	25200	23750	22380	21100	19570	
	-	ADD42T31500B*	ADDR42T31500B*	380	1750	15	85	39100	38620	38080	36700	34640	33500	32040	
	-	ADD48T30500D*	ADDR48T30500D*	382	860	5	75	29820	28450	26940	23790	16820	12790	6740	
	-	ADD48T30750D*	ADDR48T30750D*	507	860	7.5	77	35700	34160	32450	28600	22400	16800	8270	
30"	-	ADD48T31000C*	ADDR48T31000C*	425	1140	10	81	39500	38500	37400	35000	32700	29800	26050	
	-	ADD48T31500C*	ADDR48T31500C*	570	1140	15	83	47300	46230	45050	42300	38600	36200	33490	
	-	ADD48T32000C*	ADDR48T32000C*	596	1140	20	85	53900	52740	51450	48400	45200	42300	37120	

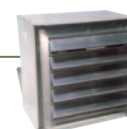
For three phase motors, substitute "M" with "M" for 230/460 volt (If 208V required please specify) or "P" for 575 volt Fan blades tested in accordance with AMCA standard 210, figure 12
dBA ratings shown are measured at 0" static pressure and should be used as a guideline only

OPTIONS

For a complete listing of all available options, see page D10.



For fan complete with cabinet/guard and shutter, substitute "T" with CBS



For fan complete with front sleeve and shutter, substitute "T" with SL5



For fan with rear sleeve and back guard, substitute "T" with SLB

FEATURES

- Heavy gauge steel fan panel with deep spun and flared venturi for maximum efficiency.
- Heavy gauge welded steel motor supports.
- Cast aluminum airfoil blades.
- TEFC motors are standard.



These fans can be combined with Explosion Proof Motors for use in hazardous locations. Please consult factory.



Reversing fan with cabinet will be a steel control damper.



Non-stock, made-to-order products are non-returnable and cannot be cancelled.

DIMENSIONS

MODEL	BLADE DIAMETER	A X A SQUARE	B	C (DIRECT DRIVE MOTOR FRAME)		
				56 - 184	213 - 215	254 - 286
ADD12	12"	16.125"	2.0"	13"	--	--
ADD14	14"	18.125"	2.5"	13"	--	--
ADD16	16"	20.125"	3.0"	13"	--	--
ADD18	18"	22.125"	3.0"	13"	--	--
ADD20	20"	24.125"	3.5"	13"	--	--
ADD24	24"	29.625"	4.0"	13"	14"	--
ADD30	30"	35.625"	4.5"	13"	14"	25"
ADD36	36"	41.625"	5.0"	13"	14"	25"
ADD42	42"	47.625"	5.0"	13"	14"	25"
ADD48	48"	53.625"	5.0"	--	14"	25"

